

GENERAL NOTES

ALL CONSTRUCTION SHALL BE IN ACCORDANCE WITH THE REQUIREMENTS SET FORTH BY 2015 IBC AND SHALL CONFORM TO ALL OTHER APPLICABLE MUNICIPAL, STATE, AND FEDERAL REGULATIONS INCLUDING THE ILLINOIS ACCESSIBILITY CODE (2018) AND THE AMERICANS WITH DISABILITIES ACT.

B: MISCELLANEOUS AND DEMOLITION NOTES

- ALL CONTRACTORS ARE REQUIRED TO VISIT THE SITE AND BE KNOWLEDGEABLE REGARDING EXISTING CONDITIONS AND THEIR EFFECT ON THE PROPOSED WORK. CONTRACTORS SHALL VERIFY AND BE RESPONSIBLE FOR, ANY CONDITIONS REQUIRING MODIFICATION BEFORE PROCEEDING WITH THE PROJECT.
- NOTIFY THE OWNER'S REPRESENTATIVE A MINIMUM OF 72 HOURS PRIOR TO THE INTERRUPTION OF ANY UTILITY.
- CONTRACTORS AND SUBCONTRACTORS SHALL COORDINATE THEIR WORK WITH THAT OF OTHER TRADES.
- NO WORK WILL BE PERMITTED TO BE INSTALLED WITHOUT RECEIPT AND SUBSEQUENT REVIEW OF FULL AND COMPLETE SUBMITTALS BY THE ARCHITECT/ENGINEER.
- DO NOT SCALE DRAWINGS, DIMENSIONS INDICATED TAKE PRECEDENCE OVER SCALE.
- VERIFY ALL DIMENSIONS AND ELEVATIONS IN THE FIELD. WHERE DISCREPANCIES ARE FOUND BETWEEN DIMENSIONS OR ELEVATIONS SHOWN AND ACTUAL FIELD CONDITIONS, NOTIFY ARCHITECT/ENGINEER.
- DEFINITIONS:
 - FURNISH:** SUPPLY, DELIVER TO AND UNLOAD AT PROJECT SITE READY FOR ASSEMBLY AND INCORPORATION INTO THE WORK.
 - INSTALL:** AT THE PROJECT SITE, UNPACK/UNGRATE ASSEMBLE, PLACE, ANCHOR, FINISH, PROTECT, CLEAN, AND PERFORM ALL OTHER SIMILAR OPERATIONS REQUIRED TO FULLY AND PROPERLY INCORPORATE AN ITEM INTO THE WORK. LEGALLY DISPOSE OF OR RECYCLE PACKAGING AND EXTRA MATERIAL OFF-SITE.
 - PROJECT SITE:** THE SPACE AVAILABLE TO THE CONTRACTOR FOR PERFORMANCE OF CONSTRUCTION ACTIVITIES. THE EXTENT OF THE PROJECT SITE IS THE AREAS TO BE REMODELED AS INDICATED ON THE DRAWINGS, AND EXTENDS TO SUCH AREAS AS CONTAIN TERMINATIONS FOR POWER, DATA AND OTHER SERVICES.
 - OFF-SITE:** OUTSIDE THE PROPERTY IN WHICH THE PROJECT SITE IS LOCATED.
 - PROVIDE:** FURNISH AND INSTALL, AS DEFINED ABOVE.
- WHERE CONFLICTS MAY EXIST BETWEEN THE REQUIREMENTS OF PORTIONS OF THE CONTRACT DOCUMENTS, THE GREATER QUANTITY, HIGHER QUALITY OR MORE STRINGENT REQUIREMENT SHALL GOVERN. THEREFORE, BY EXECUTING A CONTRACT FOR CONSTRUCTION, THE CONTRACTOR AGREES THAT, IF IT RAISED NO QUESTIONS REGARDING SUCH CONFLICTS DURING THE BIDDING PROCESS, AND IN THE ABSENCE OF A CLARIFYING ADDENDUM ISSUED DURING THE BIDDING PROCESS, IT HAS VOLUNTEERED TO COMPLY WITH THE MORE EXPENSIVE REQUIREMENT AS PART OF ITS BASE BID AND IS NOT ENTITLED TO ANY ADDITIONAL COMPENSATION TO RESOLVE THE CONFLICT.
- THE CONTRACT DOCUMENTS REQUIRE THE CONTRACTOR TO FURNISH AND INSTALL COMPLETE PRODUCTS, SYSTEMS AND SERVICES. BY EXECUTING A CONTRACT FOR CONSTRUCTION, THE CONTRACTOR AGREES THAT THE DRAWINGS SET FORTH THE DESIGN INTENT AND, THEREFORE, MAY NOT EXPRESSLY DEPICT EVERY LENGTH, SEGMENT, PIECE, PART, COMPONENT OR UNIT OF A PRODUCT, SYSTEM OR SERVICE. THE CONTRACTOR FURTHER AGREES THAT, AS PART OF ITS BID, IT MUST FURNISH AND INSTALL EVERY LENGTH, SEGMENT, PIECE, PART, COMPONENT OR UNIT OF A PRODUCT, SYSTEM OR SERVICE AND, CONSEQUENTLY, THE CONTRACTOR IS NOT ENTITLED TO ANY ADDITIONAL COMPENSATION FOR ANY LENGTH, SEGMENT, PIECE, PART COMPONENT OR UNIT OF A PRODUCT, SYSTEM OR SERVICE BECAUSE IT IS NOT EXPRESSLY DEPICTED HEREIN.
- ARCHITECT SHALL BE NAMED AS ADDITIONAL INSURED ON ALL REQUIRED INSURANCE POLICIES.

C: BIDDING NOTES

- GENERAL CONTRACTOR TO PROVIDE A \$5,000 ALLOWANCE IN HIS/HER BID FOR UNFORESEEN/MISCELLANEOUS CONDITIONS. WHEN FIGURING THIS ALLOWANCE IN THE BID, CONTRACTOR IS TO INCLUDE ALL NECESSARY OVERHEAD AND PROFIT. THIS ALLOWANCE IS NOT FOR THE CONTRACTOR'S BENEFIT, AND IS ONLY AUTHORIZED TO CHARGE AGAINST THIS ALLOWANCE WHEN DIRECTED AND APPROVED BY JOLIET JUNIOR COLLEGE. THE CONTRACTOR WILL BE ALLOWED TO INVOICE FOR MATERIAL AND RAW LABOR COST ONLY.
- CONSTRUCTION SCHEDULE:**
CONSTRUCTION START AND SUBSTANTIAL COMPLETION IN ACCORDANCE WITH JJC FRONT-END DOCUMENTS.
- ALL LOUD AND DISRUPTIVE WORK IS TO BE PERFORMED BETWEEN THE HOURS OF 10:00 PM AND 6:00 AM.

STANDARD ABBREVIATIONS

AT	ANCHOR BOLT	EXP	EXPANSION	PL	PLATE
ABR	ABRASIVE	EXP CONST	EXPPOSED CONSTRUCTION	PL LAM	PLASTIC LAMINATE
AT-(1)	ACOUSTIC TILE CEILING (TYPE)	FD	FLOOR DRAIN	PL	PLASTER
AFF	ABOVE FINISH FLOOR	FDN	FOUNDATION	PLB'G	PLUMBING
AFG	ACOUSIC	FE	FIRE EXTINGUISHER	PLB'G CONTR	PLUMBING CONTRACTOR
ADD'N	ADDITION	FEC	FIRE EXTINGUISHER CABINET	PLYWD	PLYWOOD
ADD'L	ADDITIONAL	FHC	FIRE HOSE CABINET	PNT	PAINT
ADJ	ADJACENT	FIN	FINISH	PVC	POLYVINYL CHLORIDE
ADJT	ADJUSTABLE	FLR	FLOOR	PL-(1)	GYPSUM PLASTER (TYPE)
AL	ALUMINUM	FRT	FIRE RETARDANT TREATED (RATED)	R OR RAD	RADIUS
ALTERNATE	ANCHOR	FUR CHN'L	FURRING CHANNEL	R	RISER
ANCH	ACCESS PANEL	FTG	FOOTING	RD	ROUGH
AP	APPROXIMATE	GA	GALVANIZED	RF (1)	RUBBER FLOORING (TYPE)
APPROX	APPROXIMATE	GEN CONTR	GENERAL CONTRACTOR	RH	RIGHT HAND
ASPH	ASPHALT	GC	GENERAL CONTRACTOR	REF	REFERENCE
AUTO	AUTOMATIC	GL	GLASS	REF	REFERENCE
AVG	AVERAGE	GYP DB-(1)	GYP WALL BOARD (DRYWALL)(TYPE)	REINF	REINFORCING
BSMT	BASEMENT	GYP PL-(1)	GYP PLASTER (TYPE)	REQ'D	REQUIRED
BD	BOARD	H	HIGH	RM	ROOM
BITUM	BITUMINOUS/BITUMASTIC	HD	HEAVY DUTY	SF	SQUARE FOOT
BLDG	BUILDING	HD	HARD	SI	SQUARE INCH
BLK'G	BLOCKING (WOOD)	HDNR	HARDENER	SK	SINK
BM	BEAM	HD WD-(1)	HARD WOOD (TYPE)	SS	STAINLESS STEEL
B.M.	BENCH MARK	HDWRE	HARDWARE	SSK	SERVICE SINK
BT STL PL	BENT STEEL PLATE	HGT	HEIGHT	SO	SQUARE
BRG	BEARING	HM	HOLLOW METAL	SCHED	SCHEDULE
BRKT	BRACKET	HP	HIGH POINT	SEAL/HDNR	SEALER/HARDENER
BRK	BRICK	HORIZ	HORIZONTAL	SEC	SECTION
BTM	BOTTOM	HTG	HEATING	SHT	SHEET
BTW'N	BETWEEN	HVAC	HEATING/VENTILATING/AIR CONDITIONING	SIM	SIMILAR
CJ	CONSTRUCTION/CONTRACTION JOINT	IN	INCH	SOG	SLAB ON GRADE
CAB	CABINET	IN	INSIDE DIAMETER	SPEC	SPECIFICATION(S)
CEM PL-(1)	CEMENT PLASTER (TYPE)	ID	INCLUDE (D)	SPC'G	SPACING
CT PAV-(1)	CERAMIC PAVR TILE (TYPE)	INCL	INSULATION OR INSULATING	SPK'R	SPEAKER
OIPC	CAST-IN-PLACE CONCRETE	INSUL	INSULATION OR INSULATING	STN	STN
CLG	CEILING	KD	KNOCK DOWN	STD	STANDARD
CLR	CLEAR	L	LONG	STD WGT	STANDARD WEIGHT
CO	CLEAN OUT	LAM	LAMINATED	STL	STEEL
CMU	CONCRETE MASONRY UNIT	LAV	LAVATORY	STRLCT	STRUCTURAL OR STRUCTURE
COL	COLUMN	LHT	LEFT HAND	SUSP	SUSPENDED
COMB	COMBINATION	LP	LOW POINT	SYM	SYMMETRICAL
COMP	COMPRESSIBLE	LGT WGT	LIGHTWEIGHT	T	TREAD
COMP'TD	COMPACTED	LL	LIVE LOAD	T&G	TONGUE AND GROOVE
CONC	CONCRETE	LLH	LONG LEG HORIZONTAL	T/B	TOP OF BEAM
CONC OPNG	CONCRETE OPENING	LLV	LONG LEG VERTICAL	T/C	TOP OF CURB
COND	CONDITION	LVR	LOUVER	T/F	TOP OF FOUNDATION
CONT	CONTINUOUS	MO	MASONRY OPENING	T/S	TOP OF SLAB
CONTR	CONTRACT (OR)	MT	METAL THRESHOLD	T/STL	TOP OF STEEL
OPT-(1)	CARPET (TYPE)	MAS'Y	MASONRY	T/W	TOP OF WALL
CT-(1)	CERAMIC TILE (TYPE)	MAT'L	MATERIAL	TB (4)	TACKBOARD (LENGTH)
CTR	COUNTER	MAX	MAXIMUM	TYP	TOP OF MASONRY
CTR SK	COUNTER SINK	MB-(16)	MARKERBOARD-(LENGTH)	UNO	UNLESS NOTED OTHERWISE
CTS	CENTER(S)	MECH	MECHANICAL	VBC	VINYL BASE COVERED
CUH	CABINET UNIT HEATER	MECH CONTR	MECHANICAL CONTRACTOR	VBS	VINYL BASE STRAIGHT
CUV	CABINET UNIT VENTILATOR	MFR	MANUFACTURER	VCT	VINYL COMPOSITION TILE
DIA	DIAMETER	MIN	MINIMUM	VEN PL (1)	VENER PLASTER (TYPE)
DIM	DIMENSION	MISC	MISCELLANEOUS	VERT	VERTICAL
DN	DOWN	MSB	MOP SERVICE BASIN (SINK)	W	WIDE OR WIDTH
DR	DOOR	MT(D)	(MOUNTED)	W/	WITH
DWG'S	DRAWINGS	MTL	METAL	W/O	WITHOUT
DTL	DETAIL	NIC	NOT IN CONTRACT	WCG	WALL CORNER GUARD
DWLS	DOWELS	NOM	NOMINAL	WD	WOOD
EA	EACH	NTS	NOT TO SCALE	WON	WINDOW
EJ	EXPANSION JOINT	NO	NUMBER	WGT	WEIGHT
EL	ELEVATION	OA	OVERALL	WP	WATER PROOF
ELEC	ELECTRIC/ELECTRICAL	OC	ON CENTER	WWF	WELDED WIRE FABRIC
ELEC CONTR	ELECTRICAL CONTRACTOR	OD	OUTSIDE DIAMETER	WSB	WALL SERVICE BASIN
ELEV	ELEVATOR	OF	OUTSIDE FACE		
EMBED	EMBEDMENT	OPN'G	OPENING		
EMER	EMERGENCY	OPP	OPPOSITE		
EP PNT	EPOXY PAINT	OPP HD	OPPOSITE HAND		
EQ	EQUAL	PSF	POUNDS PER SQUARE FOOT		
EW	EACH WAY	PSI	POUNDS PER SQUARE INCH		
EW	ELECTRIC WATER COOLER	PT	PRESSURE TREATED		
EW	ELECTRIC WATER HEATER	PTN	PARITION		
ER-(26)	EXHIBIT RAIL (LENGTH)	PAV'T	PAVEMENT		
EXIST	EXISTING	PC	PIECE		
		PFM	PERMANENT FLOOR MAT		

THE MATERIALS, ABBREVIATIONS, AND DRAFTING SYMBOLS LEGEND ARE EACH AN ALL INCLUSIVE MASTER LIST USED BY THIS FIRM. THE INCLUSION OF THESE LEGENDS INTO THESE DOCUMENTS DOES NOT IMPLY THAT ALL THE SYMBOLS OR MATERIALS INCLUDED IN THESE LEGENDS ARE INCORPORATED INTO THIS PROJECT.

DRAFTING SYMBOLS AND MATERIALS LEGEND

DETAIL NUMBER	8
DRAWING NUMBER	A12.24
DETAIL NUMBER	23
DRAWING NUMBER	A7.19
DETAIL NUMBER	2
DRAWING NUMBER	6 49.19 5
DETAIL NUMBER	1
DRAWING NUMBER	AE.05
COLUMN NUMBER	26
LOCATION ELEVATION	T/ST FLR 100'-0"
ROOM NUMBER	204
DOOR NO. NEW	203.2
DOOR NO. EXISTING	203.1X
NOMINAL THICKNESS	48
CONSTRUCTION TYPE	
SPECIAL CONDITION	
KEYNOTE IDENTIFICATION	15.21
WINDOW TYPE IDENTIFICATION	2
TOILET ACCESSORY IDENTIFICATION	A
SPOT ELEVATION	T/ST FLR 100'-0"
CONCRETE	
BRICK MASONRY IN PLAN	
CONCRETE MASONRY IN PLAN (RUNNING BOND)	
CONCRETE MASONRY IN PLAN (STACK BOND)	
STONE MASONRY IN PLAN	
RAKED JOINT IN PLAN CTRL/EXP. JOINT IN PLAN	
BRICK MASONRY IN SECTION DETAIL	
CONCRETE MASONRY IN SECTION DETAIL	
STONE MASONRY IN SECTION DETAIL	
STEEL IN SECTION DETAIL	
DISCONTINUOUS WOOD BLOCKING IN SECTION	
CONTINUOUS WOOD BLOCKING IN SECTION	
FINISHED WOOD IN SECTION DETAIL	
RIGID BOARD INSULATION	
RIGID BOARD INSULATION (ROOFING)	
BATT INSULATION	
GYP SUM BOARD	
ACOUSTICAL CEILING PANEL	
BITUMINOUS CONCRETE (ASPHALT) PAVING IN SECTION	
AGGREGATE BALLAST, FILL OR BACKFILL IN SECTION	
UNDISTURBED EARTH	
EARTH BACKFILL	



PROJECT

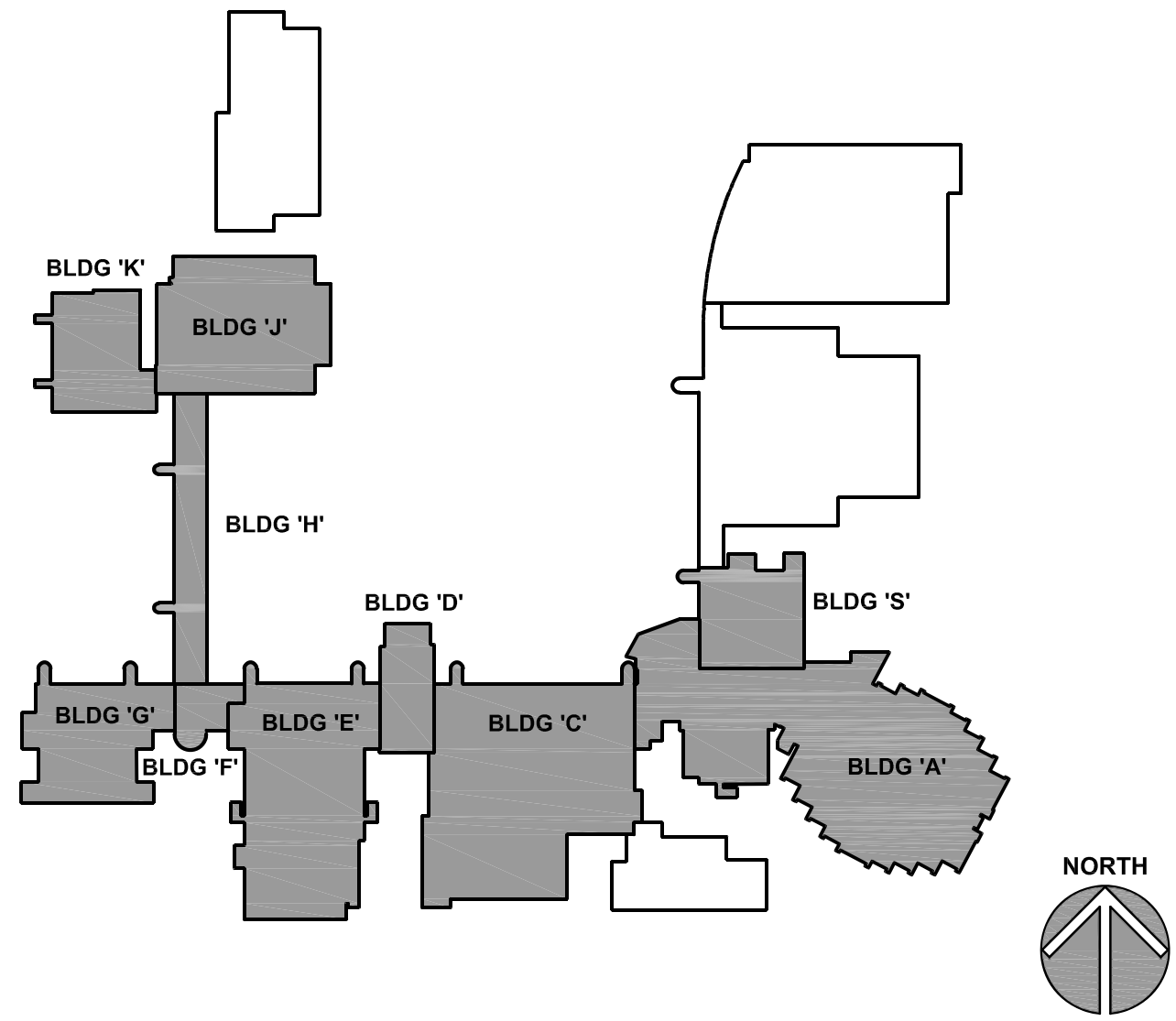
CAMPUS EXHAUST FAN REPLACEMENTS
JOLIET JUNIOR COLLEGE
1215 HOUBOLT ROAD
JOLIET, IL 60431

OWNER

JOLIET JUNIOR COLLEGE
1215 HOUBOLT ROAD
JOLIET, IL 60431

ARCHITECT/
ENGINEER

KLUBER ARCHITECTS + ENGINEERS
10 S. SHUMWAY AVE.
BATAVIA, ILLINOIS 60510
TEL 630-406-1213
FAX 630-406-9472
www.kluberinc.com



SEALS & CERTIFICATES

I HAVE PREPARED, OR CAUSED TO BE PREPARED UNDER MY DIRECT SUPERVISION, THE ATTACHED PLANS AND SPECIFICATIONS AND STATE THAT TO THE BEST OF MY KNOWLEDGE AND BELIEF, AND TO THE EXTENT OF MY CONTRACTUAL OBLIGATION, THEY ARE IN COMPLIANCE WITH IBC 2009 EDITION, THE ENVIRONMENTAL BARRIERS ACT AND THE ILLINOIS ACCESSIBILITY CODE.

KLUBER, INC. ILLINOIS PROFESSIONAL DESIGN FIRM LICENSE #184-001284

MECHANICAL ENGINEER'S SEAL

ELECTRICAL ENGINEER'S SEAL

"G" SERIES
"M" SERIES

"G" SERIES
"ME" SERIES

INDEX OF DRAWINGS

G100	COVER SHEET, GENERAL NOTES, SYMBOLS, & DRAWING INDEX
M311	FIRST FLOOR PLAN - BUILDINGS B, C, D AND S
M312	FIRST FLOOR PLAN - BUILDINGS D, E, F AND G
ME313	FIRST FLOOR PLAN - BUILDINGS H, J, AND K
ME321	SECOND FLOOR PLAN - BUILDINGS B, C, D AND S
ME322	SECOND FLOOR PLAN - BUILDINGS D, E, F AND G
M323	PARTIAL FLOOR PLANS - BUILDINGS J AND K
ME351	ROOF PLAN - BUILDINGS B, C, D AND S
ME352	ROOF PLAN - BUILDINGS D, E, F AND G
ME353	ROOF PLAN - BUILDINGS H, J AND K

BUILDING CODE DATA

2015 INTERNATIONAL BUILDING CODE
2014 ILLINOIS STATE PLUMBING CODE
2015 INTERNATIONAL MECHANICAL CODE
2015 INTERNATIONAL FUEL AND GAS CODE
2015 INTERNATIONAL ENERGY CODE
2015 INTERNATIONAL FIRE PREVENTION CODE
2018 IL ACCESSIBILITY CODE
2014 NATIONAL ELECTRIC CODE
LOCAL AMENDMENTS TO THE ABOVE CODES

Kluber
Architects + Engineers

Kluber, Inc.
Batavia, Illinois 60510
Tel. 630-406-1213
Gurnee, Illinois 60031
Tel. 847-236-3428
www.kluberinc.com

CAMPUS EXHAUST FAN REPLACEMENTS

JOLIET JUNIOR COLLEGE
1215 HOUBOLT ROAD
JOLIET, ILLINOIS 60431

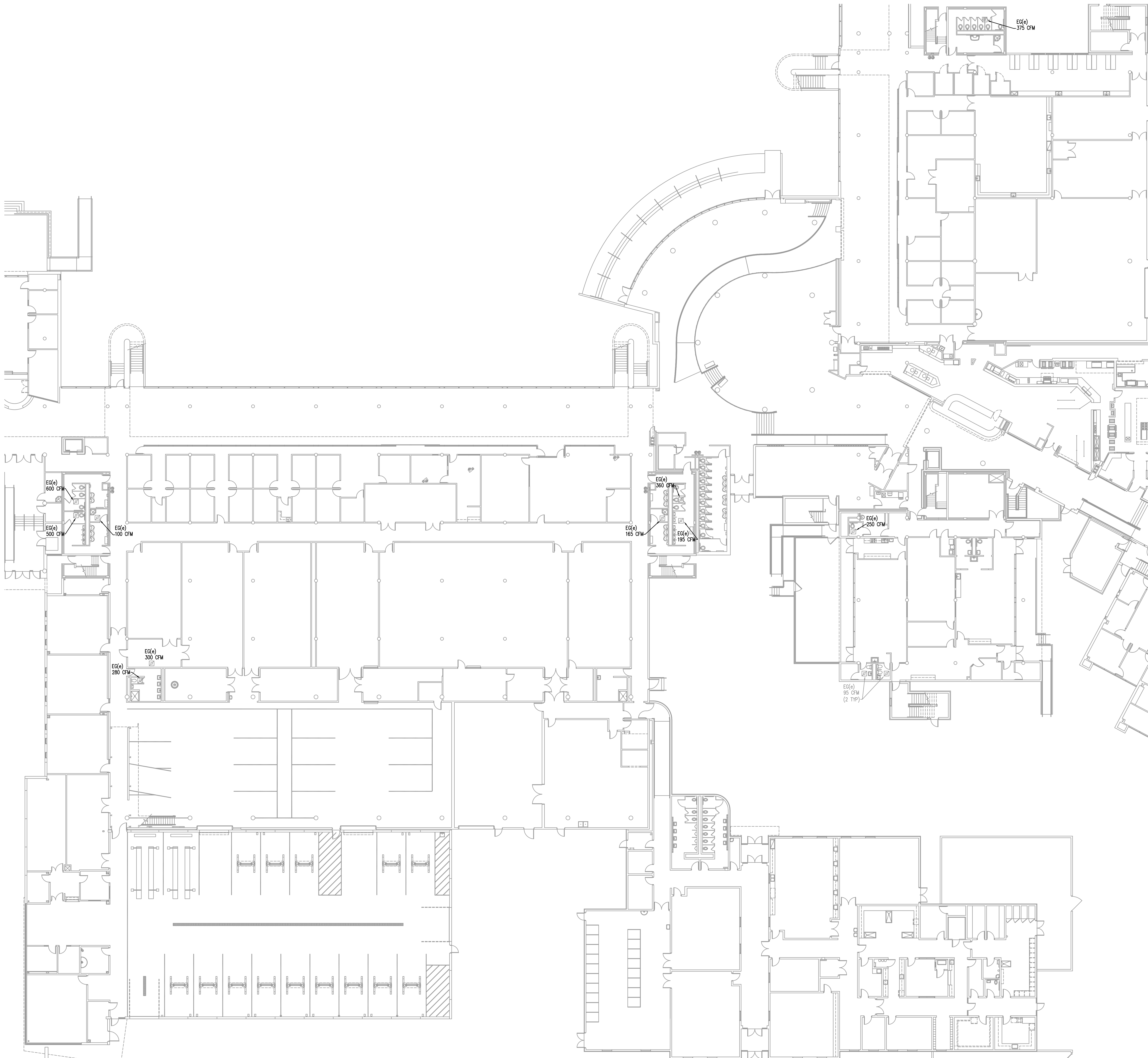
ISSUED
12/01/2018 BID DOCUMENTS

JOB NO. 18-292-1207
DRAWN BWG
CHECKED DDW
APPROVED DDW

SHEET TITLE
COVER SHEET,
GENERAL NOTES,
SYMBOLS AND
DRAWING INDEX

SHEET NUMBER

G100



FIRST FLOOR PLAN - BUILDINGS B, C, D AND S

SCALE: 1/16" = 1'-0"

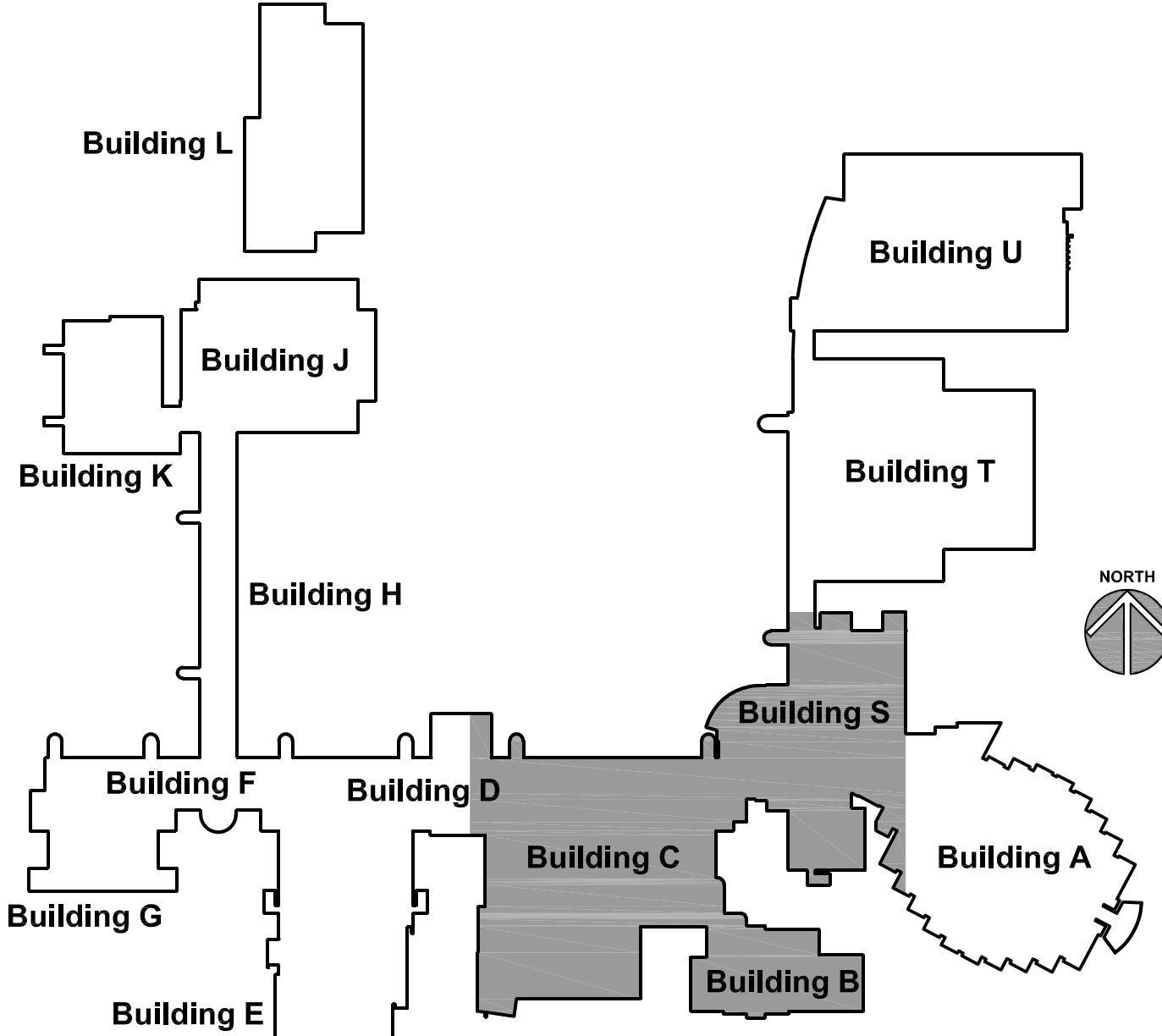
KEYNOTES

KEYNOTES ARE TYPICALLY NOT DUPLICATED WITHIN A GIVEN DETAIL. AN UN-KEYNOTED ITEM IN A DETAIL IS THE SAME AS A KEYNOTED ITEM HAVING THE SAME APPEARANCE WITHIN THE SAME DETAIL.

GENERAL NOTES

1. REFER TO DRAWING G100 FOR PROJECT GENERAL NOTES.
2. ALL PIPING AND DUCTWORK IS SHOWN DIAGRAMMATICALLY AND DOES NOT SHOW ALL REQUIRED FITTINGS, OFFSETS, DROPS AND RISES. THE CONTRACTOR IS RESPONSIBLE TO PROVIDE ALL MATERIAL AND LABOR FOR A COMPLETE AND WORKING SYSTEM. COORDINATE WITH OTHER TRADES FOR SPACE AVAILABLE AND RELATIVE LOCATIONS OF EQUIPMENT, PIPING, DUCTWORK, ETC.
3. GENERALLY, SMALL DIAMETER PIPE RUNS FROM DRIPS, CONDENSATE PANS AND OTHER SERVICES ARE NOT SHOWN BUT MUST BE PROVIDED.
4. SPACE ALLOCATION, COORDINATION WITH ELECTRICAL, ARCHITECTURAL & OTHER MECHANICAL COMPONENTS HAVE BEEN MADE WITH RESPECT TO ALL EQUIPMENT SCHEDULED ON THESE DRAWINGS AND IN THE SPECIFICATIONS OF THE FIRST NAMED MANUFACTURER ONLY. OTHER MANUFACTURERS ARE ACCEPTABLE PROVIDED THEY MEET PERFORMANCE REQUIREMENTS AND AFOREMENTIONED COORDINATION.
5. OBTAIN AND PAY ALL COSTS FOR PERMITS, LICENSES, CERTIFICATE FILING AND ALL INSPECTIONS BY AUTHORITIES HAVING JURISDICTION.

KEY PLAN



Kluber
Architects + Engineers

Kluber, Inc.
Bloomington, Illinois 61810
Tel. 309.426.2113
Gurnee, Illinois 60031
Tel. 847.336.4426
www.klubertec.com

CAMPUS EXHAUST FAN REPLACEMENTS
JOLIET JUNIOR COLLEGE
12115 HOBBS ROAD
JOLIET, ILLINOIS 60431

ISSUED	12/02/2018	BID DOCUMENTS
JOB NO.	18-292-1207	
DRAWN	BWG	
CHECKED	DDW	
APPROVED	DDW	
SHEET TITLE	FIRST FLOOR PLAN - BUILDINGS B, C, D AND S	
SHEET NUMBER	M311	

CAMPUS EXHAUST FAN REPLACEMENTS

[illegible]

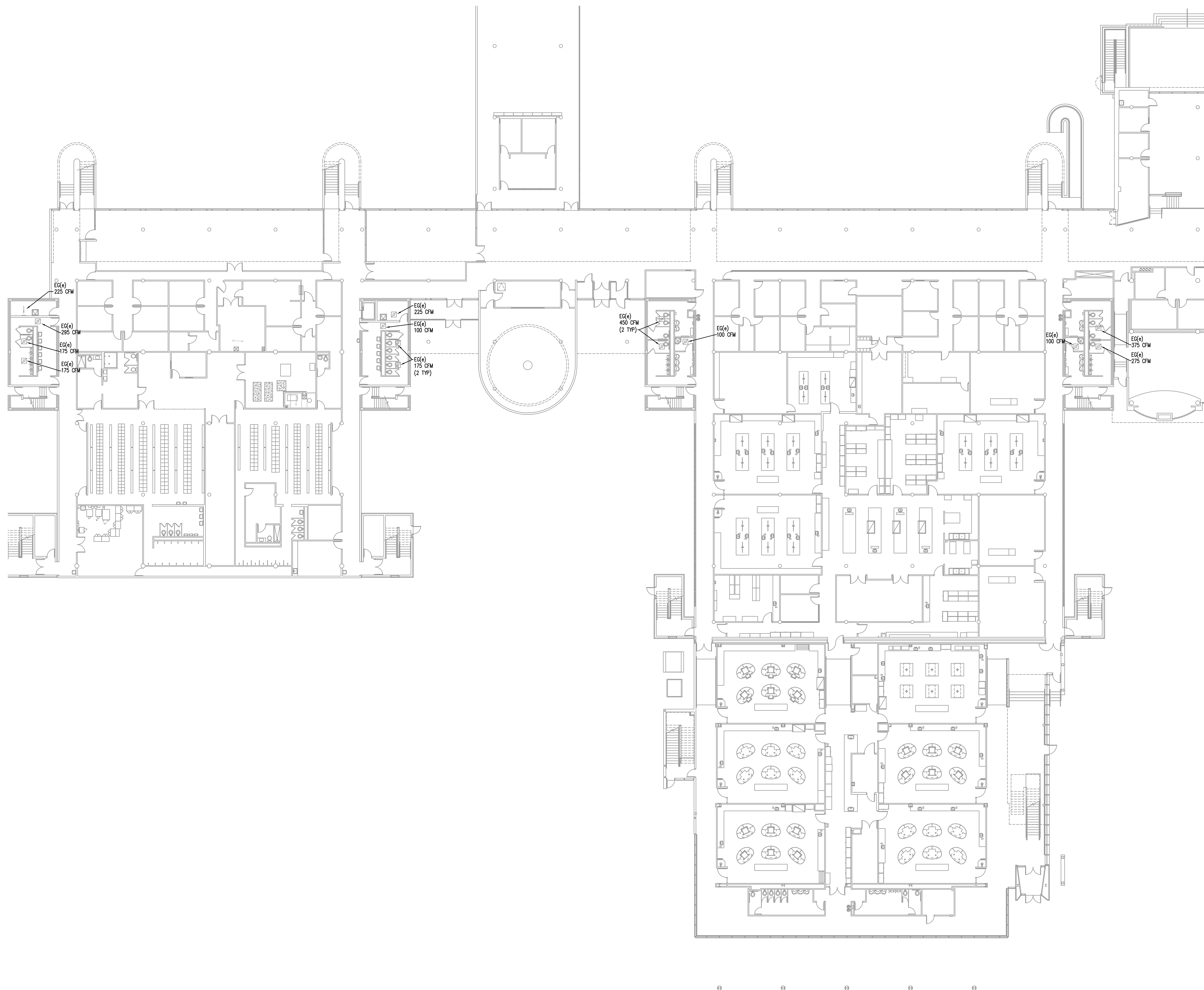
JOB NO.	18-292-1207
DRAWN	BWG
CHECKED	DDW
APPROVED	DDW

SHEET TITLE

**FIRST FLOOR PLAN
BUILDINGS D, E, F
AND G**

QUEST NUMBER

M312



KEYNOTES ARE TYPICALLY NOT DUPLICATED WITHIN A GIVEN DETAIL.
AN UN-KEYNOTED ITEM IN A DETAIL IS THE SAME AS A KEYNOTED
ITEM HAVING THE SAME APPEARANCE WITHIN THE SAME DETAIL.

1. REFER TO DRAWING G100 FOR PROJECT GENERAL NOTES.
2. ALL PIPING AND DUCTWORK IS SHOWN DIAGRAMMATICALLY AND DOES NOT SHOW ALL REQUIRED FITTINGS, OFFSETS, DRIPS AND RISERS. THE CONTRACTOR IS RESPONSIBLE TO PROVIDE ALL MATERIAL AND LABOR FOR A COMPLETE AND WORKING SYSTEM. COORDINATE WITH OTHER TRADES FOR SPACE AVAILABLE AND RELATIVE LOCATIONS OF EQUIPMENT, PIPING, DUCTWORK, ETC.
3. GENERALLY, SMALL DIAMETER PIPE RUNS FROM DRIPS, CONDENSATE PANS AND OTHER SERVICES ARE NOT SHOWN BUT MUST BE PROVIDED.
4. SPACE ALLOCATION, COORDINATION WITH ELECTRICAL, ARCHITECTURAL & OTHER MECHANICAL COMPONENTS HAVE BEEN MADE WITH RESPECT TO ALL EQUIPMENT SCHEDULED ON THESE DRAWINGS AND IN THE SPECIFICATIONS OF THE NAMED MANUFACTURER ONLY. OTHER MANUFACTURES ARE ACCEPTABLE PROVIDED THEY MEET PERFORMANCE REQUIREMENTS AND AFOREMENTIONED COORDINATION.
5. OBTAIN AND PAY ALL COSTS FOR PERMITS, LICENSES, CERTIFICATE FILING AND ALL INSPECTIONS BY AUTHORITIES HAVING JURISDICTION.

FIRST FLOOR PLAN - BUILDINGS D, E, F AND G
SCALE: 1/16" = 1'-0"

KEYNOTES

KEYNOTES ARE TYPICALLY NOT DUPLICATED WITHIN A GIVEN DETAIL. AN UN-KEYNOTED ITEM IN A DETAIL IS THE SAME AS A KEYNOTED ITEM HAVING THE SAME APPEARANCE WITHIN THE SAME DETAIL.

23.207 REMOVE OLD EXHAUST FAN. REMOVE DUCTWORK AS REQUIRED FOR NEW EXHAUST FAN. PROVIDE ALL TRANSITIONS AND FITTINGS AS REQUIRED TO CONNECT NEW EXHAUST FANS TO EXISTING DUCTWORK.

26.201 DISCONNECT, PRESERVE, AND PROTECT EXISTING ELECTRICAL CONNECTION TO EXHAUST FAN TO BE REPLACED. RECONNECT EXISTING BRANCH CIRCUITRY AND EXTEND AS NECESSARY TO NEW EQUIPMENT TO ENSURE A COMPLETE AND OPERATIONAL SYSTEM. EXTEND EXISTING BRANCH CIRCUITRY AND PROVIDE ELECTRICAL CONNECTION TO MOTORIZED DAMPERS IN ACCORDANCE WITH MANUFACTURER'S INSTRUCTIONS TO ENSURE A COMPLETE AND OPERATIONAL SYSTEM.

EXHAUST FAN SEQUENCE OF OPERATIONS

IEF-9: THE EXHAUST FAN SHALL BE ENERGIZED BY ROOM LIGHT SWITCH.
IEF-10: THE EXHAUST FAN SHALL BE ENERGIZED BY ROOM LIGHT SWITCH.

FAN SCHEDULE

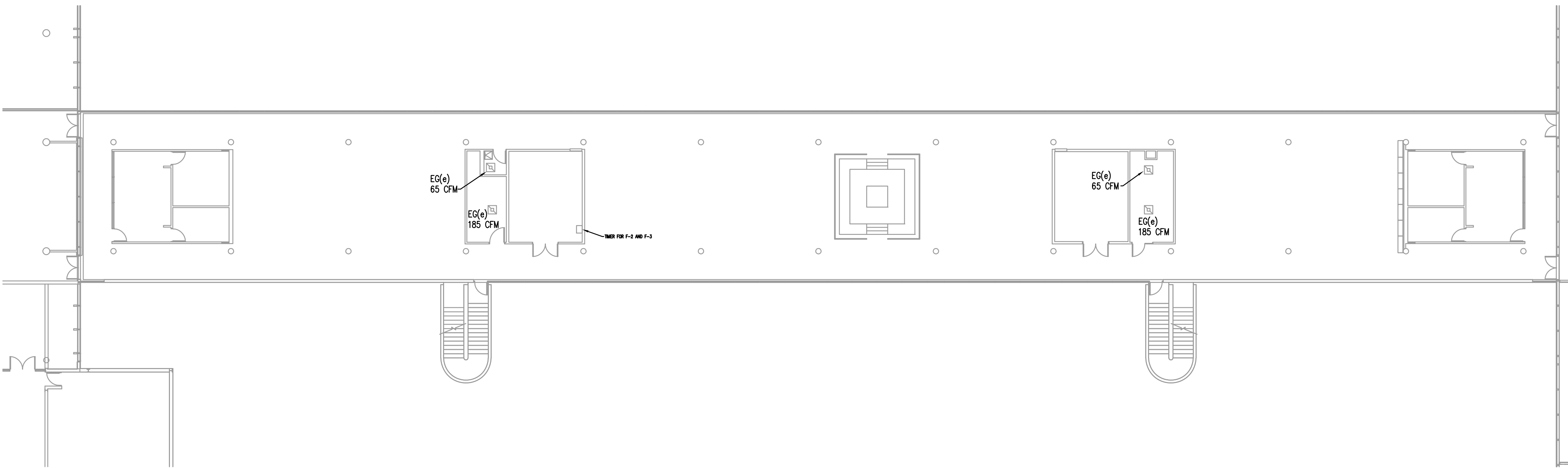
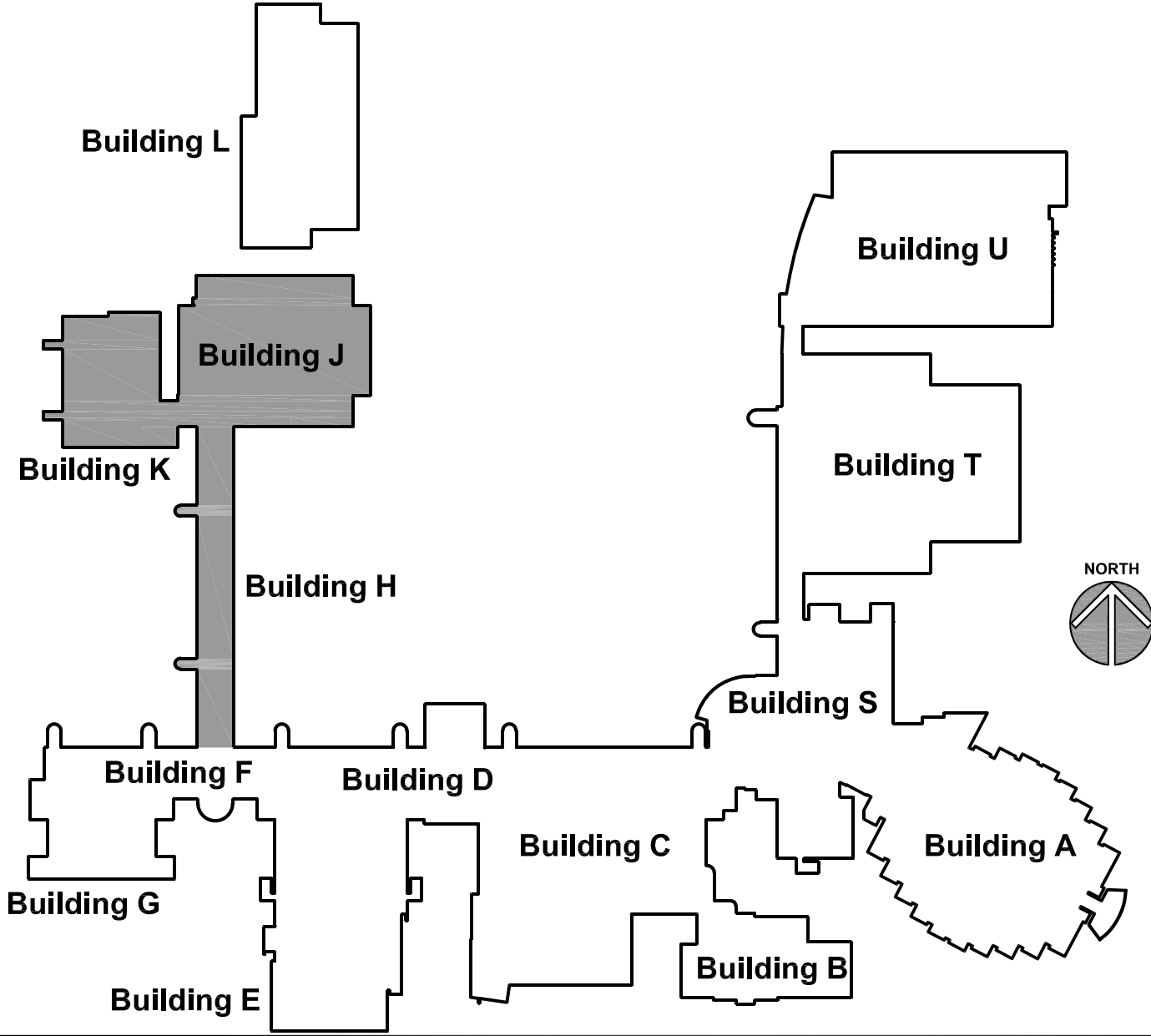
MARK	AIR FLOW RATE (CFM)	EXTERNAL S.P. (IN WG)	TYPE	MOTOR (HP)	ELECTRICAL (V/PH/Hz)	LOCATION	MODEL	NOTES
IEF-9	930	0.5	CENTRIFUGAL	1/3	115/1/60	RM 201	SQND-VF	1
IEF-10	930	0.5	CENTRIFUGAL	1/3	115/1/60	RM 201	SQND-VF	1

NOTES
1. MODEL BASED ON COOK.

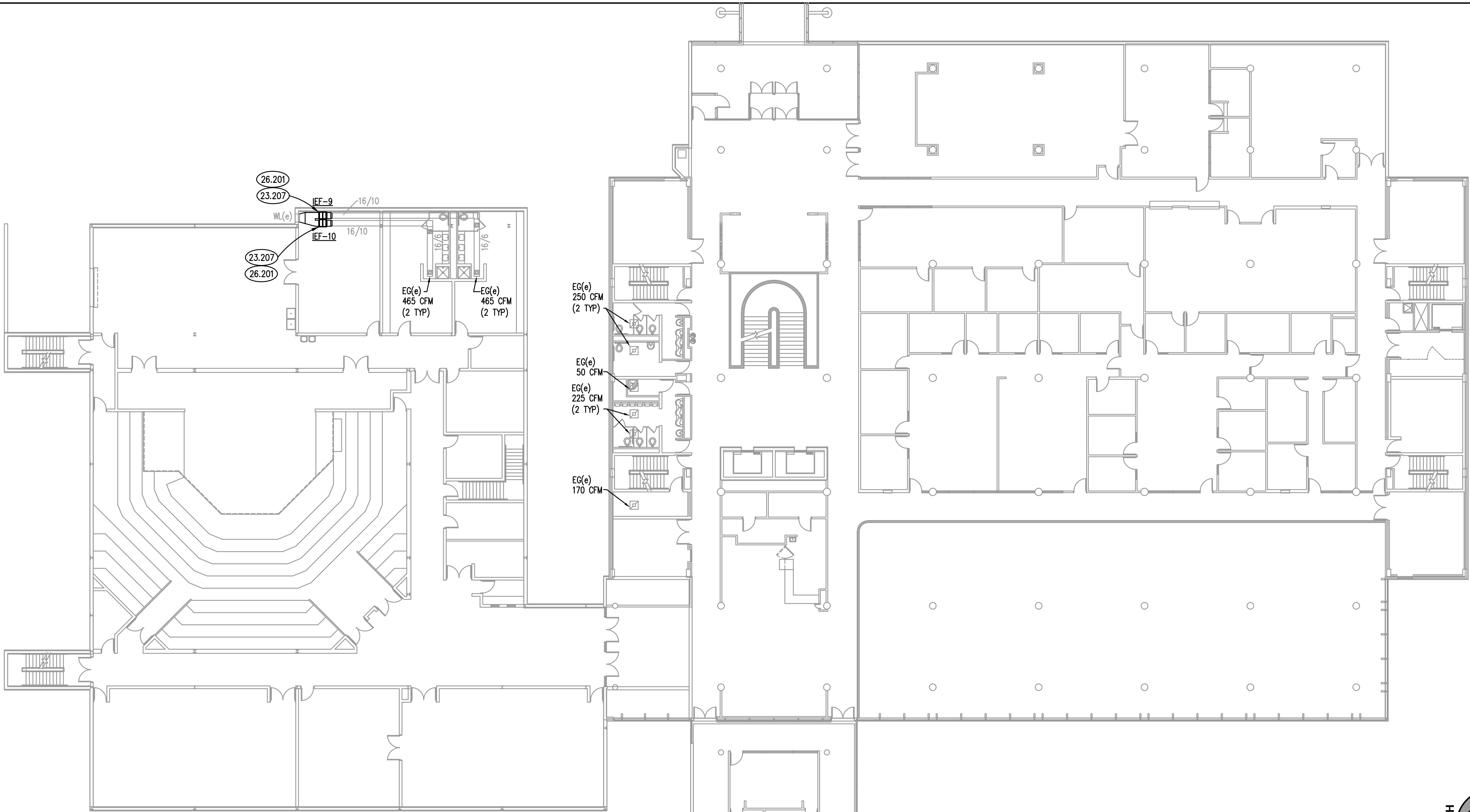
GENERAL NOTES

- REFER TO DRAWING G100 FOR PROJECT GENERAL NOTES.
- ALL PIPING AND DUCTWORK IS SHOWN DIAGRAMMATICALLY AND DOES NOT SHOW ALL REQUIRED FITTINGS, OFFSETS, DROPS AND RISERS. THE CONTRACTOR IS RESPONSIBLE TO PROVIDE ALL MATERIAL AND LABOR FOR A COMPLETE AND WORKING SYSTEM. COORDINATE WITH OTHER TRADES FOR SPACE AVAILABLE AND RELATIVE LOCATIONS OF EQUIPMENT, PIPING, DUCTWORK, ETC.
- GENERALLY, SMALL DIAMETER PIPE RUNS FROM DRIPS, CONDENSATE PANS AND OTHER SERVICES ARE NOT SHOWN BUT MUST BE PROVIDED.
- SPACE ALLOCATION, COORDINATION WITH ELECTRICAL, ARCHITECTURAL & OTHER MECHANICAL COMPONENTS HAVE BEEN MADE WITH RESPECT TO ALL EQUIPMENT SCHEDULED ON THESE DRAWINGS AND IN THE SPECIFICATIONS OF THE FIRST NAMED MANUFACTURER ONLY. OTHER MANUFACTURERS ARE ACCEPTABLE PROVIDED THEY MEET PERFORMANCE REQUIREMENTS AND AFOREMENTIONED COORDINATION.
- OBTAIN AND PAY ALL COSTS FOR PERMITS, LICENSES, CERTIFICATE FILING AND ALL INSPECTIONS BY AUTHORITIES HAVING JURISDICTION.

KEY PLAN



FIRST FLOOR PLAN - BUILDINGS H ①
SCALE: 1/16" = 1'-0"



FIRST FLOOR PLAN - BUILDINGS H, J AND K ②
SCALE: 1/16" = 1'-0"

KEYNOTES

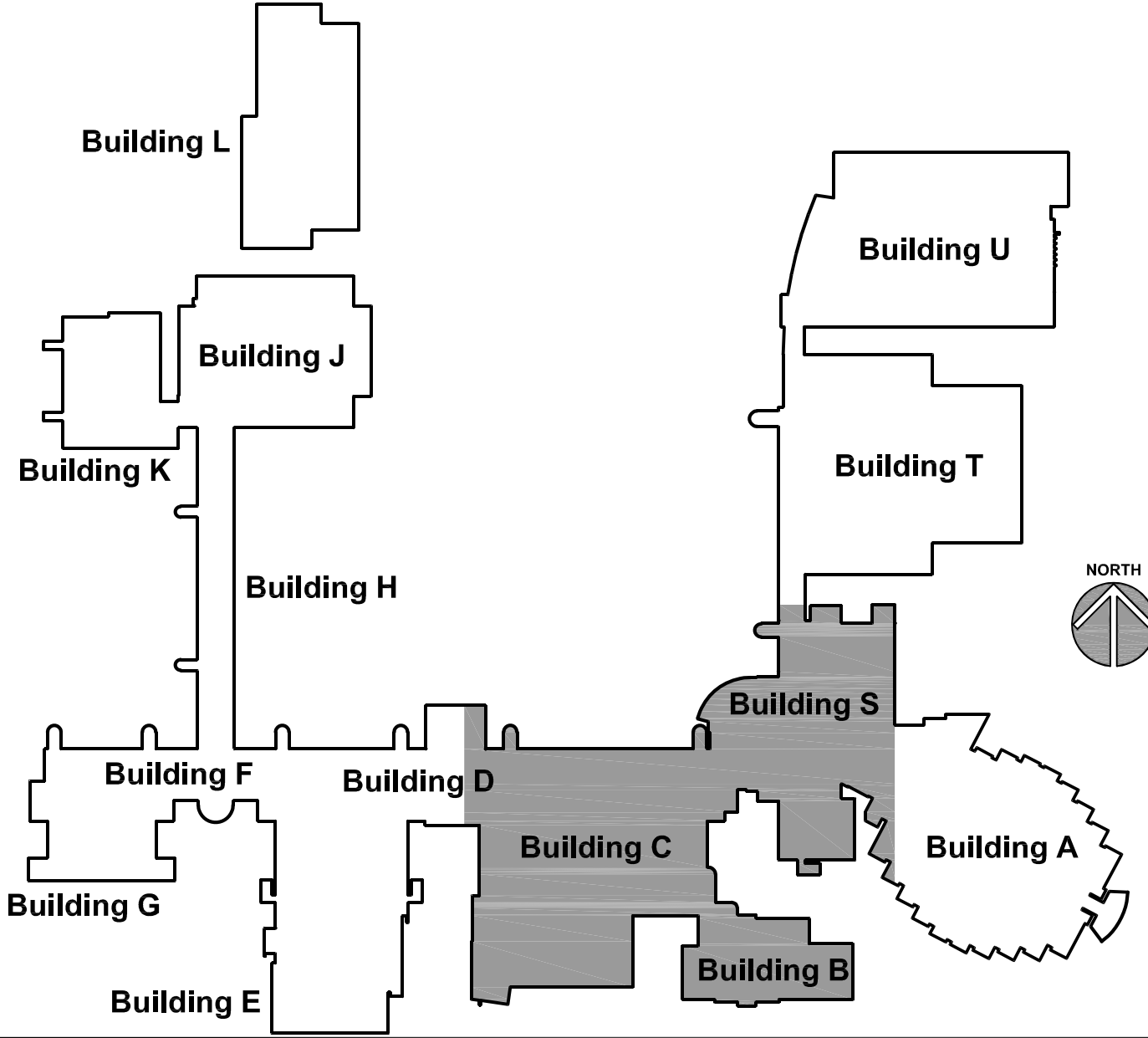
KEYNOTES ARE TYPICALLY NOT DUPLICATED WITHIN A GIVEN DETAIL. AN UN-KEYNOTED ITEM IN A DETAIL IS THE SAME AS A KEYNOTED ITEM HAVING THE SAME APPEARANCE WITHIN THE SAME DETAIL.

- 23.211 FUME HOOD EXHAUST FAN TO BE TIED INTO BUILDING AUTOMATION SYSTEM. SEE ROOF PLAN FOR SEQUENCE OF OPERATIONS.
- 26.204 DEMOLISH EXISTING TIMER CONTROLLER FOR EXHAUST FANS. NEW EXHAUST FANS TO BE CONTROLLED VIA BUILDING AUTOMATION SYSTEM.

GENERAL NOTES

1. REFER TO DRAWING G100 FOR PROJECT GENERAL NOTES.
2. ALL PIPING AND DUCTWORK IS SHOWN DIAGRAMMATICALLY AND DOES NOT SHOW ALL REQUIRED FITTINGS, OFFSETS, DROPS AND RISES. THE CONTRACTOR IS RESPONSIBLE TO PROVIDE ALL MATERIAL AND LABOR FOR A COMPLETE AND WORKING SYSTEM. COORDINATE WITH OTHER TRADES FOR SPACE AVAILABLE AND RELATIVE LOCATIONS OF EQUIPMENT, PIPING, DUCTWORK, ETC.
3. GENERALLY, SMALL DIAMETER PIPE RUNS FROM DRIPS, CONDENSATE PANS AND OTHER SERVICES ARE NOT SHOWN BUT MUST BE PROVIDED.
4. SPACE ALLOCATION, COORDINATION WITH ELECTRICAL, ARCHITECTURAL & OTHER MECHANICAL COMPONENTS HAVE BEEN MADE WITH RESPECT TO ALL EQUIPMENT SCHEDULED ON THESE DRAWINGS AND IN THE SPECIFICATIONS OF THE FIRST NAMED MANUFACTURER ONLY. OTHER MANUFACTURERS ARE ACCEPTABLE PROVIDED THEY MEET PERFORMANCE REQUIREMENTS AND AFOREMENTIONED COORDINATION.
5. OBTAIN AND PAY ALL COSTS FOR PERMITS, LICENSES, CERTIFICATE FILING AND ALL INSPECTIONS BY AUTHORITIES HAVING JURISDICTION.

KEY PLAN



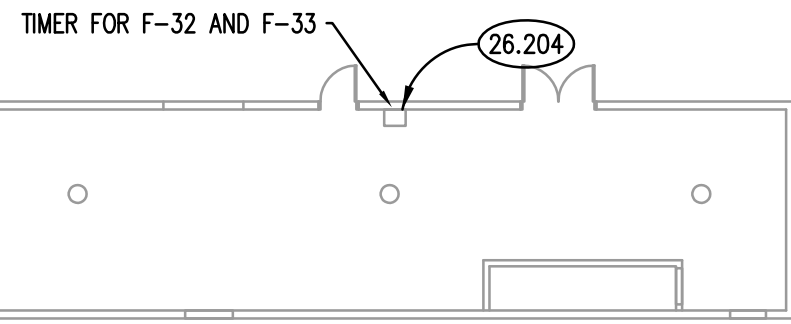
--	--	--	--	--	--	--	--	--	--	--	--	--	--	--	--	--	--	--	--	--	--	--	--	--	--	--	--	--	--	--	--	--	--	--	--	--	--	--	--	--	--	--	--	--	--	--	--	--	--	--	--	--	--	--	--	--	--	--	--	--	--	--	--	--	--	--	--	--	--	--	--	--	--	--	--	--	--	--	--	--	--	--	--	--	--	--	--	--	--	--	--	--	--	--	--	--	--	--	--	--	--	--	--	--	--	--	--	--	--	--	--	--	--	--	--	--	--	--	--	--	--	--	--	--	--	--	--	--	--	--	--	--	--	--	--	--	--	--	--	--	--	--	--	--	--	--	--	--	--	--	--	--	--	--	--	--	--	--	--	--	--	--	--	--	--	--	--	--	--	--	--	--	--	--	--	--	--	--	--	--	--	--	--	--	--	--	--	--	--	--	--	--	--	--	--	--	--	--	--	--	--	--	--	--	--	--	--	--	--	--	--	--	--	--	--	--	--	--	--	--	--	--	--	--	--	--	--	--	--	--	--	--	--	--	--	--	--	--	--	--	--	--	--	--	--	--	--	--	--	--	--	--	--	--	--	--	--	--	--	--	--	--	--	--	--	--	--	--	--	--	--	--	--	--	--	--	--	--	--	--	--	--	--	--	--	--	--	--	--	--	--	--	--	--	--	--	--	--	--	--	--	--	--	--	--	--	--	--	--	--	--	--	--	--	--	--	--	--	--	--	--	--	--	--	--	--	--	--	--	--	--	--	--	--	--	--	--	--	--	--	--	--	--	--	--	--	--	--	--	--	--	--	--	--	--	--	--	--	--	--	--	--	--	--	--	--	--	--	--	--	--	--	--	--	--	--	--	--	--	--	--	--	--	--	--	--	--	--	--	--	--	--	--	--	--	--	--	--	--	--	--	--	--	--	--	--	--	--	--	--	--	--	--	--	--	--	--	--	--	--	--	--	--	--	--	--	--	--	--	--	--	--	--	--	--	--	--	--	--	--	--	--	--	--	--	--	--	--	--	--	--	--	--	--	--	--	--	--	--	--	--	--	--	--	--	--	--	--	--	--	--	--	--	--	--	--	--	--	--	--	--	--	--	--	--	--	--	--	--	--	--	--	--	--	--	--	--	--	--	--	--	--	--	--	--	--	--	--	--	--	--	--	--	--	--	--	--	--	--	--	--	--	--	--	--	--	--	--	--	--	--	--	--	--	--	--	--	--	--	--	--	--	--	--	--	--	--	--	--	--	--	--	--	--	--	--	--	--	--	--	--	--	--	--	--	--	--	--	--	--	--	--	--	--	--	--	--	--	--	--	--	--	--	--	--	--	--	--	--	--	--	--	--	--	--	--	--	--	--	--	--	--	--	--	--	--	--	--	--	--	--	--	--	--	--	--	--	--	--	--	--	--	--	--	--	--	--	--	--	--	--	--	--	--	--	--	--	--	--	--	--	--	--	--	--	--	--	--	--	--	--	--	--	--	--	--	--	--	--	--	--	--	--	--	--	--	--	--	--	--	--	--	--	--	--	--	--	--	--	--	--	--	--	--	--	--	--	--	--	--	--	--	--	--	--	--	--	--	--	--	--	--	--	--	--	--	--	--	--	--	--	--	--	--	--	--	--	--	--	--	--	--	--	--	--	--	--	--	--	--	--	--	--	--	--	--	--	--	--	--	--	--	--	--	--	--	--	--	--	--	--	--	--	--	--	--	--	--	--	--	--	--	--	--	--	--	--	--	--	--	--	--	--	--	--	--	--	--	--	--	--	--	--	--	--	--	--	--	--	--	--	--	--	--	--	--	--	--	--	--	--	--	--	--	--	--	--	--	--	--	--	--	--	--	--	--	--	--	--	--	--	--	--	--	--	--	--	--	--	--	--	--	--	--	--	--	--	--	--	--	--	--	--	--	--	--	--	--	--	--	--	--	--	--	--	--	--	--	--	--	--	--	--	--	--	--	--	--	--	--	--	--	--	--	--	--	--	--	--	--	--	--	--	--	--	--	--	--	--	--	--	--	--	--	--	--	--	--	--	--	--	--	--	--	--	--	--	--	--	--	--	--	--	--	--	--	--	--	--	--	--	--	--	--	--	--	--	--	--	--	--	--	--	--	--	--	--	--	--	--	--	--	--	--	--	--	--	--	--	--	--	--	--	--	--	--	--	--	--	--	--	--	--	--	--	--	--	--	--	--	--	--	--	--	--	--	--	--	--	--	--	--	--	--	--	--	--	--	--	--	--	--	--	--	--	--	--	--	--	--	--	--	--	--	--	--	--	--	--	--	--	--	--	--	--	--	--	--	--	--	--	--	--	--	--	--	--	--	--	--	--	--	--	--	--	--	--	--	--	--	--	--	--	--	--	--	--	--	--	--	--	--	--	--	--	--	--	--	--	--	--	--	--	--	--	--	--	--	--	--	--	--	--	--	--	--	--	--	--	--	--	--	--	--	--	--	--	--	--	--	--	--	--	--	--	--	--	--	--	--	--	--	--	--	--	--	--	--	--	--	--	--	--	--	--	--	--	--	--	--	--	--	--	--	--	--	--	--	--	--	--	--	--	--	--	--	--	--	--	--	--	--	--	--	--	--	--	--	--	--	--	--	--	--	--	--	--	--	--	--	--	--	--	--	--	--	--	--	--	--	--	--	--	--	--	--	--	--	--	--	--	--	--	--	--	--	--	--	--	--	--	--	--	--	--	--	--	--	--	--	--	--	--	--	--	--	--	--	--	--	--	--	--	--	--	--	--	--	--	--	--	--	--	--	--	--	--	--	--	--	--	--	--	--	--	--	--	--	--	--	--	--	--	--	--	--	--	--	--	--	--	--	--

SECOND FLOOR PLAN - BUILDINGS B, C, D AND S
SCALE: 1/16" = 1'-0" 1

KEYNOTES

KEYNOTES ARE TYPICALLY NOT DUPLICATED WITHIN A GIVEN DETAIL. AN UN-KEYNOTED ITEM IN A DETAIL IS THE SAME AS A KEYNOTED ITEM HAVING THE SAME APPEARANCE WITHIN THE SAME DETAIL.

26.204 DEMOLISH EXISTING TIMER CONTROLLER FOR EXHAUST FANS. NEW EXHAUST FANS TO BE CONTROLLED VIA BUILDING AUTOMATION SYSTEM.



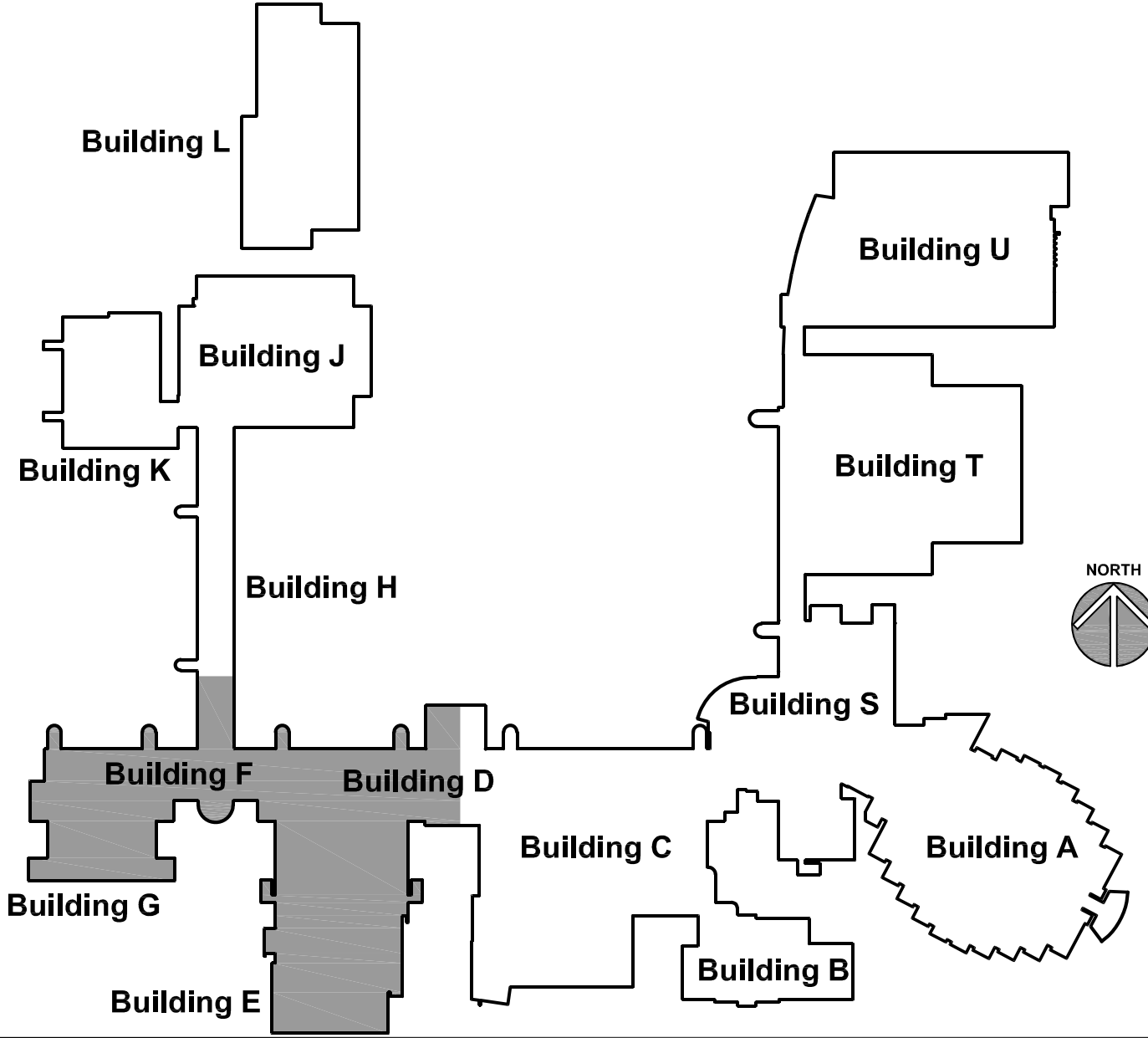
BUILDING D PENTHOUSE
SCALE: 1/16" = 1'-0"

2

GENERAL NOTES

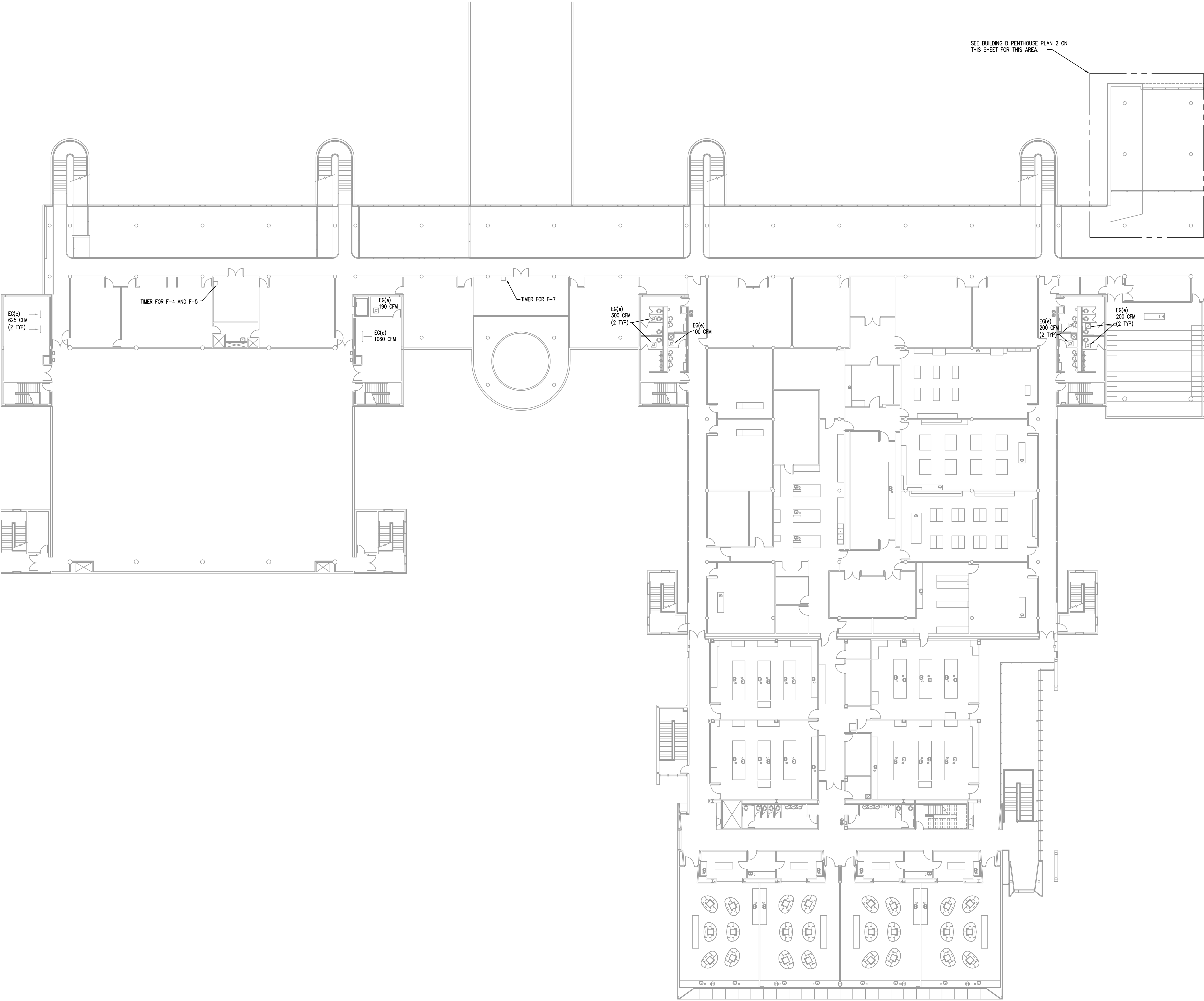
- REFER TO DRAWING G100 FOR PROJECT GENERAL NOTES.
- ALL PIPING AND DUCTWORK IS SHOWN DIAGRAMMATICALLY AND DOES NOT SHOW ALL REQUIRED FITTINGS, OFFSETS, DROPS AND RISES. THE CONTRACTOR IS RESPONSIBLE TO PROVIDE ALL MATERIAL AND LABOR FOR A COMPLETE AND WORKING SYSTEM. COORDINATE WITH OTHER TRADES FOR SPACE AVAILABLE AND RELATIVE LOCATIONS OF EQUIPMENT, PIPING, DUCTWORK, ETC.
- GENERALLY, SMALL DIAMETER PIPE RUNS FROM DRIPS, CONDENSATE PANS AND OTHER SERVICES ARE NOT SHOWN BUT MUST BE PROVIDED.
- SPACE ALLOCATION, COORDINATION WITH ELECTRICAL, ARCHITECTURAL & OTHER MECHANICAL COMPONENTS HAVE BEEN MADE WITH RESPECT TO ALL EQUIPMENT SCHEDULED ON THESE DRAWINGS AND IN THE SPECIFICATIONS OF THE FIRST NAMED MANUFACTURER ONLY. OTHER MANUFACTURERS ARE ACCEPTABLE PROVIDED THEY MEET PERFORMANCE REQUIREMENTS AND AFOREMENTIONED COORDINATION.
- OBTAIN AND PAY ALL COSTS FOR PERMITS, LICENSES, CERTIFICATE FILING AND ALL INSPECTIONS BY AUTHORITIES HAVING JURISDICTION.

KEY PLAN



SECOND FLOOR PLAN - BUILDINGS D, E, F AND G
SCALE: 1/16" = 1'-0"

1



ISSUED	
12/02/2018	BID DOCUMENTS

JOB NO.	18-292-1207
DRAWN	BWG/ATR
CHECKED	DDW/MTK
APPROVED	DDW/MTK

SHEET TITLE

SECOND FLOOR PLAN
- BUILDINGS D, E, F
AND G

SHEET NUMBER

ME322

ISSUED	
12/05/2018	BID DOCUMENTS

JOB NO.	18-292-1207
DRAWN	BWG
CHECKED	DDW
APPROVED	DDW

SHEET TITLE	
PARTIAL FLOOR PLANS - BUILDINGS J AND K	

SHEET NUMBER

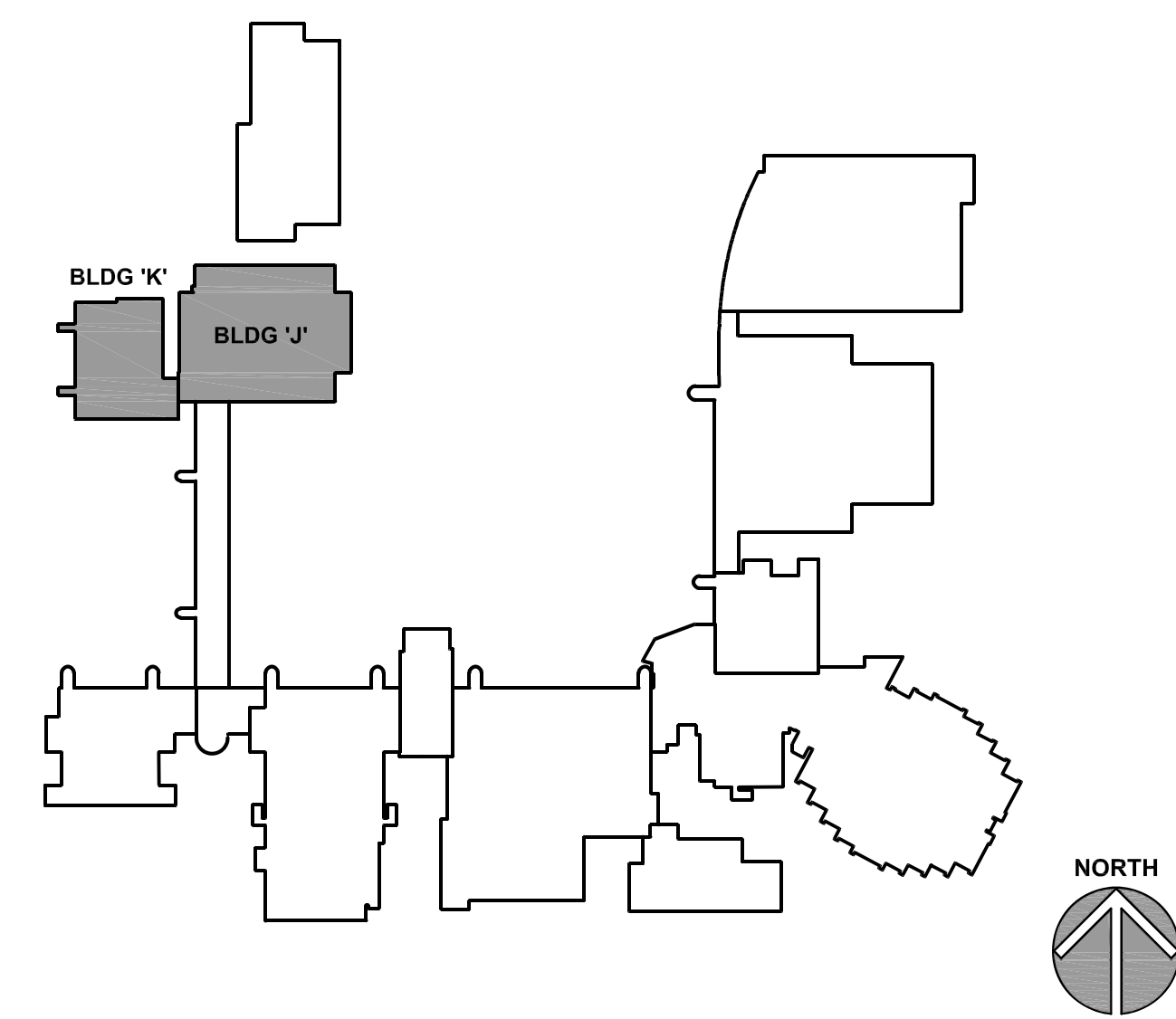
KEYNOTES

KEYNOTES ARE TYPICALLY NOT DUPLICATED WITHIN A GIVEN DETAIL. AN UN-KEYNOTED ITEM IN A DETAIL IS THE SAME AS A KEYNOTED ITEM HAVING THE SAME APPEARANCE WITHIN THE SAME DETAIL.

GENERAL NOTES

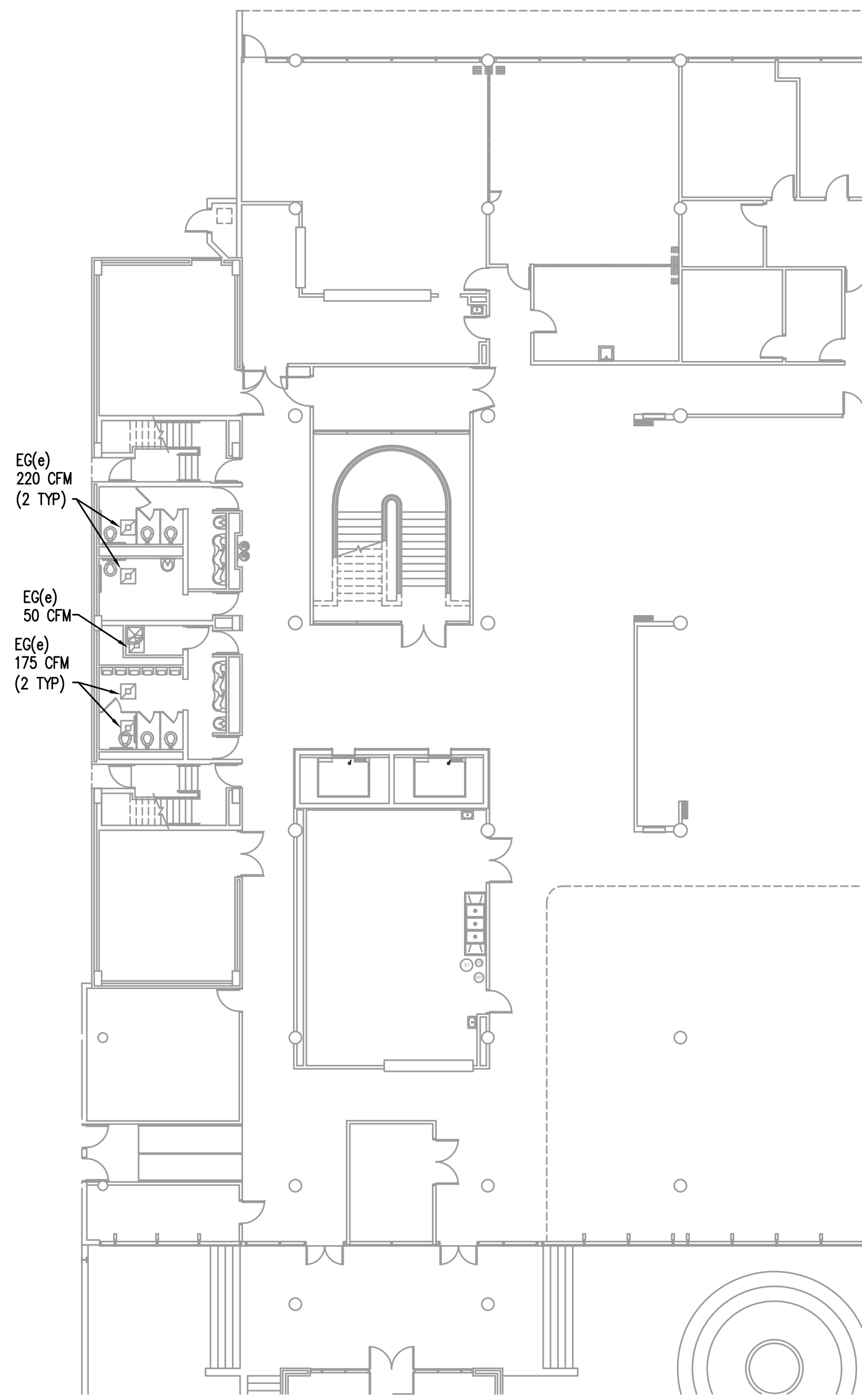
- REFER TO DRAWING G100 FOR PROJECT GENERAL NOTES.
- ALL PIPING AND DUCTWORK IS SHOWN DIAGRAMMATICALLY AND DOES NOT SHOW ALL REQUIRED FITTINGS, OFFSETS, DROPS AND RISES. THE CONTRACTOR IS RESPONSIBLE TO PROVIDE ALL MATERIAL AND LABOR FOR A COMPLETE AND WORKING SYSTEM. COORDINATE WITH OTHER TRADES FOR SPACE AVAILABLE AND RELATIVE LOCATIONS OF EQUIPMENT, PIPING, DUCTWORK, ETC.
- GENERALLY, SMALL DIAMETER PIPE RUNS FROM DRIPS, CONDENSATE PANS AND OTHER SERVICES ARE NOT SHOWN BUT MUST BE PROVIDED.
- SPACE ALLOCATION, COORDINATION WITH ELECTRICAL, ARCHITECTURAL & OTHER MECHANICAL COMPONENTS HAVE BEEN MADE WITH RESPECT TO ALL EQUIPMENT SCHEDULED ON THESE DRAWINGS AND IN THE SPECIFICATIONS OF THE FIRST NAMED MANUFACTURER ONLY. OTHER MANUFACTURERS ARE ACCEPTABLE PROVIDED THEY MEET PERFORMANCE REQUIREMENTS AND AFOREMENTIONED COORDINATION.
- OBTAIN AND PAY ALL COSTS FOR PERMITS, LICENSES, CERTIFICATE FILING AND ALL INSPECTIONS BY AUTHORITIES HAVING JURISDICTION.

KEY PLAN



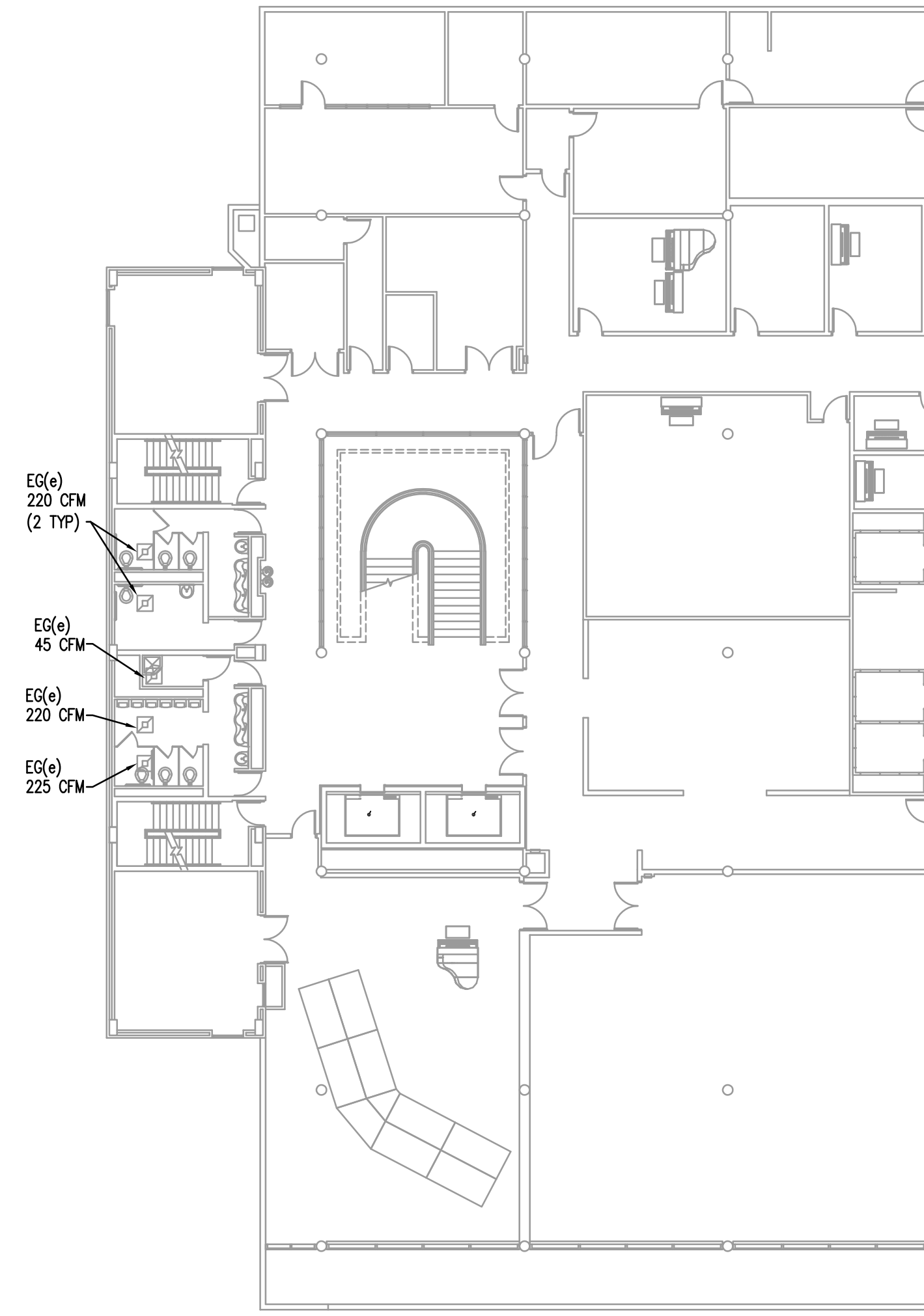
PARTIAL GROUND FLOOR PLAN - BUILDINGS J

SCALE: 1/16" = 1'-0"



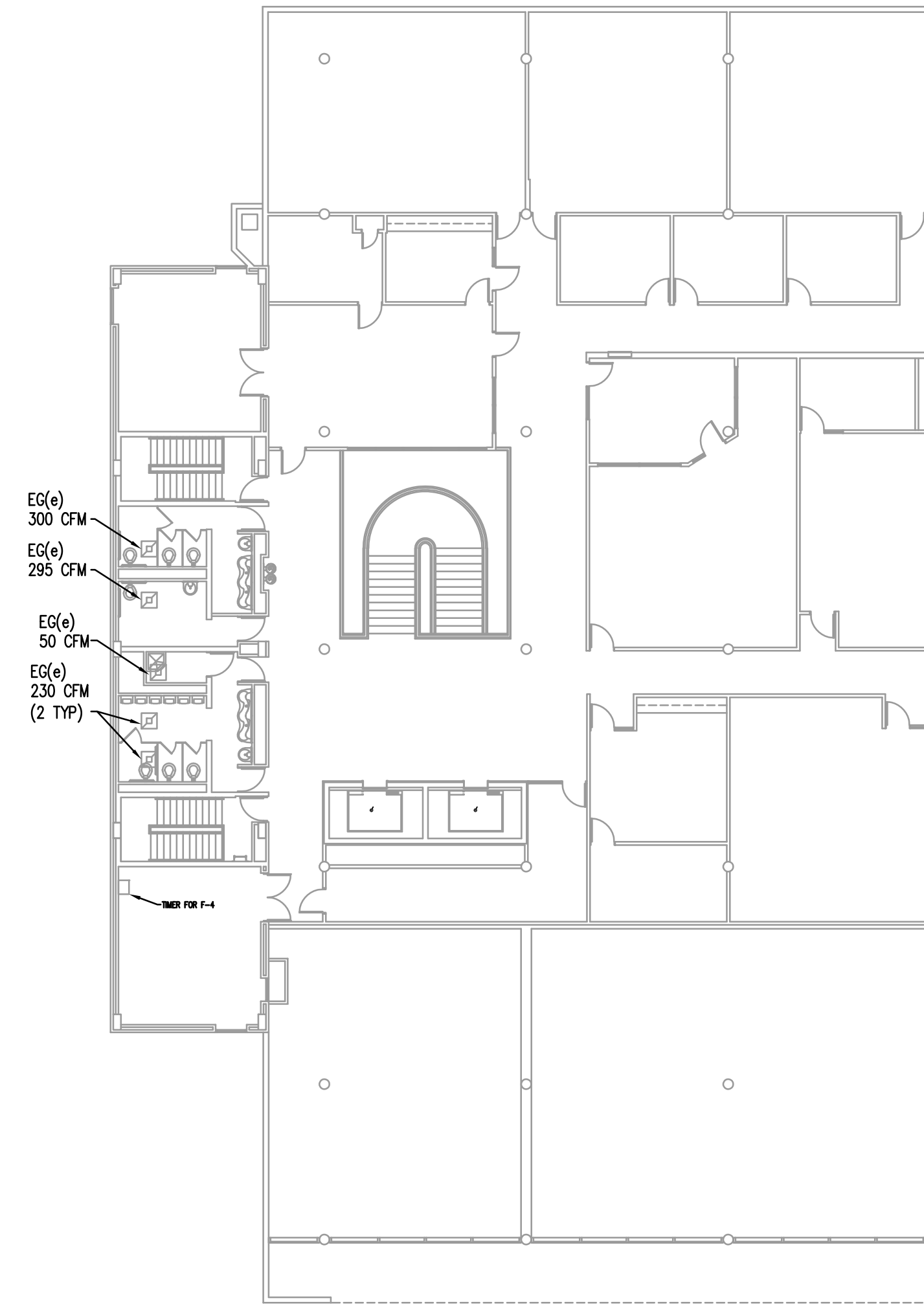
PARTIAL THIRD FLOOR PLAN - BUILDINGS J

SCALE: 1/16" = 1'-0"



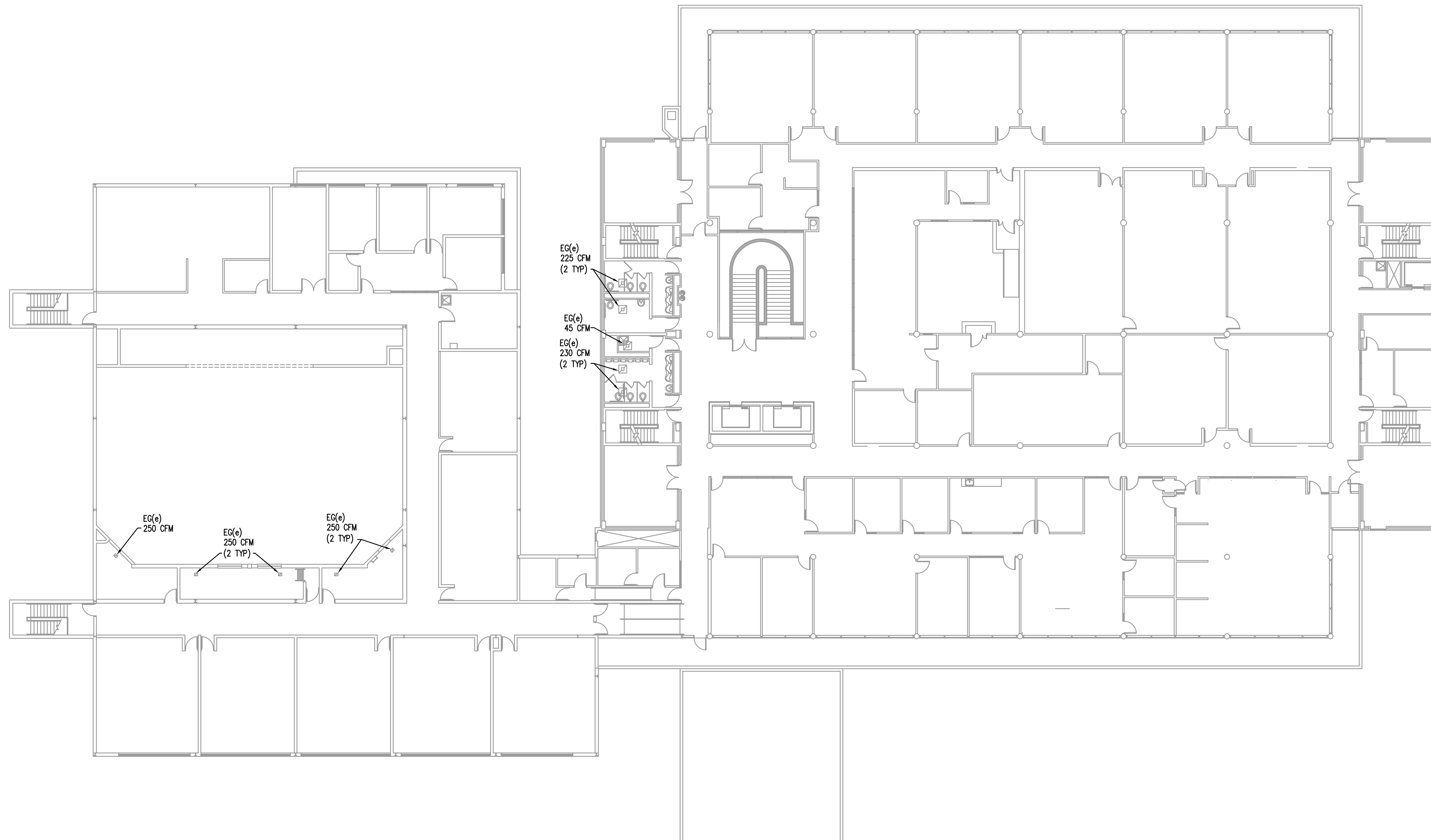
PARTIAL FOURTH FLOOR PLAN - BUILDINGS J

SCALE: 1/16" = 1'-0"



SECOND FLOOR PLAN - BUILDINGS J AND K

SCALE: 1/16" = 1'-0"

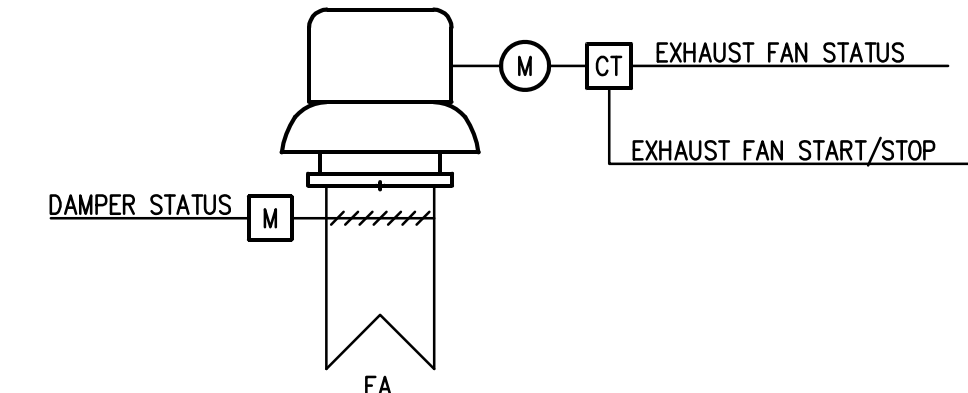


KEYNOTES

KEYNOTES ARE TYPICALLY NOT DUPLICATED WITHIN A GIVEN DETAIL. AN UN-KEYNOTED ITEM IN A DETAIL IS THE SAME AS A KEYNOTED ITEM HAVING THE SAME APPEARANCE WITHIN THE SAME DETAIL.

- 23.200 REMOVE OLD EXHAUST FAN AND PROVIDE NEW EXHAUST FAN. PROVIDE ALL MATERIALS AND LABOR AS REQUIRED TO MODIFY CURB TO FIT NEW EXHAUST FAN. PROVIDE ADAPTABLE CURB IF REQUIRED FOR NEW EXHAUST FAN.
- 23.201 APPROXIMATE DIMENSIONS OF EXISTING CURB IS 20" X 20". FIELD VERIFY EXACT DIMENSIONS PRIOR TO CONSTRUCTION.
- 23.202 APPROXIMATE DIMENSIONS OF EXISTING CURB IS 24" X 24". FIELD VERIFY EXACT DIMENSIONS PRIOR TO CONSTRUCTION.
- 23.206 TIE NEW FAN INTO THE BUILDING AUTOMATION SYSTEM.
- 23.208 TIE EXISTING EXHAUST FAN INTO BUILDING AUTOMATION SYSTEM.
- 23.209 REMOVE OLD EXHAUST FAN AND PROVIDE NEW EXHAUST FAN. PROVIDE ALL MODIFICATIONS AS REQUIRED FOR NEW EXHAUST FAN. MOUNT NEW EXHAUST FAN ON EXISTING ROOF RAILS.
- 23.210 PROVIDE NEW GOOSENECK DISCHARGE ON NEW EXHAUST FAN. GOOSENECK SHALL BE WHITE IN COLOR.
- 26.200 DEMOLISH EXISTING ELECTRICAL CONNECTION TO EXHAUST FAN TO BE REPLACED. REMOVE ALL ABANDONED BRANCH CIRCUITRY.
- 26.201 DISCONNECT, PRESERVE, AND PROTECT EXISTING ELECTRICAL CONNECTION TO EXHAUST FAN TO BE REPLACED. RECONNECT EXISTING BRANCH CIRCUITRY AND EXTEND AS NECESSARY TO NEW EQUIPMENT TO ENSURE A COMPLETE AND OPERATIONAL SYSTEM. EXTEND EXISTING BRANCH CIRCUITRY AND PROVIDE ELECTRICAL CONNECTION TO MOTORIZED DAMPERS IN ACCORDANCE WITH MANUFACTURER'S INSTRUCTIONS TO ENSURE A COMPLETE AND OPERATIONAL SYSTEM.
- 26.203 PROVIDE ELECTRICAL CONNECTION TO EF-40. HOMERUN 3#12, #12G, 1/2" C TO SPARE 20 AMPERE, 3 POLE BREAKER IN PANEL GA-25/27/29. PANEL GA IS LOCATED IN MECHANICAL ROOM C2024. EXHAUST FAN TO BE CONTROLLED THROUGH EXISTING SWITCH LOCATED IN AUTO SHOP C1001. PROVIDE BRANCH CIRCUITRY THROUGH EXISTING SWITCH TO ENSURE A COMPLETE AND OPERATIONAL SYSTEM.

EXHAUST FAN CONTROL SCHEMATIC



POINTS LIST

EXHAUST FAN	HARDWARE				SOFTWARE			
	AI	AO	DI	DO	SCHED	TREND	ALARM	GRAPHIC
FAN START/STOP				X	X			X
FAN STATUS			X			X	X	X
DAMPER STATUS			X			X	X	X
SWITCH STATUS			X			X		X

SEQUENCE OF OPERATIONS

- F-33: THE EXHAUST FAN SHALL BE ENERGIZED AS SCHEDULED IN THE BUILDING AUTOMATION SYSTEM.
- F-36: THE EXHAUST FAN SHALL BE ENERGIZED BY TIMER.
- F-40: THE EXHAUST FAN SHALL BE ENERGIZED BY ROOM SWITCH.
- F-43: THE EXHAUST FAN SHALL BE ENERGIZED BY TIMER.
- F-47: THE EXHAUST FAN SHALL BE ENERGIZED BY TIMER.
- F-52: THE EXHAUST FAN SHALL BE ENERGIZED AS SCHEDULED IN THE BUILDING AUTOMATION SYSTEM.
- F-53-54: THE EXHAUST FAN SHALL BE ENERGIZED BY HOOD SWITCH. A SCHEDULE SHALL BE CREATED IN THE BUILDING AUTOMATION SYSTEM TO DE-ENERGIZE THE FAN AT SCHEDULED TIMES.

FAN SCHEDULE

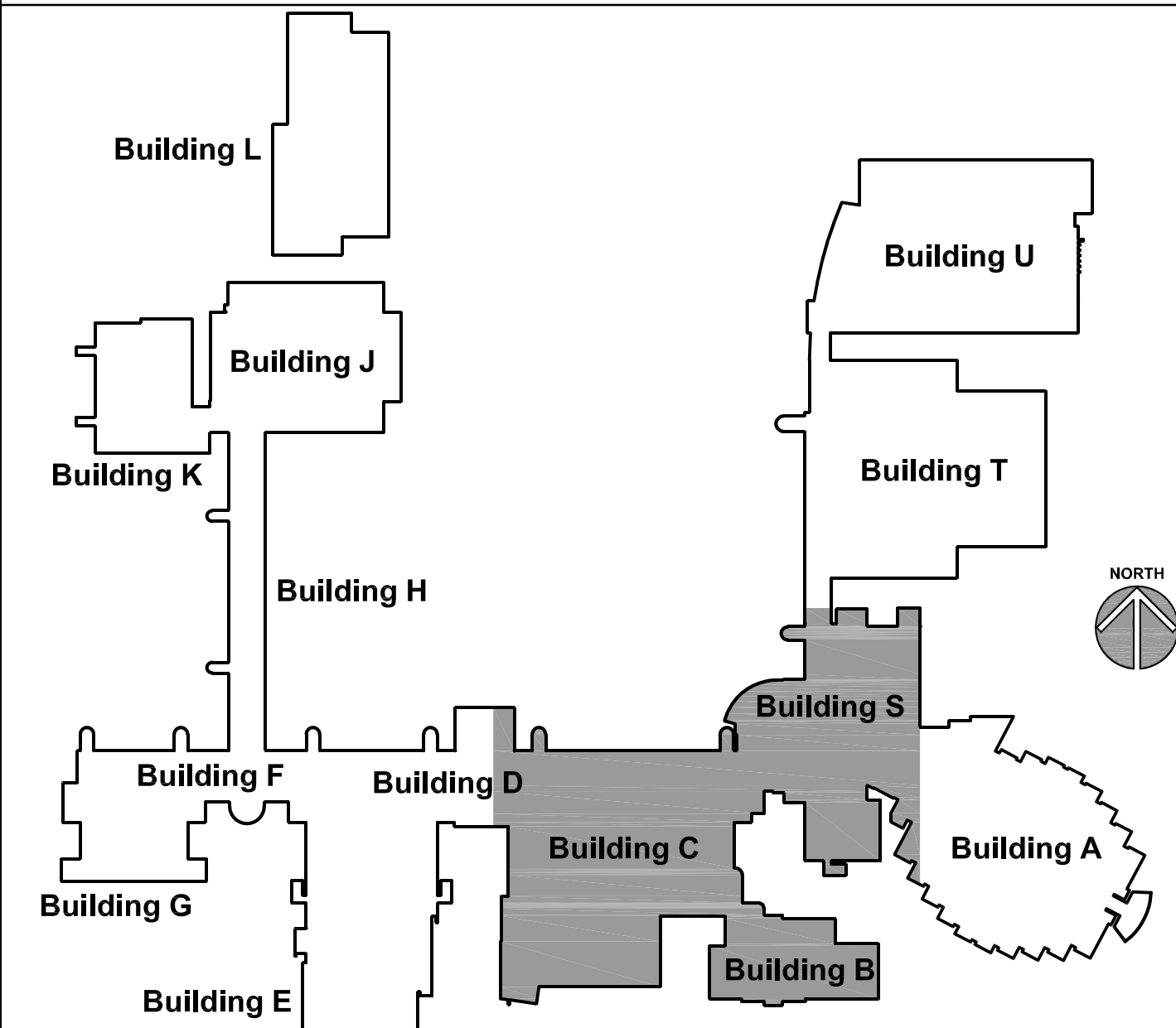
MARK	AIR FLOW RATE (CFM)	EXTERNAL S.P. (IN WG)	TYPE	MOTOR (HP)	ELECTRICAL (V/PH/Hz)	LOCATION	MODEL	NOTES
F-33	2000	0.5	CENTRIFUGAL	1/3	115/1/60	D ROOF	ACED-VF	1, 2
F-36	580	0.5	CENTRIFUGAL	1/4	115/1/60	C ROOF	ACED-EC	1, 2
F-40	5250	3.0	CENTRIFUGAL	7.5	480/3/60	C ROOF	OMB-35	2, 3
F-43	1500	0.5	CENTRIFUGAL	1/3	115/1/60	C ROOF	ACED-VF	1, 2
F-46	190	0.25	CENTRIFUGAL	1/4	115/1/60	A ROOF	ACED-EC	1, 2
F-47	535	0.375	CENTRIFUGAL	1/4	115/1/60	A ROOF	ACED-EC	1, 2
F-52	825	0.5	CENTRIFUGAL	1/3	115/1/60	S ROOF	ACED-VF	1, 2

- NOTES
- MODEL BASED ON COOK.
 - FAN COLOR - WHITE.
 - MODEL BASED ON CAR-MON.

GENERAL NOTES

- REFER TO DRAWING G100 FOR PROJECT GENERAL NOTES.
- ALL PIPING AND DUCTWORK IS SHOWN DIAGRAMMATICALLY AND DOES NOT SHOW ALL REQUIRED FITTINGS, OFFSETS, DROPS AND RISES. THE CONTRACTOR IS RESPONSIBLE TO PROVIDE ALL MATERIAL AND LABOR FOR A COMPLETE AND WORKING SYSTEM. COORDINATE WITH OTHER TRADES FOR SPACE AVAILABLE AND RELATIVE LOCATIONS OF EQUIPMENT, PIPING, DUCTWORK, ETC.
- GENERALLY, SMALL DIAMETER PIPE RUNS FROM DRIPS, CONDENSATE PANS AND OTHER SERVICES ARE NOT SHOWN BUT MUST BE PROVIDED.
- SPACE ALLOCATION, COORDINATION WITH ELECTRICAL, ARCHITECTURAL & OTHER MECHANICAL COMPONENTS HAVE BEEN MADE WITH RESPECT TO ALL EQUIPMENT SCHEDULED ON THESE DRAWINGS AND IN THE SPECIFICATIONS OF THE FIRST NAMED MANUFACTURER ONLY. OTHER MANUFACTURERS ARE ACCEPTABLE PROVIDED THEY MEET PERFORMANCE REQUIREMENTS AND AFOREMENTIONED COORDINATION.
- OBTAIN AND PAY ALL COSTS FOR PERMITS, LICENSES, CERTIFICATE FILING AND ALL INSPECTIONS BY AUTHORITIES HAVING JURISDICTION.

KEY PLAN

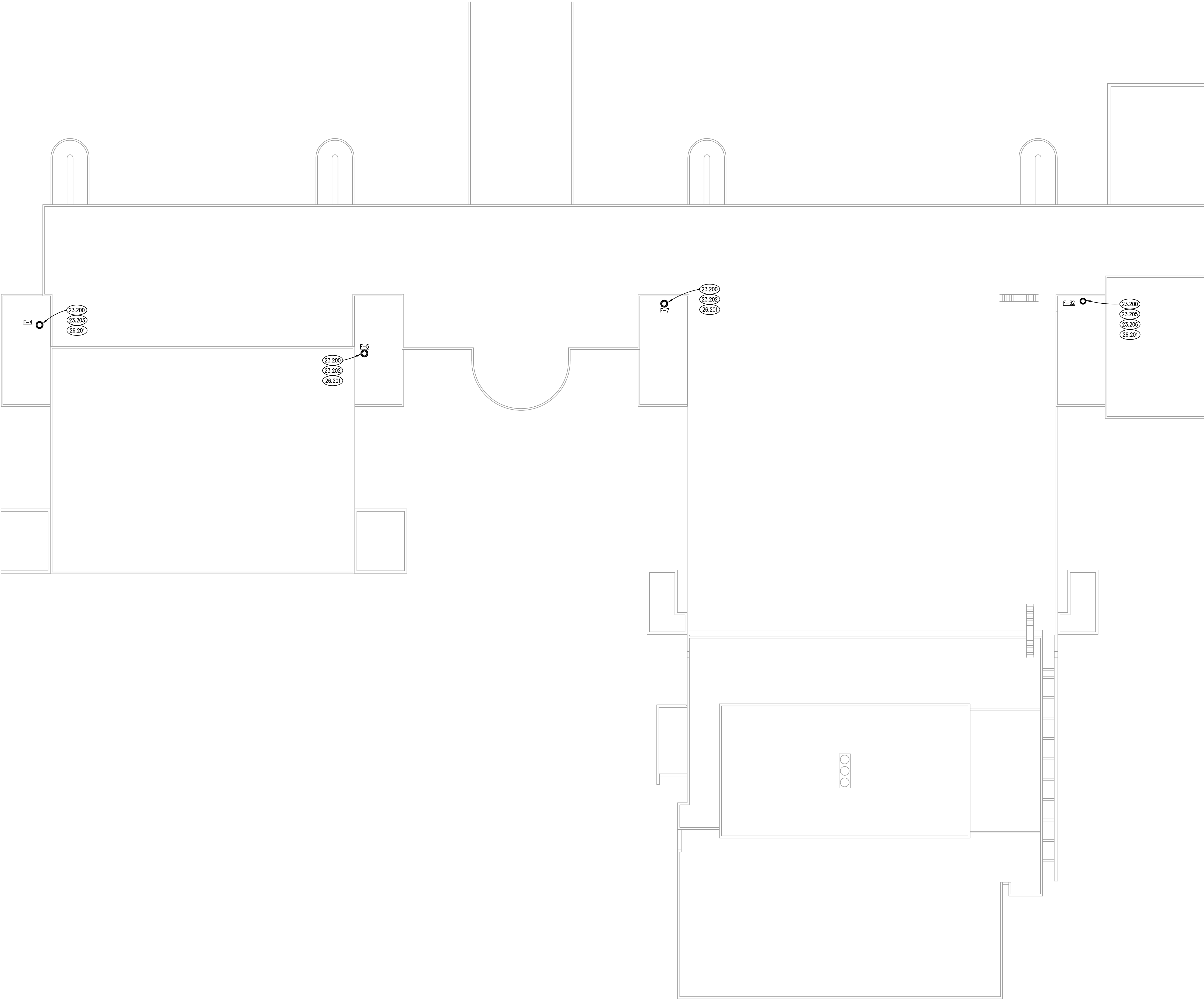


ROOF PLAN - BUILDINGS B, C, D AND S

SCALE: 1/16" = 1'-0"

1

Pl1207 - JAC - Campus Exhaust Fans Replacement30_Design\Design\DD-C2D30_Mech\207ME0352.dwg, 12/20/2018 8:25:40 AM, BWG

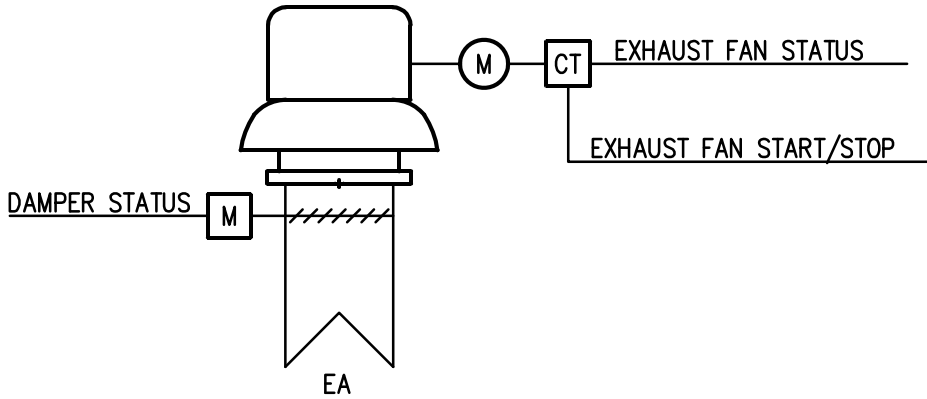


ROOF PLAN - BUILDINGS D, E, F AND G
SCALE: 1/16" = 1'-0"

KEYNOTES

- KEYNOTES ARE TYPICALLY NOT DUPLICATED WITHIN A GIVEN DETAIL. AN UN-KEYNOTED ITEM IN A DETAIL IS THE SAME AS A KEYNOTED ITEM HAVING THE SAME APPEARANCE WITHIN THE SAME DETAIL.
- 23.200 REMOVE OLD EXHAUST FAN AND PROVIDE NEW EXHAUST FAN. PROVIDE ALL MATERIALS AND LABOR AS REQUIRED TO MODIFY CURB TO FIT NEW EXHAUST FAN. PROVIDE ADAPTABLE CURB IF REQUIRED FOR NEW EXHAUST FAN.
- 23.202 APPROXIMATE DIMENSIONS OF EXISTING CURB IS 24" X 24". FIELD VERIFY EXACT DIMENSIONS PRIOR TO CONSTRUCTION.
- 23.203 APPROXIMATE DIMENSIONS OF EXISTING CURB IS 26" X 26". FIELD VERIFY EXACT DIMENSIONS PRIOR TO CONSTRUCTION.
- 23.205 APPROXIMATE DIMENSIONS OF EXISTING CURB IS 25" X 25". FIELD VERIFY EXACT DIMENSIONS PRIOR TO CONSTRUCTION.
- 23.206 TIE NEW FAN INTO THE BUILDING AUTOMATION SYSTEM.
- 26.201 DISCONNECT, PRESERVE, AND PROTECT EXISTING ELECTRICAL CONNECTION TO EXHAUST FAN TO BE REPLACED. RECONNECT EXISTING BRANCH CIRCUITRY AND EXTEND AS NECESSARY TO NEW EQUIPMENT TO ENSURE A COMPLETE AND OPERATIONAL SYSTEM. EXTEND EXISTING BRANCH CIRCUITRY AND PROVIDE ELECTRICAL CONNECTION TO MOTORIZED DAMPERS IN ACCORDANCE WITH MANUFACTURER'S INSTRUCTIONS TO ENSURE A COMPLETE AND OPERATIONAL SYSTEM.

EXHAUST FAN CONTROL SCHEMATIC



POINTS LIST

	HARDWARE				SOFTWARE			
	AI	AO	DI	DO	SCHED	TREND	ALARM	GRAPHIC
EXHAUST FAN								
FAN START/STOP				X	X			X
FAN STATUS			X				X	X
DAMPER STATUS			X				X	X

SEQUENCE OF OPERATIONS

- F-4: THE EXHAUST FAN SHALL BE ENERGIZED BY TIMER.
- F-5: THE EXHAUST FAN SHALL BE ENERGIZED BY TIMER.
- F-7: THE EXHAUST FAN SHALL BE ENERGIZED BY TIMER.
- F-32: THE EXHAUST FAN SHALL BE ENERGIZED AS SCHEDULED IN THE BUILDING AUTOMATION SYSTEM.

FAN SCHEDULE

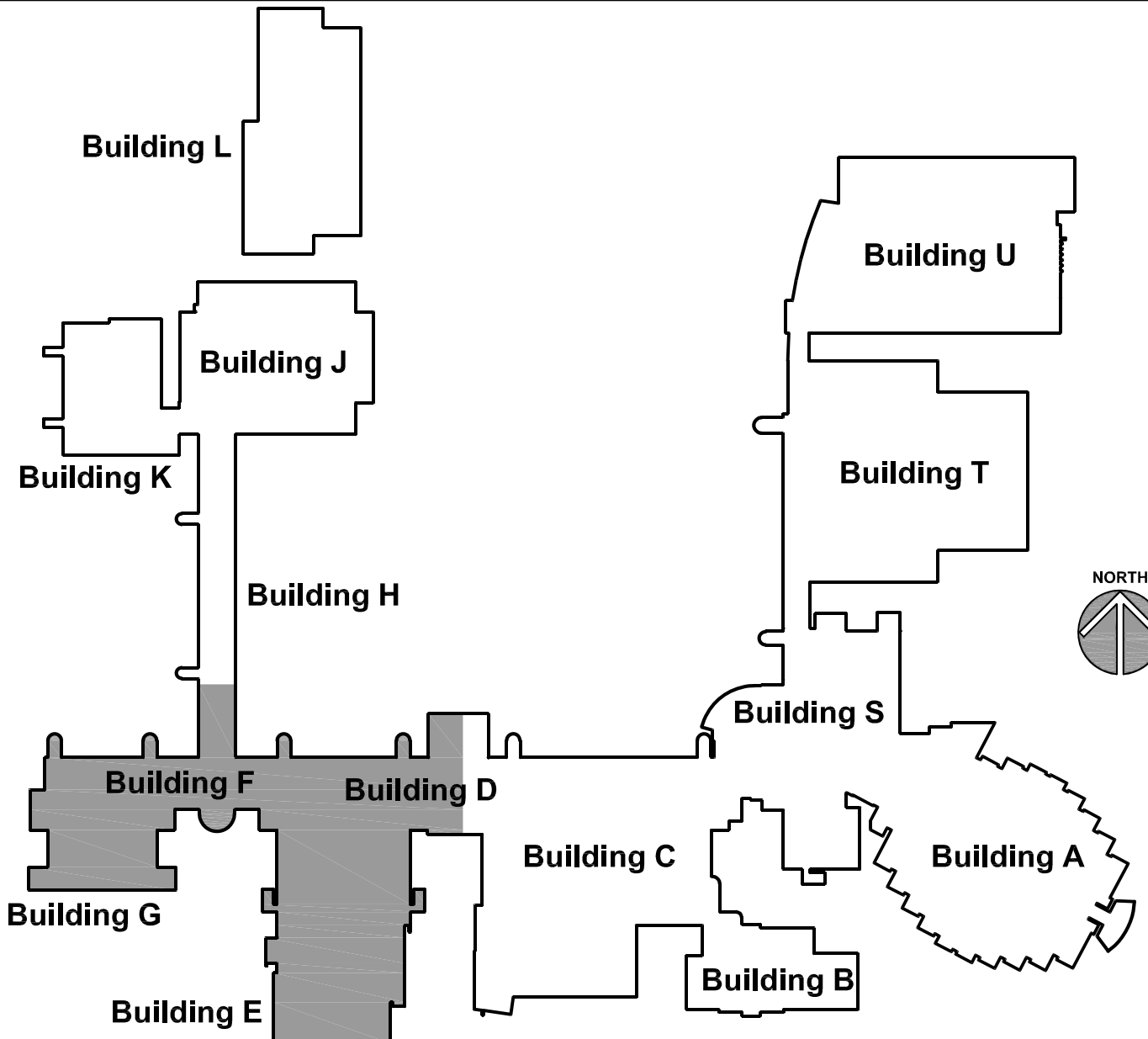
MARK	AIR FLOW RATE (CFM)	EXTERNAL S.P. (IN WG)	TYPE	MOTOR (HP)	ELECTRICAL (V/PH/Hz)	LOCATION	MODEL	NOTES
F-4	2120	0.25	CENTRIFUGAL	1/3	115/1/60	G ROOF	ACED-VF	1, 2
F-5	1925	0.25	CENTRIFUGAL	1/4	115/1/60	F ROOF	ACED-VF	1, 2
F-7	1700	0.75	CENTRIFUGAL	1/3	115/1/60	F ROOF	ACED-VF	1, 2
F-32	1550	0.5	CENTRIFUGAL	1/3	115/1/60	D ROOF	ACED-VF	1, 2

1. MODEL BASED ON COOK.
2. FAN COLOR = WHITE.

GENERAL NOTES

1. REFER TO DRAWING G100 FOR PROJECT GENERAL NOTES.
2. ALL PIPING AND DUCTWORK IS SHOWN DIAGRAMMATICALLY AND DOES NOT SHOW ALL REQUIRED FITTINGS, OFFSETS, DROPS AND RISES. THE CONTRACTOR IS RESPONSIBLE TO PROVIDE ALL MATERIAL AND LABOR FOR A COMPLETE AND WORKING SYSTEM. COORDINATE WITH OTHER TRADES FOR SPACE AVAILABLE AND RELATIVE LOCATIONS OF EQUIPMENT, PIPING, DUCTWORK, ETC.
3. GENERALLY, SMALL DIAMETER PIPE RUNS FROM DRIPS, CONDENSATE PANS AND OTHER SERVICES ARE NOT SHOWN BUT MUST BE PROVIDED.
4. SPACE ALLOCATION, COORDINATION WITH ELECTRICAL, ARCHITECTURAL & OTHER MECHANICAL COMPONENTS HAVE BEEN MADE WITH RESPECT TO ALL EQUIPMENT SCHEDULED ON THESE DRAWINGS AND IN THE SPECIFICATIONS OF THE FIRST NAMED MANUFACTURER ONLY. OTHER MANUFACTURERS ARE ACCEPTABLE PROVIDED THEY MEET PERFORMANCE REQUIREMENTS AND AFOREMENTIONED COORDINATION.
5. OBTAIN AND PAY ALL COSTS FOR PERMITS, LICENSES, CERTIFICATE FILING AND ALL INSPECTIONS BY AUTHORITIES HAVING JURISDICTION.

KEY PLAN



KEYNOTES

KEYNOTES ARE TYPICALLY NOT DUPLICATED WITHIN A GIVEN DETAIL. AN UN-KEYNOTED ITEM IN A DETAIL IS THE SAME AS A KEYNOTED ITEM HAVING THE SAME APPEARANCE WITHIN THE SAME DETAIL.

- 23.200 REMOVE OLD EXHAUST FAN AND PROVIDE NEW EXHAUST FAN. PROVIDE ALL MATERIALS AND LABOR AS REQUIRED TO MODIFY CURB TO FIT NEW EXHAUST FAN. PROVIDE ADAPTABLE CURB IF REQUIRED FOR NEW EXHAUST FAN.
- 23.201 APPROXIMATE DIMENSIONS OF EXISTING CURB IS 20" X 20". FIELD VERIFY EXACT DIMENSIONS PRIOR TO CONSTRUCTION.
- 23.203 APPROXIMATE DIMENSIONS OF EXISTING CURB IS 26" X 26". FIELD VERIFY EXACT DIMENSIONS PRIOR TO CONSTRUCTION.
- 23.204 APPROXIMATE DIMENSIONS OF EXISTING CURB IS 40" X 40". FIELD VERIFY EXACT DIMENSIONS PRIOR TO CONSTRUCTION.
- 26.201 DISCONNECT, PRESERVE, AND PROTECT EXISTING ELECTRICAL CONNECTION TO EXHAUST FAN TO BE REPLACED. RECONNECT EXISTING BRANCH CIRCUITRY AND EXTEND AS NECESSARY TO NEW EQUIPMENT TO ENSURE A COMPLETE AND OPERATIONAL SYSTEM. EXTEND EXISTING BRANCH CIRCUITRY AND PROVIDE ELECTRICAL CONNECTION TO MOTORIZED DAMPERS IN ACCORDANCE WITH MANUFACTURER'S INSTRUCTIONS TO ENSURE A COMPLETE AND OPERATIONAL SYSTEM.
- 26.202 RELOCATE EXISTING PHOTOCELL, MOUNTED ON EXHAUST FAN TO BE REPLACED, AS NECESSARY DURING CONSTRUCTION.

EXHAUST FAN SEQUENCE OF OPERATIONS

- F-2: THE EXHAUST FAN SHALL BE ENERGIZED BY TIMER.
- F-3: THE EXHAUST FAN SHALL BE ENERGIZED BY TIMER.
- F-4: THE EXHAUST FAN SHALL BE ENERGIZED BY TIMER.
- PRE-11: THE EXHAUST FAN SHALL BE ENERGIZED BY TIMER.

FAN SCHEDULE

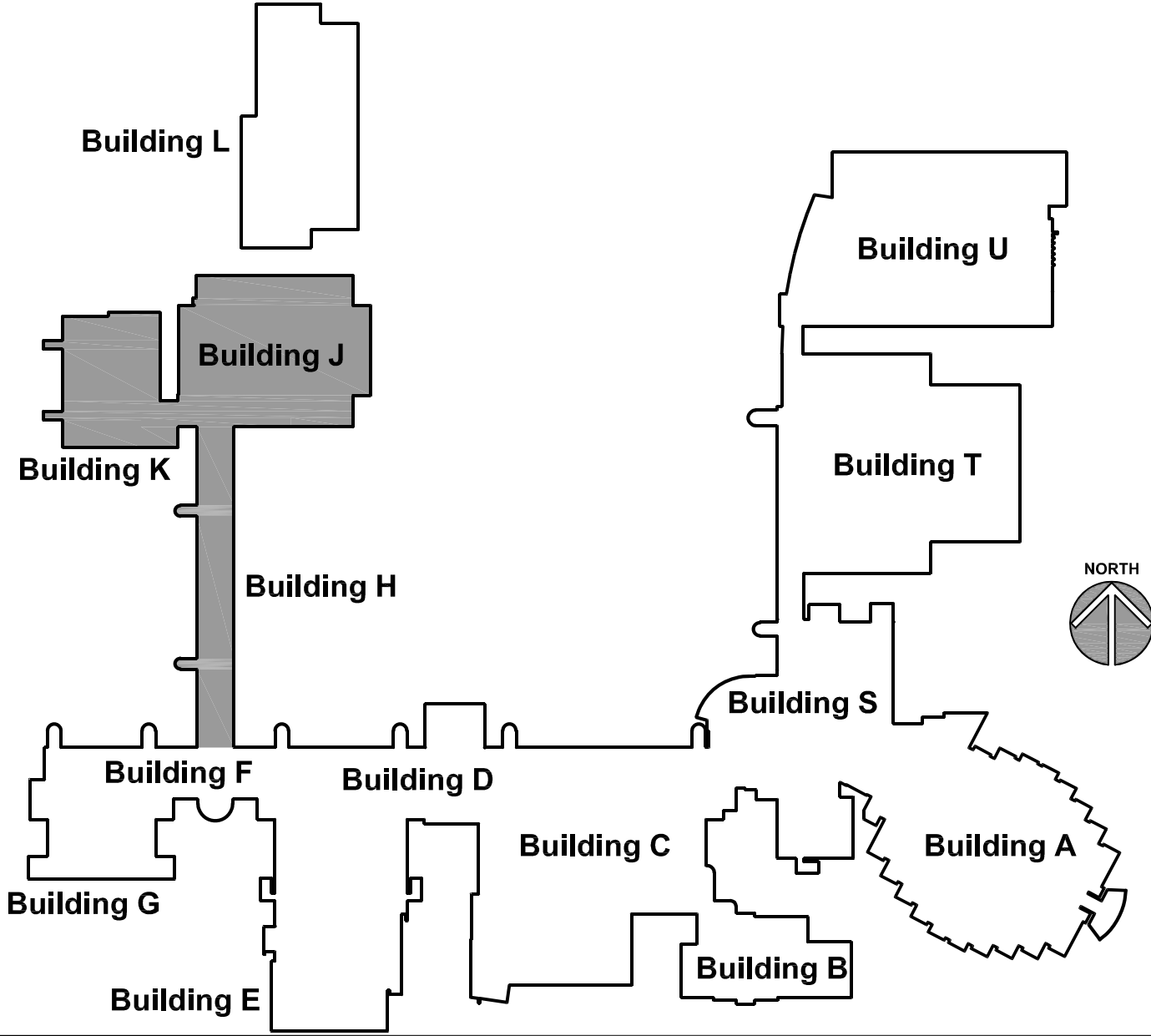
MARK	AIR FLOW RATE (CFM)	EXTERNAL S.P. (IN WG)	TYPE	MOTOR (HP)	ELECTRICAL (V/PH/Hz)	LOCATION	MODEL	NOTES
F-2	250	0.15	CENTRIFUGAL	1/6	115/1/60	H ROOF	ACED-EC	1, 2
F-3	250	0.15	CENTRIFUGAL	1/6	115/1/60	H ROOF	ACED-EC	1, 2
F-4	5000	0.3	CENTRIFUGAL	2.0	460/3/60	J ROOF	ACED-VF	1, 2
PRE-11	1250	0.375	CENTRIFUGAL	1/3	115/1/60	K ROOF	ACED-VF	1, 2

- NOTES
1. MODEL BASED ON COOK.
2. FAN COLOR = WHITE.

GENERAL NOTES

1. REFER TO DRAWING G100 FOR PROJECT GENERAL NOTES.
2. ALL PIPING AND DUCTWORK IS SHOWN DIAGRAMMATICALLY AND DOES NOT SHOW ALL REQUIRED FITTINGS, OFFSETS, DROPS AND RISES. THE CONTRACTOR IS RESPONSIBLE TO PROVIDE ALL MATERIAL AND LABOR FOR A COMPLETE AND WORKING SYSTEM. COORDINATE WITH OTHER TRADES FOR SPACE AVAILABLE AND RELATIVE LOCATIONS OF EQUIPMENT, PIPING, DUCTWORK, ETC.
3. GENERALLY, SMALL DIAMETER PIPE RUNS FROM DRIPS, CONDENSATE PANS AND OTHER SERVICES ARE NOT SHOWN BUT MUST BE PROVIDED.
4. SPACE ALLOCATION, COORDINATION WITH ELECTRICAL, ARCHITECTURAL & OTHER MECHANICAL COMPONENTS HAVE BEEN MADE WITH RESPECT TO ALL EQUIPMENT SCHEDULED ON THESE DRAWINGS AND IN THE SPECIFICATIONS OF THE FIRST NAMED MANUFACTURER ONLY. OTHER MANUFACTURERS ARE ACCEPTABLE PROVIDED THEY MEET PERFORMANCE REQUIREMENTS AND AFOREMENTIONED COORDINATION.
5. OBTAIN AND PAY ALL COSTS FOR PERMITS, LICENSES, CERTIFICATE FILING AND ALL INSPECTIONS BY AUTHORITIES HAVING JURISDICTION.

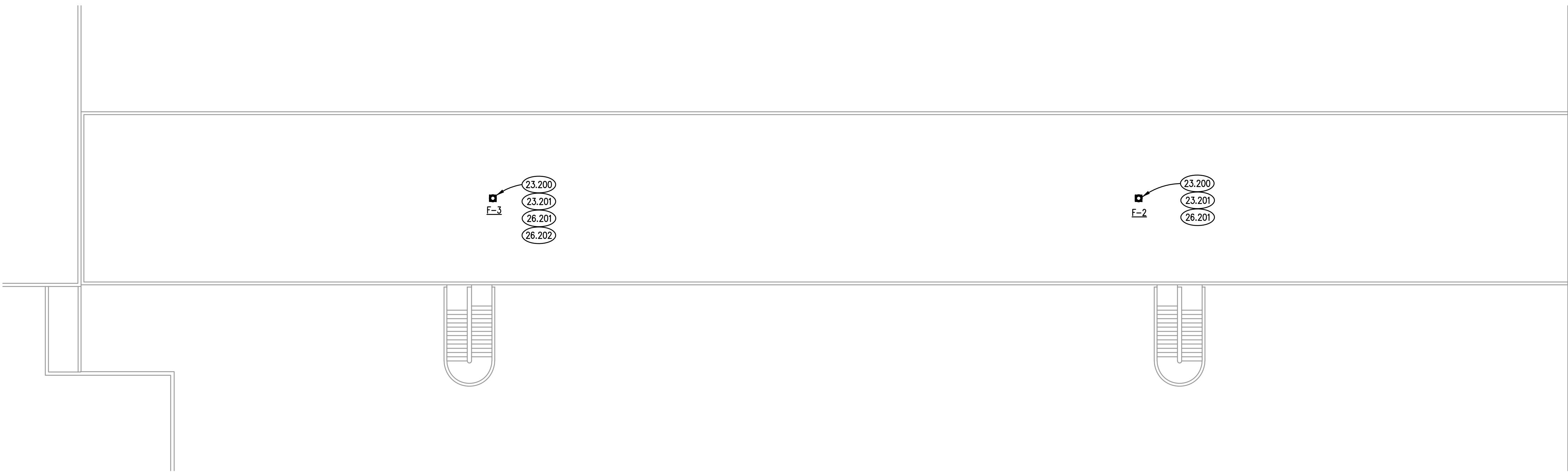
KEY PLAN



ROOF PLAN - BUILDINGS H

1

SCALE: 1/16" = 1'-0"



ROOF PLAN - BUILDINGS H, J AND K

2

SCALE: 1/16" = 1'-0"

