

GENERAL NOTES

ALL CONSTRUCTION SHALL BE IN ACCORDANCE WITH THE REQUIREMENTS SET FORTH BY 2009 IBC AND SHALL CONFORM TO ALL OTHER APPLICABLE MUNICIPAL, STATE, AND FEDERAL REGULATIONS INCLUDING THE ILLINOIS ACCESSIBILITY CODE (1997) AND THE AMERICANS WITH DISABILITIES ACT.

B: MISCELLANEOUS AND DEMOLITION NOTES

- 1. ALL CONTRACTORS ARE REQUIRED TO VISIT THE SITE AND BE KNOWLEDGEABLE REGARDING EXISTING CONDITIONS AND THEIR EFFECT ON THE PROPOSED WORK. CONTRACTORS SHALL VERIFY AND BE RESPONSIBLE FOR ANY CONDITIONS REQUIRING MODIFICATION BEFORE PROCEEDING WITH THE PROJECT.
2. NOTIFY THE OWNER'S REPRESENTATIVE A MINIMUM OF 72 HOURS PRIOR TO THE INTERRUPTION OF ANY UTILITY.
3. CONTRACTORS AND SUBCONTRACTORS SHALL COORDINATE THEIR WORK WITH THAT OF OTHER TRADES.
4. NO WORK WILL BE PERMITTED TO BE INSTALLED WITHOUT RECEIPT AND SUBSEQUENT REVIEW OF FULL AND COMPLETE SUBMITTALS BY THE ARCHITECT/ENGINEER.
5. DO NOT SCALE DRAWINGS, DIMENSIONS INDICATED TAKE PRECEDENCE OVER SCALE.
6. VERIFY ALL DIMENSIONS AND ELEVATIONS IN THE FIELD, WHERE DISCREPANCIES ARE FOUND BETWEEN DIMENSIONS OR ELEVATIONS SHOWN AND ACTUAL FIELD CONDITIONS, NOTIFY ARCHITECT/ENGINEER.
7. DEFINITIONS:
7.1. FURNISH: SUPPLY, DELIVER TO AND UNLOAD AT PROJECT SITE READY FOR ASSEMBLY AND INCORPORATION INTO THE WORK.
7.2. INSTALL: AT THE PROJECT SITE, UNPACK/UNCRATE ASSEMBLE, PLACE, ANCHOR, FINISH, PROTECT, CLEAN, AND PERFORM ALL OTHER SIMILAR OPERATIONS REQUIRED TO FULLY AND PROPERLY INCORPORATE AN ITEM INTO THE WORK. LEGALLY DISPOSE OF OR RECYCLE PACKAGING AND EXTRA MATERIAL OFF-SITE.
7.3. PROJECT SITE: THE SPACE AVAILABLE TO THE CONTRACTOR FOR PERFORMANCE OF CONSTRUCTION ACTIVITIES. THE EXTENT OF THE PROJECT SITE IS THE AREAS TO BE REMODELED AS INDICATED ON THE DRAWINGS, AND EXTENDS TO SUCH AREAS AS CONTAIN TERMINATIONS FOR POWER, DATA AND OTHER SERVICES.
7.4. OFF-SITE: OUTSIDE THE PROPERTY IN WHICH THE PROJECT SITE IS LOCATED.
7.5. PROVIDE: FURNISH AND INSTALL, AS DEFINED ABOVE.
8. WHERE CONFLICTS MAY EXIST BETWEEN THE REQUIREMENTS OF PORTIONS OF THE CONTRACT DOCUMENTS, THE GREATER QUANTITY, HIGHER QUALITY OR MORE STRINGENT REQUIREMENT SHALL GOVERN. THEREFORE, BY EXECUTING A CONTRACT FOR CONSTRUCTION, THE CONTRACTOR AGREES THAT, IF IT RAISED NO QUESTIONS REGARDING SUCH CONFLICTS DURING THE BIDDING PROCESS, AND IN THE ABSENCE OF A CLARIFYING ADDENDUM ISSUED DURING THE BIDDING PROCESS, IT HAS VOLUNTEERED TO COMPLY WITH THE MORE EXPENSIVE REQUIREMENT AS PART OF ITS BASE BID AND IS NOT ENTITLED TO ANY ADDITIONAL COMPENSATION TO RESOLVE THE CONFLICT.
9. THE CONTRACT DOCUMENTS REQUIRE THE CONTRACTOR TO FURNISH AND INSTALL COMPLETE PRODUCTS, SYSTEMS AND SERVICES. BY EXECUTING A CONTRACT FOR CONSTRUCTION, THE CONTRACTOR AGREES THAT THE DRAWINGS SET FORTH THE DESIGN INTENT AND, THEREFORE, MAY NOT EXPRESSLY DEPICT EVERY LENGTH, SEGMENT, PIECE, PART, COMPONENT OR UNIT OF A PRODUCT, SYSTEM OR SERVICE. THE CONTRACTOR FURTHER AGREES THAT, AS PART OF ITS BID, IT MUST FURNISH AND INSTALL EVERY LENGTH, SEGMENT, PIECE, PART, COMPONENT OR UNIT OF A PRODUCT, SYSTEM OR SERVICE AND, CONSEQUENTLY, THE CONTRACTOR IS NOT ENTITLED TO ANY ADDITIONAL COMPENSATION FOR ANY LENGTH, SEGMENT, PIECE, PART COMPONENT OR UNIT OF A PRODUCT, SYSTEM OR SERVICE BECAUSE IT IS NOT EXPRESSLY DEPICTED HEREIN.
10. ARCHITECT SHALL BE NAMED AS ADDITIONAL INSURED ON ALL REQUIRED INSURANCE POLICIES.

- 1. DEFINITIONS:
1.1. DEMOLISH: DISCONNECT FROM SERVICES, UNFASTEN, REMOVE, DISASSEMBLE AND LEGALLY DISPOSE OF OR RECYCLE OFF-SITE.
1.2. SALVAGE: CAREFULLY, SO AS TO PRESERVE INTEGRITY AND USEFULNESS, DISCONNECT FROM SERVICES, UNFASTEN, REMOVE, DISASSEMBLE IF NECESSARY, AND STORE TEMPORARILY FOR REINCORPORATION INTO THE WORK OR FOR DELIVERY/TURN-OVER TO THE OWNER AS INDICATED IN THE CONSTRUCTION DOCUMENTS.
1.3. SALVAGE IN PLACE: PROTECT, RE-USE, CLEAN, RE-CONDITION IF NECESSARY, REFINISH IF INDICATED IN THE DRAWINGS, EXISTING INSTALLED ITEM/COMPONENT WITHOUT DISCONNECTING, UNFASTENING OR REMOVING FROM THE WORK.
2. BRING ANY UNFORESEEN OR CONFLICTING CONDITIONS TO THE IMMEDIATE ATTENTION OF THE ARCHITECT/ENGINEER BEFORE PROCEEDING WITH THE WORK.
3. REPAIR, PATCH, OR REPLACE FINISH MATERIALS OR VISIBLE ASSEMBLIES THAT ARE SOILED, CUT OR DAMAGED IN ANY FASHION DURING THE COURSE OF THE WORK. PERFORM PATCHING SUCH THAT EDGES BLEND INTO CONTIGUOUS SURFACES SMOOTHLY, MATCHING TEXTURE AND COLOR OF ADJACENT SURFACES.
4. SEAL PENETRATIONS OF DUCTWORK, CONDUIT OR PIPES WITH UL APPROVED MATERIALS TO MAINTAIN THE FIRE RATING OF ASSEMBLIES.
5. APPLY APPROPRIATE & COMPATIBLE SEALANT MATERIALS AS REQUIRED TO SEPARATE DISSIMILAR METALS, FILL GAPS IN EXISTING ASSEMBLIES OR WHERE NEW AND EXISTING ASSEMBLIES MEET OR WHERE OTHERWISE REQUIRED BY THE SPECIFICATIONS.
6. UNTIL PERMANENT LIGHTING IS IN PLACE AND ENERGIZED, PROVIDE AND MAINTAIN TEMPORARY LIGHTING IN THE PROJECT AREAS, TO ACHIEVE A MINIMUM LIGHTING LEVEL OF 2 WATTS PER S.F.
7. OWNER WILL CONTINUE TO OCCUPY AREAS ADJACENT TO THE PROJECT AREAS DURING THE CONSTRUCTION PERIOD. COORDINATE WITH OWNER TO MINIMIZE CONFLICT AND TO FACILITATE OWNER'S OPERATIONS. LIMIT CONDUCT OF ESPECIALLY NOISY OR DISRUPTIVE WORK TO ONLY THOSE TIMES MUTUALLY AGREED TO BY OWNER. REQUEST MUTUALLY AGREEABLE TIME FROM OWNER PRIOR TO CONDUCTING SUCH WORK, AND PROCEED WITH SUCH WORK ONLY AFTER RECEIVING OWNER'S EXPRESS PERMISSION TO DO SO.

C: BIDDING NOTES

- 1. GENERAL CONTRACTOR TO PROVIDE A \$5,000 ALLOWANCE IN HIS/HER BID FOR UNFORESEEN/MISCELLANEOUS CONDITIONS. WHEN FIGURING THIS ALLOWANCE IN THE BID, CONTRACTOR IS TO INCLUDE ALL NECESSARY OVERHEAD AND PROFIT. THIS ALLOWANCE IS NOT FOR THE CONTRACTOR'S BENEFIT, AND IS ONLY AUTHORIZED TO CHARGE AGAINST THIS ALLOWANCE WHEN DIRECTED AND APPROVED BY JOLIET JUNIOR COLLEGE. THE CONTRACTOR WILL BE ALLOWED TO INVOICE FOR MATERIAL AND RAW LABOR COST ONLY.
2. CONSTRUCTION SCHEDULE: CONSTRUCTION START AND SUBSTANTIAL COMPLETION IN ACCORDANCE WITH JJC FRONT-END DOCUMENTS.
3. ALL LOUD AND DISRUPTIVE WORK IS TO BE PERFORMED BETWEEN THE HOURS OF 10:00 PM AND 6:00 AM.

STANDARD ABBREVIATIONS

Table with 4 columns of abbreviations and their corresponding full names. Includes categories like AT (Anchor Bolt), EXP (Expansion), PL (Plate), and many others.

THE MATERIALS, ABBREVIATIONS, AND DRAFTING SYMBOLS LEGEND ARE EACH AN ALL INCLUSIVE MASTER LIST USED BY THIS FIRM. THE INCLUSION OF THESE LEGENDS INTO THESE DOCUMENTS DOES NOT IMPLY THAT ALL THE SYMBOLS OR MATERIALS INCLUDED IN THESE LEGENDS ARE INCORPORATED INTO THIS PROJECT.

DRAFTING SYMBOLS AND MATERIALS LEGEND

Table showing drafting symbols for various materials and conditions. Includes symbols for concrete, brick masonry, stone masonry, steel, wood, insulation, gypsum board, and earth backfill.



PROJECT

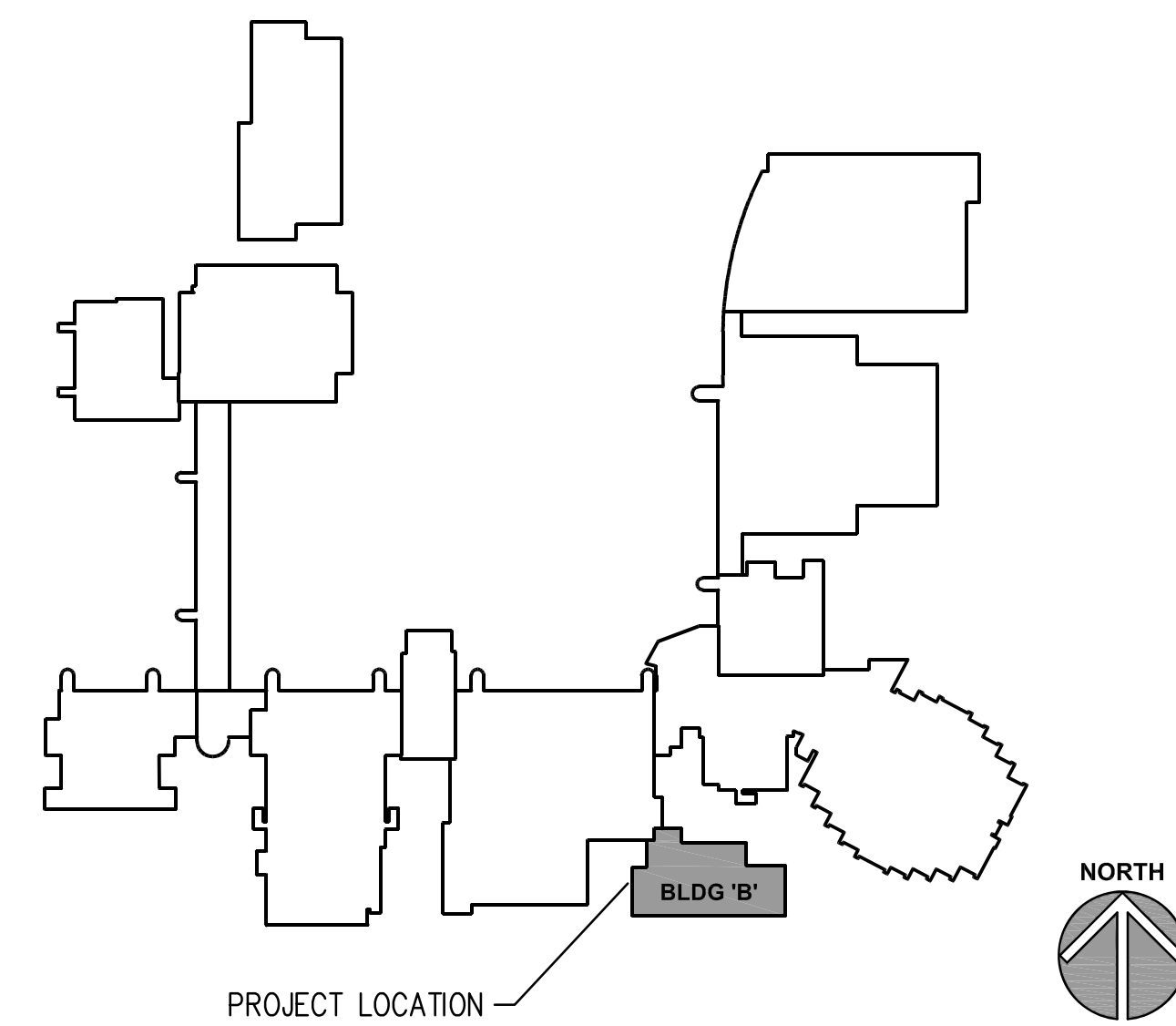
WELDING LAB DUST COLLECTOR REPLACEMENT
JOLIET JUNIOR COLLEGE
1215 HOUBOLT ROAD
JOLIET, IL 60431

OWNER

JOLIET JUNIOR COLLEGE
1215 HOUBOLT ROAD
JOLIET, IL 60431

ARCHITECT/ENGINEER

KLUBER ARCHITECTS + ENGINEERS
10 S. SHUMWAY AVE.
BATAVIA, ILLINOIS 60510
TEL 630-406-1213
FAX 630-406-9472
www.kluberinc.com



SEALS & CERTIFICATES

I HAVE PREPARED, OR CAUSED TO BE PREPARED UNDER MY DIRECT SUPERVISION, THE ATTACHED PLANS AND SPECIFICATIONS AND STATE THAT TO THE BEST OF MY KNOWLEDGE AND BELIEF, AND TO THE EXTENT OF MY CONTRACTUAL OBLIGATION, THEY ARE IN COMPLIANCE WITH IBC 2009 EDITION, THE ENVIRONMENTAL BARRIERS ACT AND THE ILLINOIS ACCESSIBILITY CODE.

MECHANICAL ENGINEER'S SEAL box

ELECTRICAL ENGINEER'S SEAL box

"G" SERIES
"M" SERIES

"G" SERIES
"ME" SERIES

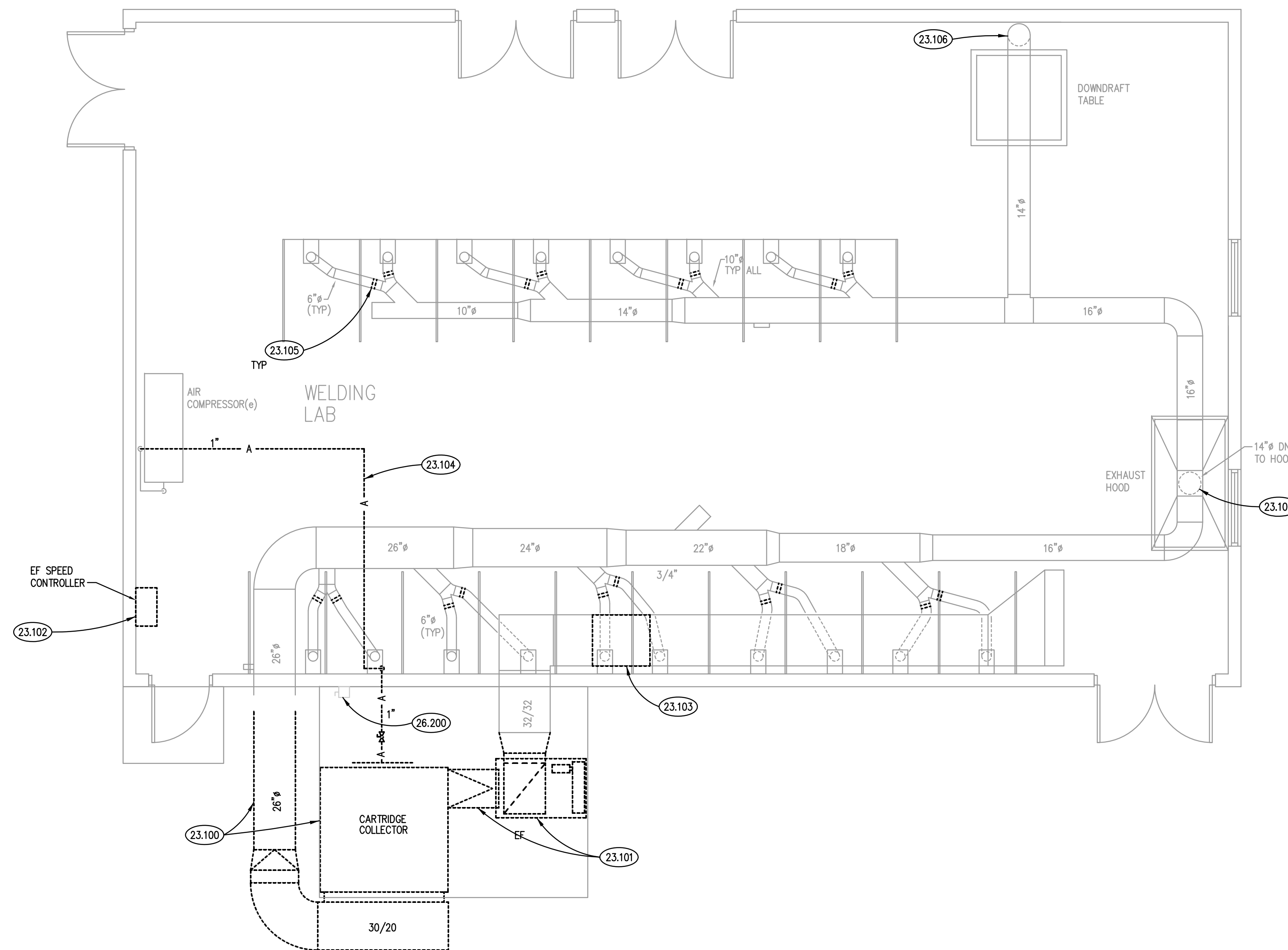
INDEX OF DRAWINGS

Table listing drawing titles and sheet numbers: G100 COVER SHEET, GENERAL NOTES, SYMBOLS, & DRAWING INDEX; ME310 WELDING LAB MECHANICAL PLAN; M410 MECHANICAL DETAILS.

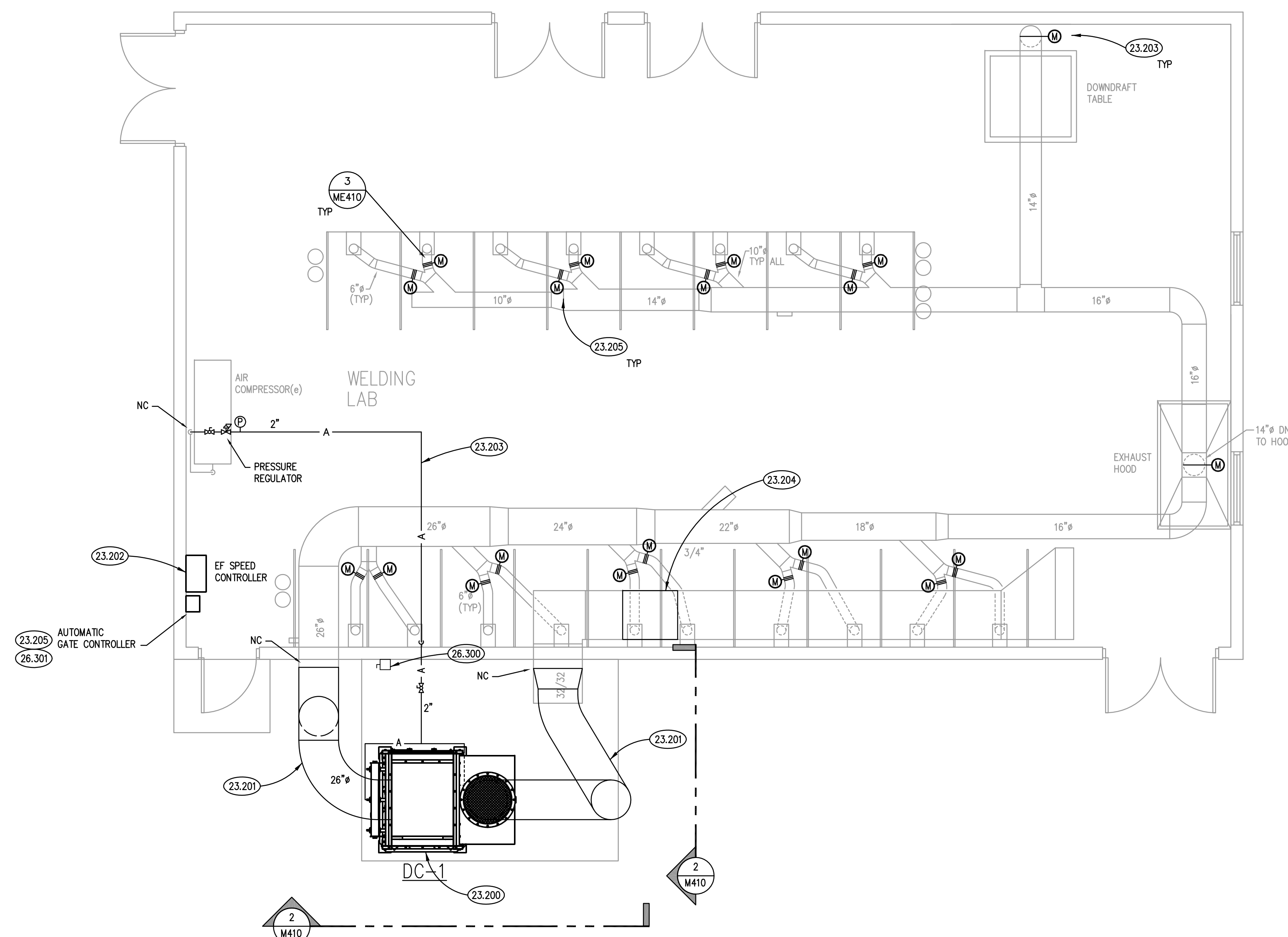
BUILDING CODE DATA

- 2009 INTERNATIONAL BUILDING CODE
2014 ILLINOIS STATE PLUMBING CODE
2009 INTERNATIONAL MECHANICAL CODE
2009 INTERNATIONAL FUEL AND GAS CODE
2015 INTERNATIONAL ENERGY CODE
2009 INTERNATIONAL FIRE PREVENTION CODE
1997 IL ACCESSIBILITY CODE
2011 NATIONAL ELECTRIC CODE
LOCAL AMENDMENTS TO THE ABOVE CODES

Vertical sidebar containing Kluber Architects + Engineers logo, contact information, project title 'WELDING LAB DUST COLLECTOR REPLACEMENT', and sheet number 'G100'.



MECHANICAL AND ELECTRICAL DEMOLITION FLOOR PLAN 1
SCALE: 1/4" = 1'-0"



MECHANICAL AND ELECTRICAL FLOOR PLAN 2
SCALE: 1/4" = 1'-0"

KEYNOTES

KEYNOTES ARE NOT ALWAYS REPEATED ACROSS ALL DRAWINGS ON THIS SHEET. AN UN-KEYNOTED ITEM ON THIS SHEET IS THE SAME AS A KEYNOTED ITEM ON THIS SHEET HAVING THE SAME GRAPHIC APPEARANCE.

- 23.100 REMOVE BAG HOUSE AND ALL ASSOCIATED DUCTWORK AS SHOWN.
- 23.101 REMOVE EXHAUST FAN AND ALL ASSOCIATED DUCTWORK AS SHOWN.
- 23.102 REMOVE EXHAUST FAN SPEED CONTROLLER AND CONTROL DEVICES.
- 23.103 REMOVE SECTION OF DUCTWORK FOR INSTALLATION OF SILENCER.
- 23.104 REMOVE COMPRESSED AIR FROM BAG HOUSE BACK TO AIR COMPRESSOR. PROVIDE TEMPORARY CAP TO NEW CONNECTION.
- 23.105 ALTERNATE NO. 1 - REMOVE SECTION OF 6" ROUND DUCTWORK TO ALLOW FOR INSTALLATION OF AUTOMATIC GATES.
- 23.106 ALTERNATE NO. 1 - REMOVE EXISTING GATE IN 14" ROUND DUCTWORK TO ALLOW FOR INSTALLATION OF AUTOMATIC GATE.
- 23.200 PROVIDE NEW DUST COLLECTOR. PROVIDE CONNECTION TO EXISTING DUCTWORK INTO AND OUT OF BUILDING.
- 23.201 PROVIDE INSULATION AND ALUMINUM JACKET ON EXTERIOR DUCTWORK.
- 23.202 PROVIDE DUST COLLECTOR SPEED CONTROLLER AND ALL REQUIRED COMPONENT FOR A COMPLETE AND OPERATIONAL SYSTEM.
- 23.203 PROVIDE NEW AIR SUPPLY FROM EXISTING AIR COMPRESSOR TO DUST COLLECTOR.
- 23.204 PROVIDE SILENCER IN EXISTING RETURN AIR DUCT.
- 23.205 ALTERNATE NO. 1 - PROVIDE AUTOMATIC GATE CONTROLLER, GATE WITH CONTROLLER, ALL ELECTRICAL CONNECTIONS AND INTERFACE TO DUST COLLECTOR SPEED CONTROLLER. COORDINATE WITH OWNER ON EXACT LOCATIONS FOR TYPE OF ACTIVATION OF GATE (TIMER/CURRENT SENSOR).
- 26.200 DEMOLISH EXISTING ELECTRICAL CONNECTION TO DUST COLLECTOR TO BE REMOVED. REMOVE EXISTING DISCONNECT AND ASSOCIATED BRANCH CIRCUITRY TO SOURCE. DEMOLISH EXISTING 45 AMPERE, 3 POLE CIRCUIT BREAKER FROM PANEL MDP (LOCATED IN NEARBY MEZZANINE).
- 26.300 PROVIDE ELECTRICAL CONNECTION TO NEW DUST COLLECTOR: HOMERUN 3/8"Ø, 1"Ø TO NEW 90 AMPERE, 3 POLE CIRCUIT BREAKER IN PANEL MDP (LOCATED IN NEARBY EQUIPMENT MEZZANINE, IN STORAGE ROOM B1002 50' NORTH OF WELDING LAB). PROVIDE WALL MOUNTED NON-FUSED DISCONNECT SWITCH (100/3Ø/3).
- 26.301 ALTERNATE NO. 1 - PROVIDE ELECTRICAL CONNECTION FOR AUTOMATIC GATE CONTROLLER. PROVIDE SINGLE DEDICATED 20AMPERE, 120 VOLT CIRCUIT FROM NEARBY PANELBOARD.

GENERAL NOTES

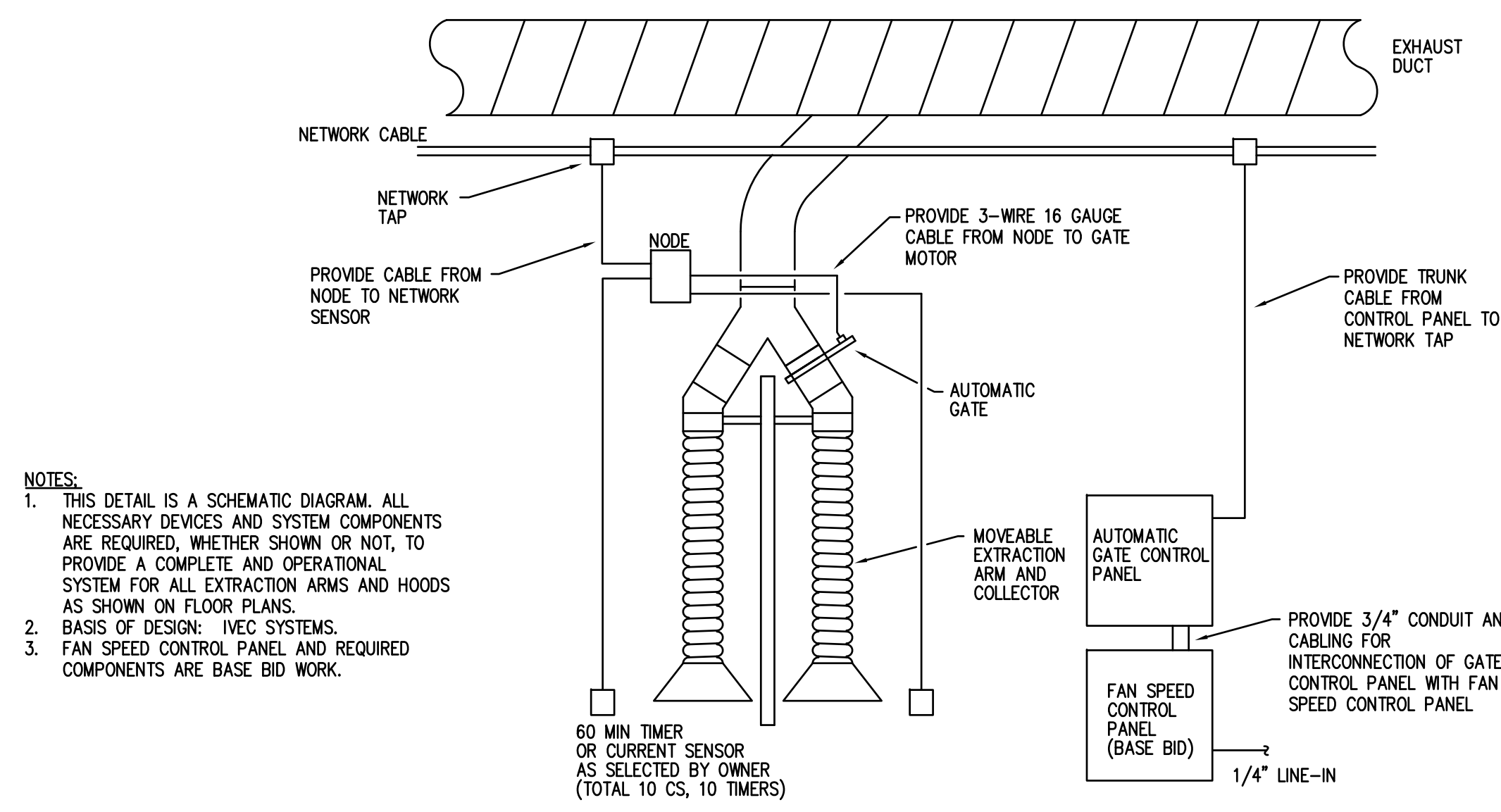
1. REFER TO DRAWING G100 FOR PROJECT GENERAL NOTES.
2. ALL PIPING AND DUCTWORK IS SHOWN DIAGRAMMATICALLY AND DOES NOT SHOW ALL REQUIRED FITTINGS, OFFSETS, DROPS AND RISERS. THE CONTRACTOR IS RESPONSIBLE TO PROVIDE ALL MATERIAL AND LABOR FOR A COMPLETE AND WORKING SYSTEM. COORDINATE WITH OTHER TRADES FOR SPACE AVAILABLE AND RELATIVE LOCATIONS OF EQUIPMENT, PIPING, DUCTWORK, ETC.
3. ALL TAPES AND MASTICS USED TO SEAL DUCTWORK LISTED AND LABELED IN ACCORDANCE WITH UL 181A SHALL BE MARKED ACCORDINGLY. ALL TAPES AND MASTICS USED TO SEAL FLEXIBLE DUCTS AND AIR CONNECTORS SHALL COMPLY WITH UL 181B AND MARKED ACCORDINGLY.
4. DO NOT CUT THROUGH THE MASONRY BOND BEAMS OR OTHER STRUCTURAL ELEMENT WHEN INSTALLING OPENINGS REQUIRED FOR ALL DUCTWORK, PIPING, CONDUITS OR OTHER WORK. CONTRACTOR CUTTING THROUGH OR OTHERWISE DAMAGING THESE ELEMENTS WILL BE RESPONSIBLE FOR ALL ASSOCIATED ENGINEERING FEES AND SUBSEQUENT RETRO-FIT/REINFORCING DEEMED NECESSARY TO REINSTATE THE CONTINUITY OF THE DISRUPTED ELEMENTS.
5. OBTAIN AND PAY ALL COSTS FOR PERMITS, LICENSES, CERTIFICATE FILING AND ALL INSPECTIONS BY AUTHORITIES HAVING JURISDICTION.

ISSUED	
1/11/17	BID DOCUMENTS

JOB NO.	17-292-1142
DRAWN	DDW/ATR
CHECKED	DDW/MTK
APPROVED	DDW

SHEET TITLE	MECHANICAL AND ELECTRICAL FLOOR PLAN
SHEET NUMBER	

P:\1142 - Joliet Junior College - Welding Lab Dust Collector Replacement\3D_Design\DWG\DC-CDD0_Mech1_M2ME310.dwg, 1/11/2017 3:21:05 PM, 05w

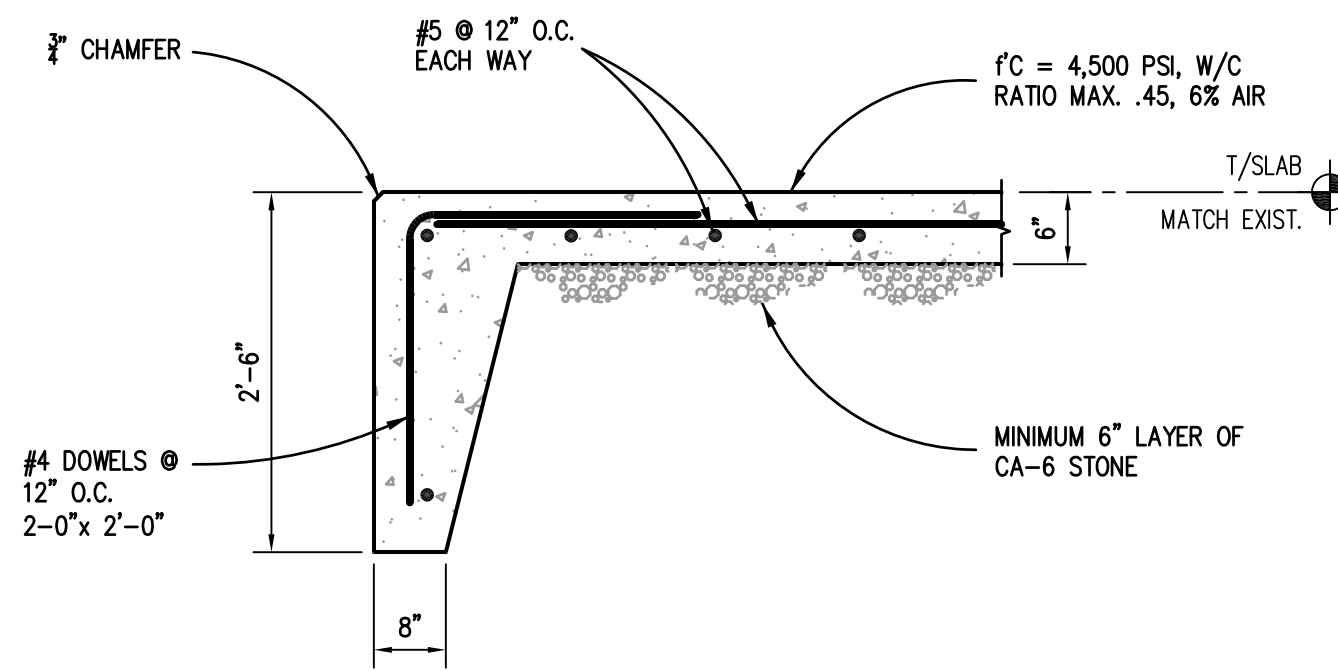


- NOTES:**
- THIS DETAIL IS A SCHEMATIC DIAGRAM. ALL NECESSARY DEVICES AND SYSTEM COMPONENTS ARE REQUIRED, WHETHER SHOWN OR NOT, TO PROVIDE A COMPLETE AND OPERATIONAL SYSTEM FOR ALL EXTRACTION ARMS AND HOODS AS SHOWN ON FLOOR PLANS.
 - BASIS OF DESIGN: VEC SYSTEMS
 - FAN SPEED CONTROL PANEL AND REQUIRED COMPONENTS ARE BASE BID WORK.

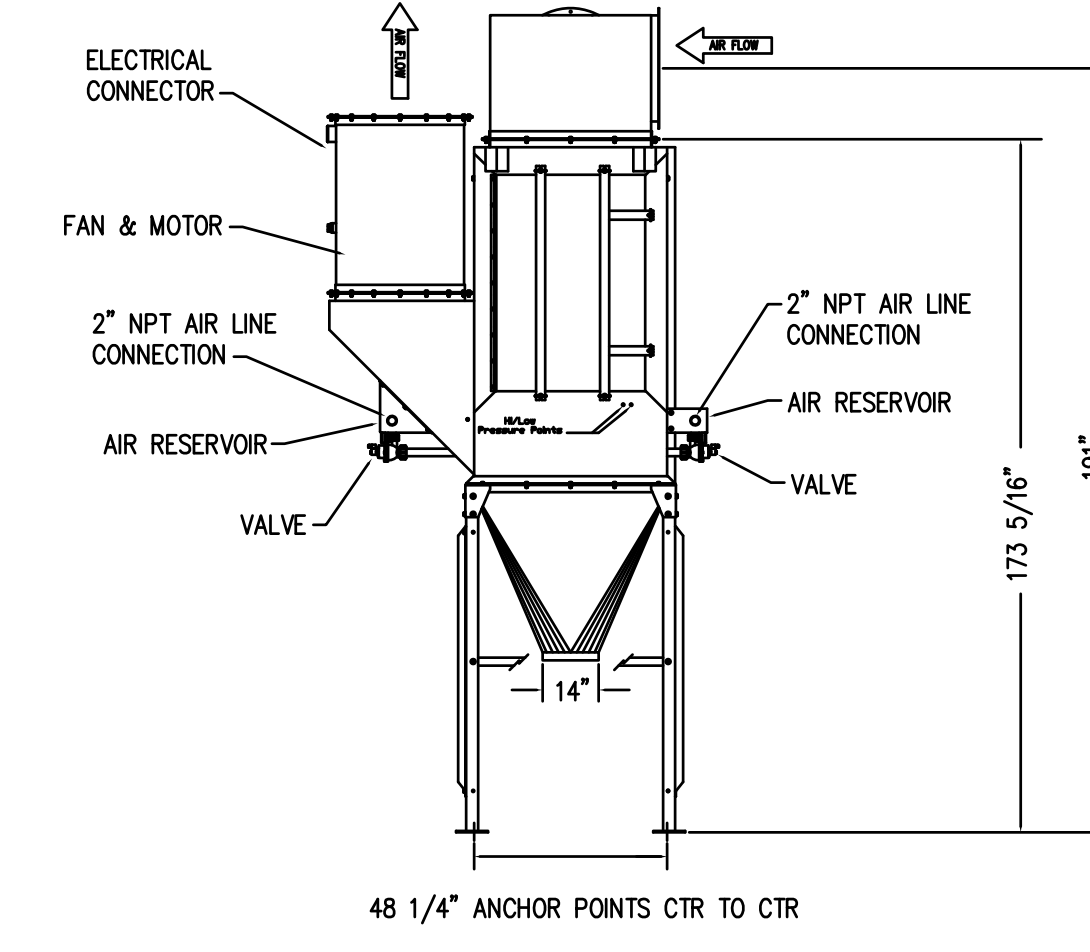
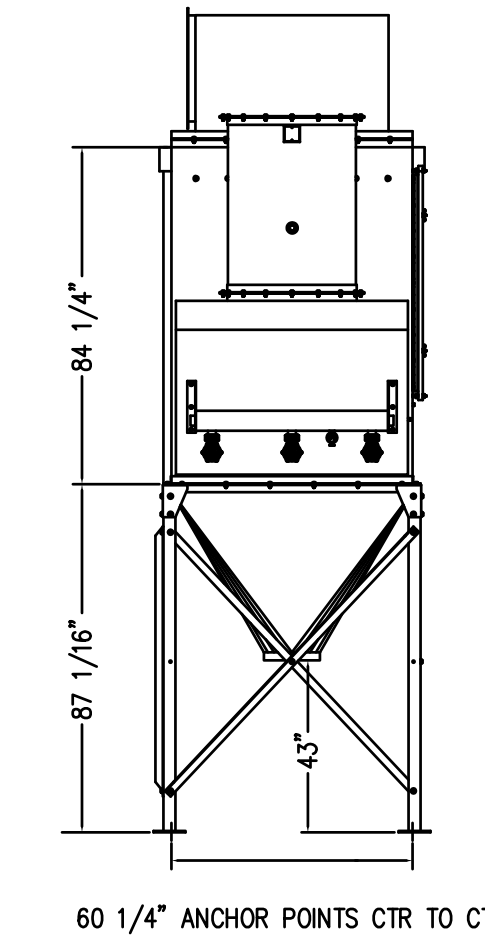
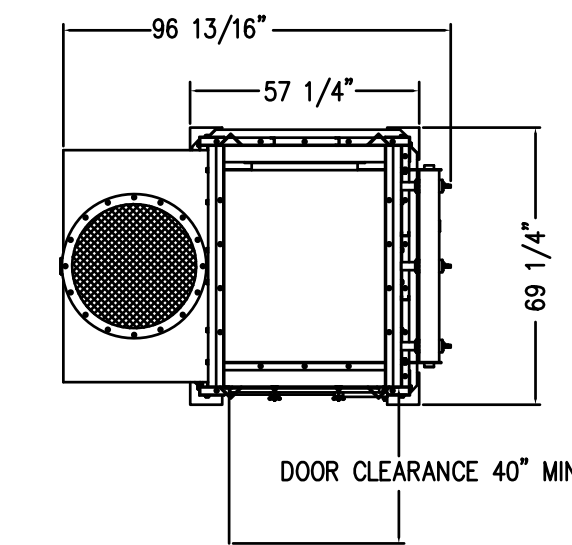
60 MIN TIMER OR CURRENT SENSOR AS SELECTED BY OWNER (TOTAL TO CS, TO TIMERS)
 PROVIDE TRUNK CABLE FROM CONTROL PANEL TO NETWORK TAP
 PROVIDE 3/4" CONDUIT AND CABLING FOR INTERCONNECTION OF GATE CONTROL PANEL WITH FAN SPEED CONTROL PANEL
 1/4" LINE-IN

ALT NO. 1: WELDING BOOTH AUTOMATIC GATE CONTROL DETAIL 3
 SCALE: NTS

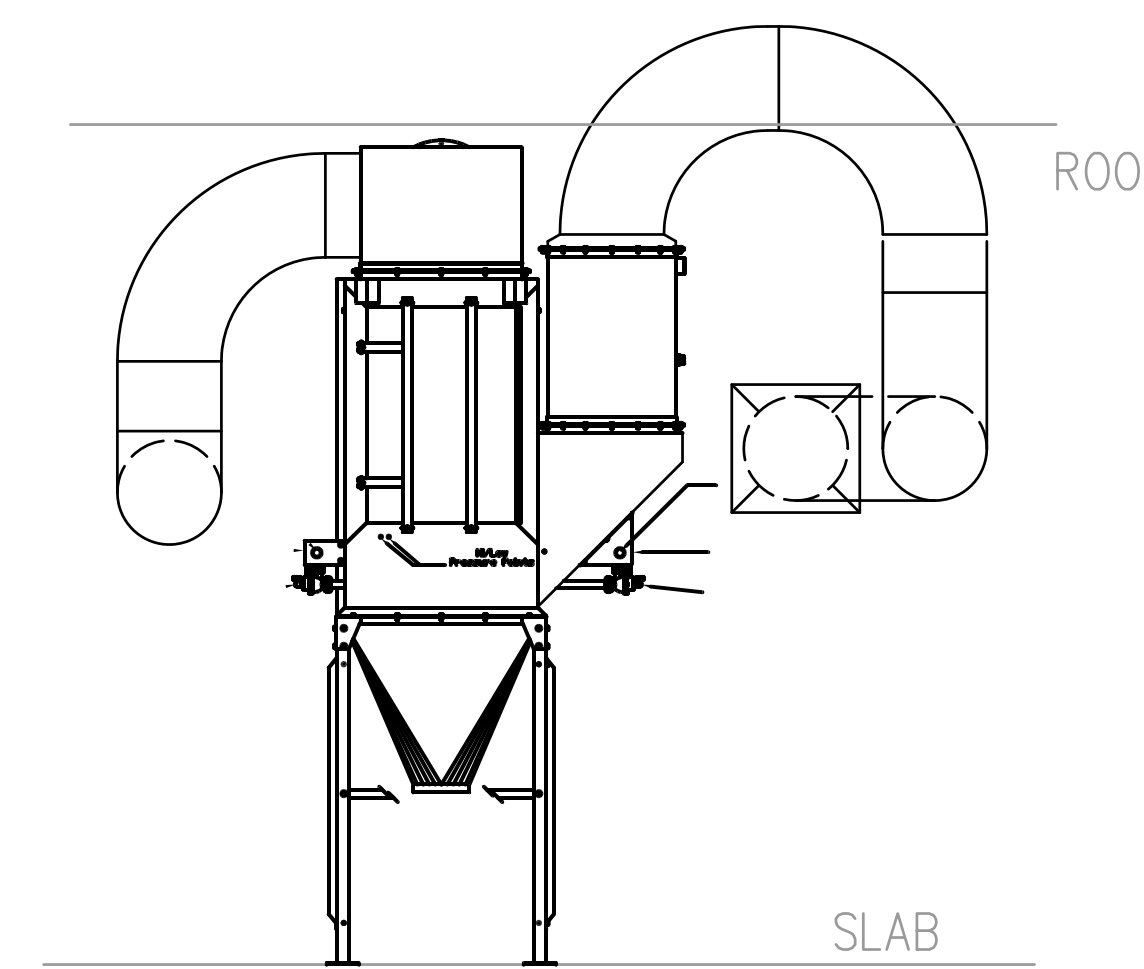
- NOTES:**
- BASE BID: CONTRACTOR TO LOCATE AND DETERMINE EXISTING CONCRETE PAD REINFORCING STEEL AND THICKNESS USING GROUND PENETRATING RADAR OR OTHER TESTING MEANS APPROPRIATE FOR OBTAINING DESIRED RESULTS. REPORT FINDING TO OWNER TO DETERMINE IF EXISTING PAD WILL BE RE-USED.
 - ALTERNATE BID: REMOVE AND DISPOSE OF EXISTING PAD AND PROVIDE NEW CONCRETE PAD WITH DIMENSIONS OF 11'x14' REINFORCED AS NOTED. SEE DETAIL FOR ADDITIONAL INFORMATION.



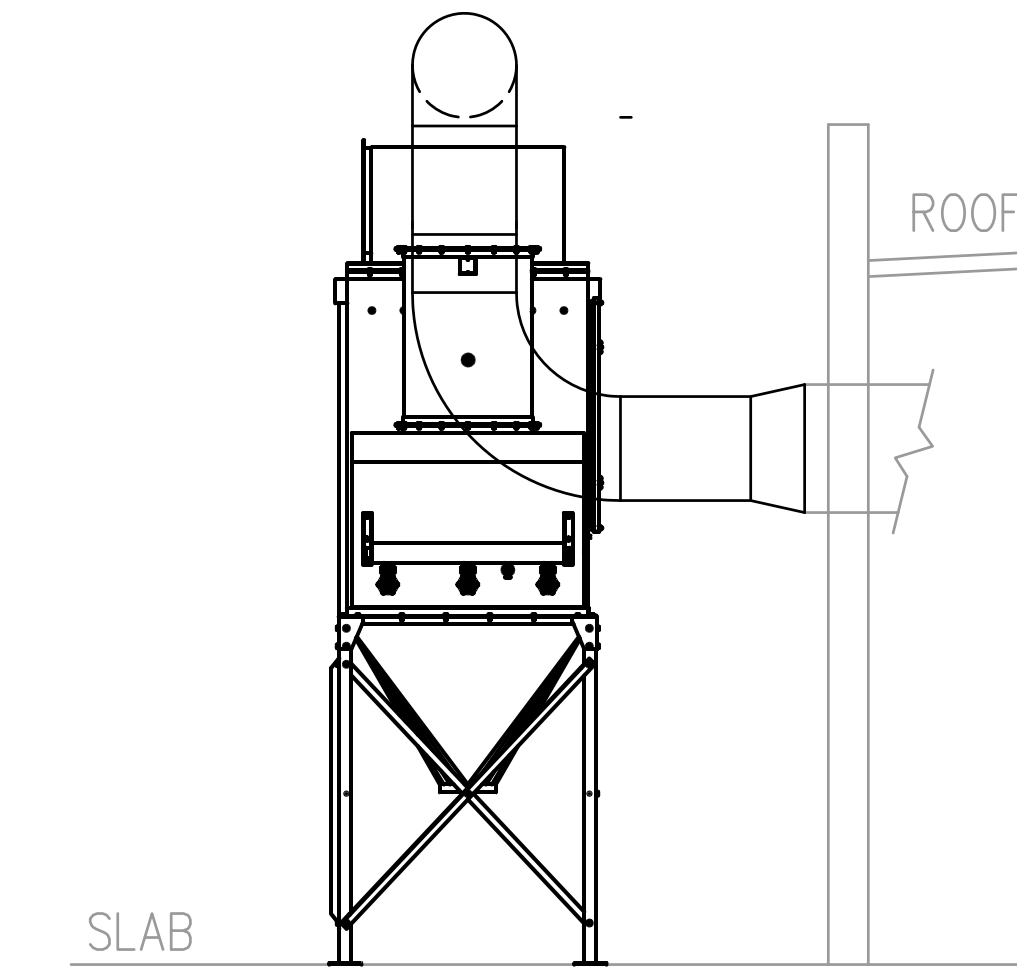
ALT. NO. 2: TYPICAL EXTERIOR PAD 4
 SCALE: 3/4" = 1'-0"



DUST COLLECTOR DETAILS 1
 SCALE: NTS



ELEVATION VIEW 2



ELEVATION VIEW 1

DUST COLLECTOR ELEVATIONS 2
 SCALE: 1/4" = 1'-0"

ISSUED	
BID DOCUMENTS	
TITLES	

JOB NO.	17-292-1142
DRAWN	DDW
CHECKED	DDW
APPROVED	DDW

SHEET TITLE

MECHANICAL DETAILS

SHEET NUMBER