

GENERAL NOTES

ALL CONSTRUCTION SHALL BE IN ACCORDANCE WITH THE REQUIREMENTS SET FORTH BY 2015 IBC AND SHALL CONFORM TO ALL OTHER APPLICABLE MUNICIPAL, STATE, AND FEDERAL REGULATIONS INCLUDING THE ILLINOIS ACCESSIBILITY CODE (1997) AND THE AMERICANS WITH DISABILITIES ACT.

B: MISCELLANEOUS AND DEMOLITION NOTES

- ALL CONTRACTORS ARE REQUIRED TO VISIT THE SITE AND BE KNOWLEDGEABLE REGARDING EXISTING CONDITIONS AND THEIR EFFECT ON THE PROPOSED WORK. CONTRACTORS SHALL VERIFY AND BE RESPONSIBLE FOR ANY CONDITIONS REQUIRING MODIFICATION BEFORE PROCEEDING WITH THE PROJECT.
- NOTIFY THE OWNER'S REPRESENTATIVE A MINIMUM OF 72 HOURS PRIOR TO THE INTERRUPTION OF ANY UTILITY.
- CONTRACTORS AND SUBCONTRACTORS SHALL COORDINATE THEIR WORK WITH THAT OF OTHER TRADES.
- NO WORK WILL BE PERMITTED TO BE INSTALLED WITHOUT RECEIPT AND SUBSEQUENT REVIEW OF FULL AND COMPLETE SUBMITTALS BY THE ARCHITECT/ENGINEER.
- DO NOT SCALE DRAWINGS, DIMENSIONS INDICATED TAKE PRECEDENCE OVER SCALE.
- VERIFY ALL DIMENSIONS AND ELEVATIONS IN THE FIELD. WHERE DISCREPANCIES ARE FOUND BETWEEN DIMENSIONS OR ELEVATIONS SHOWN AND ACTUAL FIELD CONDITIONS, NOTIFY ARCHITECT/ENGINEER.
- DEFINITIONS:
 - FURNISH:** SUPPLY, DELIVER TO AND UNLOAD AT PROJECT SITE READY FOR ASSEMBLY AND INCORPORATION INTO THE WORK.
 - INSTALL:** AT THE PROJECT SITE, UNPACK/UNGRATE ASSEMBLE, PLACE, ANCHOR, FINISH, PROTECT, CLEAN, AND PERFORM ALL OTHER SIMILAR OPERATIONS REQUIRED TO FULLY AND PROPERLY INCORPORATE AN ITEM INTO THE WORK. LEGALLY DISPOSE OF OR RECYCLE PACKAGING AND EXTRA MATERIAL OFF-SITE.
 - PROJECT SITE:** THE SPACE AVAILABLE TO THE CONTRACTOR FOR PERFORMANCE OF CONSTRUCTION ACTIVITIES. THE EXTENT OF THE PROJECT SITE IS THE AREAS TO BE REMODELED AS INDICATED ON THE DRAWINGS, AND EXTENDS TO SUCH AREAS AS CONTAIN TERMINATIONS FOR POWER, DATA AND OTHER SERVICES.
 - OFF-SITE:** OUTSIDE THE PROPERTY IN WHICH THE PROJECT SITE IS LOCATED.
 - PROVIDE:** FURNISH AND INSTALL, AS DEFINED ABOVE.
- WHERE CONFLICTS MAY EXIST BETWEEN THE REQUIREMENTS OF PORTIONS OF THE CONTRACT DOCUMENTS, THE GREATER QUANTITY, HIGHER QUALITY OR MORE STRINGENT REQUIREMENT SHALL GOVERN. THEREFORE, BY EXECUTING A CONTRACT FOR CONSTRUCTION, THE CONTRACTOR AGREES THAT, IF IT RAISED NO QUESTIONS REGARDING SUCH CONFLICTS DURING THE BIDDING PROCESS, AND IN THE ABSENCE OF A CLARIFYING ADDENDUM ISSUED DURING THE BIDDING PROCESS, IT HAS VOLUNTEERED TO COMPLY WITH THE MORE EXPENSIVE REQUIREMENT AS PART OF ITS BASE BID AND IS NOT ENTITLED TO ANY ADDITIONAL COMPENSATION TO RESOLVE THE CONFLICT.
- THE CONTRACT DOCUMENTS REQUIRE THE CONTRACTOR TO FURNISH AND INSTALL COMPLETE PRODUCTS, SYSTEMS AND SERVICES. BY EXECUTING A CONTRACT FOR CONSTRUCTION, THE CONTRACTOR AGREES THAT THE DRAWINGS SET FORTH THE DESIGN INTENT AND, THEREFORE, MAY NOT EXPRESSLY DEPICT EVERY LENGTH, SEGMENT, PIECE, PART, COMPONENT OR UNIT OF A PRODUCT, SYSTEM OR SERVICE. THE CONTRACTOR FURTHER AGREES THAT, AS PART OF ITS BID, IT MUST FURNISH AND INSTALL EVERY LENGTH, SEGMENT, PIECE, PART, COMPONENT OR UNIT OF A PRODUCT, SYSTEM OR SERVICE AND, CONSEQUENTLY, THE CONTRACTOR IS NOT ENTITLED TO ANY ADDITIONAL COMPENSATION FOR ANY LENGTH, SEGMENT, PIECE, PART COMPONENT OR UNIT OF A PRODUCT, SYSTEM OR SERVICE BECAUSE IT IS NOT EXPRESSLY DEPICTED HEREIN.
- ARCHITECT SHALL BE NAMED AS ADDITIONAL INSURED ON ALL REQUIRED INSURANCE POLICIES.

C: BIDDING NOTES

- REFER TO THE JJC FRONT-END DOCUMENTS FOR THE ALLOWANCE THAT THE GENERAL CONTRACTOR IS TO PROVIDE AS PART OF HIS/HER BID FOR UNFORSEEN/MISCELLANEOUS CONDITIONS. WHEN FIGURING THIS ALLOWANCE IN THE BID, CONTRACTOR IS TO INCLUDE ALL NECESSARY OVERHEAD AND PROFIT. THIS ALLOWANCE IS NOT FOR THE CONTRACTOR'S BENEFIT, AND IS ONLY AUTHORIZED TO CHARGE AGAINST THIS ALLOWANCE WHEN DIRECTED AND APPROVED BY JOLIET JUNIOR COLLEGE. THE CONTRACTOR WILL BE ALLOWED TO INVOICE FOR MATERIAL AND RAW LABOR COST ONLY.
- CONSTRUCTION SCHEDULE:**
CONSTRUCTION START AND SUBSTANTIAL COMPLETION IN ACCORDANCE WITH JJC FRONT-END DOCUMENTS.
- ALL LOUD AND DISRUPTIVE WORK IS TO BE PERFORMED BETWEEN THE HOURS OF 10:00 PM AND 6:00 AM.

STANDARD ABBREVIATIONS

①	— AT	EXP	— EXPANSION	PL	— PLATE
A B	— ANCHOR BOLT	EXP CONST	— EXPOSED CONSTRUCTION	PL LAM	— PLASTIC LAMINATE
ABR	— ABRASIVE	FD	— FLOOR DRAIN	PL	— PLASTER
AT-(1)	— ACOUSTIC TILE CEILING (TYPE)	FDN	— FOUNDATION	PLB'G	— PLUMBING
AFF	— ABOVE FINISH FLOOR	FE	— FIRE EXTINGUISHER	PLB'G CONTR	— PLUMBING CONTRACTOR
AFG	— ABOVE FINISH GRADE	FEC	— FIRE EXTINGUISHER CABINET	PLYWD	— PLYWOOD
ACOUS	— ACOUSTIC	FHC	— FIRE HOSE CABINET	PNT	— PAINT
ADD'N	— ADDITION	FIN	— FINISH	PVC	— POLYVINYL CHLORIDE
ADD'L	— ADDITIONAL	FLR	— FLOOR	PL-(1)	— GYPSUM PLASTER (TYPE)
ADJ	— ADJACENT	FRT	— FIRE RETARDANT TREATED (RATED)	R OR RAD	— RADIUS
ADJT	— ADJUSTABLE	FUR CHN'L	— FURRING CHANNEL	R	— RISER
AL	— ALUMINUM	FTG	— FOOTING	RD	— ROOF DRAIN
ALT	— ALTERNATE	GA	— GAUGE	RO	— ROUGH OPENING
ANCH	— ANCHOR	GALV	— GALVANIZED	RF (1)	— RUBBER FLOORING (TYPE)
AP	— ACCESS PANEL	GEN CONTR	— GENERAL CONTRACTOR	RH	— RIGHT HAND
APPROX	— APPROXIMATE	GC	— GENERAL CONTRACTOR	REF	— REFERENCE
ASPH	— ASPHALT	GL	— GLASS	REINF	— REINFORCING
AUTO	— AUTOMATIC	GYP DB-(1)	— GYPSUM WALL BOARD (DRYWALL)(TYPE)	REQ'D	— REQUIRED
AVG	— AVERAGE	GYP PL-(1)	— GYPSUM PLASTER (TYPE)	RM	— ROOM
BSMT	— BASEMENT	H	— HIGH	SF	— SQUARE FOOT
BD	— BOARD	HD	— HEAVY DUTY	SI	— SQUARE INCH
BITUM	— BITUMINOUS/BITUMASTIC	HD	— HARD	SK	— SINK
BLDG	— BUILDING	HDNR	— HARDENER	SS	— STAINLESS STEEL
BLK'G	— BLOCKING (WOOD)	HD WD-(1)	— HARD WOOD (TYPE)	SSK	— SERVICE SINK
BM	— BEAM	HDWRE	— HARDWARE	SQ	— SQUARE
B.M.	— BENCH MARK	HGT	— HEIGHT	SCHED	— SCHEDULE
BT STL PL	— BENT STEEL PLATE	HM	— HOLLOW METAL	SEAL/HDNR	— SEALER/HARDENER
BRG	— BEARING	HP	— HIGH POINT	SEC	— SECTION
BRKT	— BRACKET	HORIZ	— HORIZONTAL	SHT	— SHEET
BRK	— BRICK	Htg	— HEATING	SIM	— SIMILAR
BTM	— BOTTOM	HVAC	— HEATING/VENTILATING/AIR CONDITIONING	SOG	— SLAB ON GRADE
BTWN	— BETWEEN	IN	— INCH	SPEC	— SPECIFICATION(S)
CJ	— CONSTRUCTION/CONTRACTION JOINT	ID	— INSIDE DIAMETER	SPC'G	— SPACING
CAB	— CABINET	INCL	— INCLUDE (D)	SPK'R	— SPEAKER
CEM PL-(1)	— CEMENT PLASTER (TYPE)	INSUL	— INSULATION OR INSULATING	STN	— STIN
CT PAV-(1)	— CERAMIC PAVER TILE (TYPE)	JOINT	— JOINT	STD	— STANDARD
OIPC	— CAST- IN- PLACE CONCRETE	KD	— KNOCK DOWN	STD WGT	— STANDARD WEIGHT
CLG	— CEILING	L	— LONG	STL	— STEEL
CLR	— CLEAR	LAM	— LAMINATED	STRUCT	— STRUCTURAL OR STRUCTURE
CO	— CLEAN OUT	LAV	— LAVATORY	SUSP	— SUSPEND(ED)
CMU	— CONCRETE MASONRY UNIT	LHT	— LEFT HAND	SYMM	— SYMMETRICAL
COL	— COLUMN	LP	— LOW POINT	T	— TREAD
COMB	— COMBINATION	LGT WGT	— LIGHTWEIGHT	T&G	— TONGUE AND GROOVE
COMP	— COMPRESSIBLE	LL	— LIVE LOAD	T/B	— TOP OF BEAM
COMP'D	— COMPACTED	LLH	— LONG LEG HORIZONTAL	T/C	— TOP OF CURB
CONC	— CONCRETE	LLV	— LONG LEG VERTICAL	T/F	— TOP OF FOUNDATION
CONC OPNG	— CONCRETE OPENING	LVR	— LOUVER	T/S	— TOP OF SLAB
COND	— CONDITION	MO	— MASONRY OPENING	T/STL	— TOP OF STEEL
CONT	— CONTINUOUS	MT	— METAL THRESHOLD	T/W	— TOP OF WALL
CONTR	— CONTRACT (OR)	MAS'Y	— MASONRY	TB (4)	— TACKBOARD (LENGTH)
OPT-(1)	— CARPET (TYPE)	MAT'L	— MATERIAL	TOM	— TOP OF MASONRY
CT-(1)	— CERAMIC TILE (TYPE)	MAX	— MAXIMUM	TYP	— TYPICAL
CTR	— COUNTER	MB-(16)	— MARKERBOARD- (LENGTH)	UNO	— UNLESS NOTED OTHERWISE
CTR SK	— COUNTER SINK	MECH	— MECHANICAL	VBC	— VINYL BASE COVERED
CTS	— CENTER(S)	MECH CONTR	— MECHANICAL CONTRACTOR	VBS	— VINYL BASE STRAIGHT
CUH	— CABINET UNIT HEATER	MFR	— MANUFACTURER	VCT	— VINYL COMPOSITION TILE
CUV	— CABINET UNIT VENTILATOR	MIN	— MINIMUM	VEN PL (1)	— VENEER PLASTER (TYPE)
DIA	— DIAMETER	MISC	— MISCELLANEOUS	VERT	— VERTICAL
DIM	— DIMENSION	MSB	— MOP SERVICE BASIN (SINK)	W	— WIDE OR WIDTH
DN	— DOWN	MT(D)	— MOUNT(ED)	W/	— WITH
DR	— DOOR	MTL	— METAL	W/O	— WITHOUT
DWG'S	— DRAWINGS	NIC	— NOT IN CONTRACT	WCG	— WALL CORNER GUARD
DTL	— DETAIL	NOM	— NOMINAL	WD	— WOOD
DWL'S	— DOWELS	NTS	— NOT TO SCALE	WON	— WINDOW
EA	— EACH	NO	— NUMBER	WGT	— WEIGHT
EJ	— EXPANSION JOINT	OA	— OVERALL	WP	— WATER PROOF
EL	— ELEVATION	OC	— ON CENTER	WWF	— WELDED WIRE FABRIC
ELEC	— ELECTRIC/ELECTRICAL	OD	— OUTSIDE DIAMETER	WSB	— WALL SERVICE BASIN
ELEC CONTR	— ELECTRICAL CONTRACTOR	OF	— OUTSIDE FACE		
ELEVATOR	— ELEVATOR	OPN'G	— OPENING		
EMBED	— EMBEDMENT	OPP	— OPPOSITE		
EMER	— EMERGENCY	OPP HD	— OPPOSITE HAND		
EP PNT	— EPOXY PAINT	PSF	— POUNDS PER SQUARE FOOT		
EQ	— EQUAL	PSI	— POUNDS PER SQUARE INCH		
EW	— EACH WAY	PT	— PRESSURE TREATED		
EWG	— ELECTRIC WATER COOLER	PTN	— PAVEMENT		
EWB	— ELECTRIC WATER HEATER	PAV'T	— PAVEMENT		
ER-(26)	— EXHIBIT RAIL (LENGTH)	PC	— PIECE		
EXIST	— EXISTING	PFM	— PERMANENT FLOOR MAT		

THE MATERIALS, ABBREVIATIONS, AND DRAFTING SYMBOLS LEGEND ARE EACH AN ALL INCLUSIVE MASTER LIST USED BY THIS FIRM. THE INCLUSION OF THESE LEGENDS INTO THESE DOCUMENTS DOES NOT IMPLY THAT ALL THE SYMBOLS OR MATERIALS INCLUDED IN THESE LEGENDS ARE INCORPORATED INTO THIS PROJECT.

DRAFTING SYMBOLS AND MATERIALS LEGEND

DETAIL NUMBER	8
DRAWING NUMBER	A12.24
DETAIL NUMBER	23
DRAWING NUMBER	A7.19
DETAIL NUMBER	2
DRAWING NUMBER	6 49.19 5
DETAIL NUMBER	1
DRAWING NUMBER	AE.05
COLUMN NUMBER	26
LOCATION ELEVATION	T/1ST FLR 100'-0"
ROOM NUMBER	204
DOOR NO. NEW	203.2
DOOR NO. EXISTING	203.1X
NOMINAL THICKNESS	48
CONSTRUCTION TYPE	
SPECIAL CONDITION	
KEYNOTE	15.21
IDENTIFICATION	
WINDOW TYPE	⊗
IDENTIFICATION	
TOILET ACCESSORY	A
IDENTIFICATION	
SPOT ELEVATION	T/1ST FLR 100'-0"
	CONCRETE
	BRICK MASONRY IN PLAN
	CONCRETE MASONRY IN PLAN (RUNNING BOND)
	CONCRETE MASONRY IN PLAN (STACK BOND)
	STONE MASONRY IN PLAN
	RAKED JOINT IN PLAN CTRL/EXP. JOINT IN PLAN
	BRICK MASONRY IN SECTION DETAIL
	CONCRETE MASONRY IN SECTION DETAIL
	STONE MASONRY IN SECTION DETAIL
	STEEL IN SECTION DETAIL
	DISCONTINUOUS WOOD BLOCKING IN SECTION
	CONTINUOUS WOOD BLOCKING IN SECTION
	FINISHED WOOD IN SECTION DETAIL
	RIGID BOARD INSULATION
	RIGID BOARD INSULATION (ROOFING)
	BATT INSULATION
	GYPSUM BOARD
	ACOUSTICAL CEILING PANEL
	BITUMINOUS CONCRETE (ASPHALT) PAVING IN SECTION
	AGGREGATE BALLAST, FILL OR BACKFILL IN SECTION
	UNDISTURBED EARTH
	EARTH BACKFILL



PROJECT

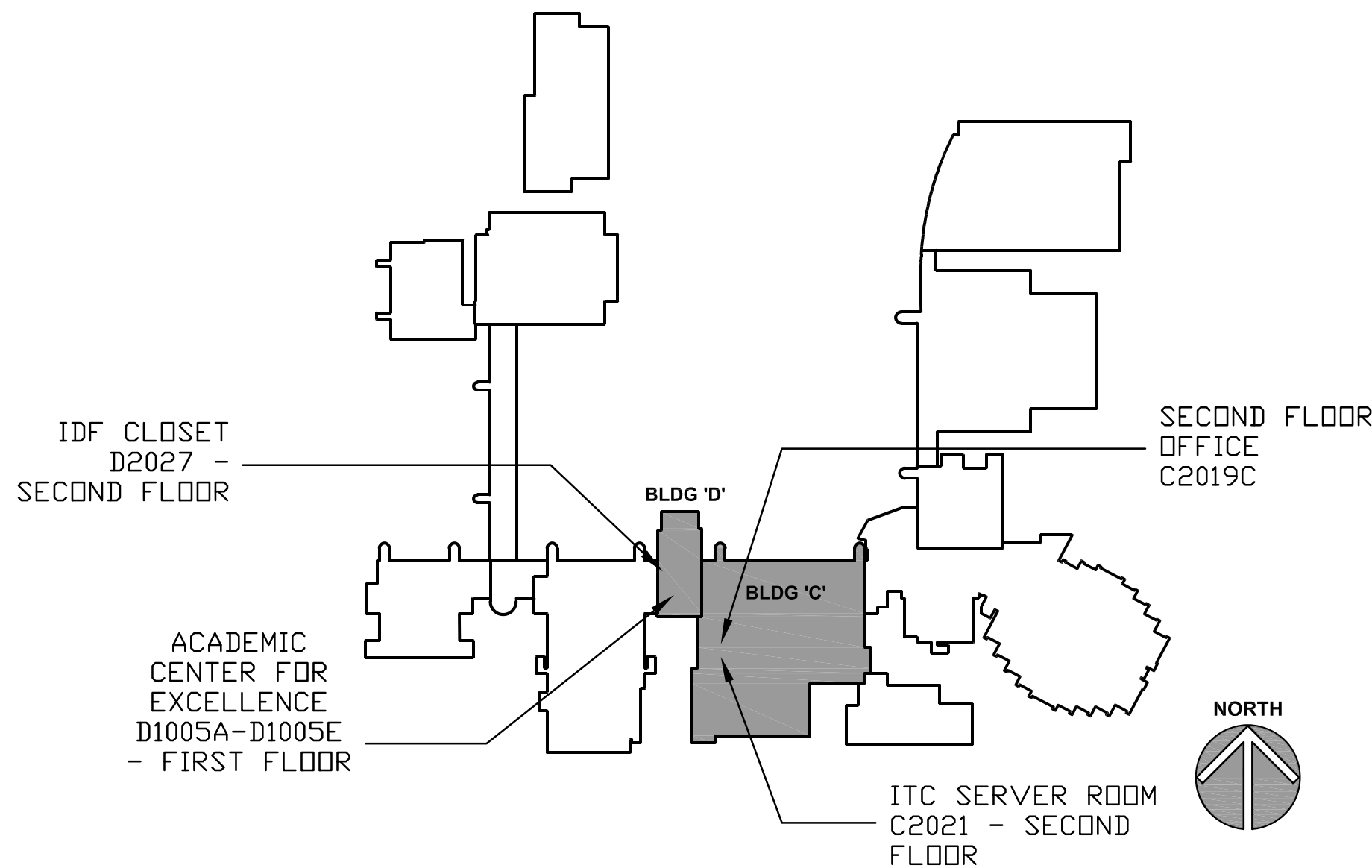
ACADEMIC CENTER FOR EXCELLENCE & SECOND FLOOR OFFICE
JOLIET JUNIOR COLLEGE
1215 HOUBOLT ROAD
JOLIET, IL 60431

OWNER

JOLIET JUNIOR COLLEGE
1215 HOUBOLT ROAD
JOLIET, IL 60431

ARCHITECT/
ENGINEER

KLUBER ARCHITECTS + ENGINEERS
10 S. SHUMWAY AVE.
BATAVIA, ILLINOIS 60510
TEL 630-406-1213
FAX 630-406-9472
www.kluberinc.com



SEALS & CERTIFICATES

I HAVE PREPARED, OR CAUSED TO BE PREPARED UNDER MY DIRECT SUPERVISION, THE ATTACHED PLANS AND SPECIFICATIONS AND STATE THAT TO THE BEST OF MY KNOWLEDGE AND BELIEF, AND TO THE EXTENT OF MY CONTRACTUAL OBLIGATION, THEY ARE IN COMPLIANCE WITH IBC 2015 EDITION, THE ENVIRONMENTAL BARRIERS ACT AND THE ILLINOIS ACCESSIBILITY CODE.

KLUBER, INC. ILLINOIS PROFESSIONAL DESIGN FIRM LICENSE #184-001284

ARCHITECT'S SEAL

MECHANICAL ENGINEER'S SEAL

ELECTRICAL ENGINEER'S SEAL

"G" SERIES, "A" SERIES

"G" SERIES
"ME" SERIES

"G" SERIES
"ME" SERIES

INDEX OF DRAWINGS

G100	COVER SHEET, GENERAL NOTES, SYMBOLS, & DRAWING INDEX
A210	DEMOLITION PLANS – ACADEMIC CENTER FOR EXCELLENCE AND SECOND FLOOR OFFICE
A310	NEW WORK PLANS – ACADEMIC CENTER FOR EXCELLENCE AND SECOND FLOOR OFFICE
A810	ARCHITECTURAL SCHEDULES AND DETAILS
ME310	MECHANICAL AND ELECTRICAL FLOOR PLANS

Kluber
Architects + Engineers

Kluber, Inc.
Batavia, Illinois 60510
Tel. 630-406-1213
Gurnee, Illinois 60031
Tel. 847-236-9428
www.kluberinc.com

ACADEMIC CENTER FOR EXCELLENCE & SECOND FLOOR OFFICE

JOLIET JUNIOR COLLEGE
1215 HOUBOLT ROAD
JOLIET, IL 60431

BUILDING CODE DATA

2015 INTERNATIONAL BUILDING CODE
2014 ILLINOIS STATE PLUMBING CODE
2015 INTERNATIONAL MECHANICAL CODE
2015 INTERNATIONAL FUEL AND GAS CODE
2015 INTERNATIONAL ENERGY CODE
2015 INTERNATIONAL FIRE PREVENTION CODE
1997 IL ACCESSIBILITY CODE
2014 NATIONAL ELECTRIC CODE
LOCAL AMENDMENTS TO THE ABOVE CODES

ISSUED

REVISIONS

JOB NO. 18-292-1185
DRAWN VAD
CHECKED CDH / JMB
APPROVED CDH

SHEET TITLE
COVER SHEET,
GENERAL NOTES,
SYMBOLS AND
DRAWING INDEX

SHEET NUMBER

G100



KEYNOTES ARE NOT ALWAYS REPEATED ACROSS ALL DRAWINGS ON THIS SHEET. AN UN-KEYNOTED ITEM ON THIS SHEET IS THE SAME AS A KEYNOTED ITEM ON THIS SHEET HAVING THE SAME GRAPHIC APPEARANCE.

- ## ROOM SCHEDULE

GENERAL NOTES

- | | | |
|--|----------|---------------|
| | | ISSUED |
| | 04/25/18 | BID DOCUMENTS |

SHEET TITLE
DEMOLITION PLANS ACADEMIC CENTER FOR EXCELLENCE AND SECOND FLOOR OFFICE

A210



A310

DOOR SCHEDULE

ROOM NO. NO.	ROOM NAME	DOOR NO.	DOOR															FRAME					DETAILS			HDWR SET	FIRE RATING (MIN.)	
			QTY.	W	H	THK.	TYPE	MAT.	H.M. DOORS			WOOD DOORS				FINISH	GLASS	TYPE	MAT.	GA.	FINISH	GLASS	HEAD	JAMB	SILL			
									GA.	GRD.	MDL.	SPECIES	GRD.	CUT	MATCH													CORE
C2019C	PRIVATE OFFICE	C2019C.1	1	3'-0"	7'-10"	1 3/4"	C	STL	18	II	1	-	-	-	-	-	P4/PD	FGI	1	STL	16	P4/PD	-	10/A810	10/A810	-	1	-
D1005A	PRIVATE OFFICE	D1005A.1	1	3'-0"	7'-10"	1 3/4"	A	STL	18	II	1	-	-	-	-	-	P4/PD	-	2	STL	16	P4/PD	FGI	10/A810	10/A810	-	1	-
D1005B	COLLABORATION ROOM	D1005B.1	1	3'-0"	7'-10"	1 3/4"	B	STL	18	II	1	-	-	-	-	-	P4/PD	FGI	4	AL	-	A	FGI	7.8/A810	7.8.9/A810	-	1	-
		D1005B.2	-	-	-	-	-	-	-	-	-	-	-	-	-	-	-	-	3	STL	16	P4/PD	FGI	10/A810	10/A810	-	-	-
D1005C	OPEN OFFICE	-	-	-	-	-	-	-	-	-	-	-	-	-	-	-	-	-	-	-	-	-	-	-	-	-	-	-
D1005D	STORAGE ROOM	-	-	-	-	-	-	-	-	-	-	-	-	-	-	-	-	-	-	-	-	-	-	-	-	-	-	-
D1005E	CORRIDOR	D1005E.1	1	3'-0"	7'-10"	1 3/4"	B	STL	18	II	1	-	-	-	-	-	P4/PD	FGI	2	STL	16	P4/PD	FGI	10/A810	10/A810	-	2	-

HARDWARE SCHEDULE

SET NO.	HINGES	LOCK SET	EXIT DEVICE	CLOSER	HOLDER	STOP	THRES-HOLD	KICK PLATE	MOP PLATE	WEATHER STRIPPING	SWEEP	CARD READER	ELEC. STRIKE	REMARKS
SET 1	BUTTS	CYLINDRICAL	---	---	---	---	---	---	---	---	---	YES	YES	1, 2
SET 2	BUTTS	MORTISE	---	YES	---	---	---	YES	---	---	---	YES	YES	1, 2

HARDWARE SCHEDULE REMARKS

1. CYLINDER LOCKSET FURNISHED BY OWNER AND INSTALLED BY CONTRACTOR.
2. PROVIDE VONDUPRIN 6211 DOOR STRIKES.

FINISH SCHEDULE

RM. NO.	ROOM NAME	FLOOR		BASE	NORTH WALL		SOUTH WALL	EAST WALL	WEST WALL	CEILING		ROOM	REMARKS
		FIN.	CC.		FIN.	CC.				FIN.	CC.		
		FIN.	CC.	FIN.	CC.	FIN.	CC.	FIN.	CC.	FIN.	CC.	HEIGHT	
C2019C	PRIVATE OFFICE	F1	CAA	B1	VBA	P1	PA	P1	PA	P1	PA	C3	ACTA
D1005A	PRIVATE OFFICE	F1	CAA	B1/B2	VBA	P1	PA	P1	PA	P1	PA	C1	ACTA
D1005B	COLLABORATION ROOM	F1	CAA	B1/B2	VBA	P1	PA	P1	PA	P1	PA	C1	ACTA
D1005C	OPEN OFFICE	F1	CAA	B1	VBA	P1	PA	P1	PA	P1	PA	C1	ACTA
D1005D	STORAGE ROOM	F1	CAA	B1	VBA	P1	PA	P1	PA	P1	PA	C1	ACTA
D1005E	CORRIDOR	F1/F2	CAA	B1	VBA	P1	PA	P1	PA	P1	PA	C1	ACTA
0000	EXISTING ROOM												
0000	EXISTING ROOM												

DOOR SCHEDULE ABBREVIATIONS

MATERIAL
AL : ALUMINUM
STL : STEEL

GRADE (HOLLOW METAL)
I : STANDARD DUTY
II : HEAVY DUTY
III : EXTRA HEAVY DUTY

MODEL
1 : FULL FLUSH

FINISH:
P4: PAINT-ENAMEL "SEMI-GLOSS"
A: ANODIZED

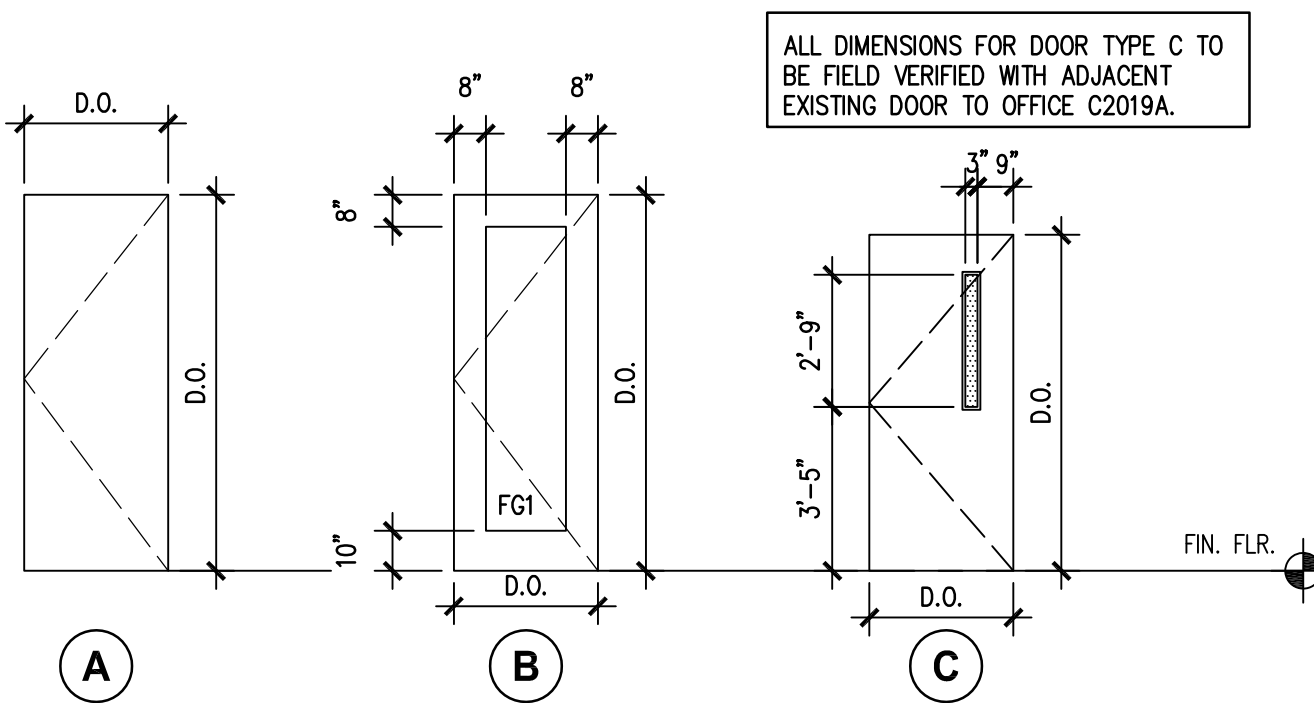
FINISH SCHEDULE REMARKS

1. USE F2 AT STAIR TREADS AND F1 AT BOTTOM OF STAIR.
2. PAINT SOUTH DOOR AND FRAME: PAINT ON BOTH EXTERIOR AND INTERIOR FACE.
3. 8'-0" CEILING MEASURE AT DOOR D1005E.1. CEILING TO REMAIN FLAT / LEVEL ACROSS ENTIRE LENGTH OF CORRIDOR.
4. PAINT CONCRETE COLUMNS COLOR PA.
5. PROVIDE B2 BASE AT VERTICAL FACE OF PERIMETER CONCRETE FOUNDATION WALL.

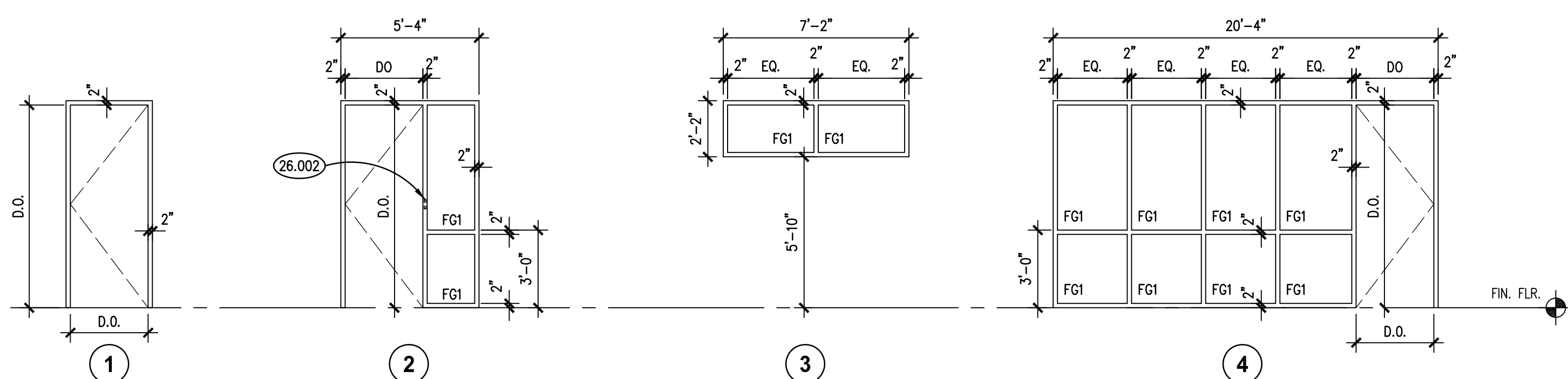
KEYNOTES

- 2.604 EXISTING HALF WALL TO REMAIN.
- 7.900 JOINT SEALANT: REFER TO SCHEDULE; PROVIDE BACKER ROD OR BOND BREAKER.
- 8.112 STEEL DOOR: REFER TO DOOR, FRAME AND BORROWED LIGHT SCHEDULE.
- 8.430 ALUMINUM STOREFRONT FRAMING.
- 8.800 GLAZING: REFER TO DOOR SCHEDULE OR ROOM FINISH SCHEDULE.
- 8.800 GLAZING: REFER TO DOOR/FRAME/WINDOW SCHEDULES FOR TYPE.
- 9.203 METAL STUD FRAMING: 3-5/8" STUD; 16" O.C. SPACING; 20 GAUGE UNLESS NOTED OTHERWISE; ANCHORAGE TO SUIT APPLICATION.
- 9.214 METAL STUD FRAMING: STUD RUNNER: SIZE TO MATCH METAL STUDS.
- 9.290 GYPSUM BOARD: 5/8" THICK; TYPE "X".
- 9.294 GYPSUM BOARD ACCESSORY: ACOUSTICAL SEALANT.
- 9.295 GYPSUM BOARD ACCESSORY: ACOUSTICAL INSULATION: SOUND ATTENUATION BATTS; THICKNESS AS SPECIFIED.
- 9.510 ACOUSTICAL CEILING PANELS AND GRID.
- 26.002 CARD ACCESS: REFER TO ELECTRICAL DRAWINGS; COORDINATE FRAME PREPARATION REQUIREMENTS AND DEVICE INSTALLATION WITH ELECTRICAL CONTRACTOR.

DOOR TYPES

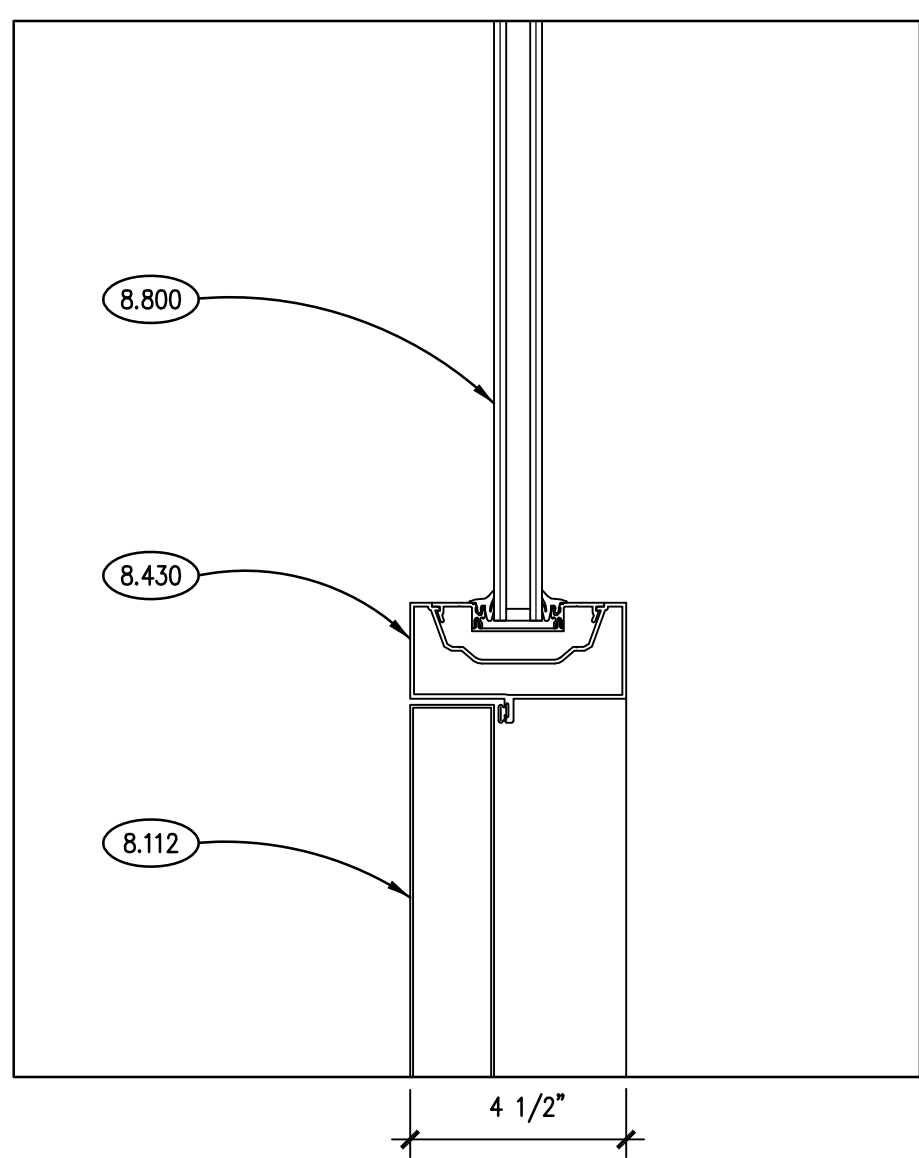


FRAME TYPES



HEAD/JAMB DET. 7

SCALE: 3" = 1'-0"

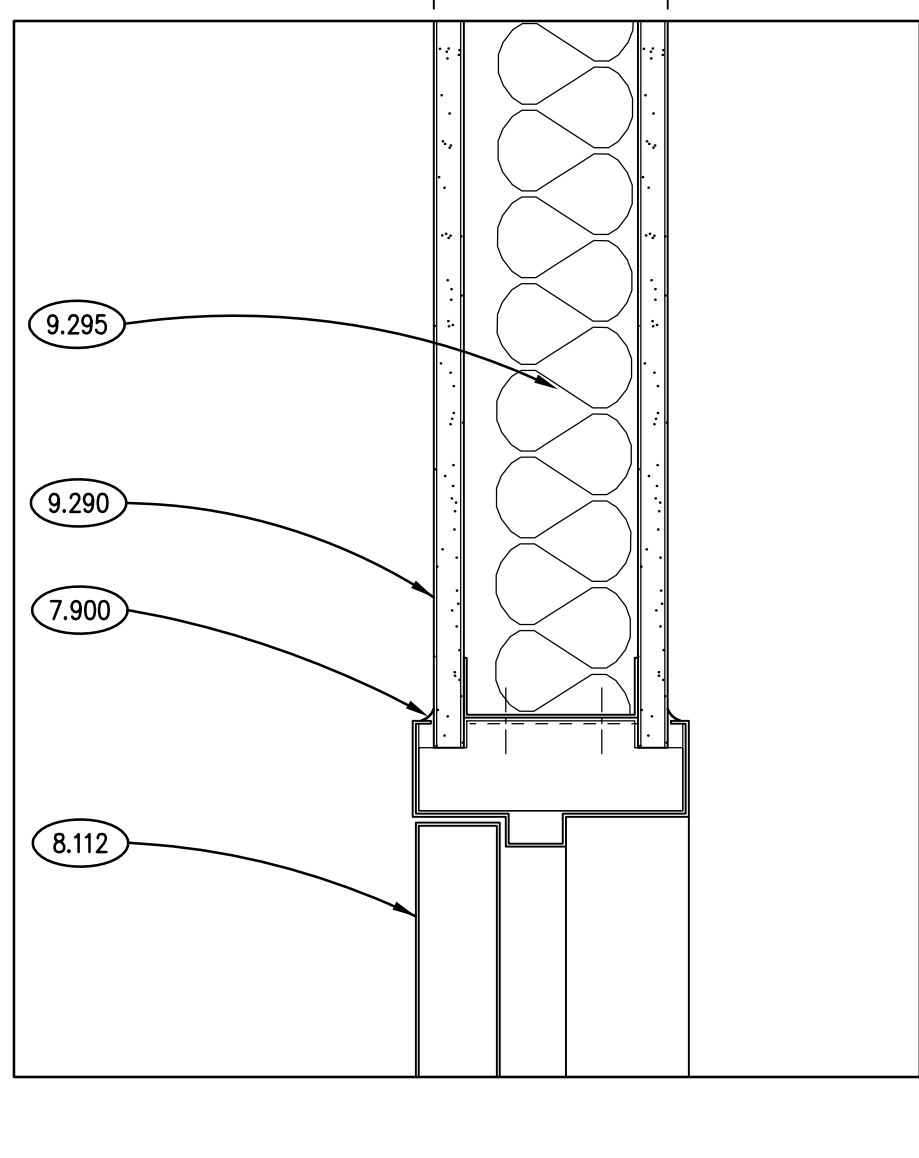


DOOR JAMB DET. 9

SCALE: 3" = 1'-0"

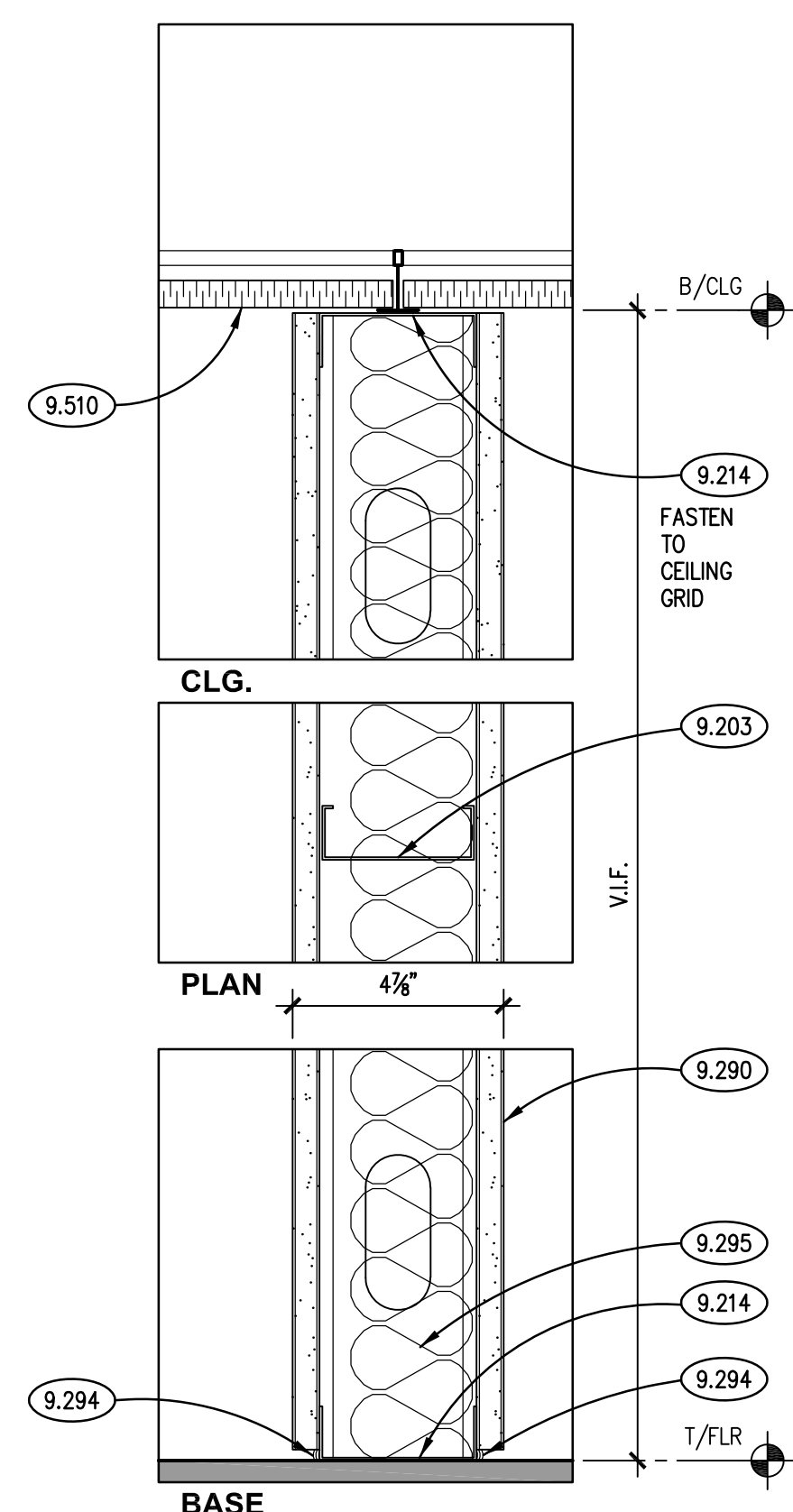
DOOR HEAD/JAMB DET. 8

SCALE: 3" = 1'-0"



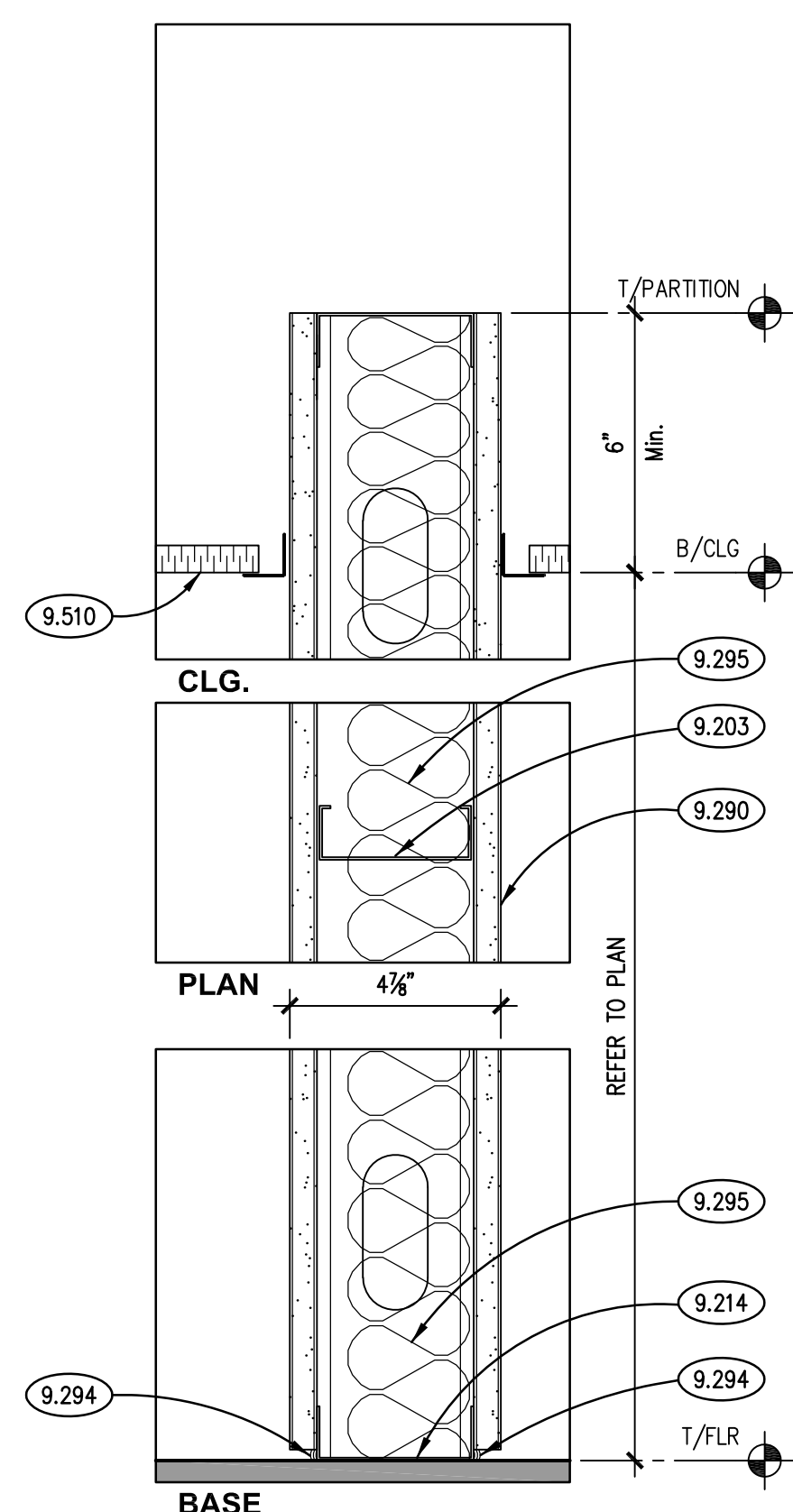
TYP. DOOR HEAD/JAMB DETAIL 10

SCALE: 3" = 1'-0"



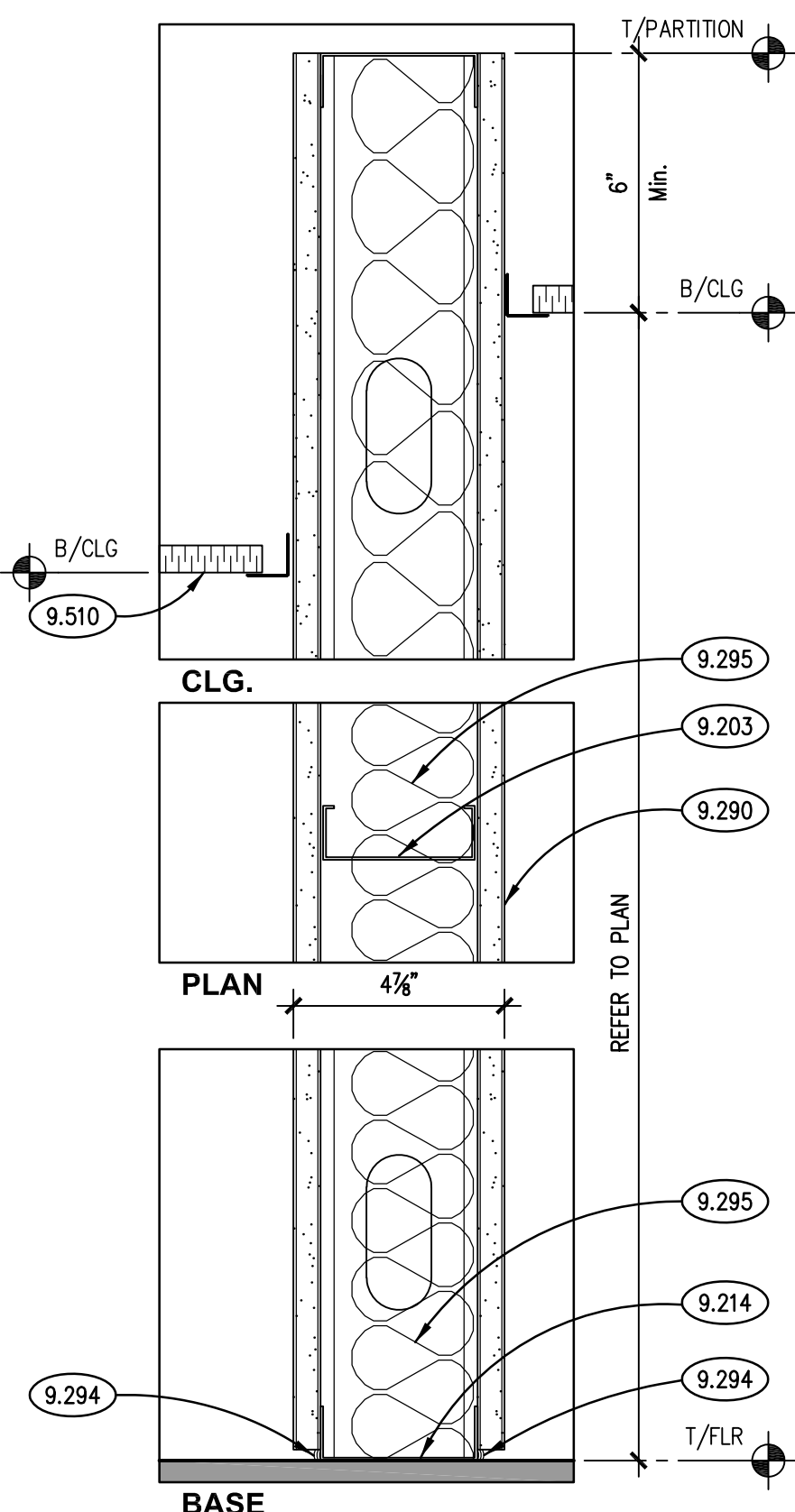
NON-RATED PARTITION G3

SCALE: 3" = 1'-0"



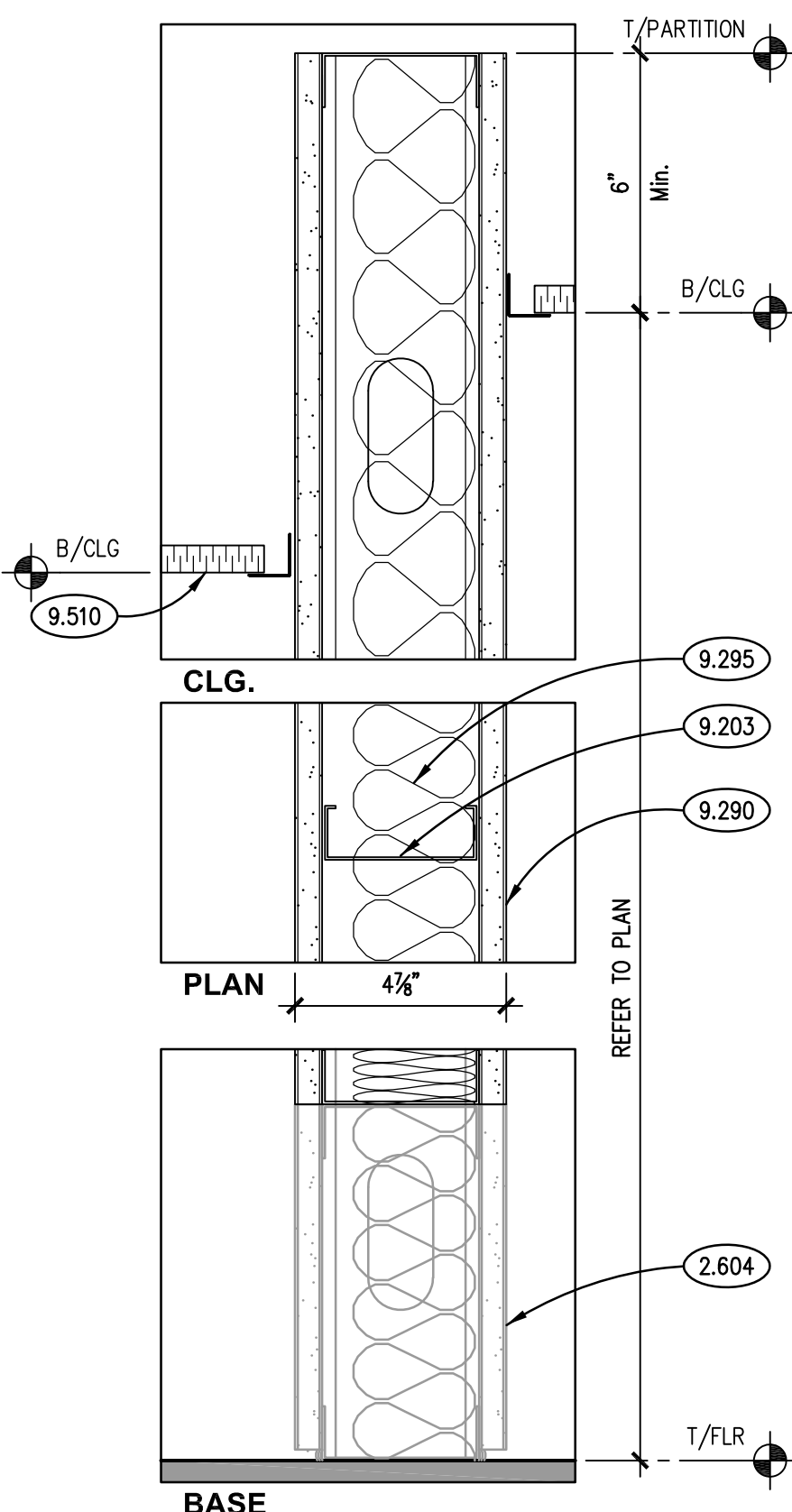
NON-RATED PARTITION G3

SCALE: 3" = 1'-0"



NON-RATED PARTITION G3

SCALE: 3" = 1'-0"



NON-RATED PARTITION G3

SCALE: 3" = 1'-0"

FINISH TYPES

AREA	FIN.	DESCRIPTION	AREA	FIN.	DESCRIPTION
FLOOR	F1	CARPET TILE - CARPET MATERIAL FURNISHED BY OWNER. CONTRACTOR TO INSTALL AND PROVIDE ADHESIVE, SKIM COAT ETC. REFER TO SPECIFICATIONS.	CEILING	C1	ACP: 24"x24" (MTL. SUSP. SYS.)
				C2	NOT USED
				C3	EXISTING TO REMAIN. INSTALL OWNER-FURNISHED TILES AS REQUIRED.
BASE	B1	RESILIENT BASE: 4" COVE JOHNSONITE	PAINT	P1	LATEX - "EGGSHELL"
				P2	LATEX - "FLAT"
				P3	LATEX - "SEMI-GLOSS"
BASE	B2	CARPET TILE: 6"x6" HIGH		P5	WB LIGHT INDUSTRIAL COATING - "SEMI-GLOSS"
			GLASS	FG1	1/4" TEMPERED; CLEAR

COLOR CODE SCHEDULE

AREA	FIN.	MANUFACTURER	COLOR/CAT. #
CEILING-ACOUSTICAL	ACTA	USG OR APPROVED EQUAL	2' X 2' PANEL; CLIMA PLUS; ASTRO; SLT EDGE; 15/16" WIDE FACE GRID; WHITE. OWNER TO FURNISH TILES FOR CONTRACTOR INSTALL.
FLOOR-CARPET	CAA	CARPET TILE: FURNISHED BY OWNER	STYLE: BY OWNER.
PAINT	PA	SHERWIN WILLIAMS	COLOR: #SW7004 "SNOWBOUND"
	PB	BENJAMIN MOORE	COLOR: #BW2121-20 "STEEL WOOL"
	PC	BENJAMIN MOORE	COLOR: TEO BY OWNER
	PD	SHERWIN WILLIAMS	COLOR: #SW6354 "ARCHITECTURAL BROWN"
BASE	VBA	JOHNSONITE	COLOR: 40 "BLACK"
	SSA	DUPONT CORIAN	COLOR: AS SELECTED FROM FULL COLOR RANGE

GENERAL NOTES

1. REFER TO DRAWING G100 FOR PROJECT GENERAL NOTES.
2. REFER TO REFLECTED CEILING PLAN DRAWINGS FOR CEILING HEIGHTS AND FOR LOCATIONS OF SOFFITS AND HEADERS.
3. REFER TO FLOOR PLAN DRAWINGS AND WALL TYPE DRAWINGS FOR WALL SUBSTRATE SURFACE MATERIALS.
4. REPAIR HOLES AND BLEMMISHES ON SURFACES PRIOR TO PAINTING.
5. PAINT SHEENS INDICATED IN FINISH TYPES ARE MPI DESIGNATIONS.
6. PAINT EXPOSED GYPSUM BOARD SURFACES UNLESS NOTED OTHERWISE; USE FINISH TYPE P1 FOR GYPSUM BOARD WALLS; USE FINISH TYPE P1 FOR GYPSUM BOARD SOFFITS AND CEILINGS.
7. PAINT EXPOSED UNFINISHED (EXCEPT STAINLESS STEEL) OR PRIMED INTERIOR METAL SURFACES UNLESS NOTED OTHERWISE; USE FINISH TYPE P3. EXAMPLES INCLUDE, BUT ARE NOT LIMITED TO: HANDRAILS, GUARDRAILS, STAIR COMPONENTS. REFER PLAN AND ELEVATION DRAWINGS FOR LOCATIONS.
8. PAINT EXPOSED UNFINISHED (EXCEPT STAINLESS STEEL), PRIMED OR GALVANIZED EXTERIOR METAL SURFACES UNLESS NOTED OTHERWISE; USE FINISH TYPE P5. EXAMPLES INCLUDE, BUT ARE NOT LIMITED TO: EXTERIOR DOOR. REFER PLAN AND ELEVATION DRAWINGS FOR LOCATIONS.



FIRST FLOOR MECHANICAL PLAN (2)
SCALE: 1/8" = 1'-0"

[illegible]