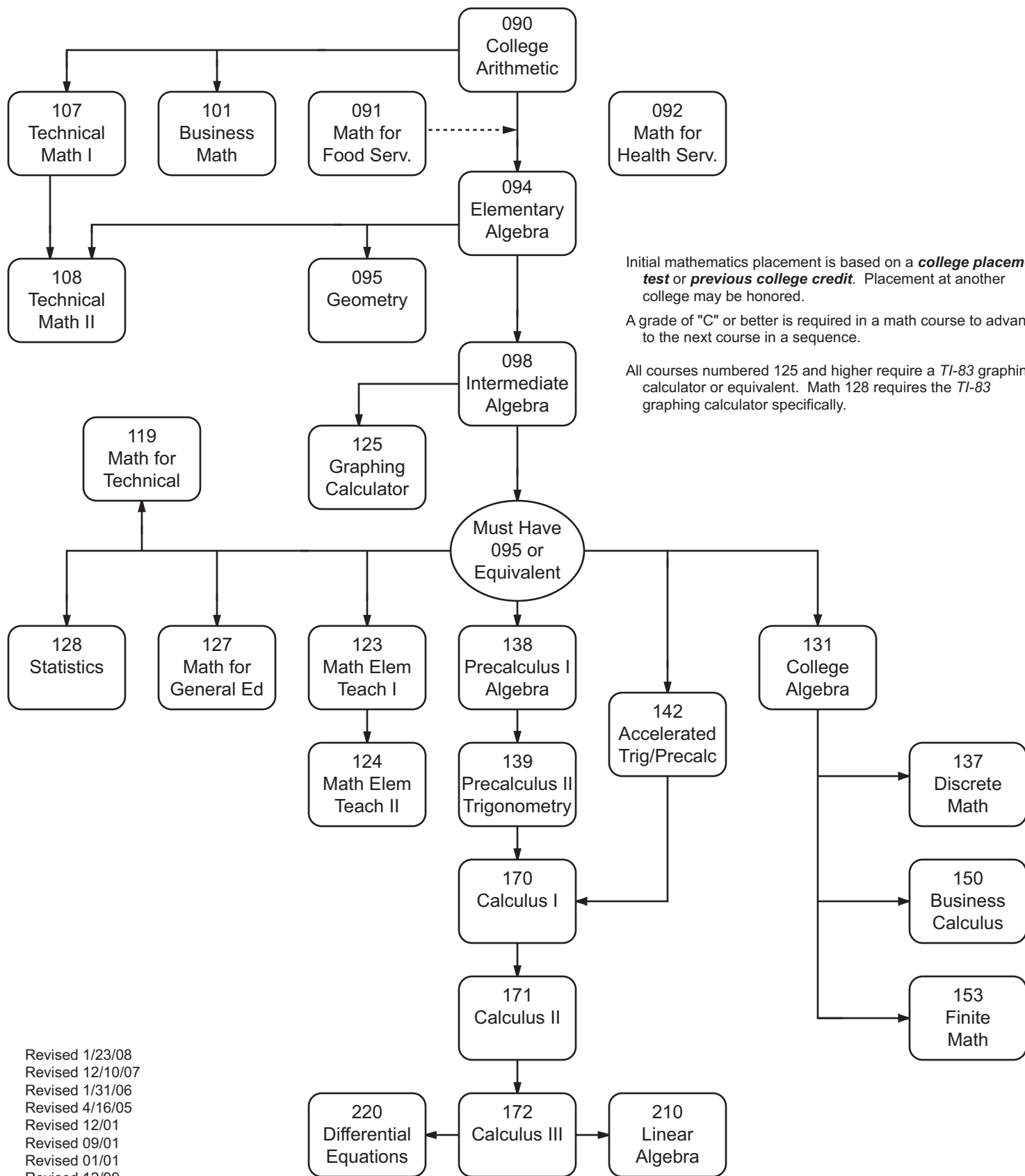


Joliet Junior College Sequence of Mathematics Courses



Initial mathematics placement is based on a **college placement test** or **previous college credit**. Placement at another college may be honored.

A grade of "C" or better is required in a math course to advance to the next course in a sequence.

All courses numbered 125 and higher require a *TI-83* graphing calculator or equivalent. Math 128 requires the *TI-83* graphing calculator specifically.

Revised 1/23/08
 Revised 12/10/07
 Revised 1/31/06
 Revised 4/16/05
 Revised 12/01
 Revised 09/01
 Revised 01/01
 Revised 12/99
 Revised 9/98
 Revised 11/97
 Revised 9/97
 Adopted 8/97