

ELECTRICAL DEMOLITION SYMBOL LIST

SYMBOL:	DESCRIPTION:
WALL CLG FLOOR MOUNT	
— — —	INDICATES EXISTING TO REMAIN.
- - - - - -	INDICATES EXISTING TO BE REMOVED.
□	DISCONNECT SWITCH
⊗	TRANSFORMER
■	SURFACE MOUNTED PANELBOARD

ELECTRICAL DEMOLITION NOTES:

- THE ELECTRICAL DRAWINGS INDICATE EXISTING ELECTRICAL ITEMS TO BE REMOVED. THE DRAWINGS ARE INTENDED TO INDICATE THE SCOPE OF WORK REQUIRED AND DO NOT INDICATE EVERY BOX, CONDUIT, OR WIRE THAT MUST BE REMOVED. THE CONTRACTOR SHALL VISIT THE SITE PRIOR TO SUBMITTING A BID AND VERIFY EXISTING CONDITIONS.
- ELECTRICAL ITEMS REMOVED AND NOT RELOCATED REMAIN THE PROPERTY OF THE OWNER. THE CONTRACTOR SHALL BE RESPONSIBLE FOR THE DISPOSAL OF MATERIAL THE OWNER DOES NOT WANT TO REUSE OR RETAIN (I.E., FOR MAINTENANCE PURPOSES).
- THE CONTRACTOR SHALL OBTAIN APPROVAL FROM THE OWNER BEFORE TURNING OFF POWER TO CIRCUITS, FEEDERS, PANELS, ETC. COORDINATE ALL OUTAGES WITH OWNER.
- WHERE ELECTRICAL DEVICES ARE BEING REMOVED ALL ASSOCIATED CONDUIT AND WIRE BACK TO THE PANELBOARD OR FEEDER JUNCTION BOX SERVING THE DEVICE SHALL ALSO BE REMOVED, UNLESS THE CONDUIT CAN BE REUSED FOR NEW CONDUCTORS.
- ALL CONDUIT AND JUNCTION BOXES SHALL BE REMOVED WHERE WALLS ARE BEING REMOVED. WHERE CONDUIT AND JUNCTION BOXES ARE IN THE CONCRETE SLAB, CUT OFF FLUSH, PULL OUT WIRE, AND PLUG. WHERE CONDUIT AND JUNCTION BOXES ARE RUN EXPOSED, ALL ASSOCIATED CLAMPS, SUPPORTS, HANGERS, ETC., SHALL ALSO BE REMOVED.
- THIS CONTRACTOR SHALL COORDINATE ALL HIS WORK WITH OTHER CONTRACTORS AT THE JOB SITE BEFORE REMOVING EXISTING ELECTRICAL AND INSTALLING NEW ITEMS.
- CONTRACTOR SHALL REMOVE AND INSTALL ALL CEILING TILES REQUIRED FOR THE EXECUTION OF ELECTRICAL WORK INCLUDING AREAS OUTSIDE THE CONTRACT LIMITS OF CONSTRUCTION. CONTRACTOR SHALL REPLACE CEILING TILES WITH IDENTICAL MATERIAL WHERE DAMAGED BY THIS CONTRACTOR.

ONE LINE DIAGRAM NOTES:

- SCCR AND AIC RATINGS LISTED FOR EQUIPMENT ARE MINIMUM REQUIREMENTS FOR BUS BRACING AND DEVICE RATING. ALL EQUIPMENT SHALL BE FULLY RATED UNLESS SPECIFICALLY NOTED AS "SERIES RATED".
- ALL WIRE SHALL BE TYPE "THHN" ABOVE GRADE, FEEDERS LOCATED BELOW FLOOR SLAB OR UNDERGROUND SHALL BE TYPE "THWN".
- CONDUCTOR AND CONDUIT SIZES ON THE LINE AND LOAD SIDES OF ALL NON-FUSIBLE DISCONNECT SWITCHES SHALL BE IDENTICAL UNLESS NOTED OTHERWISE.

GENERAL ELECTRICAL NOTES:

- "1/E-300" INDICATES DETAIL NUMBER/SHEET NUMBER.
- DS1-30R INDICATES ELECTRICAL EQUIPMENT DEFINED IN ELECTRICAL SCHEDULES. REFER TO DRAWINGS CONTAINING ELECTRICAL SCHEDULES. PERMANENT NAMEPLATE SHALL MATCH FINAL EQUIPMENT NOMENCLATURE, NOT EQUIPMENT TAG NAME. REFER TO SPECIFICATIONS.
- Ⓢ INDICATES KEYED NOTE USED TO DESCRIBE ADDITIONAL INFORMATION OF WORK REQUIRED, SPECIFIC TO THE SHEET AND/OR DETAIL IT IS SHOWN WITH.
- ALL ELECTRICAL CONDUCTORS SHALL BE COPPER.
- /// INDICATES NUMBER OF WIRES IN CONDUIT.
 GROUND WIRE
 NEUTRAL WIRE
 PHASE WIRE
- LINE TYPE KEY:
 — NEW WORK BY THIS CONTRACTOR (DARK SOLID LINE)
 — NEW WORK BY OTHERS AND/OR EXISTING TO REMAIN (LIGHT SOLID LINE)
 - - - - - EXISTING TO BE REMOVED BY THIS CONTRACTOR (DARK SHORT DASHED LINE)

ELECTRICAL INSTALLATION NOTES:

- CIRCUIT NUMBERS ARE SHOWN FOR CIRCUIT IDENTIFICATION. CIRCUITING SHALL AGREE WITH NUMBERING ON THE PANEL PROVIDED. COMMON NEUTRALS MAY NOT BE USED FOR BRANCH CIRCUITS. BALANCE THE LOAD ON PANELS AS EVENLY AS POSSIBLE BETWEEN EACH PHASE.
- A GREEN INSULATED GROUND CONDUCTOR SHALL BE INSTALLED WITH ALL CIRCUIT CONDUCTORS UNLESS NOTED OTHERWISE.
- CONCEAL ALL CONDUIT IN WALLS, PARTITIONS AND ABOVE CEILING UNLESS OTHERWISE INDICATED ON THE PLANS OR IN THE SPECIFICATIONS. CONDUIT IN MECHANICAL ROOMS AND STORAGE ROOMS WITHOUT CEILINGS MAY BE EXPOSED ON BUILDING STRUCTURE.
- CONTRACTOR SHALL VERIFY ALL EQUIPMENT LOCATIONS WITH REVIEWED SHOP DRAWINGS. PRIOR TO MAKING THE ACTUAL ELECTRICAL INSTALLATION THIS CONTRACTOR SHALL ADJUST CONNECTION LOCATIONS TO ACCOMMODATE EQUIPMENT.
- ELECTRICAL EQUIPMENT SHALL BE MOUNTED TO AVOID IMPEDANCE OF OPERATION OF AND/OR ACCESS TO ELECTRICAL AND MECHANICAL EQUIPMENT. ALL MOUNTING OF ELECTRICAL EQUIPMENT, ON EQUIPMENT SUPPLIED BY ANOTHER CONTRACTOR, SHALL BE APPROVED IN ADVANCE BY THE OTHER CONTRACTOR.
- ALL FINAL ELECTRICAL CONNECTIONS TO MOTORS SHALL BE MADE WITH FLEXIBLE METAL CONDUIT. USE LIQUID TIGHT CONDUIT AND FITTINGS WHERE SUBJECT TO MOISTURE. ROUTE GROUND WIRE FROM CIRCUIT GROUND TO MOTOR GROUND THROUGH FLEXIBLE CONDUIT. FLEXIBLE CONDUIT SHALL NOT EXCEED 6' IN LENGTH.
- CONTRACTOR SHALL BE RESPONSIBLE FOR ALL OPENINGS REQUIRED IN WALLS. ALL OPENINGS SHALL BE REPAIRED TO MATCH EXISTING BY A QUALIFIED CONTRACTOR AT THE EXPENSE OF THIS CONTRACTOR. ALL CONDUITS THROUGH WALLS SHALL BE GROUTED OR SEALED INTO OPENINGS.
- ALL MATERIALS USED TO SEAL PENETRATIONS OF FIRE RATED WALLS AND FLOORS SHALL BE TESTED AND CERTIFIED AS A SYSTEM PER ASTM E814 STANDARDS FOR FIRE TESTS OF THROUGH-PENETRATION FIRESTOPS. SEE SPECIFICATION SECTION 28 05 03 FOR MORE INFORMATION.
- CONTRACTOR SHALL REMOVE AND REINSTALL ALL CEILING TILES AND CEILINGS REQUIRED FOR THE EXECUTION OF ELECTRICAL WORK. CONTRACTOR SHALL REPLACE CEILING TILES AND GYP CEILING WITH IDENTICAL MATERIAL WHERE DAMAGED BY THIS CONTRACTOR.
- PROVIDE PROVISIONS TO RE-SUPPORT ALL EXISTING CONDUITS AND JUNCTION BOXES ABOVE THE CEILING THAT ARE NOT CODE COMPLIANT IN AREAS OF CONSTRUCTION. AREAS UNDER CONSTRUCTION ARE DEFINED BY NOT HAVING SHADING. PROVIDE JUNCTION BOX COVERS ON EXISTING JUNCTION BOXES WHERE MISSING. PROVIDE COVERS FOR ALL JUNCTION BOXES THAT HAVE KNOCKOUTS NOT UTILIZED. CONTRACTOR SHALL ADHERE TO SPECIFICATION SECTION 28 05 33 FOR SUPPORTING OF CONDUITS.
- PATCHING AND RESTORING COMPONENTS IN EXISTING CONDITIONS INCLUDE PAINTING.

FIRE/SMOKE BARRIER DESIGNATIONS

THE SYMBOLS SHOWN ARE FOR THE CONVENIENCE OF THE CONTRACTOR. THE CONTRACTOR SHALL VERIFY RATINGS AND FURNISH ALL MATERIALS REQUIRED TO COMPLY WITH THOSE RATINGS WHETHER SHOWN OR NOT.
 ALL FLOOR ASSEMBLIES SHALL BE DESIGNATED AS 1 1/2 HOUR FIRE BARRIER, UNLESS NOTED OTHERWISE ON THE PLANS.

1 HOUR FIRE BARRIER	-----
2 HOUR FIRE BARRIER	-----



ENGINEERING CONSULTANTS
 Experience you can build on™
 1100 WARRENVILLE ROAD, SUITE 400W
 NAPERVILLE, IL 60563
 630.527.2320
 FAX: 630.527.2321
 www.kjw.com

STRUCTURAL | MECHANICAL | ELECTRICAL
 TECHNOLOGY | MEDICAL EQUIPMENT SOLUTIONS

**JOLIET JUNIOR COLLEGE
 DATA CENTER COOLING REQUIREMENTS
 1215 HOUBOLT ROAD
 JOLIET, ILLINOIS 60431-8938**

NO.	DATE	REVISION DESCRIPTION

KJW ENGINEERING RESERVES PROPRIETARY RIGHTS, INCLUDING COPYRIGHTS, TO THIS DRAWING AND THE DATA SHOWN THEREON. SUCH DRAWING AND/OR DATA ARE THE EXCLUSIVE PROPERTY OF KJW ENGINEERING AND SHALL NOT BE USED OR REPRODUCED FOR ANY OTHER PROJECT WITHOUT THE EXPRESS WRITTEN APPROVAL AND PARTICIPATION OF KJW ENGINEERING.
 © 2011 KJW, P.C.
 Illinois Design Firm Registration #164-600971

REFERENCE SCALE IN INCHES
 0 1 2

DESIGNED BY: ALG/HP DRAWN BY: HP CHECKED BY: TB

PROJECT NUMBER: 11.0435.00 DATE: 8/30/11

SHEET DESCRIPTION: ELECTRICAL COVER SHEET

SHEET NUMBER: 1

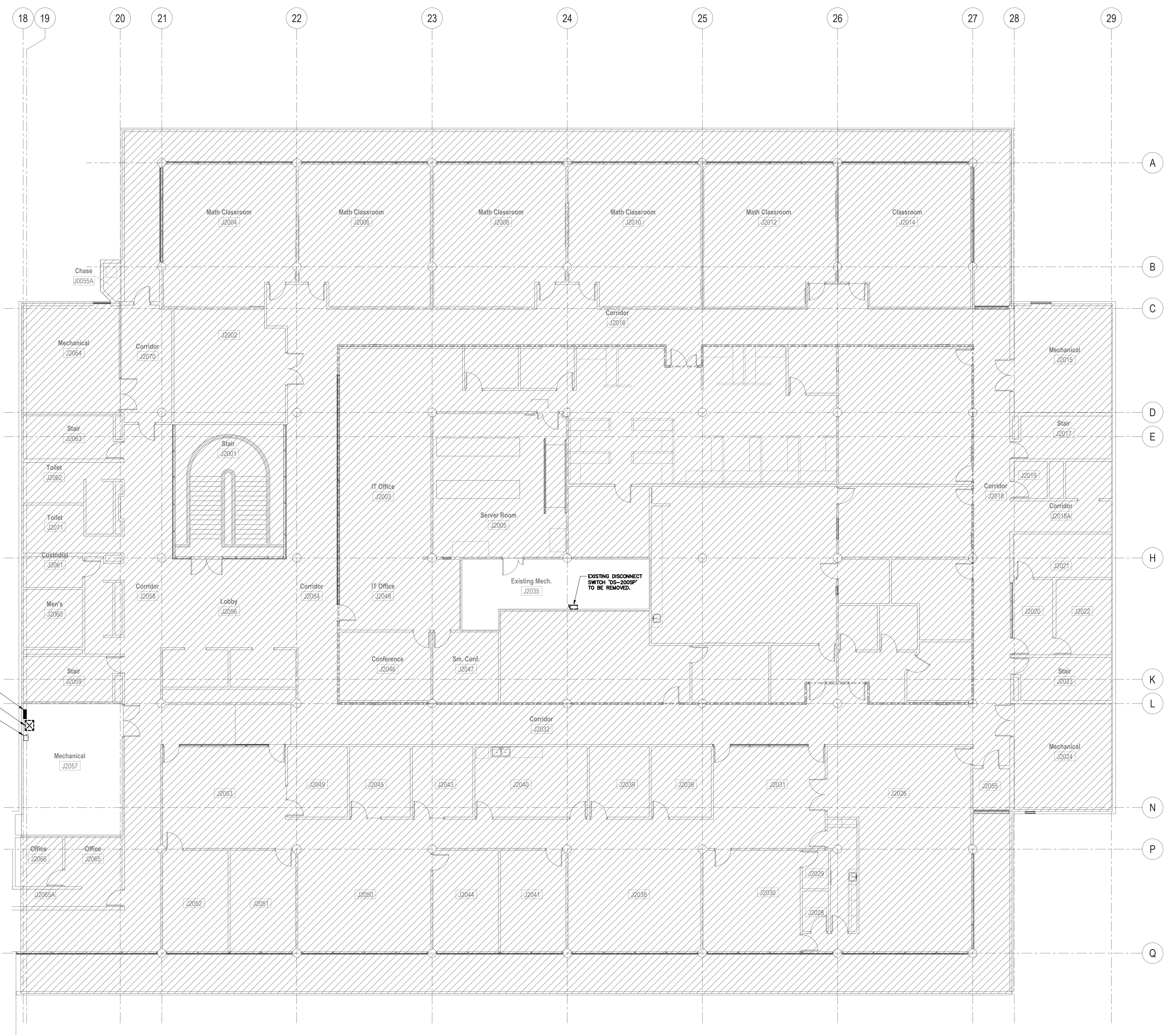
E-000
 Issued for Bid

GENERAL SHEET NOTES

- REFER TO SHEET E-000 FOR ELECTRICAL DEMOLITION SYMBOLS LIST AND ELECTRICAL DEMOLITION NOTES.
- GYPSONUM CEILING REMOVAL FOR CONDUIT ROUTING AND INSTALLATION SHALL BE PERFORMED AS REQUIRED. PATCH AND REPAIR CEILING AS NECESSARY TO MATCH EXISTING.

K&W ENGINEERING CONSULTANTS
 Experience you can build on™
 1100 WARRENVILLE ROAD, SUITE 400W
 NAPERVILLE, IL 60563
 630.527.2320
 FAX: 630.527.2321
 www.kw.com

STRUCTURAL | MECHANICAL | ELECTRICAL
 TECHNOLOGY | MEDICAL EQUIPMENT SOLUTIONS



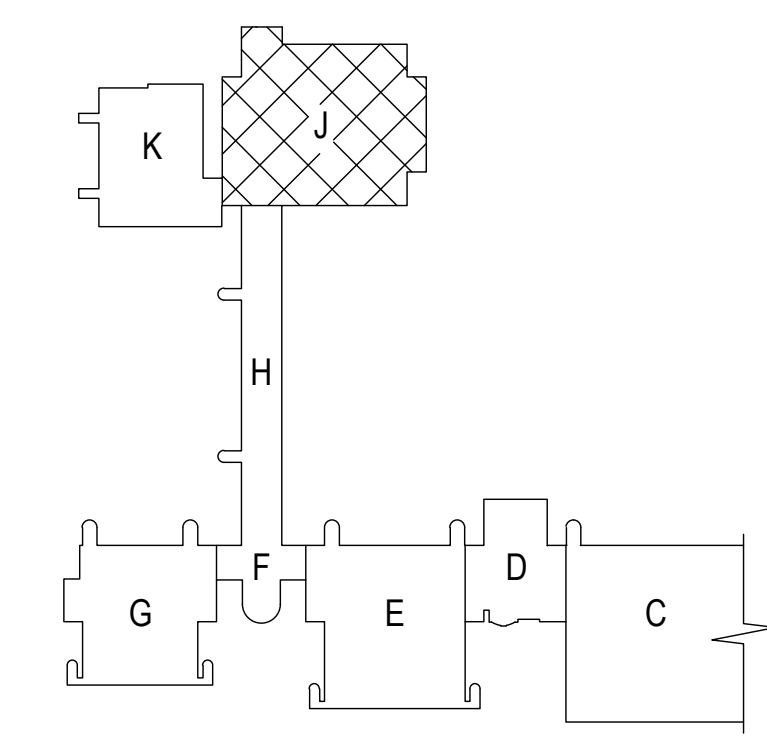
EXISTING (STAND-BY) PANEL 'MDP-2' TO BE REMOVED.
 EXISTING (STAND-BY) TRANSFORMER 'T-75SP' TO BE REMOVED.
 EXISTING (STAND-BY) DISCONNECT SWITCH 'DS-0P' TO REMAIN.

JOLIET JUNIOR COLLEGE
DATA CENTER COOLING REQUIREMENTS
 1215 HOUBOLT ROAD
 JOLIET, ILLINOIS 60431-8938

K:\11\11\04\35\00\AutoCAD 2009\LE-202.dwg 1/8" = 1'-0" Tuesday, August 30, 2011 - 3:35pm By: pmp

1 SERVER ROOM DEMOLITION PLAN - POWER
 SCALE: 1/8"=1'-0"

CUTTING, CORING, OR DRILLING THROUGH EXISTING POST-TENSIONED CONCRETE BEAMS OR SUPPORTED SLABS IS STRICTLY PROHIBITED WITHOUT WRITTEN PERMISSION OF THE CONSTRUCTION MANAGER. NONDESTRUCTIVE TESTING TO DETERMINE THE LOCATION OF EXISTING POST-TENSIONING CABLES SUCH AS X-RAY OR GROUND PENETRATING RADAR SHALL BE PROVIDED BY THE CONTRACTOR PRIOR TO STARTING THE WORK.



NO.	DATE	REVISION DESCRIPTION

DESIGNED BY: ALG/HP DRAWN BY: HP CHECKED BY: TB

PROJECT NUMBER: 11.0435.00 DATE: 8/30/11


SHEET DESCRIPTION: SERVER ROOM DEMOLITION PLAN - POWER

SHEET NUMBER: **E-202**

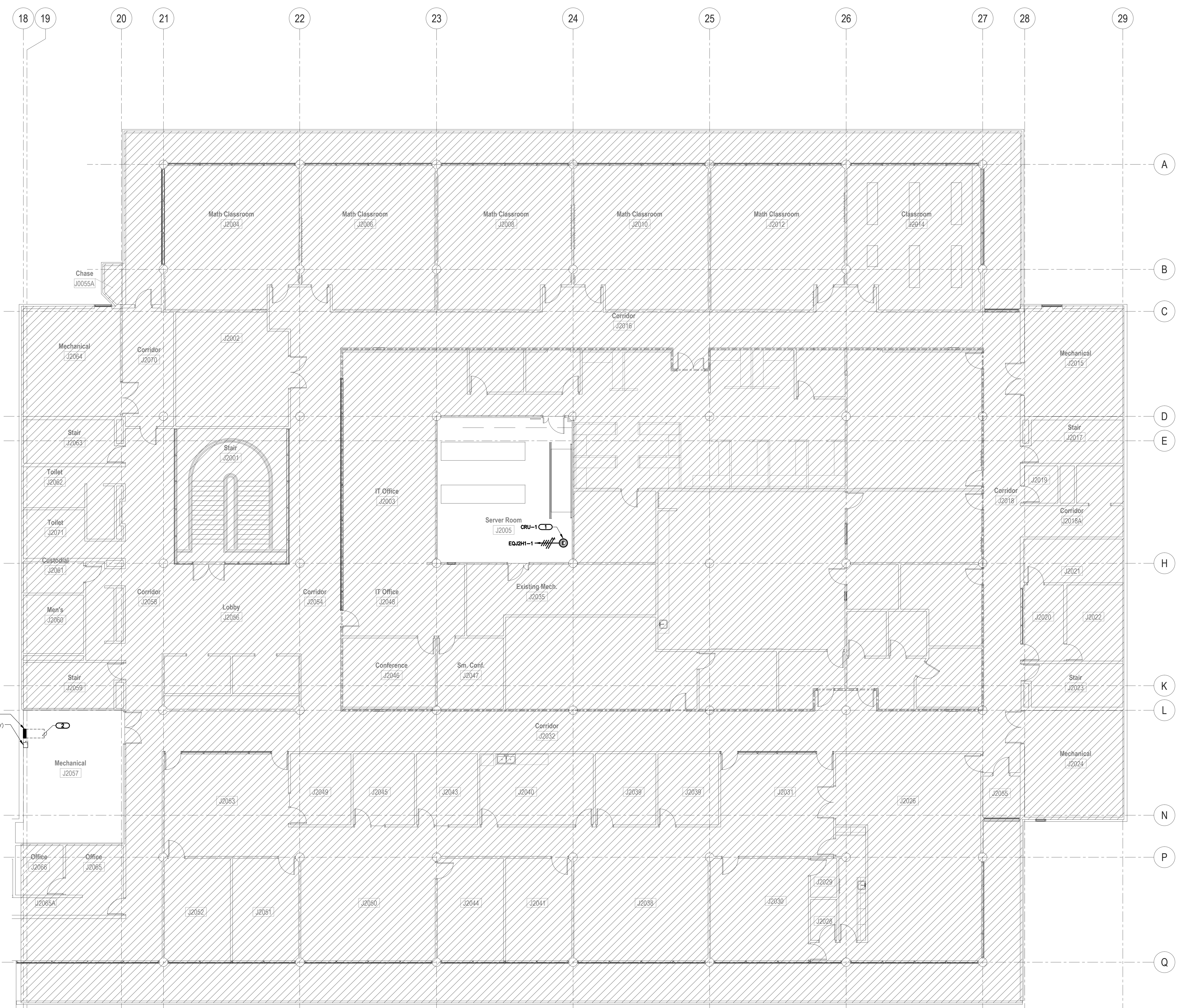
Issued for Bid

GENERAL SHEET NOTES

- REFER TO SHEET E-000 FOR GENERAL NOTES AND ELECTRICAL INSTALLATION NOTES.
- REFER TO SHEET E-500 FOR GENERAL ELECTRICAL EQUIPMENT AND PANELBOARD SCHEDULES.
- SEAL ALL CONDUIT PENETRATIONS AND MAINTAIN ALL FIRE RATINGS. REPAIR ALL WALLS AND SURFACES TO MATCH EXISTING CONDITIONS.
- GYP/SIM CEILING REMOVAL FOR CONDUIT ROUTING AND INSTALLATION SHALL BE PERFORMED AS REQUIRED. PATCH AND REPAIR CEILINGS AS NECESSARY TO MATCH EXISTING.

KEYNOTES 

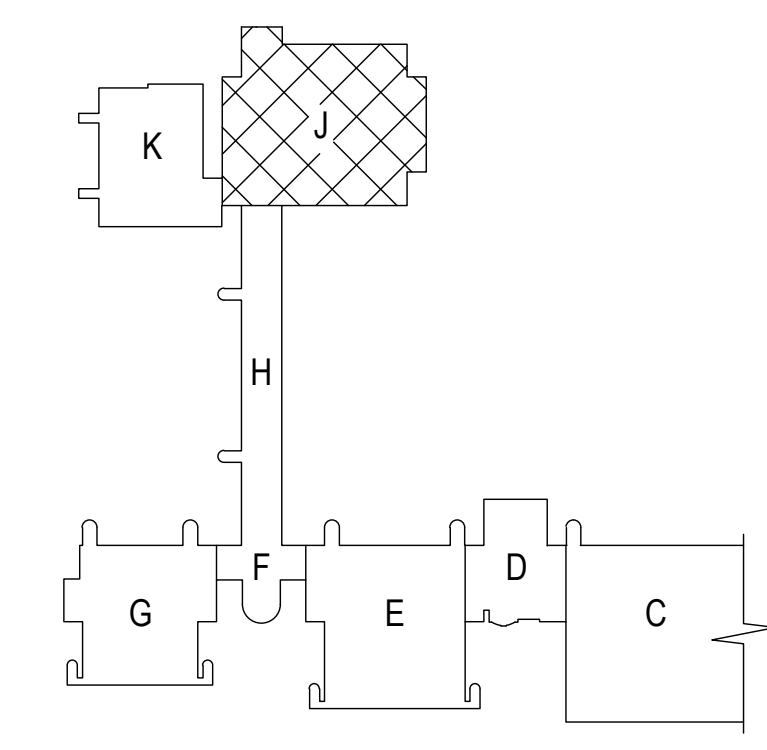
- DISCONNECT SWITCH PROVIDED BY MANUFACTURER. WIRED BY E.C.
- REFER TO 1/E-300 FOR REQUIRED EQUIPMENT CLEARANCES. COORDINATE INSTALLATION WITH EQUIPMENT PIPING AND DUCT WORK.



PANEL "EQ2H1"
 EXISTING (STAND-BY) DISCONNECT SWITCH "DS-DP"

1 SERVER ROOM PLAN - POWER
 SCALE: 1/8"=1'-0"

CUTTING, CORING, OR DRILLING THROUGH EXISTING POST-TENSIONED CONCRETE BEAMS OR SUPPORTED SLABS IS STRICTLY PROHIBITED WITHOUT WRITTEN PERMISSION OF THE CONSTRUCTION MANAGER. NONDESTRUCTIVE TESTING TO DETERMINE THE LOCATION OF EXISTING POST-TENSIONING CABLES SUCH AS X-RAY OR GROUND PENETRATING RADAR SHALL BE PROVIDED BY THE CONTRACTOR PRIOR TO STARTING THE WORK.



Keyplan

**JOLIET JUNIOR COLLEGE
 DATA CENTER COOLING REQUIREMENTS
 1215 HOUBOLT ROAD
 JOLIET, ILLINOIS 60431-8938**

NO.	DATE	REVISION DESCRIPTION

DESIGNED BY: **ALG/HP** DRAWN BY: **HP** CHECKED BY: **TB**

PROJECT NUMBER: **11.0435.00** DATE: **8/30/11**

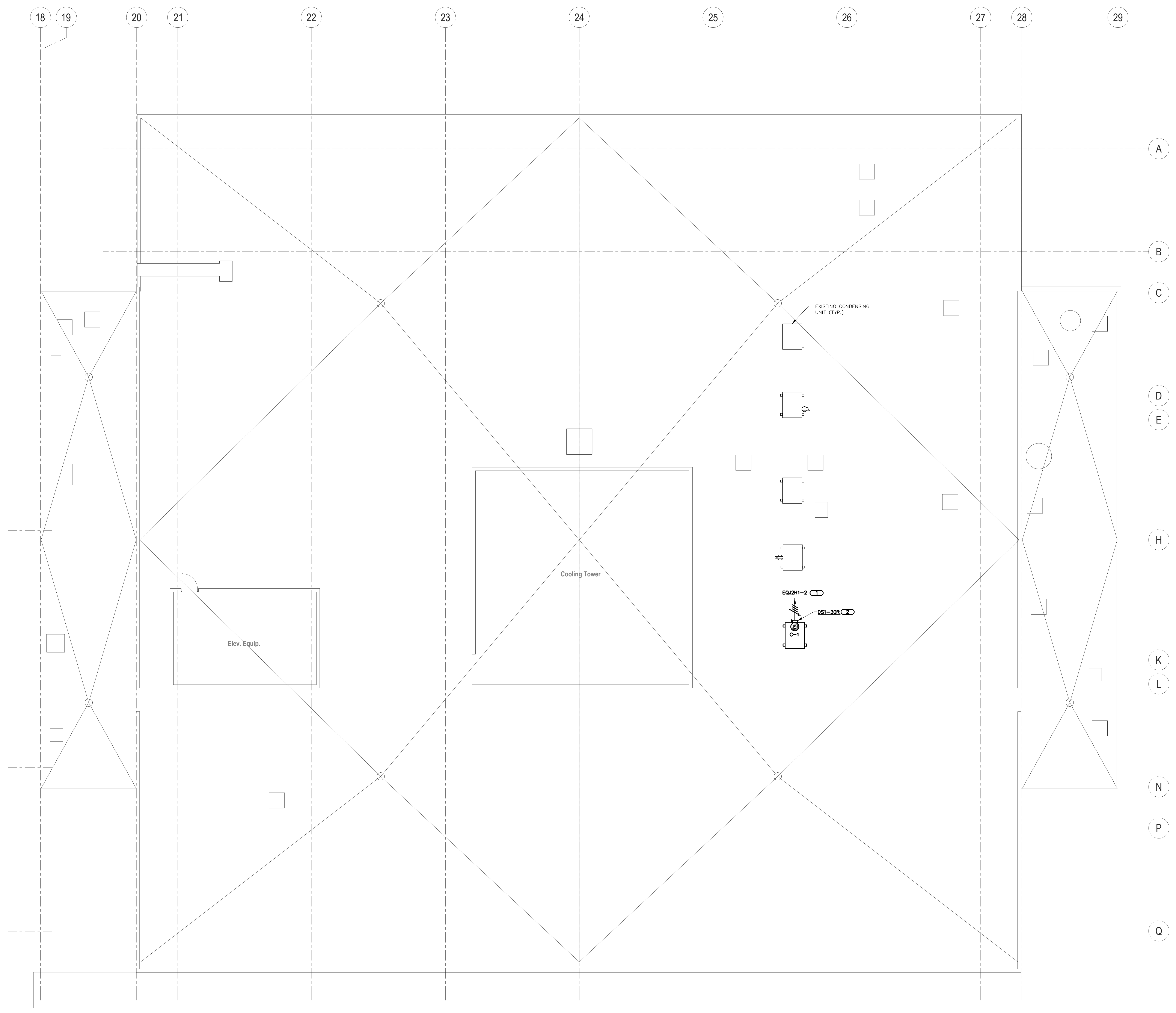
SHEET DESCRIPTION: **SERVER ROOM PLAN - POWER**

SHEET NUMBER: **E-212**

Issued for Bid

K:\11\11.04.35.00\AutoCAD 2009\LE-212.dwg 1/8" = 1'-0" Tuesday, August 30, 2011 - 3:35pm By: pjmp

K:\11\11.04.35.00\AutoCAD 2009\11.04.35.00\11.04.35.00.dwg 1/8" = 1'-0" Tuesday, August 30, 2011 - 3:35pm By: pjmp



GENERAL SHEET NOTES

- REFER TO SHEET E-000 FOR GENERAL NOTES AND ELECTRICAL INSTALLATION NOTES.
- REFER TO SHEET E-500 FOR DISCONNECT AND STARTER, GENERAL ELECTRICAL EQUIPMENT AND PANELBOARD SCHEDULES.
- REFER TO SHEET E-212 FOR PANEL "EQJ2H1" LOCATION.

KEYNOTES

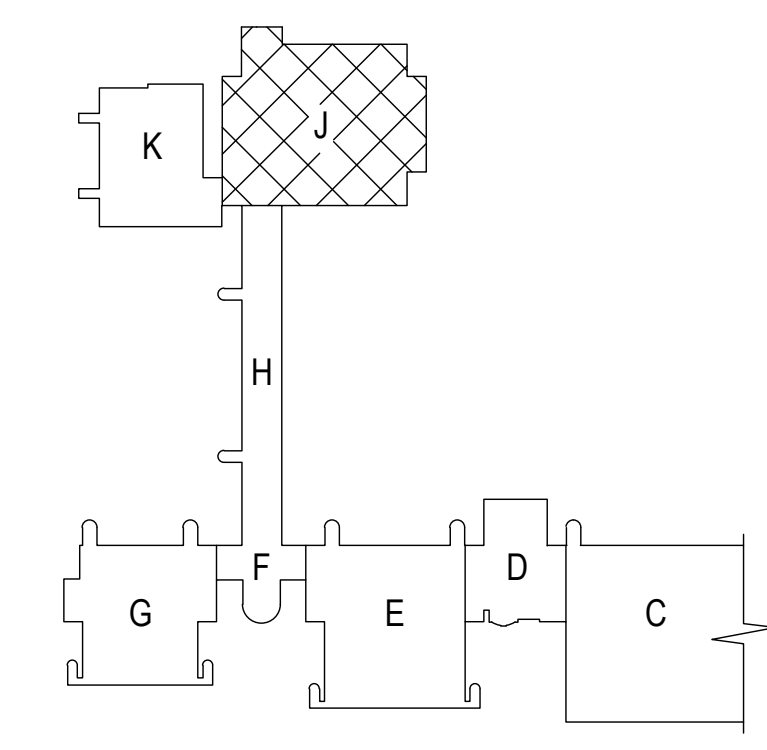
- SEAL ALL CONDUIT PENETRATIONS AND MAINTAIN ALL FIRE RATINGS AFTER CONDUIT INSTALLATION. REFER TO 2/E-500 FOR CONDUIT ROOF PENETRATION DETAIL.
- MOUNT DISCONNECT SWITCH ON EQUIPMENT. COORDINATE LOCATION WITH M.C.

KJW ENGINEERING CONSULTANTS
 Experience you can build on™
 1100 WARRENVILLE ROAD, SUITE 400W
 NAPERVILLE, IL 60563
 630.527.2320
 FAX: 630.527.2321
 www.kjw.com
 STRUCTURAL | MECHANICAL | ELECTRICAL
 TECHNOLOGY | MEDICAL EQUIPMENT SOLUTIONS

JOLIET JUNIOR COLLEGE
DATA CENTER COOLING REQUIREMENTS
 1215 HOUBOLT ROAD
 JOLIET, ILLINOIS 60431-8938

1 ROOF PLAN - POWER
 SCALE: 1/8"=1'-0"

CUTTING, CORING, OR DRILLING THROUGH EXISTING POST-TENSIONED CONCRETE BEAMS OR SUPPORTED SLABS IS STRICTLY PROHIBITED WITHOUT WRITTEN PERMISSION OF THE CONSTRUCTION MANAGER. NONDESTRUCTIVE TESTING TO DETERMINE THE LOCATION OF EXISTING POST-TENSIONING CABLES SUCH AS X-RAY OR GROUND PENETRATING RADAR SHALL BE PROVIDED BY THE CONTRACTOR PRIOR TO STARTING THE WORK.



Keyplan

NO.	DATE	REVISION DESCRIPTION

KJW ENGINEERING RESERVES PROPRIETARY RIGHTS, INCLUDING COPYRIGHTS TO THIS DRAWING AND THE DATA THEREON. SAID DRAWING AND/OR DATA ARE THE EXCLUSIVE PROPERTY OF KJW ENGINEERING AND SHALL NOT BE USED OR REPRODUCED FOR ANY OTHER PROJECT WITHOUT THE EXPRESS WRITTEN APPROVAL AND PARTICIPATION OF KJW ENGINEERING. © 2011 KJW, P.C. Illinois Design Firm Registration #184-600973

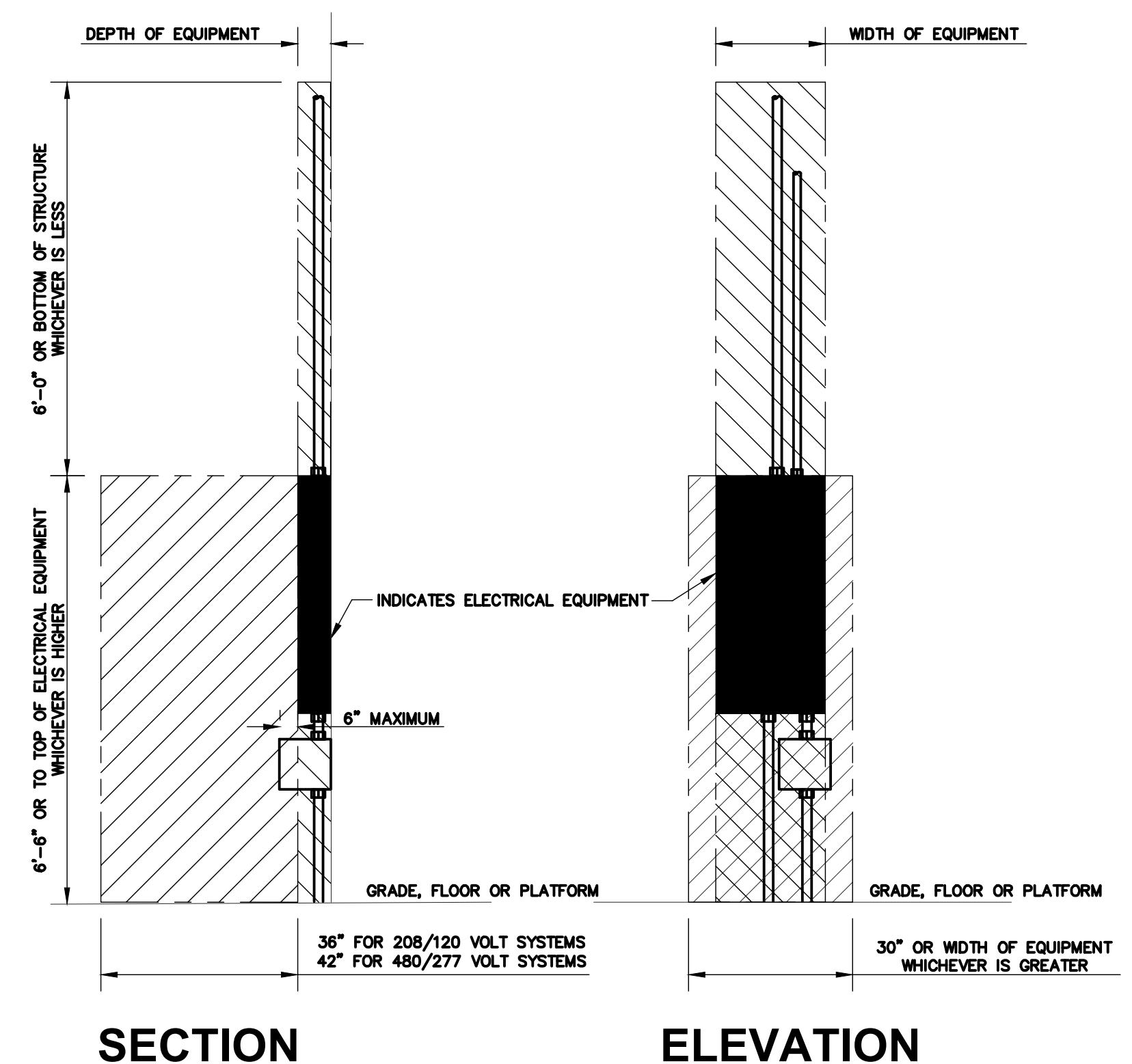
REFERENCE SCALE IN INCHES
 0 1 2

DESIGNED BY	DRAWN BY	CHECKED BY
ALG/HP	HP	TB

PROJECT NUMBER	DATE
11.0435.00	8/30/11

SHEET DESCRIPTION
ROOF PLAN - POWER

SHEET NUMBER
E-215
 Issued for Bid

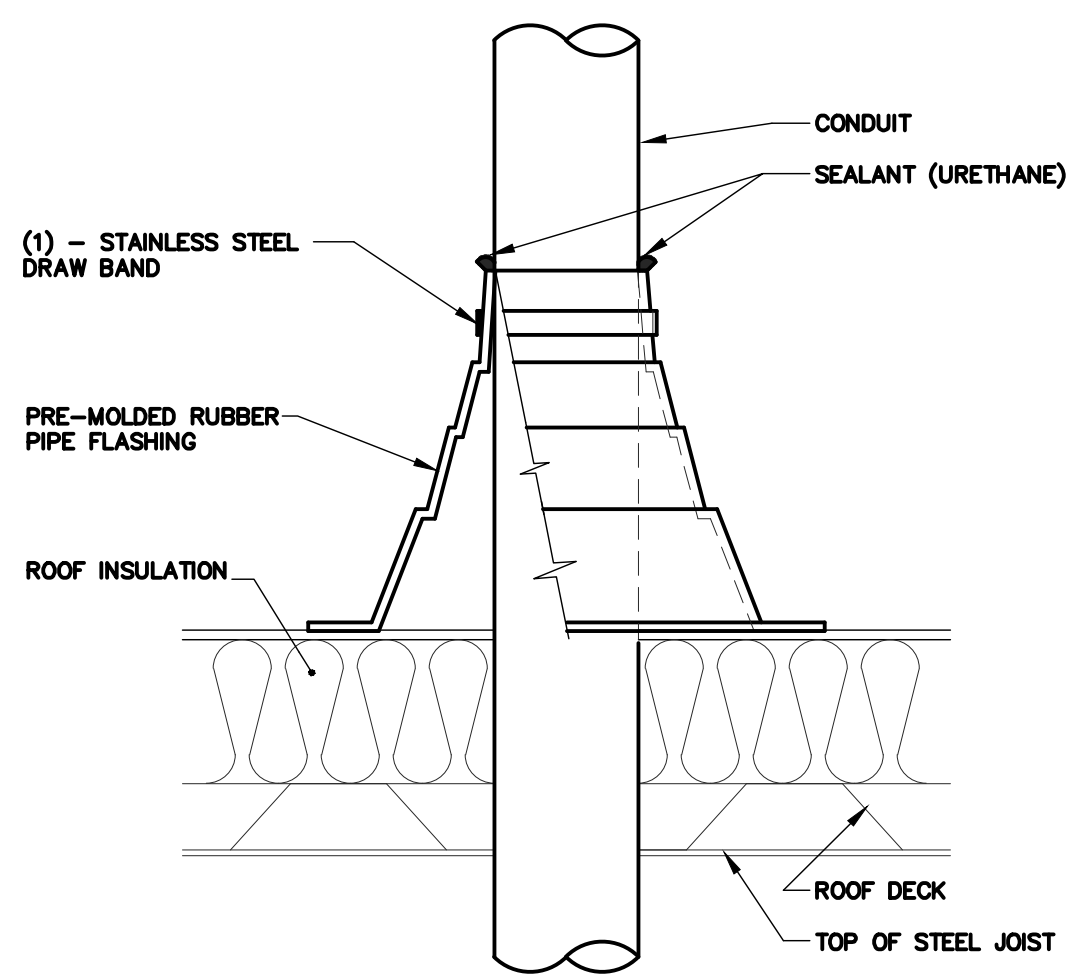


SECTION **ELEVATION**

INDICATES WORKING SPACE REQUIRED PER 2002 NEC 110-26(g). ELECTRICAL EQUIPMENT LOCATED ABOVE OR BELOW OTHER RELATED EQUIPMENT SHALL NOT EXTEND MORE THAN 6" IN FRONT OF SUCH EQUIPMENT.

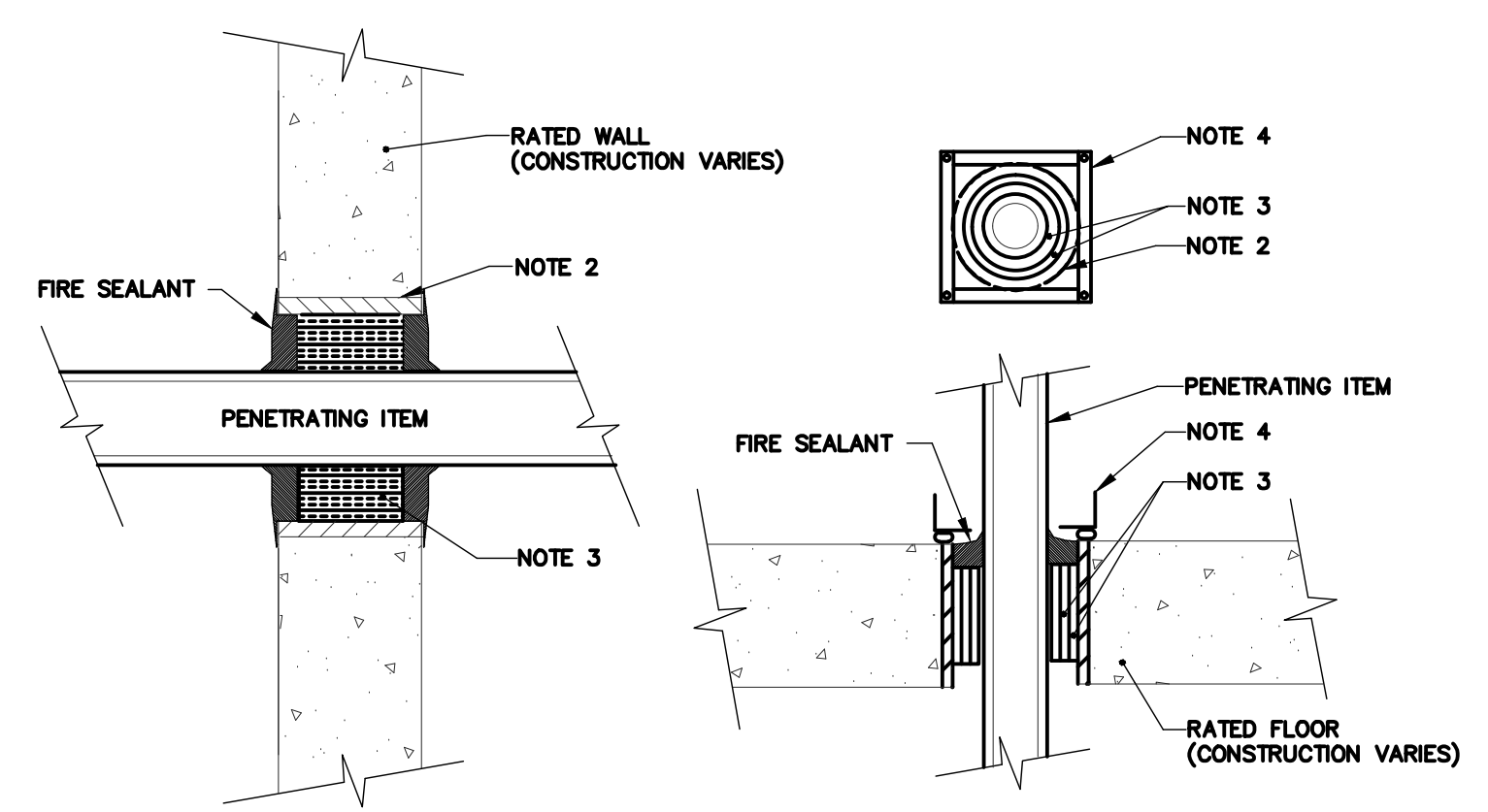
INDICATES DEDICATED ELECTRICAL SPACE REQUIRED PER 2002 NEC 110-26(f).

1 REQUIRED EQUIPMENT CLEARANCES
 NO SCALE



2 CONDUIT ROOF PENETRATION DETAIL
 NO SCALE

- NOTES:
- CONDUIT SHALL BE SUPPORTED WITHIN 24 INCHES ABOVE AND BELOW EXISTING ROOF.
 - MAINTAIN EXISTING ROOF WARRANTY.



3 RATED FIRE BARRIER PENETRATION
 NO SCALE

- NOTES:
- THIS GENERAL DETAIL APPLIES TO ALL ITEMS PENETRATING FIRE RATED WALLS OR FLOORS. THE INTENT IS TO MAINTAIN THE FIRE RATING AND TO ALLOW LONGITUDINAL MOVEMENT. REFER TO SPECIFICATION SECTION 28 05 03 FOR SELECTION OF THROUGH PENETRATION FIRE STOPPING.
 - SCHEDULE 5 PIPE SLEEVE EMBEDDED IN WALL OR FLOOR OR SMOOTH CORE DRILL. EACH CONTRACTOR FURNISHES SLEEVE TO G.C., COORDINATES SLEEVE LOCATIONS AND DEBERS SLEEVE. G.C. BUILDS SLEEVE INTO WALL OR FLOOR ALLOWING NO GAP AROUND SLEEVE. IF SLEEVE IS NOT PROVIDED WHEN WALL OR FLOOR IS BUILT, CONTRACTOR SHALL INSTALL SLEEVE. SLEEVE SIZE SHALL ALLOW ANNULAR SPACE REQUIRED BY THE SELECTED FIRE STOP SYSTEM.
 - INSTALL BACKING MATERIAL, SUCH AS MINERAL WOOL SAFING, AS REQUIRED FOR FIRE STOP SYSTEM. INSTALL IN ACCORDANCE WITH FIRE STOP SYSTEM APPLICATION LISTING. SECURE TO WALL OR FLOOR TO ALLOW LONGITUDINAL MOVEMENT OF PENETRATING ITEM WITHOUT MOVEMENT OF FIRE BARRIER.
 - WATER-TIGHT WELDED 1"x1" 20 GAUGE MINIMUM GALVANIZED SHEET METAL ANGLE FRAME, BY CONTRACTOR IN EQUIPMENT ROOMS FOR WATER STOP. PLACE A BEAD OF WATERPROOF SEALANT BETWEEN FLOOR AND BOTTOM OF ANGLE FRAME. SECURE TO FLOOR WITH MASONRY ANCHORS IN CORNERS AND ON 12" MAXIMUM CENTERS. MULTIPLE PENETRATING ITEMS MAY BE ENCLOSED IN ONE FRAME.

JOLIET JUNIOR COLLEGE
DATA CENTER COOLING REQUIREMENTS
1215 HOUBOLT ROAD
JOLIET, ILLINOIS 60431-8938

NO.	DATE	REVISION DESCRIPTION

KJW ENGINEERING RESERVES PROPRIETARY RIGHTS, INCLUDING COPYRIGHTS, TO THIS DRAWING AND THE DATA SHOWN THEREON. SAID DRAWING AND THE DATA ARE THE EXCLUSIVE PROPERTY OF KJW ENGINEERING AND SHALL NOT BE USED OR REPRODUCED FOR ANY OTHER PROJECT WITHOUT THE EXPRESS WRITTEN APPROVAL AND PARTICIPATION OF KJW ENGINEERING.
 © 2011 KJW, P.C.
 Illinois Design Firm Registration #164-600971

REFERENCE SCALE IN INCHES
 0 1 2

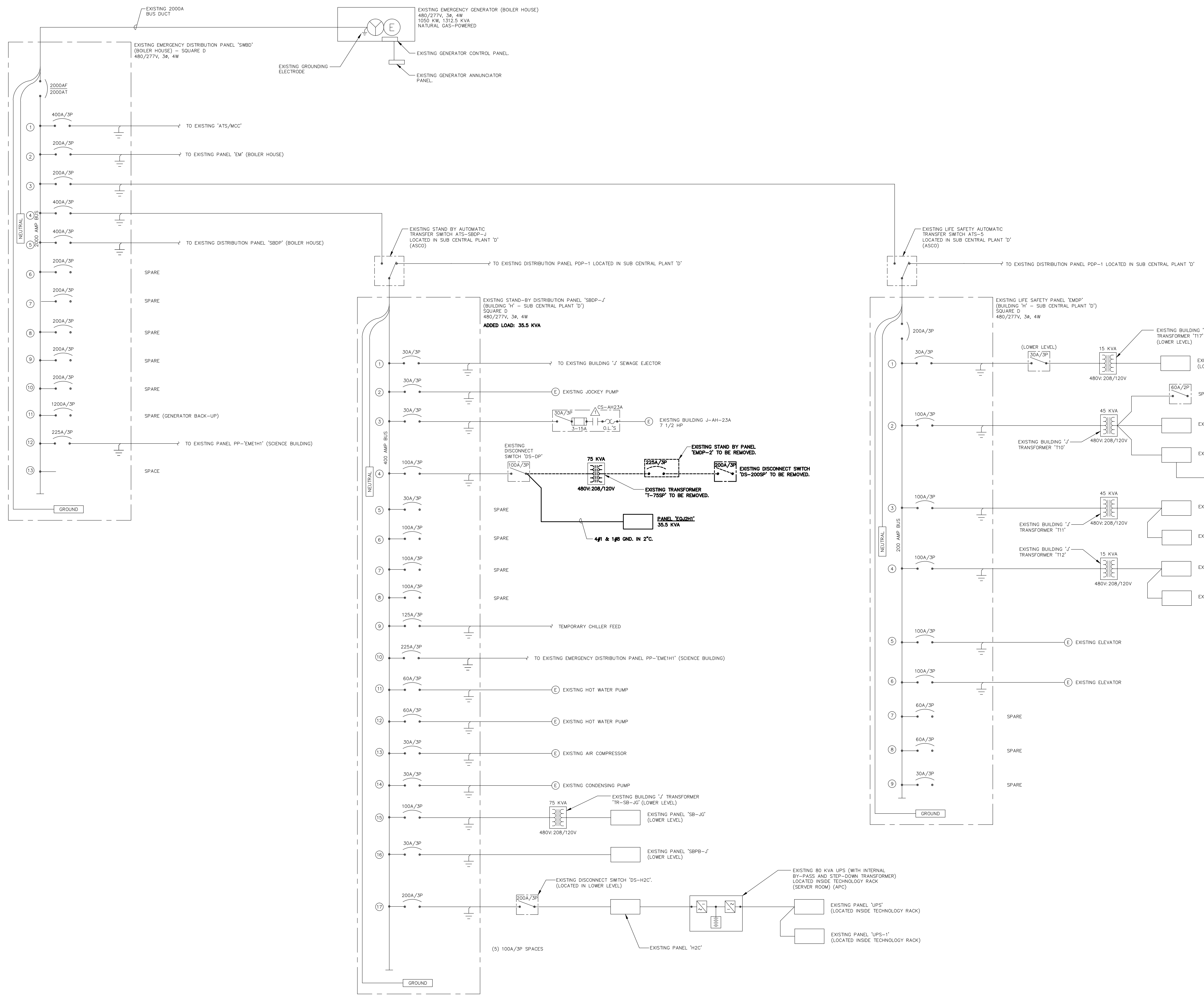
DESIGNED BY	DRAWN BY	CHECKED BY
ALG/HP	HP	TB

PROJECT NUMBER	DATE
11.0435.00	8/30/11

SHEET DESCRIPTION
ELECTRICAL DETAILS

SHEET NUMBER
E-300
 Issued for Bid

K:\AW # 11-04-35-00 - JJC Server Room Expansion - K:\1\11-04-35-00\AutoCAD 2009\LE-400.dwg NONE Tuesday, August 30, 2011 - 3:35pm By: p1m/p



GENERAL SHEET NOTES

1. REFER TO E-000 FOR ELECTRICAL DEMOLITION NOTES, GENERAL ELECTRICAL NOTES, ELECTRICAL INSTALLATION NOTES AND ONE LINE DIAGRAM NOTES.
2. REFER TO SHEET E-500 FOR GENERAL ELECTRICAL EQUIPMENT AND PANELBOARD SCHEDULES.
3. THE ONE LINE DIAGRAM SHOWN IS INFORMATION OBTAINED FROM A COMBINATION OF SITE VISITS AS WELL AS EXISTING DRAWINGS PROVIDED BY JOLIET JUNIOR COLLEGE (JJC) ON OCTOBER 8, 2010.

KJW ENGINEERING CONSULTANTS
 Experience you can build on™
 1100 WARRENVILLE ROAD, SUITE 400W
 NAPERVILLE, IL 60563
 630.527.2320
 FAX: 630.527.2321
 www.kjw.com

STRUCTURAL | MECHANICAL | ELECTRICAL
TECHNOLOGY | MEDICAL EQUIPMENT SOLUTIONS

JOLIET JUNIOR COLLEGE
DATA CENTER COOLING REQUIREMENTS
 1215 HOUBOLT ROAD
 JOLIET, ILLINOIS 60431-8938

1 ELECTRICAL ONE LINE DIAGRAM - BUILDING J- EMERGENCY POWER
 NO SCALE

NO.	DATE	REVISION DESCRIPTION

DESIGNED BY: ALG/HP DRAWN BY: HP CHECKED BY: TB

PROJECT NUMBER: 11.0435.00 DATE: 8/30/11

SHEET DESCRIPTION: ELECTRICAL ONE LINE DIAGRAM - EMERGENCY POWER

SHEET NUMBER: 1

E-400
 Issued for Bid

GENERAL ELECTRICAL EQUIPMENT SCHEDULE			
<p>THE SYMBOLS AND THE EQUIPMENT SCHEDULE ARE FOR THE CONVENIENCE OF THE CONTRACTOR. EACH CONTRACTOR SHALL BE RESPONSIBLE FOR VERIFICATION OF QUANTITIES AND SHALL FURNISH ALL MATERIAL REQUIRED, WHETHER SPECIFIED OR NOT, TO PRODUCE A SATISFACTORY WORKING SYSTEM.</p> <p>CATALOG NUMBERS SHALL NOT BE CONSIDERED COMPLETE BUT ARE GIVEN ONLY TO AID THE CONTRACTOR IN THE SEARCH FOR MATERIAL. NO MATERIAL SHALL BE ORDERED BY MANUFACTURER AND CATALOG NUMBERS ONLY. EACH CONTRACTOR SHALL FIRST READ THE COMPLETE DESCRIPTION OF THE MATERIAL ON THESE DRAWINGS AND SPECIFICATIONS. THE FIRST MANUFACTURER LISTED IS THE BASIS OF DESIGN. "STANDARD COLOR" INDICATES FACTORY FINISH AVAILABLE AT NO ADDITIONAL CHARGE.</p>			
ITEM NO.	SYMBOL	DESCRIPTION	APPROVED MANUFACTURERS
1		ELECTRICAL CONNECTION TO EQUIPMENT AND MOTORS, SIZE PER N.E.C. COORDINATE REQUIREMENTS WITH CONTRACTOR FURNISHING EQUIPMENT OR MOTOR. SEE SPECIFICATIONS AND GENERAL INSTALLATION NOTES FOR TERMINATIONS TO MOTORS. SHADING INDICATES CONNECTION TO EMERGENCY POWER.	SEE SPECIFICATIONS
2		PANELBOARD, SURFACE MOUNT, 480/277 VOLT, 3 PHASE, 4 WIRE, S/N/L GROUND BUS, COPPER BUS, BOLT-ON BREAKERS, NEMA 1 ENCLOSURE. SEE SCHEDULES FOR SIZE AND CONFIGURATION, SEE SPECIFICATIONS FOR ADDITIONAL INFORMATION. REFER TO PANEL SCHEDULES FOR APPLICABLE PANELS.	SQUARE D IN CUTLER-HAMMER PRL2 GENERAL ELECTRIC AE

DISCONNECT AND STARTER SCHEDULE																			
STARTER TYPE:					REMARKS:														
FV - FULL VOLTAGE	YD - WYE - DELTA	RE - REVERSING	TW - 2 SPEED, 2 WINDING	SW - 2 SPEED, 1 WINDING	RV - REDUCED VOLTAGE AUTOXFMR	SS - SOLID STATE	MS - MANUAL STARTER	MX - MANUAL SWITCH	FS - FUSED SWITCH	SA - STANDARD ACCESSORIES (INCLUDES * ITEMS)	*CT - CONTROL TRANSFORMER, FUSED 120V	PF - PHASE FAILURE RELAY (6 HP OR GREATER)	TO - MELTING THERMAL OVERLOADS	TS - 2 SPEED SELECTOR SWITCH IN DOOR	GP - GREEN OFF/PILOT LIGHT IN DOOR	FA - 4-CONVERTIBLE AUXILIARY CONTACTS	EL - ELECTRICAL INTERLOCK (2) N.O. & (2) N.C	SS - START STOP PUSHBUTTON IN DOOR	HL - HANDLE PADLOCK HASP ASSEMBLY
NOTE: ALL DISCONNECTS (EXCEPT MANUAL STARTERS) SHALL BE HEAVY DUTY TYPE.																			
ITEM	DISCONNECT TYPE & RATING			VOLTAGE	POLES	STARTER		NEMA ENCLOSURE	REMARKS	APPROVED MANUFACTURERS									
	HEAVY DUTY SWITCH	NON-FUSED	CIRCUIT BREAKER			NEMA SIZE	TYPE												
DS1-30R				600	3			3R		SQUARE D 3110 HJ361RB CUTLER-HAMMER TYPE DH GENERAL ELECTRIC TYPE TH									

PANEL NAME: EQJ2H1									
TYPE: BOLT-ON					CONNECTED 35.5 KVA				
MOUNTING: SURFACE					MAIN: 100A LUGS				
FED FROM: DISTRIBUTION PANEL SBOP-J VIA DS-0P					SOLID NEUTRAL				
SCCR: 14,000					GROUND BUS				
VOLTS: 480Y/277					PHASE: 3				
WIRE: 4									
NOTES:									
NO.	LOAD DESCRIPTION	WIRE SIZE	LOAD KVA	BREAKER AMP	BREAKER P	LOAD KVA	WIRE SIZE	LOAD DESCRIPTION	NO.
1	CRU-1	8	32.0	50	3	15	3	3.5	10
3	-----	--	--	--	--	--	--	-----	4
5	-----	--	--	--	--	--	--	-----	6
7	SPARE			20	1	20	1	SPARE	8
9	SPARE			20	1	20	1	SPARE	10
11	SPARE			20	1	20	1	SPARE	12
13	SPARE			20	1	20	1	SPARE	14
15	SPARE			20	1	20	1	SPARE	16
17	SPARE			20	1	20	1	SPARE	18
19	SPARE			20	1	20	1	SPARE	20
21	SPARE			20	1	20	1	SPARE	22
23	SPARE			20	1	20	1	SPARE	24

NO.	DATE	REVISION DESCRIPTION
<p>KJW ENGINEERING RESERVES PROPRIETARY RIGHTS, INCLUDING COPYRIGHTS, TO THIS DRAWING AND THE DATA SHOWN THEREON. SAID DRAWING AND THE DATA ARE THE EXCLUSIVE PROPERTY OF KJW ENGINEERING AND SHALL NOT BE USED OR REPRODUCED FOR ANY OTHER PROJECT WITHOUT THE EXPRESS WRITTEN APPROVAL AND PARTICIPATION OF KJW ENGINEERING. © 2011 KJW, P.C. Illinois Design Firm Registration #164-600971</p> <p>REFERENCE SCALE IN INCHES</p> <p>0 1 2</p>		
DESIGNED BY	DRAWN BY	CHECKED BY
ALG/HP	HP	TB
PROJECT NUMBER	DATE	
11.0435.00	8/30/11	
SHEET DESCRIPTION		
ELECTRICAL SCHEDULES		
SHEET NUMBER		
E-500		
Issued for Bid		