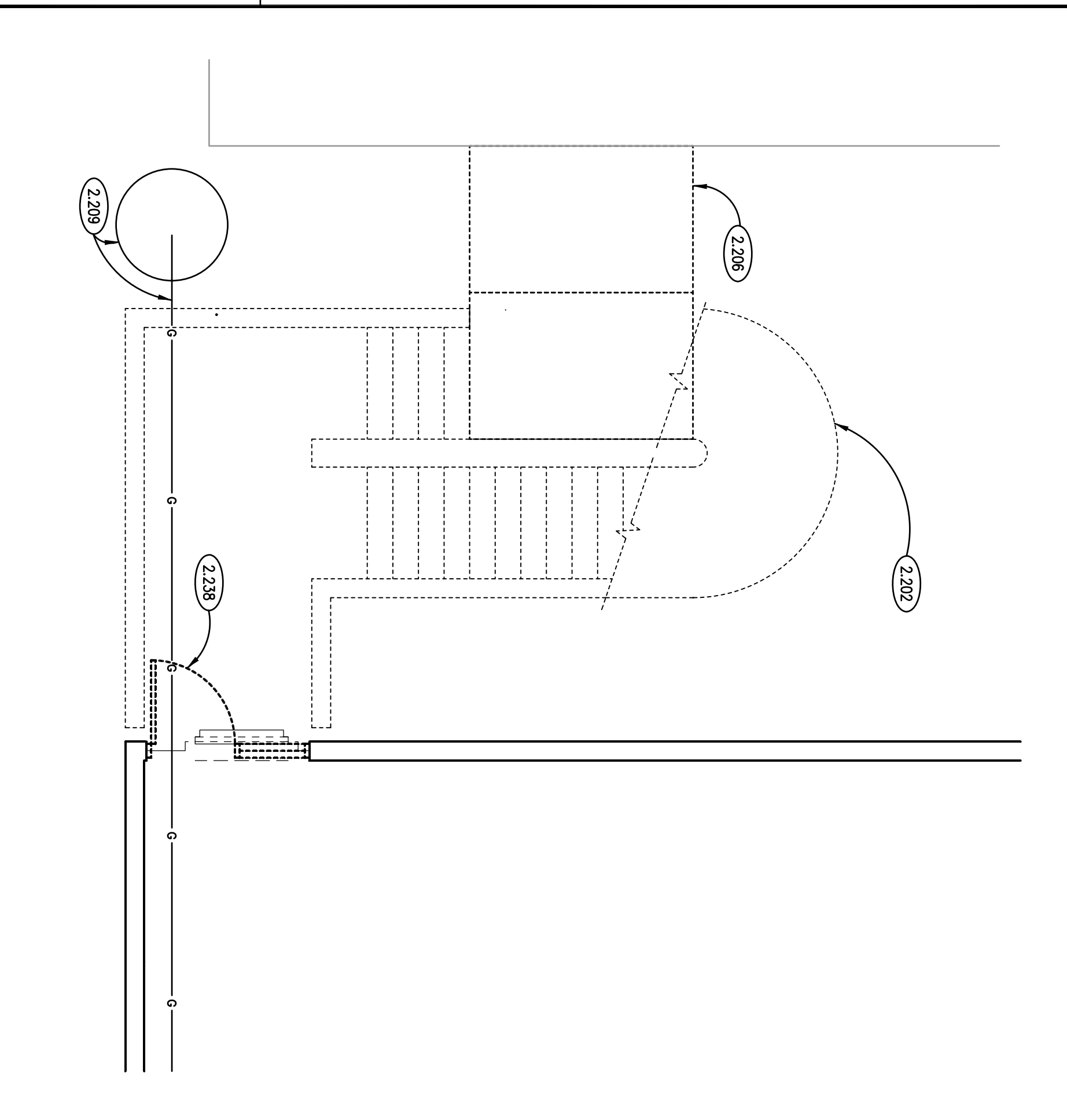
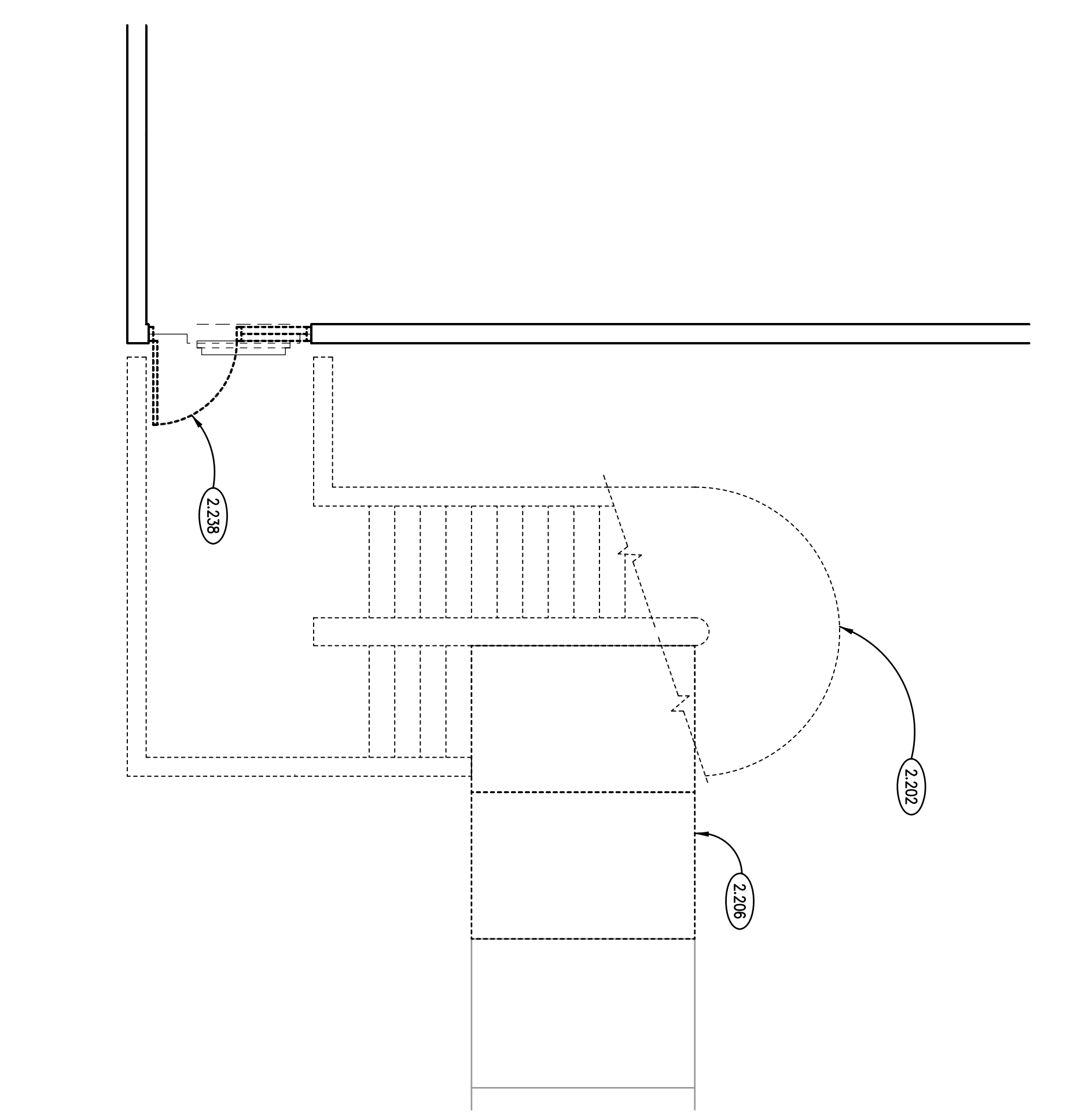


KEYNOTES

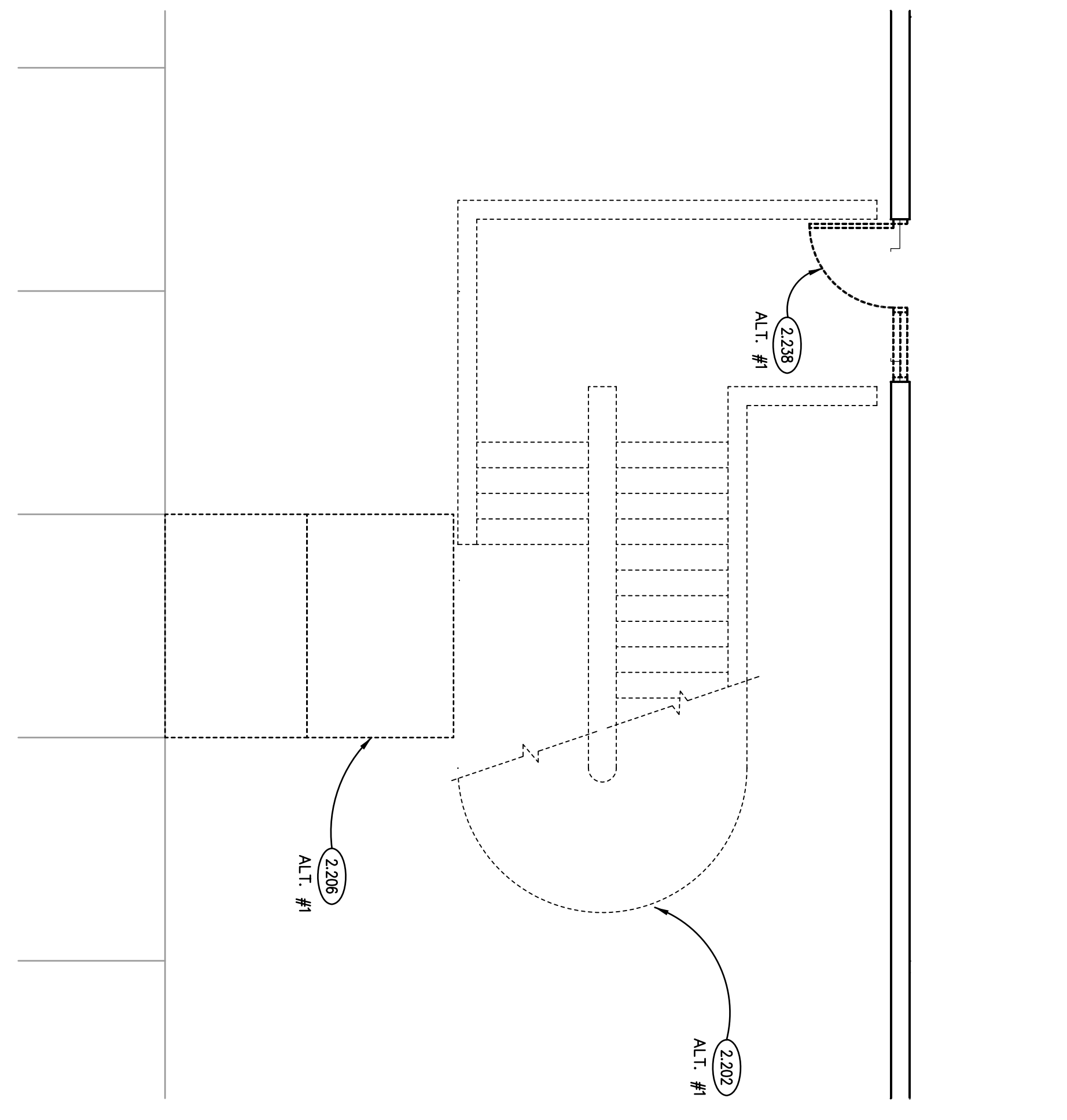
- 2202 DEMOLISH EXISTING CAST-IN-PLACE CONCRETE STAIR SUPERSTRUCTURE AND ALL ASSOCIATED FOUNDATIONS.
- 2208 DEMOLISH EXISTING SITE IMPROVEMENT SECTIONS OF CONCRETE WALK IN ITS ENTIRETY.
- 2209 PROTECT EXISTING GAS MAIN AND VALVE VAULT TO REMAIN. PROTECT AS REQUIRED.
- 2238 DEMOLISH EXISTING EXTERIOR DOOR AND FRAME.



STAIR "E2" DEMOLITION PLAN
SCALE: 1/4" = 1'-0"



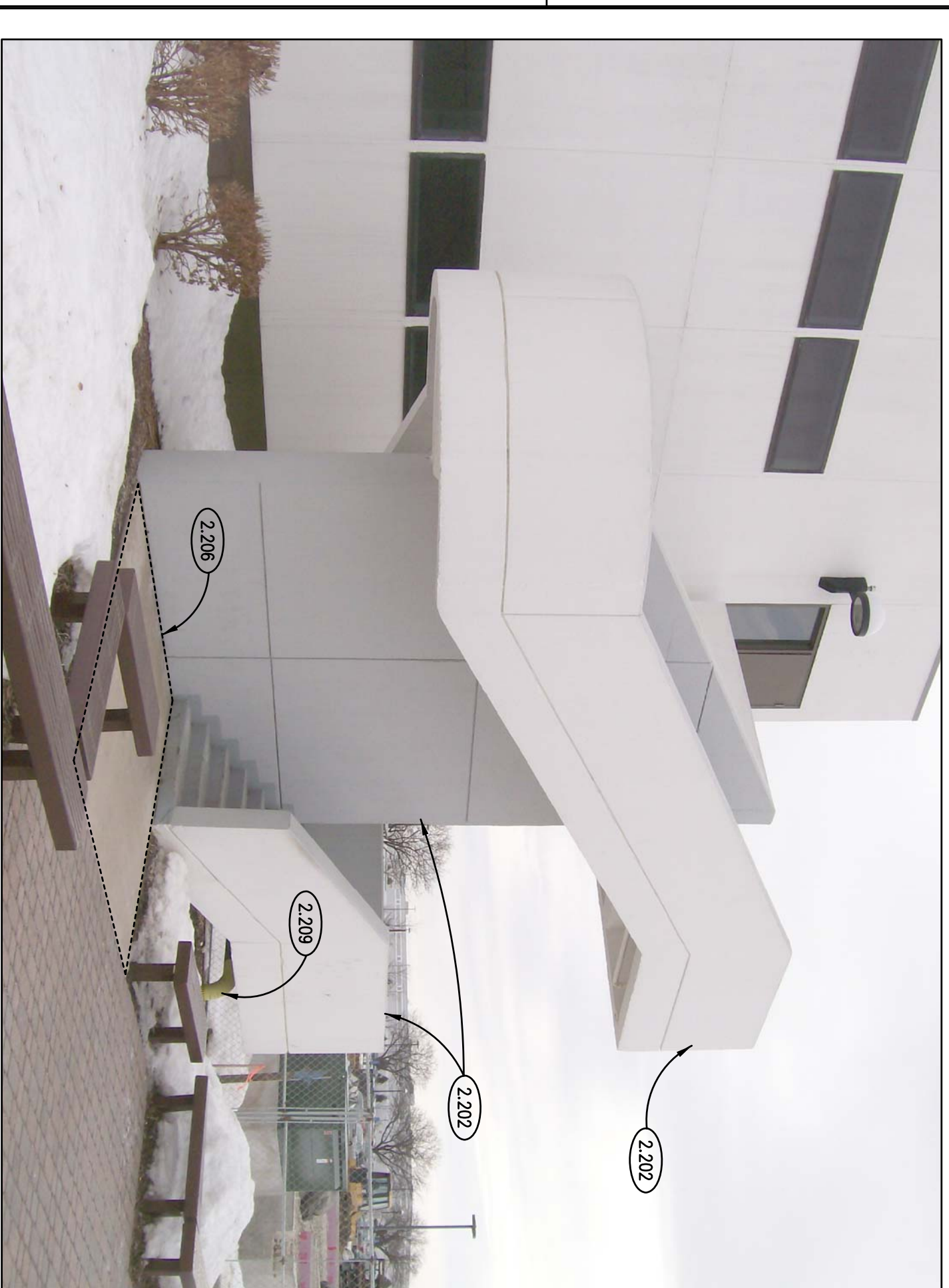
STAIR "E1" DEMOLITION PLAN
SCALE: 1/4" = 1'-0"



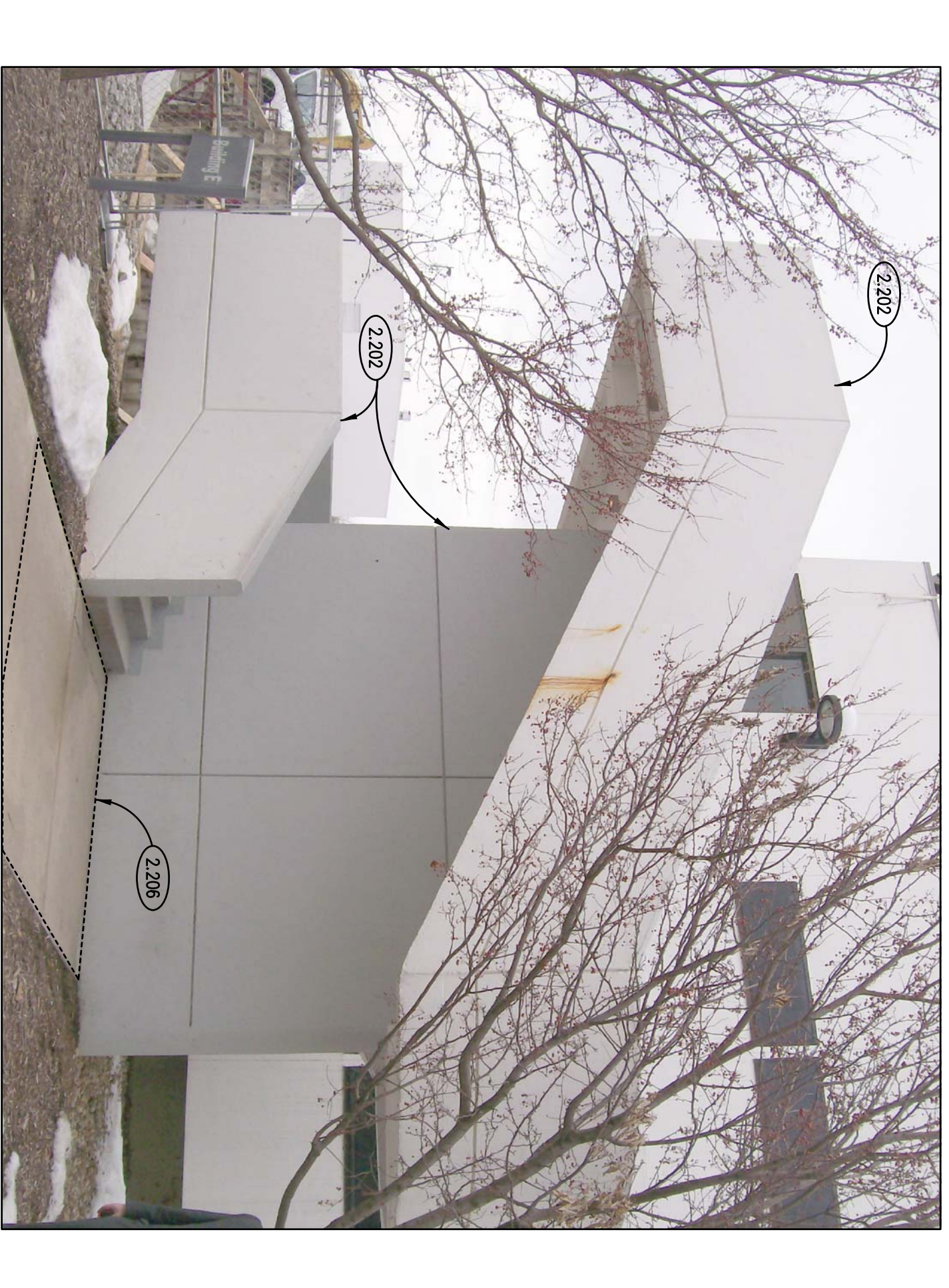
STAIR "A1" DEMOLITION PLAN (ALTERNATE #1)
SCALE: 1/4" = 1'-0"

DEMOLITION NOTES

1. REFER TO DRAWING 0100 FOR PROJECT GENERAL NOTES.
2. ADDITIONAL DEMOLITION/RECONSTRUCTION AND REMOVAL/REPLACEMENT OF ARCHITECTURAL AND STRUCTURAL ELEMENTS IS REQUIRED TO COMPLETE THE WORK OF THIS PROJECT. DEMOLITION/RECONSTRUCTION AND REMOVAL/REPLACEMENT OF ARCHITECTURAL AND STRUCTURAL ELEMENTS AS REQUIRED TO COMPLETE THE WORK SHOWN ON THOSE DRAWINGS.



EXISTING CONDITIONS/ DEMO. PHOTO - STAIR "E2"
SCALE: NO SCALE



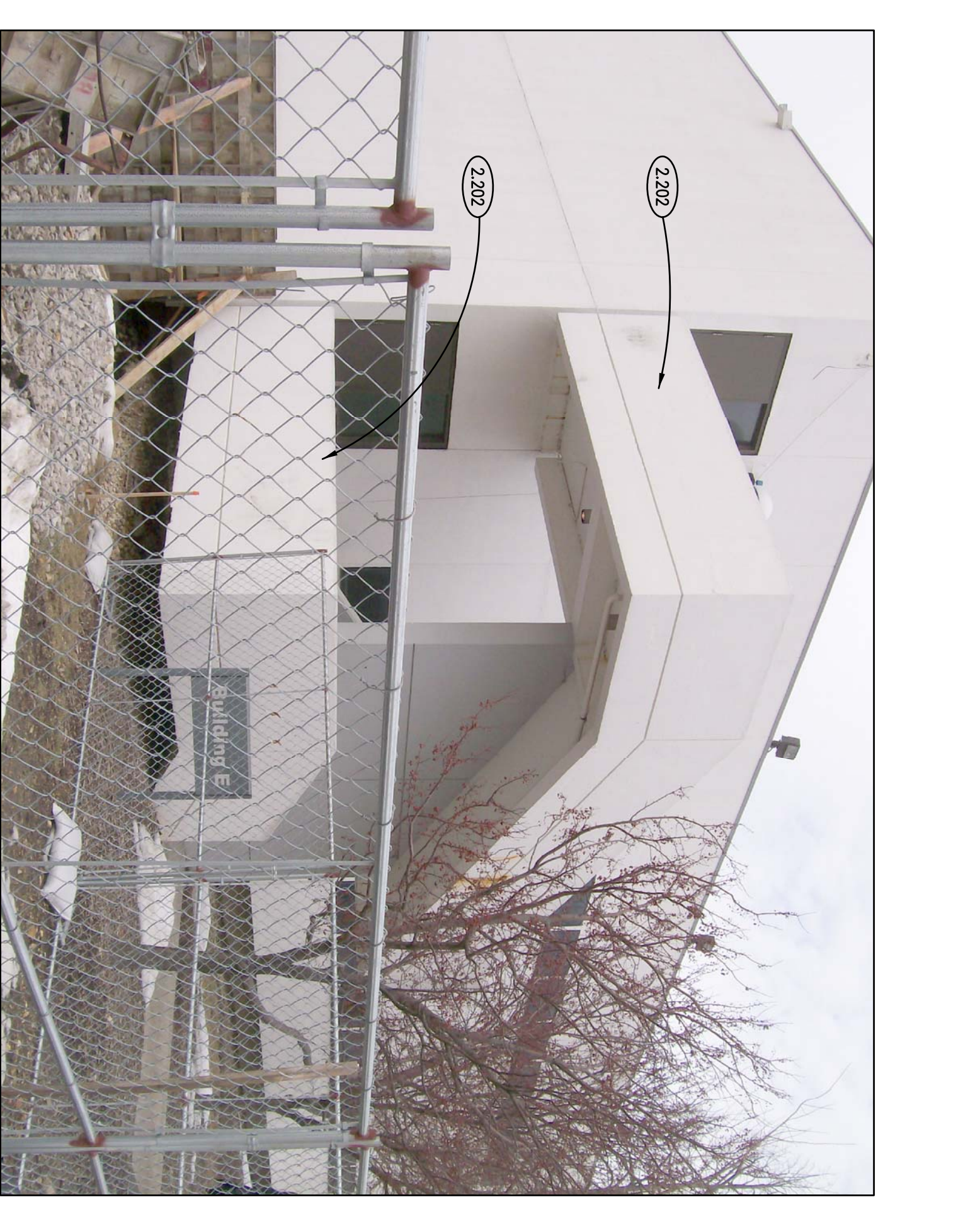
EXISTING CONDITIONS/ DEMO. PHOTO - STAIR "E1"
SCALE: NO SCALE



EXISTING CONDITIONS/ DEMO. PHOTO - STAIR "A1"
SCALE: NO SCALE



EXISTING CONDITIONS/ DEMO. PHOTO - STAIR "E2"
SCALE: NO SCALE



EXISTING CONDITIONS/ DEMO. PHOTO - STAIR "E1"
SCALE: NO SCALE

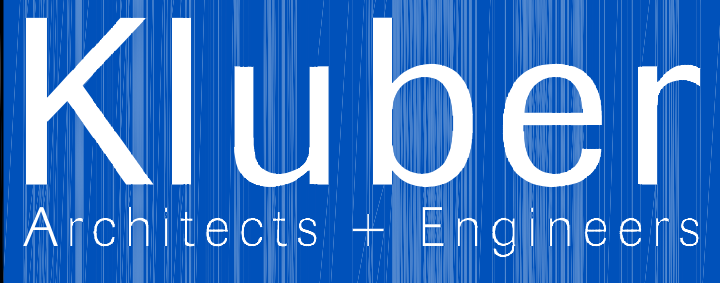


EXISTING CONDITIONS/ DEMO. PHOTO - STAIR "A1"
SCALE: NO SCALE

JOLIET JUNIOR COLLEGE - EXTERIOR STAIRWELL REPLACEMENT

1215 HUBBOLT ROAD
JOLIET, ILLINOIS 60431

Kluber, Inc.
901 N. Batavia Ave., Suite 301
Batavia, Illinois 60510
tel. 630.406.1213
fax 630.406.9472
www.kluberinc.com

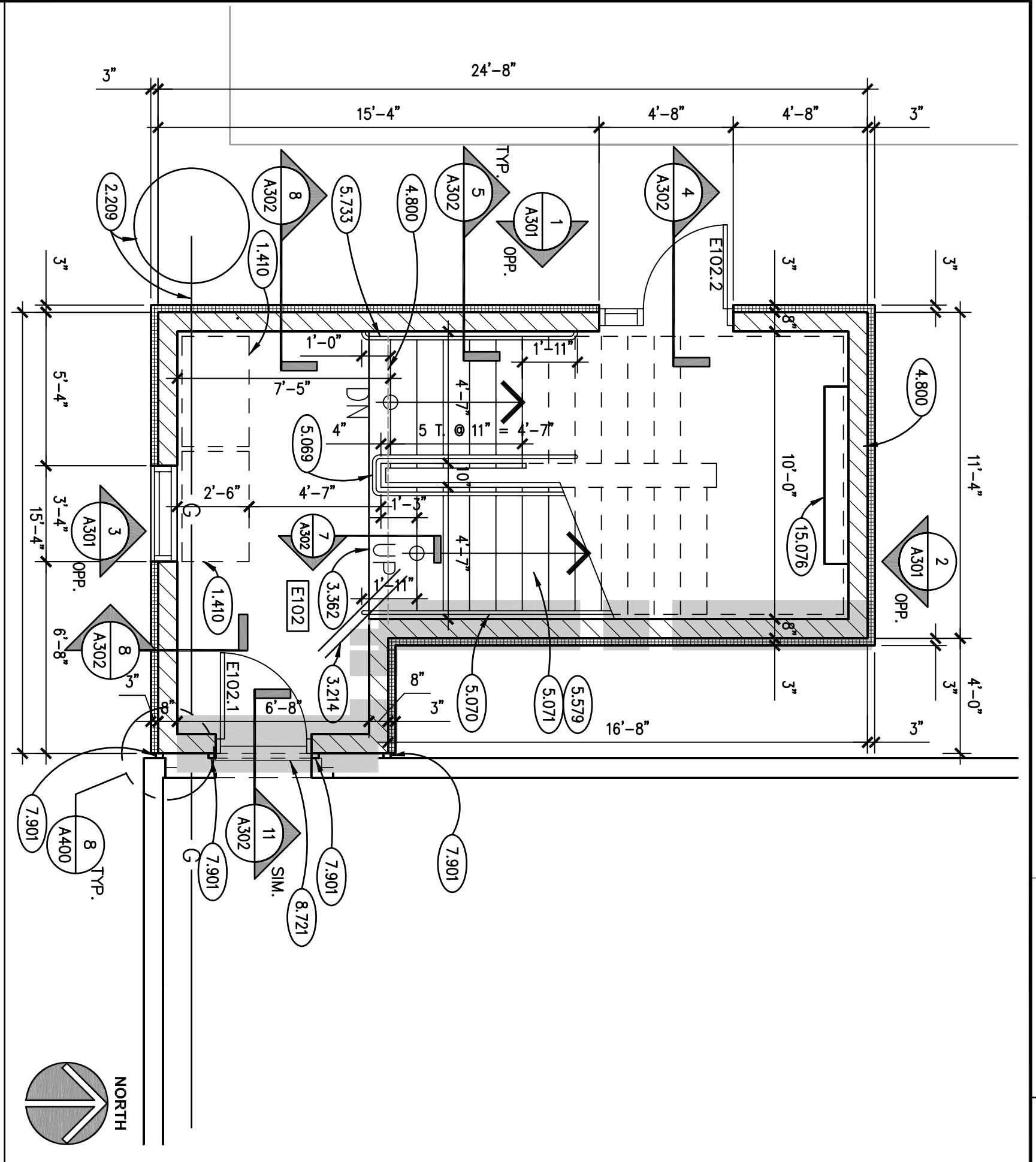


ISSUED	
DATE	BID DOCUMENTS
07/05/11	

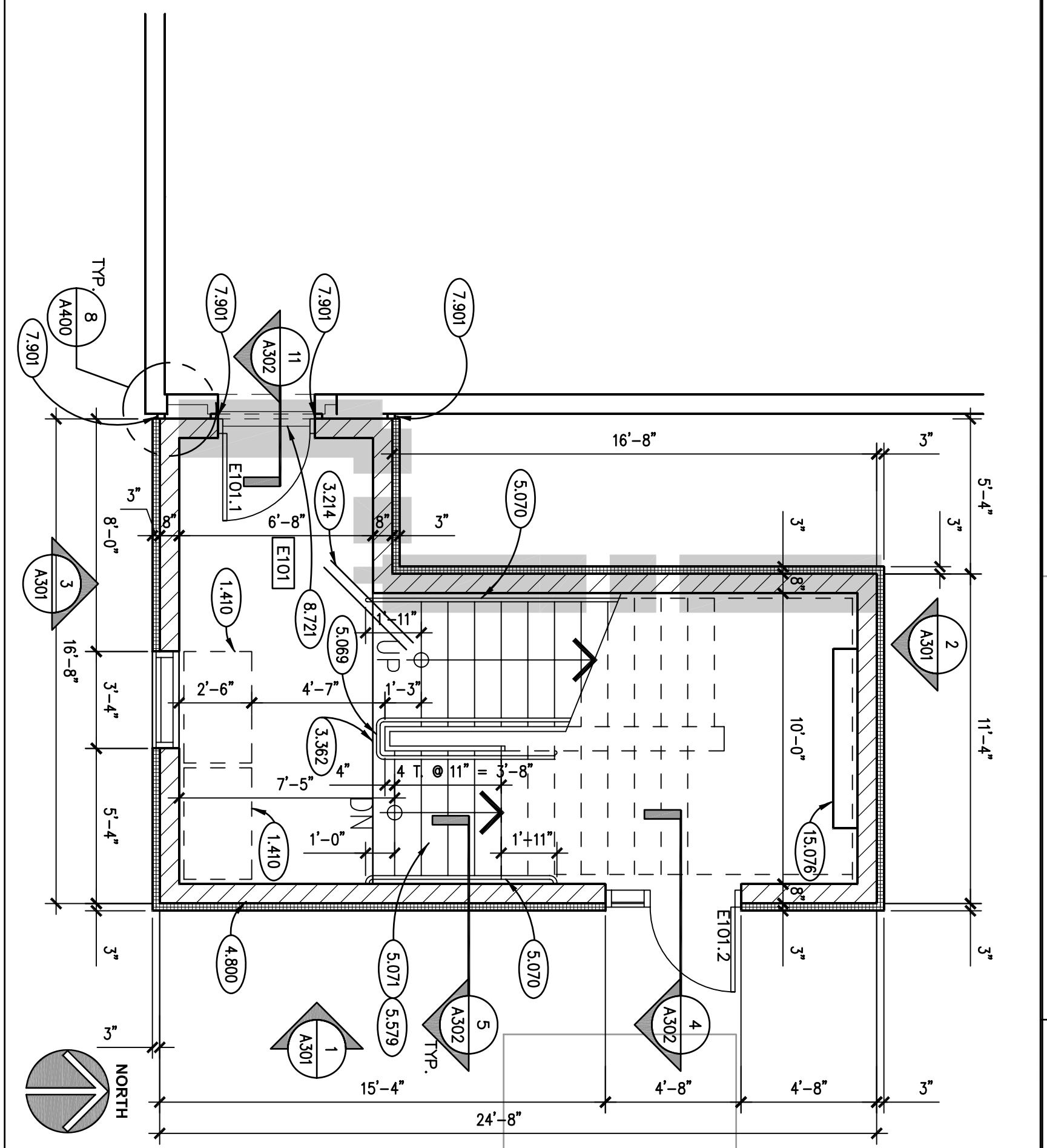
JOB NO. 11-292-891
DRAWN JMP
CHECKED JMP
APPROVED GCH

SHEET TITLE
STAIR DEMOLITION PLANS & PHOTOS
SHEET NUMBER

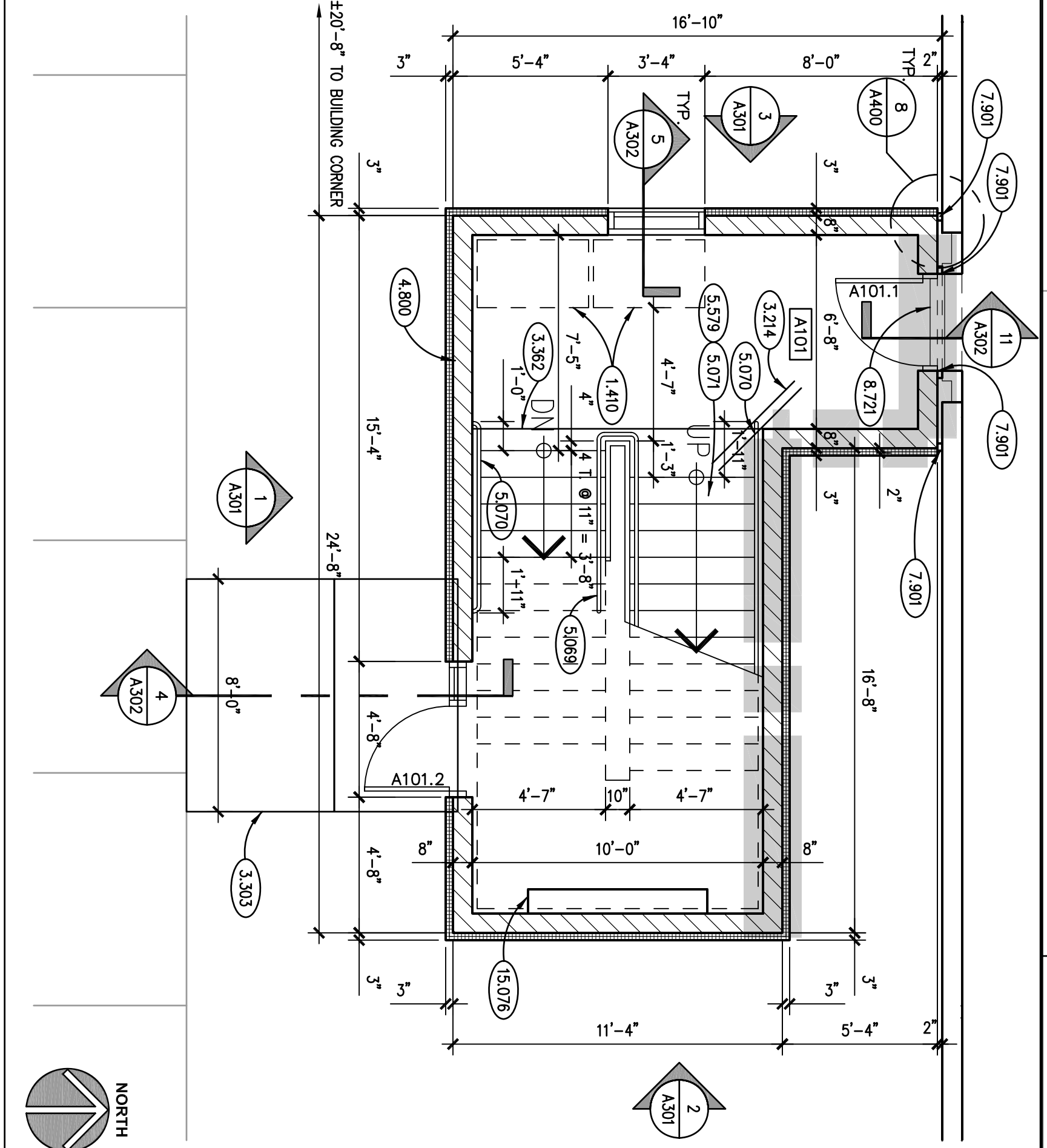
A200



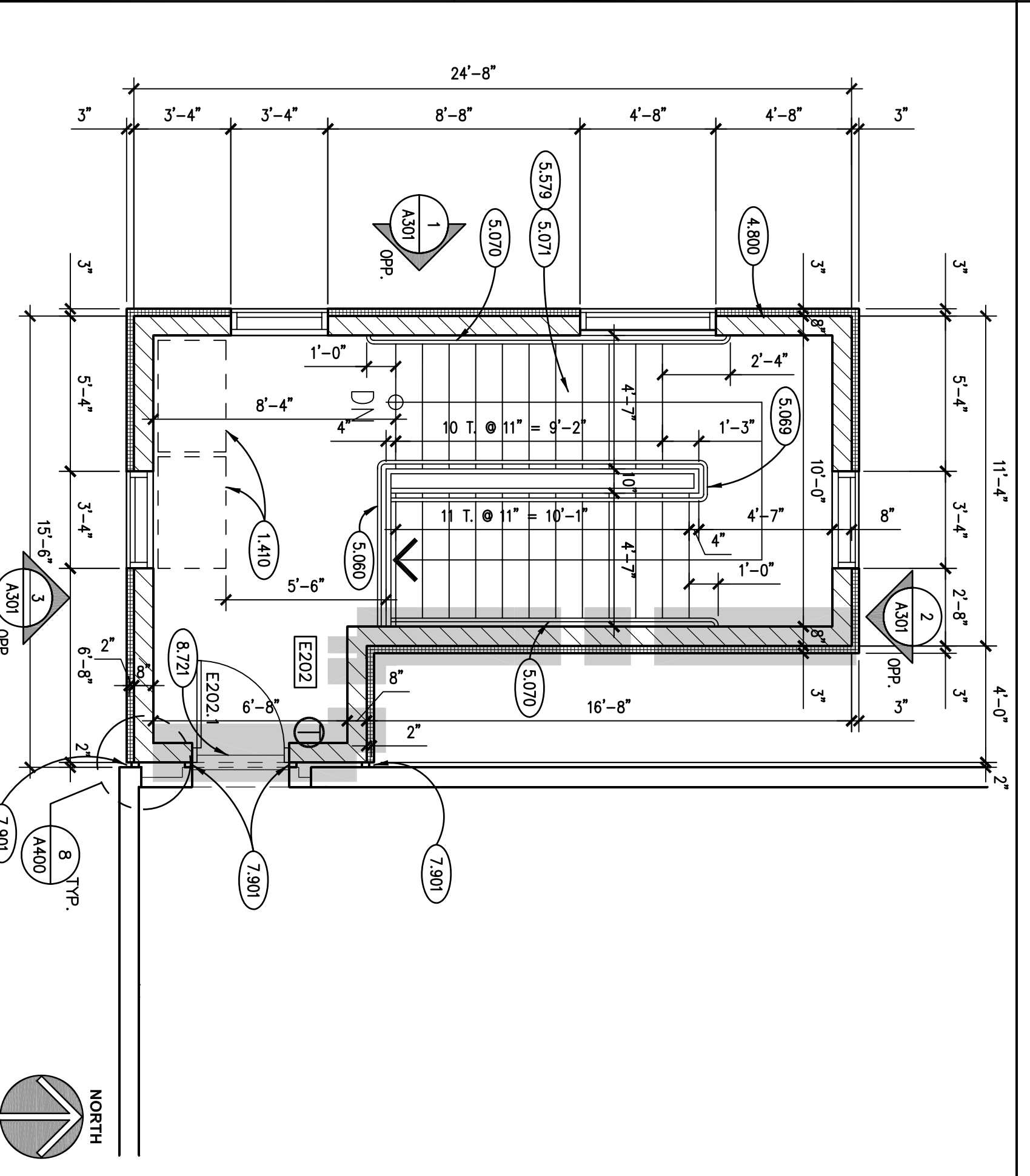
STAIR "E2" FIRST FLOOR PLAN
SCALE: 1/4" = 1'-0"



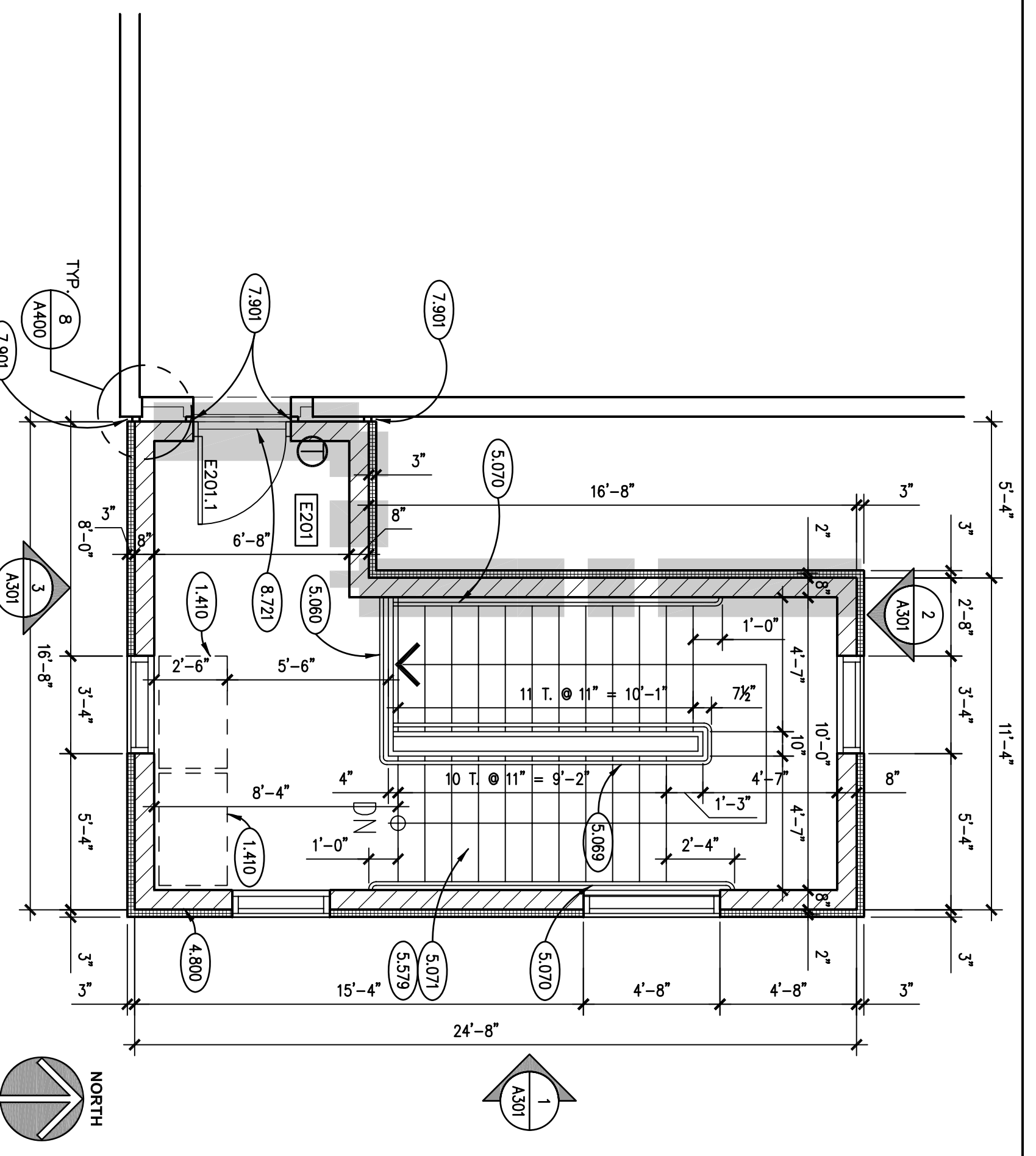
STAIR "E1" FIRST FLOOR PLAN
SCALE: 1/4" = 1'-0"



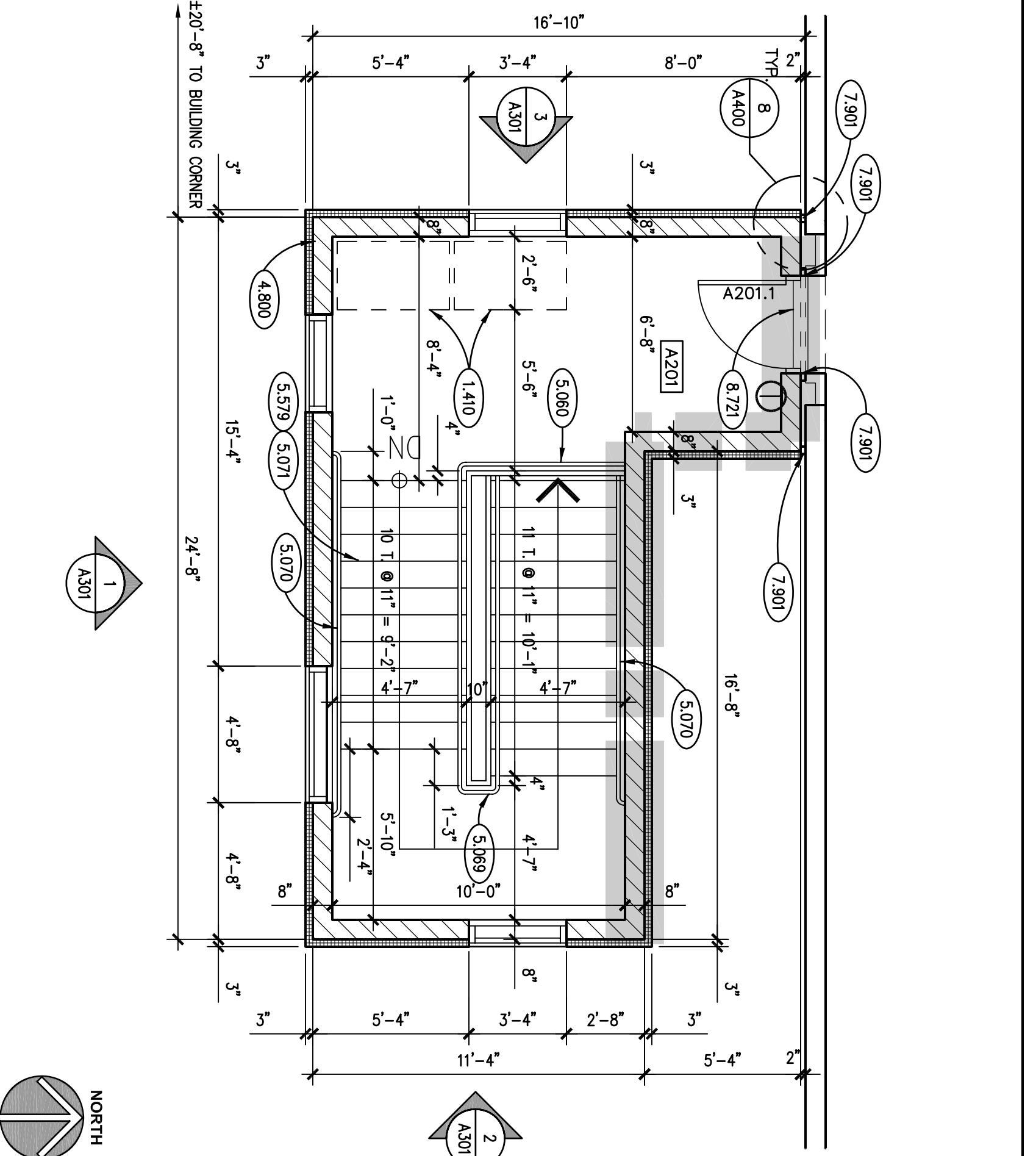
STAIR "A1" FIRST FLOOR PLAN (ALTERNATE #1)
SCALE: 1/4" = 1'-0"



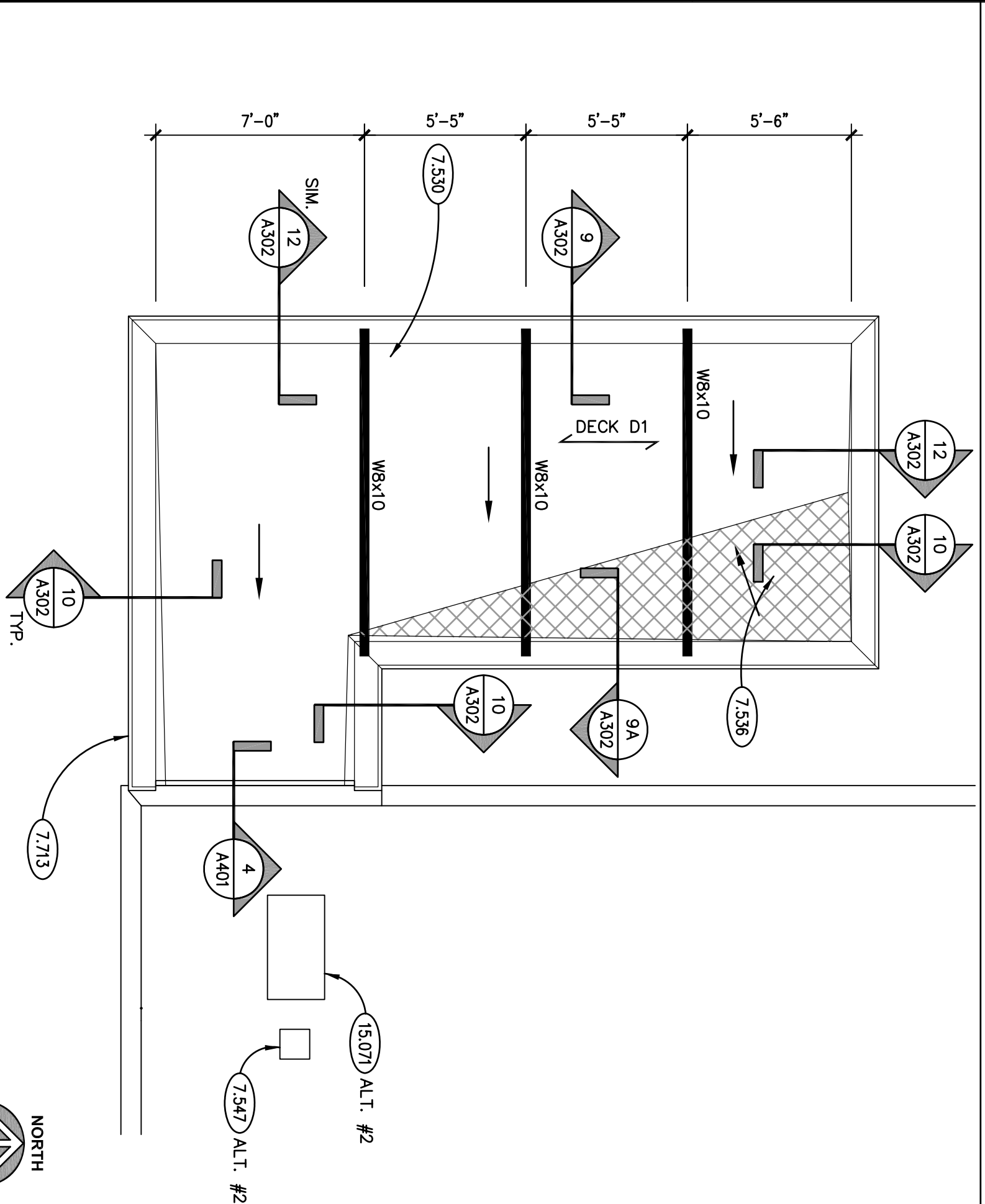
STAIR "E2" SECOND FLOOR PLAN
SCALE: 1/4" = 1'-0"



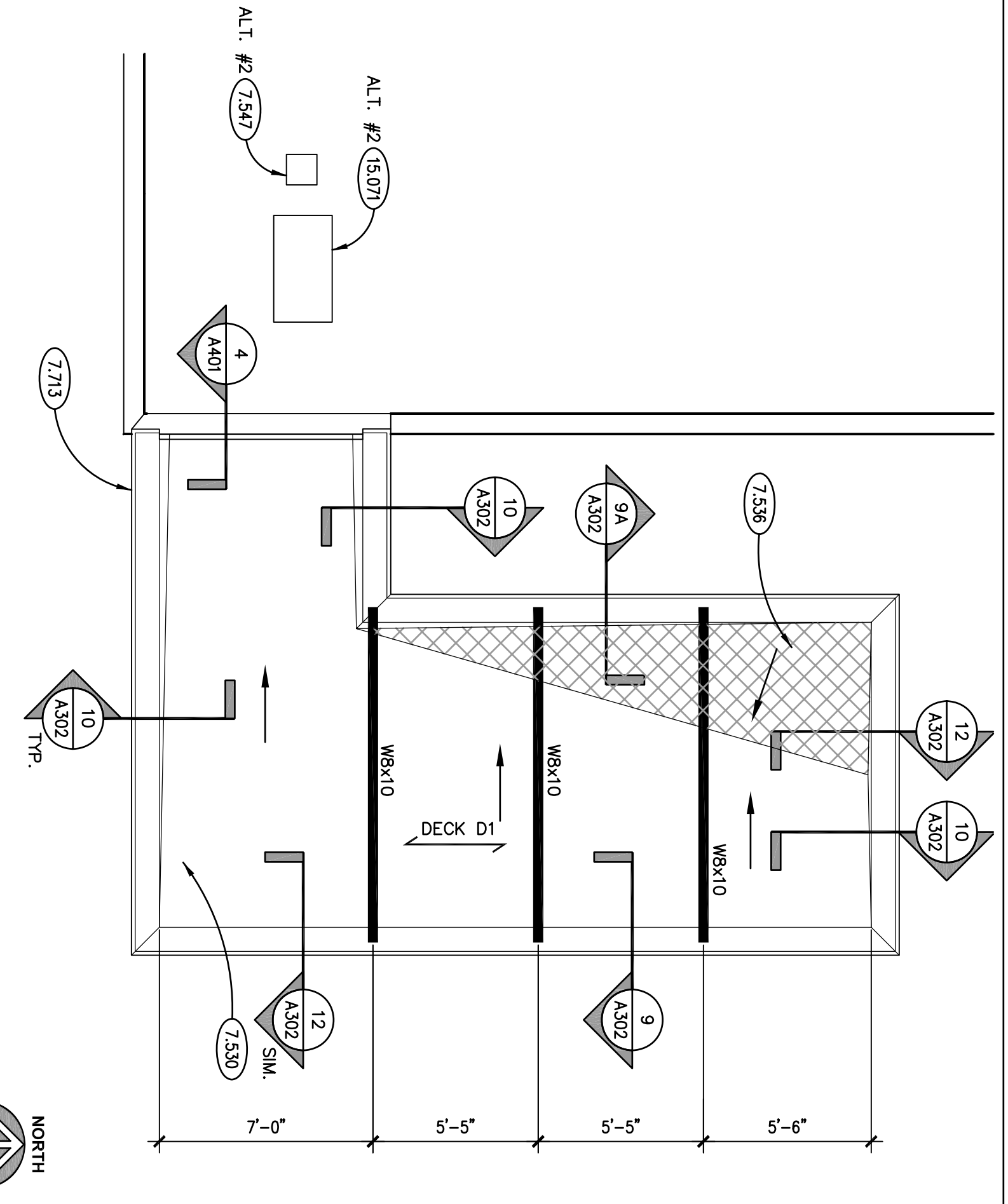
STAIR "E1" SECOND FLOOR PLAN
SCALE: 1/4" = 1'-0"



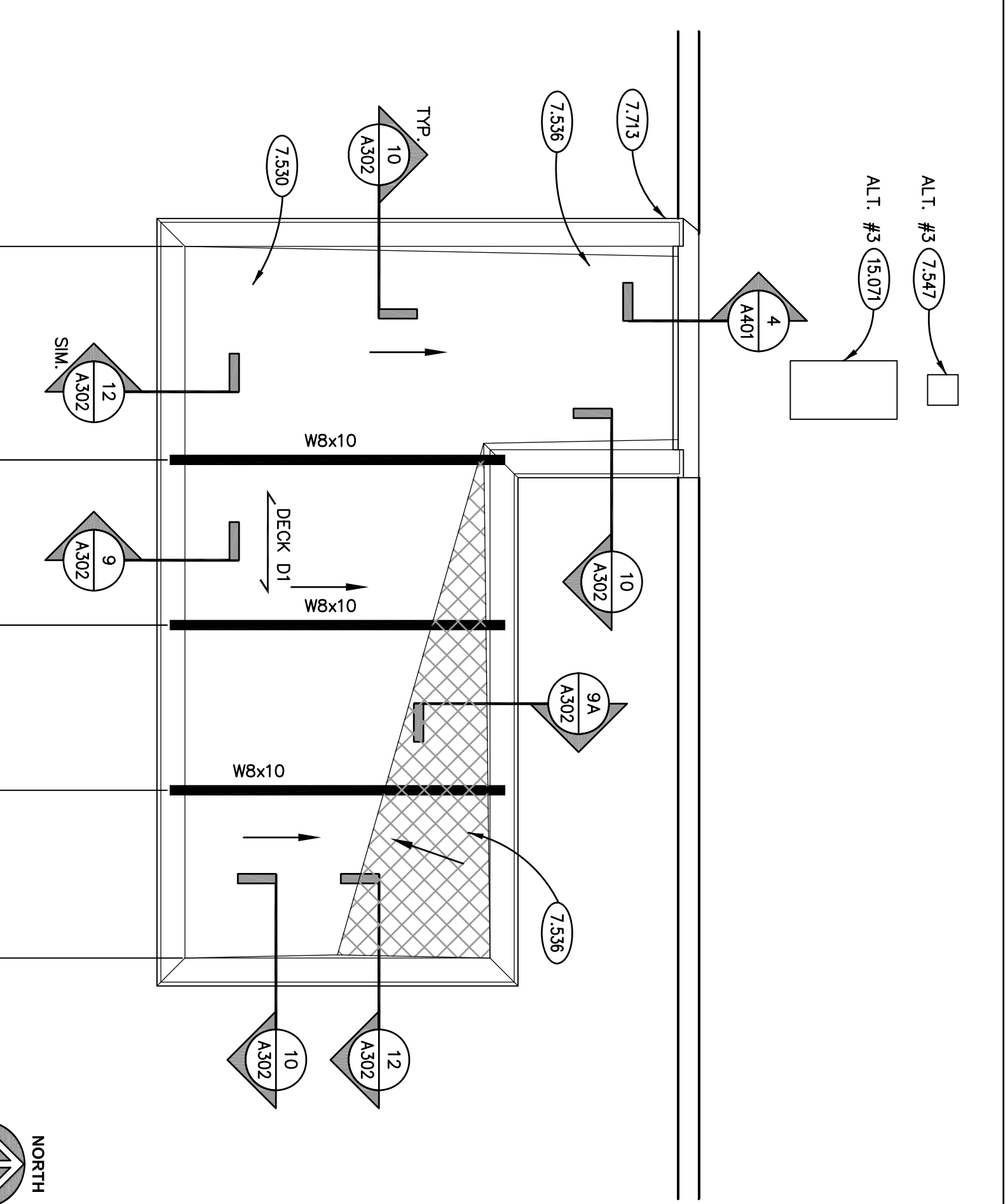
STAIR "A1" SECOND FLOOR PLAN (ALTERNATE #1)
SCALE: 1/4" = 1'-0"



STAIR "E2" ROOF PLAN
SCALE: 1/4" = 1'-0"



STAIR "E1" ROOF PLAN
SCALE: 1/4" = 1'-0"



STAIR "A1" ROOF PLAN (ALTERNATE #1)
SCALE: 1/4" = 1'-0"

KEYNOTES

- 1410 30" x 48" CLEAR FLOOR SPACE FOR MECHCAURE
- 2209 PROTECT EXISTING GAS MAIN AND VALVE WANT TO REMAIN. PROTECT AS REQUIRED.
- 3214 CONCRETE REINFORCEMENT: (2) #4x4'-0" LONG DOWELS CENTERED ON JOINT AND 5/8" WALL BERTH.
- 3304 CAST-IN-PLACE CONCRETE: (2) #4x4'-0" LONG DOWELS CENTERED ON JOINT AND 5/8" WALL BERTH. REINFORCEMENT SHALL BE 5" THICK UNLESS OTHERWISE NOTED.
- 3302 CAST-IN-PLACE CONCRETE JOINT REINFORCEMENT: 5/8" DIA. STEEL BARS @ 4'-0" ON CENTER.
- 4800 WELDED WIRE MESH: REFER TO PLANS SCHEDULES, ARCHITECTURAL DRAWINGS AND SPECIFICATIONS FOR DETAILED INFORMATION.
- 5060 METAL FABRICATION: STEEL GUARD RAIL ASSEMBLY: REFER TO DRAWING A401.
- 5070 METAL FABRICATION: STEEL HANDRAIL ASSEMBLY: REFER TO DETAIL V/A401.
- 5071 METAL FABRICATION: STEEL STAIR PANE CONCRETE FLEED.
- 5213 ARCHITECTURAL METAL ASSEMBLY: STAINLESS STEEL WALL-MOUNTED HANDRAIL: 1 1/2" (NOM.) DIA. SCHEDULE 40 PIPE AND FITTINGS AS MANUFACTURED BY JULIUS BLUM & CO., WWW.BLUMBLUM.COM, 90 DEG. ELBOWS TO BE USED AT CORNERS AND AT REINFORCING WALLS. WALL BRACKETS (PART #223) @ 4'-0" O.C. (MAX.) TO BE USED AT CORNERS AND AT REINFORCING WALLS. REFER TO FABRICATION, TYPICAL WELDED AND GRIND JOINTS FUSION WELDING. POLISH ENDS TO MATCH FINISH.
- 7350 SINGLE-PLY, FULLY ADHERED ROOFING SYSTEM.
- 7358 SINGLE-PLY ROOFING MATERIAL: ROOF INSULATION: TAPERED 1/2" PER FOOT.
- 7347 ROOF FLASHING: REFER TO DETAIL V/A401.
- 7349 METAL ROOF EDGE FLASHING: MATERIAL, THICKNESS AND FINISH AS SPECIFIED.
- 7391 JOINT SEALER: EXPANSION JOINT SEALER: TYPE EA-1; REFER TO SPECIFICATIONS.
- 8221 DOOR THRESHOLD: ALUMINUM FLAT PLATE: TYPE: 6" WIDE X 1/4" THICK WITH BEVELLED EDGES: OORE ENDS TO COMPLETELY COVER EXPANSION JOINT IN FLOOR. ANCHOR TO SLAB SIDE OF JOINT ONLY.
- 15107 MECHANICAL EQUIPMENT: (ALTERNATE #1 AND #2) SPLIT SYSTEM AIR COOLED CONDENSING UNIT: SPLIT SYSTEM TO BE TIED INTO EXISTING JOHNSON CONTROLS BUILDING MANAGEMENT SYSTEM. REFER TO MECHANICAL SPECIFICATIONS. REFER TO REFLECTED CEILING PLAN FOR SPLIT SYSTEM EVAPORATOR LOCATION.
- 15108 CABINET UNIT HEATER: REFER TO ELECTRICAL DRAWINGS AND MECHANICAL SPECIFICATIONS.

GENERAL NOTES

1. REFER TO DRAWING C100 FOR PROJECT GENERAL NOTES.
2. ADDITIONAL DEMOLITION/ RECONSTRUCTION AND REMOVAL/REPLACEMENT OF ARCHITECTURAL AND STRUCTURAL ELEMENTS IS REQUIRED TO COMPLETE THE WORK OF THIS PROJECT. COORDINATE WITH ARCHITECTURAL AND ELECTRICAL DRAWINGS AND PROVIDE ALL NECESSARY REVISIONS TO THE DRAWINGS TO COMPLETE THE WORK SHOWN ON THOSE DRAWINGS. STRUCTURAL ELEMENTS AS REQUIRED TO COMPLETE THE WORK SHOWN ON THOSE DRAWINGS.

JOLIET JUNIOR COLLEGE - EXTERIOR STAIRWELL REPLACEMENT		1215 HOUBOLT ROAD JOLIET, ILLINOIS 60431			
<p>A300</p> <p>STAIR FLOOR & ROOF PLANS</p>		<p>ISSUED</p> <p>07/05/11 BID DOCUMENTS</p>		<p>KLUBER, INC.</p> <p>901 N. BATAVIA AVE., SUITE 301</p> <p>BATAVIA, ILLINOIS 60510</p> <p>TEL. 630.406.1213</p> <p>FAX 630.406.9472</p> <p>WWW.KLUBERINC.COM</p>	