

ISSUED	
07/26/11	REV. DOCUMENTS
08/16/11	ADDENDUM NO. 1
1	

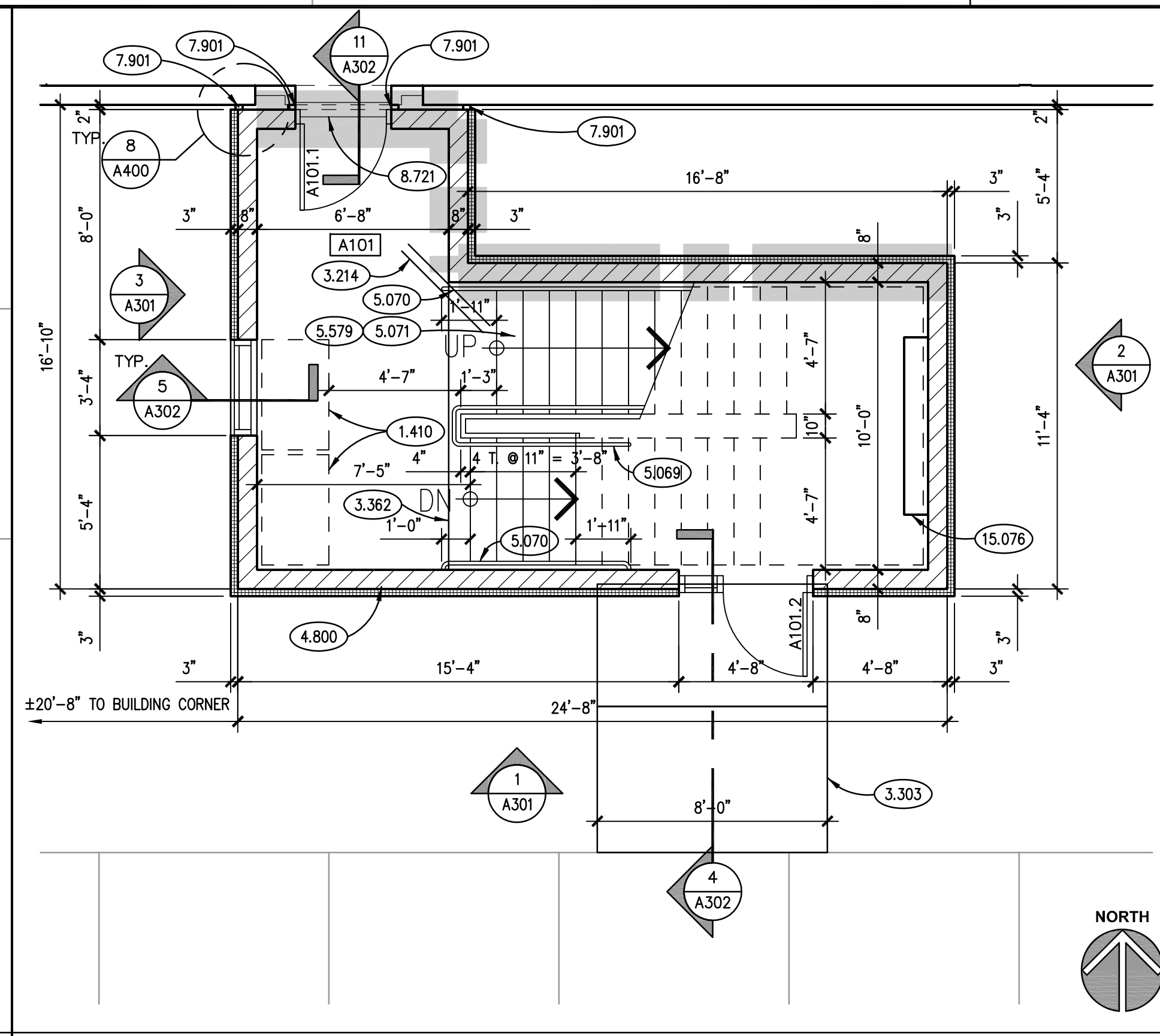
JOB NO.	11-292-691
DRAWN	JMP
CHECKED	JMP
APPROVED	CDH

SHEET TITLE
STAIR FLOOR & ROOF PLANS

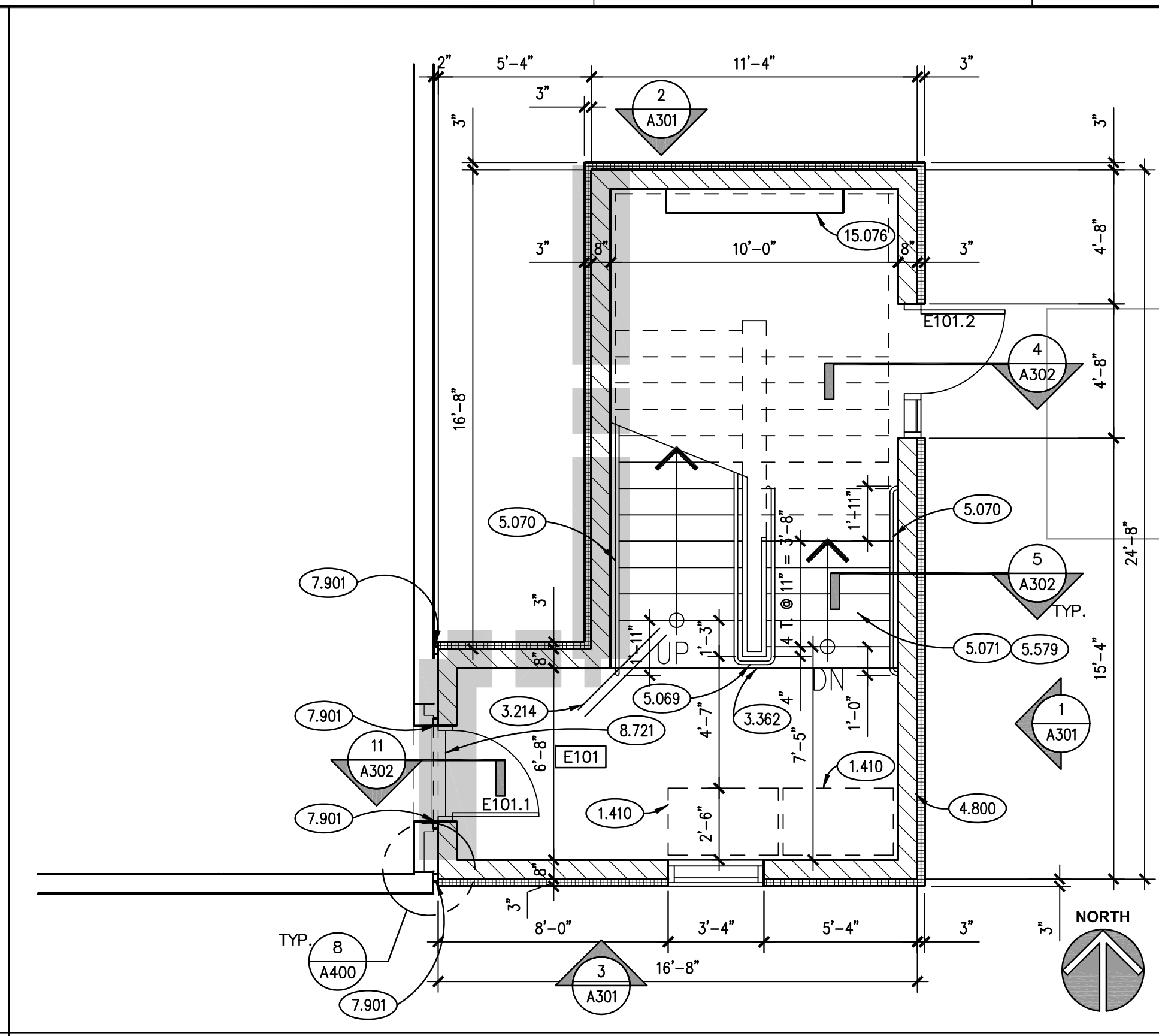
SHEET NUMBER
A300

KEYNOTES

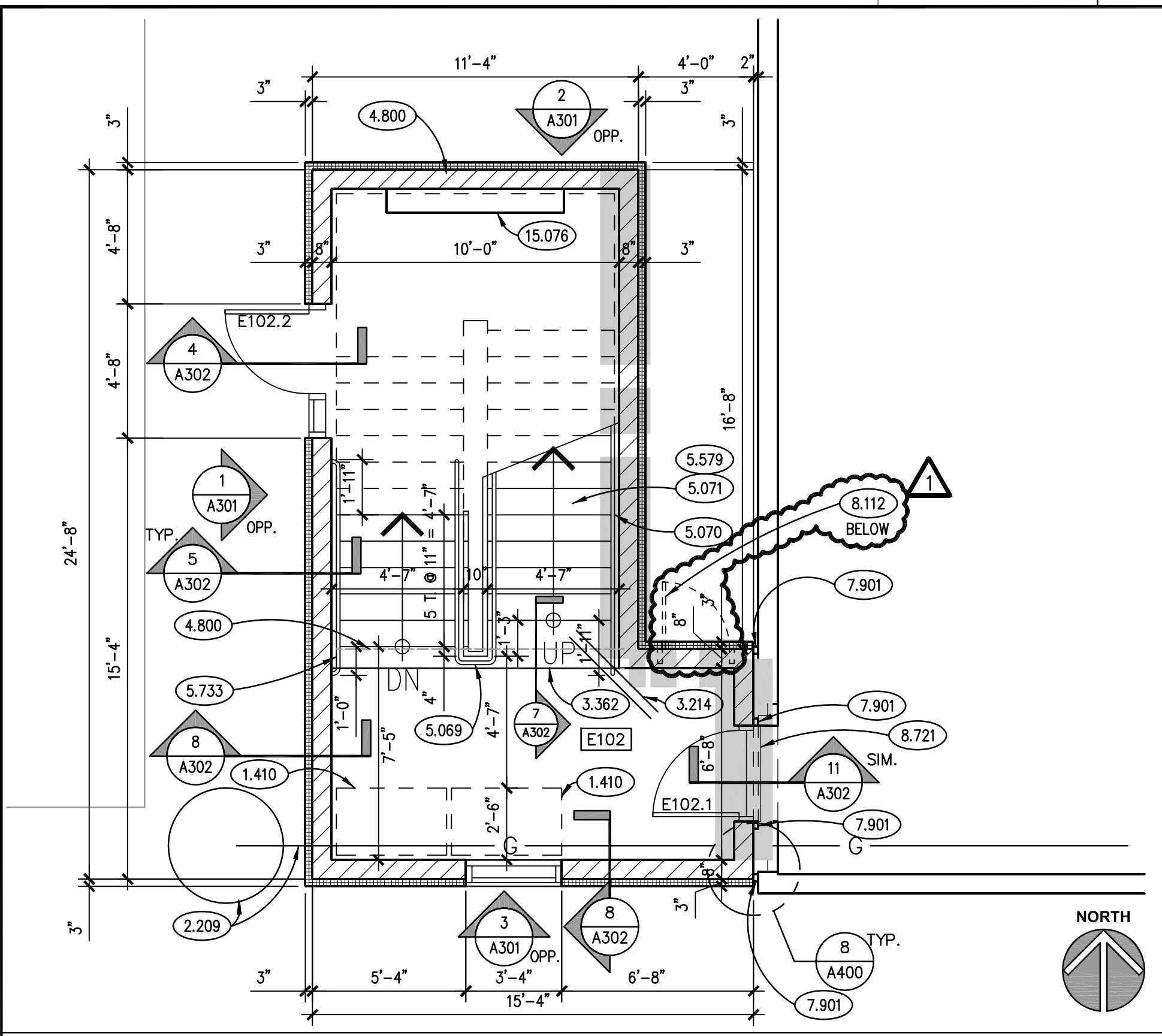
- 1.410 30" X 48" CLEAR FLOOR SPACE FOR WHEELCHAIR.
- 2.209 PROTECT EXISTING GAS MAIN AND VALVE VAULT TO REMAIN. PROTECT AS REQUIRED.
- 3.324 CONCRETE REINFORCEMENT: (2)-#4x4'-0" LONG DOWELS CENTERED ON JOINT AND SLAB/WALL DEPTH.
- 3.503 CAST-IN-PLACE CONCRETE: EXTERIOR SLAB-ON-GRADE. REFER TO SPECIFICATIONS FOR MIX TYPE AND FINISH. REINFORCE WITH WWF-6x6 W2.0 X W2.0. SLOPE AWAY FROM BUILDING ELEVATION AT DOOR AT MATCH INTERIOR SLAB/FINISH FLOOR ELEVATION. SLAB TO BE 5" THICK U.N.O.
- 3.362 CAST-IN-PLACE CONCRETE JOINT DEVICE/FILLER: SLAB CONTRACTION JOINT. SAWCUT 4-12 HOURS AFTER POUR. "ZIPSTRIP" ALSO ACCEPTABLE.
- 4.800 MASONRY ASSEMBLY: REFER TO PLANS, SCHEDULES, ARCHITECTURAL DRAWINGS AND SPECIFICATIONS FOR DETAILED INFORMATION.
- 5.060 METAL FABRICATION: STEEL GUARD RAIL ASSEMBLY; REFER TO DRAWING A401.
- 5.069 METAL FABRICATION: STEEL HANDRAIL ASSEMBLY; REFER TO DETAIL 1/A401.
- 5.070 METAL FABRICATION: STEEL HANDRAIL ASSEMBLY; 1 1/2" NOM. DIA. STEEL PIPE W/WALL BRACKETS OR FLOOR SUPPORTS @ 4'-0" O.C. MAX. MATERIAL TO BE STAINLESS STEEL.
- 5.071 METAL FABRICATION: STEEL STAIR PAN; CONCRETE FILLED.
- 5.733 ARCHITECTURAL METAL ASSEMBLY: STAINLESS STEEL WALL-MOUNTED HANDRAIL; 1 1/2" (NOM.) DIA. SCHEDULE 40 PIPE AND FITTINGS AS MANUFACTURED BY JULIUS BLUM & CO., www.juliusblum.com; 90 DEG. ELBOWS (PART #226) AT CORNERS AND AT RETURNS TO WALLS; WALL BRACKETS (PART #223) @ 4'-0" O.C. (MAX.) TO SUPPORT HANDRAIL; SUBMIT SHOP DRAWINGS FOR THIS ASSEMBLY PRIOR TO FABRICATION; FULLY WELD AND GRIND JOINTS FLUSH, INVISIBLE; POLISH ENTIRE RAILING TO SATIN FINISH.
- 7.530 SINGLE-PLY, FULLY ADHERED ROOFING SYSTEM.
- 7.536 SINGLE-PLY ROOFING MATERIAL; RIGID INSULATION; TAPERED 1/2" PER FOOT.
- 7.542 SINGLE-PLY ROOFING ACCESSORY: (2) CONCRETE WALKWAY TRAVELERS SET ON SACRIFICIAL ROOFING MEMBRANE SLIP SHEET.
- 7.547 SINGLE-PLY ROOFING ACCESSORY: MULTIPLE PORT ROOF PORTAL WITH RUBBER BOOT AND CLAMPING RING.
- 7.713 METAL ROOF EDGE FLASHING; MATERIAL, THICKNESS AND FINISH AS SPECIFIED.
- 7.901 JOINT SEALER: EXPANSION JOINT SEALER; TYPE E-1; REFER TO SPECIFICATIONS.
- 8.112 STEEL DOOR; REFER TO DOOR AND FRAME SCHEDULE.
- 8.721 DOOR THRESHOLD: ALUMINUM, FLAT PLATE TYPE; 6" WIDE X 1/4" THICK WITH BEVELED EDGES; COPE ENDS TO COMPLETELY COVER EXPANSION JOINT IN FLOOR; ANCHOR TO STAIR SIDE OF JOINT ONLY.
- 15.071 MECHANICAL EQUIPMENT: (ALTERNATE #1 BID AS NOTED): SPLIT SYSTEM AIR COOLED CONDENSING UNIT. SPLIT SYSTEM TO BE TIED INTO EXISTING JOHNSON CONTROLS BUILDING MANAGEMENT SYSTEM. REFER TO MECHANICAL SPECIFICATIONS. REFER TO REFLECTED CEILING PLAN FOR SPLIT SYSTEM EVAPORATOR LOCATION.
- 15.076 CABINET HEATER: REFER TO ELECTRICAL DRAWINGS AND MECHANICAL SPECIFICATIONS.



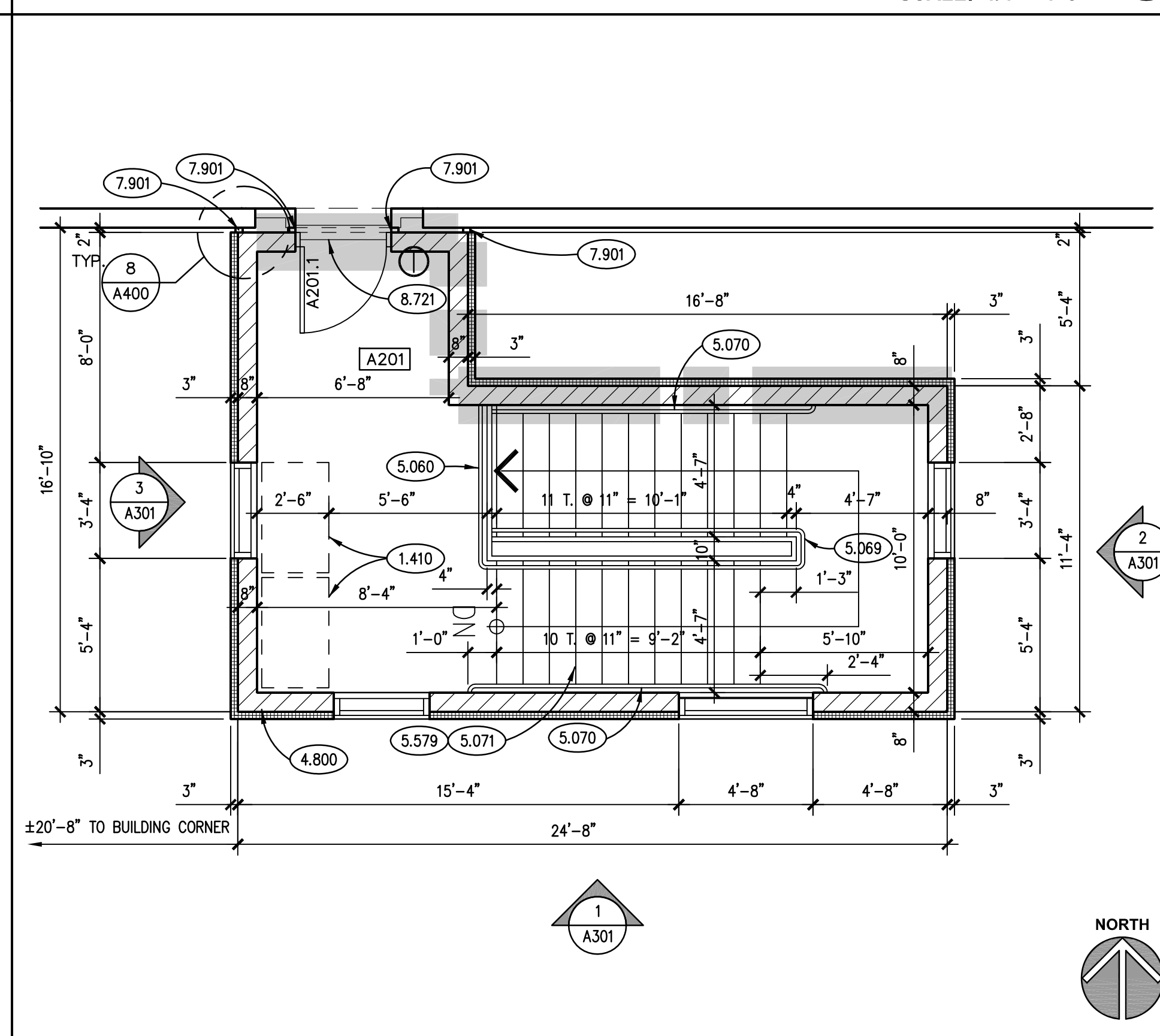
STAIR "A1" FIRST FLOOR PLAN (ALTERNATE #1)
SCALE: 1/4" = 1'-0" ①



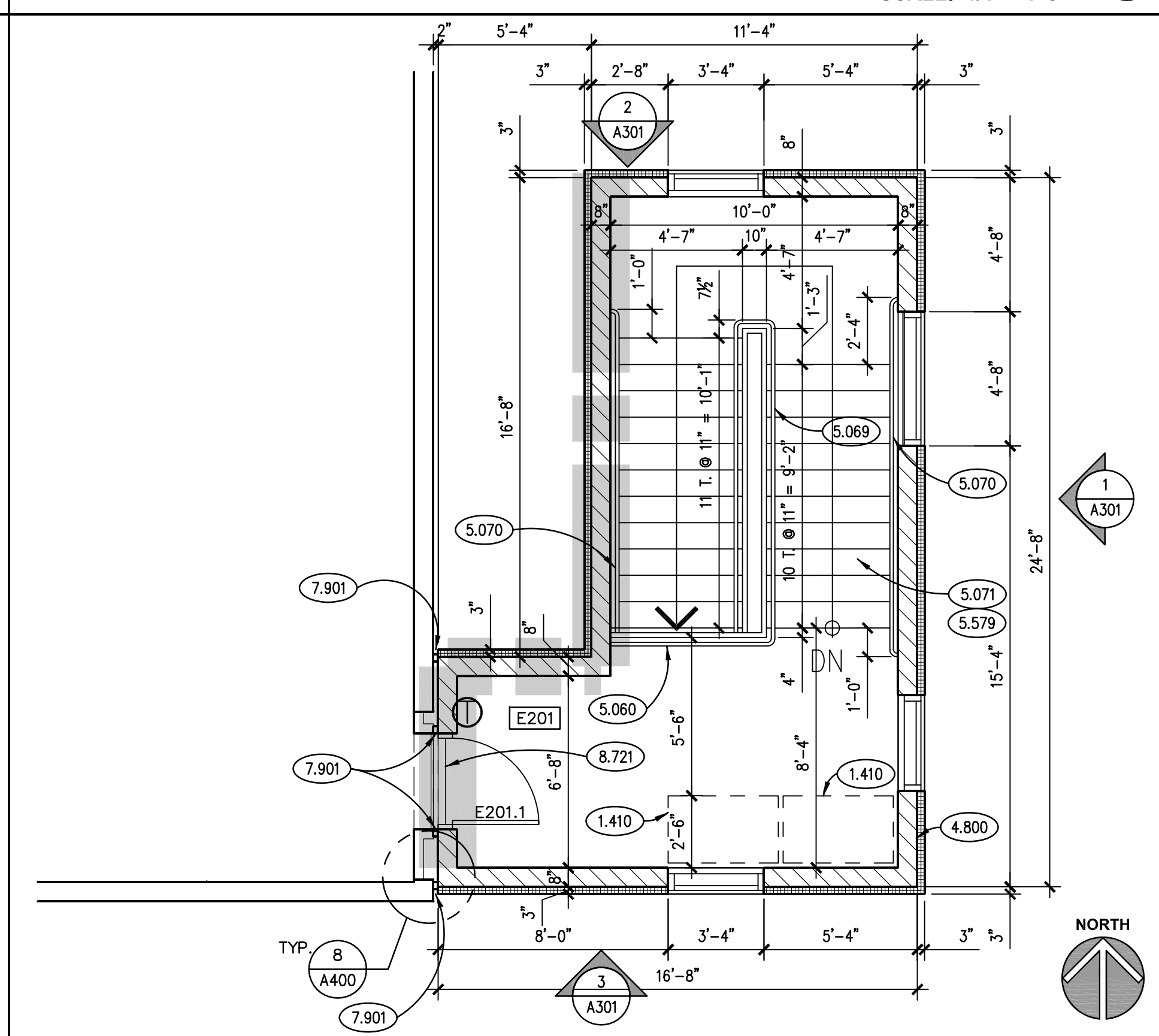
STAIR "E1" FIRST FLOOR PLAN
SCALE: 1/4" = 1'-0" ②



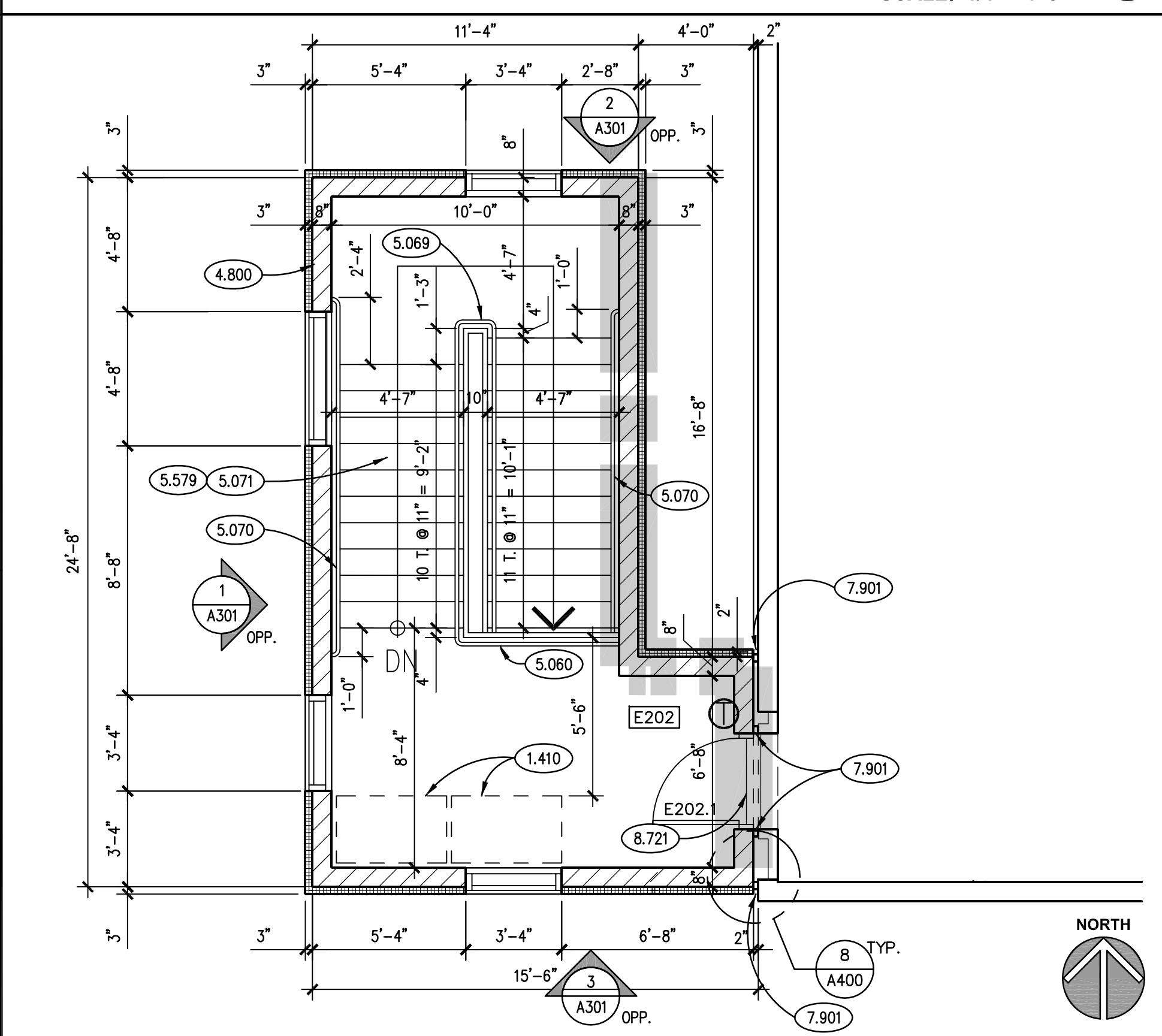
STAIR "E2" FIRST FLOOR PLAN
SCALE: 1/4" = 1'-0" ③



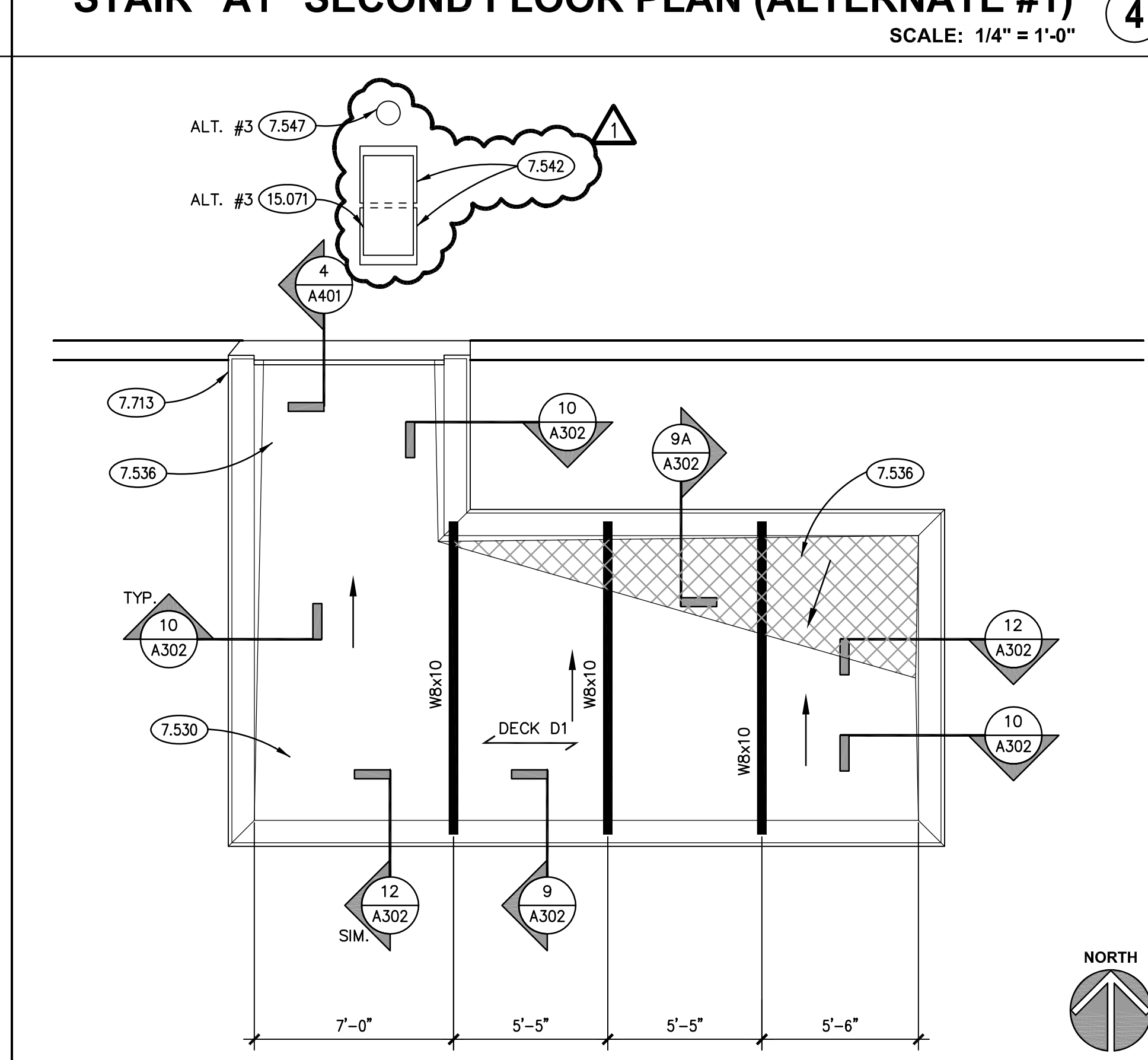
STAIR "A1" SECOND FLOOR PLAN (ALTERNATE #1)
SCALE: 1/4" = 1'-0" ④



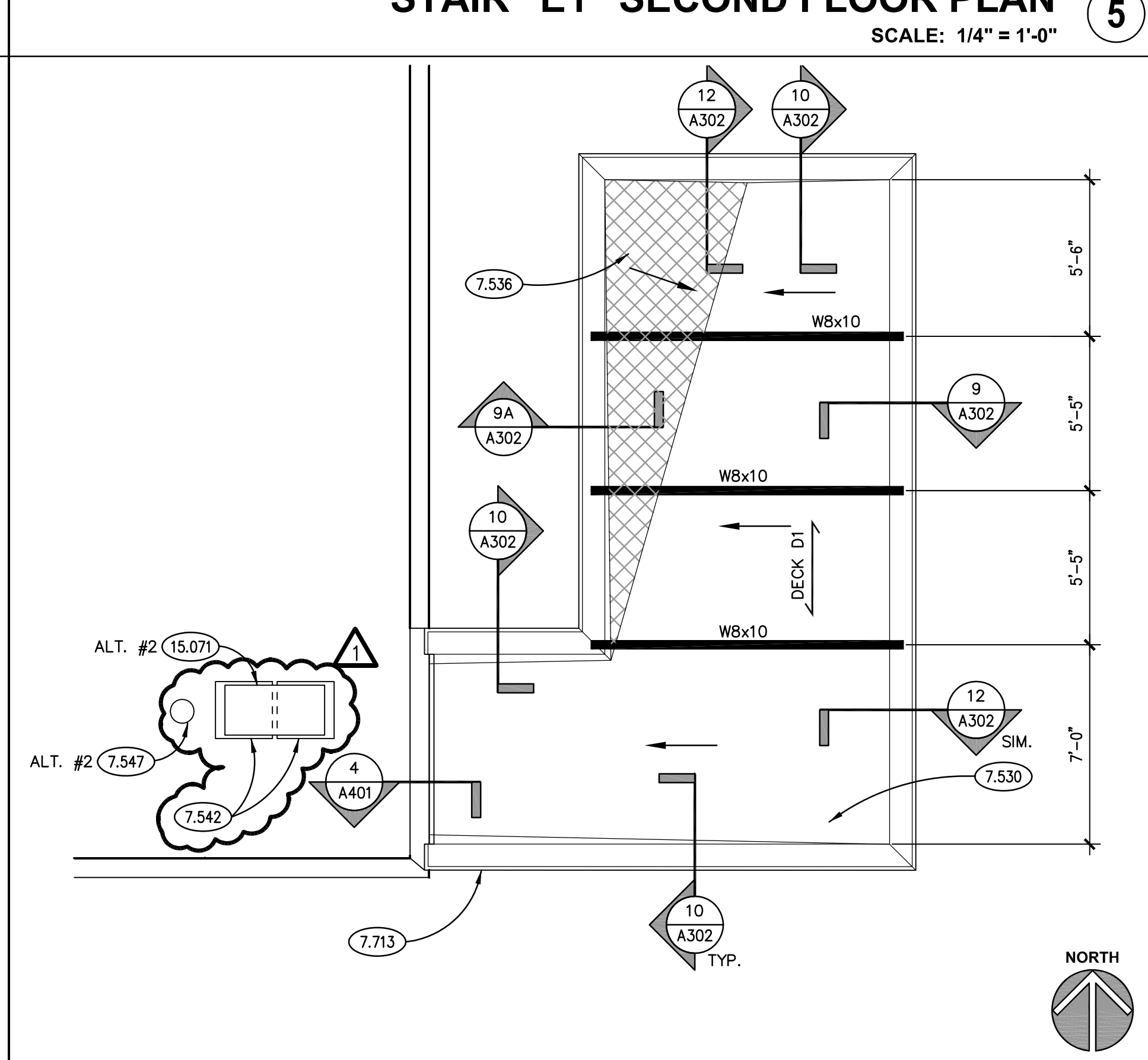
STAIR "E1" SECOND FLOOR PLAN
SCALE: 1/4" = 1'-0" ⑤



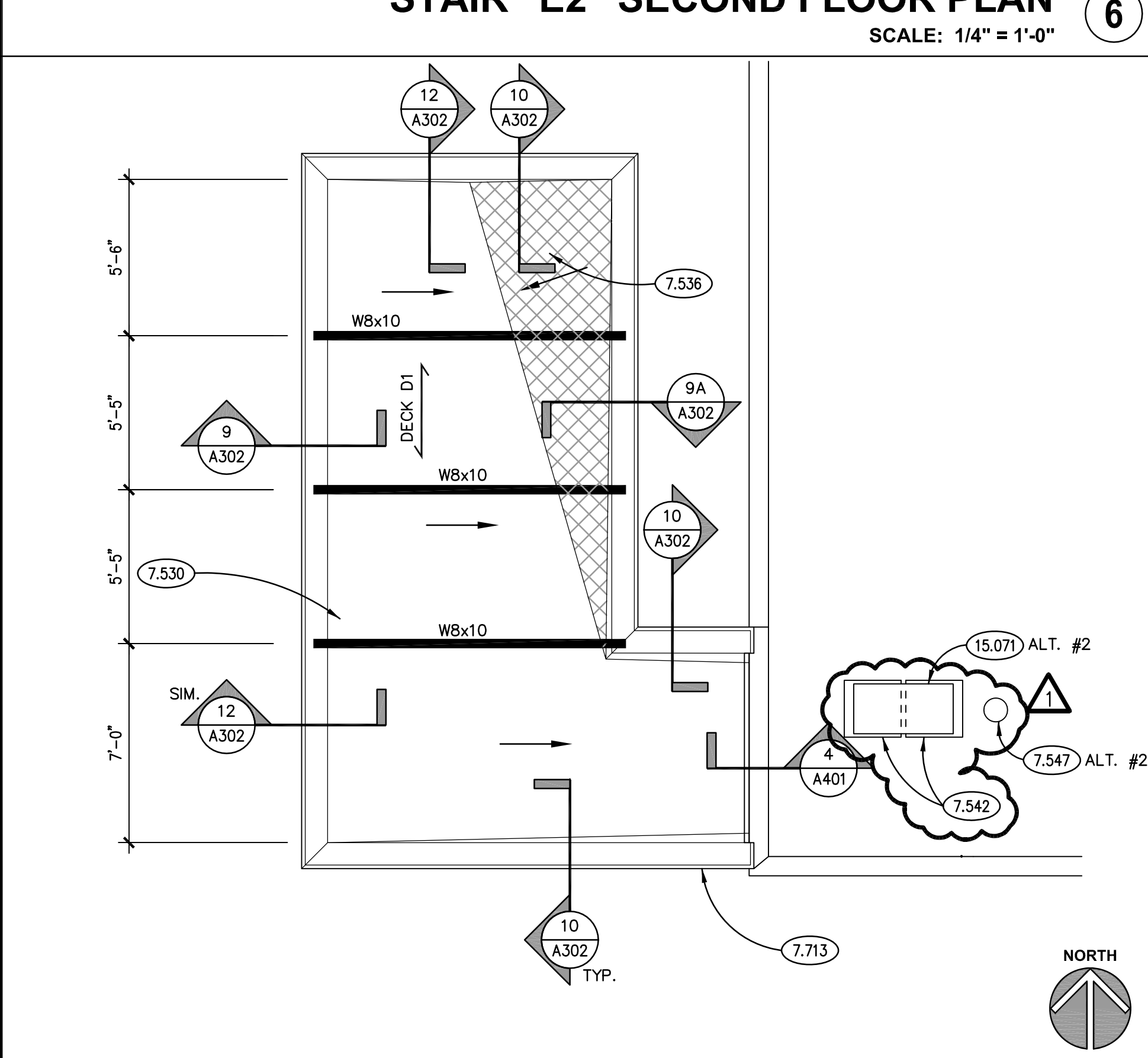
STAIR "E2" SECOND FLOOR PLAN
SCALE: 1/4" = 1'-0" ⑥



STAIR "A1" ROOF PLAN (ALTERNATE #1)
SCALE: 1/4" = 1'-0" ⑦



STAIR "E1" ROOF PLAN
SCALE: 1/4" = 1'-0" ⑧



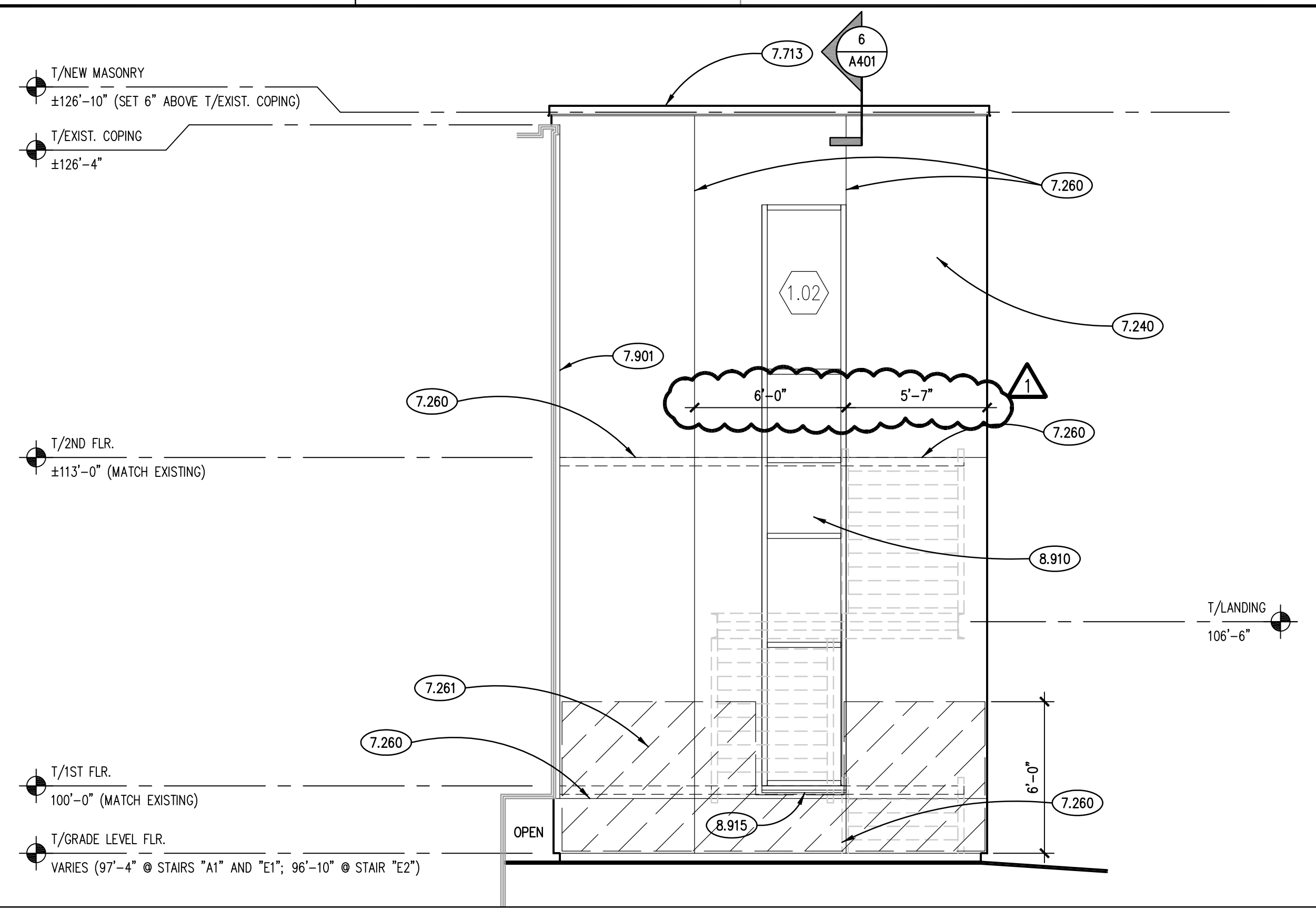
STAIR "E2" ROOF PLAN
SCALE: 1/4" = 1'-0" ⑨

GENERAL NOTES

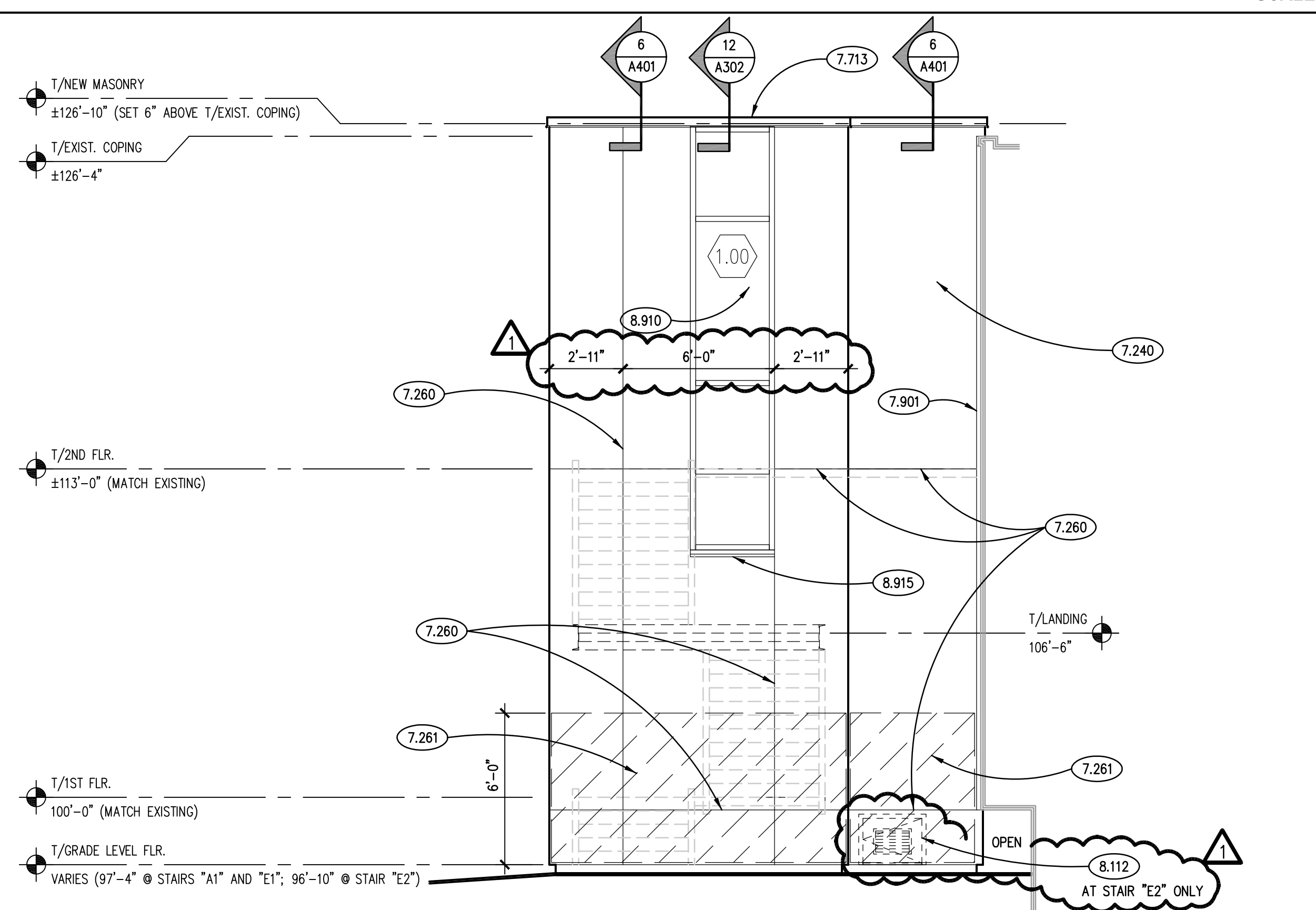
- 1. REFER TO DRAWING G100 FOR PROJECT GENERAL NOTES.
- 2. ADDITIONAL DEMOLITION/ RECONSTRUCTION AND REMOVAL/REPLACEMENT OF ARCHITECTURAL AND STRUCTURAL ELEMENTS IS REQUIRED TO COMPLETE THE WORK OF THIS PROJECT. COORDINATE WITH ARCHITECTURAL AND ELECTRICAL DRAWINGS, AND PROVIDE DEMOLITION/RECONSTRUCTION AND REMOVAL/REPLACEMENT OF ARCHITECTURAL AND STRUCTURAL ELEMENTS AS REQUIRED TO COMPLETE THE WORK SHOWN ON THOSE DRAWINGS.

KEYNOTES

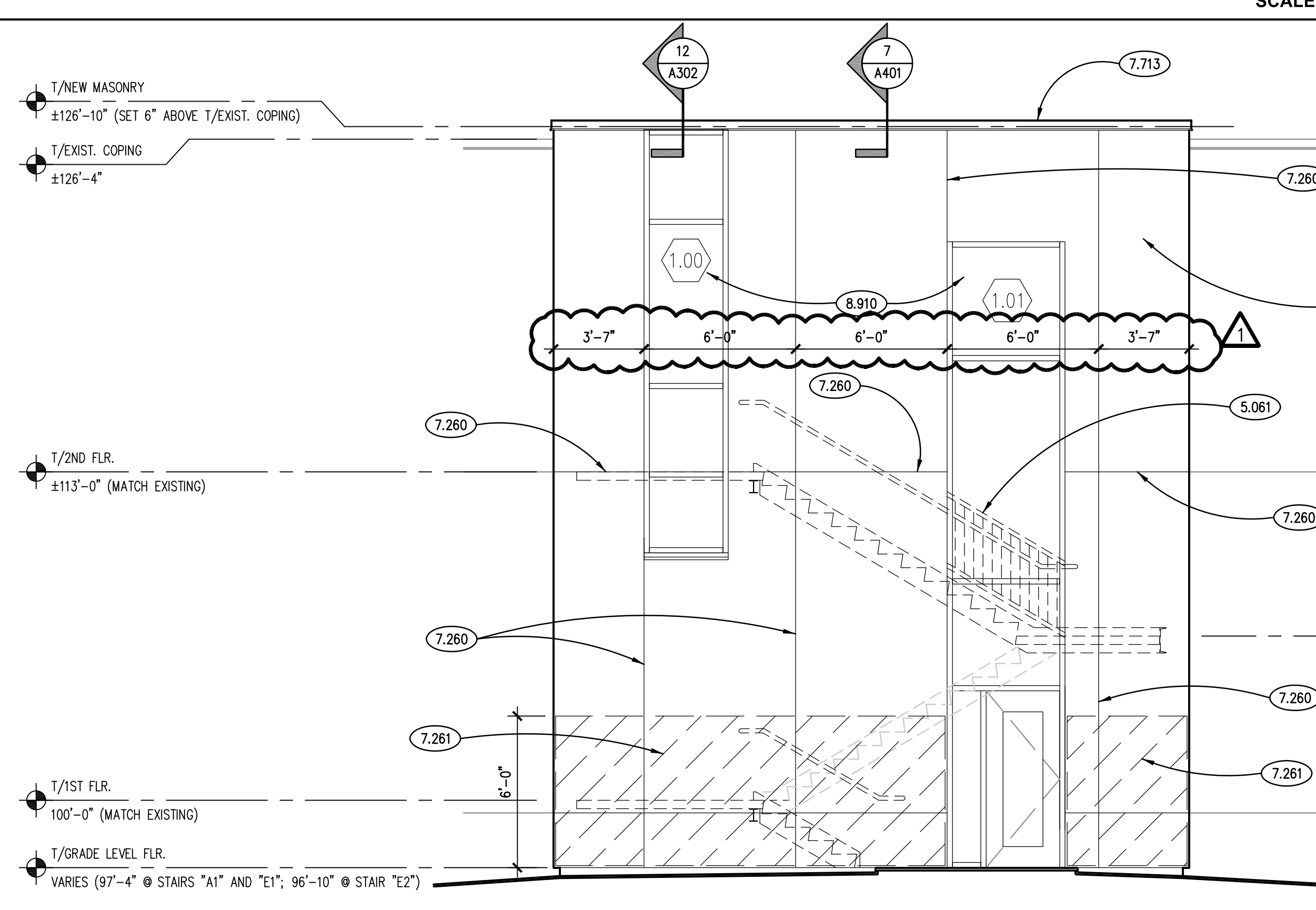
- 5.061 METAL FABRICATION: STEEL GUARD RAIL ASSEMBLY; REFER TO DRAWING A401; MOUNT GUARD RAIL ASSEMBLY BETWEEN JAMBS OF CURTAIN WALL MASONRY OPENING.
- 7.240 EXTERIOR INSULATION AND FINISH SYSTEM (EIFS): 3" INSULATION OVER DRAINAGE PLANE. REFER TO SPECIFICATIONS.
- 7.260 EIFS ASSEMBLY: V-GROOVE; REFER TO DETAIL 3 ON DRAWING A401.
- 7.261 EIFS ASSEMBLY: PROVIDE BOTH STANDARD REINFORCING MESH AND ULTRA-HIGH-IMPACT REINFORCING MESH IN THIS AREA.
- 7.713 METAL ROOF EDGE FLASHING: MATERIAL, THICKNESS AND FINISH AS SPECIFIED.
- 7.901 JOINT SEALER: EXPANSION JOINT SEALER; TYPE E-1; REFER TO SPECIFICATIONS.
- 8.112 STEEL DOOR: REFER TO DOOR AND FRAME SCHEDULE.
- 8.910 GLAZED ALUMINUM CURTAIN WALL SYSTEM: REFER TO SPECIFICATIONS.
- 8.915 ALUMINUM CURTAIN WALL ACCESSORY: PREFINISHED ALUMINUM FLASHING; 0.040" THICK; COLOR TO MATCH CURTAIN WALL.



STAIR ELEVATION 3
SCALE: 1/4" = 1'-0"



STAIR ELEVATION 2
SCALE: 1/4" = 1'-0"



STAIR ELEVATION 1
SCALE: 1/4" = 1'-0"

GENERAL NOTES

1. REFER TO DRAWING G100 FOR PROJECT GENERAL NOTES.
2. COORDINATE LOCATIONS OF WALL-MOUNTED MECHANICAL, PLUMBING AND ELECTRICAL ITEMS TO ENSURE NO OVERLAP.
3. COORDINATE LOCATION OF PROXIMITY READERS TO BE PROVIDED BY OTHERS, AND INTEGRATE SAME INTO EIFS.

ISSUED	DESCRIPTION	DATE
1	07/26/11 BID DOCUMENTS	
	08/16/11 ADDENDUM NO. 1	

JOB NO.	11-292-691
DRAWN	JMP
CHECKED	CDH
APPROVED	CDH
SHEET TITLE	
BUILDING ELEVATIONS	
SHEET NUMBER	

A301

