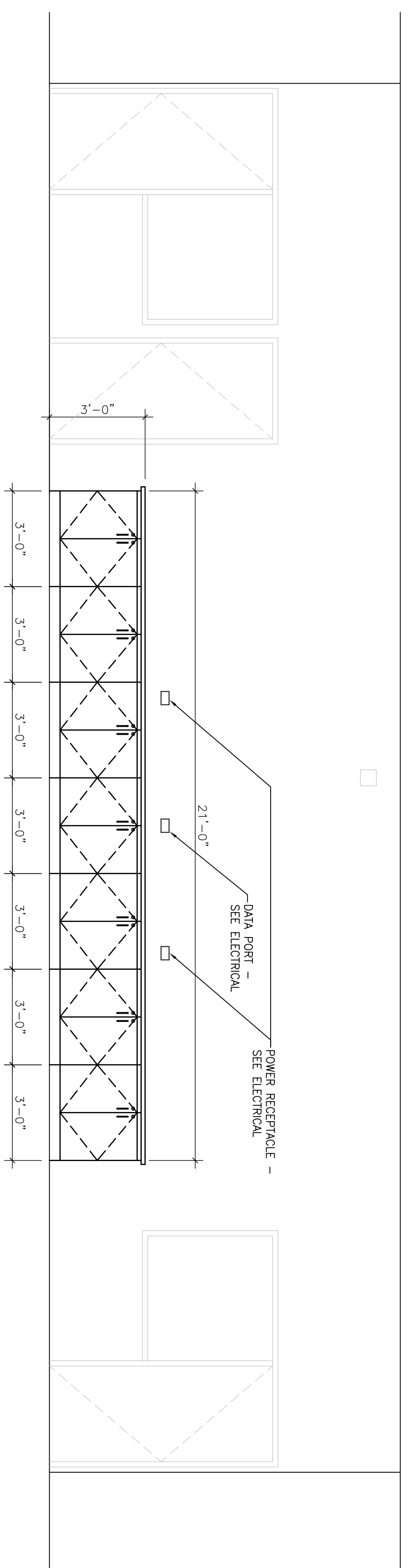
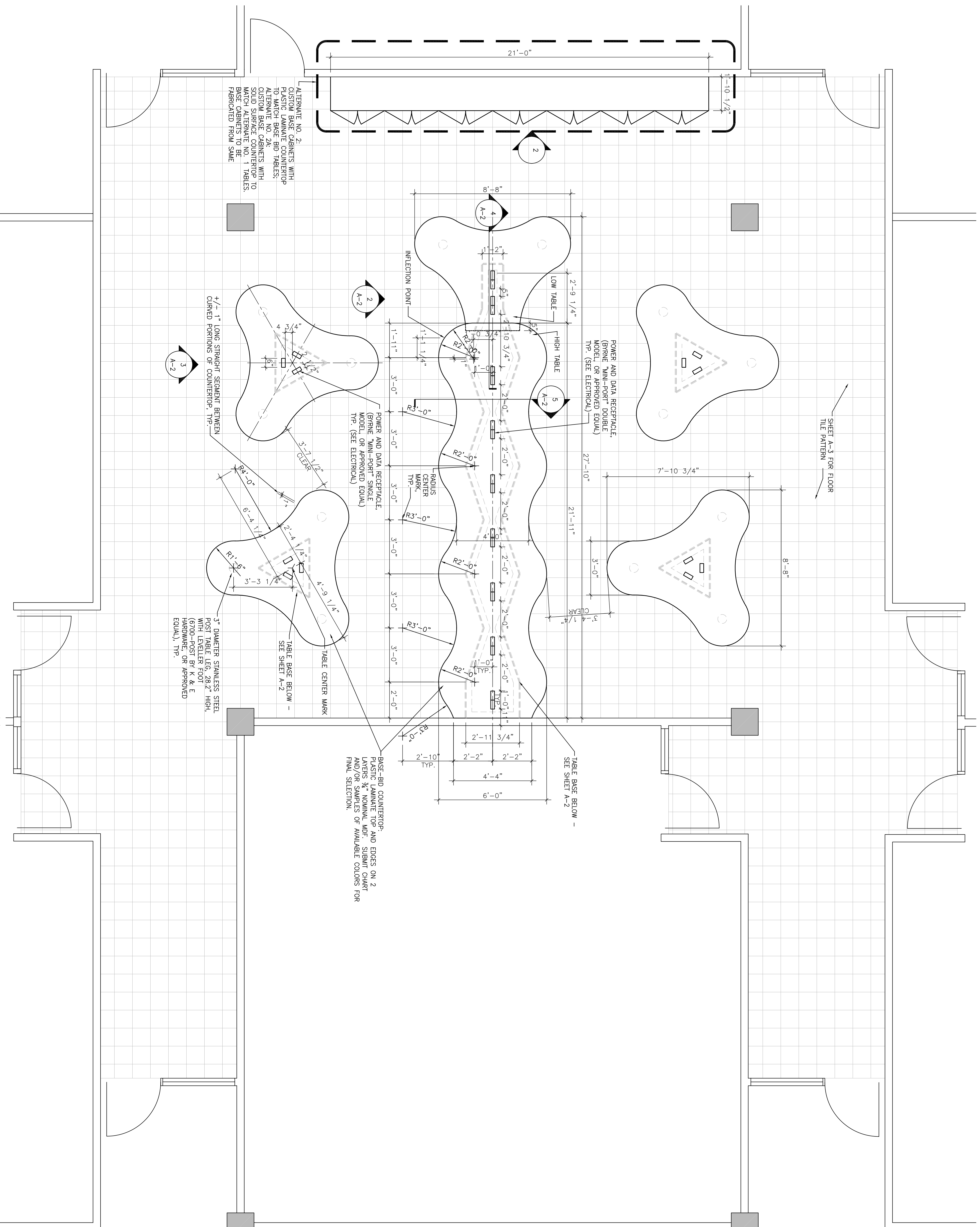




3 TYPICAL CABINET CONSTRUCTION (ALTERNATE NO. 2)
 FOR REFERENCE ONLY



2 ELEVATION - WEST WALL (ALTERNATE NO. 2 - STORAGE CABINET)
 SCALE: 3/8" = 1'-0"



1 FLOOR PLAN - T 2024
 SCALE: 3/8" = 1'-0"

HOH ARCHITECTS, INC.
 55 East Jackson Blvd.
 Chicago, IL 60604
 312.946.8131

GENERAL NOTES

1. CONTRACTOR TO PROVIDE A \$350 ALLOWANCE AS PART OF THE BASE BID. THE ALLOWANCE SHALL BE USED FOR THE PURCHASE OF ANY NECESSARY MATERIALS OR LABOR FOR THE INSTALLATION OF THE WEST WALL STORAGE CABINETS. THIS ALLOWANCE IS NOT TO BE USED FOR ANY OTHER PURPOSES.
2. CONTRACTOR TO PERFORM FLOOR CORING FOR NEW AND TO LEVEL ROOM FLOOR PRIOR TO THE INSTALLATION OF NEW FLOOR TILE.
3. ALL EXPOSED FASTENERS IN CASERWORK TO BE COUNTERSUNK FLUSH WITH AND PAINTED TO MATCH COLOR OF SURROUNDING MATERIAL.
4. CONTRACTOR TO SUBMIT SHOP DRAWINGS OF ALL CABINETS AND COUNTERTOP DETAILS FOR REVIEW AND APPROVAL BY OWNER PRIOR TO COMMENCEMENT OF FABRICATION.
5. CONTRACTOR TO SUBMIT COLOR SAMPLES AND/OR MATERIALS TO BE USED FOR THE CABINETS AND COUNTERTOPS FOR REVIEW AND APPROVAL BY OWNER PRIOR TO COMMENCING FABRICATION.
6. CONTRACTOR TO PROVIDE APPROPRIATE PROTECTIVE MEASURES TO ENSURE COMPLETION OF THE WORK.
7. CONTRACTOR SHALL REPAIR ANY SURROUNDING SURFACES THAT ARE SCRATCHED OR OTHERWISE DAMAGED AS A RESULT OF DEMOLITION AND/OR CONSTRUCTION ACTIVITY (INCLUDING BUT NOT LIMITED TO POLISHING AND PAINTING) TO MATCH.

ALTERNATES

ALTERNATE 1: ALL COUNTERTOPS TO BE CONSTRUCTED OF SOLID SURFACE MATERIAL (COLOR, PATTERN TO BE SELECTED BY OWNER). TOPS TO BE SHOP FABRICATED IN THE LABOR SHOP PACKAGED AS AS-BUILT MINIMIZE FIELD CUTS. EDGES TO BE ROUNDED TOP AND BOTTOM.

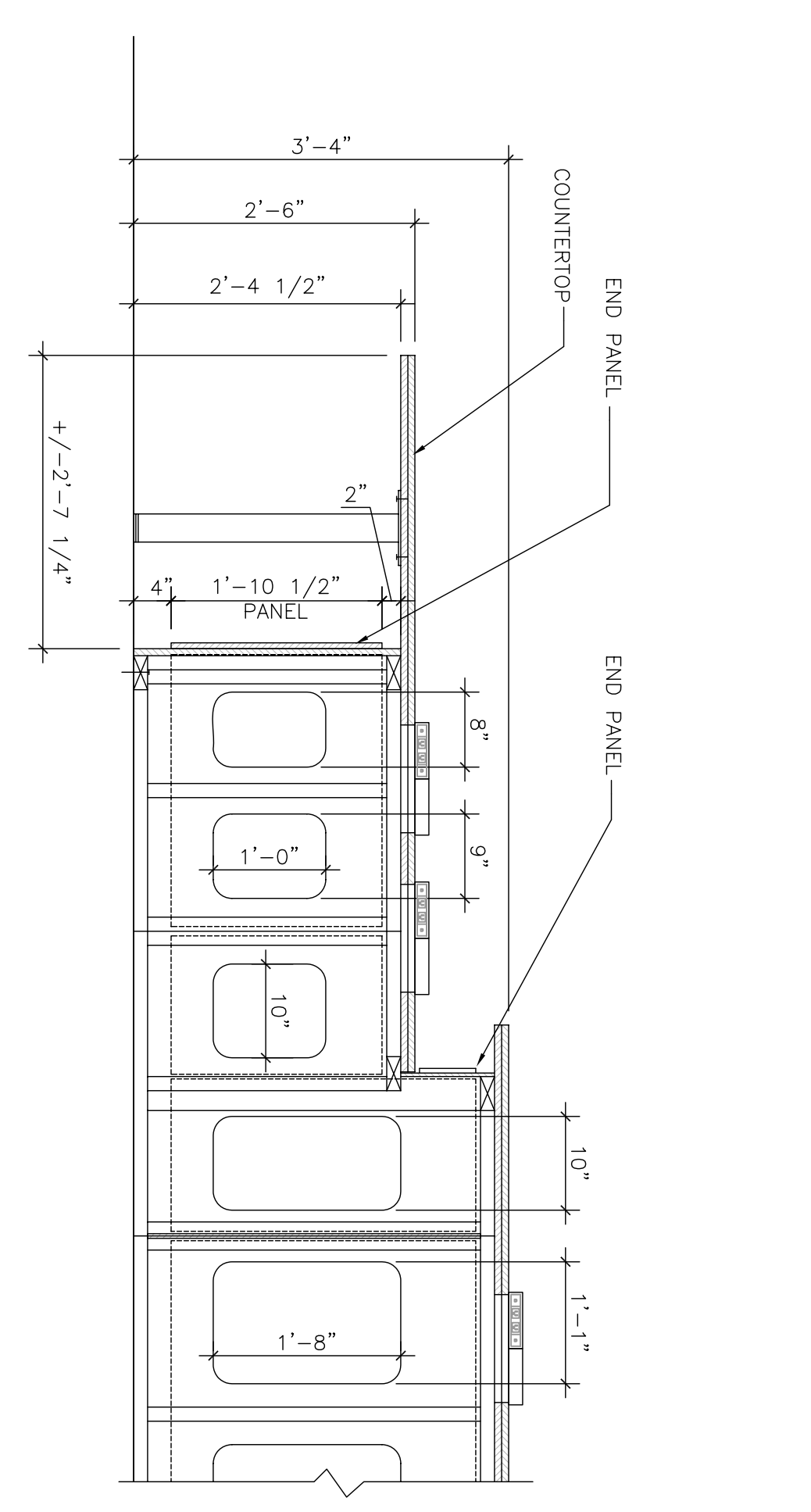
ALTERNATE 2: BASE CABINETS WITH LOCKING DOORS AND ADJUSTABLE SHELVES WITH COUNTERTOP ALONG WEST WALL PER DIMENSIONS ON DRAWINGS. AND ASSOCIATED ELECTRICAL (SEE E-SHEETS). BASE CABINET CONSTRUCTION TO BE SIMILAR TO PHOTOGRAPH IN DETAIL OF WHICH WAS SUBMITTED AND INSTALLED IN THE ROOM. CONTRACTOR TO MATCH COLOR TO BE SELECTED BY OWNER. COUNTERTOP TO MATCH THE SOLID SURFACE COUNTERTOPS OF THE REMAINING TABLES AND COUNTER IN ALTERNATE 1.

JOLIETT JUNIOR COLLEGE
 1215 HUBBOLT ROAD
 JOLIETT, IL 60431-8938

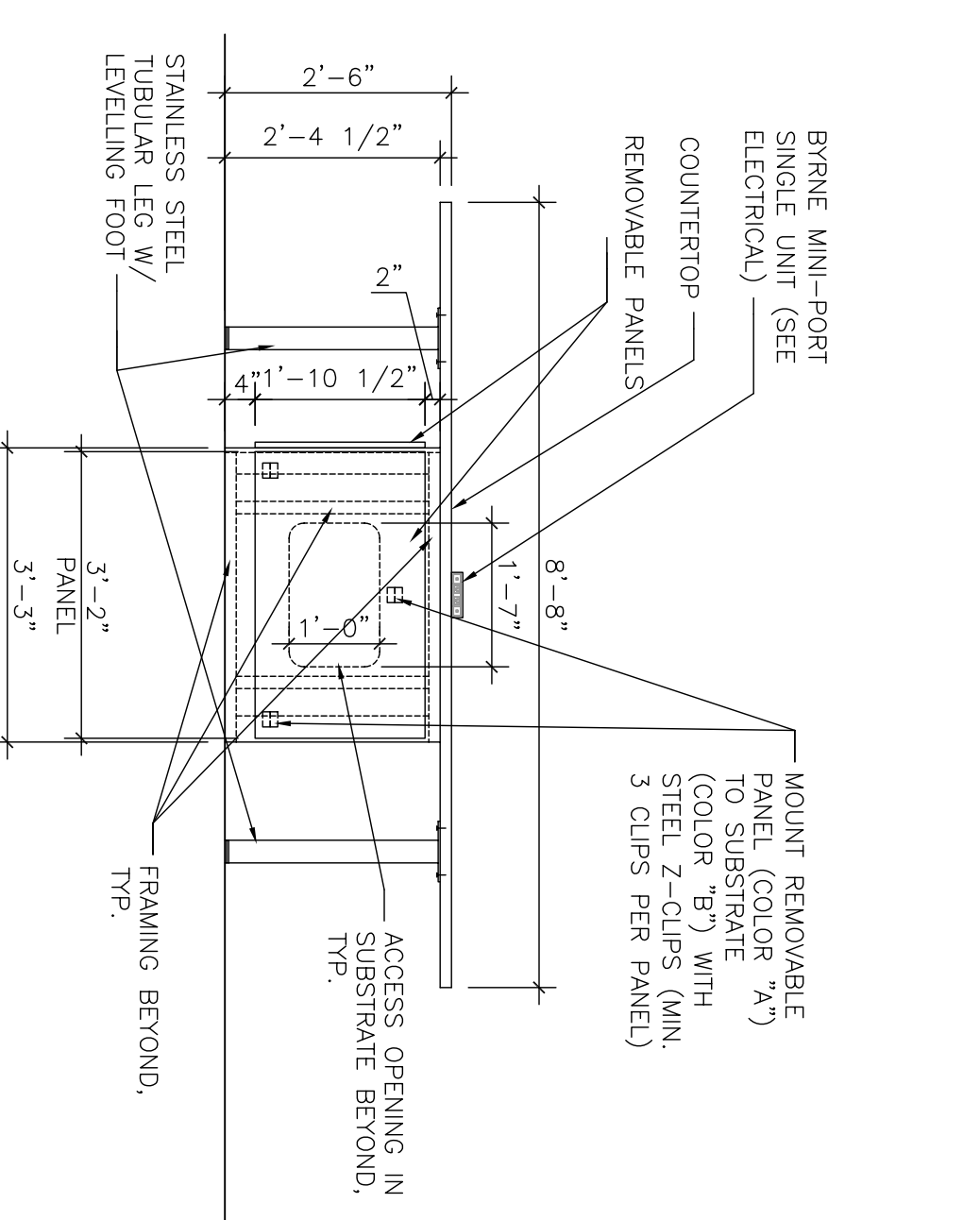
NO.	DATE	DESCRIPTION	BY
09.27.10	ISSUED FOR BID		
ISSUES / REVISIONS			

T-BUILDING ROOM 2024 COMPUTER LAB ARCHITECTURAL PLAN

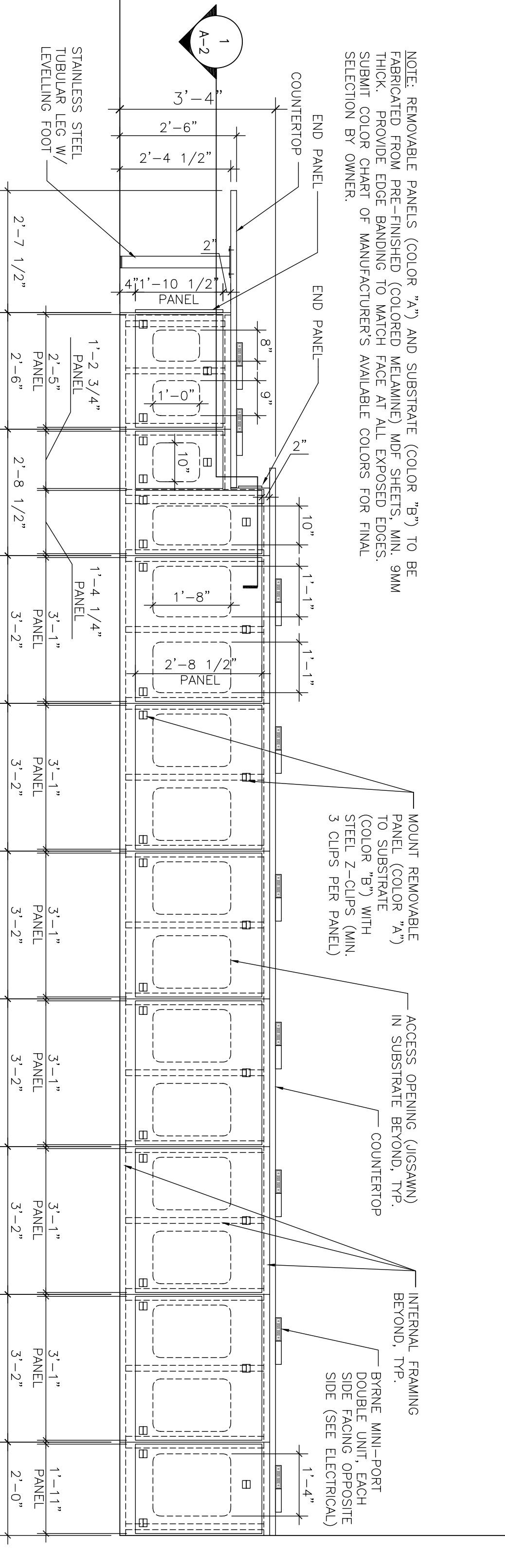
DESIGNED BY	3394	SHEET NO.	A-1
CHECKED BY			
APPROVED BY			
DATE			



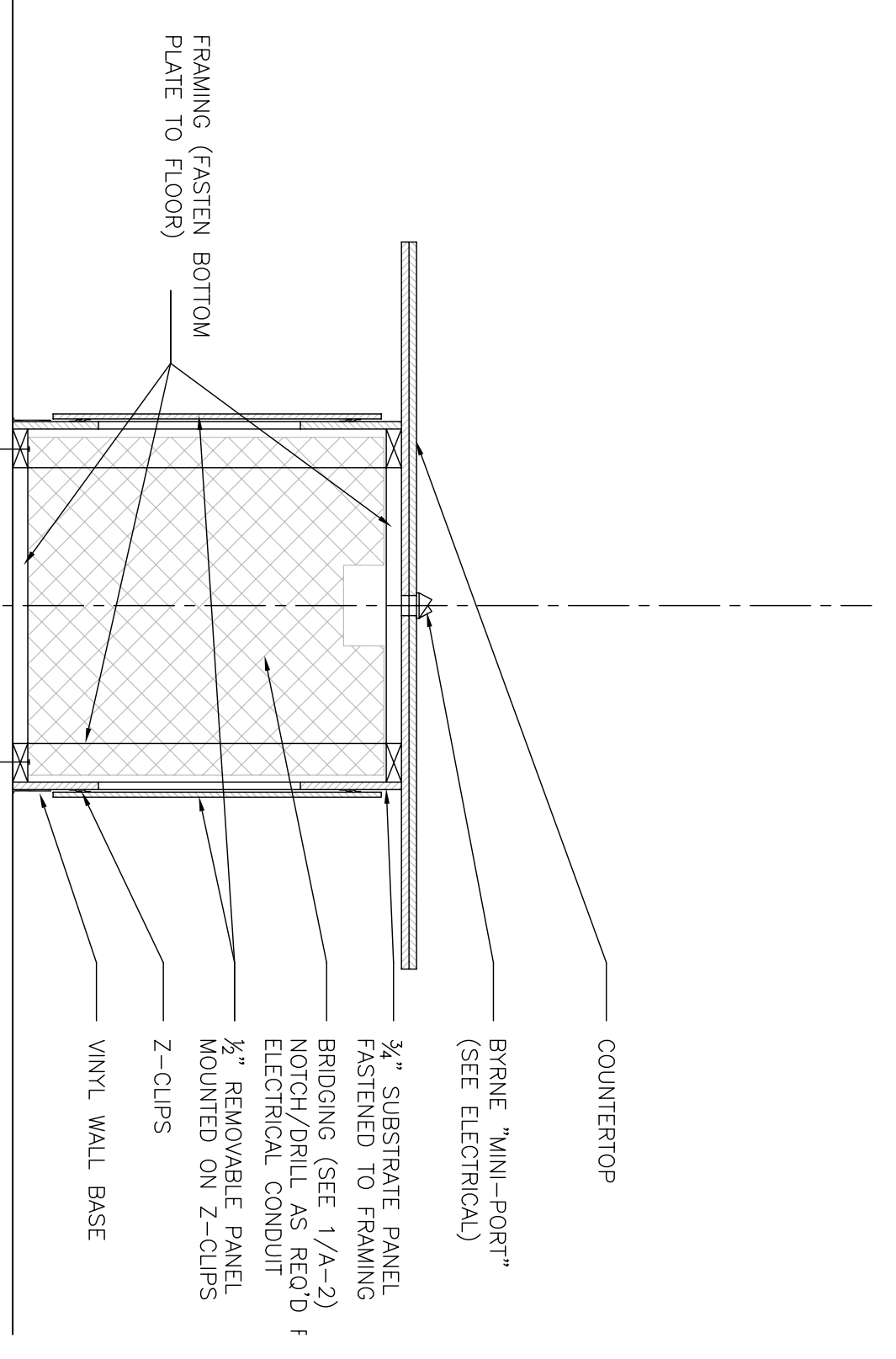
4 SECTION THROUGH LOWER AND UPPER COUNTER
 SCALE: 3/4" = 1'-0"



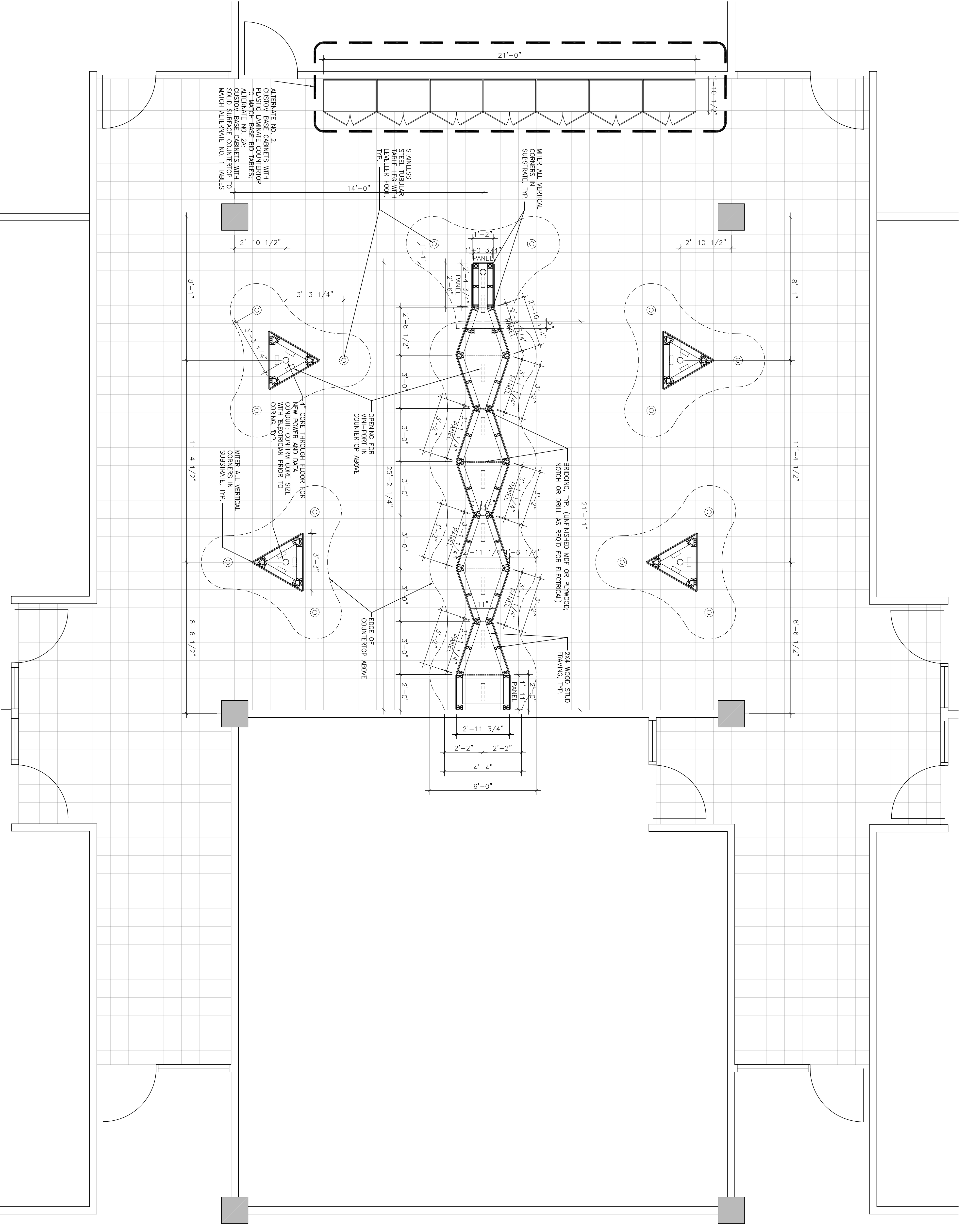
3 ELEVATION OF FREESTANDING TABLE
 SCALE: 1/2" = 1'-0"



2 ELEVATION (DEVELOPED) OF LONG COUNTER
 SCALE: 1/2" = 1'-0"



5 SECTION THROUGH UPPER COUNTER
 SCALE: 3/4" = 1'-0"



1 TABLE BASE PLAN - T 2024
 SCALE: 3/8" = 1'-0"

NO.	DATE	ISSUED FOR BID	DESCRIPTION	BY
09.27.10		ISSUED FOR BID		LMD
ISSUES / REVISIONS				

