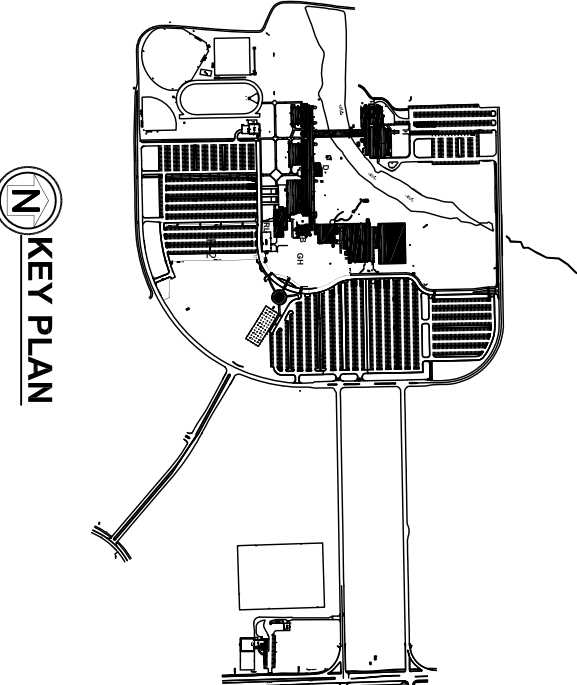


- NOTES:
1. SEE DRAWING E-D-04 FOR GENERAL NOTES AND DETAILS.
  2. SEE DOOR SECURITY SCHEDULE ON DRAWING E-D-04 FOR DOOR CONFIGURATION.

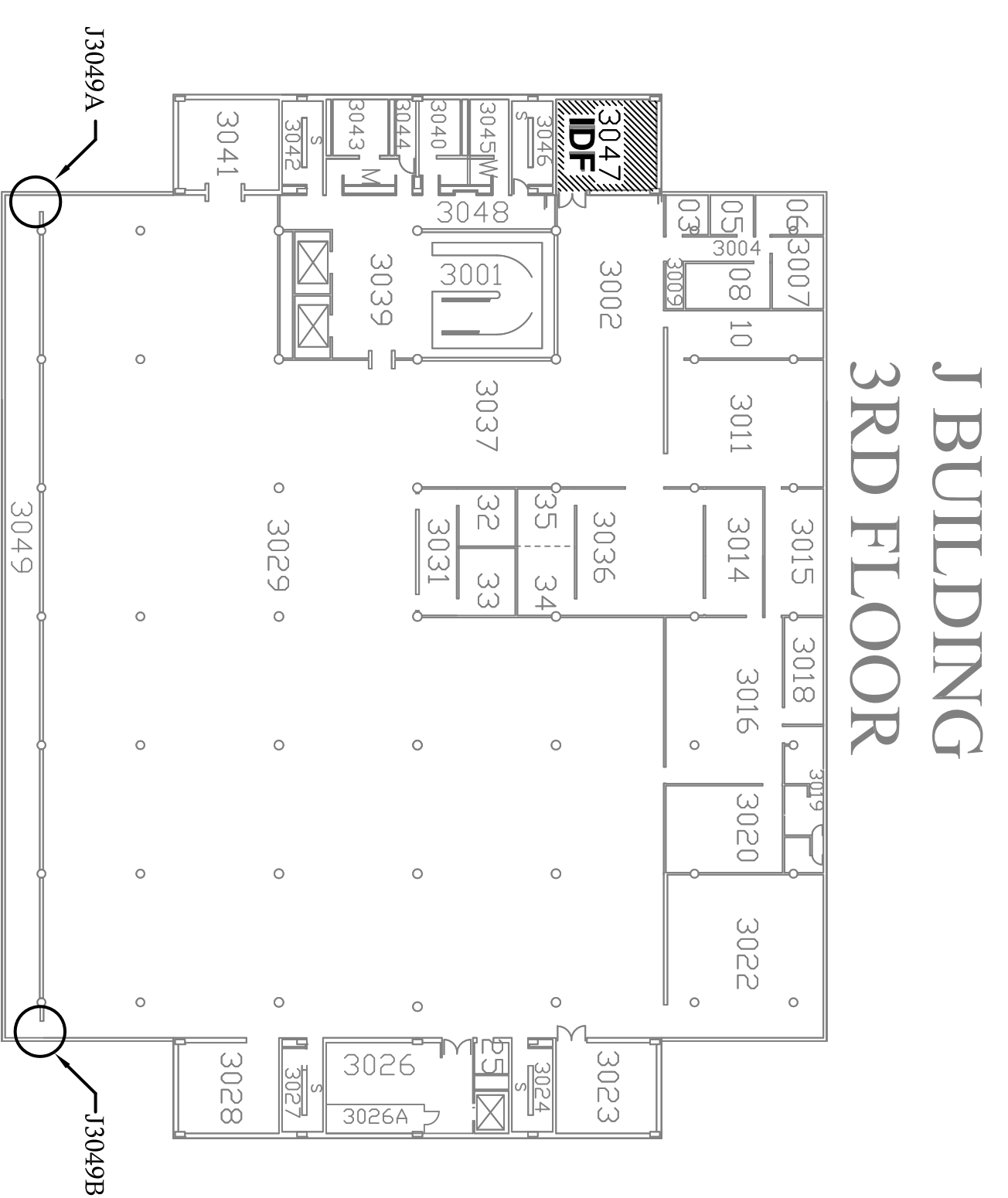


NO.	DATE	DESCRIPTION	BY
1	4/9/10	ISSUED FOR BID	HOH
<b>ISSUES / REVISIONS</b>			

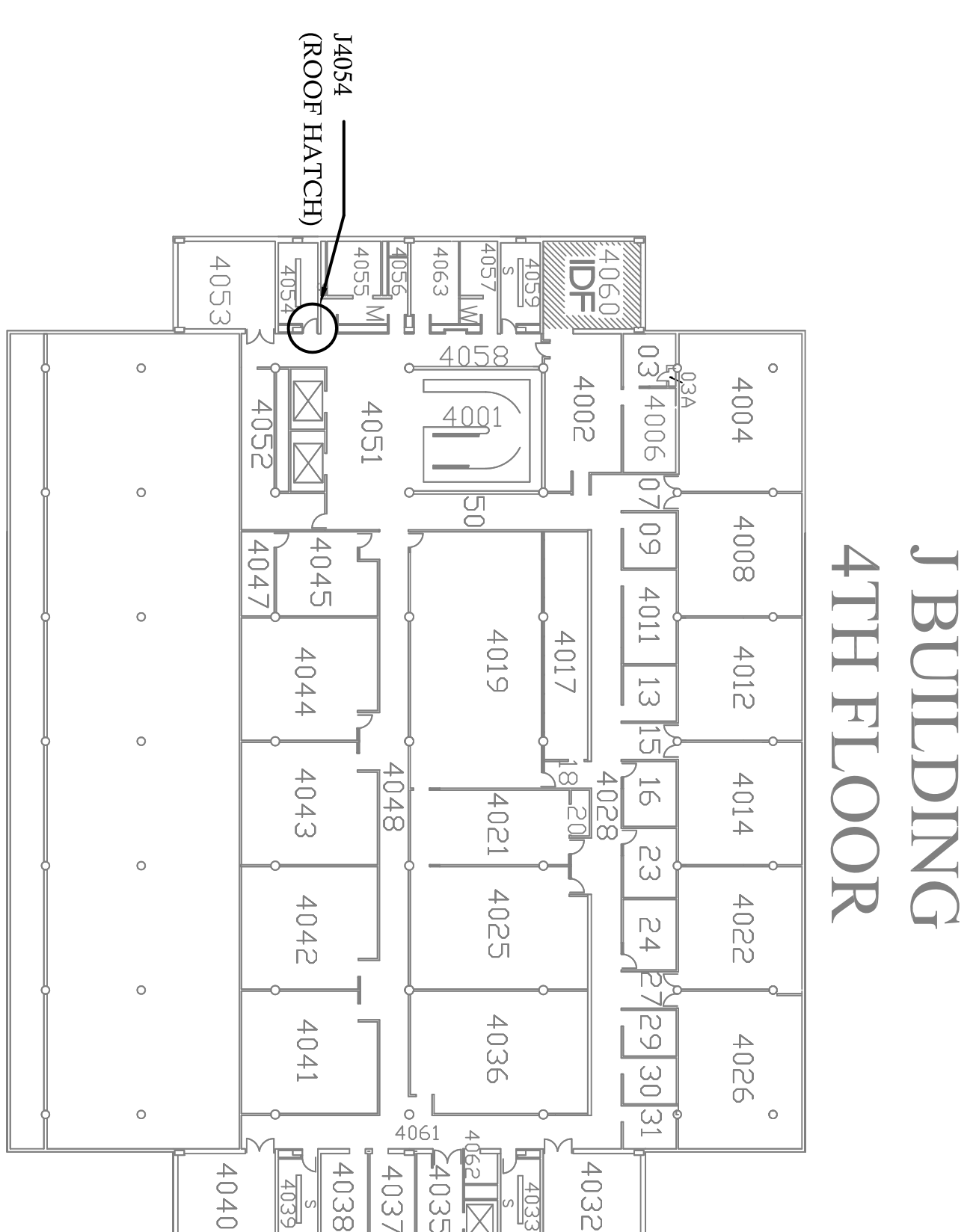


**SECURITY DOOR ACCESS PROJECT**

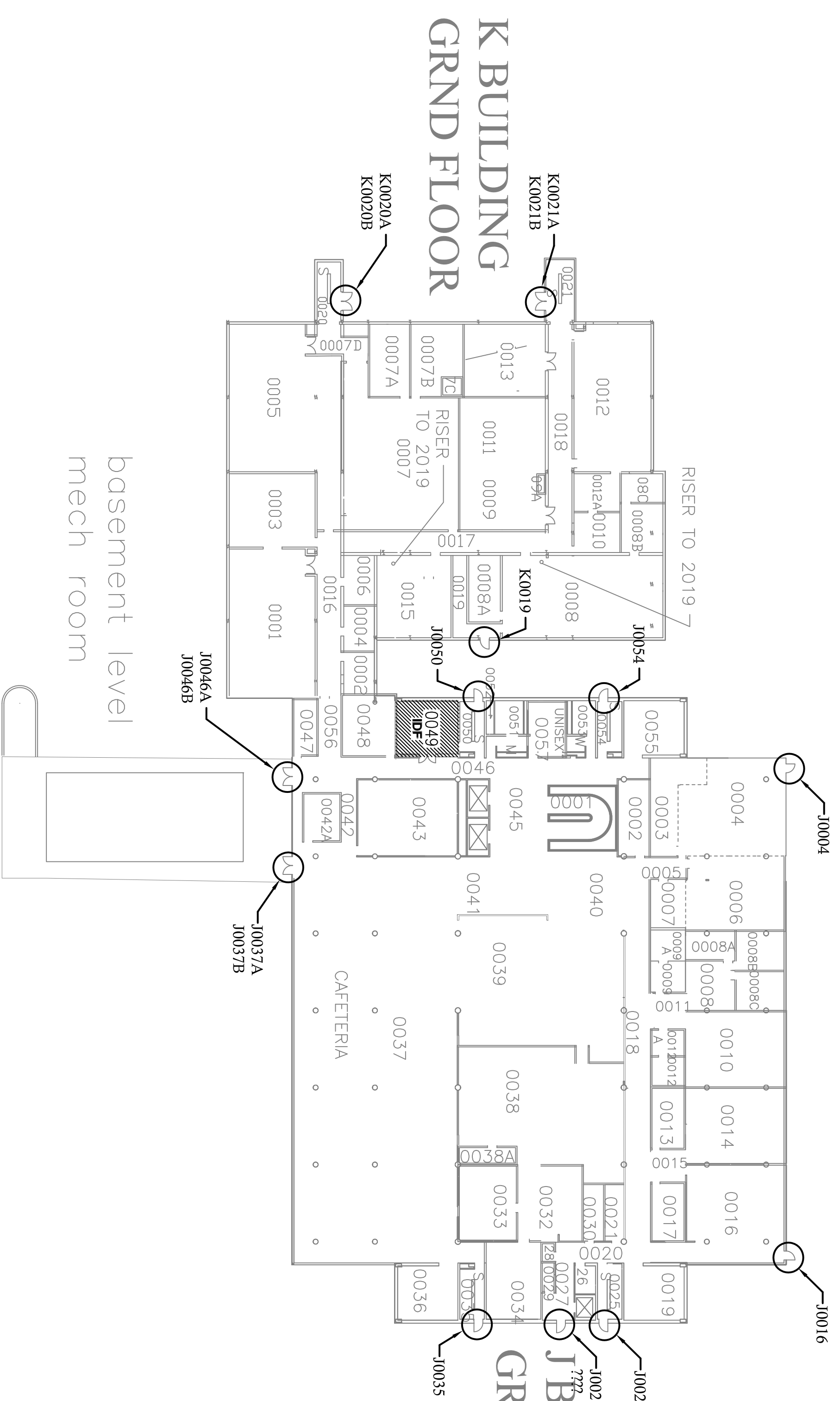
**MAIN CAMPUS 1ST FLOOR ELECTRICAL PLAN**



FLOOR 3



FLOOR 4



GRND FLOOR

- NOTES:
1. SEE DRAWING E-D-04 FOR GENERAL NOTES AND DETAILS.
  2. SEE DOOR SECURITY SCHEDULE ON DRAWING E-D-04 FOR DOOR CONFIGURATION.



SECURITY  
 DOOR ACCESS  
 PROJECT

MAIN CAMPUS  
 3RD, 4TH & G FLOOR  
 ELECTRICAL PLAN

E-D-03

**HOH**  
 HARRIS O. HESTER ARCHITECTS, INC.  
 52 East Jackson Blvd., Suite 600  
 Chicago, Illinois 60604  
 TEL: 312/244-8338 FAX: 312/244-3066

PROJECT NUMBER: 3291

**GENERAL NOTES**

**JOLIET**  
 JUNIOR COLLEGE  
 1215 HUSBOLT ROAD  
 Joliet, IL 60431-8938

NO.	DATE	DESCRIPTION	BY
1	4/5/10	ISSUED FOR BID	HOH
<b>ISSUES / REVISIONS</b>			

DRAWING PREPARED BY: JLN  
 CHECKED BY: JLN  
 SCALE: 1" = 30'-0"

SHEET NO. 3291

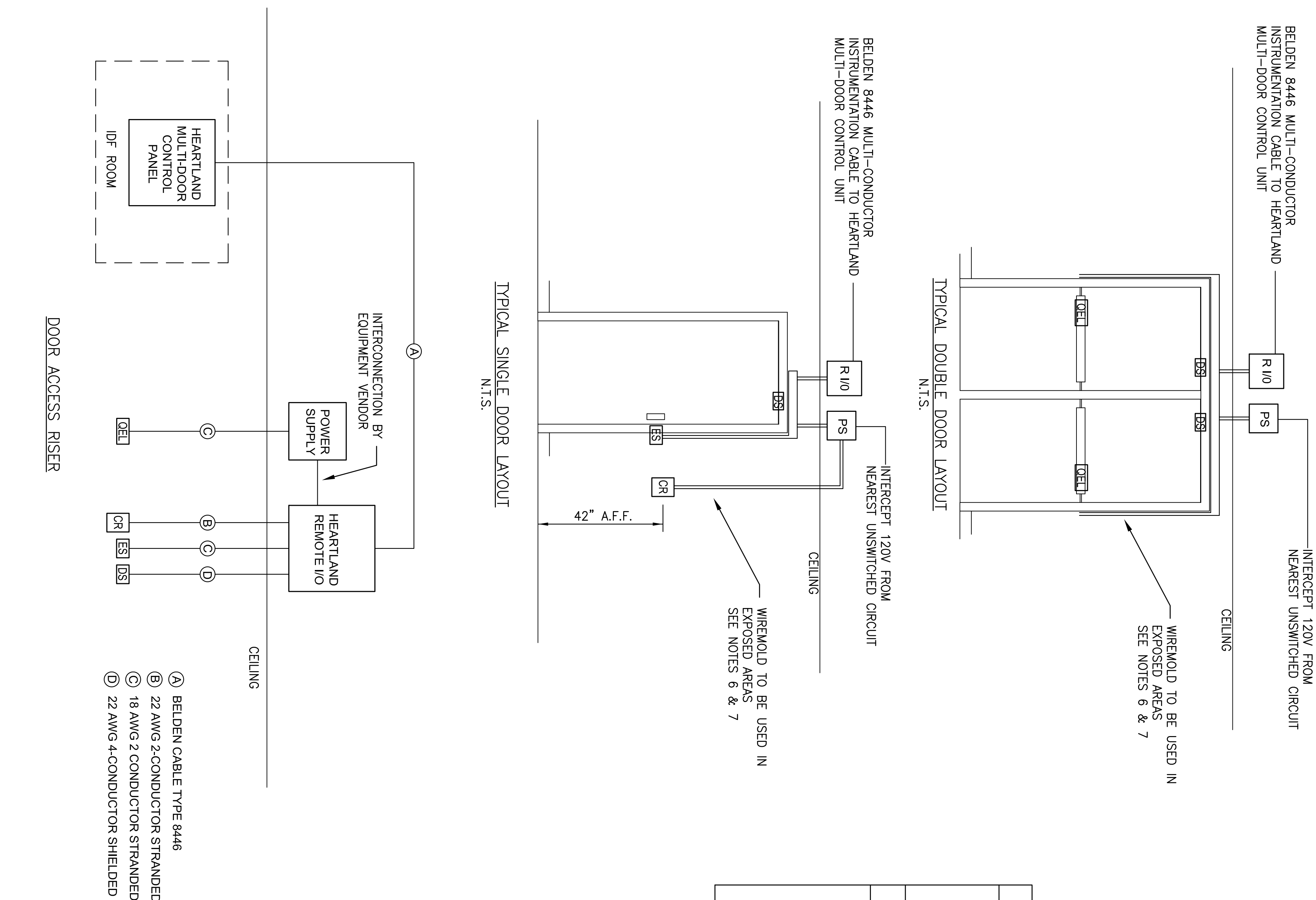
DATE: 4/5/10



DOOR SECURITY SCHEDULE						
DOOR NUMBER	TYPE	DOOR HARDWARE	DWG. NUMBER	NOTES		
A1001A	O	SINGLE/DOUBLE/OVERHEAD* REMOTE I/O PANEL DOOR CONTACT ELECTRIC DOOR STRIKE ELECTRIC QEL HARDWARE POWER SUPPLY PANEL PROX CARD READER	A1020	E-D-1		
A1001B	S		A1020	E-D-1		
A1003	S		A1020	E-D-1		
A1004A	D		A1020	E-D-1		
A1004B	D		A1020	E-D-1		
A1008	S		A1020	E-D-1		
A1010	S		A1020	E-D-1		
A1011A	D		A1020	E-D-1		
A1011B	D		A1020	E-D-1		
A1011C	S		A1020	E-D-1		
A2009	S		A1020	E-D-2		
A2016A	D		A1020	E-D-2		
A2016B	D		A1020	E-D-2		
A2017	R		A1020	E-D-2	ALTERNATE BID 1	
B1001	S		B2014	E-D-1		
B1006	S		B2014	E-D-1		
B1007A	D		B2014	E-D-1		
B1007B	D		B2014	E-D-1		
B1007C	S		B2014	E-D-1		
B1010A	D		B2014	E-D-1		
B1010B	S		B2014	E-D-1		
B1012	S		B2014	E-D-1		
B1014A	D		B2014	E-D-1		
B1014B	D		B2014	E-D-1		
B1018A	D		B2014	E-D-1		
B1018B	D		B2014	E-D-1		
B2012A	D		B2014	E-D-2		
B2012B	D		B2014	E-D-2		
B2012C	S		B2014	E-D-2		
B2016	R		B2014	E-D-2	ALTERNATE BID 1	
BSUBC	O		B2014	E-D-1		
C1001A	O		C2021	E-D-1		
C1001B	O		C2021	E-D-1		
C1001C	O		C2021	E-D-1		
C1001D	O		C2021	E-D-1		
C1007	O		C2021	E-D-1		
C1008A	O		C2021	E-D-1		
C1008B	O		C2021	E-D-1		
C1008C	S		C2021	E-D-1		
C1025	S		C2021	E-D-1		
C1026	S		C2021	E-D-1		
C1031	S		C2021	E-D-1		
C1071	S		C2021	E-D-1		
C1078A	D		C2021	E-D-1		
C1078B	D		C2021	E-D-1		
C2043	R		G2012	E-D-2	ALTERNATE BID 1	
D1005	S		D1002	E-D-1		
D1007A	S		D1002	E-D-1		
D1007B	D		D1002	E-D-1		
D1007C	D		D1002	E-D-1		
D1007D	S		D1002	E-D-1		
DSUBA	S		D1002	E-D-1		
E1011	S		D1002	E-D-1		
E1012	S		D1002	E-D-1		
E1016	S		D1002	E-D-1		
E1055	S		D1002	E-D-1		
E1056	S		D1002	E-D-1		
E1060	S		D1002	E-D-1		
E2024	R		D1002	E-D-2	ALTERNATE BID 1	
E2027	S		D1002	E-D-2		
E2038	S		D1002	E-D-2		
F1002A	D		G2012	E-D-1		
F1002B	D		G2012	E-D-1		
F1008A	D		G2012	E-D-1		
F1008B	D		G2012	E-D-1		
F1008C	S		G2012	E-D-1		
G1019	S		G2012	E-D-1		
G1022	S		G2012	E-D-1		
G1023	S		G2012	E-D-1		
G1041	S		G2012	E-D-1		
G1042	S		G2012	E-D-1		
G1052	S		G2012	E-D-1		
G2007A	D		G2012	E-D-2		
G2007B	D		G2012	E-D-2		
G2007C	D		G2012	E-D-2		
G2007D	D		G2012	E-D-1		
H1011A	S		K0049	E-D-1		
H1011B	S		K0049	E-D-X		
HSUBD	S		XXXXX	E-D-X		
HSUBD (HV)	S		XXXXX	E-D-X		

DOOR SECURITY SCHEDULE						
DOOR NUMBER	TYPE	DOOR HARDWARE	DWG. NUMBER	NOTES		
J0004	S	SINGLE/DOUBLE/OVERHEAD REMOTE I/O PANEL DOOR CONTACT ELECTRIC DOOR STRIKE ELECTRIC QEL HARDWARE POWER SUPPLY PANEL PROX CARD READER	J1014	E-D-3		
J0016	S		J1014	E-D-3		
J0025	S		J1014	E-D-3		
J0027	O		J1014	E-D-3		
J0035	S		J1014	E-D-3		
J0037A	D		J1014	E-D-3		
J0037B	D		J1014	E-D-3		
J0046A	D		J1014	E-D-3		
J0046B	D		J1014	E-D-3		
J0054	S		J1014	E-D-3		
J0054	S		J1014	E-D-3		
J1071A	S		J1014	E-D-1		
J1071B	S		J1014	E-D-1		
J1071C	D		J1014	E-D-1		
J1071D	D		J1014	E-D-1		
J1071E	D		J1014	E-D-2		
J2008	S		J1014	E-D-2		
J2010	S		J1014	E-D-2		
J3049A	S		J3047	E-D-3		
J3049B	S		J3047	E-D-3		
J4054	R		J3047	E-D-3	ALTERNATE BID 1	
K0019	S		K0049	E-D-3		
K0020A	D		K0049	E-D-3		
K0020B	D		K0049	E-D-3		
K0021A	D		K0049	E-D-3		
K0021B	O		K0049	E-D-1		
K1000A	O		K0049	E-D-2		
K2025	R		K0049	E-D-2	ALTERNATE BID 1	
T0101A	D		T0112	E-D-1		
T0101B	D		T0112	E-D-1		
T0102A	D		T0112	E-D-1		
T0102B	D		T0112	E-D-1		
T0102C	D		T0112	E-D-1		
T0102D	D		T0112	E-D-1		
T0104A	D		T0112	E-D-1		
T0104B	D		T0112	E-D-1		
T0121A	D		T0112	E-D-1		
T0121B	D		T0112	E-D-1		
T0160A	D		T0112	E-D-1		
T0160B	D		T0112	E-D-1		
T0253A	D		T0112	E-D-X		
T0253B	D		T0112	E-D-X		
T0254A	D		T0112	E-D-X		
T0254B	D		T0112	E-D-X		
T2012	S		T0112	E-D-2		
T2072	S		T0112	E-D-2		
V0113A	D		V1031	E-D-1		
V0113B	D		V1031	E-D-1		
V0115A	D		V1031	E-D-1		
V0115B	S		V1031	E-D-X		
V0140	S		V1031	E-D-X		
V0229	S		V1031	E-D-X		
V0236	S		V1031	E-D-X		
V1005A	D		V1031	E-D-1		
V1005B	D		V1031	E-D-1		
V1021A	D		V1031	E-D-1		
V1021B	D		V1031	E-D-1		
V1027A	D		V1031	E-D-1		
V1027B	D		V1031	E-D-2		
V0236	R		V1031	E-D-2	ALTERNATE BID 1	
	-			-		
	-			-		
	-			-		

(\*)  
 S = SINGLE DOOR  
 D = DOUBLE DOOR  
 O = OVERHEAD DOOR  
 R = ROOF HATCH



R10	SUPPLIED BY VENDOR MOUNTED BY CONTRACTOR
PS	HEARTLAND SYSTEMS REMOTE ACCESS I/O ENCLOSURE VON DUPRIN
PS	POWER SUPPLY FOR QEL VON DUPRIN
PS	SUPPLIED AND INSTALLED BY VENDOR
DS	DOOR SWITCH SECURITY TYPE DPS QUIET ELECTRIC LATCH VON DUPRIN TYPE QEL
QEL	ELECTRIC DOOR STRIKE HES INNOVATIONS SERIES 9600
ES	ELECTRIC DOOR STRIKE HES INNOVATIONS SERIES 9600
CR	PROX CARD READER

**GENERAL NOTES:**

- ALL WORK PERFORMED SHALL BE IN ACCORDANCE WITH THE NATIONAL ELECTRIC CODE AND ANY STATE OR LOCAL CODES WHICH MAY APPLY.
- CONTRACTOR SHALL RUN CONDUIT CONCEALED ABOVE CEILING OR IN UNFINISHED AREAS WHENEVER POSSIBLE. WHEN REQUIRED TO RUN THROUGH FINISHED AREAS, WIREMOLD SHALL BE USED.
- CONTRACTOR SHALL MOUNT VENDOR SUPPLIED MULTI-DOOR CONTROL PANEL IN THE IDP ROOM INDICATED ON THE DOOR SECURITY SCHEDULE.
- CONTRACTOR SHALL MOUNT REMOTE I/O PANEL AND THE QEL POWER SUPPLY CONCEALED ABOVE CEILING AT THE DOORS INDICATED ON THE DRAWING.
- CONTRACTOR SHALL INSTALL CONDUIT AND CABLE SYSTEM FROM THE IDP ROOM INDICATED ON THE DOOR SECURITY SCHEDULE TO DOORS INDICATED ON THE DRAWINGS.
- CONTRACTOR SHALL LEAVE SUFFICIENT CABLE COILED AT THE PARTICULAR DEVICE LOCATION FOR THE EQUIPMENT VENDOR TO MAKE THE FINAL TERMINATIONS.
- ALL ROUGHED IN WORK SHALL BE SUCH THAT ALL DOOR HARDWARE AND DEVICES CAN BE MOUNTED AND CONNECTED PER THE MANUFACTURERS INSTRUCTIONS.
- DOORS IDENTIFIED AS ROOF HATCHES IN THE DOOR SECURITY SCHEDULE ARE TO BE INCLUDED BY A SEPARATE BID NOTED AS "ALTERNATE BID 1".
- CONTRACTOR IS TO INCLUDE A \$10,000 ALLOWANCE FOR MISCELLANEOUS UNFORESEEN EXPENSES TO BE ALLOCATED AT THE DIRECTION OF JOLIET JUNIOR COLLEGE.

**HOH**  
 3291  
 1215 HOBOLT ROAD  
 JOIET, IL 60431-8938

MARK O. HESTER, ARCHITECT, INC.  
 52 East Jackson Blvd., Suite 600  
 Chicago, Illinois 60604  
 TEL: 312/246-8373 FAX: 312/246-2866

**GENERAL NOTES**

ISSUED FOR BID  
 4/9/10  
 DATE DESCRIPTION  
 NO. BY

**SECURITY DOOR ACCESS PROJECT**

**ELECTRICAL INSTALLATION DETAILS**

3291  
 SCALE AS NOTED  
**E-D-04**

KEY PLAN