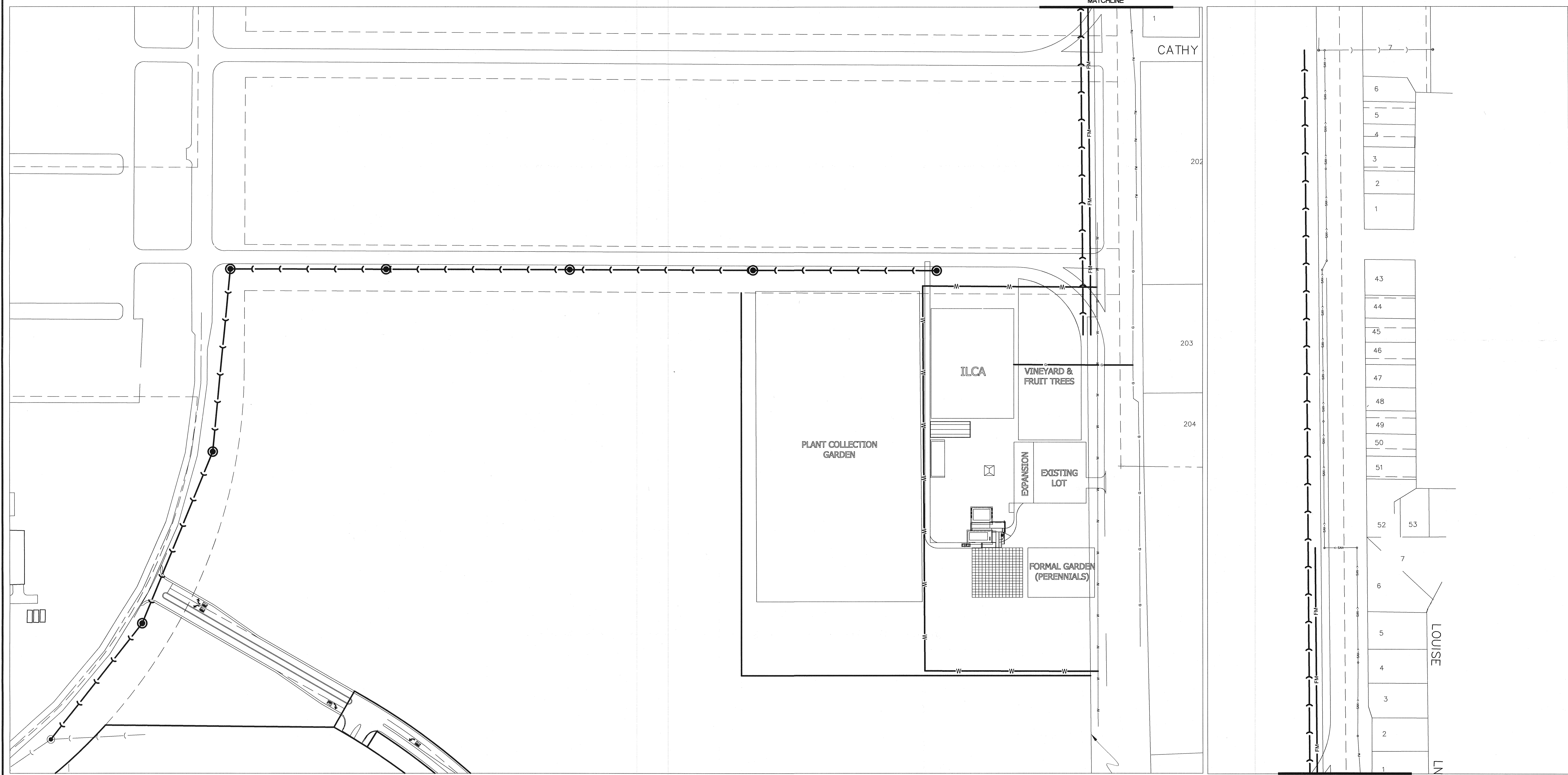
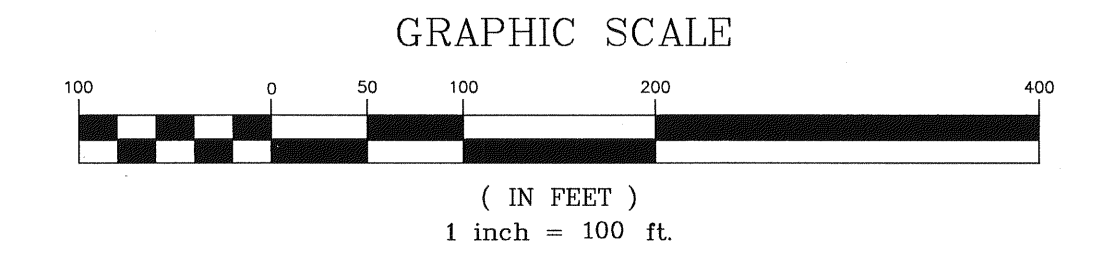
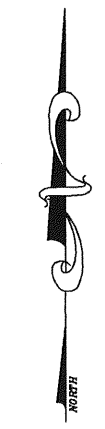


LEGEND

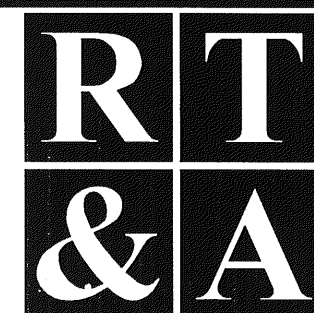
PROPOSED SANITARY SEWER	
PROPOSED FORCE MAIN	
PROPOSED WATER MAIN	
PROPOSED GAS SERVICE	
EXISTING WATER MAIN	
EXISTING SANITARY SEWER	
EXISTING FORCE MAIN	
EXISTING GAS MAIN	



REVISIONS

No.	DATE	DESCRIPTION	BY	No.	DATE	DESCRIPTION	BY

DOCUMENTATION:
 PROJECT No.: 20081062.00
 DATE: 08-05-08
 FIELD BOOK:
 DRAWN BY: DJZ
 CHECKED BY: JPH



Ruettiger, Tonelli & Associates, Inc.
 Surveyors • Engineers • Planners • Landscape Architects • G.I.S. Consultants
 2174 ONEIDA STREET 2603 S. WASHINGTON STREET - SUITE 170
 JOLIET, ILLINOIS 60435 NAPERVILLE, ILLINOIS 60565
 PH. (815) 744-6600 FAX (815) 744-0101 PH. (630) 420-7740 FAX (630) 420-7741

PROJECT TITLE:
**JOLIET JUNIOR COLLEGE
 JOLIET, ILLINOIS**

DRAWING TITLE:
**PRELIMINARY
 SANITARY SEWER, WATERMAIN
 AND GAS MAIN
 EXTENSIONS EXHIBIT**

DRAWING No.
308-1062-EXHIBIT
 SCALE:
1" = 100'
 "ENGINEERING DEPARTMENT"
SHEET 01 OF 01