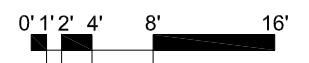
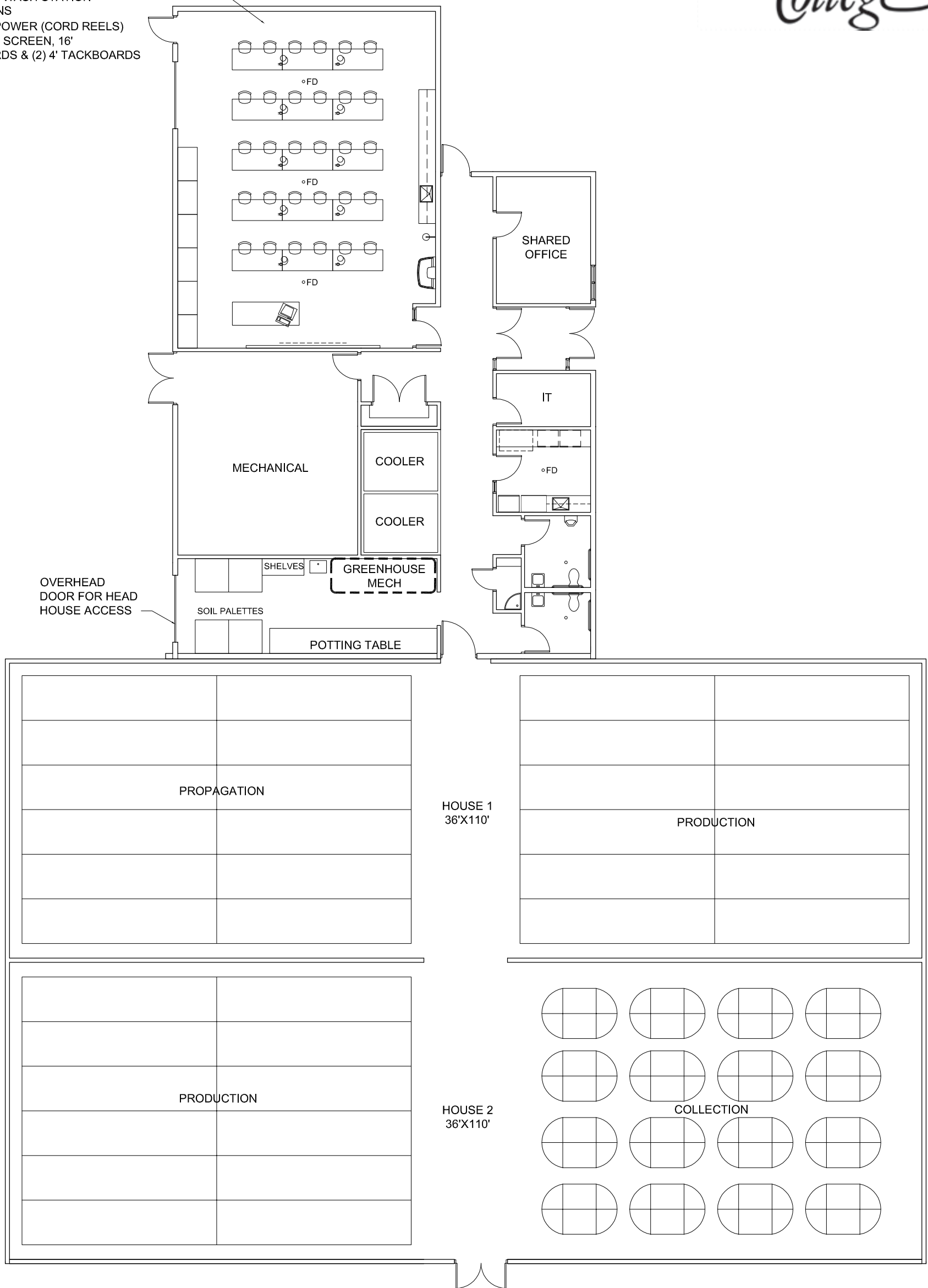


MULTIPURPOSE

- 30"x72" MOBILE STUDENT TABLES
- FORESTRY CLIMBING ROPES
- EMERGENCY SHOWER
- OVERHEAD DOOR FOR EQUIPMENT ACCESS
- HANDS FREE WASH STATION
- FLOOR DRAINS
- OVERHEAD POWER (CORD REELS)
- PROJECTION SCREEN, 16'
- MARKERBOARDS & (2) 4' TACKBOARDS



GREENHOUSE BUILDING - PROPOSED FLOOR PLAN

August 6, 2008

