

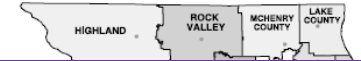
# Master Facilities Plan Phase I & II – April 2011 Program Update



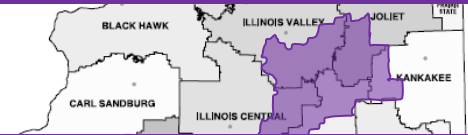
<b>A</b>	<b>Current Budget (Phase 1)</b>	<b>\$70,776,043</b>
<b>B</b>	<b>Current Budget (Phase 2)</b>	<b>\$89,000,000</b>
<b>C</b>	<b>Total Budget (A+B)</b>	<b>\$159,776,043</b>
<b>D</b>	<b>Committed Cost</b>	<b>\$115,556,932</b>
<b>E</b>	<b>Estimate to Complete</b>	<b>\$43,508,777</b>
<b>F</b>	<b>Approved Change Orders to Date</b>	<b>\$630,758</b>
<b>G</b>	<b>Anticipated Cost (D+E+F)</b>	<b>\$159,696,466</b>
<b>H</b>	<b>Variance Budget vs Anticipated</b>	<b>\$(79,577)</b>
<b>I</b>	<b>Estimated Pending Changes</b>	<b>\$(1,242)</b>

# District 525 and Minority/Women Participation

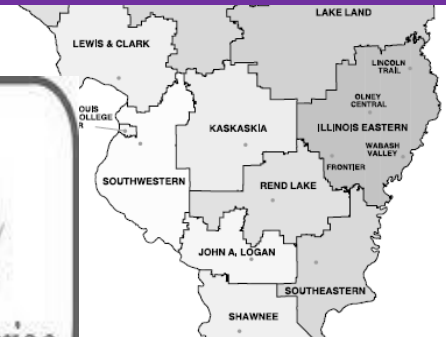
Illinois



39.5% In District 525 with current and pending awards



64 Prime and Sub Trades from District 525 with current and pending awards



4% MBE/WBE Participation of Awarded Cost to Date

15 MBE/WBE Prime and Sub Trades and Suppliers



## BUDGET

Original Budget	- \$42,000,000
Projected Final Cost	- \$40,324,000
Balance	- \$ 1,676,000

## SCHEDULE

Projected Completion – 1 <sup>st</sup> Flr.	- 20 <sup>th</sup> June, 2011
Projected Completion – 2 <sup>nd</sup> Flr.	- 23 <sup>rd</sup> June, 2011
Projected Completion – 3 <sup>rd</sup> Flr.	- 30 <sup>th</sup> June, 2011

## WORK IN PROGRESS

- Ceiling Installation
- Installing Cabinets
- Interior Glazing
- Rails

## ISSUES

- Misc. Metal Default



# Project Update – ‘J’ Building Renovation

## BUDGET

Current Budget - \$3,350,000

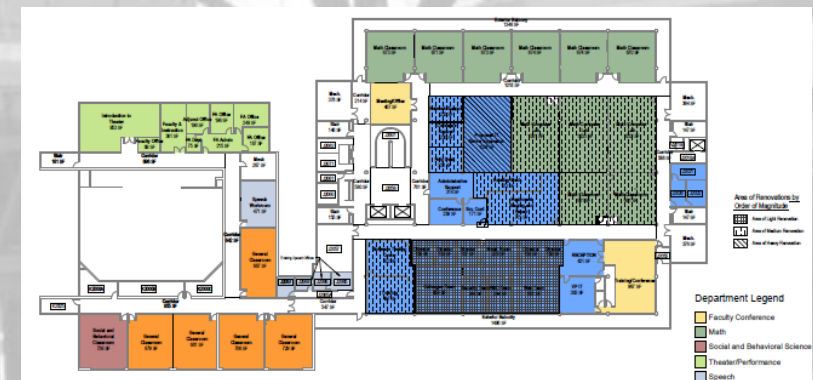
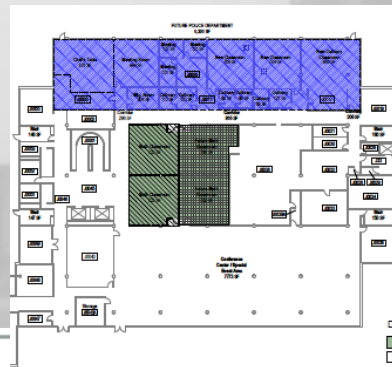
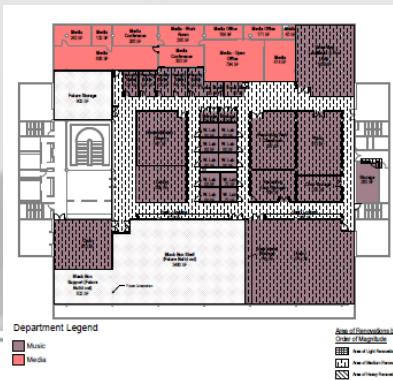
## SCHEDULE

- Complete Design - April 1, 2011
- Receive Bids - June, 2011
- Begin Work - July, 2011



## WORK IN PROGRESS

- Completing Construction Drawings



## SCHEDULE

- Start Grading Work - April, 2011
- Complete P1 Parking Lot - October, 2011

## WORK IN PROGRESS

- Landscaping Bids Award
- Demo Green Buildings



## BUDGET

Original Budget	- \$45,000,000
Construction Budget	- \$35,885,247
Last Const. Estimate	- \$31,256,500
Construction Cost Difference	- \$ 4,628,747
Eqpt/ Furniture Cost Difference	- \$ (110,000)



## SCHEDULE

- Footings & Foundation – Week of April 4<sup>th</sup>
- Steel Erection – Week of April 25<sup>th</sup>
- Steam Line Installation – Week of May 16<sup>th</sup>



## BUDGET

Original Budget - \$20,000,000

Construction Budget - \$15,986,480

Hard Bid - \$15,867,617

Eqpt./ Furn. Cost Difference - \$ (310,000)\*

- \*Does not include start up equipment cost

## SCHEDULE

Steel Erection – April 7<sup>th</sup>, 2011

Building Enclosure – August 2011

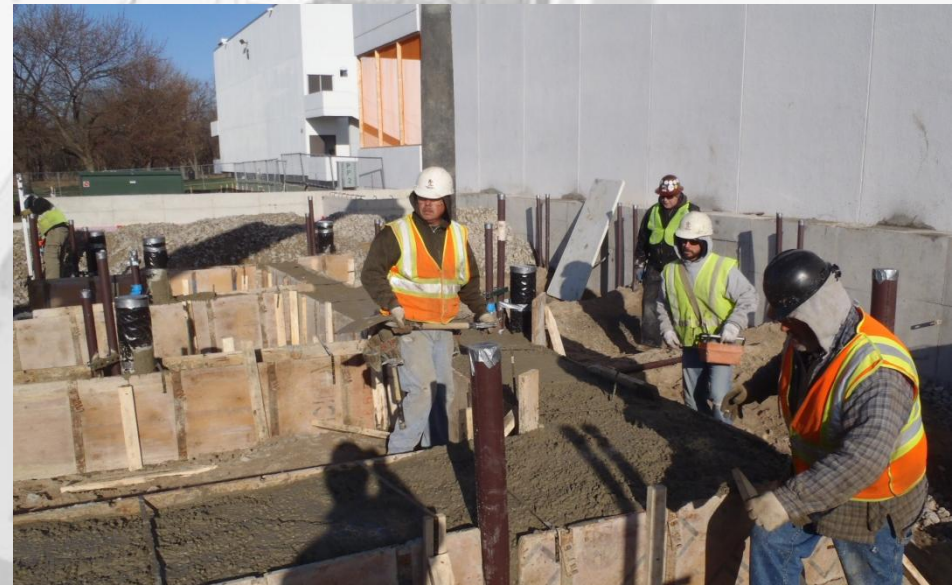
Phase 1 Occupancy - Dec 2011-Jan 2012

## Work in Progress

- Pouring Foundations and Footings
- Underground Mechanical Installation

## ISSUES

- Bond Claim



## BUDGET

Original Budget	- \$ 5,000,000
Projected Final Cost	- \$ 5,000,000
Balance	- \$ 0
Eqpt. Cost Difference	- \$ (161,500)



## SCHEDULE

Projected Completion - 30<sup>th</sup> July, 2011

## WORK IN PROGRESS

- Slab on Grade
- Overhead Mechanical Work
- Classroom Finishes



# Project Update – Signage & Wayfinding

## BUDGET

Current Estimate - \$ 1,351,880

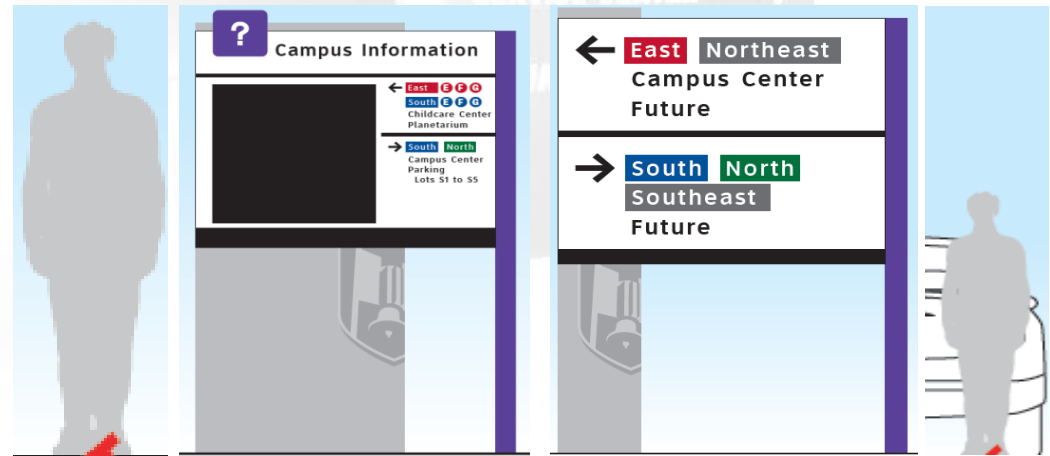
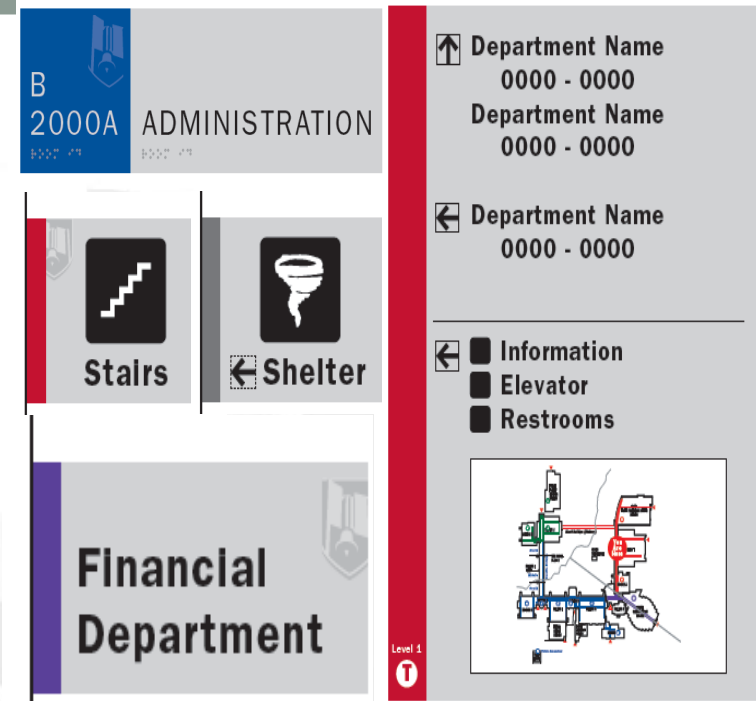
## SCHEDULE

Campus Center – Installation - May, 2011

Exterior Campus – Installation - July, 2011

## WORK IN PROGRESS

- Shop Drawings
- Fabricate Sign Mock-ups



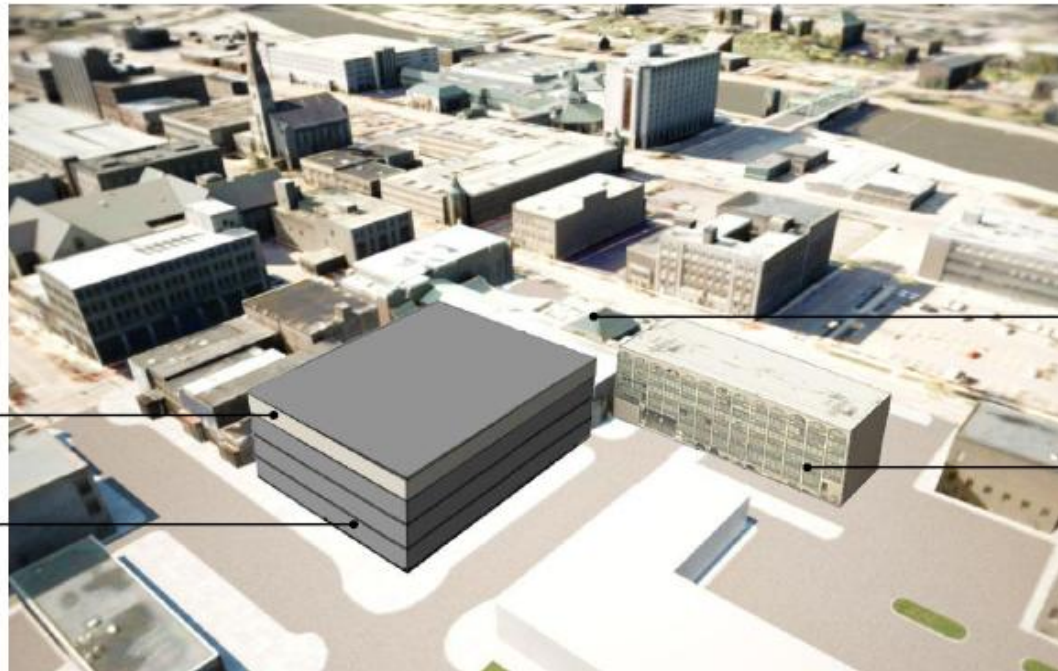
## BUDGET

Budget - \$ 42,000,000

White Bldg. Demo Bids - \$ 370,000

## ISSUES

CDB Funding



**FUTURE**  
BUILD OUT AT  
4<sup>TH</sup> FLOOR  
25,000 GSF

**CURRENT**  
PHASE 1  
BUILD OUT  
60,000 GSF

**CURRENT**  
RENOVATE  
RENAISSANCE  
CENTER  
27,911 GSF

**CURRENT**  
EXISTING HOTEL  
TO REMAIN  
35,151 GSF



Questions?

