

TUITION AND FEES AT JOLIET JUNIOR COLLEGE, WITH COMPARISONS

Contents

- 1 2008-09 Tuition and Fees at Community Colleges
- 2 Tuition and Fees at Illinois Community Colleges, 2000-2009
- 3 Annual Percent Change in Tuition and Fees at Community Colleges, 2001-2009
- 4 Tuition and Fees Tables, 2000-2009
- 5 Net Price - what students actually pay for college
- 6 Illinois Community Colleges Tuition Table, 2000-2009
- 7 Illinois 4-Year Public Tuition Table, 2000-2009
- 8 Illinois 4-Year Private Tuition Table, 2000-2009

*Tuition and fee data assumes student enrolled in 30 hours in an academic year.

TUITION AND FEES AT JOLIET JUNIOR COLLEGE, WITH COMPARISONS

SUMMARY

At \$2,640, JJC tuition and fees are lower than its peer group, suburban colleges, and national average (see Chart 1).

JJC's tuition increases have been much lower in the last five years than other colleges (see Charts 2 and 3).

JJC's tuition is much lower than the Illinois average for 4-year public (\$9,215) and 4-year private (\$23,480) institutions. By attending JJC for their first two years of college instead of a 4-year public or private college and assuming a student does not receive financial aid, a student can save \$13,150 or \$41,680 respectively (see page 4, Tuition tables).

Tuition is not an accurate indicator of what students actually pay because many students receive financial aid. Net price is calculated as:

$$\text{Net price} = \text{posted tuition and fees} - \text{financial aid received}$$

Research shows if eligible students apply for financial aid, half of the Illinois population will pay nothing for tuition, fees, and books at JJC. Additional research shows that while tuition has increased at a faster pace than inflation, net price for low-income students has not witnessed a significant increase. This suggests that increasing the number of students who receive financial aid could be a more equitable and efficient method of enhancing affordability for low-income students than low tuition (see page 5 and related research).

Tuition and fee information for all Illinois public and private institutions is listed in tables at the end of this document.

Chart 1
2008-09 Tuition and Fees at Community Colleges

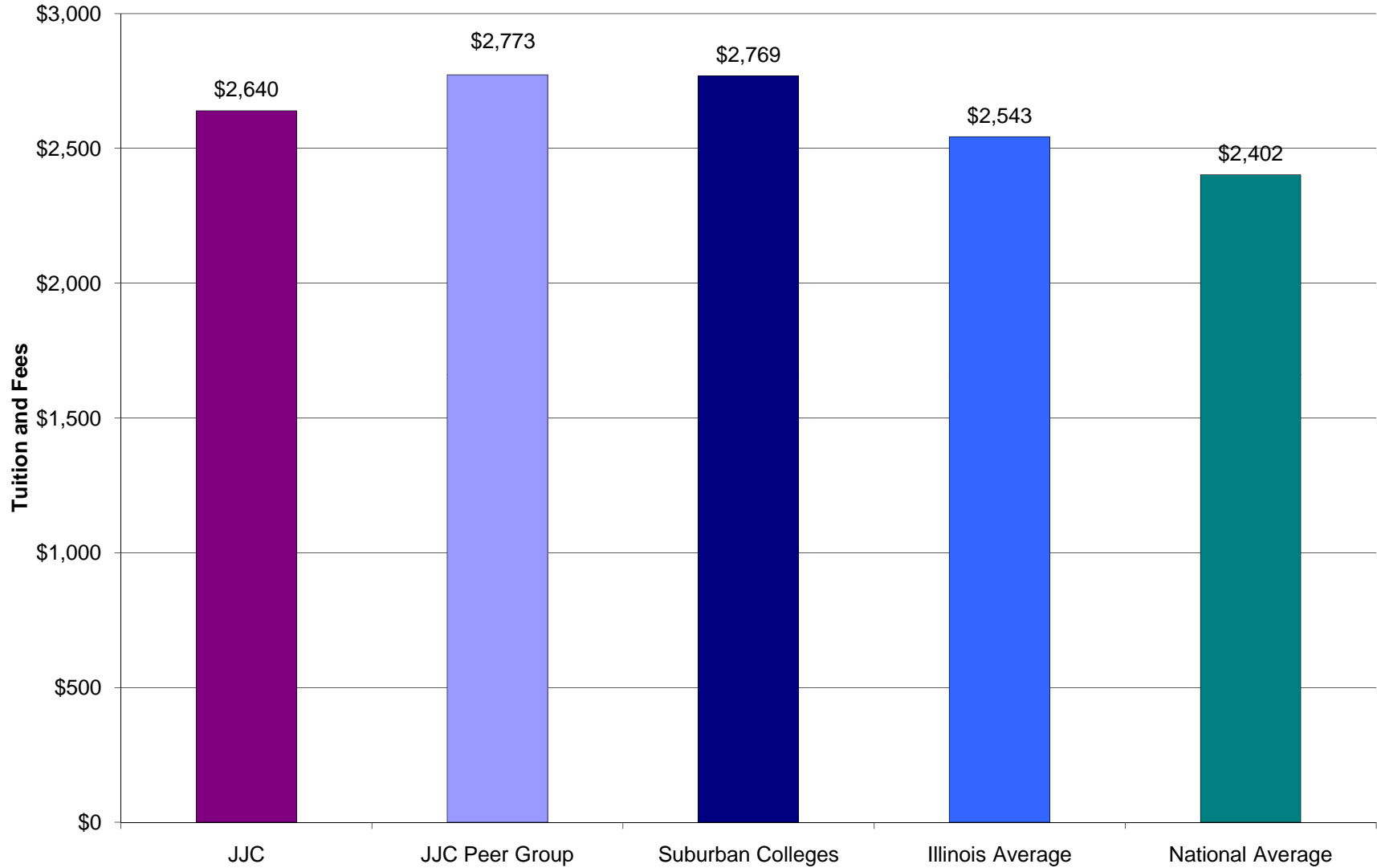


Chart 2
Tuition and Fees at Illinois Community Colleges, 2000-2009

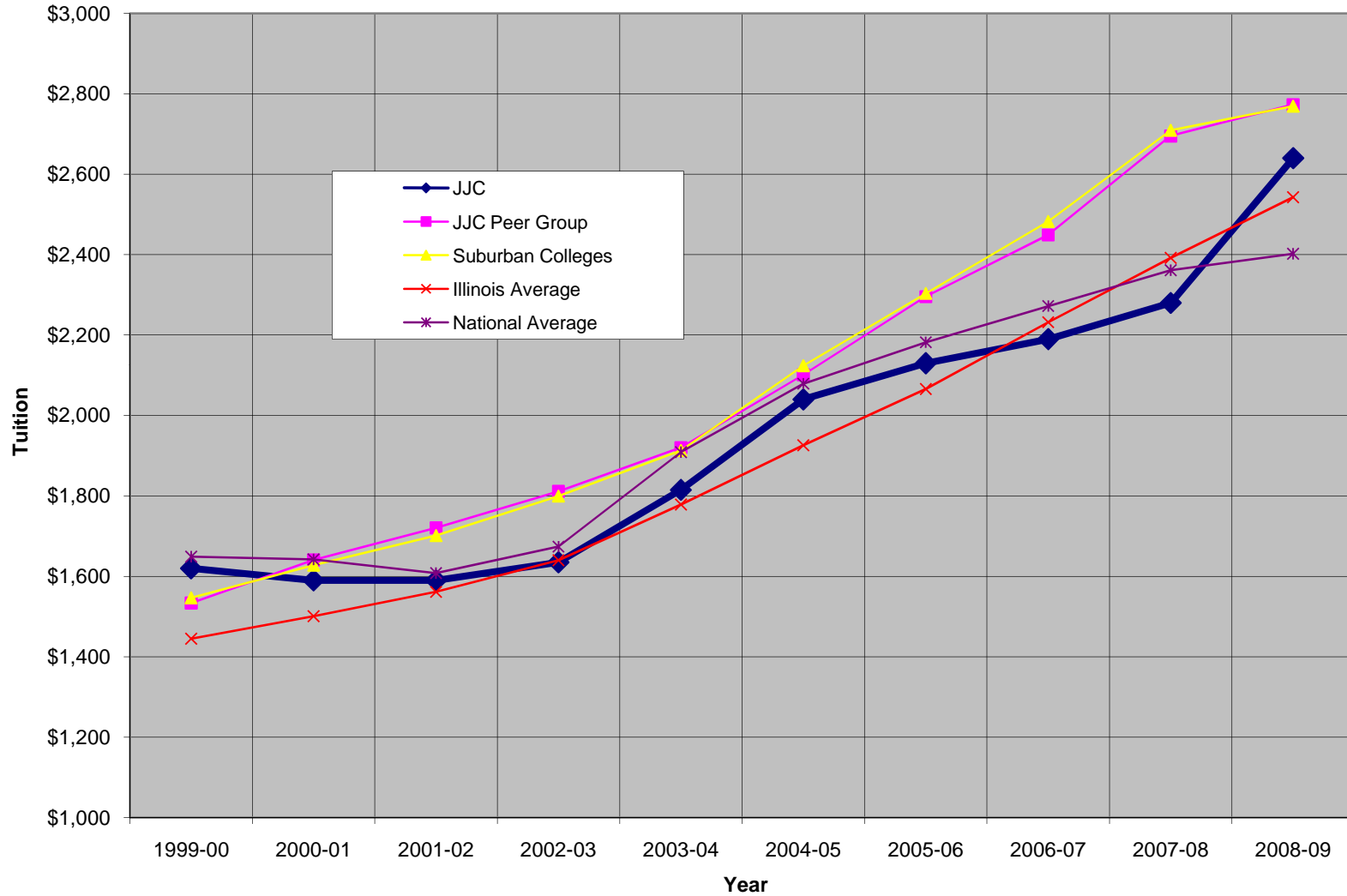
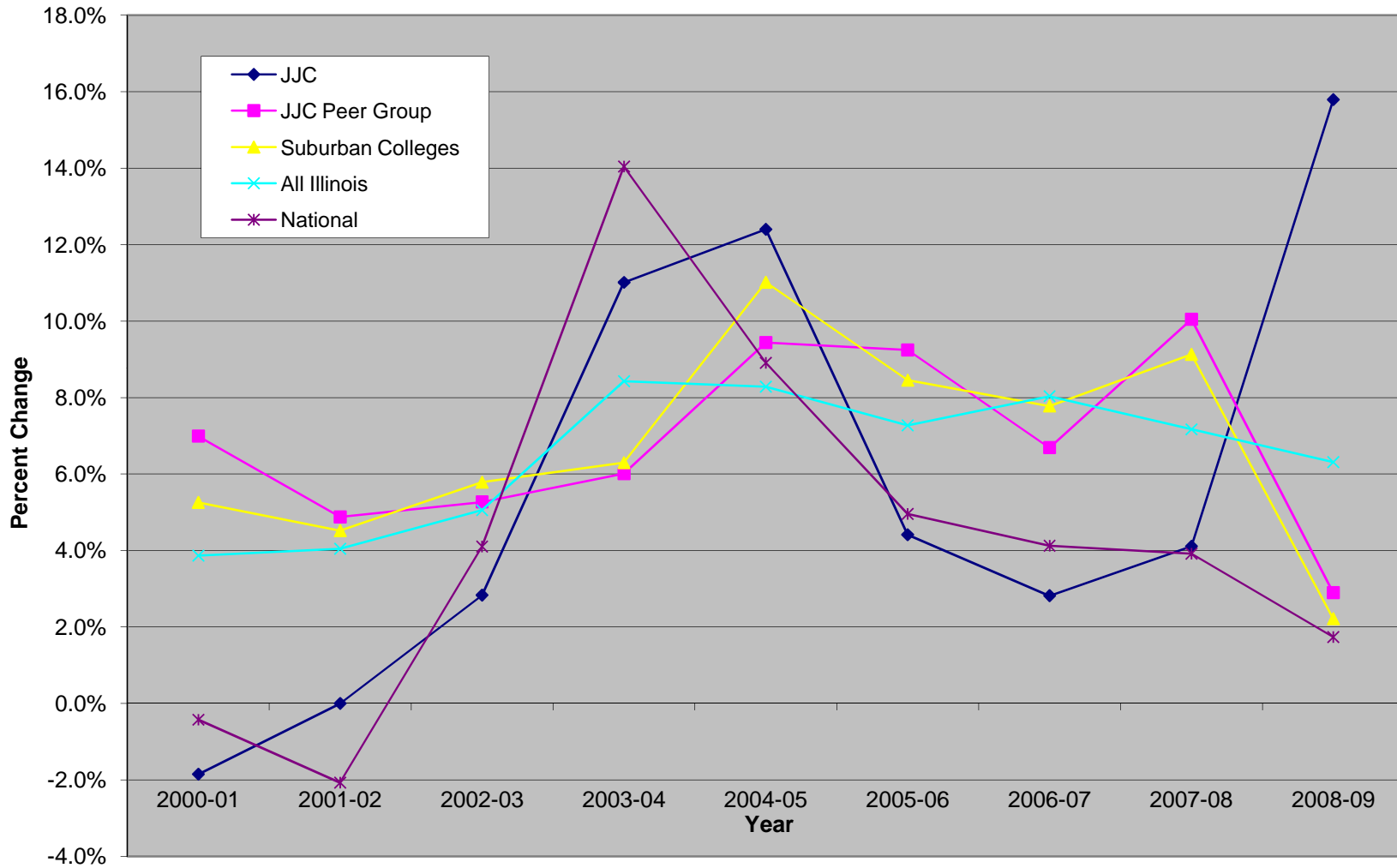


Chart 3
Annual Percent Change in Tuition and Fees at Community Colleges, 2001-2009



TUITION AND FEES, 2000-2009

Community Colleges	1999-00	2000-01	2001-02	2002-03	2003-04	2004-05	2005-06	2006-07	2007-08	2008-09	2005-09	2008-09
JJC	\$1,620	\$1,590	\$1,590	\$1,635	\$1,815	\$2,040	\$2,130	\$2,190	\$2,280	\$2,640	29.4%	15.8%
JJC Peer Group	\$1,534	\$1,641	\$1,721	\$1,811	\$1,920	\$2,101	\$2,296	\$2,449	\$2,695	\$2,773	32.0%	2.9%
Suburban Colleges	\$1,547	\$1,628	\$1,701	\$1,800	\$1,913	\$2,124	\$2,303	\$2,482	\$2,709	\$2,769	30.4%	2.2%
Illinois Average	\$1,445	\$1,501	\$1,561	\$1,640	\$1,779	\$1,926	\$2,066	\$2,232	\$2,392	\$2,543	32.0%	6.3%
National Average	\$1,649	\$1,642	\$1,608	\$1,674	\$1,909	\$2,079	\$2,182	\$2,272	\$2,361	\$2,402	15.5%	1.7%

4-Year Public	1999-00	2000-01	2001-02	2002-03	2003-04	2004-05	2005-06	2006-07	2007-08	2008-09	2004-08	2008-09
Illinois Average	\$3,587	\$3,725	\$4,013	\$4,597	\$5,045	\$5,877	\$6,472	\$7,426	\$8,187	\$9,215	56.8%	12.6%
National Average	\$3,362	\$3,508	\$3,766	\$4,098	\$4,645	\$5,126	\$5,492	\$5,836	\$6,185	\$6,585	28.5%	6.5%

4-Year Private	1999-00	2000-01	2001-02	2002-03	2003-04	2004-05	2005-06	2006-07	2007-08	2008-09	2004-08	2008-09
Illinois Average	\$14,609	\$15,332	\$15,911	\$17,127	\$18,189	\$19,015	\$19,882	\$21,060	\$22,167	\$23,480	23.5%	5.9%
National Average	\$15,518	\$16,072	\$17,377	\$18,060	\$18,950	\$20,045	\$20,980	\$22,218	\$23,712	\$25,143	25.4%	6.0%

ANNUAL CHANGES IN TUITION AND FEES, 2000-2009

Community Colleges	2000-01	2001-02	2002-03	2003-04	2004-05	2005-06	2006-07	2007-08	2008-09
JJC	-1.9%	0.0%	2.8%	11.0%	12.4%	4.4%	2.8%	4.1%	15.8%
JJC Peer Group	7.0%	4.9%	5.3%	6.0%	9.4%	9.2%	6.7%	10.0%	2.9%
Suburban Colleges	5.3%	4.5%	5.8%	6.3%	11.0%	8.5%	7.8%	9.1%	2.2%
All Illinois	3.9%	4.0%	5.1%	8.4%	8.3%	7.3%	8.0%	7.2%	6.3%
National	-0.4%	-2.1%	4.1%	14.0%	8.9%	5.0%	4.1%	3.9%	1.7%

4-Year Public	2000-01	2001-02	2002-03	2003-04	2004-05	2005-06	2006-07	2007-08	2008-09
All Illinois	3.8%	7.8%	14.6%	9.7%	16.5%	10.1%	14.7%	10.2%	12.6%
National	4.3%	7.4%	8.8%	13.3%	10.4%	7.1%	6.3%	6.0%	6.5%

4-Year Private	2000-01	2001-02	2002-03	2003-04	2004-05	2005-06	2006-07	2007-08	2008-09
All Illinois	4.9%	3.8%	7.6%	6.2%	4.5%	4.6%	5.9%	5.3%	5.9%
National	3.6%	8.1%	3.9%	4.9%	5.8%	4.7%	5.9%	6.7%	6.0%

NET PRICE, FALL 2006

Student/Family Income Quintile	Total Unduplicated Recipient Headcount	FINANCIAL AID AWARDED TO DEPENDENT FULL-TIME, FIRST-TIME FRESHMEN, FALL 2006													
		Federal Programs				State Programs				Institutional Programs				Total	
		PELL		FSEOG		MAP		IIA		Scholarships, Grants, Fellowships,		Tuition Waivers		Any Financial Aid	
		#	\$	#	\$	#	\$	#	\$	#	\$	#	\$	#	\$
\$0-28,599	166	160	\$1,651	7	\$300	139	\$803	90	\$250	25	\$728	0	\$0	166	\$3,745
\$28,608-50,001	109	97	\$1,162	1	\$300	80	\$602	15	\$250	23	\$657	0	\$0	109	\$2,967
\$50,002-74,437	67	19	\$747	0	\$0	22	\$533	0	\$0	28	\$827	0	\$0	67	\$2,016
\$74,438-106,220	54	3	\$233	0	\$0	2	\$250	0	\$0	25	\$639	0	\$0	54	\$1,343
\$106,221 & Up	22	0	\$0	0	\$0	1	\$250	0	\$0	11	\$659	0	\$0	22	\$1,563
Unknown	47	0	\$0	0	\$0	0	\$0	0	\$0	47	\$975	0	\$0	47	\$1,193
Total Average Aid	465	279	\$1,404	8	\$300	244	\$706	105	\$250	159	\$790	0	\$0	465	\$2,673

Net Price, Tuition, Fees, and Books After Financial Aid			
Student/Family Income Quintile	Posted Tuition, Fees, and Books (Fall 2006)	Less Financial Aid Received	Net Price
\$0-28,599	\$1,570	\$3,745	-\$2,175
\$28,608-50,001	\$1,570	\$2,967	-\$1,397
\$50,002-74,437	\$1,570	\$2,016	-\$446
\$74,438-106,220	\$1,570	\$1,343	\$227
\$106,221 & Up	\$1,570	\$1,563	\$7
UNKNOWN	\$1,570	\$1,193	\$377
ALL STUDENTS	\$1,570	\$2,673	-\$1,103

Net Price of Attendance After Financial Aid Fall 2006			
Student/Family Income Quintile	Cost of Attendance*	Less Financial Aid Received	Net Price
\$0-28,599	\$3,215	\$3,745	-\$530
\$28,608-50,001	\$3,215	\$2,967	\$248
\$50,002-74,437	\$3,215	\$2,016	\$1,199
\$74,438-106,220	\$3,215	\$1,343	\$1,872
\$106,221 & Up	\$3,215	\$1,563	\$1,652
UNKNOWN	\$3,215	\$1,193	\$2,022
ALL STUDENTS	\$3,215	\$2,673	\$542

*Cost of attendance is the price of tuition, fees, books, supplies, travel, and living expenses incurred while enrolled in college for dependent student living at home.

Further research on tuition and net price:

U.S. Department of Education. (2002, June). *What Students Pay for College: Changes in Net Price Between 1993 and 2000*.

U.S. Department of Education. (2003, June). *How Families of Low and Middle-Income Undergraduates Pay for College*.

U.S. Department of Education. (2004, June). *Paying for College: Changes Between 1990 and 2000*.

U.S. Department of Education. (2005, November). *Changes in Patterns of Prices and Financial Aid*.

U.S. Department of Education. (2006, August). *Student Financing of Undergraduate Education, With a Special Analysis of Net Price*

All reports available on-line at the U.S. Department of Education's National Center for Education Statistics web-site.

Source for estimated expenses: College Opportunities Online Locator- COOL.

College	Community College Tuition and Fees, 1999-2000 through 2008-2009										% change	
	1999-00	2000-01	2001-02	2002-03	2003-04	2004-05	2005-06	2006-07	2007-08	2008-09	2005-09	2008-09
Carl Sandburg	\$1,800	\$1,845	\$1,905	\$1,965	\$2,640	\$2,430	\$2,595	\$2,956	\$3,285	\$3,810	56.8%	16.0%
Black Hawk	\$1,590	\$1,650	\$1,650	\$1,650	\$1,860	\$1,920	\$2,070	\$2,190	\$2,430	\$2,535	32.0%	4.3%
Chicago	\$1,545	\$1,654	\$1,750	\$1,810	\$1,810	\$2,110	\$2,260	\$2,410	\$2,410	\$2,510	19.0%	4.1%
Danville	\$1,320	\$1,320	\$1,440	\$1,440	\$1,620	\$1,740	\$1,920	\$2,130	\$2,340	\$2,520	44.8%	7.7%
DuPage	\$1,702	\$1,741	\$1,839	\$2,036	\$2,070	\$2,250	\$2,610	\$2,880	\$3,713	\$3,240	44.0%	-12.7%
Elgin	\$1,390	\$1,440	\$1,560	\$1,680	\$1,860	\$2,100	\$2,260	\$2,530	\$2,740	\$2,740	30.5%	0.0%
Heartland	\$1,330	\$1,290	\$1,440	\$1,500	\$1,620	\$1,800	\$1,890	\$2,100	\$2,160	\$2,610	45.0%	20.8%
Highland	\$1,330	\$1,480	\$1,540	\$1,640	\$1,710	\$1,920	\$2,010	\$2,160	\$2,340	\$2,490	29.7%	6.4%
Illinois Central	\$1,510	\$1,560	\$1,600	\$1,600	\$1,620	\$1,800	\$1,920	\$2,100	\$2,250	\$2,460	36.7%	9.3%
Illinois Eastern	\$1,260	\$1,260	\$1,260	\$1,350	\$1,450	\$1,530	\$1,680	\$1,680	\$1,810	\$1,910	24.8%	5.5%
Illinois Valley	\$1,650	\$1,650	\$1,724	\$1,742	\$1,848	\$1,742	\$1,742	\$1,898	\$1,973	\$2,168	24.5%	9.9%
John Logan	\$1,140	\$1,140	\$1,380	\$1,470	\$1,620	\$1,710	\$1,830	\$1,920	\$2,010	\$2,130	24.6%	6.0%
John Wood	\$1,560	\$1,680	\$1,740	\$1,890	\$2,130	\$2,400	\$2,430	\$2,670	\$3,120	\$3,120	30.0%	0.0%
Joliet Jr	\$1,620	\$1,590	\$1,590	\$1,635	\$1,815	\$2,040	\$2,130	\$2,190	\$2,280	\$2,640	29.4%	15.8%
Kankakee	\$1,140	\$1,260	\$1,335	\$1,320	\$1,650	\$1,800	\$1,800	\$1,980	\$2,070	\$2,220	23.3%	7.2%
Kaskaskia	\$1,260	\$1,260	\$1,290	\$1,440	\$1,570	\$1,650	\$1,800	\$1,890	\$2,040	\$2,190	32.7%	7.4%
Kishwaukee	\$1,390	\$1,520	\$1,470	\$1,770	\$1,830	\$1,970	\$2,100	\$2,220	\$2,310	\$2,430	23.4%	5.2%
Lake County	\$1,590	\$1,620	\$1,650	\$1,650	\$1,680	\$1,921	\$2,101	\$2,400	\$2,700	\$2,850	48.4%	5.6%
Lake Land	\$1,560	\$1,560	\$1,614	\$1,614	\$1,770	\$1,904	\$1,919	\$2,097	\$2,214	\$2,394	25.7%	8.1%
Lewis and Clark	\$1,590	\$1,590	\$1,740	\$1,740	\$1,890	\$2,010	\$2,220	\$2,400	\$2,400	\$2,700	34.3%	12.5%
Lincoln Land	\$1,380	\$1,380	\$1,380	\$1,500	\$1,575	\$1,770	\$1,986	\$2,040	\$2,460	\$2,505	41.5%	1.8%
McHenry County	\$1,424	\$1,544	\$1,544	\$1,724	\$1,874	\$2,024	\$2,174	\$2,488	\$2,474	\$2,594	28.2%	4.9%
Moraine Valley	\$1,470	\$1,620	\$1,620	\$1,682	\$1,741	\$1,920	\$2,070	\$2,162	\$2,162	\$2,466	28.4%	14.1%
Morton	\$1,440	\$1,440	\$1,440	\$1,440	\$1,590	\$1,890	\$2,090	\$2,210	\$2,452	\$2,580	36.5%	5.2%
Oakton	\$1,323	\$1,413	\$1,563	\$1,728	\$1,878	\$1,993	\$2,228	\$2,358	\$2,578	\$2,678	34.4%	3.9%
Parkland	\$1,530	\$1,590	\$1,620	\$1,650	\$1,800	\$2,010	\$2,070	\$2,310	\$2,550	\$2,610	29.9%	2.4%
Prairie State	\$1,770	\$1,770	\$1,800	\$2,120	\$2,120	\$2,300	\$2,300	\$2,480	\$2,620	\$2,620	13.9%	0.0%
Rend Lake	\$1,200	\$1,260	\$1,440	\$1,536	\$1,536	\$1,710	\$1,860	\$1,950	\$2,070	\$2,220	29.8%	7.2%
Richland	\$1,470	\$1,485	\$1,520	\$1,580	\$1,635	\$1,665	\$1,870	\$1,940	\$2,070	\$2,230	33.9%	7.7%
Rock Valley	\$1,543	\$1,504	\$1,440	\$1,440	\$1,560	\$1,786	\$1,892	\$2,084	\$2,084	\$2,220	24.3%	6.5%
Sauk Valley	\$1,380	\$1,440	\$1,530	\$1,770	\$1,800	\$1,980	\$2,190	\$2,400	\$2,460	\$2,550	28.8%	3.7%
Shawnee	\$1,141	\$960	\$1,008	\$1,008	\$1,350	\$1,463	\$1,500	\$1,800	\$1,950	\$2,160	47.6%	10.8%
South Suburban	\$1,665	\$1,785	\$1,890	\$1,890	\$2,040	\$2,340	\$2,610	\$2,910	\$3,113	\$3,112	33.0%	0.0%
Southeastern	\$1,152	\$1,170	\$1,170	\$1,470	\$1,560	\$1,710	\$1,920	\$1,980	\$1,980	\$2,220	29.8%	12.1%
Southwestern	\$1,335	\$1,410	\$1,410	\$1,470	\$1,560	\$1,650	\$1,740	\$1,890	\$2,040	\$2,250	36.4%	10.3%
Spoon River	\$1,560	\$1,620	\$1,710	\$1,710	\$1,860	\$1,965	\$2,100	\$2,250	\$2,370	\$2,640	34.4%	11.4%
Triton	\$1,438	\$1,588	\$1,670	\$1,670	\$1,860	\$1,980	\$1,980	\$1,930	\$1,930	\$2,170	9.6%	12.4%
Waubonsee	\$1,318	\$1,576	\$1,640	\$1,540	\$1,670	\$1,663	\$1,920	\$2,100	\$2,250	\$2,460	47.9%	9.3%
Wm Rainey Harper	\$1,678	\$1,862	\$1,982	\$2,102	\$2,292	\$2,544	\$2,784	\$2,964	\$3,084	\$3,234	27.1%	4.9%

College	Community College Tuition and Fees, 1999-2000 through 2008-2009										% change	
	1999-00	2000-01	2001-02	2002-03	2003-04	2004-05	2005-06	2006-07	2007-08	2008-09	2005-09	2008-09
JJC	\$1,620	\$1,590	\$1,590	\$1,635	\$1,815	\$2,040	\$2,130	\$2,190	\$2,280	\$2,640	29.4%	15.8%
JJC Peer Group	\$1,534	\$1,641	\$1,721	\$1,811	\$1,920	\$2,101	\$2,296	\$2,449	\$2,695	\$2,773	32.0%	2.9%
Suburban Colleges	\$1,547	\$1,628	\$1,701	\$1,800	\$1,913	\$2,124	\$2,303	\$2,482	\$2,709	\$2,769	30.4%	2.2%
Illinois Average	\$1,449	\$1,501	\$1,561	\$1,640	\$1,779	\$1,926	\$2,066	\$2,232	\$2,392	\$2,543	32.1%	6.3%

College	4-year Public Tuition and Fees, 1999-2000 through 2008-2009										% change	
	1999-00	2000-01	2001-02	2002-03	2003-04	2004-05	2005-06	2006-07	2007-08	2008-09	2005-09	2008-09
Chicago State	\$3,581	\$2,846	\$3,027	\$3,779	\$4,382	\$6,143	\$6,625	\$7,138	\$7,730	\$8,878	44.5%	14.9%
Eastern Illinois	\$3,368	\$4,092	\$4,297	\$4,648	\$4,980	\$5,782	\$5,842	\$7,069	\$7,990	\$8,782	51.9%	9.9%
Governors State	\$2,398	\$2,470	\$2,546	\$2,823	\$3,990	\$4,612	\$5,010	\$5,478	\$5,966	\$7,542	63.5%	26.4%
Illinois state	\$4,210	\$4,340	\$4,482	\$5,036	\$5,530	\$6,328	\$7,091	\$8,040	\$9,019	\$9,814	55.1%	8.8%
Northeastern	\$2,576	\$2,664	\$2,898	\$3,330	\$3,530	\$4,496	\$5,646	\$6,261	\$7,044	\$8,016	78.3%	13.8%
Northern Illinois	\$4,090	\$4,274	\$4,484	\$5,175	\$5,164	\$5,946	\$6,638	\$7,205	\$7,889	\$8,524	43.4%	8.0%
Southern Edwardsville	\$2,744	\$3,007	\$3,291	\$3,709	\$4,183	\$4,859	\$5,209	\$7,789	\$7,033	\$7,831	61.2%	11.3%
Southern Carbondale	\$3,936	\$4,114	\$4,254	\$4,865	\$5,521	\$6,341	\$6,831	\$5,938	\$8,899	\$9,813	54.8%	10.3%
Illinois Chicago	\$4,648	\$4,780	\$4,944	\$6,592	\$6,934	\$7,652	\$8,302	\$9,742	\$9,744	\$11,710	53.0%	20.2%
Illinois Springfield	\$3,146	\$3,395	\$3,715	\$4,009	\$4,318	\$4,699	\$5,375	\$7,162	\$7,826	\$8,605	83.1%	10.0%
Illinois Champaign	\$4,526	\$4,752	\$5,754	\$6,704	\$7,010	\$7,966	\$8,688	\$9,882	\$11,130	\$12,240	53.7%	10.0%
Western Illinois	\$3,820	\$3,960	\$4,467	\$4,498	\$4,997	\$5,695	\$6,411	\$7,411	\$8,079	\$8,828	55.0%	9.3%
Illinois Average	\$3,587	\$3,725	\$4,013	\$4,597	\$5,045	\$5,877	\$6,472	\$7,426	\$8,196	\$9,215	56.8%	12.4%

College	4-year Private Tuition and Fees, 1999-2000 through 2008-2009										% change	
	1999-00	2000-01	2001-02	2002-03	2003-04	2004-05	2005-06	2006-07	2007-08	2008-09	2005-09	2008-09
Augustana	\$17,287	\$17,913	\$18,720	\$19,608	\$20,829	\$22,131	\$23,456	\$24,924	\$26,484	\$30,150	36.2%	13.8%
Aurora	\$12,810	\$12,918	\$13,368	\$13,767	\$14,810	\$14,750	\$15,600	\$16,190	\$16,850	\$17,500	18.6%	3.9%
Benedictine	\$14,060	\$14,880	\$15,630	\$16,660	\$17,500	\$18,300	\$19,720	\$20,310	\$21,310	\$22,310	21.9%	4.7%
Blackburn	\$8,035	\$8,275	\$8,720	\$9,470	\$10,010	\$12,360	\$15,040	\$15,700	\$15,770	\$13,610	10.1%	-13.7%
Bradley	\$13,960	\$14,580	\$15,370	\$16,110	\$16,910	\$17,730	\$18,630	\$20,078	\$21,378	\$22,814	28.7%	6.7%
Chicago	\$24,484	\$25,489	\$26,475	\$27,825	\$29,238	\$30,729	\$32,265	\$34,005	\$35,868	\$37,632	22.5%	4.9%
Chicago Art Inst.	\$19,140	\$20,220	\$21,300	\$22,500	\$24,000	\$25,500	\$27,150	\$29,220	\$31,040	\$32,840	28.8%	5.8%
Columbia	\$10,830	\$11,760	\$12,704	\$14,104	\$15,295	\$15,270	\$15,998	\$16,788	\$17,564	\$18,430	20.7%	4.9%
Concordia	\$12,993	\$13,860	\$15,000	\$17,000	\$18,200	\$19,000	\$20,000	\$20,300	\$21,320	\$22,390	17.8%	5.0%
DePaul	\$14,700	\$15,420	\$16,695	\$18,020	\$18,910	\$19,840	\$21,100	\$22,575	\$24,110	\$26,068	31.4%	8.1%
Dominican	\$14,260	\$14,820	\$15,700	\$16,720	\$17,950	\$19,000	\$20,050	\$21,250	\$22,450	\$23,950	26.1%	6.7%
East-West	\$7,960	\$8,445	\$9,140	\$9,740	\$10,395	\$10,845	\$11,445	\$12,090	\$12,825	\$13,530	24.8%	5.5%
Elmhurst	\$13,900	\$15,000	\$16,200	\$17,500	\$18,600	\$20,090	\$21,600	\$23,260	\$24,760	\$26,060	29.7%	5.3%
Eureka	\$15,450	\$16,100	\$16,900	\$17,930	\$19,100	\$13,440	\$13,400	\$14,230	\$15,270	\$16,255	20.9%	6.5%
Greenville	\$12,586	\$12,954	\$1,400	\$14,860	\$15,776	\$16,834	\$17,242	\$17,932	\$18,672	\$19,428	15.4%	4.0%
IIT	\$17,600	\$18,100	\$18,870	\$19,756	\$20,331	\$21,548	\$22,982	\$24,113	\$25,746	\$27,513	27.7%	6.9%
Illinois College	\$10,200	\$10,735	\$11,280	\$11,850	\$13,300	\$14,600	\$15,500	\$17,100	\$18,800	\$20,300	39.0%	8.0%
Illinois Wesleyan	\$19,370	\$20,410	\$21,640	\$23,050	\$24,540	\$26,130	\$27,624	\$29,136	\$30,750	\$32,434	24.1%	5.5%
Judson	\$13,130	\$13,890	\$14,422	\$15,510	\$16,050	\$17,150	\$18,500	\$19,450	\$20,420	\$21,850	27.4%	7.0%
Kendall	\$10,746	\$12,050	\$14,300	\$13,500	n/a	n/a	n/a	n/a	n/a	n/a	n/a	n/a
Knox	\$19,386	\$21,174	\$22,620	\$23,499	\$24,369	\$25,236	\$26,100	\$27,900	\$29,178	\$30,507	20.9%	4.6%
Lake Forest	\$20,530	\$21,190	\$22,206	\$23,286	\$24,406	\$25,828	\$27,334	\$29,034	\$30,964	\$32,520	25.9%	5.0%
Lewis	\$12,810	\$13,320	\$14,040	\$15,250	\$15,950	\$16,991	\$18,075	\$19,825	\$20,450	\$21,990	29.4%	7.5%
Loyola	\$18,210	\$18,726	\$19,274	\$19,932	\$21,054	\$22,340	\$24,612	\$26,886	\$27,966	\$29,486	32.0%	5.4%
MacMurray	\$12,375	\$13,140	\$14,000	\$14,500	\$14,500	\$14,500	\$15,250	\$15,750	\$16,850	\$17,450	20.3%	3.6%
McKendree	\$12,000	\$12,300	\$13,350	\$14,200	\$15,200	\$16,600	\$17,800	\$18,900	\$20,150	\$21,270	28.1%	5.6%
Millikin	\$15,623	\$16,467	\$17,359	\$18,384	\$19,309	\$20,308	\$21,141	\$22,069	\$23,945	\$25,295	24.6%	5.6%
Monmouth	\$15,720	\$16,370	\$17,000	\$17,760	\$18,600	\$19,350	\$20,200	\$23,100	\$22,000	\$24,000	24.0%	9.1%
National Louis	\$13,095	\$13,095	\$13,995	\$14,715	\$16,200	\$16,200	\$16,935	\$17,925	\$17,925	\$18,075	11.6%	0.8%
North Central	\$15,216	\$16,335	\$17,175	\$18,402	\$19,446	\$20,565	\$21,933	\$23,115	\$23,115	\$25,938	26.1%	12.2%
North Park	\$16,400	\$16,910	\$17,790	\$18,860	\$19,470	\$20,350	\$13,900	\$14,900	\$16,500	\$17,600	-13.5%	6.7%
Northwestern	\$23,496	\$24,648	\$25,839	\$27,228	\$28,524	\$30,085	\$31,789	\$33,559	\$35,429	\$37,125	23.4%	4.8%
Olivet Nazarene	\$12,228	\$12,728	\$13,464	\$14,200	\$14,980	\$15,720	\$16,490	\$17,590	\$19,590	\$21,590	37.3%	10.2%
Principia	\$15,258	\$15,984	\$16,840	\$17,670	\$18,540	\$19,455	\$20,415	\$21,450	\$22,080	\$22,950	18.0%	3.9%
Quincy	\$13,780	\$14,700	\$15,430	\$16,360	\$16,850	\$17,650	\$18,330	\$19,010	\$19,600	\$20,790	17.8%	6.1%
Robert Morris	\$10,950	\$11,550	\$12,150	\$12,750	\$13,500	\$14,250	\$15,375	\$15,900	\$16,800	\$18,000	26.3%	7.1%
Rockford	\$16,250	\$16,800	\$17,450	\$18,320	\$20,210	\$21,200	\$22,460	\$22,460	\$22,950	\$23,500	10.8%	2.4%
Roosevelt	\$12,260	\$13,070	\$13,970	\$14,660	\$15,430	\$16,330	\$14,430	\$15,564	\$16,930	\$19,000	16.4%	12.2%
St Francis	\$13,080	\$14,300	\$14,990	\$16,030	\$16,820	\$17,670	\$18,530	\$19,450	\$20,830	\$21,860	23.7%	4.9%

College	4-year Private Tuition and Fees, 1999-2000 through 2008-2009										% change	
	1999-00	2000-01	2001-02	2002-03	2003-04	2004-05	2005-06	2006-07	2007-08	2008-09	2005-09	2008-09
St Xavier	\$13,760	\$14,530	\$15,130	\$15,880	\$16,670	\$17,320	\$18,520	\$19,860	\$21,236	\$22,926	32.4%	8.0%
Trinity Christian	\$12,730	\$13,240	\$13,970	\$14,640	\$15,490	\$16,400	\$17,135	\$18,115	\$19,241	\$20,256	23.5%	5.3%
Wheaton	\$14,930	\$15,540	\$16,390	\$17,320	\$18,500	\$20,000	\$21,100	\$22,450	\$23,730	\$25,500	27.5%	7.5%
Illinois Average	\$14,609	\$15,332	\$15,911	\$17,127	\$18,189	\$19,015	\$19,882	\$21,060	\$22,167	\$23,480	23.5%	5.9%