



2010-2011 Tuition and Fees

TUITION AND FEES AT JOLIET JUNIOR COLLEGE, WITH COMPARISONS

Contents

Summary of Tuition and Fees at Joliet Junior College With Comparisons

- 1 2010-2011 Tuition and Fees at Community Colleges
- 2 Tuition and Fees at Illinois Community Colleges, 2002-2011
- 3 Annual Percent Change in Tuition and Fees at Community Colleges, 2007-2011
- 4 Tuition and Fees Tables, 2002-2011
- 5 Net Price - what students actually pay for college**
- 6 Illinois Community Colleges Tuition Table, 2002-2011
- 7 Illinois 4-Year Public Tuition Table, 2002-2011
- 8 Illinois 4-Year Private Tuition Table, 2002-2011

*Tuition and fee data assumes student enrolled in 30 hours in an academic year.

**To be added

TUITION AND FEES AT JOLIET JUNIOR COLLEGE, WITH COMPARISONS

SUMMARY 2010-2011

At \$3,090, JJC tuition and fees are lower than it's peer group, suburban colleges, and national average (see Chart 1).

JJC's tuition increases have been much lower in the last five years than other colleges (see Charts 2 and 3).

JJC's tuition is much lower than the Illinois average for 4-year public (\$10,169) and 4-year private (\$25,775) institutions. By attending JJC for their first two years of college instead of a 4-year public or private college and assuming a student does not receive financial aid, a student can save \$14,158 or \$45,370 respectively (see page 4, Tuition tables).

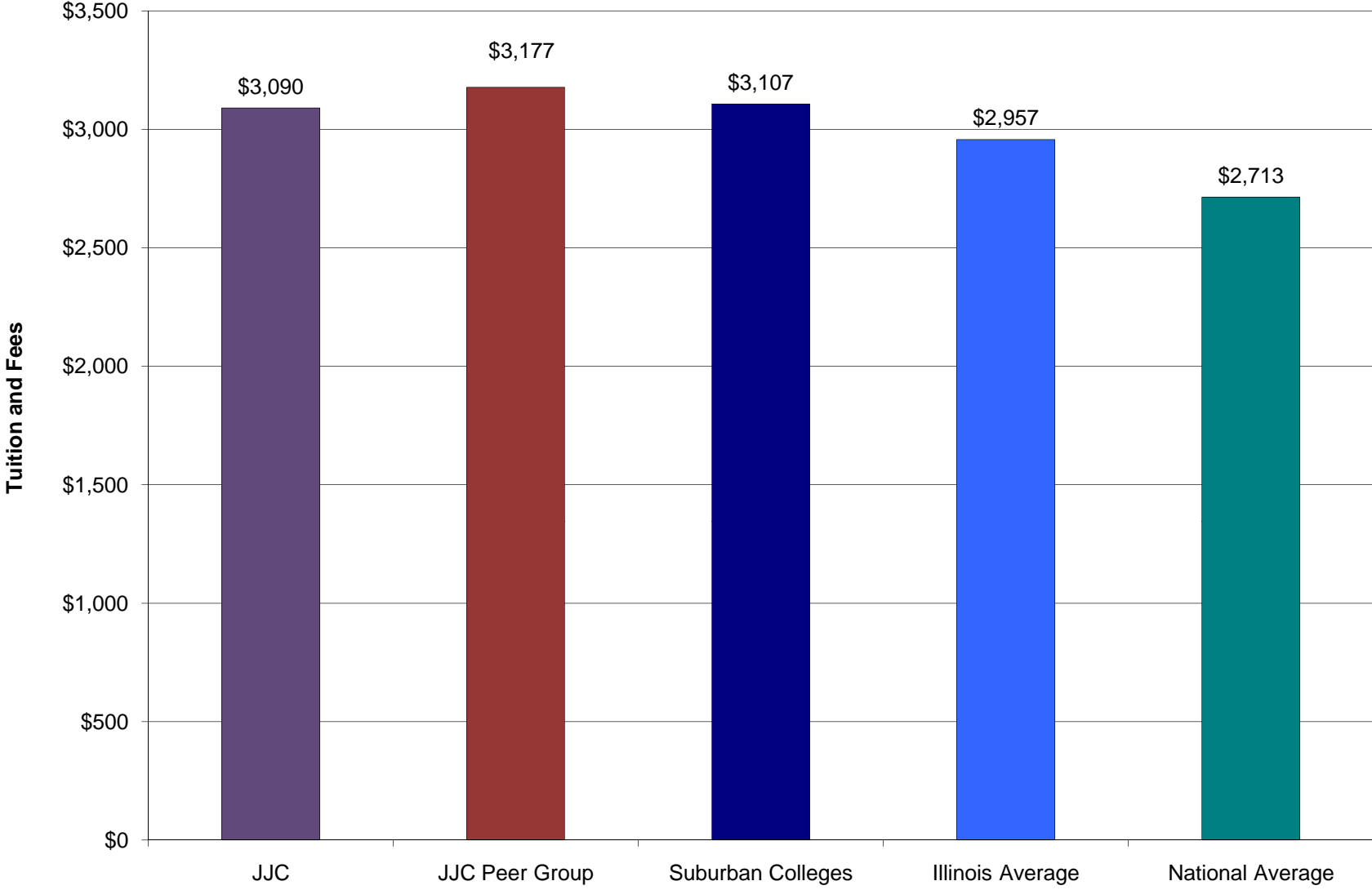
Tuition is not an accurate indicator of what students actually pay because many students receive financial aid. Net price is calculated as:

$$\text{Net price} = \text{posted tuition and fees} - \text{financial aid received}$$

Research shows if eligible students apply for financial aid, half of the Illinois population will pay nothing for tuition, fees, and books at JJC. Additional research shows that while tuition has increased at a faster pace than inflation, net price for low-income students has not witnessed a significant increase. This suggests that increasing the number of students who receive financial aid could be a more equitable and efficient method of enhancing affordability for low-income students than low tuition (see page 5 and related research).

Tuition and fee information for all Illinois public and private institutions is listed in tables at the end of this document.

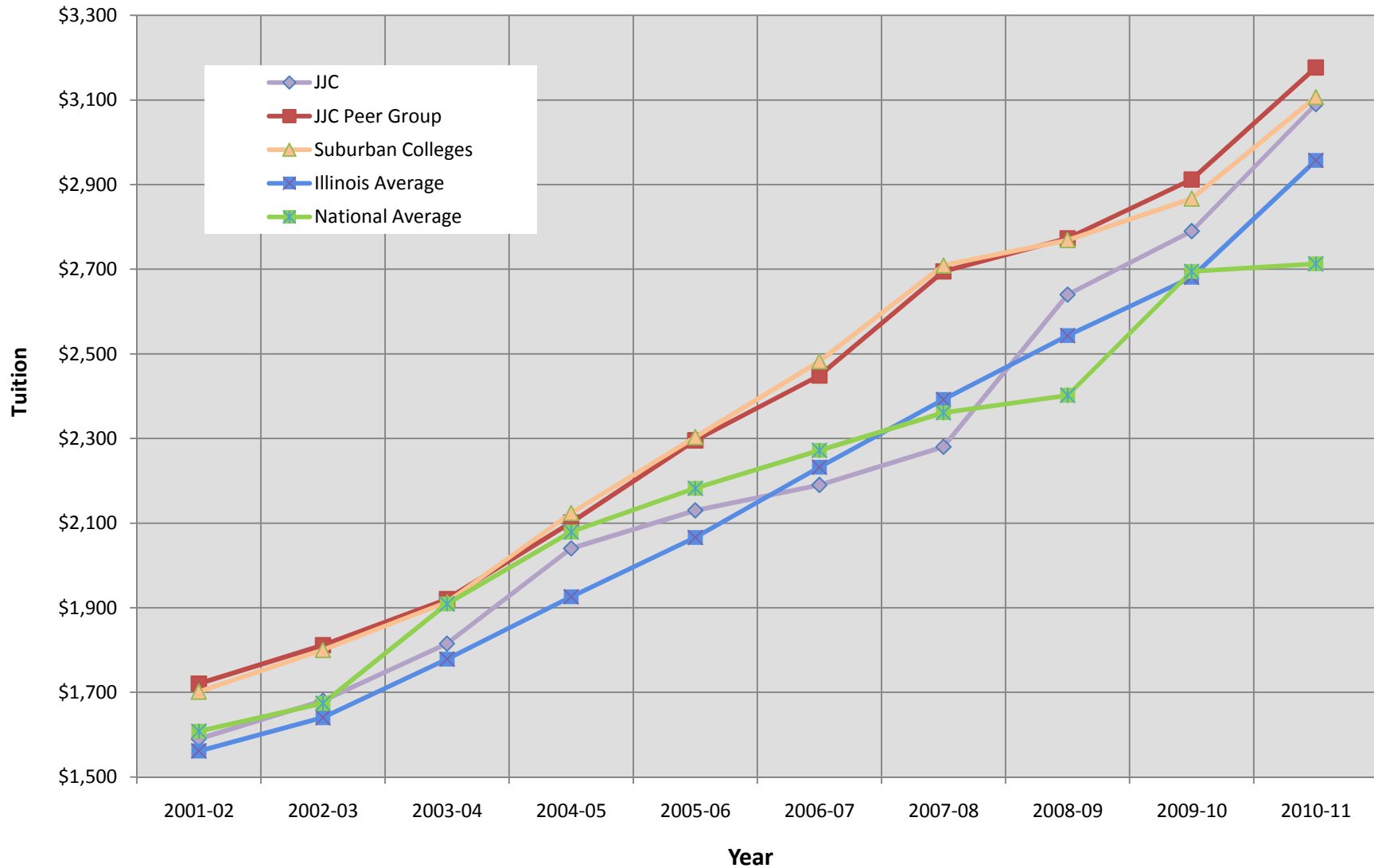
Chart 1
2010-11 Tuition and Fees at Community Colleges



Source: Chronicle of Higher Education Tuition and Fee Database

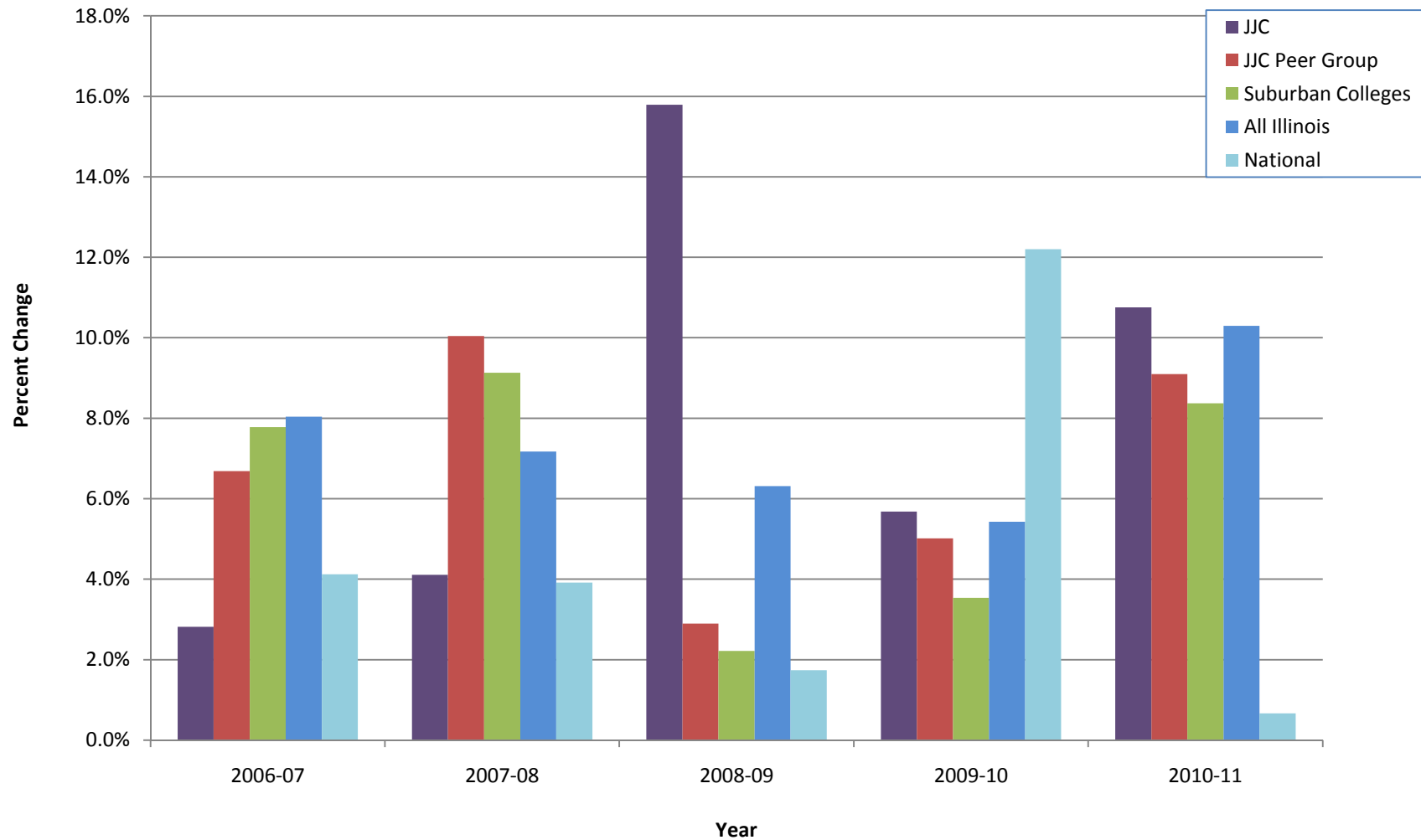
Chart 2

Tuition and Fees at Illinois Community Colleges, 2002-2011



Source: Chronicle of Higher Education Tuition and Fee Database

Chart 3 Annual Percent Change in Tuition and Fees at Community Colleges, 2007-2011



Source: Chronicle of Higher Education Tuition and Fee Database

TUITION AND FEES, 2002-2011

| Community Colleges | 2001-02 | 2002-03 | 2003-04 | 2004-05 | 2005-06 | 2006-07 | 2007-08 | 2008-09 | 2009-10 | 2010-11 | 2007-11 | 2009-10 |
|--------------------|---------|---------|---------|---------|---------|---------|---------|---------|---------|---------|---------|---------|
| JJC | \$1,590 | \$1,680 | \$1,815 | \$2,040 | \$2,130 | \$2,190 | \$2,280 | \$2,640 | \$2,790 | \$3,090 | 41.1% | 10.8% |
| JJC Peer Group | \$1,721 | \$1,811 | \$1,920 | \$2,101 | \$2,296 | \$2,449 | \$2,695 | \$2,773 | \$2,912 | \$3,177 | 29.7% | 9.1% |
| Suburban Colleges | \$1,701 | \$1,800 | \$1,913 | \$2,124 | \$2,303 | \$2,482 | \$2,709 | \$2,769 | \$2,867 | \$3,107 | 25.2% | 8.4% |
| Illinois Average | \$1,561 | \$1,640 | \$1,779 | \$1,926 | \$2,066 | \$2,232 | \$2,392 | \$2,543 | \$2,681 | \$2,957 | 32.5% | 10.3% |
| National Average | \$1,608 | \$1,674 | \$1,909 | \$2,079 | \$2,182 | \$2,272 | \$2,361 | \$2,402 | \$2,695 | \$2,713 | 19.4% | 0.7% |

| 4-Year Public | 2001-02 | 2002-03 | 2003-04 | 2004-05 | 2005-06 | 2006-07 | 2007-08 | 2008-09 | 2009-10 | 2010-11 | 2007-11 | 2009-10 |
|------------------|---------|---------|---------|---------|---------|---------|---------|---------|---------|----------|---------|---------|
| Illinois Average | \$4,013 | \$4,597 | \$5,045 | \$5,877 | \$6,472 | \$7,426 | \$8,187 | \$9,215 | \$9,787 | \$10,169 | 36.9% | 3.9% |
| National Average | \$3,766 | \$4,098 | \$4,645 | \$5,126 | \$5,492 | \$5,836 | \$6,185 | \$6,585 | \$7,020 | \$7,605 | 30.3% | 8.3% |

| 4-Year Private | 2001-02 | 2002-03 | 2003-04 | 2004-05 | 2005-06 | 2006-07 | 2007-08 | 2008-09 | 2009-10 | 2010-11 | 2007-11 | 2009-10 |
|------------------|----------|----------|----------|----------|----------|----------|----------|----------|----------|----------|---------|---------|
| Illinois Average | \$15,911 | \$17,127 | \$18,189 | \$19,015 | \$19,882 | \$21,060 | \$22,167 | \$23,480 | \$24,623 | \$25,775 | 22.4% | 4.7% |
| National Average | \$17,377 | \$18,060 | \$18,950 | \$20,045 | \$20,980 | \$22,218 | \$23,712 | \$25,143 | \$26,273 | \$27,293 | 22.8% | 3.9% |

ANNUAL CHANGES IN TUITION AND FEES, 2003-2011

| Community Colleges | 2002-03 | 2003-04 | 2004-05 | 2005-06 | 2006-07 | 2007-08 | 2008-09 | 2009-10 | 2010-11 |
|--------------------|---------|---------|---------|---------|---------|---------|---------|---------|---------|
| JJC | 5.7% | 8.0% | 12.4% | 4.4% | 2.8% | 4.1% | 15.8% | 5.7% | 10.8% |
| JJC Peer Group | 5.3% | 6.0% | 9.4% | 9.2% | 6.7% | 10.0% | 2.9% | 5.0% | 9.1% |
| Suburban Colleges | 5.8% | 6.3% | 11.0% | 8.5% | 7.8% | 9.1% | 2.2% | 3.5% | 8.4% |
| All Illinois | 5.1% | 8.4% | 8.3% | 7.3% | 8.0% | 7.2% | 6.3% | 5.4% | 10.3% |
| National | 4.1% | 14.0% | 8.9% | 5.0% | 4.1% | 3.9% | 1.7% | 12.2% | 0.7% |

| 4-Year Public | 2002-03 | 2003-04 | 2004-05 | 2005-06 | 2006-07 | 2007-08 | 2008-09 | 2009-10 | 2010-11 |
|---------------|---------|---------|---------|---------|---------|---------|---------|---------|---------|
| All Illinois | 14.6% | 9.7% | 16.5% | 10.1% | 14.7% | 10.2% | 12.6% | 6.2% | 3.9% |
| National | 8.8% | 13.3% | 10.4% | 7.1% | 6.3% | 6.0% | 6.5% | 6.6% | 8.3% |

| 4-Year Private | 2002-03 | 2003-04 | 2004-05 | 2005-06 | 2006-07 | 2007-08 | 2008-09 | 2009-10 | 2010-11 |
|----------------|---------|---------|---------|---------|---------|---------|---------|---------|---------|
| All Illinois | 7.6% | 6.2% | 4.5% | 4.6% | 5.9% | 5.3% | 5.9% | 4.9% | 4.7% |
| National | 3.9% | 4.9% | 5.8% | 4.7% | 5.9% | 6.7% | 6.0% | 4.5% | 3.9% |

Source: Chronicle of Higher Education Tuition and Fee Database

| College | Community College Tuition and Fees, 2001-2002 through 2010-2011 | | | | | | | | | | % change | |
|------------------|---|---------|---------|---------|---------|---------|---------|---------|---------|---------|----------|---------|
| | 2001-02 | 2002-03 | 2003-04 | 2004-05 | 2005-06 | 2006-07 | 2007-08 | 2008-09 | 2009-10 | 2010-11 | 2007-11 | 2010-11 |
| Carl Sandburg | \$1,905 | \$1,965 | \$2,640 | \$2,430 | \$2,595 | \$2,956 | \$3,285 | \$3,810 | \$3,930 | \$4,035 | 36.5% | 2.7% |
| Black Hawk | \$1,650 | \$1,650 | \$1,860 | \$1,920 | \$2,070 | \$2,190 | \$2,430 | \$2,535 | \$2,685 | \$2,835 | 29.5% | 5.6% |
| Chicago | \$1,750 | \$1,810 | \$1,810 | \$2,110 | \$2,260 | \$2,410 | \$2,410 | \$2,510 | \$2,720 | \$3,115 | 29.3% | 14.5% |
| Danville | \$1,440 | \$1,440 | \$1,620 | \$1,740 | \$1,920 | \$2,130 | \$2,340 | \$2,520 | \$2,670 | \$3,030 | 42.3% | 13.5% |
| DuPage | \$1,839 | \$2,036 | \$2,070 | \$2,250 | \$2,610 | \$2,880 | \$3,713 | \$3,240 | \$3,475 | \$3,870 | 34.4% | 11.4% |
| Elgin | \$1,560 | \$1,680 | \$1,860 | \$2,100 | \$2,260 | \$2,530 | \$2,740 | \$2,740 | \$2,740 | \$2,740 | 8.3% | 0.0% |
| Heartland | \$1,440 | \$1,500 | \$1,620 | \$1,800 | \$1,890 | \$2,100 | \$2,160 | \$2,610 | \$2,850 | \$3,450 | 64.3% | 21.1% |
| Highland | \$1,540 | \$1,640 | \$1,710 | \$1,920 | \$2,010 | \$2,160 | \$2,340 | \$2,490 | \$2,730 | \$3,090 | 43.1% | 13.2% |
| Illinois Central | \$1,600 | \$1,600 | \$1,620 | \$1,800 | \$1,920 | \$2,100 | \$2,250 | \$2,460 | \$2,610 | \$2,790 | 32.9% | 6.9% |
| Illinois Eastern | \$1,260 | \$1,350 | \$1,450 | \$1,530 | \$1,680 | \$1,680 | \$1,810 | \$1,910 | \$2,010 | \$2,590 | 54.2% | 28.9% |
| Illinois Valley | \$1,724 | \$1,742 | \$1,848 | \$1,742 | \$1,742 | \$1,898 | \$1,973 | \$2,168 | \$2,103 | \$2,283 | 20.3% | 8.6% |
| John Logan | \$1,380 | \$1,470 | \$1,620 | \$1,710 | \$1,830 | \$1,920 | \$2,010 | \$2,130 | \$2,280 | \$2,520 | 31.3% | 10.5% |
| John Wood | \$1,740 | \$1,890 | \$2,130 | \$2,400 | \$2,430 | \$2,670 | \$3,120 | \$3,120 | \$3,210 | \$3,810 | 42.7% | 18.7% |
| Joliet Jr | \$1,590 | \$1,680 | \$1,815 | \$2,040 | \$2,130 | \$2,190 | \$2,280 | \$2,640 | \$2,790 | \$3,090 | 41.1% | 10.8% |
| Kankakee | \$1,335 | \$1,320 | \$1,650 | \$1,800 | \$1,800 | \$1,980 | \$2,070 | \$2,220 | \$2,520 | \$2,970 | 50.0% | 17.9% |
| Kaskaskia | \$1,290 | \$1,440 | \$1,570 | \$1,650 | \$1,800 | \$1,890 | \$2,040 | \$2,190 | \$2,430 | \$2,640 | 39.7% | 8.6% |
| Kishwaukee | \$1,470 | \$1,770 | \$1,830 | \$1,970 | \$2,100 | \$2,220 | \$2,310 | \$2,430 | \$2,500 | \$2,850 | 28.4% | 14.0% |
| Lake County | \$1,650 | \$1,650 | \$1,680 | \$1,921 | \$2,101 | \$2,400 | \$2,700 | \$2,850 | \$2,850 | \$2,968 | 23.7% | 4.1% |
| Lake Land | \$1,614 | \$1,614 | \$1,770 | \$1,904 | \$1,919 | \$2,097 | \$2,214 | \$2,394 | \$2,544 | \$2,820 | 34.5% | 10.8% |
| Lewis and Clark | \$1,740 | \$1,740 | \$1,890 | \$2,010 | \$2,220 | \$2,400 | \$2,400 | \$2,700 | \$2,820 | \$3,120 | 30.0% | 10.6% |
| Lincoln Land | \$1,380 | \$1,500 | \$1,575 | \$1,770 | \$1,986 | \$2,040 | \$2,460 | \$2,505 | \$2,700 | \$2,820 | 38.2% | 4.4% |
| McHenry County | \$1,544 | \$1,724 | \$1,874 | \$2,024 | \$2,174 | \$2,488 | \$2,474 | \$2,594 | \$2,684 | \$2,744 | 10.3% | 2.2% |
| Moraine Valley | \$1,620 | \$1,682 | \$1,741 | \$1,920 | \$2,070 | \$2,162 | \$2,162 | \$2,466 | \$2,766 | \$3,006 | 39.0% | 8.7% |
| Morton | \$1,440 | \$1,440 | \$1,590 | \$1,890 | \$2,090 | \$2,210 | \$2,452 | \$2,580 | \$2,580 | \$3,188 | 44.3% | 23.6% |
| Oakton | \$1,563 | \$1,728 | \$1,878 | \$1,993 | \$2,228 | \$2,358 | \$2,578 | \$2,678 | \$2,738 | \$2,838 | 20.4% | 3.7% |
| Parkland | \$1,620 | \$1,650 | \$1,800 | \$2,010 | \$2,070 | \$2,310 | \$2,550 | \$2,610 | \$2,760 | \$2,820 | 22.1% | 2.2% |
| Prairie State | \$1,800 | \$2,120 | \$2,120 | \$2,300 | \$2,300 | \$2,480 | \$2,620 | \$2,620 | \$2,760 | \$2,960 | 19.4% | 7.2% |
| Rend Lake | \$1,440 | \$1,536 | \$1,536 | \$1,710 | \$1,860 | \$1,950 | \$2,070 | \$2,220 | \$2,370 | \$2,550 | 30.8% | 7.6% |
| Richland | \$1,520 | \$1,580 | \$1,635 | \$1,665 | \$1,870 | \$1,940 | \$2,070 | \$2,230 | \$2,490 | \$2,670 | 37.6% | 7.2% |
| Rock Valley | \$1,440 | \$1,440 | \$1,560 | \$1,786 | \$1,892 | \$2,084 | \$2,084 | \$2,220 | \$2,220 | \$2,679 | 28.6% | 20.7% |
| Sauk Valley | \$1,530 | \$1,770 | \$1,800 | \$1,980 | \$2,190 | \$2,400 | \$2,460 | \$2,550 | \$2,670 | \$2,970 | 23.8% | 11.2% |
| Shawnee | \$1,008 | \$1,008 | \$1,350 | \$1,463 | \$1,500 | \$1,800 | \$1,950 | \$2,160 | \$2,310 | \$2,610 | 45.0% | 13.0% |
| South Suburban | \$1,890 | \$1,890 | \$2,040 | \$2,340 | \$2,610 | \$2,910 | \$3,113 | \$3,112 | \$3,112 | \$3,124 | 7.4% | 0.4% |
| Southeastern | \$1,170 | \$1,470 | \$1,560 | \$1,710 | \$1,920 | \$1,980 | \$1,980 | \$2,220 | \$2,370 | \$2,610 | 31.8% | 10.1% |
| Southwestern | \$1,410 | \$1,470 | \$1,560 | \$1,650 | \$1,740 | \$1,890 | \$2,040 | \$2,250 | \$2,550 | \$2,790 | 47.6% | 9.4% |
| Spoon River | \$1,710 | \$1,710 | \$1,860 | \$1,965 | \$2,100 | \$2,250 | \$2,370 | \$2,640 | \$2,670 | \$3,000 | 33.3% | 12.4% |
| Triton | \$1,670 | \$1,670 | \$1,860 | \$1,980 | \$1,980 | \$1,930 | \$1,930 | \$2,170 | \$2,410 | \$2,890 | 49.7% | 19.9% |
| Waubonsee | \$1,640 | \$1,540 | \$1,670 | \$1,663 | \$1,920 | \$2,100 | \$2,250 | \$2,460 | \$2,700 | \$2,940 | 40.0% | 8.9% |
| Wm Rainey Harper | \$1,982 | \$2,102 | \$2,292 | \$2,544 | \$2,784 | \$2,964 | \$3,084 | \$3,234 | \$3,234 | \$3,489 | 17.7% | 7.9% |

| College | Community College Tuition and Fees, 2001-2002 through 2010-2011 | | | | | | | | | | % change | |
|-------------------|---|---------|---------|---------|---------|---------|---------|---------|---------|---------|----------|---------|
| | 2001-02 | 2002-03 | 2003-04 | 2004-05 | 2005-06 | 2006-07 | 2007-08 | 2008-09 | 2009-10 | 2010-11 | 2007-11 | 2010-11 |
| JJC | \$1,590 | \$1,635 | \$1,815 | \$2,040 | \$2,130 | \$2,190 | \$2,280 | \$2,640 | \$2,790 | \$3,090 | 41.1% | 10.8% |
| JJC Peer Group | \$1,721 | \$1,811 | \$1,920 | \$2,101 | \$2,296 | \$2,449 | \$2,695 | \$2,773 | \$2,912 | \$3,177 | 29.7% | 9.1% |
| Suburban Colleges | \$1,701 | \$1,800 | \$1,913 | \$2,124 | \$2,303 | \$2,482 | \$2,709 | \$2,769 | \$2,867 | \$3,107 | 25.2% | 8.4% |
| Illinois Average | \$1,561 | \$1,641 | \$1,779 | \$1,926 | \$2,066 | \$2,232 | \$2,392 | \$2,543 | \$2,681 | \$2,957 | 32.5% | 10.3% |

Source: Chronicle of Higher Education Tuition and Fee Database

| College | 4-year Public Tuition and Fees, 2001-2002 through 2010-2011 | | | | | | | | | | % change | |
|-------------------------|---|----------------|----------------|----------------|----------------|----------------|----------------|----------------|----------------|-----------------|--------------|-------------|
| | 2001-02 | 2002-03 | 2003-04 | 2004-05 | 2005-06 | 2006-07 | 2007-08 | 2008-09 | 2009-10 | 2010-11 | 2007-11 | 2010-11 |
| Chicago State | \$3,027 | \$3,779 | \$4,382 | \$6,143 | \$6,625 | \$7,138 | \$7,730 | \$8,878 | \$9,712 | \$9,446 | 32.3% | -2.7% |
| Eastern Illinois | \$4,297 | \$4,648 | \$4,980 | \$5,782 | \$5,842 | \$7,069 | \$7,990 | \$8,782 | \$9,429 | \$9,987 | 41.3% | 5.9% |
| Governors State | \$2,546 | \$2,823 | \$3,990 | \$4,612 | \$5,010 | \$5,478 | \$5,966 | \$7,542 | \$8,352 | \$8,742 | 59.6% | 4.7% |
| Illinois state | \$4,482 | \$5,036 | \$5,530 | \$6,328 | \$7,091 | \$8,040 | \$9,019 | \$9,814 | \$10,701 | \$11,077 | 37.8% | 3.5% |
| Northeastern | \$2,898 | \$3,330 | \$3,530 | \$4,496 | \$5,646 | \$6,261 | \$7,044 | \$8,016 | \$8,590 | \$9,100 | 45.3% | 5.9% |
| Northern Illinois | \$4,484 | \$5,175 | \$5,164 | \$5,946 | \$6,638 | \$7,205 | \$7,889 | \$8,524 | \$9,394 | \$10,355 | 43.7% | 10.2% |
| Southern Edwardsville | \$3,291 | \$3,709 | \$4,183 | \$4,859 | \$5,209 | \$7,789 | \$7,033 | \$7,831 | \$8,336 | \$8,401 | 7.9% | 0.8% |
| Southern Carbondale | \$4,254 | \$4,865 | \$5,521 | \$6,341 | \$6,831 | \$5,938 | \$8,899 | \$9,813 | \$10,411 | \$10,467 | 76.3% | 0.5% |
| Illinois Chicago | \$4,944 | \$6,592 | \$6,934 | \$7,652 | \$8,302 | \$9,742 | \$9,744 | \$11,710 | \$12,034 | \$12,056 | 23.8% | 0.2% |
| Illinois Springfield | \$3,715 | \$4,009 | \$4,318 | \$4,699 | \$5,375 | \$7,162 | \$7,826 | \$8,605 | \$9,007 | \$9,815 | 37.0% | 9.0% |
| Illinois Champaign | \$5,754 | \$6,704 | \$7,010 | \$7,966 | \$8,688 | \$9,882 | \$11,130 | \$12,240 | \$12,524 | \$13,096 | 32.5% | 4.6% |
| Western Illinois | \$4,467 | \$4,498 | \$4,997 | \$5,695 | \$6,411 | \$7,411 | \$8,079 | \$8,828 | \$8,958 | \$9,490 | 28.1% | 5.9% |
| Illinois Average | \$4,013 | \$4,597 | \$5,045 | \$5,877 | \$6,472 | \$7,426 | \$8,196 | \$9,215 | \$9,787 | \$10,169 | 36.9% | 3.9% |

Source: Chronicle of Higher Education Tuition and Fee Database

| College | 4-year Private Tuition and Fees, 2001-2002 through 2010-2011 | | | | | | | | | | % change | |
|-------------------|--|----------|----------|----------|----------|----------|----------|----------|----------|----------|----------|---------|
| | 2001-02 | 2002-03 | 2003-04 | 2004-05 | 2005-06 | 2006-07 | 2007-08 | 2008-09 | 2009-10 | 2010-11 | 2007-11 | 2010-11 |
| Augustana | \$18,720 | \$19,608 | \$20,829 | \$22,131 | \$23,456 | \$24,924 | \$26,484 | \$30,150 | \$31,326 | \$32,235 | 29.3% | 2.9% |
| Aurora | \$13,368 | \$13,767 | \$14,810 | \$14,750 | \$15,600 | \$16,190 | \$16,850 | \$17,500 | \$18,100 | \$18,700 | 15.5% | 3.3% |
| Benedictine | \$15,630 | \$16,660 | \$17,500 | \$18,300 | \$19,720 | \$20,310 | \$21,310 | \$22,310 | \$22,310 | \$23,250 | 14.5% | 4.2% |
| Blackburn | \$8,720 | \$9,470 | \$10,010 | \$12,360 | \$15,040 | \$15,700 | \$15,770 | \$13,610 | \$14,286 | \$14,996 | -4.5% | 5.0% |
| Bradley | \$15,370 | \$16,110 | \$16,910 | \$17,730 | \$18,630 | \$20,078 | \$21,378 | \$22,814 | \$24,224 | \$25,424 | 26.6% | 5.0% |
| Chicago | \$26,475 | \$27,825 | \$29,238 | \$30,729 | \$32,265 | \$34,005 | \$35,868 | \$37,632 | \$39,381 | \$41,091 | 20.8% | 4.3% |
| Chicago Art Inst. | \$21,300 | \$22,500 | \$24,000 | \$25,500 | \$27,150 | \$29,220 | \$31,040 | \$32,840 | \$34,600 | \$35,940 | 23.0% | 3.9% |
| Columbia | \$12,704 | \$14,104 | \$15,295 | \$15,270 | \$15,998 | \$16,788 | \$17,564 | \$18,430 | \$18,970 | \$19,590 | 16.7% | 3.3% |
| Concordia | \$15,000 | \$17,000 | \$18,200 | \$19,000 | \$20,000 | \$20,300 | \$21,320 | \$22,390 | \$23,458 | \$24,581 | 21.1% | 4.8% |
| DePaul | \$16,695 | \$18,020 | \$18,910 | \$19,840 | \$21,100 | \$22,575 | \$24,110 | \$26,068 | \$27,342 | \$28,858 | 27.8% | 5.5% |
| Dominican | \$15,700 | \$16,720 | \$17,950 | \$19,000 | \$20,050 | \$21,250 | \$22,450 | \$23,950 | \$24,850 | \$25,810 | 21.5% | 3.9% |
| East-West | \$9,140 | \$9,740 | \$10,395 | \$10,845 | \$11,445 | \$12,090 | \$12,825 | \$13,530 | \$15,795 | \$15,795 | 30.6% | 0.0% |
| Elmhurst | \$16,200 | \$17,500 | \$18,600 | \$20,090 | \$21,600 | \$23,260 | \$24,760 | \$26,060 | \$27,270 | \$28,600 | 23.0% | 4.9% |
| Eureka | \$16,900 | \$17,930 | \$19,100 | \$13,440 | \$13,400 | \$14,230 | \$15,270 | \$16,255 | \$17,390 | \$18,045 | 26.8% | 3.8% |
| Greenville | \$1,400 | \$14,860 | \$15,776 | \$16,834 | \$17,242 | \$17,932 | \$18,672 | \$19,428 | \$20,216 | \$20,924 | 16.7% | 3.5% |
| IIT | \$18,870 | \$19,756 | \$20,331 | \$21,548 | \$22,982 | \$24,113 | \$25,746 | \$27,513 | \$29,362 | \$32,393 | 34.3% | 10.3% |
| Illinois College | \$11,280 | \$11,850 | \$13,300 | \$14,600 | \$15,500 | \$17,100 | \$18,800 | \$20,300 | \$21,300 | \$22,800 | 33.3% | 7.0% |
| Illinois Wesleyan | \$21,640 | \$23,050 | \$24,540 | \$26,130 | \$27,624 | \$29,136 | \$30,750 | \$32,434 | \$33,982 | \$35,256 | 21.0% | 3.7% |
| Judson | \$14,422 | \$15,510 | \$16,050 | \$17,150 | \$18,500 | \$19,450 | \$20,420 | \$21,850 | \$23,500 | \$24,780 | 27.4% | 5.4% |
| Kendall | \$14,300 | \$13,500 | n/a | n/a | n/a | n/a | n/a | n/a | n/a | n/a | n/a | n/a |
| Knox | \$22,620 | \$23,499 | \$24,369 | \$25,236 | \$26,100 | \$27,900 | \$29,178 | \$30,507 | \$31,911 | \$33,024 | 18.4% | 3.5% |
| Lake Forest | \$22,206 | \$23,286 | \$24,406 | \$25,828 | \$27,334 | \$29,034 | \$30,964 | \$32,520 | \$34,206 | \$35,525 | 22.4% | 3.9% |
| Lewis | \$14,040 | \$15,250 | \$15,950 | \$16,991 | \$18,075 | \$19,825 | \$20,450 | \$21,990 | \$22,990 | \$23,780 | 19.9% | 3.4% |
| Loyola | \$19,274 | \$19,932 | \$21,054 | \$22,340 | \$24,612 | \$26,886 | \$27,966 | \$29,486 | \$30,656 | \$31,846 | 18.4% | 3.9% |
| MacMurray | \$14,000 | \$14,500 | \$14,500 | \$14,500 | \$15,250 | \$15,750 | \$16,850 | \$17,450 | \$18,390 | \$19,310 | 22.6% | 5.0% |
| McKendree | \$13,350 | \$14,200 | \$15,200 | \$16,600 | \$17,800 | \$18,900 | \$20,150 | \$21,270 | \$22,070 | \$23,130 | 22.4% | 4.8% |
| Millikin | \$17,359 | \$18,384 | \$19,309 | \$20,308 | \$21,141 | \$22,069 | \$23,945 | \$25,295 | \$26,445 | \$27,425 | 24.3% | 3.7% |
| Monmouth | \$17,000 | \$17,760 | \$18,600 | \$19,350 | \$20,200 | \$23,100 | \$22,000 | \$24,000 | \$24,950 | \$26,900 | 16.5% | 7.8% |
| National Louis | \$13,995 | \$14,715 | \$16,200 | \$16,200 | \$16,935 | \$17,925 | \$17,925 | \$18,075 | \$18,435 | \$18,435 | 2.8% | 0.0% |
| North Central | \$17,175 | \$18,402 | \$19,446 | \$20,565 | \$21,933 | \$23,115 | \$23,115 | \$25,938 | \$26,916 | \$28,224 | 22.1% | 4.9% |
| North Park | \$17,790 | \$18,860 | \$19,470 | \$20,350 | \$13,900 | \$14,900 | \$16,500 | \$17,600 | \$18,800 | \$19,900 | 33.6% | 5.9% |
| Northwestern | \$25,839 | \$27,228 | \$28,524 | \$30,085 | \$31,789 | \$33,559 | \$35,429 | \$37,125 | \$38,461 | \$40,223 | 19.9% | 4.6% |
| Olivet Nazarene | \$13,464 | \$14,200 | \$14,980 | \$15,720 | \$16,490 | \$17,590 | \$19,590 | \$21,590 | \$23,590 | \$25,590 | 45.5% | 8.5% |
| Principia | \$16,840 | \$17,670 | \$18,540 | \$19,455 | \$20,415 | \$21,450 | \$22,080 | \$22,950 | \$22,950 | \$23,955 | 11.7% | 4.4% |
| Quincy | \$15,430 | \$16,360 | \$16,850 | \$17,650 | \$18,330 | \$19,010 | \$19,600 | \$20,790 | \$22,030 | \$23,000 | 21.0% | 4.4% |
| Robert Morris | \$12,150 | \$12,750 | \$13,500 | \$14,250 | \$15,375 | \$15,900 | \$16,800 | \$18,000 | \$19,200 | \$20,100 | 26.4% | 4.7% |
| Rockford | \$17,450 | \$18,320 | \$20,210 | \$21,200 | \$22,460 | \$22,460 | \$22,950 | \$23,500 | \$24,250 | \$24,750 | 10.2% | 2.1% |
| Roosevelt | \$13,970 | \$14,660 | \$15,430 | \$16,330 | \$14,430 | \$15,564 | \$16,930 | \$19,000 | \$21,000 | \$23,000 | 47.8% | 9.5% |

| College | 4-year Private Tuition and Fees, 2001-2002 through 2010-2011 | | | | | | | | | | % change | |
|-------------------|--|----------|----------|----------|----------|----------|----------|----------|----------|----------|----------|---------|
| | 2001-02 | 2002-03 | 2003-04 | 2004-05 | 2005-06 | 2006-07 | 2007-08 | 2008-09 | 2009-10 | 2010-11 | 2007-11 | 2010-11 |
| St Francis | \$14,990 | \$16,030 | \$16,820 | \$17,670 | \$18,530 | \$19,450 | \$20,830 | \$21,860 | \$22,698 | \$24,742 | 27.2% | 9.0% |
| St Xavier | \$15,130 | \$15,880 | \$16,670 | \$17,320 | \$18,520 | \$19,860 | \$21,236 | \$22,926 | \$24,465 | \$25,520 | 28.5% | 4.3% |
| Trinity Christian | \$13,970 | \$14,640 | \$15,490 | \$16,400 | \$17,135 | \$18,115 | \$19,241 | \$20,256 | \$20,959 | \$21,733 | 20.0% | 3.7% |
| Wheaton | \$16,390 | \$17,320 | \$18,500 | \$20,000 | \$21,100 | \$22,450 | \$23,730 | \$25,500 | \$26,520 | \$27,580 | 22.9% | 4.0% |
| Illinois Average | \$15,911 | \$17,127 | \$18,189 | \$19,015 | \$19,882 | \$21,060 | \$22,167 | \$23,480 | \$24,623 | \$25,775 | 22.4% | 4.7% |

Source: Chronicle of Higher Education Tuition and Fee Database