



# FACES OF THE FUTURE



Employment Information  
Office of Institutional Effectiveness

[www.jjc.edu/admin/ie](http://www.jjc.edu/admin/ie)

March 2006

This summary is part of a larger analysis related to the Faces of the Future Survey available on-line at <http://www.jjc.edu/admin/ie/information/Surveys/surveys.htm>

# EMPLOYMENT INFORMATION

- More JJC students report being employed than students at other community colleges.
- About 66% of community college students consider themselves students first and employees second.
- About half of JJC and community college students work 30 hours or less per week. The number of hours students work per week has not changed significantly over the last seven years.
- About 40% of JJC students work during the day (9AM - 5PM). Another 40% work in the second shift (5PM - 12AM).

## National Research on the Role of Employment

- About 80% of community college students are employed; about 50% of them full-time.<sup>1</sup>
- 46% of full-time students and 64% of part-time students work part-time. 77% of full-time students and 55% of part-time students work full-time.
- The 66% of community college students who consider themselves students first and employees second is lower than the national public 4-year college average of 82%.<sup>2</sup> There are differences by age in terms of whether students view their primary role, as shown in the table below.

*Student Perceptions of Primary Role at Community Colleges, Based on National Data<sup>3</sup>*

AGE	PRIMARY ROLE: STUDENT	PRIMARY ROLE: EMPLOYEE
16-20	76%	24%
21-23	43%	57%
24-29	25%	75%
30+	26%	74%
<b>ALL STUDENTS</b>	<b>62%</b>	<b>38%</b>

<sup>1</sup> American Association of Community Colleges. (2005). *National profile of community colleges: Trends & statistics*. Washington, DC.

<sup>2</sup> U.S. Department of Education. (2004). *National postsecondary student aid study*. Washington, DC: National Center for Education Statistics.

<sup>3</sup> Adelman, C. (2005). *Moving into town and moving on: The community college in the lives of traditional-age students*. Washington, DC: U.S. Department of Education.

## What Students Say about How Work Impacts College

National data suggests that students feel working while enrolled in college helps them with coursework and career preparation. Additionally, holding an on-campus job has a positive impact on academic success and goal completion for community college students.<sup>4</sup> As the number of hours a student works increases, however, students report negative impact on their grades, as shown in the following table. Additionally, research indicates that 8% of community college students who average 35 hours or more a week at work eventually obtain an Associate's degree, compared to 20% of students who average 35 hours a week or less. Only 3% of community college students who average more than 35 hours working per week eventually obtain a Bachelor's Degree, compared to 14% of community college students who work 35 hours a week or less.<sup>5</sup>

*Working while Enrolled in College and Impact on Grades, Based on National Data<sup>6</sup>*

HOURS WORKED PER WEEK	POSITIVE EFFECT	NO EFFECT	NEGATIVE EFFECT
1-15	29.1%	57.1%	13.8%
16-20	26.9%	48.2%	24.9%
21-30	23.0%	39.7%	37.3%
OVER 30	22.6%	35.9%	41.5%
ALL STUDENTS	25.9%	47.1%	27.0%

---

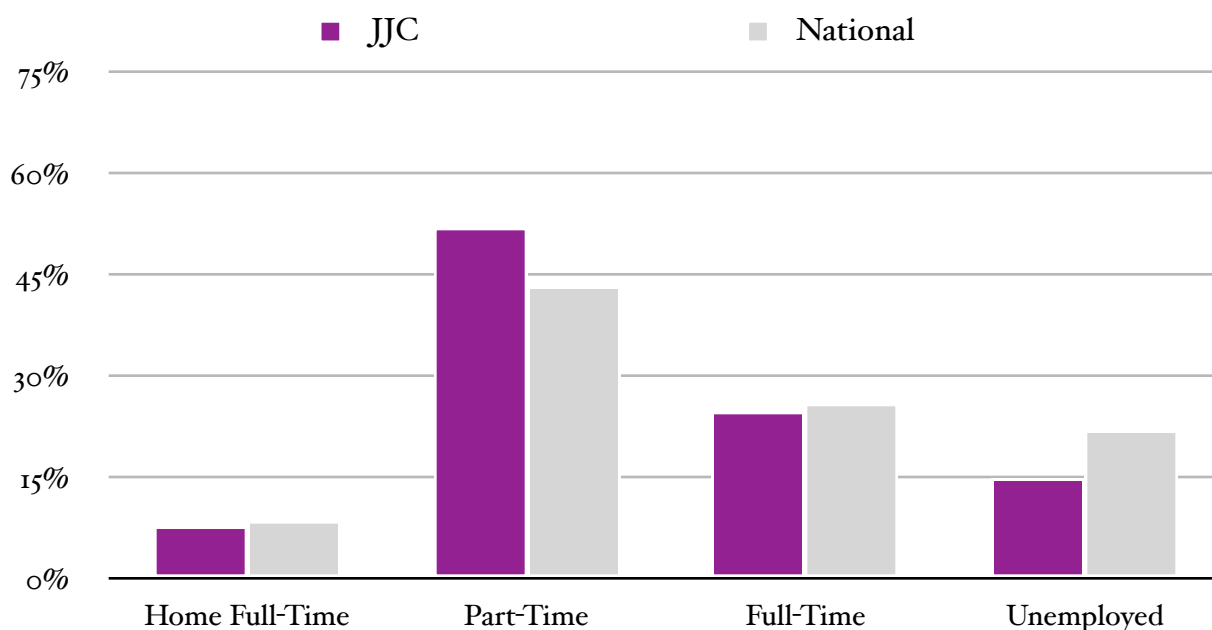
<sup>4</sup> Adelman (2005).

<sup>5</sup> U.S. Department of Education. (2003). *Community college students: Goals, academic preparation, & outcomes*. Washington, DC: National Center for Education Statistics.

<sup>6</sup> U.S. Department of Education. (2003). *How families of low and middle-income undergraduates pay for college*. Washington, DC: National Center for Education Statistics. Table adapted from page 49.

# Full/Part-Time Employment

*Student Reported Full or Part-Time Employment Status, Fall 2005*

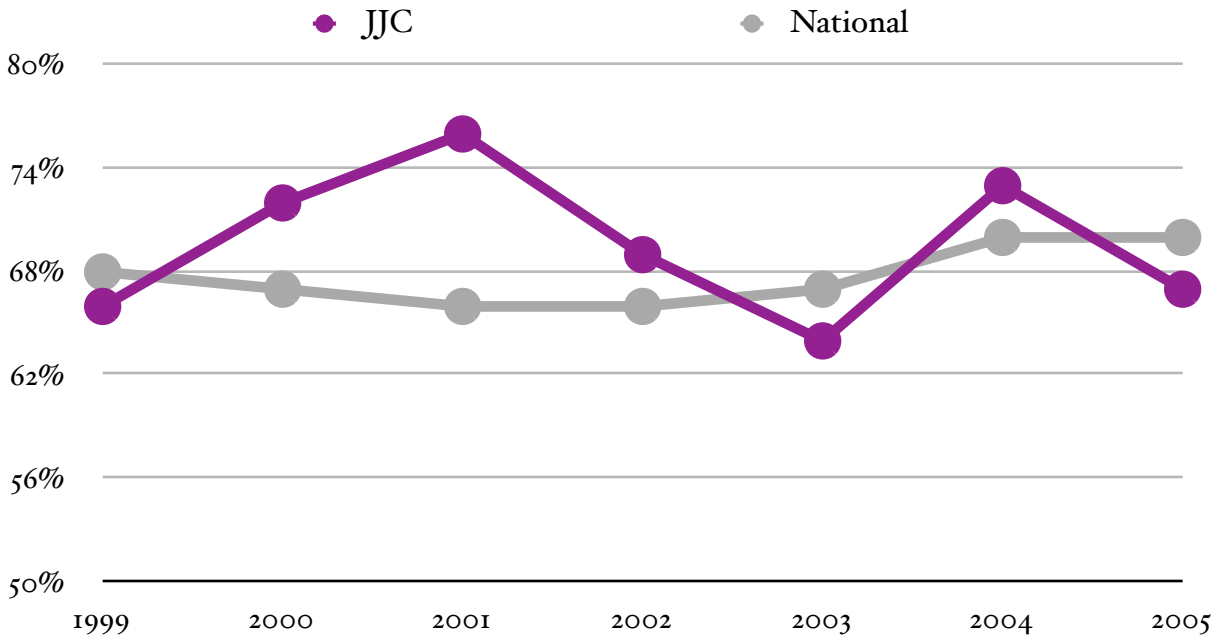


FALL	JJC				NATIONAL			
	Home Full-Time	Part-Time	Full-Time	Unemployed	Home Full-Time	Part-Time	Full-Time	Unemployed
1999	5.4%	55.4%	28.3%	11.0%	7.4%	44.9%	28.0%	19.7%
2000	5.6%	53.3%	27.7%	13.4%	7.7%	44.1%	28.6%	19.6%
2001	4.9%	59.3%	19.4%	16.4%	8.0%	42.5%	29.0%	20.5%
2002	3.4%	52.3%	27.9%	16.4%	7.9%	40.9%	28.7%	22.4%
2003	7.0%	48.4%	30.3%	14.2%	8.0%	41.2%	28.2%	22.7%
2004	5.2%	57.0%	22.9%	14.9%	7.9%	42.9%	26.1%	23.1%
2005	7.9%	52.3%	24.9%	15.2%	8.7%	43.5%	25.9%	22.0%

*Note.* Unemployed includes both “Unemployed - Seeking” and “Employed - Seeking.”

# Student Employment Status

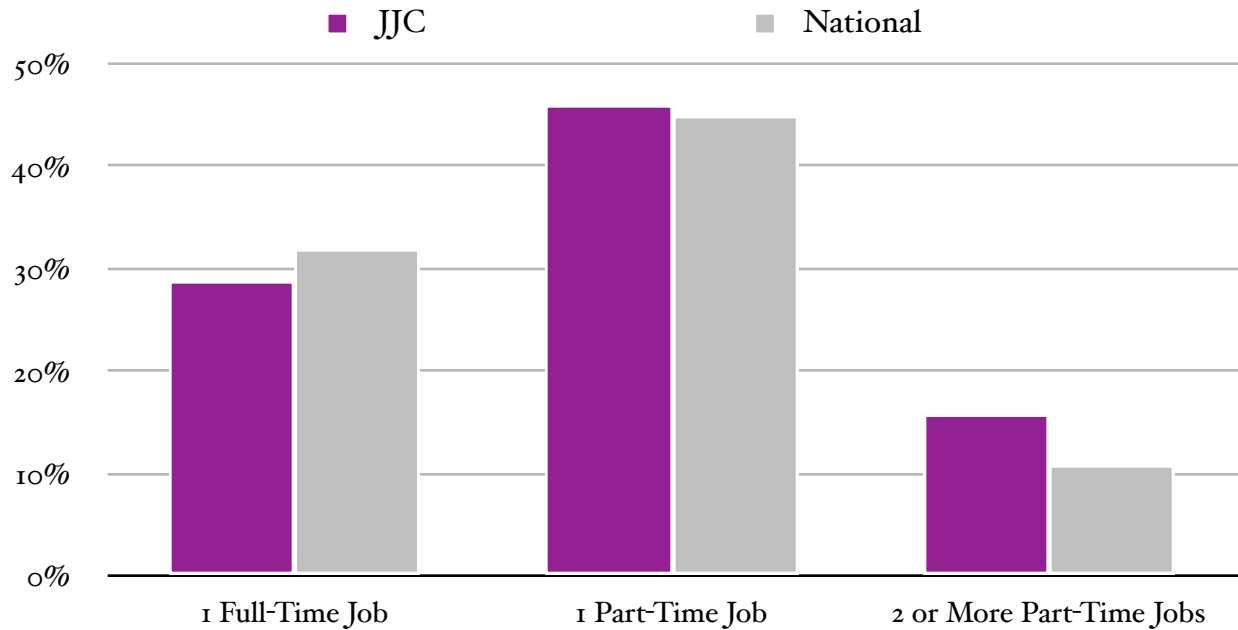
*Percent of Students who Identify Themselves as Primarily a Student, Fall 1999-2005*



F A L L	J J C		N A T I O N A L	
	Student	Employee	Student	Employee
1 9 9 9	66.2%	33.8%	67.5%	32.5%
2 0 0 0	71.7%	28.3%	67.4%	32.6%
2 0 0 1	76.4%	23.6%	66.4%	33.6%
2 0 0 2	68.8%	31.2%	66.4%	33.6%
2 0 0 3	64.0%	36.0%	66.9%	33.1%
2 0 0 4	72.8%	27.2%	69.5%	30.5%
2 0 0 5	67.0%	33.0%	69.6%	30.4%

# Number of Jobs Held

*Number of Jobs Held Reported by Students, Fall 2005*

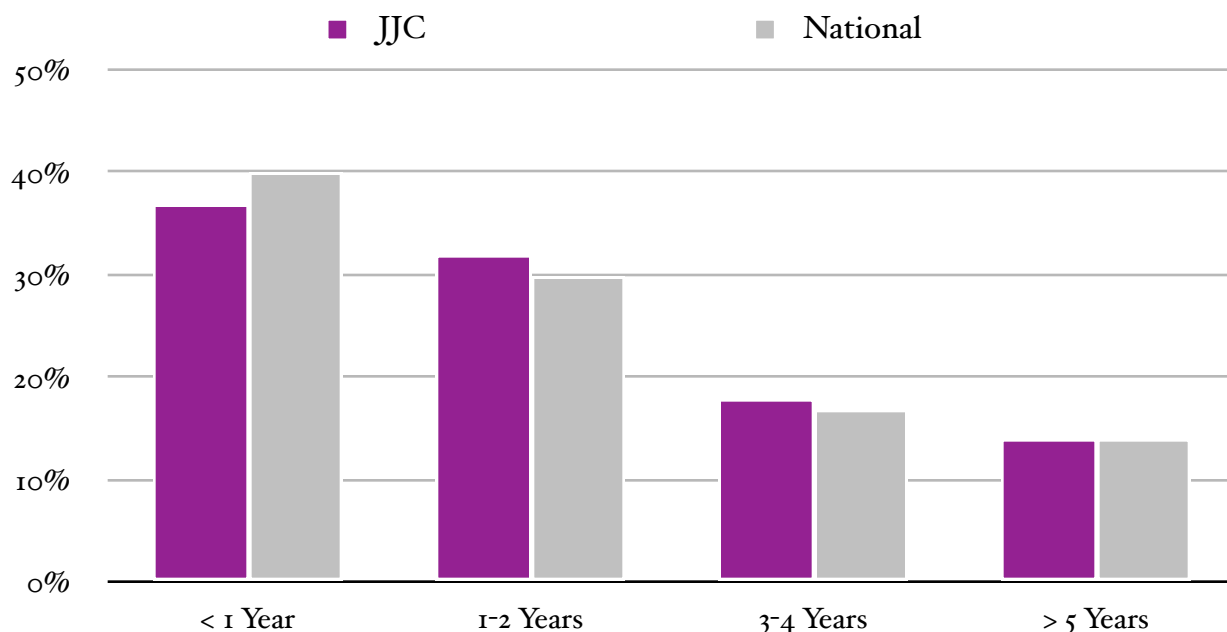


FALL	JJC				NATIONAL			
	1 Full-Time	2 Full-Time	1 Part-Time	2 or more Part-Time	1 Full-Time	2 Full-Time	1 Part-Time	2 or more Part-Time
1999	29.7%	0.0%	52.3%	10.1%	33.1%	1.2%	45.3%	11.2%
2000	30.1%	1.0%	52.3%	11.4%	34.4%	1.3%	44.7%	10.9%
2001	22.1%	1.5%	55.5%	13.0%	35.4%	1.3%	44.0%	10.2%
2002	30.1%	0.9%	47.7%	11.6%	35.7%	1.3%	43.5%	9.8%
2003	29.1%	1.9%	43.0%	15.5%	34.7%	1.3%	44.0%	9.9%
2004	22.9%	2.4%	49.1%	18.0%	32.4%	1.4%	45.0%	10.9%
2005	29.2%	1.5%	46.1%	16.4%	31.7%	1.4%	45.3%	11.1%

*Note.* Table does not include percent of students who identify themselves as “Occasional Workers.” Between Fall 1999 and 2005, the percent of Joliet Junior College identifying themselves under this status has ranged between 5% and 11%.

# Years Employed at Current Job

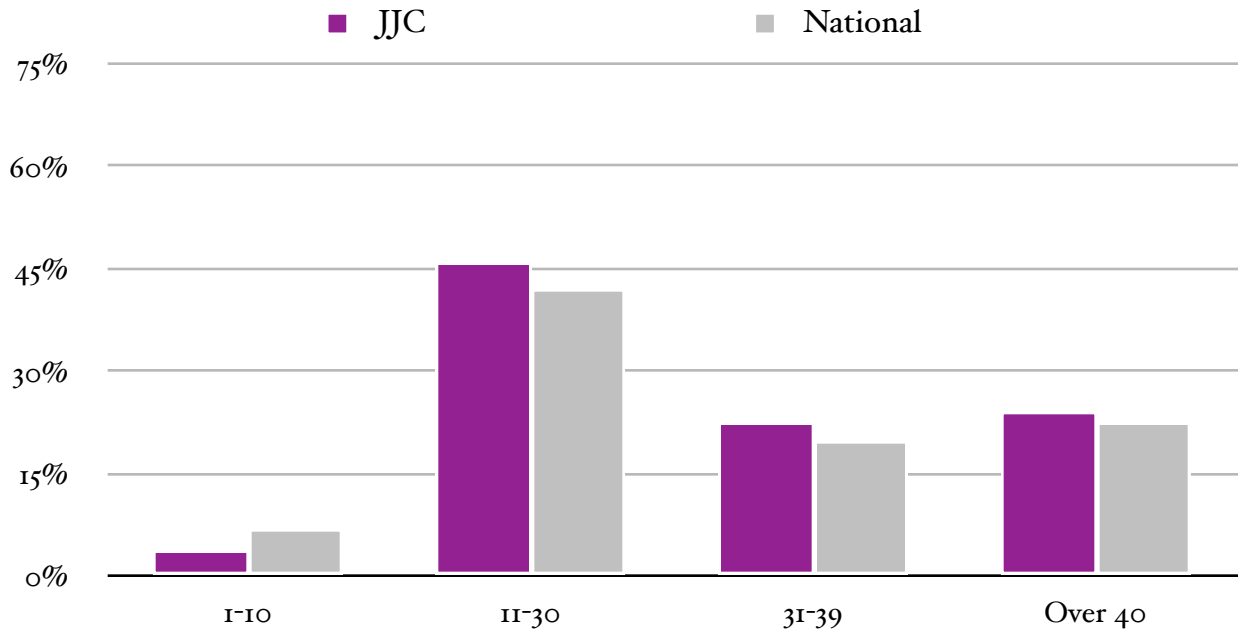
*Student Reported Years Employed at Current Job, Fall 2005*



FALL	JJC				NATIONAL			
	Less than 1 year	1-2 years	3-4 years	5 or more years	Less than 1 year	1-2 years	3-4 years	5 or more years
1999	32.5%	35.9%	16.9%	14.7%	41.1%	29.4%	14.6%	14.8%
2000	48.1%	22.8%	15.4%	13.7%	41.8%	29.4%	14.9%	14.0%
2001	41.9%	36.5%	13.0%	8.5%	40.3%	30.7%	14.8%	14.2%
2002	39.2%	28.5%	18.2%	14.1%	38.5%	31.7%	15.6%	14.2%
2003	30.4%	31.1%	22.2%	16.3%	38.9%	31.0%	16.2%	13.9%
2004	31.4%	38.2%	22.0%	8.4%	39.3%	30.3%	16.8%	13.6%
2005	36.5%	31.6%	17.7%	14.2%	39.6%	29.7%	16.5%	14.1%

# Hours Worked per Week

*Hours per Week Working While Enrolled as Reported by Students, Fall 2005*

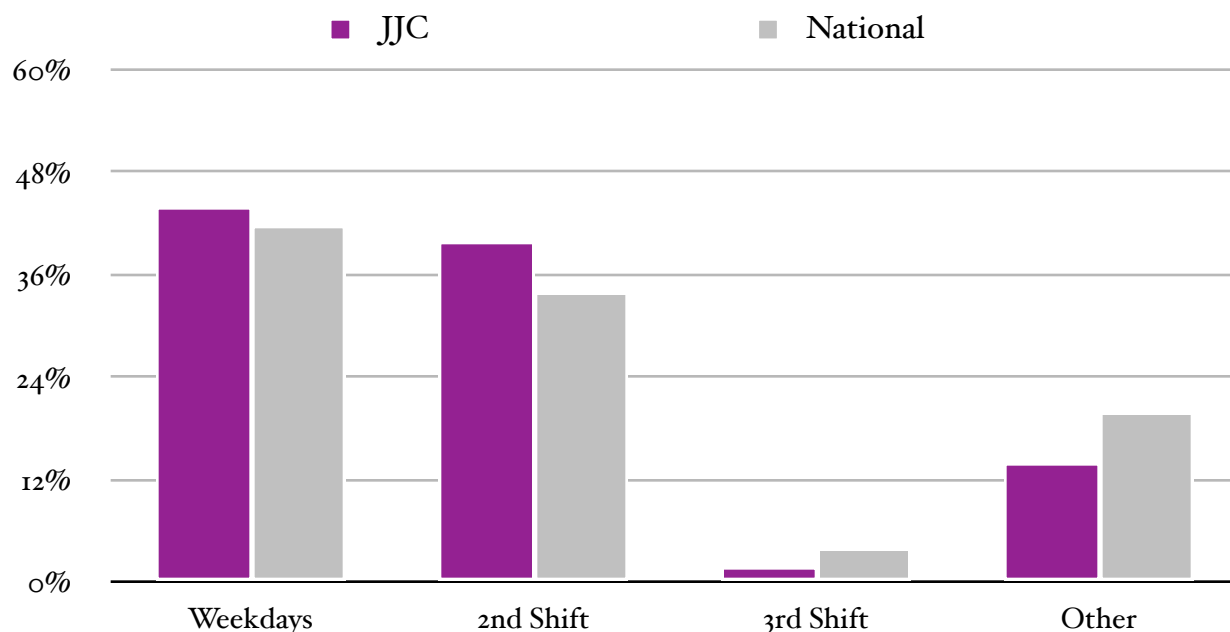


FALL	JJC				NATIONAL			
	1-10	11-30	31-39	40 or more	1-10	11-30	31-39	40 or more
1999	5.0%	49.3%	22.5%	18.0%	7.5%	43.5%	24.9%	16.9%
2000	5.7%	51.9%	17.8%	21.4%	7.1%	41.6%	18.0%	26.2%
2001	5.1%	56.4%	18.6%	14.2%	7.0%	40.6%	18.5%	26.5%
2002	5.0%	46.4%	18.8%	24.8%	7.1%	39.7%	18.9%	26.6%
2003	7.4%	43.6%	20.6%	21.9%	7.1%	40.0%	19.3%	25.5%
2004	4.1%	52.2%	21.5%	15.0%	7.4%	41.5%	19.5%	23.0%
2005	4.1%	46.0%	22.5%	24.2%	6.9%	42.2%	20.0%	22.5%

*Note.* Table does not include the percent of students who responded to this question with “Don’t Know.”

# Primary Work Shifts

*Times Worked at Primary Job as Reported by Students, Fall 2005*

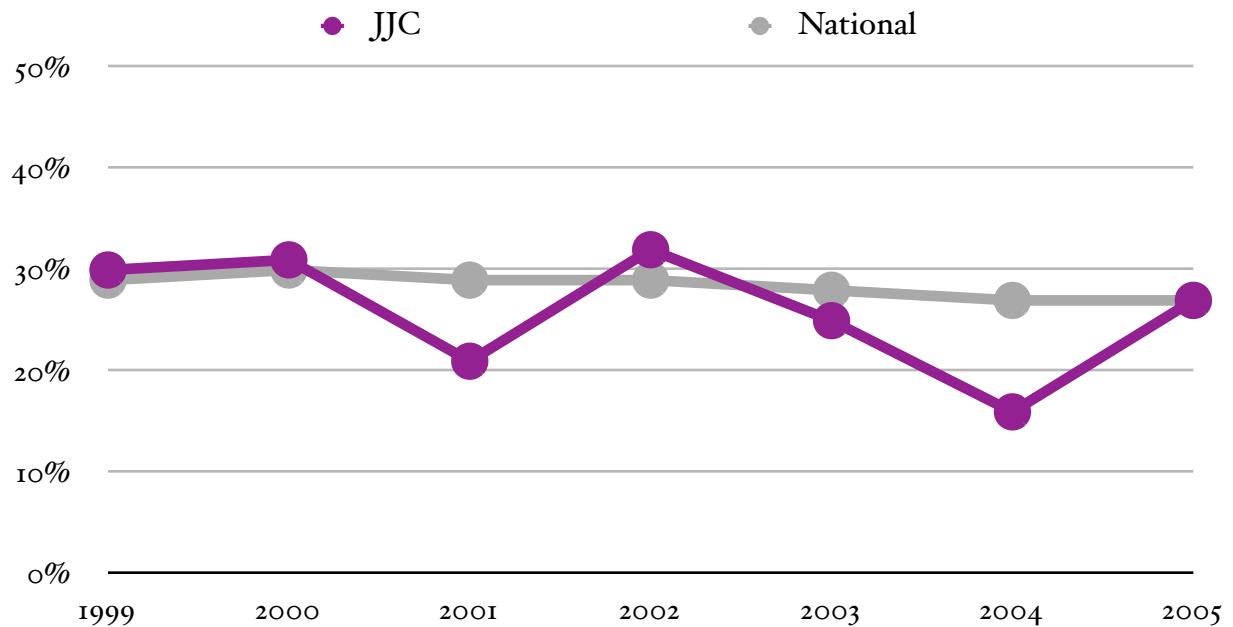


FALL	JJC				NATIONAL			
	Weekdays	Evenings 2nd shift	Overnight 3rd shift	Other	Weekdays	Evenings 2nd shift	Overnight 3rd shift	Other
1999	33.2%	47.1%	3.3%	16.3%	43.8%	35.2%	3.2%	17.8%
2000	42.8%	41.7%	4.4%	11.1%	43.1%	35.5%	3.7%	17.8%
2001	37.1%	47.8%	2.0%	13.0%	44.3%	34.0%	4.0%	17.6%
2002	40.9%	43.2%	3.0%	12.9%	44.8%	33.3%	4.0%	17.9%
2003	37.8%	37.8%	2.8%	21.6%	44.2%	33.0%	4.1%	18.7%
2004	39.1%	42.6%	1.9%	16.4%	42.3%	34.6%	3.7%	19.5%
2005	43.5%	39.7%	2.6%	14.2%	41.9%	34.2%	4.0%	19.8%

*Note.* Weekdays (8AM-4PM; 9AM-5PM); Evenings (second shift, about 5PM-12AM); Overnight (third shift, about 12AM-8AM).

# Employer Contributions

*Percent of Students who Report their Employers Contribute to All or Part of Their Educational Expenses, Fall 1999-2005*

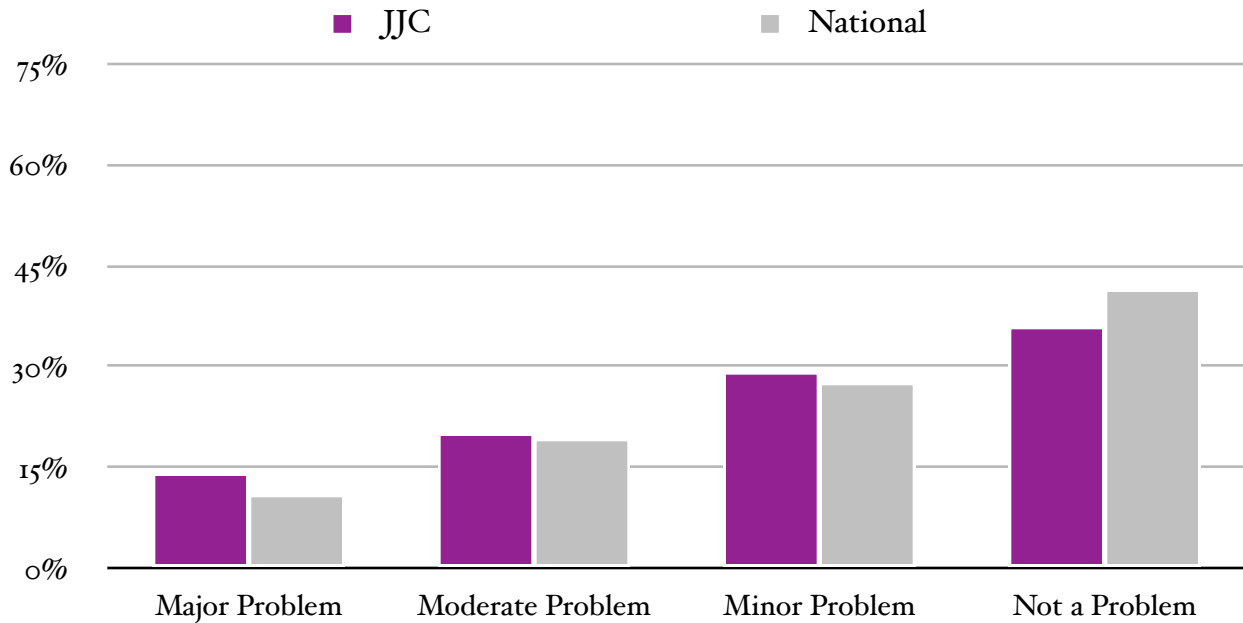


FALL	JJC				NATIONAL			
	None	All of tuition	Part of tuition	Books, Supplies, & Trans.	None	All of tuition	Part of tuition	Books, Supplies, & Trans.
1999	70.4%	7.6%	8.5%	7.0%	71.4%	6.8%	7.4%	5.7%
2000	69.0%	6.9%	11.4%	6.9%	70.2%	6.6%	8.4%	6.6%
2001	79.1%	3.2%	6.8%	4.5%	70.6%	6.9%	7.9%	6.6%
2002	67.9%	8.6%	11.6%	7.3%	70.5%	6.7%	8.0%	6.7%
2003	75.3%	2.9%	9.7%	5.8%	72.0%	6.4%	7.3%	6.4%
2004	83.8%	4.2%	5.0%	2.6%	73.1%	5.5%	6.9%	6.0%
2005	73.0%	4.5%	7.8%	6.4%	73.3%	5.9%	6.5%	6.0%

*Note.* Trans. is an abbreviation of transportation. Table does not include employer contributions to dependent care, which was 0.3%, 0.3%, 0.6%, 0.6%, 0.6%, 0.3%, and 0.5% at JJC and 0.8%, 0.9%, 0.8%, 0.7%, 0.7%, 0.8%, and 0.7% nationally between Fall 1999 and 2005.

# Problems with Job-Related Responsibilities

*Percent of Students who Reported Problems with Job-Related Responsibilities while Enrolled in College, Fall 2005*



FALL	JJC				NATIONAL			
	Major Problem	Moderate Problem	Minor Problem	Not a Problem	Major Problem	Moderate Problem	Minor Problem	Not a Problem
1999	10.0%	17.7%	31.9%	40.4%	11.5%	20.3%	27.7%	40.5%
2000	10.8%	20.1%	29.7%	39.4%	11.2%	19.8%	27.5%	41.5%
2001	6.8%	17.5%	30.8%	44.9%	11.0%	19.3%	27.0%	42.6%
2002	8.9%	18.5%	32.0%	40.6%	11.3%	19.1%	27.0%	42.5%
2003	10.8%	22.7%	29.4%	37.1%	11.2%	19.2%	27.0%	42.6%
2004	9.5%	21.8%	31.8%	36.9%	11.5%	19.7%	27.4%	41.4%
2005	14.2%	20.1%	29.4%	36.3%	11.3%	19.4%	27.6%	41.8%

*Note.* This chart & table are also in the section on *Problems Associated with Dependent Care, Health, Transportation, Employment, & Finances*. Students were allowed to select the option “Does not apply” for this question. Those responses were removed from this table. Thus, the data represented in this table are only for students who replied that this area was applicable to them.