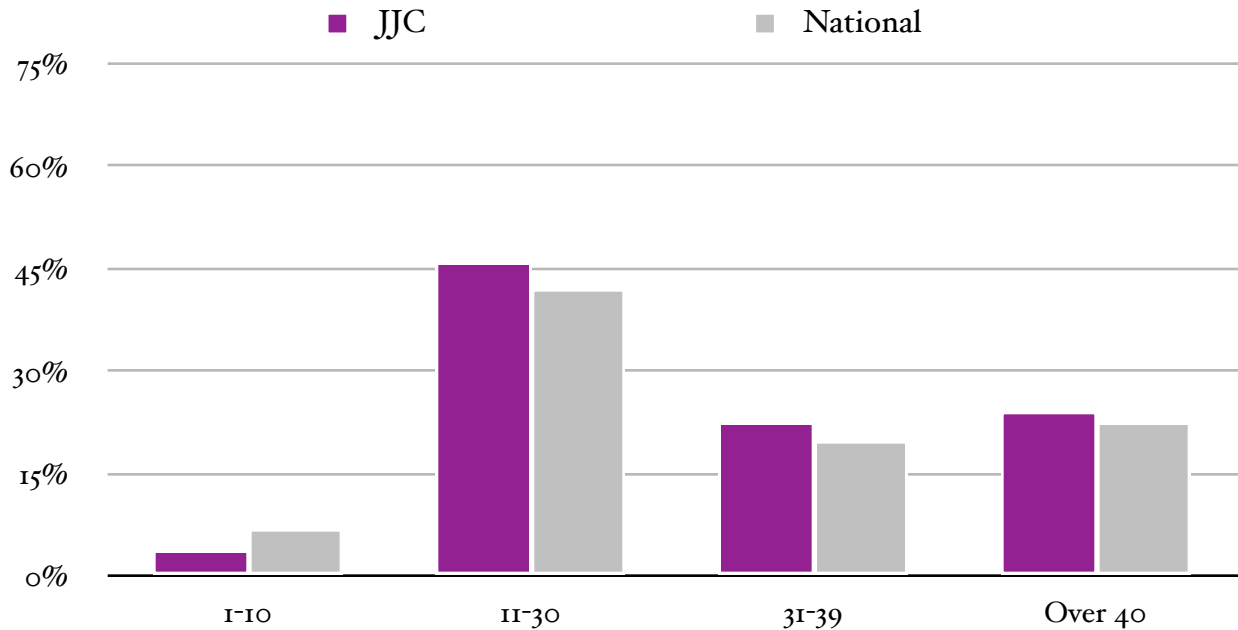


Hours Worked per Week

Hours per Week Working While Enrolled as Reported by Students, Fall 2005



FALL	JJC				NATIONAL			
	1-10	11-30	31-39	40 or more	1-10	11-30	31-39	40 or more
1999	5.0%	49.3%	22.5%	18.0%	7.5%	43.5%	24.9%	16.9%
2000	5.7%	51.9%	17.8%	21.4%	7.1%	41.6%	18.0%	26.2%
2001	5.1%	56.4%	18.6%	14.2%	7.0%	40.6%	18.5%	26.5%
2002	5.0%	46.4%	18.8%	24.8%	7.1%	39.7%	18.9%	26.6%
2003	7.4%	43.6%	20.6%	21.9%	7.1%	40.0%	19.3%	25.5%
2004	4.1%	52.2%	21.5%	15.0%	7.4%	41.5%	19.5%	23.0%
2005	4.1%	46.0%	22.5%	24.2%	6.9%	42.2%	20.0%	22.5%

Note. Table does not include the percent of students who responded to this question with “Don’t Know.”