



JOLIET JUNIOR COLLEGE
—1901—

2009 Fall Census Briefing

September 8, 2009

Institutional Research and Effectiveness

Headcount/Credit Hours

Fall 2009 headcount is 15,288, up 8.5% from last Fall (+1,200 students). This is the largest census headcount in JJC's history. Credit hours for Fall 2009 are up 9.9% from last Fall (+12,722.5 credit hours). This is the largest census credit hour count in JJC's history. The number of students enrolling in at least one web-based course has increased from 1,635 students for the Fall 2008 census to 2,109 students in Fall 2009 (+29.0%).

Table 1. Unduplicated Headcount Fall Census 2008/2009

Unduplicated Headcount		Credit Hours	
Fall 2008-09/09/2008	14,088	Fall 2008-09/09/2008	128,569.5
Fall 2009-09/08/2009	15,288	Fall 2009-09/08/2009	141,292.0
% Difference	8.5%	% Difference	9.9%

Enrollment by Full-Time/Part-Time Status

Part-time students represent 56.4% of the Fall 2009 census headcount, this is a 7.3% increase (+586 part-time students) from Fall 2008. JJC witnessed a 10.1% increase to the number of full-time students for Fall 2009 (6,668 full-time students), this is an increase of 614 full-time students from the Fall 2008 census of 6,054 full-time students.

Table 2. Enrollment by Full-Time/Part-Time Status Fall Census 2008/2009

Term	Full-Time	Part-Time	Total
Fall 2008-09/09/2008	6,054	8,034	14,088
Fall 2009-09/08/2009	6,668	8,620	15,288
Total	10.1%	7.3%	8.5%

Enrollment by Gender and Ethnicity

The number of male credit students has increased by 15.1% (+878 males) from the previous Fall term. The overall percent of males compared to the Fall 2009 census total is 43.8%, this represents a +2.5 percentage point change from the 41.3% proportion of males represented in Fall 2008.

The minority population at JJC represents 27.5% of the total census headcount for Fall 2009, slightly down from 28.9% from the Fall 2008 census. The minority population has increased significantly since Fall 1998 where the minority groups represented only 14.6% of the overall population. For the Fall 2009 census Black Non-Hispanic students witnessed an increase of 7.0% (+104 students) from the previous Fall census, while the Hispanic population has seen a 0.7% increase for Fall 2009 (+15 students), and the White Non-Hispanic student population has increased by 1.5% (+146 students) over the last Fall census. *Please note small number changes can result in large percent changes for groups with low counts.*

Table 3. Headcount by Ethnicity and Gender Fall Census 2008/2009

Ethnicity	Fall 2008			Fall 2009			% Change		
	Female	Male	Total	Female	Male	Total	Female	Male	Total
Asian	219	175	394	201	192	393	-8.2%	9.7%	-0.3%
Native American	14	14	28	11	20	31	-21.4%	42.9%	10.7%
Black Non-Hispanic	903	592	1,495	940	659	1,599	4.1%	11.3%	7.0%
Hispanic	1,327	823	2,150	1,316	849	2,165	-0.8%	3.2%	0.7%
White Non-Hispanic	5,796	4,215	10,011	5,663	4,494	10,157	-2.3%	6.6%	1.5%
Non-Resident Alien	8	2	10	9	4	13	12.5%	100.0%	30.0%
Unknown/Other	0	0	0	449	481	930	-	-	-
Total	8,267	5,821	14,088	8,589	6,699	15,288	3.9%	15.1%	8.5%

Enrollment by Age

Nearly thirty-eight percent (37.8%) of the Fall 2009 credit students are 25 years of age or older representing a 0.8% decrease from the 38.6% represented at the Fall 2008 census for this age category. The largest number change is the 17-20 age category with an increase of 624 students (+10.3%). The full-time and part-time average ages for Fall 2009 are 21.2 and 30.4 years respectively, resulting in an overall average age of 26.4 years. *Please note small number changes can result in large percent changes for groups with low counts.*

Table 4. Enrollment by Age Category Fall Census 2008/2009

Age Category	Fall 2008	Fall 2009	2008-2009	
			# Change	% Change
16 & Under	86	102	16	18.6%
17-20	6,085	6,709	624	10.3%
21-24	2,448	2,672	224	9.2%
25-30	1,679	1,823	144	8.6%
31-39	1,776	1,848	72	4.1%
40-55	1,711	1,825	114	6.7%
56-99	277	285	8	2.9%
Unknown	26	24	-2	-7.7%
Total	14,088	15,288	1,200	8.5%

Table 5. Average Age by Full-Time and Part-Time Status Fall Census 2008/2009

Status	Fall 2008	Fall 2009
Full-Time Average	21.0	21.2
Part-Time Average	30.7	30.4
Overall Average Age	26.5	26.4

Enrollment by Registration Status

The number of returning students has increased by 532 students (+22.6%) from the previous Fall term. JJC has witnessed a 4.6% increase to the number of returning students (+388). The dramatic shift in transfer students may be mostly attributed to census computer programming change. Data definitions: New Freshman – A student not previously enrolled in college; New Pre-College – includes early entry and dual credit; Transfer – a student entering JJC having earned credit at another college/university; Continuing – A student who has enrolled at JJC the previous term (for Fall, the previous term includes spring or summer); Returning – a student who has enrolled at JJC previously but not in the previous term (for Fall term, the previous term includes spring or summer).

Please note small number changes can result in large percent changes for groups with low counts.

Table 6. Headcount by Registration Status Fall Census 2007-2008

Registration Status	Fall 2008	Fall 2009	2008-2009	
			# Change	% Change
New Freshman	2,886	2,642	(244)	-8.5%
New Pre-College	354	405	51	14.4%
Transfer	28	501	473	1689.3%
Continuing	8,471	8,859	388	4.6%
Returning	2,349	2,881	532	22.6%
Total	14,088	15,288	1,200	8.5%

Enrollment by Top 25 Cities

Joliet continues to have the highest proportion of students for Fall 2009 (23.1% of total Fall 2009 census). Table 7 represents the top twenty-five cities for Fall 2008 and Fall 2009 census. The following cities represent 93.2% and 93.8% of the Fall 2008 and 2009 census headcount respectively.

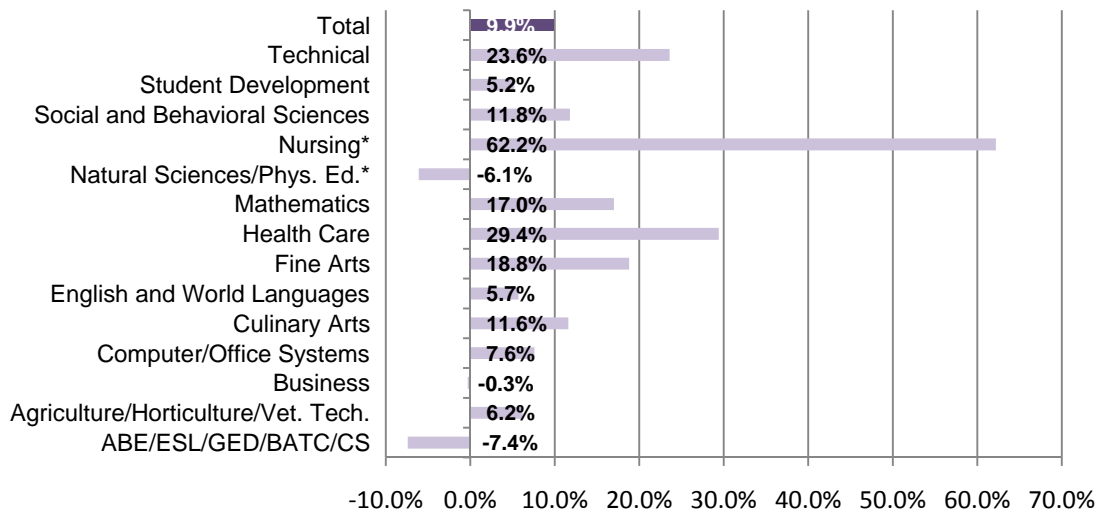
Table 7. Headcount by the Top 25 Cities Fall Census 2008/2009

Fall 2008		Fall 2009	
City	Total	City	Total
Joliet	3,371	Joliet	3,538
Plainfield	1,795	Plainfield	1,974
Bolingbrook	897	Bolingbrook	1,022
Romeoville	851	Romeoville	962
New Lenox	838	New Lenox	930
Lockport	675	Lockport	734
Morris	583	Morris	613
Frankfort	489	Frankfort	526
Mokena	437	Mokena	496
Crest Hill	411	Shorewood	438
Channahon	369	Channahon	427
Shorewood	369	Crest Hill	427
Minooka	347	Minooka	416
Homer Glen	309	Homer Glen	312
Manhattan	245	Manhattan	263
Wilmington	224	Wilmington	242
Coal City	183	Braidwood	169
Braidwood	156	Coal City	156
Lemont	113	Dwight	132
Peotone	95	Lemont	130
Elwood	91	Tinley Park	107
Tinley Park	89	Peotone	104
Gardner	78	Elwood	102
Dwight	70	Chicago	70
Diamond	52	Diamond	56
Total - Top 25 Cities	13,137	Total - Top 25 Cities	14,346
Total Credit Student Headcount	14,088	Total Credit Student Headcount	15,288
% of Total Student Headcount	93.2%	% of Total Student Headcount	93.8%

Departmental Highlights

- Nearly all departments witnessed a credit hour gain for the Fall 2009 census*.
- The JJC Mathematics Department witnessed the highest credit hour gain (+2,908 credit hours, +17.0%).
- The JJC Nursing Department witnessed the highest percent change from the previous Fall census (+62.2% an increase of 2,875 credit hours*).
- The Social and Behavioral Sciences Department witnessed a 2,477 credit hour gain over last fall (+11.8%).
- The JJC Fine Arts Department is up 1,891 credit hours over last fall (+18.8%).
- The JJC Technical Department increased by 23.6% (+1,775 credit hours).

Percent Change from Previous Census by Department



*Please note EMS and FSCI course sections are included in Nursing Department total hours generated for Fall 2009 Census.

- The Social and Behavioral Sciences Department makes up 17% of the Fall 2009 census credit hour count with 23,498, the Mathematics makes up 14% of the overall total hours with 19,998 credits generated, English and World Languages make up 12% of the total with 16,752, followed by the Natural Sciences and Physical Education Department with 15,827 representing 11% of the total generated credits for the Fall 2008 census.

Proportion of Credits Generated by Department Fall 2008 Census

