



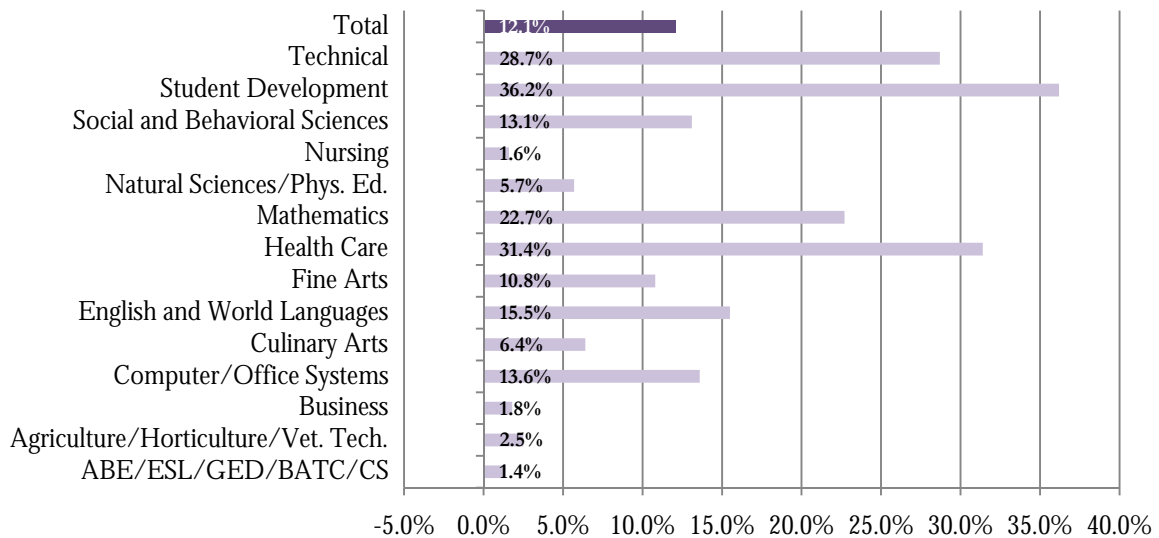
2009 Spring Census Briefing

Departmental Breakdown

Highlights

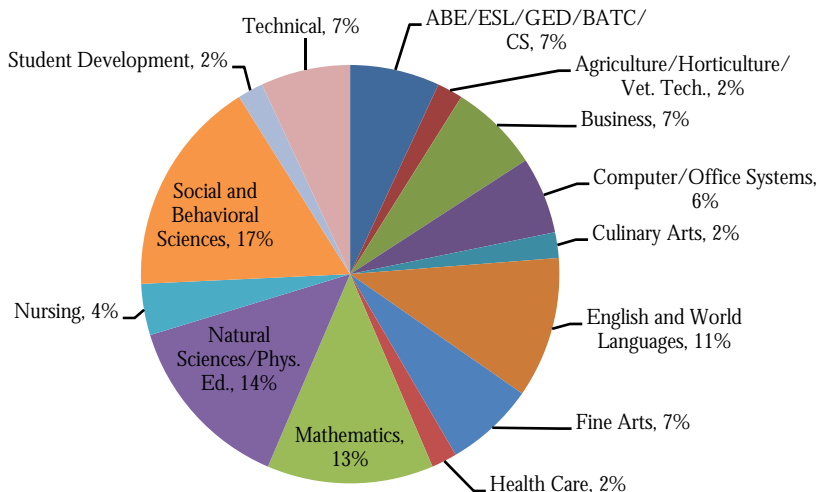
- Spring 2009 credit hours are up 12.1% from last Spring; this is the largest census credit hour count in JJC’s history.
- One Hundred percent (100.0%) of departments witnessed a credit hour gain for the Spring 2009 census.
- Student Development witnessed the highest percent change in credit hours from the previous Spring census (+36.2%).
- The Health Care (HC) Department witnessed a 31.4% increase to credit hours over the prior census.
 - CPR: +28.4% - 109 credit hours at Spring 2008 census, 140 credit hours Spring 2009 census.
 - Nursing Assistant: +31.5% - 1,792 at Spring 2008 census, 2,357 credit hours Spring 2009 census.
- The JJC Technical Department witnessed a 28.7% increase to credit hours from the previous Spring census.
 - Architectural Technology: +366.7% - 24 credit hours at Spring 2008 census, 112 credit hours Spring 2009 census.
 - Criminal Justice: +60.2% - 1,794 at Spring 2008 census, 2,874 credit hours Spring 2009 census.
 - Orthotics and Prosthetics: +49.2% - 199 credit hours at Spring 2008 census, 297 hours Spring 2009 census.

Percent Change from Previous Census by Department



- The Social and Behavioral Sciences Department made up 17% of the Spring 2009 census credit hour count with 21,360, Natural Sciences/Phys. Ed. Department made up 14% of the overall total hours with 17,553, followed by the Mathematics Department with 16,789 credits generated, English and World Languages made up 11% of the total with 14,192 credits generated.

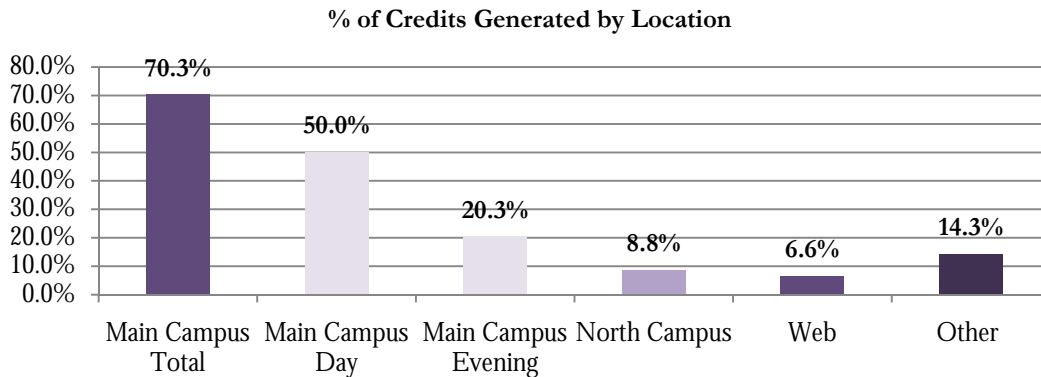
Proportion of Credits Generated by Department Spring 2009 Census



Highlights – continued

- Over seventy percent (70.3%) of credits were generated at the JJC Main Campus, day and evening made up 50.0% and 20.3% respectively, followed by North Campus with 8.8% of the total, and Web courses (online/blended) generating 6.6% of the total credit hours.
- Main Campus-Day credits increased by 4,511 for the Spring 2009 census (+7.5%), Main Campus-Evening increased by 2,927 (+12.6%), and Web-Online/Blended credits increased by 2,731 credits (+47.3%).

Please note small number changes can result in large percent changes for groups with low counts.



Credits Generated by Location Spring Census 2008-2009

Location	2008	2009	% Change 2008-2009
	Credit Hours	Credit Hours	
BATC	0	237	-
Bolingbrook	372	1,143	207.2%
Braidwood	171	252	47.4%
Coal City	135	273	102.2%
City Center Campus	3,151	3,719	18.0%
Dwight Correctional	7	22	214.3%
Frankfort	1,558	1,440	-7.6%
Gardner South Wilmington	0	66	-
Hammond	131	0	-100.0%
Homer	0	60	-
Illinois Youth Center	3	10	233.3%
Kankakee	0	6	-
Lockport	141	339	140.4%
Lemont	128	267	108.6%
Main Campus-Day	60,075	64,585	7.5%
Main Campus-Evening	23,295	26,222	12.6%
Minooka	0	162	-
Grundy County Center	2,034	1,700	-16.4%
New Lenox	685	984	43.6%
Plainfield	0	144	-
North Campus	11,049	11,323	2.5%
Stateville	17	18	6.1%
Telecourse	1,742	1,767	1.4%
Unclassified	4,258	4,175	-1.9%
Weitendorf	0	42	-
Web-Online/Blended	5,768	8,498	47.3%
WILCO	571	0	-100.0%
Wilmington	0	1,773	-
TOTAL	115,288	129,225	12.1%

Duplicated Headcount and Credit Hours Generated by Department

Table 1. Duplicated Headcount by Department Spring Census 2008-2009

Department	2008		2009		2008-2009 % Change
	Head Count	% of Total	Head Count	% of Total	
ABE/ESL/GED/BATC/CS	1,679	5%	1,812	5%	7.9%
Agriculture/Horticulture/Vet. Tech.	1,104	3%	1,096	3%	-0.7%
Business	2,824	8%	2,879	7%	1.9%
Computer/Office Systems	2,248	6%	2,730	7%	21.4%
Culinary Arts	748	2%	805	2%	7.6%
English and World Languages	3,985	11%	4,590	12%	15.2%
Fine Arts	3,106	9%	3,435	9%	10.6%
Health Care	522	1%	637	2%	22.0%
Mathematics	3,332	9%	4,071	10%	22.2%
Natural Sciences/Phys. Ed.	5,064	14%	5,491	14%	8.4%
Nursing	1,484	4%	1,444	4%	-2.7%
Social and Behavioral Sciences	6,294	18%	7,120	18%	13.1%
Student Development	349	1%	496	1%	42.1%
Technical	2,530	7%	3,117	8%	23.2%
TOTAL	35,269	100%	39,723	100%	12.6%

Table 2. Credit Hours Generated by Department Spring Census 2008-2009

Department	2008		2009		2008-2009 % Change
	Credit Hours	% of Total	Credit Hours	% of Total	
ABE/ESL/GED/BATC/CS	9,047	8%	9,171	7%	1.4%
Agriculture/Horticulture/Vet. Tech.	2,975	3%	3,049	2%	2.5%
Business	8,981	8%	9,142	7%	1.8%
Computer/Office Systems	6,880	6%	7,819	6%	13.6%
Culinary Arts	2,581	2%	2,747	2%	6.4%
English and World Languages	12,285	11%	14,192	11%	15.5%
Fine Arts	8,745	8%	9,690	7%	10.8%
Health Care	1,901	2%	2,497	2%	31.4%
Mathematics	13,682	12%	16,789	13%	22.7%
Natural Sciences/Phys. Ed.	16,603	14%	17,553	14%	5.7%
Nursing	4,550	4%	4,622	4%	1.6%
Social and Behavioral Sciences	18,882	16%	21,360	17%	13.1%
Student Development	883	1%	1,203	1%	36.2%
Technical	7,296	6%	9,390	7%	28.7%
TOTAL	115,288	100%	129,225	100%	12.1%

Includes C, H, I, G Credit Types

Duplicated Headcount and Credit Hours Generated – ABE/ESL/GED/BATC/CS

Table 3. Duplicated Headcount Spring Census 2008-2009 – ABE/ESL/GED/BATC/CS

Course Subject	2008		2009		2008-2009 % Change
	Head Count	% of Total	Head Count	% of Total	
ABE/ESL/GED	1,408	84%	1,584	87%	12.5%
BATC/CS	271	16%	228	13%	-15.9%
ABE/ESL/GED/BATC/CS TOTAL	1,679	100%	1,812	100%	7.9%

Table 4. Credit Hours Generated by Department Spring Census 2008-2009 – ABE/ESL/GED/BATC/CS

Course Subject	2008		2009		2008-2009 % Change
	Credit Hours	% of Total	Credit Hours	% of Total	
ABE/ESL/GED	8,448	93%	8,604	94%	1.8%
BATC/CS	599	7%	567	6%	-5.3%
ABE/ESL/GED/BATC/CS TOTAL	9,047	100%	9,171	100%	1.4%

Duplicated Headcount and Credit Hours Generated – Agriculture/Horticulture/Vet. Tech.

Table 5. Duplicated Headcount Spring Census 2008-2009 – Agriculture/Horticulture/Vet. Tech

Course Subject	2008		2009		2008-2009 % Change
	Head Count	% of Total	Head Count	% of Total	
Agriculture	406	37%	377	34%	-7.1%
RMGT-Conservation	-	0%	-	0%	-
Horticulture	265	24%	246	22%	-7.2%
Independent Study	-	-	1	0%	-
Veterinary Technician	433	39%	472	43%	9.0%
Agri./Hort./Vet. Tech. TOTAL	1,104	100%	1,096	100%	-0.7%

Table 6. Credit Hours Generated Spring Census 2008-2009 – Agriculture/Horticulture/Vet. Tech

Course Subject	2008		2009		2008-2009 % Change
	Credit Hours	% of Total	Credit Hours	% of Total	
Agriculture	1,263	42%	1,256	41%	-0.6%
RMGT-Conservation	-	0%	-	0%	-
Horticulture	901	30%	919	30%	2.0%
Independent Study	-	-	3	0%	-
Veterinary Technician	811	27%	871	29%	7.4%
Agri./Hort./Vet. Tech. TOTAL	2,975	100%	3,049	100%	2.5%

Includes C, H, I, G Credit Types

Duplicated Headcount and Credit Hours Generated – BusinessTable 7. *Duplicated Headcount Spring Census 2008-2009 – Business*

Course Subject	Head Count	% of Total	Head Count	% of Total	2008-2009 % Change
Accounting	548	19%	594	21%	8.4%
Advertising	66	2%	64	2%	-3.0%
Business Law	362	13%	348	12%	-3.9%
Business	445	16%	424	15%	-4.7%
Economics	744	26%	734	25%	-1.3%
Finance	29	1%	54	2%	86.2%
Management	430	15%	458	16%	6.5%
Marketing	124	4%	136	5%	9.7%
Real Estate	36	1%	20	1%	-44.4%
Retailing	13	0%	2	0%	-84.6%
Salesmanship	20	1%	26	1%	30.0%
Supply Chain Management	7	0%	19	1%	171.4%
Business TOTAL	2,824	100%	2,879	100%	1.9%

Table 8. *Credit Hours Generated Spring Census 2008-2009 – Business*

Course Subject	Credit Hours	% of Total	Credit Hours	% of Total	2008-2009 % Change
Accounting	2,109	23%	2,252	25%	6.8%
Advertising	198	2%	192	2%	-3.0%
Business Law	1,086	12%	1,044	11%	-3.9%
Business	1,379	15%	1,307	14%	-5.2%
Economics	2,232	25%	2,202	24%	-1.3%
Finance	87	1%	162	2%	86.2%
Management	1,290	14%	1,374	15%	6.5%
Marketing	372	4%	408	4%	9.7%
Real Estate	108	1%	60	1%	-44.4%
Retailing	39	0%	6	0%	-84.6%
Salesmanship	60	1%	78	1%	30.0%
Transportation	21	0%	57	1%	171.4%
Business TOTAL	8,981	100%	9,142	100%	1.8%

Includes C, H, I, G Credit Types

Duplicated Headcount and Credit Hours Generated – Computer/Office Systems

Table 9. Duplicated Headcount Spring Census 2008-2009 - Computer/Office Systems

Course Subject	2008		2009		2008-2009 % Change
	Head Count	% of Total	Head Count	% of Total	
Computer Information Systems	1,502	67%	1,789	66%	19.1%
CISCO Networking	117	5%	94	3%	-19.7%
Game Design	68	3%	86	3%	26.5%
Health Information Management	222	10%	242	9%	9.0%
Independent Study	0	0%	1	0%	-
Office Systems	339	15%	518	19%	52.8%
Computer/Office Systems TOTAL	2,248	100%	2,730	100%	21.4%

Table 10. Credit Hours Generated Spring Census 2008-2009 – Computer/Office Systems

Course Subject	2008		2009		2008-2009 % Change
	Credit Hours	% of Total	Credit Hours	% of Total	
Computer Information Systems	4,570	66%	5,042	64%	10.3%
CISCO Networking	468	7%	376	5%	-19.7%
Game Design	272	4%	344	4%	26.5%
Health Information Management	666	10%	726	9%	9.0%
Independent Study	0	0%	3	0%	-
Office Systems	904	13%	1,328	17%	46.9%
Computer/Office Systems TOTAL	6,880	100%	7,819	100%	13.6%

Duplicated Headcount and Credit Hours Generated – Culinary Arts

Table 11. Duplicated Headcount Spring Census 2008-2009 – Culinary Arts

Course Subject	2008		2009		2008-2009 % Change
	Head Count	% of Total	Head Count	% of Total	
Culinary Arts	524	70%	563	70%	7.4%
Hotel/Restaurant	224	30%	242	30%	8.0%
Culinary Arts TOTAL	748	100%	805	100%	7.6%

Table 12. Credit Hours Generated Spring Census 2008-2009 – Culinary Arts

Course Subject	2008		2009		2008-2009 % Change
	Credit Hours	% of Total	Credit Hours	% of Total	
Culinary Arts	1,829	71%	1,953	71%	6.8%
Hotel/Restaurant	752	29%	794	29%	5.6%
Culinary Arts TOTAL	2,581	100%	2,747	100%	6.4%

Includes C, H, I, G Credit Types

Duplicated Headcount and Credit Hours Generated – English and World LanguagesTable 13. *Duplicated Headcount Spring Census 2008-2009 – English and World Languages*

Course Subject	2008		2009		2008-2009 % Change
	Head Count	% of Total	Head Count	% of Total	
Arabic	5	0%	0	0%	-100.0%
English	3,261	82%	3,927	86%	20.4%
French	14	0%	14	0%	0.0%
German	9	0%	10	0%	11.1%
Independent Study	0	0%	1	0%	-
Italian	14	0%	13	0%	-7.1%
Japanese	13	0%	11	0%	-15.4%
Journalism	68	2%	86	2%	26.5%
Language	1	0%	0	0%	-100.0%
Library	42	1%	28	1%	-33.3%
Philosophy	299	8%	270	6%	-9.7%
Polish	5	0%	0	0%	-100.0%
Russian	2	0%	0	0%	-100.0%
Spanish	252	6%	230	5%	-8.7%
<i>English and World Languages TOTAL</i>	3,985	100%	4,590	100%	15.2%

Table 14. *Credit Hours Generated Spring Census 2008-2009 – English and World Languages*

Course Subject	2008		2009		2008-2009 % Change
	Credit Hours	% of Total	Credit Hours	% of Total	
Arabic	15	0%	0	0%	-100.0%
English	9,924	81%	11,997	85%	20.9%
French	56	0%	56	0%	0.0%
German	27	0%	30	0%	11.1%
Independent Study	0	0%	3	0%	-
Italian	42	0%	39	0%	-7.1%
Japanese	39	0%	33	0%	-15.4%
Journalism	204	2%	258	2%	26.5%
Language	3	0%	0	0%	-100.0%
Library	123	1%	82	1%	-33.3%
Philosophy	897	7%	810	6%	-9.7%
Polish	15	0%	0	0%	-100.0%
Russian	6	0%	0	0%	-100.0%
Spanish	934	8%	884	6%	-5.4%
<i>English and World Languages TOTAL</i>	12,285	100%	14,192	100%	15.5%

Includes C, H, I, G Credit Types

Duplicated Headcount and Credit Hours Generated – Fine Arts

Table 15. Duplicated Headcount Spring Census 2008-2009 – Fine Arts

Course Subject	2008		2009		2008-2009 % Change
	Head Count	% of Total	Head Count	% of Total	
Art	858	28%	849	25%	-1.0%
Fashion Merchandising	64	2%	72	2%	12.5%
Independent Study	0	0%	8	0%	-
Interior Design	191	6%	181	5%	-5.2%
Music	463	15%	532	15%	14.9%
Speech	1,095	35%	1,345	39%	22.8%
Theater	313	10%	327	10%	4.5%
Intellct/Cultural Development	122	4%	121	4%	-0.8%
Fine Arts TOTAL	3,106	100%	3,435	100%	10.6%

Table 16. Credit Hours Generated Spring Census 2008-2009 – Fine Arts

Course Subject	2008		2009		2008-2009 % Change
	Credit Hours	% of Total	Credit Hours	% of Total	
Art	2,574	29%	2,547	26%	-1.0%
Fashion Merchandising	183	2%	205	26%	12.0%
Independent Study	0	0%	22	2%	-
Interior Design	570	7%	533	6%	-6.5%
Music	1,018	12%	1,218	13%	19.6%
Speech	3,285	38%	4,033	42%	22.8%
Theater	935	11%	979	10%	4.7%
Intellct/Cultural Development	180	2%	153	2%	-15.0%
Fine Arts TOTAL	8,745	100%	9,690	126%	10.8%

Duplicated Headcount and Credit Hours Generated – Health Care

Table 17. Duplicated Headcount Spring Census 2008-2009 – Health Care

Course Subject	2008		2009		2008-2009 % Change
	Head Count	% of Total	Head Count	% of Total	
CPR	216	41%	280	44%	29.6%
Nursing Assistant	306	59%	357	56%	16.7%
Health Care TOTAL	522	100%	637	100%	22.0%

Table 18. Credit Hours Generated Spring Census 2008-2009 – Health Care

Course Subject	2008		2009		2008-2009 % Change
	Credit Hours	% of Total	Credit Hours	% of Total	
CPR	109	6%	140	6%	28.4%
Nursing Assistant	1,792	94%	2,357	94%	31.5%
Health Care TOTAL	1,901	100%	2,497	100%	31.4%

Includes C, H, I, G Credit Types

Duplicated Headcount and Credit Hours Generated – Mathematics

Table 19. Duplicated Headcount Spring Census 2008-2009 – Mathematics

Course Subject	2008		2009		2008-2009 % Change
	Head Count	% of Total	Head Count	% of Total	
Mathematics	3,332	100%	4,071	100%	22.2%
Mathematics TOTAL	3,332	100%	4,071	100%	22.2%

Table 20. Credit Hours Generated Spring Census 2008-2009 – Mathematics

Course Subject	2008		2009		2008-2009 % Change
	Credit Hours	% of Total	Credit Hours	% of Total	
Mathematics	13,682	100%	16,789	100%	22.7%
Mathematics TOTAL	13,682	100%	16,789	100%	22.7%

Duplicated Headcount and Credit Hours Generated – Natural Sciences/Physical Education

Table 21. Duplicated Headcount Spring Census 2008-2009 – Natural Sciences/Physical Education

Course Subject	2008		2009		2008-2009 % Change
	Head Count	% of Total	Head Count	% of Total	
Astronomy	274	5%	233	4%	-15.0%
Biology	2,126	42%	2,257	41%	6.2%
Chemistry	449	9%	423	8%	-5.8%
Emergency Medical Services	244	5%	261	5%	7.0%
Fire Science	312	6%	503	9%	61.2%
Geography	283	6%	255	5%	-9.9%
Geology	40	1%	47	1%	17.5%
Health, PE, Recreation	1,198	24%	1,352	25%	12.9%
Physical Science	0	0%	20	0%	-
Physics	138	3%	140	3%	1.4%
Natural Sciences/Phys. Ed. TOTAL	5,064	100%	5,491	100%	8.4%

Table 22. Credit Hours Generated Spring Census 2008-2009 – Natural Sciences/Physical Education

Course Subject	2008		2009		2008-2009 % Change
	Credit Hours	% of Total	Credit Hours	% of Total	
Astronomy	822	5%	699	4%	-15.0%
Biology	8,579	52%	9,030	51%	5.3%
Chemistry	2,157	13%	2,034	12%	-5.7%
Emergency Medical Services	1,067	6%	1,167	7%	9.4%
Fire Science	936	6%	1,509	9%	61.2%
Geography	1,087	7%	926	5%	-14.8%
Geology	160	1%	188	1%	17.5%
Health, PE, Recreation	1,184	7%	1,315	7%	11.1%
Physical Science	0	0%	60	0%	-
Physics	611	4%	625	4%	2.3%
Natural Sciences/Phys. Ed. TOTAL	16,603	100%	17,553	100%	5.7%

Includes C, H, I, G Credit Types

Duplicated Headcount and Credit Hours Generated – NursingTable 23. *Duplicated Headcount Spring Census 2008-2009 – Nursing*

Course Subject	2008		2009		2008-2009 % Change
	Head Count	% of Total	Head Count	% of Total	
Health	281	19%	246	17%	-12.5%
Massage Therapy	58	4%	28	2%	-51.7%
Nursing	1,078	73%	1,084	75%	0.6%
Pharmacy	28	2%	46	3%	64.3%
Radiography	39	3%	40	3%	2.6%
Nursing TOTAL	1,484	100%	1,444	100%	-2.7%

Table 24. *Credit Hours Generated Spring Census 2008-2009 – Nursing*

Course Subject	2008		2009		2008-2009 % Change
	Credit Hours	% of Total	Credit Hours	% of Total	
Health	562	12%	492	11%	-12.5%
Massage Therapy	85	2%	53	1%	-37.6%
Nursing	3,633	80%	3,707	80%	2.0%
Pharmacy	140	3%	230	5%	64.3%
Radiography	130	3%	140	3%	7.7%
Nursing TOTAL	4,550	100%	4,622	100%	1.6%

Duplicated Headcount and Credit Hours Generated – Social and Behavioral SciencesTable 25. *Duplicated Headcount Spring Census 2008-2009 – Social and Behavioral Sciences*

Course Subject	2008		2009		2008-2009 % Change
	Head Count	% of Total	Head Count	% of Total	
Anthropology	130	2%	171	2%	31.5%
Child Development	171	3%	185	3%	8.2%
Education	346	5%	389	5%	12.4%
History	1,237	20%	1,504	21%	21.6%
Political Science	354	6%	404	6%	14.1%
Psychology	2,204	35%	2,407	34%	9.2%
Sociology	1,852	29%	2,060	29%	11.2%
Social and Behavioral Sciences TOTAL	6,294	100%	7,120	100%	13.1%

Table 26. *Credit Hours Generated Spring Census 2008-2009 – Social and Behavioral Sciences*

Course Subject	2008		2009		2008-2009 % Change
	Credit Hours	% of Total	Credit Hours	% of Total	
Anthropology	390	2%	513	2%	31.5%
Child Development	513	3%	555	3%	8.2%
Education	1,038	5%	1,167	5%	12.4%
History	3,711	20%	4,512	21%	21.6%
Political Science	1,062	6%	1,212	6%	14.1%
Psychology	6,612	35%	7,221	34%	9.2%
Sociology	5,556	29%	6,180	29%	11.2%
Social and Behavioral Sciences TOTAL	18,882	100%	21,360	100%	13.1%

Includes C, H, I, G Credit Types

Duplicated Headcount and Credit Hours Generated – Student Development

 Table 27. *Duplicated Headcount Spring Census 2008-2009 – Student Development*

Course Subject	2008		2009		2008-2009 % Change
	Head Count	% of Total	Head Count	% of Total	
General Student Development	349	100%	496	100%	42.1%
<i>Student Development TOTAL</i>	349	100%	496	100%	42.1%

 Table 28. *Credit Hours Generated Spring Census 2008-2009 – Student Development*

Course Subject	2008		2009		2008-2009 % Change
	Credit Hours	% of Total	Credit Hours	% of Total	
General Student Development	883	100%	1,203	100%	36.2%
<i>Student Development TOTAL</i>	883	100%	1,203	100%	36.2%

Includes C, H, I, G Credit Types

Duplicated Headcount and Credit Hours Generated – Technical

Table 29. Duplicated Headcount Spring Census 2008-2009 – Technical

Course Subject	2008		2009		2008-2009 % Change
	Head Count	% of Total	Head Count	% of Total	
Architectural Technology	12	0%	34	1%	183.3%
Automotive Services	314	12%	297	10%	-5.4%
Computer Assisted Design	143	6%	132	4%	-7.7%
(AEC) Construction Technology	225	9%	377	12%	67.6%
Criminal Justice System	598	24%	958	31%	60.2%
Construction Trade Operator	0	0%	164	5%	-
Electronic Automated Syst.	290	11%	335	11%	15.5%
Electronic Engineering Tech.	107	4%	84	3%	-21.5%
Engineering	41	2%	81	3%	97.6%
HVAC	146	6%	151	5%	3.4%
Independent Study	0	0%	1	0%	-
Industrial Maintenance	52	2%	58	2%	11.5%
Manufacturing	123	5%	151	5%	22.8%
Nuclear Reactor Tech.	0	0%	10	0%	-
Orthotics and Prosthetics	58	2%	81	3%	39.7%
Welding	421	17%	203	7%	-51.8%
Technical TOTAL	2,530	100%	3,117	100%	23.2%

Table 30. Credit Hours Generated Spring Census 2008-2009 – Technical

Course Subject	2008		2009		2008-2009 % Change
	Credit Hours	% of Total	Credit Hours	% of Total	
Architectural Technology	24	0%	112	1%	366.7%
Automotive Services	949	13%	923	10%	-2.7%
Computer Assisted Design	417	6%	394	4%	-5.5%
(AEC) Construction Technology	627	9%	837	9%	33.5%
Criminal Justice System	1,794	25%	2,874	31%	60.2%
Construction Trade Operator	0	0%	656	7%	-
Electronic Automated Syst.	1,119	15%	1,317	14%	17.7%
Electronic Engineering Tech.	350	5%	266	3%	-24.0%
Engineering	164	2%	207	2%	26.2%
HVAC	438	6%	453	5%	3.3%
Independent Study	0	0%	1	0%	-
Industrial Maintenance	156	2%	174	2%	11.5%
Manufacturing	421	6%	535	6%	27.1%
Nuclear Reactor Tech.	0	0%	40	0%	-
Orthotics and Prosthetics	199	3%	297	3%	49.2%
Process Technology	0	0%	0	0%	-
Welding	638	9%	305	3%	-52.2%
Technical TOTAL	7,296	100%	9,390	100%	28.7%

Includes C, H, I, G Credit Types