

# JOLIET JUNIOR COLLEGE

**Goal 5. Illinois colleges and universities will hold students to even higher expectations for learning and will be accountable for the quality of academic programs and the assessment of student learning**

## NARRATIVE

### Fiscal Year 2004 Accomplishments

### Fiscal Year 2005 Plans

### Fiscal Year 2005 Goals

\*\*\*The Illinois Community College Board (ICCB) did not require community colleges to complete a narrative for Goal 5 for the 2004 Performance Report\*\*\*

# JOLIET JUNIOR COLLEGE

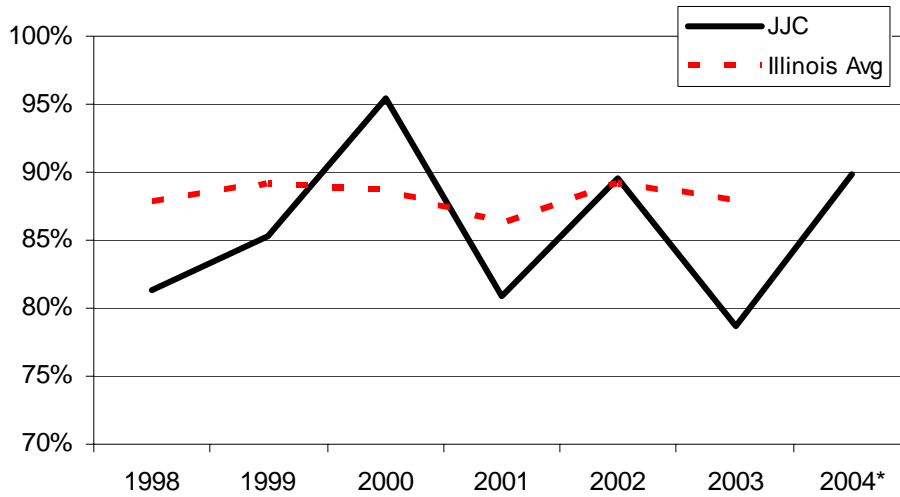
## COMMON INSTITUTIONAL INDICATORS

### Extent to Which Institutional Quality and Effectiveness are Recognized by Graduates through Alumni Surveys

*Satisfaction of Occupational Graduates at Joliet Junior College and All Community Colleges, 1998-2004*

Year	JJC	Illinois Average
1998	81.3%	87.8%
1999	85.3%	89.1%
2000	95.4%	88.7%
2001	80.9%	86.2%
2002	89.5%	89.1%
2003	78.7%	88.0%
2004*	89.9%	*

**Satisfaction of Occupational Graduates at Joliet Junior College and Illinois Community Colleges, 1998-2004**



*\*State aggregate data for 2004 not available as of Performance Report submission date. Measurement includes percent of respondents to the Occupational Follow-up Survey who were satisfied/very satisfied with program components, courses outside the program major and support programs and services.*

*Sources: Illinois Community College Board Occupational Follow-up Survey (FS)*

# JOLIET JUNIOR COLLEGE

## Pass Rates on Professional/Occupational Licensure Examinations Relative to National Averages

*Professional/Occupational Licensure Examination Pass Rates at JJC and Nation, 2001-2003*

Field	Pass Rates (%)					
	2001		2002		2003	
	JJC	U.S.	JJC	U.S.	JJC	U.S.
Nursing	79.5%	84.5%	81.0%	85.5%	74.0%	86.5%
Dental Hygiene	***Does not apply***					
Radiologic Technology*	***Does not apply***					
Emergency Medical Technician (EMT)	99.0%	n/a	100.0%	n/a	99.0%	n/a

*\*Radiologic Technology is a new program at Joliet Junior College. Data for this indicator is unavailable as of 2004. Annual pass rates for EMT on a national basis not available from the Illinois Department of Public Health.*

*Source: Joliet Junior College Nursing and Allied Health Department.*

### INSTITUTIONAL GOAL(S) FOR THIS INDICATOR

- Joliet Junior College is committed to providing a quality education that is affordable to the diverse student population it serves (from the Joliet Junior College *Mission*).
- Keep abreast of the needs of the diverse community that is emerging in the community. Joliet Junior College must incorporate effective learning strategies for minority and underrepresented populations (from the Joliet Junior College *Vision*).
- Continue to place graduates in jobs related to their programs of study (from the *Strategic Plan*).
- Serve underrepresented groups (from the *Strategic Plan*).

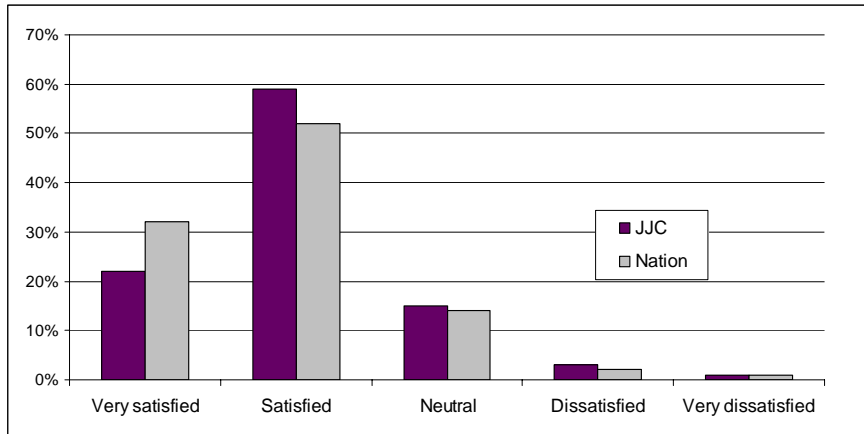
### BRIEF INTERPRETATION OF INSTITUTIONAL PERFORMANCE AND RELATED IMPLICATIONS

Over the past 5 years, Joliet Junior College occupational graduate satisfaction rates have been comparable to state averages, hovering around 85%-90%. A national survey conducted by Joliet Junior College, *Faces of the Future*, shows similar results, with satisfaction rates slightly behind national averages, as shown in the following figure. Additionally, results from the *Faces of the Future Survey* show currently enrolled student satisfaction has increased from 72.3% to 81.4% between Fall 2000 and Fall 2003 (see <http://www.jjc.edu/Admin/IE/facesofthefuture.htm>). Satisfaction rates overall have increased at Joliet Junior College over the past 5 years not only on the *Faces of the Future Survey* but also on an internal *Student Satisfaction Survey*. Another internal survey, the *Graduates Survey*, surveys all Joliet Junior College graduates. Over the past 4 years the percent of graduates indicating they are “very” to “somewhat” satisfied with Joliet Junior College has been 97%, 96%, 98%, and 98% (see <http://www.jjc.edu/Admin/IE/graduates.html>).

# JOLIET JUNIOR COLLEGE

Pass rates on licensure exams have hovered below national averages for the past 3 years in Nursing. Reasons for why should be investigated. Passing rates for EMT students are high while the licensure pass rate for Veterinary Technician graduates in June 2004 was 100%, well above the national average of 80%.

*Satisfaction Levels for Joliet Junior College students and all Students at Community Colleges who completed the Faces of the Future Survey, Fall 2003*



*Source: Joliet Junior College Office of Institutional Effectiveness*

# JOLIET JUNIOR COLLEGE

## MISSION SPECIFIC INDICATORS

**Mission-Specific Indicators Related to Illinois Commitment Goal 5, Illinois colleges and universities will hold students to even higher expectations for learning and will be accountable for the quality of academic programs and the assessment of student learning**

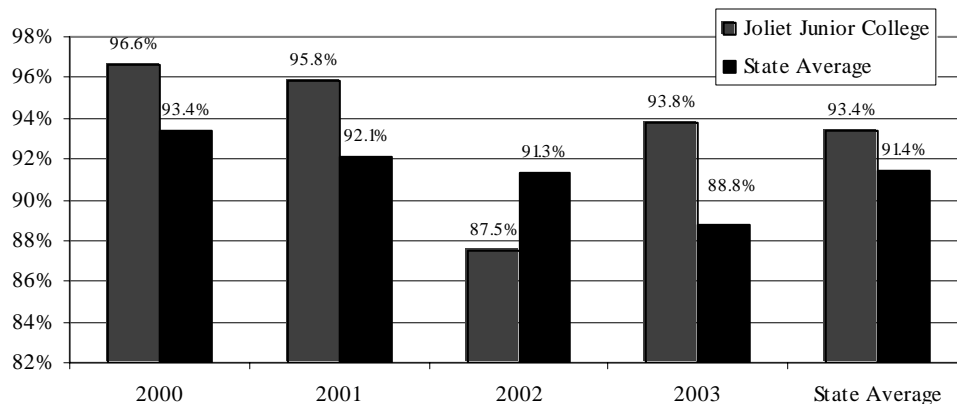
Indicator	Source
State of the art facilities	Strategic Plan
Enabling students to achieve their academic goals	Strategic Plan
Helping students learn	AQIP
Measuring effectiveness	AQIP
Planning continuous improvement	AQIP
JJC prepares students for success in higher education and employment	Mission

### Placement in Employment

Employment placement for Joliet Junior College and community college graduates are collected at two levels by the Illinois Community College Board:

1. *The Occupational Follow-up Survey.* This survey is administered to completers of occupational programs at community colleges.
2. *Triangulated data sources.* The Illinois Community College Board uses the Annual Student Enrollment and Completion (A1) database and triangulates it with other data sources from the Illinois Department of Employment Security, Illinois Common Performance Management System, and U.S. Office of Personnel Management.

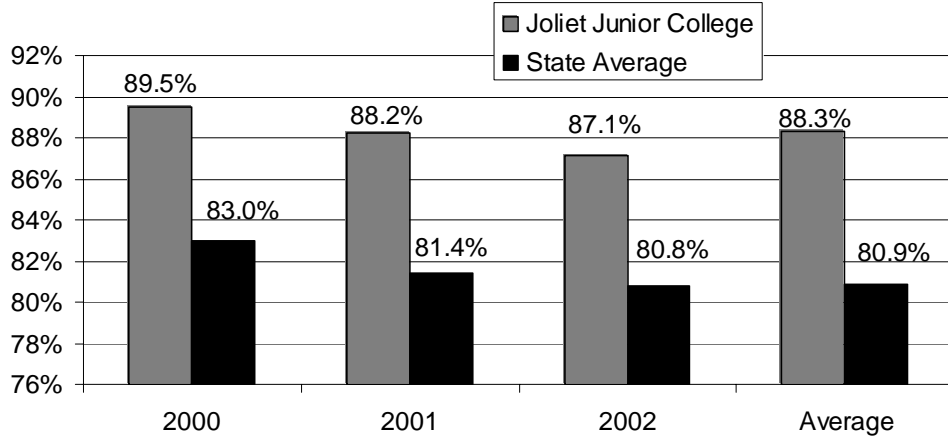
**Percentage of Joliet Junior College and Illinois Community College Occupational Graduates either Employed or Enrolled in College One Year After Completion, 2000-2003**



Source: Illinois Community College Board Occupational Follow-up Survey (FS)

# JOLIET JUNIOR COLLEGE

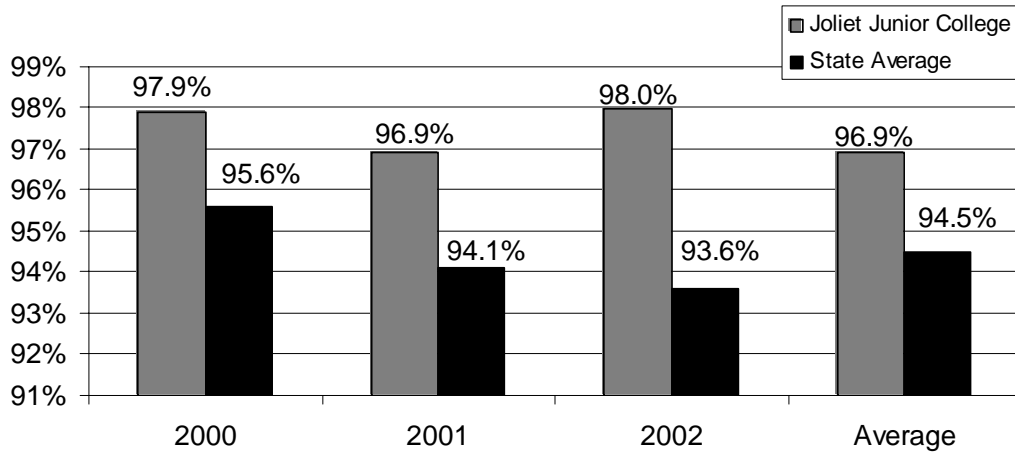
**Percent of Occupational Graduates Employed or Continuing Education One Year After Completion, 2000-2003**



Sources: Annual Student Enrollment and Completion (A1) Survey; Illinois Department of Employment Security; Illinois Common Performance Management System; and U.S. Office of Personnel Management

## Retention in Employment

**Percent of Occupational Graduates Employed or Continuing Education One Year After Completion, 2000-2003**



Sources: Annual Student Enrollment and Completion (A1) Survey; Illinois Department of Employment Security; Illinois Common Performance Management System

# JOLIET JUNIOR COLLEGE

## Summary of Transfer Rates

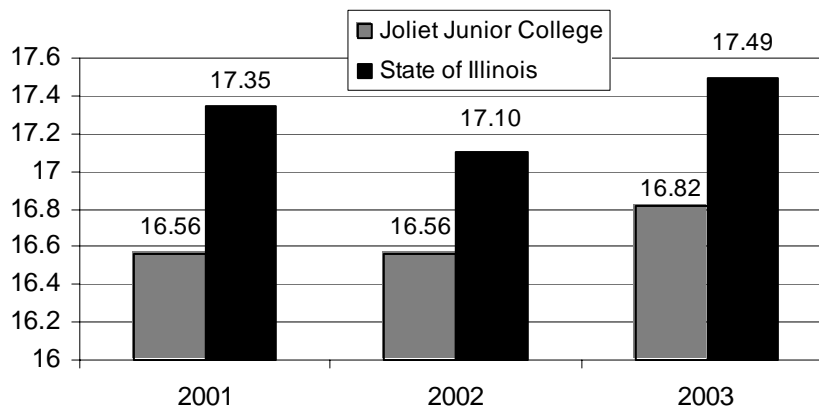
Year	Joliet Junior College			State of Illinois		
	Number <sup>1</sup>	Transfer <sup>2</sup>	Rate	Number	Transfer	Rate
2001	1,281	263	20.5%	31,123	5,874	18.9%
2002	1,245	240	19.3%	31,186	7,066	22.7%
2003	1,307	271	20.7%	30,596	7,564	24.7%
2004	1,285	261	20.3%	29,804	6,815	22.9%

Sources: Illinois Community College Board Annual Enrollment and Completion Survey (A1) and Fall Student Enrollment Survey (E1)

1. Number refers to the number of entrants with no prior college experience who completed 12 or more semester credits four years after initially enrolling. For 2001, then, number refers to the number of Fall 1995 entrants who 12 or more college credits by Spring 1999.
2. Transfer refers to the number of students had transferred four years after enrolling. For 2001, then, transfer refers to the number of Fall 1995 entrants who had completed 12 or more college credits by Spring 1999 and were enrolled in a senior institution by Fall 1999.
3. Transfer rate is transfer/number.

## Average Class Size

Average Class Size, Joliet Junior College and Illinois Community Colleges, Fiscal Years 2001-2003



Source: Illinois Community College Board Course Enrollment and Resources Surveys (S3, S6)

# JOLIET JUNIOR COLLEGE

## Faculty Preparation

*Number and Percent of Full-time Baccalaureate/Transfer Faculty with a Master's Degree or Higher at Joliet Junior College, Fiscal Years 2001-2003\**

<b>Year</b>	<b>Number</b>	<b>%</b>
2001	62	75.6%
2002	87	100.0%
2003	79	98.8%

*\*Includes faculty whose primary responsibility was teaching in Baccalaureate/Transfer (PCS 1.1) only; does not include Occupational/Technical, Community, Vocational, Adult Basic, or English as a Second Language instructors.*

*Source: Illinois Community College Board Faculty, Staff, and Salary Survey (C1)*

## Number of General Education and Major Specific Courses Included in the Illinois Articulation Initiative (IAI)

*Number of General Education and Major Specific Courses Included in the Illinois Articulation Initiative (IAI) at Joliet Junior College, Fiscal Years 2001-2003*

<b>Year</b>	<b>General Education</b>	<b>Major Specific</b>
2002	83	166
2003	82	168
2004	83	170
Three-year Change	0.0%	9.7%

*Source: Illinois Articulation Initiative*

# JOLIET JUNIOR COLLEGE

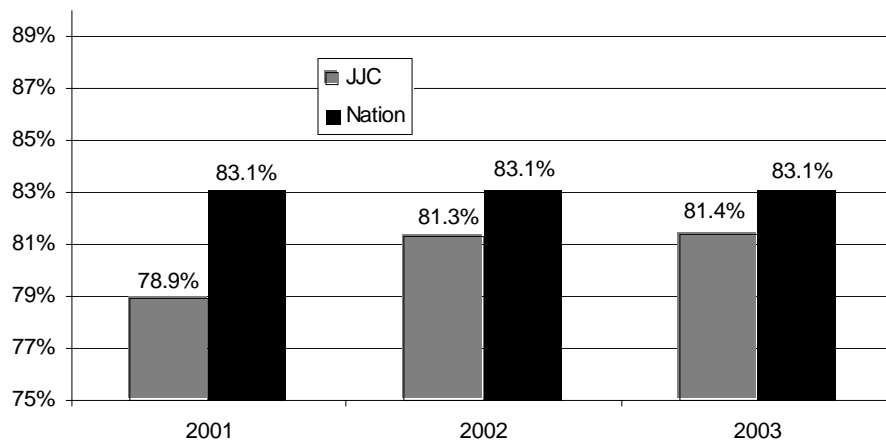
## BRIEF INTERPRETATION OF INSTITUTIONAL PERFORMANCE AND RELATED IMPLICATIONS

### *Satisfaction with College*

Compared to other community colleges in Illinois, Joliet Junior College certificate and degree recipients report comparable, but somewhat lower levels, of satisfaction with the program they completed. For instance, over the past 3 years, 84.7% of Joliet Junior College completers reported being satisfied or very satisfied with their academic program, compared to 88.5% for all Illinois community college completers.

Satisfaction rates for Joliet Junior College completers were higher than for currently enrolled students, as indicated by the following graph.

**Overall Satisfaction with College at Joliet Junior College and National Community Colleges, Fall 2001-2003**



*Source: Faces of the Future Survey. Includes respondents who indicated being satisfied or very satisfied with their institution.*

In both the Occupational Follow-up and Faces of the Future Surveys, however, overall satisfaction rates were slightly below state and national averages.

### *Occupational Placement and Retention*

Joliet Junior College graduates report higher levels of occupational placement and retention. This should not be surprising as, according to the Joliet Junior College Graduate Survey, 97% of graduates state they attained their educational goals by attending Joliet Junior College. The same survey found that 83% of occupational program graduates were employed with over half attaining new employment as a result of their attendance at Joliet Junior College. While 91% of occupational degree recipients felt their degree was relevant to current employment, only 64% of certificate recipients felt the same way.

# JOLIET JUNIOR COLLEGE

## *Transfer Rates*

Over the last 3 years, Joliet Junior College has lagged behind the state average for transfer rates to other postsecondary institutions. According to the Joliet Junior College Graduate Survey, nearly one-third of associate of arts degree recipients had transferred to another college or university; 94% stated Joliet Junior College prepared them adequately to transfer.