

# JOLIET JUNIOR COLLEGE

## **Goal 4. Illinois will increase the number and diversity of citizens completing training and education programs**

### NARRATIVE

#### **Fiscal Year 2004 Accomplishments**

#### **Fiscal Year 2005 Plans**

#### **Fiscal Year 2005 Goals**

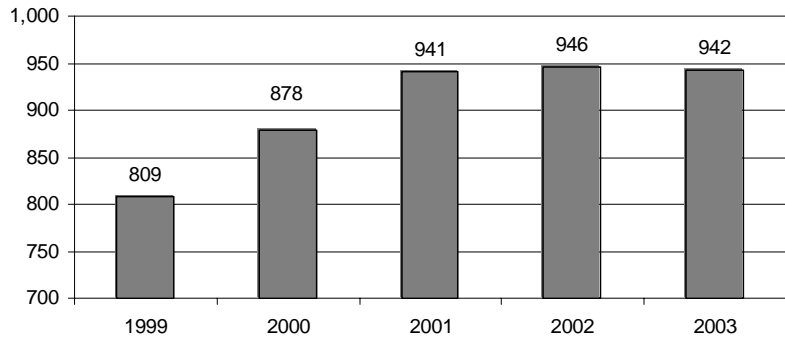
\*\*\*The Illinois Community College Board (ICCB) did not require community colleges to complete a narrative for Goal 4 for the 2004 Performance Report\*\*\*

# JOLIET JUNIOR COLLEGE

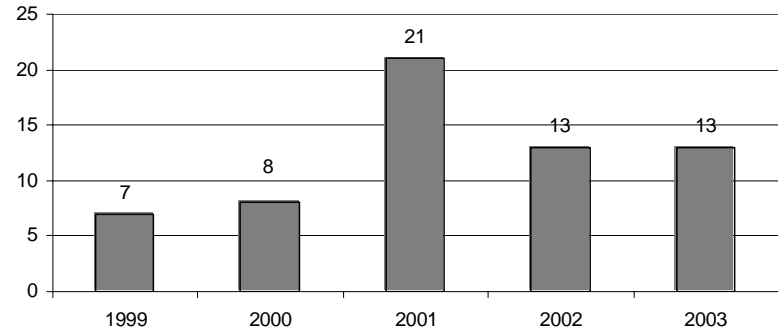
## COMMON INSTITUTIONAL INDICATORS

### Completions by Race, Gender, and Disability Status

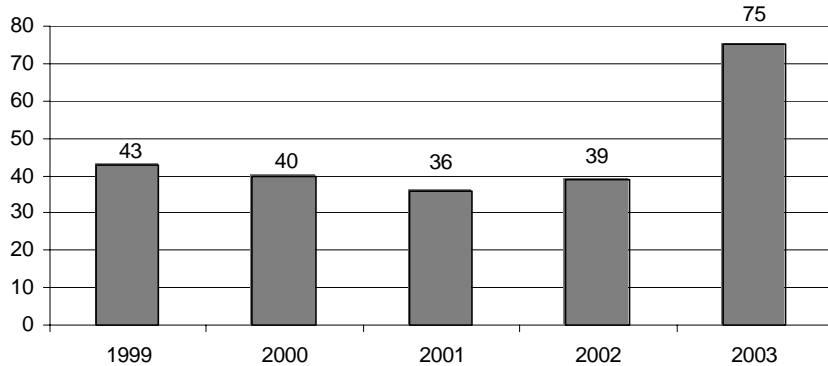
**Number of Completers at Joliet Junior College, All Students, 1999-2003**



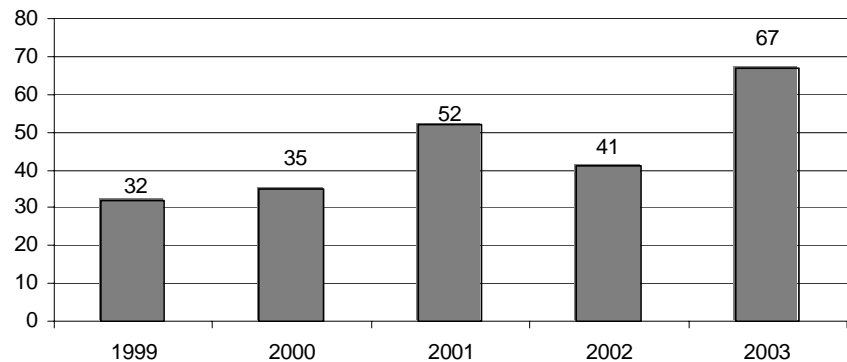
**Number of Completers at Joliet Junior College, Asian Students, 1999-2003**



**Number of Completers at Joliet Junior College, African-American Students, 1999-2003**

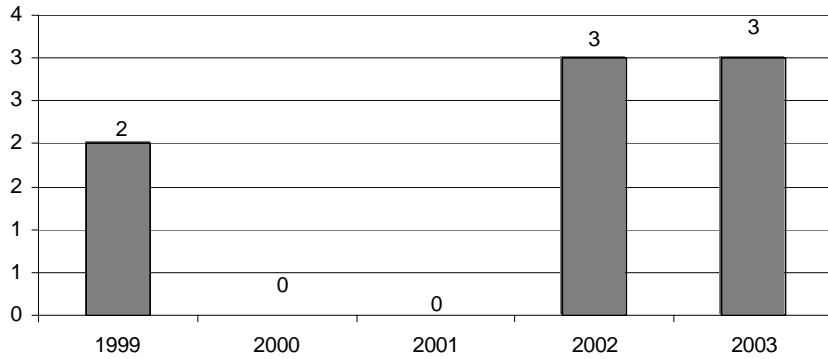


**Number of Completers at Joliet Junior College, Latino Students, 1999-2003**

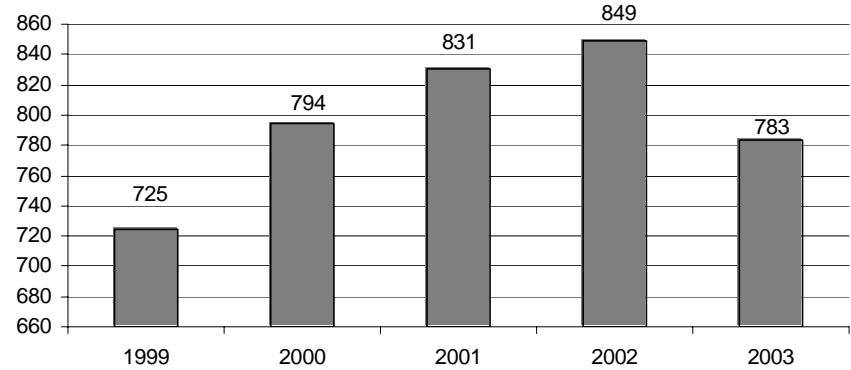


# JOLIET JUNIOR COLLEGE

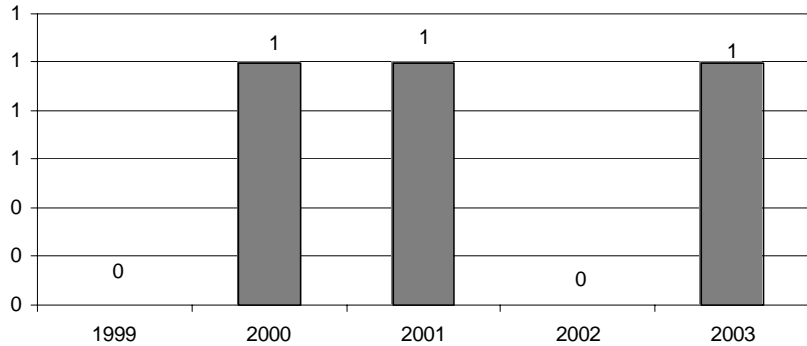
**Number of Completers at Joliet Junior College, Native-American Students, 1999-2003**



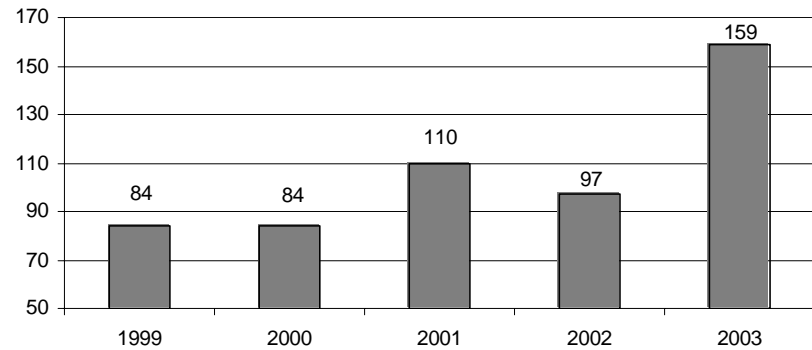
**Number of Completers at Joliet Junior College, White Students, 1999-2003**



**Number of Completers at Joliet Junior College, Alien Students, 1999-2003**

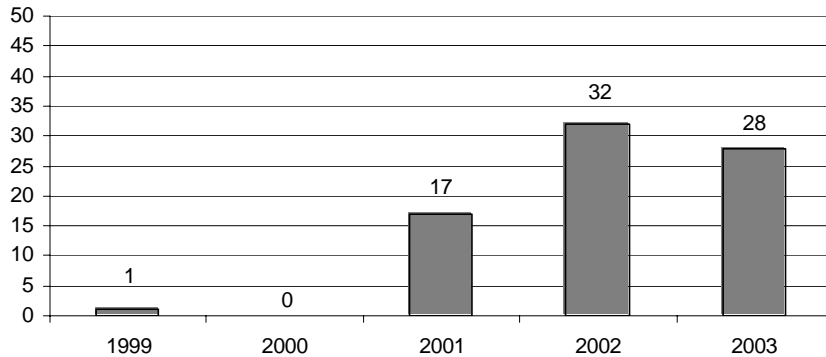


**Number of Completers at Joliet Junior College, Minority Students, 1999-2003**

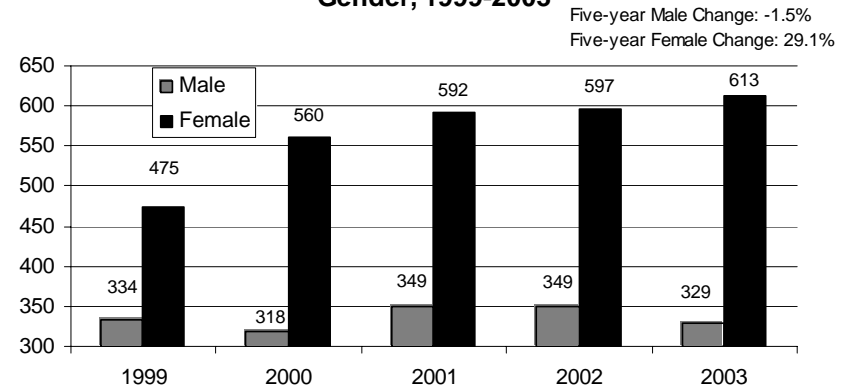


# JOLIET JUNIOR COLLEGE

**Number of Completers at Joliet Junior College, Students with Disabilities, 1999-2003**



**Number of Completers at Joliet Junior College, by Gender, 1999-2003**



Source: Illinois Community College Board Annual Enrollment and Completion Survey (A1)

## INSTITUTIONAL GOAL(S) FOR THIS INDICATOR

1. Continue to place graduates in jobs related to their programs of study (from the *Strategic Plan*)
2. Serve underrepresented groups (from the *Strategic Plan*)

## BRIEF INTERPRETATION OF INSTITUTIONAL PERFORMANCE AND RELATED IMPLICATIONS

Mirroring national trends, the data show that more females than males are graduating from Joliet Junior College. After rather flat growth between 1999 and 2002, the number of minority completers at Joliet Junior College increased significantly in 2003. In fact, the number of African-American completers was nearly double the annual number for the past four years. After growing every year between 1999 and 2002, the number of White completers fell for the first time. These numbers could be indicative of two things: 1) the increasing number of minority students at Joliet Junior College and 2) institutional interventions. While still behind state and community college averages, Joliet Junior College has made strides in increasing the number and diversity of citizens completing training and education programs. Additionally, Joliet Junior College has made it an explicit institutional goal and, after placing the ENLACE, Minority Student Affairs, and Multicultural Student Transfer Center on “hard” money, has shown an institutional commitment to improving the diversity of students completing their program of study.

# JOLIET JUNIOR COLLEGE

## MISSION SPECIFIC INDICATORS

**Mission-Specific Indicators Related to Illinois Commitment Goal 4, Illinois will increase the number and diversity of citizens completing training and education programs**

Indicator	Source
Joliet Junior College is committed to providing a quality education that is affordable and accessible to the diverse student population it serves.	Mission
Serving underrepresented groups	Strategic Plan
Address the needs of the shifting demographic populace emerging in District 525	Institutional Goal (Strategic Plan)
Retain and recruit exceptional and diverse faculty	Institutional Goal (Strategic Plan)
Understanding students' and other stakeholders' needs	AQIP

### Enrollment by Race, Gender, Disability Status, and Other Characteristics

*Unduplicated Head Count Enrollment by Race, Fiscal Years 1999-2003*

Race	1999		2000		2001		2002		2003		1999-2003 Change	
	Number	% of total	Number	% of total	Number	% of total	Number	% of total	Number	% of total	Number	%
Asian	282	1.6%	336	1.8%	365	1.8%	385	1.9%	379	1.7%	97	34.4%
African-American	1,395	7.9%	1,487	8.0%	1,846	9.3%	2,097	10.3%	2,646	11.7%	1,251	89.7%
Latino	1,592	9.0%	2,076	11.1%	2,591	13.1%	2,760	13.5%	3,333	14.8%	1,741	109.4%
Native-American	49	0.3%	39	0.2%	43	0.2%	41	0.2%	46	0.2%	-3	-6.1%
White	14,321	81.1%	14,669	78.5%	14,934	75.3%	15,055	73.9%	16,109	71.4%	1,788	12.5%
Alien	22	0.1%	83	0.4%	47	0.2%	47	0.2%	45	0.2%	23	104.5%
<b>Total</b>	<b>17,661</b>	<b>100.0%</b>	<b>18,690</b>	<b>100.0%</b>	<b>19,826</b>	<b>100.0%</b>	<b>20,385</b>	<b>100.0%</b>	<b>22,558</b>	<b>100.0%</b>	<b>4,897</b>	<b>27.7%</b>

Source: Illinois Community College Board Annual Enrollment and Completion Survey (A1)

# JOLIET JUNIOR COLLEGE

## *Unduplicated Head Count Enrollment by Minority Status, Fiscal Years 1999-2003*

Race	1999		2000		2001		2002		2003		1999-2003 Change	
	Number	% of total	Number	% of total	Number	% of total	Number	% of total	Number	% of total	Number	%
Minority	3,340	18.9%	4,021	21.5%	4,892	24.7%	5,330	26.1%	6,449	28.6%	3,109	93.1%
White	14,321	81.1%	14,669	78.5%	14,934	75.3%	15,055	73.9%	16,109	71.4%	1,788	12.5%
Total	17,661	100.0%	18,690	100.0%	19,826	100.0%	20,385	100.0%	22,558	100.0%	4,897	27.7%

Source: Illinois Community College Board Annual Enrollment and Completion Survey (A1)

## *Unduplicated Head Count Enrollment by Gender, Fiscal Years 1999-2003*

Gender	1999		2000		2001		2002		2003		1999-2003 Change	
	Number	% of total	Number	% of total	Number	% of total	Number	% of total	Number	% of total	Number	%
Male	7,763	44.0%	8,155	43.6%	8,648	43.6%	8,817	43.3%	9,607	42.6%	1,844	23.8%
Female	9,898	56.0%	10,535	56.4%	11,178	56.4%	11,568	56.7%	12,951	57.4%	3,053	30.8%
Total	17,661	100.0%	18,690	100.0%	19,826	100.0%	20,385	100.0%	22,558	100.0%	4,897	27.7%

Source: Illinois Community College Board Annual Enrollment and Completion Survey (A1)

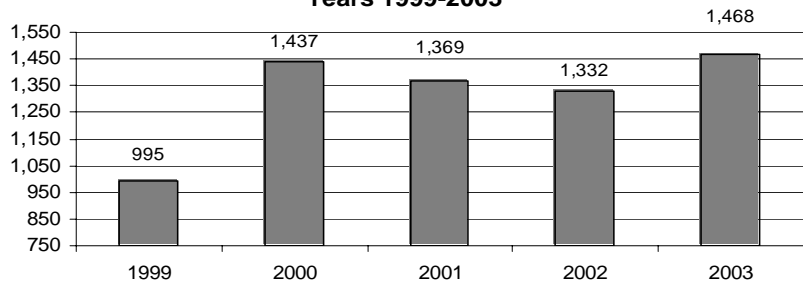
## *Unduplicated Head Count Enrollment by Disability Status, Fiscal Years 1999-2003*

Status	1999		2000		2001		2002		2003		1999-2003 Change	
	Number	% of total	Number	% of total	Number	% of total	Number	% of total	Number	% of total	Number	%
Disability	41	0.2%	17	0.1%	378	1.9%	370	1.8%	404	1.8%	363	885.4%

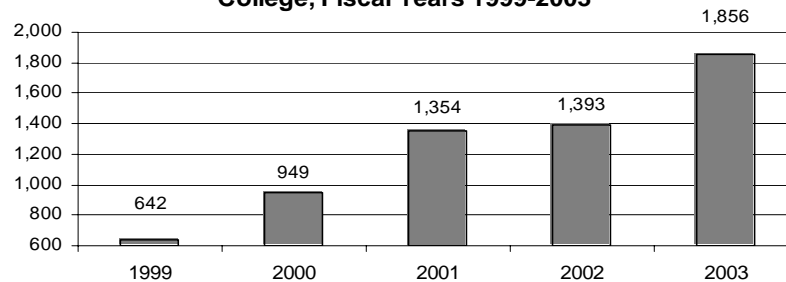
Source: Illinois Community College Board Annual Enrollment and Completion Survey (A1)

# JOLIET JUNIOR COLLEGE

**Number of Students Served through Adult Basic & Secondary Education at Joliet Junior College, Fiscal Years 1999-2003**

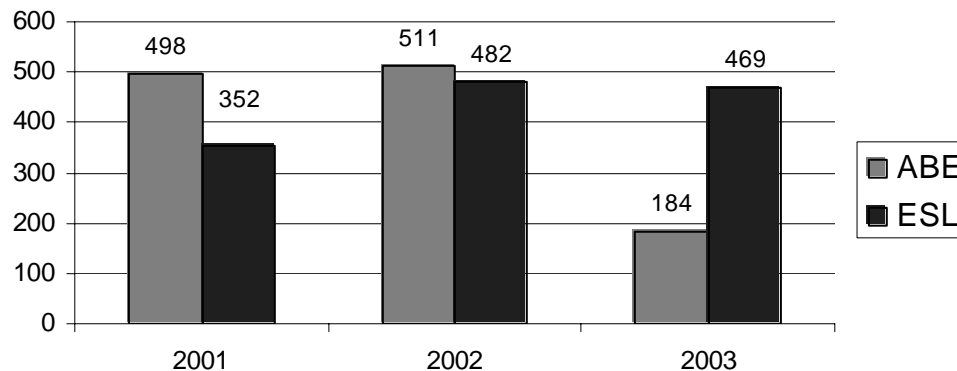


**Number of Students Served through English as a Second Language Coursework at Joliet Junior College, Fiscal Years 1999-2003**



Source: Illinois Community College Board Annual Enrollment and Completion Survey (A1)

**Number of Level Advancements in Adult Education and English as a Second Language Courses at Joliet Junior College, 2001-2003**



Source: Illinois Community College Board Annual Enrollment and Completion Survey (A1)

# JOLIET JUNIOR COLLEGE

## *Unduplicated Head Count Enrollment in Remedial Courses, Fiscal Years 2001-2003*

Year	Joliet Junior College		State of Illinois	
	Number	% of enrollment	Number	% of enrollment
2001	3,512	17.7%	91,152	13.7%
2002	3,661	18.0%	94,637	14.0%
2003	4,104	18.2%	100,627	14.5%
Three-year Average	3,759	--	95,472	--
Three-year Change	16.9%	--	10.4%	--

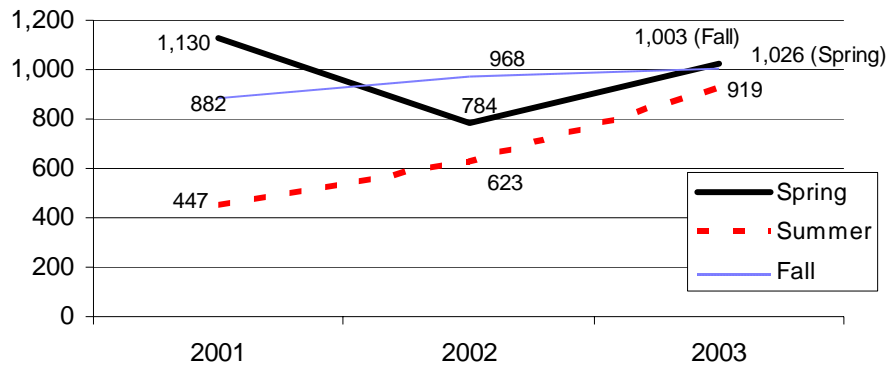
Source: Illinois Community College Board Annual Enrollment and Completion Survey (A1)

## *Unduplicated Head Count Enrollment in Remedial Courses, Fiscal Years 2001-2003*

Year	Earned	Attempted
2001	16,239	23,707
2002	15,933	24,312
2003	17,761	27,252
Three-year Average	16,644	25,090
Three-year Change	9.4%	15.0%

Source: Illinois Community College Board Annual Enrollment and Completion Survey (A1)

### Head Count Enrollment in Distance Learning Courses by Semester, 2001-2003



Source: Illinois Virtual Campus

Note: Joliet Junior College offered 0 Distance Education Courses in fiscal year 2001, 101 in fiscal year 2002, and 164 in fiscal year 2003.

# JOLIET JUNIOR COLLEGE

## Faculty and Administration

### *Full-time Faculty by Race, Fiscal Years 2001-2004*

Race	2001		2002		2003		2004		2001-2004 Change	
	Number	% of total	Number	% of total	Number	% of total	Number	% of total	Number	%
Asian	5	3.3%	6	3.7%	6	3.6%	7	4.0%	2	40.0%
African-American	3	2.0%	3	1.9%	5	3.0%	5	2.9%	2	66.7%
Latino	4	2.6%	4	2.5%	4	2.4%	4	2.3%	0	0.0%
Native-American	0	0.0%	0	0.0%	0	0.0%	0	0.0%	0	0.0%
White	141	92.2%	149	92.0%	153	91.1%	157	90.8%	16	11.3%
Alien	0	0.0%	0	0.0%	0	0.0%	0	0.0%	0	0.0%
<b>Total</b>	<b>153</b>	<b>100.0%</b>	<b>162</b>	<b>100.0%</b>	<b>168</b>	<b>100.0%</b>	<b>173</b>	<b>100.0%</b>	<b>20</b>	<b>13.1%</b>

Source: Illinois Community College Board Faculty, Staff, and Salary Survey (C1)

### *Full-time Faculty by Minority Status, Fiscal Years 2001-2004*

Race	2001		2002		2003		2004		2001-2004 Change	
	Number	% of total	Number	% of total	Number	% of total	Number	% of total	Number	%
Minority	12	7.8%	13	8.0%	15	8.9%	16	9.2%	4	33.3%
White	141	92.2%	149	92.0%	153	91.1%	157	90.8%	16	11.3%
<b>Total</b>	<b>153</b>	<b>100.0%</b>	<b>162</b>	<b>100.0%</b>	<b>168</b>	<b>100.0%</b>	<b>173</b>	<b>100.0%</b>	<b>20</b>	<b>13.1%</b>

Source: Illinois Community College Board Faculty, Staff, and Salary Survey (C1)

# JOLIET JUNIOR COLLEGE

## *Full-time Administrators by Race, Fiscal Years 2001-2004*

Race	2001		2002		2003		2004		2001-2004 Change	
	Number	% of total	Number	% of total	Number	% of total	Number	% of total	Number	%
Asian	1	1.6%	1	1.3%	1	1.5%	1	1.5%	0	0.0%
African-American	13	20.6%	17	22.7%	12	17.9%	12	18.2%	-1	-7.7%
Latino	0	0.0%	3	4.0%	1	1.5%	1	1.5%	1	100.0%
Native-American	0	0.0%	0	0.0%	0	0.0%	0	0.0%	0	0.0%
White	49	77.8%	54	72.0%	53	79.1%	52	78.8%	3	6.1%
Alien	0	0.0%	0	0.0%	0	0.0%	0	0.0%	0	0.0%
<b>Total</b>	<b>63</b>	<b>100.0%</b>	<b>75</b>	<b>100.0%</b>	<b>67</b>	<b>100.0%</b>	<b>66</b>	<b>100.0%</b>	<b>3</b>	<b>4.8%</b>

Source: Illinois Community College Board Faculty, Staff, and Salary Survey (C1)

## *Full-time Administrators by Minority Status, Fiscal Years 2001-2004*

Race	2001		2002		2003		2004		2001-2004 Change	
	Number	% of total	Number	% of total	Number	% of total	Number	% of total	Number	%
Minority	14	22.2%	21	28.0%	14	20.9%	14	21.2%	0	0.0%
White	49	77.8%	54	72.0%	53	79.1%	52	78.8%	3	6.1%
<b>Total</b>	<b>63</b>	<b>100.0%</b>	<b>75</b>	<b>100.0%</b>	<b>67</b>	<b>100.0%</b>	<b>66</b>	<b>100.0%</b>	<b>3</b>	<b>4.8%</b>

Source: Illinois Community College Board Faculty, Staff, and Salary Survey (C1)

# JOLIET JUNIOR COLLEGE

*Percentage of Full-time Combined Minority Professionals Other than Faculty or Administrators, Fiscal Years 2001-2004*

Race	2001		2002		2003		2004		2001-2004 Change	
	Number	% of total	Number	% of total	Number	% of total	Number	% of total	Number	%
Asian	0	0.0%	0	0.0%	0	0.0%	0	0.0%	0	0.0%
African-American	1	3.6%	1	2.9%	1	3.4%	1	3.2%	0	0.0%
Latino	1	3.6%	1	2.9%	0	0.0%	0	0.0%	-1	-100.0%
Native-American	0	0.0%	0	0.0%	0	0.0%	0	0.0%	0	0.0%
White	26	92.9%	33	94.3%	28	96.6%	30	96.8%	4	15.4%
Alien	0	0.0%	0	0.0%	0	0.0%	0	0.0%	0	0.0%
<b>Total</b>	<b>28</b>	<b>100.0%</b>	<b>35</b>	<b>100.0%</b>	<b>29</b>	<b>100.0%</b>	<b>31</b>	<b>100.0%</b>	<b>3</b>	<b>10.7%</b>

*Source: Illinois Community College Board Faculty, Staff, and Salary Survey (C1)*

# JOLIET JUNIOR COLLEGE

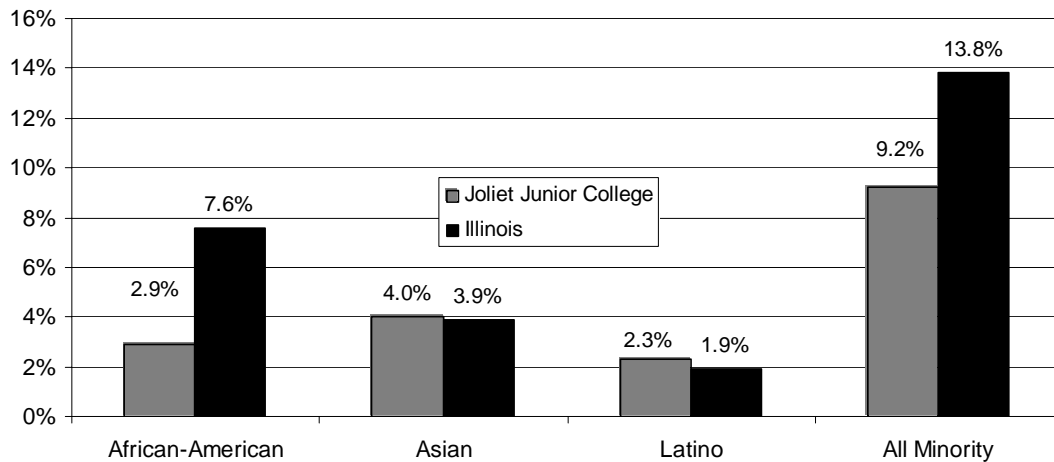
## BRIEF INTERPRETATION OF INSTITUTIONAL PERFORMANCE AND RELATED IMPLICATIONS

While the number of students completing degree and certificate programs at Joliet Junior College has slightly risen or remained stable over the past three years, completion rates have not kept pace with enrollment. This could be the result of more students electing not to graduate or deciding to leave without completing a degree program. On the other hand, it may be a temporary lag in the data, with increases in the number of completers that could result from recent substantial rises in enrollment following close behind.

Of particular note is the increase in the number of students from minority populations who are completing programs, with the number of minority students completing programs rising 90% over the past five years.

Joliet Junior College still has a long way to go towards meeting its goal of increasing the diversity of faculty, staff, and administration. While more than one in four Joliet Junior College students are part of a minority population, less than one in ten faculty come from a minority population.

**Full-time Faculty at Joliet Junior College and the State of Illinois  
Community Colleges as a Percentage of All Full-time Faculty, Fiscal Year  
2004**



Source: Illinois Community College Board Faculty, Staff, and Salary Survey (C1)