

JOLIET
Junior *College*

FACT BOOK
2005

PREPARED BY INSTITUTIONAL EFFECTIVENESS

Table of Contents

	Page
Introduction.....	1
AT-A-GLANCE	12
Fall 2004 Credit Students.....	13
Spring 2005 Credit Students.....	14
Fiscal Year 2004 Finances.....	15
Fiscal Year 2004 Financial Aid.....	16
Employment Projections by Industry in JJC District 2000-2010.....	17
PART I: APPLICANTS	18
Fall 2004 Applicants by High School.....	19
Fall 2004 JJC Enrollment by High School-New Students	
2004 High School Graduates.....	20
Yield Analysis: Fall 2002, Fall 2003, Fall 2004	
High School Graduates and Corresponding JJC Enrollees.....	21
ACT Scores received for Fall 2004-Spring 2005 Applicants.....	23
Fall 2004 Applicants by Top 25 Cities.....	24
 PART II: STUDENT ENROLLMENT	 25
Head Count/Credit Hours Full-Time & Part-Time.....	26
Average Age.....	27
Head Count by Degree Status.....	28
Head Count by Registration Status.....	29
Head Count/Credit Hours by Ethnicity.....	30
Head Count/Credit Hours by Gender.....	31
Course Enrollments by Top 50 Cities.....	32
Credit Hours by Academic Department.....	33
Where Students Transfer From.....	34
 PART III: AVERAGE SECTION SIZE	 35
10 th Day Average Section Size by Department	
Fall 2003-2004.....	36

Table of Contents (continued)

	Page
Spring 2004-2005.....	40
10 th Day Average Section Size by Credit Type	
Fall 2003-Fall 2004, Spring 2004-Spring 2005	44
10 th Day Average Section Size by Location	
Fall 2003-Fall 2004.....	45
Spring 2004-Spring 2005	46
PART IV: RETENTION	47
Ethnicity & Gender	
Table 1-One Semester: Fall 2004/Spring 2005 Retention Rates	48
Table 2- One Semester: Fall 2003/Spring 2004 Retention Rates	48
Table 3- One Year: Fall 2003/Fall 2004 Retention Rates.....	48
Table 4- One Year: Fall 2002/Fall 2003 Retention Rates.....	48
Last Day Credit Hours/Tenth Day Credit Hours	49
PART V: DEGREES CONFERRED	53
Head Count by Ethnicity & Gender.....	54
Head Count by Degree Type.....	55
Head Count by Program & Degree.....	56
PART VI: FACULTY	62
Average Faculty Load by Department	
Fall 2004	63
Spring 2005	63
Head Count by Department & Full-time/Part-time	
Fall 2004	64
Spring 2005	64
Head Count by Ethnicity & Gender	
Fall 2004	65
Spring 2005	65

Table of Contents (continued)

	Page
PART VII: NON-CREDIT PROGRAMS	66
Head Count by Ethnicity & Gender.....	67
Head Count by Top 25 Cities.....	68
Head Count by Location	69
Head Count by Department	70
Age by Gender	71
PART VIII: COST INFORMATION	72
Fiscal Year 2003/2004 Unit Cost.....	73
Fiscal Year 2004 Unit Cost by Peer Group	75

Introduction

PURPOSE OF THE FACT BOOK

The Office of Institutional Effectiveness maintains and develops data resources at the college to support strategic planning and policy-making processes as a component of its mission. The efforts of the office are aimed at improving the quality of education and services at Joliet Junior College. The fact book is an annual compilation to help assist with these efforts by providing the College with current and trend data.

For comments and additional information regarding the fact book please contact the Joliet Junior College - Office of Institutional Effectiveness, 1215 Houbolt Road, Joliet, Illinois 60431. Phone: 815-280-2629, Fax: 815-729-4256, E-mail: effectiveness@jjc.edu

The fact book can also be viewed online at www.jjc.edu/admin/ie

ABOUT THE COLLEGE

Founded in 1901, Joliet Junior College is the first public community college in the nation. With an initial enrollment of 6 students, Joliet Junior College today annually enrolls over 20,000 students. The college offers pre-baccalaureate programs for students planning to transfer to a four-year university, occupational education leading directly to employment, adult education and literacy programs, work force and workplace development services, and support services to help students succeed.

Joliet Junior College is accredited through the Higher Learning Commission, a part of the North Central Association for Schools and Colleges. Colleges and universities can participate in the traditional accreditation process through the Higher Learning Commission or through the Academic Quality Improvement Program (AQIP). As a member of AQIP, Joliet Junior College is committed to the continual improvement of its academic programs and support services.

JJC is one of only 19 colleges and universities nationwide to receive a National Medallion Award for student development.

MISSION

Joliet Junior College is committed to providing a quality education that is affordable and accessible to the diverse student population it serves. Through a rich variety of educational programs and support services, JJC prepares its students for success in higher education and employment. As part of this College's commitment to lifelong learning and services to its community, it also provides a broad spectrum of transitional, extension, adult, continuing and workforce education.

ACCREDITATION OF INDIVIDUAL DEGREE PROGRAMS

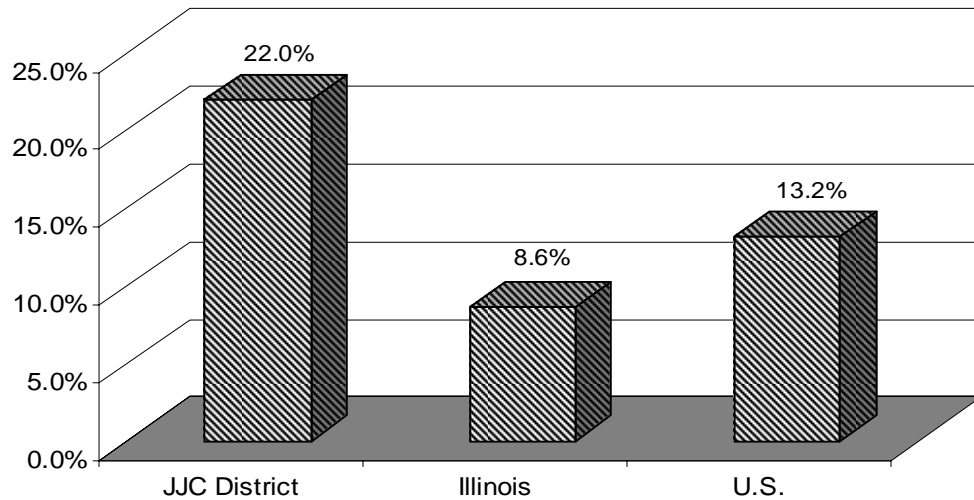
Joliet Junior College is accredited by the North Central Association of Colleges and Schools. JJC is approved by the American Culinary Federation, Association of Business Schools and Programs, the National Automotive Technicians Education Foundation, the National League of Nursing, the State Approving Agency for Veteran's Education, and the National Association of Schools of Music. The College also is an approved Nursing Home Administrator Continuing Education Sponsor and Real Estate Appraiser Education Provider.

ECONOMIC AND DEMOGRAPHIC TRENDS

POPULATION

Serving over 600,000 residents in a 1,442 square mile area, the Joliet Junior College district is one of the fastest growing regional areas in the nation. As the following graph shows, the rate of growth during the 1990's for 5 counties in the district (not including Cook County) was much more rapid than the State of Illinois or the nation.

Percent Change in Population for the Joliet Junior College district, Illinois, and the United States, 1990-2000



As of 2004, Will County's population stood at 613,849, making it the 3rd fastest growing county in the nation for counties with populations over 500,000. In 2003, Will County is the 97th largest county in the country and 4th largest in Illinois (behind Cook, DuPage, and Lake Counties). Will and Kendall Counties are the two fastest growing counties in Illinois, as shown in the table below.

Population of Counties in the Joliet Junior College District, 2000-2004

County	2000	2004	2000-2004 Change
Grundy	37,535	41,069	9.0%
Kankakee	103,890	107,188	3.2%
Kane	407,642	472,482	15.9%
Kendall	54,544	72,548	31.4%
LaSalle	111,504	112,335	0.7%
Will	508,227	613,849	20.8%
ILLINOIS	12,439,674	12,713,634	2.2%

The Joliet Junior College district is projected to be one of the fastest growing regions in the nation. By 2030, the Northeastern Illinois Planning Commission projects the population of Will County will reach 1,100,000, with the population of cities like Wilmington projected to increase 354%, Romeoville by 107%, Plainfield by 404%, New Lenox by 469%, Manhattan by 1,093%, and Joliet by 29%.

EDUCATION

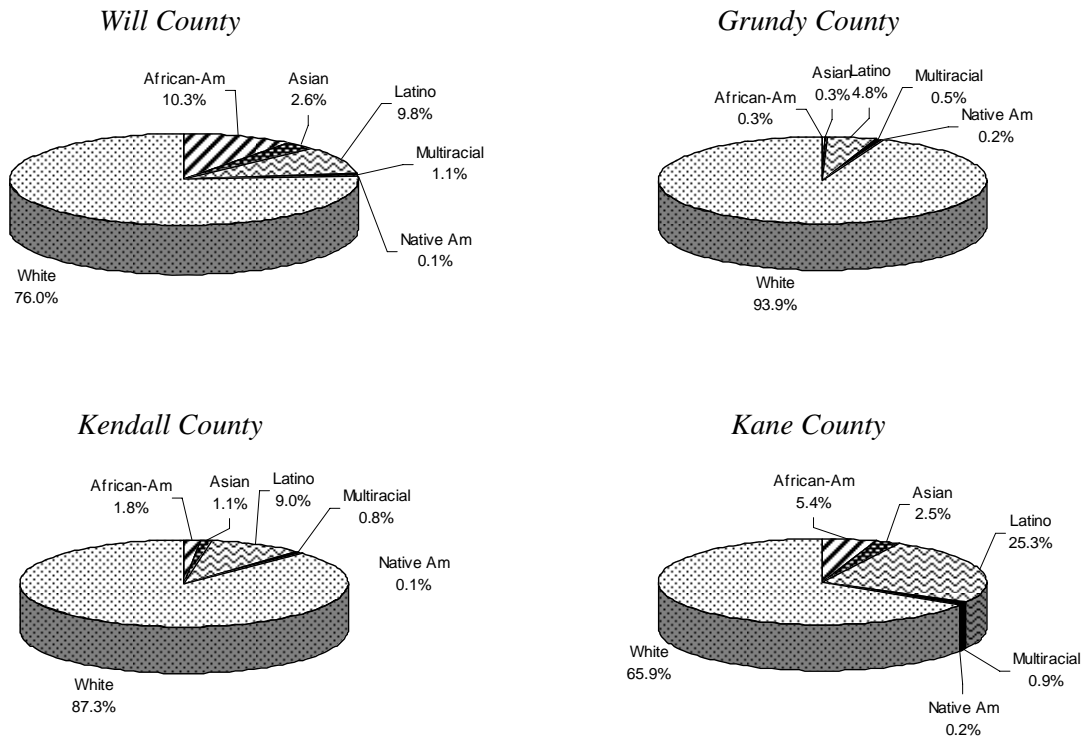
The following table also shows counties in the JJC district will witness dramatic growth in K-12 enrollment between 2003-2004, particularly when compared to relatively flat growth in the rest of the state.

Projected Percent Change in K-12 Enrollment by County Over 2003-2004

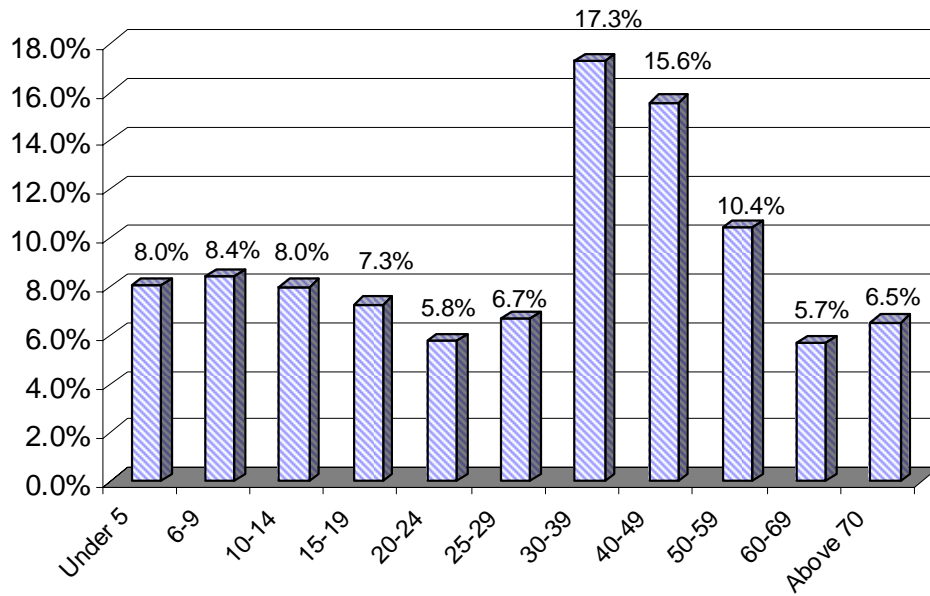
County	2007-2008	2012-2013
Cook	0.8%	1.2%
DuPage	3.8%	8.3%
Grundy	14.0%	35.5%
Kane	11.0%	24.9%
Kankakee	0.6%	0.7%
Kendall	43.6%	126.9%
LaSalle	-0.6%	-0.9%
Livingston	-7.5%	-15.8%
Will	26.0%	68.3%
ILLINOIS	1.7%	0.6%

DEMOGRAPHICS

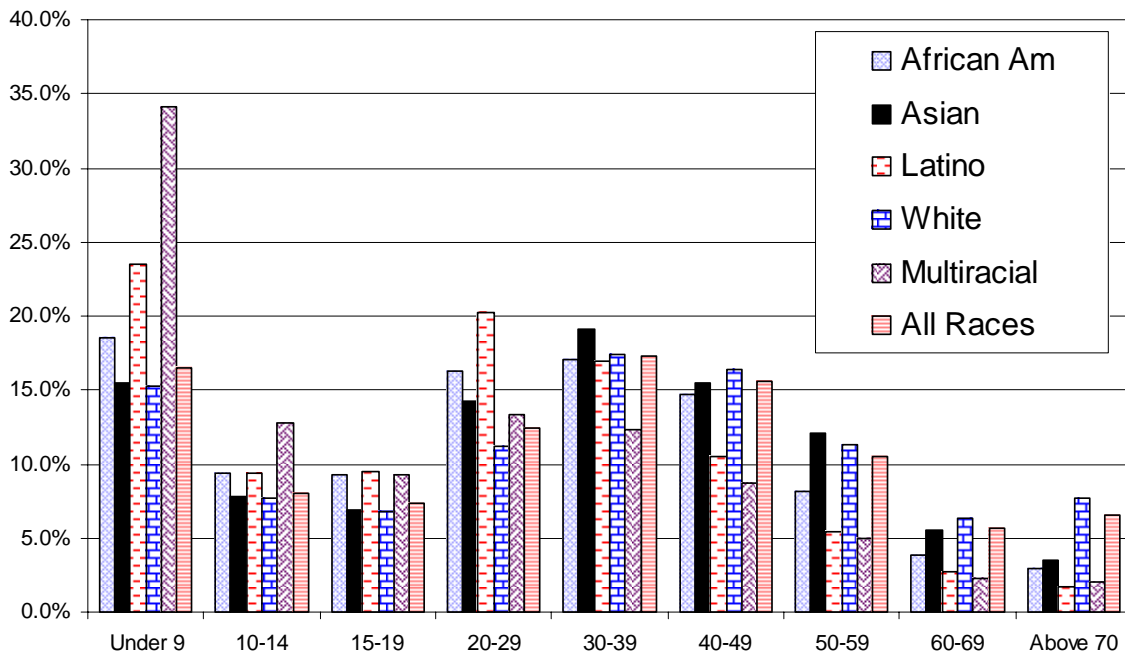
Race and Ethnicity of Selected Counties in the Joliet Junior College District, 2003



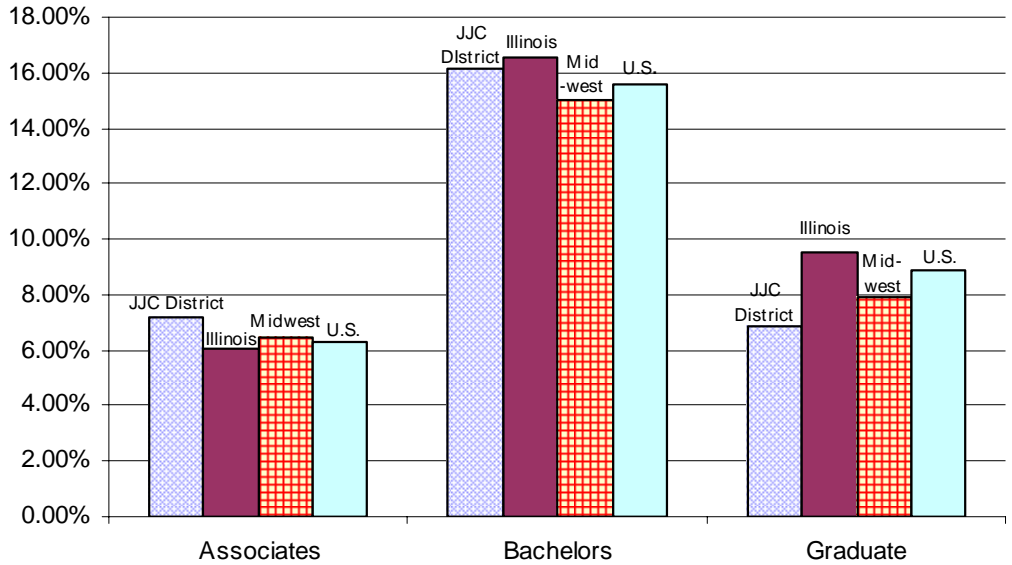
Joliet Junior College District Population by Age, 2000



District Population by Age & Ethnicity in the Joliet Junior College District, 2000

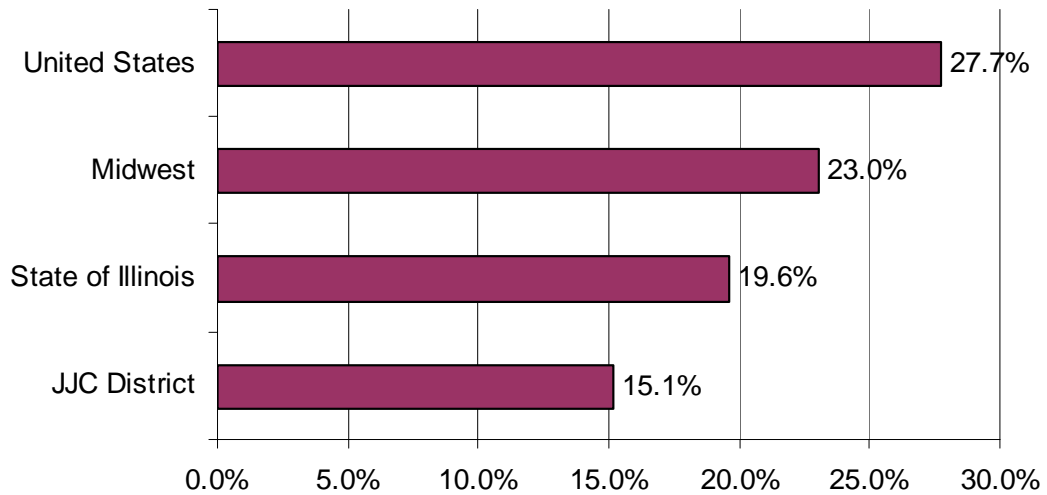


Percent of Population with a College Degree in the Joliet Junior College District, State of Illinois, Midwest, and United States, 2000



Despite having high in-migration rates of people from other regions, an unusually large number of people who live in the Joliet Junior College district continue to reside where they were born. Combined with above average commute times (see below), this suggests that most of the new growth in the district is coming from Illinois, particularly counties surrounding the Joliet Junior College district. It also means that the district retains residents, who are willing to tolerate longer commutes in response to labor incentives, but less willing to move.

Percent of Population Born in Another State, Joliet Junior College District, State of Illinois, Midwest, and United States, 2000



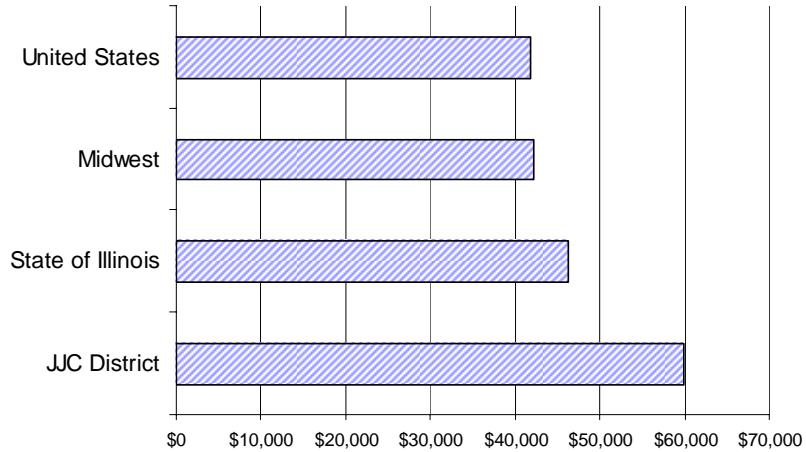
Computer Use of Will County and Illinois Residents in 2000

COMPUTER USE	Will County	Illinois
Percent of households with a computer**	51.7%	50.9%
Percent of households with internet access**	41.9%	40.1%
Households that use the internet/computer for shopping**	17.6%	15.2%
Percent of households with a DVD player**	27.6%	24.8%

ECONOMY & EMPLOYMENT

About 85% of people in the Joliet Junior College live in owned residences, one of the highest rates in the nation. District residents also have higher incomes than other regions, as shown in the following graph.

Median Household Income in the Joliet Junior College District, State of Illinois, Midwest, and United States, 2000



Median Home Values in Selected Will County Cities, 2001-2002

City	2001	2002	Increase
Bolingbrook	\$156,784	\$182,900	16.7%
Channahon	\$167,500	\$186,500	11.3%
Crest Hill	\$106,100	\$167,350	57.7%
Frankfort	\$223,000	\$245,500	10.1%
Joliet	\$113,500	\$125,000	10.1%
Lockport	\$162,861	\$170,200	4.5%
Mokena	\$145,000	\$180,000	24.1%
New Lenox	\$189,150	\$209,000	10.5%
Plainfield	\$177,000	\$187,297	5.8%
Romeoville	\$158,970	\$164,420	3.4%
Shorewood	\$156,000	\$192,814	23.6%
Wilmington	\$115,000	\$128,000	11.3%

The Joliet Junior College district has seen moderate rises in labor force growth, coupled with stabilized and even lower unemployment rates after 4 years of dramatic rises. The State of Illinois Department of Economic Security projects the fastest growing occupational areas in the Joliet Junior District will be in the following areas:

- Computer networks and database administration
- Health care (for instance, medical records, physician assistants, or dental hygienists)
- Education
- Construction

While service sector jobs are projected to increase dramatically in the district, jobs in the manufacturing sector are projected to mirror state and national trends. Between 2002 and 2012, manufacturing jobs are projected to fall by about 3%, compared to an increase of about 18% in the service sector.

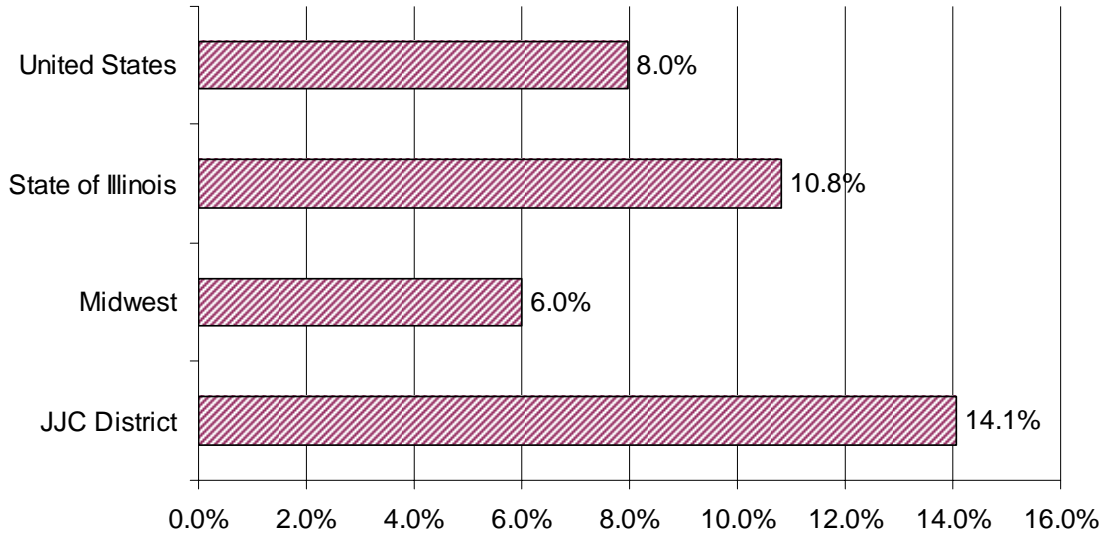
Change in Labor Force for Selected Counties in the Joliet Junior College District, 2003-2004

	2003	2004	Change
Grundy	19,420	19,742	1.7%
Kane	231,045	233,343	1.0%
Kendall	32,691	33,075	1.2%
LaSalle	55,753	56,355	1.1%
Will	276,932	281,084	1.5%

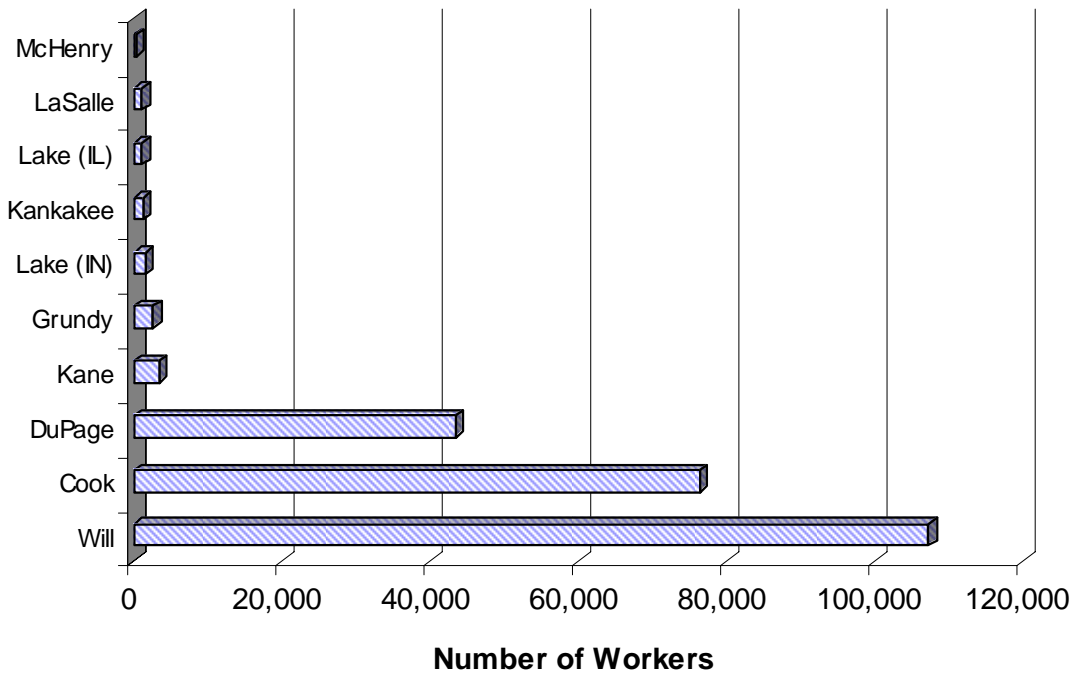
5-year Unemployment Rate for Selected Counties in the Joliet Junior College District, February 2000-February 2005

	2000	2001	2002	2003	2004	2005
Grundy	7.2%	8.7%	9.4%	12.7%	12.9%	9.4%
Kankakee	6.3%	6.4%	8.1%	9.4%	9.4%	8.6%
Kendall	3.5%	3.9%	6.2%	7.5%	7.1%	5.5%
La Salle	7.4%	8.3%	8.9%	10.4%	9.3%	7.7%
Livingston	4.6%	5.5%	5.7%	7.0%	6.2%	6.6%
Will	4.5%	5.5%	6.8%	8.1%	8.3%	6.5%

Percent of Workers over the Age of 16 who Commute at Least One Hour to Work, 2000



Top Commuter Counties for Will County Workers, 2000



*Median Income and Spending Characteristics of Will County and Illinois Residents, 2000** and 2003*

INCOME	Will County	Illinois
Median household income	\$65,186	\$47,977
Per capita income	\$26,113	\$24,654
Families below poverty level	5.0%	8.5%
Percent of household income spent on tobacco**	0.69%	0.72%
Percent of household income spent on education**	1.3%	1.4%
Percent of household income spent on entertainment**	3.9%	4.1%
Percent of household income spent on healthcare**	4.6%	4.8%
Percent of household income spent on books**	0.39%	0.42%
Percent of household income spent on clothing**	4.1%	4.3%
Percent of household income spent on furniture**	3.0%	3.1%

JJC At-a-Glance

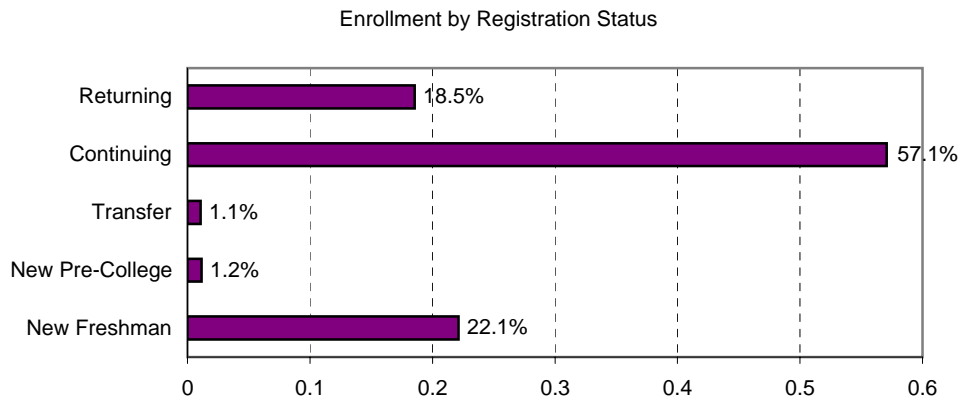
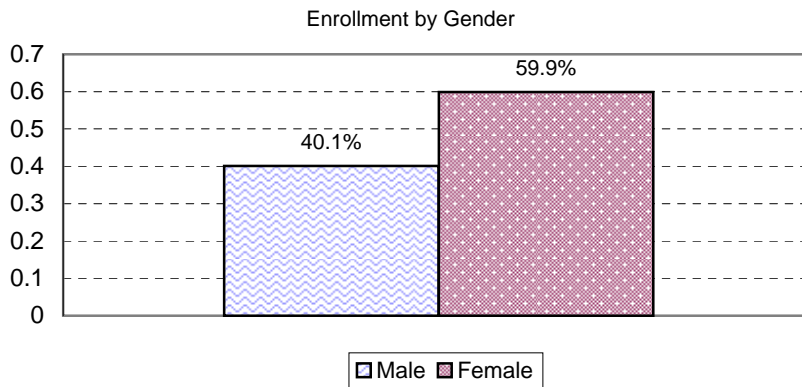
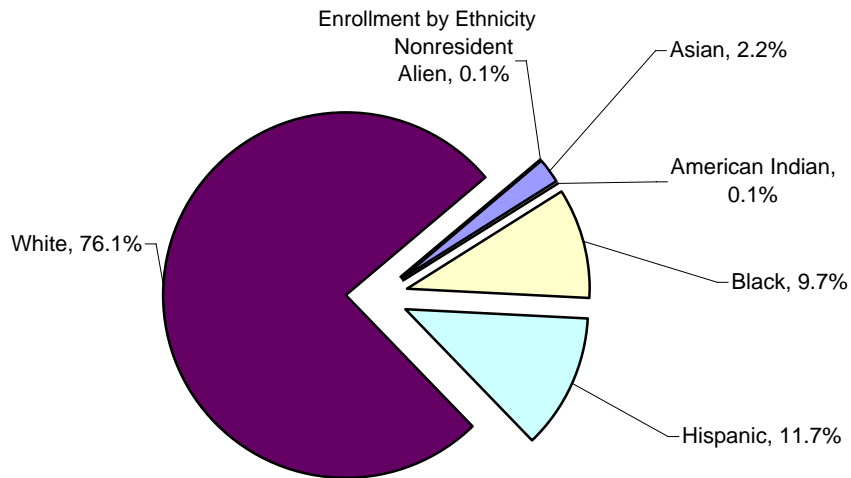
At-a-Glance Fall 2004 Credit Students

Headcount: 12,751
FTE: 7,221

Full-Time: 37%
Part-time: 63%

Average Credits Enrolled
Full-time: 13.82
Part-Time: 5.41

Average Age: 28.0
Median Age: 23.0



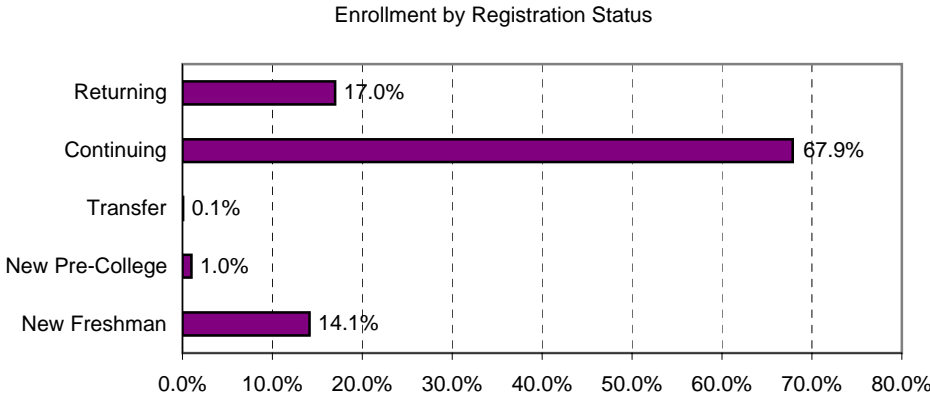
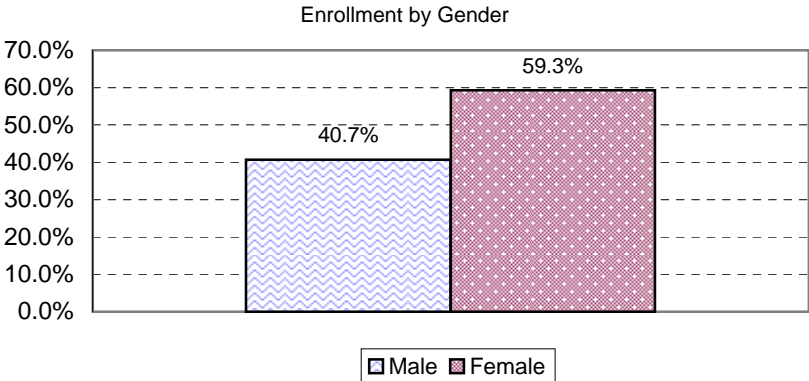
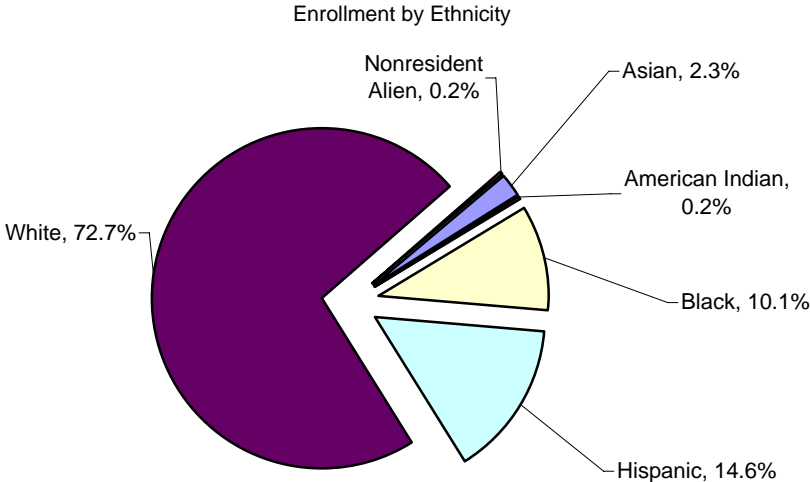
At-a-Glance Spring 2005 Credit Students

Headcount: 12,582
FTE: 6,873

Full-Time: 33%
Part-time: 67%

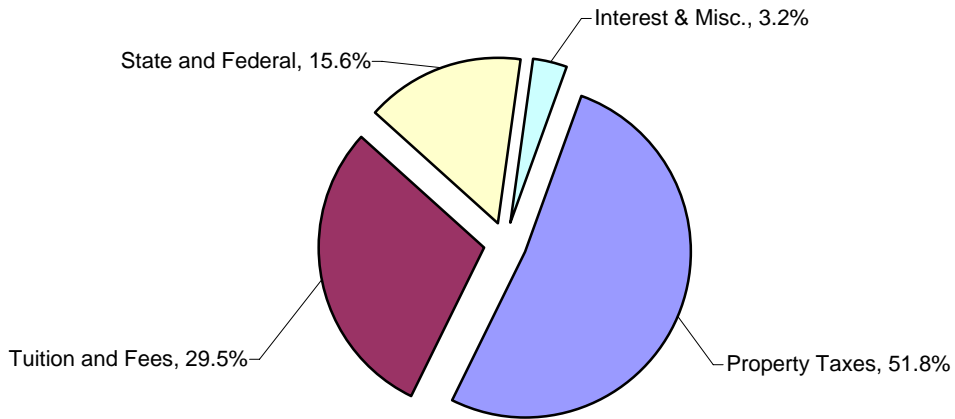
Average Credits Enrolled
Full-time: 13.86
Part-Time: 5.35

Average Age: 28.9
Median Age: 24.0



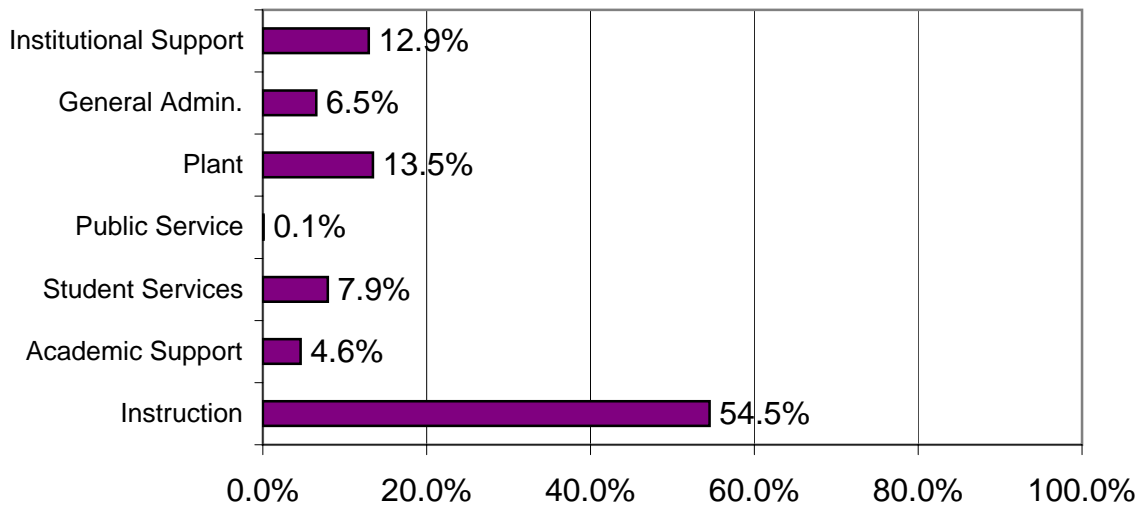
At a Glance Fiscal Year 2004 Finances

FY 2004 Revenues - (Education and Operation & Maintenance Fund Only)



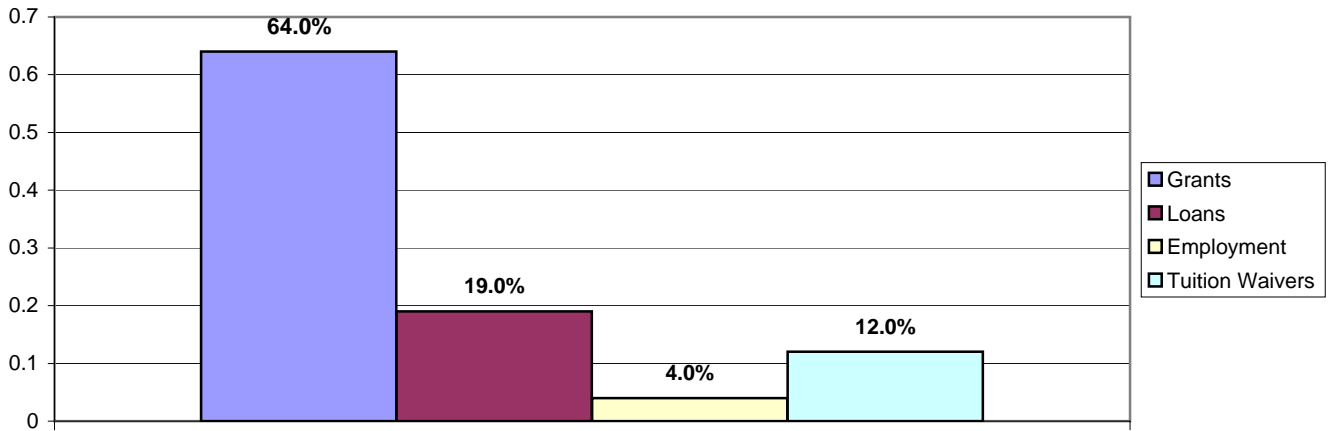
FY 2004 Expenditures - (Education and Operation & Maintenance Fund Only)

Expenditures by Function



At a Glance Fiscal Year 2004 Financial Aid

Breakdown by Financial Aid Type



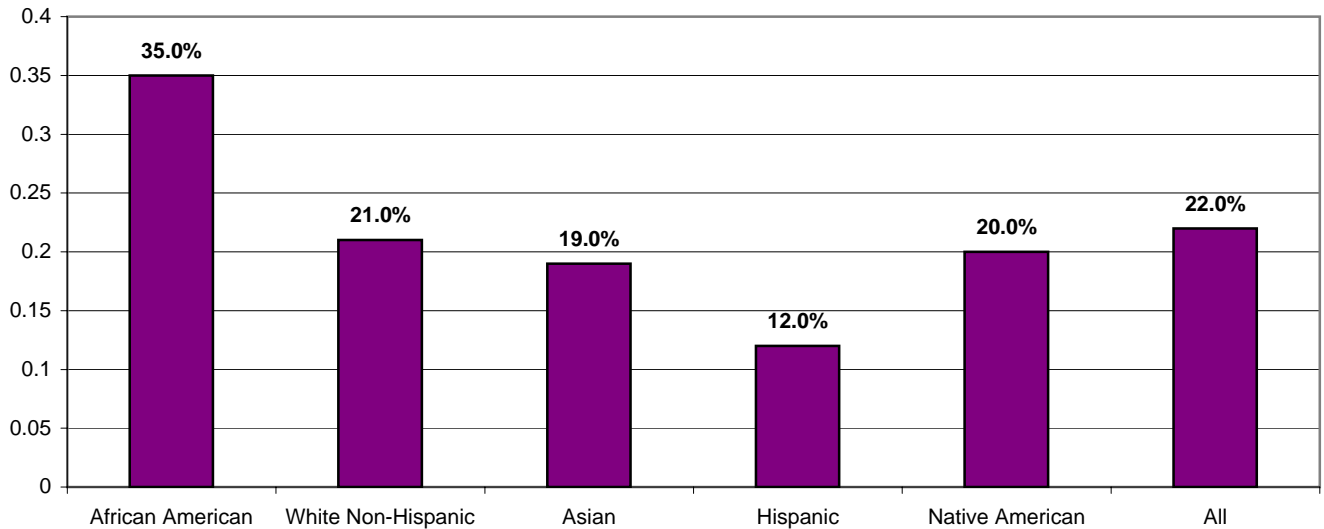
Percent of Students Who Receive the Following Types of Financial Aid

Any Type of Financial Aid: 22%

Student Loans: 3%

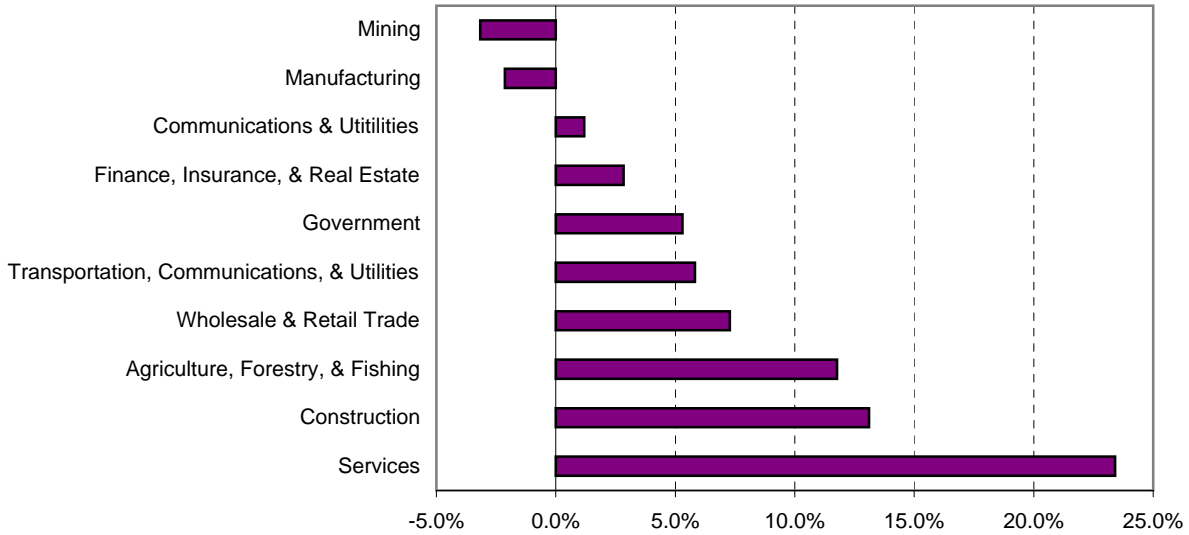
MAP Grant: 5%

Percent of Students Who Receive the Financial Aid by Ethnicity



At-a-Glance Summary
Employment Projections by Industry in the Joliet Junior College District, 2000-2010

Industry	Employment		Employment Change	
	2000	2010	Number	Percent
Services	65,438	80,758	15,320	23.4%
Construction	14,711	16,640	1,929	13.1%
Agriculture, Forestry, & Fishing	5,277	5,898	621	11.8%
Wholesale & Retail Trade	38,983	41,822	2,839	7.3%
Transportation, Communications, & Utilities	12,983	13,738	755	5.8%
Government	10,240	10,782	542	5.3%
Finance, Insurance, & Real Estate	5,122	5,267	145	2.8%
Communications & Utilities	5,550	5,616	66	1.2%
Manufacturing	21,950	21,481	-469	-2.1%
Mining	347	336	-11	-3.2%



Source: IDES (2004)

Part I: Applicants

Fall 2004 Applicants by High School
(In Order of Number of Applicants - 2004)

High School	2003 Count	2004 Count	Percent Change
Lincolnway High School	547	422	-22.9%
Plainfield High School	315	335	6.3%
Joliet Central High School	307	242	-21.2%
Joliet West High School	276	194	-29.7%
Lockport Township High School	231	183	-20.8%
Romeoville High School	178	153	-14.0%
Minooka High School	174	121	-30.5%
Morris Community High School	99	108	9.1%
Bolingbrook High School	144	97	-32.6%
Peotone High School	69	57	-17.4%
Joliet Catholic Academy	57	54	-5.3%
Wilmington High School	50	53	6.0%
Lemont High School	46	49	6.5%
Coal City High School	79	45	-43.0%
Reed Custer High School	54	32	-40.7%
Providence High School	53	30	-43.4%
Gardner-South Wilmington High School	38	30	-21.1%
Dwight Township High School	35	30	-14.3%
Seneca Township High School	36	28	-22.2%
Joliet Catholic High School	29	15	-48.3%
Newark High School	16	15	-6.3%
Joliet East High School	5	1	-80.0%
Saint Francis Academy	4	1	-75.0%
Carl Sandburg High School	1	0	-100.0%
TOTAL:	2,843	2,295	-19.3%
Other High Schools	2,273	1,809	-20.4%
GED	114	206	80.7%
TOTAL OTHER	2,387	2,015	-15.6%
TOTAL OF ALL APPLICANTS	5,230	4,310	-17.6%

Fall 2004 JJC Enrollment by High School-New Students

2004 High School Graduates

(In Order of Enrolled Students - 2004)

High School	2003 Count*	Percent of New	2004 Count**	Percent of New	Percent Change
Lincolnway High School	235	18.6%	297	17.8%	26.4%
Plainfield High School	146	11.6%	236	14.2%	61.6%
Minooka High School	49	3.9%	120	7.2%	144.9%
Joliet West High School	87	6.9%	107	6.4%	23.0%
Lockport Township High School	83	6.6%	99	5.9%	19.3%
Joliet Central High School	67	5.3%	96	5.8%	43.3%
Romeoville High School	56	4.4%	79	4.7%	41.1%
Morris Community High School	41	3.2%	71	4.3%	73.2%
Bolingbrook High School	27	2.1%	38	2.3%	40.7%
Joliet Catholic Acadamey	42	3.3%	36	2.2%	-14.3%
Peotone High School	25	2.0%	33	2.0%	32.0%
Coal City High School	28	2.2%	32	1.9%	14.3%
Wilmington High School	19	1.5%	30	1.8%	57.9%
Reed Custer High School	15	1.2%	25	1.5%	66.7%
Seneca Township High School	20	1.6%	15	0.9%	-25.0%
Lemont High School	6	0.5%	14	0.8%	133.3%
Providence High School	19	1.5%	12	0.7%	-36.8%
Joliet Catholic High School	13	1.0%	12	0.7%	-7.7%
Dwight Township High School	11	0.9%	12	0.7%	9.1%
Gardner-South Wilmington High School	19	1.5%	6	0.4%	-68.4%
Newark High School	7	0.6%	5	0.3%	-28.6%
TOTAL District 525 High Schools:	1,015	80.4%	1,375	82.6%	35.5%
Other High School	242	19.2%	276	16.6%	14.0%
GED	6	0.5%	14	0.8%	133.3%
TOTAL OTHER	248	19.6%	290	17.4%	16.9%
TOTAL*	1,263	100.0%	1,665	100.0%	31.8%

* Includes all Fall 2003 (10th day) students that have a "Start Term" of Fall 2003 and High School information and High School Graduation Year of 2003.

** Includes all Fall 2004 (10th day) students that have a "Start Term" of Fall 2004 and High School information and High School Graduation Year of 2004.

Yield Analysis: Fall 2002, Fall 2003, Fall 2004

High Schools/County	2002			2003			2004		
	Graduates	Joliet's Enrollees	Market Share	Graduates	Joliet's Enrollees	Market Share	Graduates	Joliet's Enrollees	Market Share
Will County									
Bolingbrook HS	321	31	9.66%	340	27	7.94%	491	38	7.74%
Joliet Catholic Academy	205	40	19.51%	219	55	25.11%	198	48	24.24%
Joliet Township High School - Central	465	97	20.86%	491	67	13.65%	535	96	17.94%
Joliet Township High School - West	432	84	19.44%	495	87	17.58%	491	107	21.79%
Lincolnway HS	1,360	240	17.65%	1,383	235	16.99%	1,360	297	21.84%
Lockport Township HS	690	95	13.77%	742	83	11.19%	773	99	12.81%
Peotone HS	130	27	20.77%	150	25	16.67%	128	33	25.78%
Plainfield HS	787	151	19.19%	1,016	146	14.37%	1,107	236	21.32%
Providence Catholic HS	283	19	6.71%	252	19	7.54%	262	12	4.58%
Reed Custer HS	134	27	20.15%	137	15	10.95%	118	25	21.19%
Romeoville HS	400	69	17.25%	476	56	11.76%	354	79	22.32%
Wilmington HS	103	36	34.95%	120	19	15.83%	109	30	27.52%
Subtotal Will County	5,310	916	17.25%	5,821	834	14.33%	5,926	1,100	18.56%
Change in Will Seniors 2002-2004	11.6%								
+/- In Joliet's Enrollment in Will 2002-2004	20.1%								
Livingston County									
Dwight HS	73	15	20.55%	61	11	18.03%	65	12	18.46%
Subtotal Livingston County	73	15	20.55%	61	11	18.03%	65	12	18.46%
Change in Livingston Seniors 2002-2004	-11.0%								
+/- In Joliet's Enrollment in Livingston 2002-2004	-20.0%								
Grundy County									
Coal City HS	146	37	25.34%	128	28	21.88%	142	32	22.54%
Gardner-South Wilmington HS	43	15	34.88%	35	19	54.29%	52	6	11.54%
Minooka HS	346	93	26.88%	326	49	15.03%	322	120	37.27%
Morris HS	243	42	17.28%	214	41	19.16%	219	71	32.42%
Subtotal Grundy County	778	187	24.04%	703	137	19.49%	735	229	31.16%
Change in Grundy Seniors 2002-2004	-5.5%								
+/- In Joliet's Enrollment in Grundy 2002-2004	22.5%								

Yield Analysis: Fall 2002, Fall 2003, Fall 2004

High Schools/County	2002			2003			2004		
	Graduates	Joliet's Enrollees	Market Share	Graduates	Joliet's Enrollees	Market Share	Graduates	Joliet's Enrollees	Market Share
Cook County									
Lemont HS	270	16	5.93%	271	6	2.21%	295	14	4.75%
Subtotal Cook County	270	16	5.93%	271	6	2.21%	295	14	4.75%
Change in Cook Seniors 2002-2004	9.3%								
+/- In Joliet's Enrollment in Cook 2002-2004	-12.5%								
Kendall County									
Newark HS	50	10	20.00%	35	7	20.00%	42	5	11.90%
Subtotal Kendall County	50	10	20.00%	35	7	20.00%	42	5	11.90%
Change in Kendall Seniors 2002-2004	-16.0%								
+/- In Joliet's Enrollment in Kendall 2002-2004	-50.0%								
LaSalle County									
Seneca HS	121	20	16.53%	120	20	16.67%	127	15	11.81%
Subtotal LaSalle County	121	20	16.53%	120	20	16.67%	127	15	11.81%
Change in LaSalle Seniors 2002-2004	5.0%								
+/- In Joliet's Enrollment in LaSalle 2002-2004	-25.0%								
TOTAL	6,602	1,164	17.63%	7,011	1,015	14.48%	7,190	1,375	19.12%

Please Note 2002/2003 Market Share Enrollees Do Not Match Prior Fact Books - Prior Fact Books Reflected any Student Enrolled Regardless of High School Graduation Year
 Current Market Share is Calculated Using Joliet Junior College Fall Enrollee's Divided by the Number of Graduates for the Given Year from Area High Schools.

2004 ACT Scores For 2004-2005 Applicants (Based on New Students)

General Programs	ACT Received		Enrolled		Non-Enrolled		National Average for Two-Year	Difference Enrolled and Non-Enrolled	Difference Between Program and Nat. Ave.
	Count	Average	Count	Average	Count	Average			
Agriculture & Agriculture Technology	91	17.5	38	18.8	47	16.8	19.6	2.0	-2.1
Architecture & Environmental Design	70	17.9	35	18.3	30	17.7	21.6	0.6	-3.7
Business & Management	193	18.4	91	19.0	79	17.8	21.1	1.2	-2.7
Business & Office	22	17.9	5	19.8	14	16.9	19.7	2.9	-1.8
Marketing and Distribution	18	19.2	10	18.9	6	18.5	20.6	0.4	-1.4
Communications & Communication Technology	64	18.5	35	18.1	25	18.9	21.9	-0.8	-3.4
Community & Personal Services	128	17.4	45	18.6	69	16.8	19.4	1.8	-2.0
Computer & Information Science	74	18.2	34	19.5	31	17.2	22.1	2.3	-3.9
Cross-Disciplinary Studies	3	22.0	3	22.0	0	0.0	24.1	22.0	-2.1
Education	131	18.8	70	19.0	45	18.9	20.9	0.1	-2.1
Teacher Education	109	19.1	56	19.1	41	19.2	20.7	-0.1	-1.6
Engineering (Pre-Engineering)	89	17.9	42	19.4	39	16.8	23.3	2.6	-5.4
Engineering-Related Technologies	47	19.1	21	20.3	23	18.0	22.7	2.3	-3.6
Foreign Languages	7	19.1	3	19.7	2	21.5	24.1	-1.8	-5.0
Health Sciences & Allied Health	395	18.8	205	19.5	161	17.7	21.1	1.8	-2.3
Home Economics	100	17.7	44	17.5	49	17.6	19.7	-0.1	-2.0
Letters	7	20.4	3	21.7	4	19.5	25.1	2.2	-4.7
Mathematics	16	20.2	9	20.8	5	20.2	24.7	0.6	-4.5
Philosophy, Religion and Theology	10	19.8	8	19.8	2	20.0	23.3	-0.2	-3.5
Sciences (Biological & Physical)	69	20.3	37	21.6	23	19.0	23.8	2.6	-3.5
Social Sciences	123	20.1	70	21.1	41	18.6	22.5	2.5	-2.4
Trade & Industrial	92	17.6	35	17.5	54	17.7	19.6	-0.2	-2.0
Visual & Performing Arts	178	18.1	80	19.0	76	17.2	21.8	1.8	-3.7
Undecided	225	18.5	106	19.3	91	18.0	21.9	1.3	-3.4
All Students-2004	2,829	18.4	1,379	19.1	1,154	17.8	21.7	1.3	-3.3
Overall-2003	2,753	18.4	1,191	18.7	1,264	18.2	21.9	0.5	-3.5
Difference: 2003-2004	76	0.0	188	0.4	-110	-0.4	-0.2		

Applicants by City/Zip Code: Fall 2004
Top 25 Cities

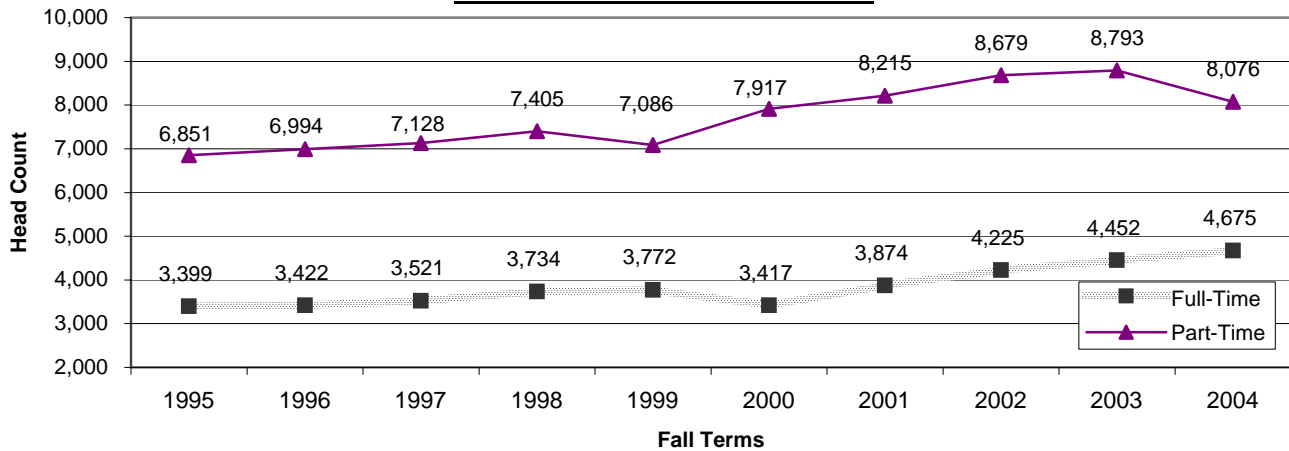
Rank	ZIP	City	County	Count	Percent of Total
1	60544	Plainfield	Will	415	9.6%
2	60435	Joliet	Will	304	7.1%
3	60440	Bolingbrook	Will	248	5.8%
4	60446	Romeoville	Will	230	5.3%
5	60451	New Lenox	Will	217	5.0%
6	60431	Joliet	Will	199	4.6%
7	60450	Morris	Grundy	150	3.5%
8	60441	Lockport	Will	149	3.5%
9	60423	Frankfort	Will	147	3.4%
10	60433	Joliet	Will	139	3.2%
11	60435	Crest Hill	Will	112	2.6%
12	60448	Mokena	Will	108	2.5%
13	60436	Joliet	Will	106	2.5%
14	60432	Joliet	Will	106	2.5%
15	60491	Homer Glen	Will	85	2.0%
16	60431	Shorewood	Will	76	1.8%
17	60481	Wilmington	Will	70	1.6%
18	60439	Lemont	Cook	61	1.4%
19	60447	Minooka	Grundy	61	1.4%
20	60410	Channahon	Will	60	1.4%
21	60490	Bolingbrook	Will	58	1.3%
22	60442	Manhattan	Will	57	1.3%
23	60416	Coal City	Grundy	41	1.0%
24	60468	Peotone	Will	36	0.8%
25	60408	Braidwood	Will	31	0.7%
Total Top 25 Cities				3,266	75.8%

Part II: Student Enrollment

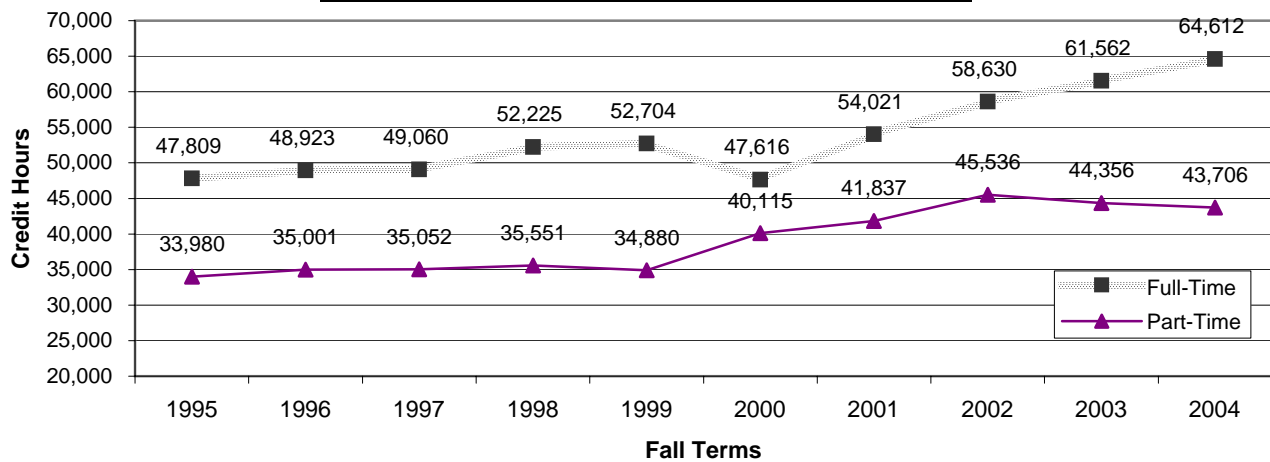
Fall Semesters: Head Count/Credit Hours Full-Time & Part-Time

Fall	Full-Time				Part-Time			
	Head Count	Credit Hours	Head Count 1 Year Difference	Credit Hours 1 Year Difference	Head Count	Credit Hours	Head Count 1 Year Difference	Credit Hours 1 Year Difference
1995	3,399	47,809	--	--	6,851	33,980	--	--
1996	3,422	48,923	0.7%	2.3%	6,994	35,001	2.1%	3.0%
1997	3,521	49,060	2.9%	0.3%	7,128	35,052	1.9%	0.1%
1998	3,734	52,225	6.0%	6.5%	7,405	35,551	3.9%	1.4%
1999	3,772	52,704	1.0%	0.9%	7,086	34,880	-4.3%	-1.9%
2000	3,417	47,616	-9.4%	-9.7%	7,917	40,115	11.7%	15.0%
2001	3,874	54,021	13.4%	13.5%	8,215	41,837	3.8%	4.3%
2002	4,225	58,630	9.1%	8.5%	8,679	45,536	5.6%	8.8%
2003	4,452	61,562	5.4%	5.0%	8,793	44,356	1.3%	-2.6%
2004	4,675	64,612	5.0%	5.0%	8,076	43,706	-8.2%	-1.5%

Full-Time/Part-Time Students



Credit Hours by Full-Time/Part-Time Students



Average Age: Fall Semesters by Full/Part-Time Status

Fall	Full-Time Average Age	Part-Time Average Age	Overall Average Age
1995	22.35	33.35	29.71
1996	22.34	32.90	29.43
1997	21.99	33.54	29.54
1998	21.93	33.69	29.74
1999	21.12	32.51	28.55
2000	24.31	32.60	30.10
2001	21.46	31.81	28.49
2002	21.24	32.13	28.55
2003	21.10	32.23	28.50
2004	21.28	31.84	27.95

Fall 2004 Median Age: 23.0

Fall 1995-2004-Degree Status

Fall	Degree Seeking		Non-Degree Seeking*		Total
	Count	Percent	Count	Percent	
1995	8,979	87.6%	1,271	12.4%	10,250
1996	8,929	85.7%	1,487	14.3%	10,416
1997	9,067	85.1%	1,582	14.9%	10,649
1998	9,296	83.5%	1,843	16.5%	11,139
1999	9,396	86.5%	1,462	13.5%	10,858
2000	9,228	81.4%	2,108	18.6%	11,336
2001	9,997	82.7%	2,092	17.3%	12,089
2002	10,244	79.4%	2,660	20.6%	12,904
2003	10,323	77.9%	2,922	22.1%	13,245
2004	10,179	79.8%	2,572	20.2%	12,751

* Students with the VOCSK, ABE, ASE, ESL, or OCCUP Degree Curriculum Codes are Non-Degree Seeking.

Fall 1995-2004-Registration Status*

Fall	First-Time		Transfer		Continuing		Readmit	
	Count	Percent	Count	Percent	Count	Percent	Count	Percent
1995	2,735	24.3%	28	0.2%	5,511	49.0%	2,974	26.4%
1996	2,629	25.2%	132	1.3%	5,708	54.8%	1,945	7.0%
1997	2,844	26.7%	120	1.1%	5,455	51.2%	2,228	20.9%
1998	2,933	26.3%	268	2.4%	5,665	50.9%	2,271	20.4%
1999	2,418	22.3%	240	2.2%	5,982	55.1%	2,218	20.4%
2000	2,753	24.3%	249	2.2%	6,170	54.4%	2,164	19.1%
2001	2,863	23.9%	183	1.5%	6,542	54.7%	2,372	19.8%
2002	3,051	23.9%	223	1.7%	6,936	54.3%	2,570	20.1%
2003	3,230	24.5%	135	1.0%	7,311	55.5%	2,490	18.9%
2004	2,822	22.4%	138	1.1%	7,278	57.7%	2,365	18.8%

* Does Not Include Pre-College Students

Fall Semesters: Head Count/Credit Hours by Ethnicity

Ethnicity	Fall 2003		Fall 2004		Difference	
	Head Count	Credit Hours	Head Count	Credit Hours	Head Count	Credit Hours
African-American	1,343	10,879	1,242	10,694	-7.5%	-1.7%
Native-American	33	254	18	151	-45.5%	-40.4%
Asian	278	2,174	279	2,433	0.4%	11.9%
Hispanic	1,756	11,440	1,493	11,700	-15.0%	2.3%
Caucasian	9,810	80,945	9,703	83,185	-1.1%	2.8%
Non-Resident Alien	25	227	16	155	-36.0%	-31.7%
TOTAL	13,245	105,917	12,751	108,318	-3.7%	2.3%

Fall Semesters: Head Count/Credit Hours by Gender

Gender	Fall 2003		Fall 20004		Difference	
	Head Count	Credit Hours	Head Count	Credit Hours	Head Count	Credit Hours
Male	5,529	45,963	5,117	45,735	-7.5%	-0.5%
Female	7,716	59,954	7,634	62,583	-1.1%	4.4%
TOTAL	13,245	105,917	12,751	108,318	-3.7%	2.3%

Enrollment by Top 50 Cities
Fall 2004, 10th-Day Counts
(In Order of Headcount)

City	Head Count	Mean Credits Enrolled	Headcount		Credit Hours Generated		
			Percent of Total	Rank by Head Count	Credit Hours Generated	Percent of Total	Rank by Credit Hours Generated
Joliet	3,225	8.22	25.3%	1	26,502	24.5%	1
Plainfield	1,333	8.29	10.5%	2	11,057	10.2%	2
New Lenox	816	9.07	6.4%	3	7,400	6.8%	3
Bolingbrook	786	8.31	6.2%	4	6,531	6.0%	4
Romeoville	720	7.67	5.6%	5	5,521	5.1%	5
Lockport	583	7.73	4.6%	6	4,508	4.2%	7
Morris	537	8.61	4.2%	7	4,626	4.3%	6
Frankfort	459	9.58	3.6%	8	4,398	4.1%	8
Mokena	415	9.20	3.3%	9	3,817	3.5%	9
Crest Hill	332	8.84	2.6%	10	2,936	2.7%	10
Shorewood	316	8.78	2.5%	11	2,775	2.6%	11
Minooka	294	9.04	2.3%	12	2,658	2.5%	13
Channahon	289	8.73	2.3%	13	2,524	2.3%	14
Homer Glen	283	9.53	2.2%	14	2,697	2.5%	12
Wilmington	269	8.26	2.1%	15	2,223	2.1%	15
Manhattan	206	9.72	1.6%	16	2,003	1.8%	16
Coal City	172	8.24	1.3%	17	1,418	1.3%	17
Lemont	153	7.48	1.2%	18	1,144	1.1%	19
Braidwood	135	9.12	1.1%	19	1,232	1.1%	18
Elwood	116	7.27	0.9%	20-21	887	0.8%	21
Dwight	116	7.65	0.9%	20-21	843	0.8%	22
Peotone	99	9.09	0.8%	22	900	0.8%	20
Gardner	75	6.61	0.6%	23-24	496	0.5%	24
Tinley Park	75	8.14	0.6%	23-24	611	0.6%	23
Rockdale	51	8.57	0.4%	25	437	0.4%	25
Diamond	43	9.08	0.3%	26	391	0.4%	26-27
Chicago	42	9.31	0.3%	27	391	0.4%	26-27
Naperville	36	7.03	0.3%	28	253	0.2%	33-34
Newark	35	10.46	0.3%	29	366	0.3%	29
Orland Park	34	7.60	0.3%	30	259	0.2%	31
Seneca	32	11.81	0.3%	31	378	0.3%	28
Mazon	28	9.04	0.2%	32	253	0.2%	33-34
Monee	26	9.77	0.2%	33	254	0.2%	32
Marseilles	25	10.48	0.2%	34-35	262	0.2%	30
Braceville	25	7.46	0.2%	34-35	187	0.2%	36
Oswego	21	8.83	0.2%	36	186	0.2%	37
Kankakee	20	7.75	0.2%	37	155	0.1%	40
Verona	18	8.50	0.1%	38-39	171	0.2%	39
Custer Park	18	9.50	0.1%	38-39	153	0.1%	41
Aurora	17	7.94	0.1%	40	135	0.1%	42
Ottawa	16	12.31	0.1%	41	197	0.2%	35
Yorkville	15	12.00	0.1%	42-43	180	0.2%	38
S Wilmington	15	8.40	0.1%	42-43	126	0.1%	43
Godley	11	7.18	0.1%	44-45	82	0.1%	46
Essex	11	7.41	0.1%	44-45	79	0.1%	47
Homewood	10	6.30	0.1%	46-47	112	0.1%	44
Woodridge	10	11.20	0.1%	46-47	63	0.1%	50
Sheridan	9	9.89	0.1%	48	89	0.1%	45
Bourbonnais	8	8.25	0.1%	49-50	66	0.1%	48
Manteno	8	8.00	0.1%	49-50	64	0.1%	49

Based on ICCB E1 File
for 2004 and R-17 Information

Where Students Transfer From (Fall 2004 Transfer Students)
(In Order of Count)

College	Count	Percent of Known Schools	Type
Moraine Valley	17	16.67%	2-Year College
Military Credit	11	10.78%	Military Service
College of Dupage	7	6.86%	2-Year College
Prairie State College	4	3.92%	2-Year College
Northern Illinois	4	3.92%	4-Year College
UIC-Chicago	4	3.92%	4-Year College
Waubonsee Community	4	3.92%	2-Year College
Richard J. Daley College	3	2.94%	2-Year College
Eastern Illinois University	3	2.94%	4-Year College
Illinois State University	3	2.94%	4-Year College
Illinois Valley CC	3	2.94%	2-Year College
Triton College	3	2.94%	2-Year College
South Suburbam College	2	1.96%	2-Year College
Devry University	2	1.96%	4-Year College
Kennedy-King College	2	1.96%	2-Year College
College of St. Francis	2	1.96%	4-Year College
Lewis University	2	1.96%	4-Year College
Morton College	2	1.96%	2-Year College
Benedictine-IL	2	1.96%	4-Year College
National Louis University	1	0.98%	4-Year College
Monmouth College	1	0.98%	4-Year College
Kendall College	1	0.98%	4-Year College
Loyola University-Chicago	1	0.98%	4-Year College
Illinois Wesleyan University	1	0.98%	4-Year College
Illinois Institute of Technology	1	0.98%	4-Year College
Augustana College	1	0.98%	4-Year College
College of Lake County	1	0.98%	2-Year College
St. Augustine College	1	0.98%	4-Year College
Black Hawk College-Quad Cities	1	0.98%	2-Year College
Harold Washington College	1	0.98%	2-Year College
Wilbur Wright College	1	0.98%	2-Year College
Elgin Community College	1	0.98%	2-Year College
Chicago State University	1	0.98%	4-Year College
North Central College	1	0.98%	4-Year College
Sauk Valley Community College	1	0.98%	2-Year College
SIU-Carbondale	1	0.98%	4-Year College
UIC-Urbana	1	0.98%	4-Year College
William Rainy Harper College	1	0.98%	2-Year College
Illinois Central College	1	0.98%	2-Year College
Kishwaukee College	1	0.98%	2-Year College
Oakton Comm College	1	0.98%	2-Year College
TOTAL Known Transfer FROM Schools	102	73.91%	--
Unknown	36	26.09%	
TOTAL Transfer FROM Students: Fall 2004	138		

College	Count	Percent of Known Schools
Military Service	11	10.8%
Transfer from 2-year colleges	57	55.9%
Transfer from 4-year colleges	34	33.3%
TOTAL Known Transfer FROM Schools	102	100.0%