

PURPOSE OF THE FACT BOOK

The Office of Institutional Effectiveness maintains and develops data resources at the college to support strategic planning and policy-making processes as a component of its mission. The efforts of the office are aimed at improving the quality of education and services at Joliet Junior College. The fact book is an annual compilation to help assist with these efforts by providing the College with current and trend data.

For comments and additional information regarding the fact book please contact the Joliet Junior College - Office of Institutional Effectiveness, 1215 Houbolt Road, Joliet, Illinois 60431.
Phone: 815-280-2629, Fax: 815-729-4256, E-mail: effectiveness@jjc.edu

The fact book can also be viewed online at www.jjc.edu/admin/ie

ABOUT THE COLLEGE

Founded in 1901, Joliet Junior College is the first public community college in the nation. With an initial enrollment of 6 students, Joliet Junior College today annually enrolls over 20,000 students. The college offers pre-baccalaureate programs for students planning to transfer to a four-year university, occupational education leading directly to employment, adult education and literacy programs, work force and workplace development services, and support services to help students succeed.

Joliet Junior College is accredited through the Higher Learning Commission, a part of the North Central Association for Schools and Colleges. Colleges and universities can participate in the traditional accreditation process through the Higher Learning Commission or through the Academic Quality Improvement Program (AQIP). As a member of AQIP, Joliet Junior College is committed to the continual improvement of its academic programs and support services.

JJC is one of only 19 colleges and universities nationwide to receive a National Medallion Award for student development.

MISSION

Joliet Junior College is committed to providing a quality education that is affordable and accessible to the diverse student population it serves. Through a rich variety of educational programs and support services, JJC prepares its students for success in higher education and employment. As part of this College's commitment to lifelong learning and services to its community, it also provides a broad spectrum of transitional, extension, adult, continuing and workforce education.

ACCREDITATION OF INDIVIDUAL DEGREE PROGRAMS

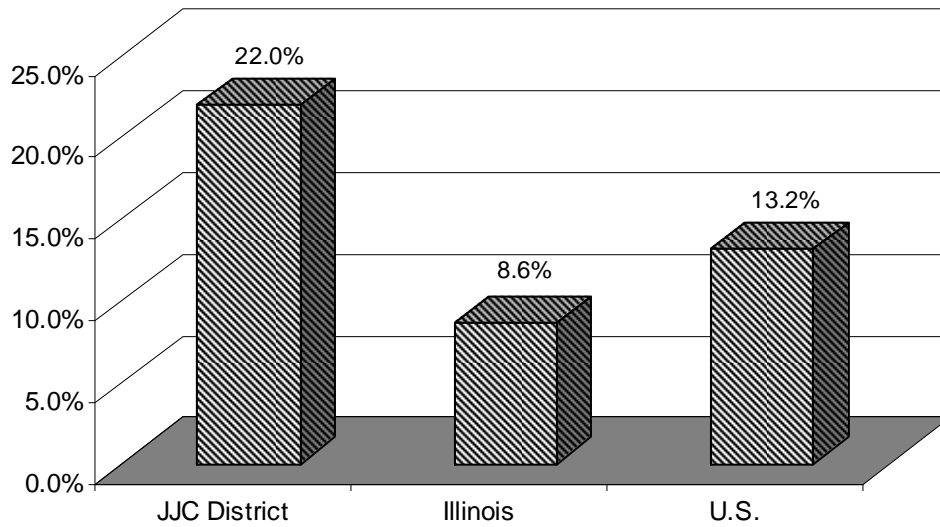
Joliet Junior College is accredited by the North Central Association of Colleges and Schools. JJC is approved by the American Culinary Federation, Association of Business Schools and Programs, the National Automotive Technicians Education Foundation, the National League of Nursing, the State Approving Agency for Veteran's Education, and the National Association of Schools of Music. The College also is an approved Nursing Home Administrator Continuing Education Sponsor and Real Estate Appraiser Education Provider.

ECONOMIC AND DEMOGRAPHIC TRENDS

POPULATION

Serving over 600,000 residents in a 1,442 square mile area, the Joliet Junior College district is one of the fastest growing regional areas in the nation. As the following graph shows, the rate of growth during the 1990's for 5 counties in the district (not including Cook County) was much more rapid than the State of Illinois or the nation.

Percent Change in Population for the Joliet Junior College district, Illinois, and the United States, 1990-2000



As of 2004, Will County's population stood at 613,849, making it the 3rd fastest growing county in the nation for counties with populations over 500,000. In 2003, Will County is the 97th largest county in the country and 4th largest in Illinois (behind Cook, DuPage, and Lake Counties). Will and Kendall Counties are the two fastest growing counties in Illinois, as shown in the table below.

Population of Counties in the Joliet Junior College District, 2000-2004

County	2000	2004	2000-2004 Change
Grundy	37,535	41,069	9.0%
Kankakee	103,890	107,188	3.2%
Kane	407,642	472,482	15.9%
Kendall	54,544	72,548	31.4%
LaSalle	111,504	112,335	0.7%
Will	508,227	613,849	20.8%
ILLINOIS	12,439,674	12,713,634	2.2%

The Joliet Junior College district is projected to be one of the fastest growing regions in the nation. By 2030, the Northeastern Illinois Planning Commission projects the population of Will County will reach 1,100,000, with the population of cities like Wilmington projected to increase 354%, Romeoville by

107%, Plainfield by 404%, New Lenox by 469%, Manhattan by 1,093%, and Joliet by 29%.

EDUCATION

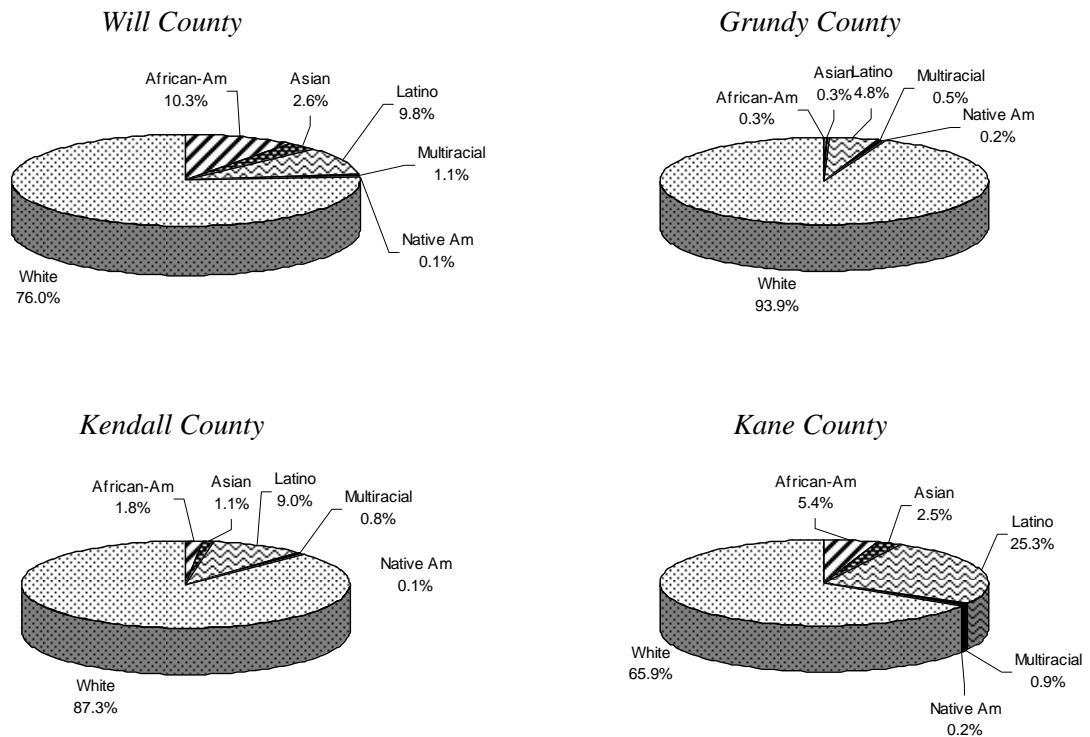
The following table also shows counties in the JJC district will witness dramatic growth in K-12 enrollment between 2003-2004, particularly when compared to relatively flat growth in the rest of the state.

Projected Percent Change in K-12 Enrollment by County Over 2003-2004

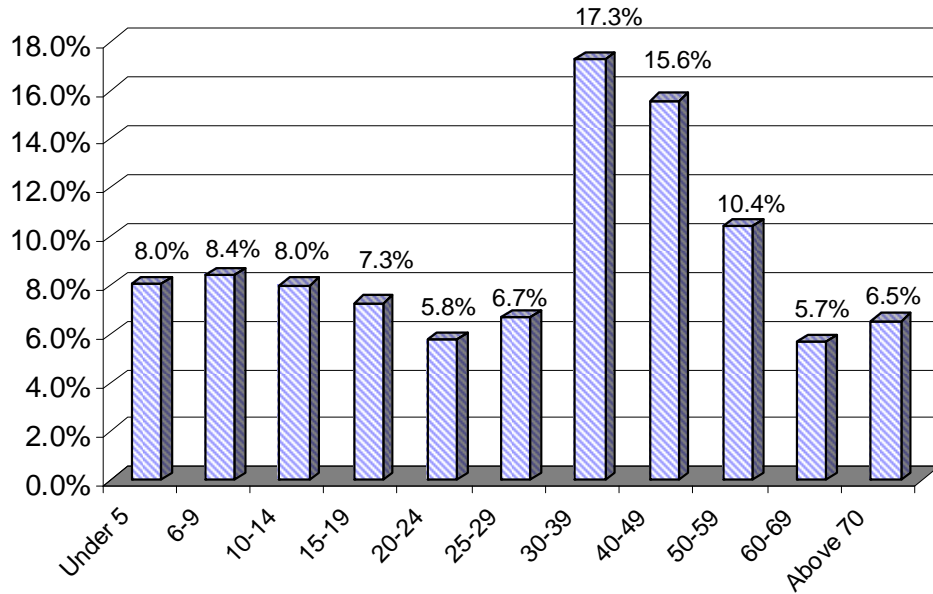
County	2007-2008	2012-2013
Cook	0.8%	1.2%
DuPage	3.8%	8.3%
Grundy	14.0%	35.5%
Kane	11.0%	24.9%
Kankakee	0.6%	0.7%
Kendall	43.6%	126.9%
LaSalle	-0.6%	-0.9%
Livingston	-7.5%	-15.8%
Will	26.0%	68.3%
ILLINOIS	1.7%	0.6%

DEMOGRAPHICS

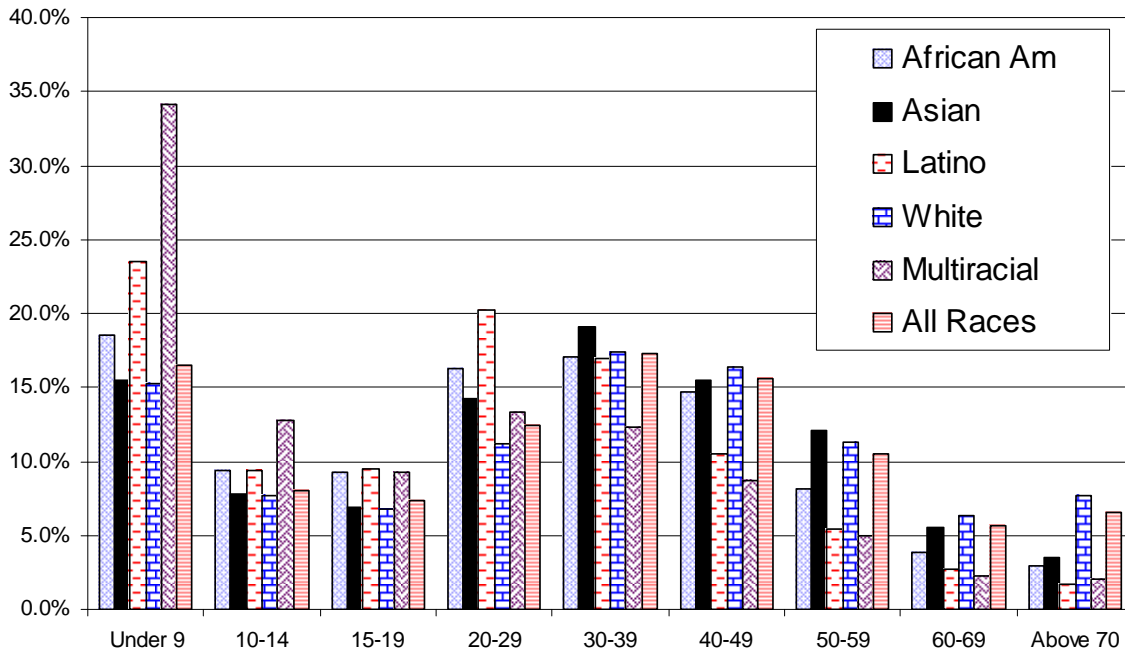
Race and Ethnicity of Selected Counties in the Joliet Junior College District, 2003



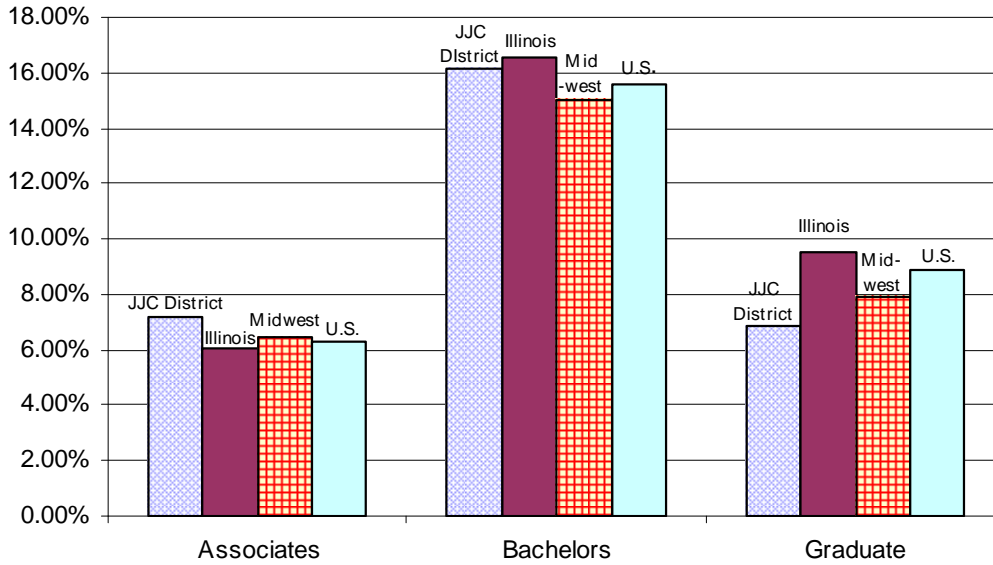
Joliet Junior College District Population by Age, 2000



District Population by Age & Ethnicity in the Joliet Junior College District, 2000

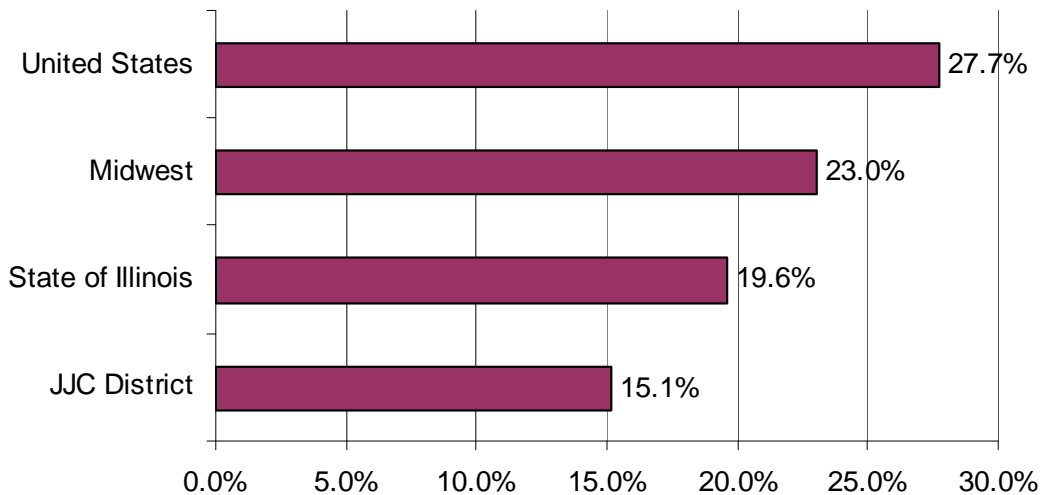


Percent of Population with a College Degree in the Joliet Junior College District, State of Illinois, Midwest, and United States, 2000



Despite having high in-migration rates of people from other regions, an unusually large number of people who live in the Joliet Junior College district continue to reside where they were born. Combined with above average commute times (see below), this suggests that most of the new growth in the district is coming from Illinois, particularly counties surrounding the Joliet Junior College district. It also means that the district retains residents, who are willing to tolerate longer commutes in response to labor incentives, but less willing to move.

Percent of Population Born in Another State, Joliet Junior College District, State of Illinois, Midwest, and United States, 2000



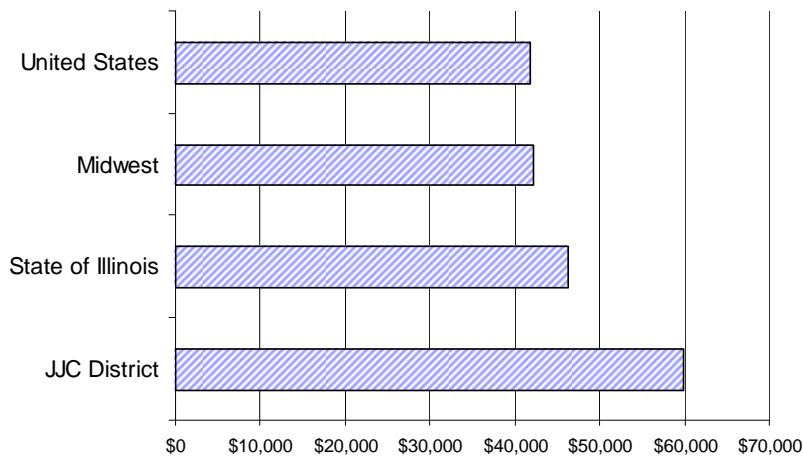
Computer Use of Will County and Illinois Residents in 2000

COMPUTER USE	Will County	Illinois
Percent of households with a computer**	51.7%	50.9%
Percent of households with internet access**	41.9%	40.1%
Households that use the internet/computer for shopping**	17.6%	15.2%
Percent of households with a DVD player**	27.6%	24.8%

ECONOMY & EMPLOYMENT

About 85% of people in the Joliet Junior College live in owned residences, one of the highest rates in the nation. District residents also have higher incomes than other regions, as shown in the following graph.

Median Household Income in the Joliet Junior College District, State of Illinois, Midwest, and United States, 2000



Median Home Values in Selected Will County Cities, 2001-2002

City	2001	2002	Increase
Bolingbrook	\$156,784	\$182,900	16.7%
Channahon	\$167,500	\$186,500	11.3%
Crest Hill	\$106,100	\$167,350	57.7%
Frankfort	\$223,000	\$245,500	10.1%
Joliet	\$113,500	\$125,000	10.1%
Lockport	\$162,861	\$170,200	4.5%
Mokena	\$145,000	\$180,000	24.1%
New Lenox	\$189,150	\$209,000	10.5%
Plainfield	\$177,000	\$187,297	5.8%
Romeoville	\$158,970	\$164,420	3.4%
Shorewood	\$156,000	\$192,814	23.6%
Wilmington	\$115,000	\$128,000	11.3%

The Joliet Junior College district has seen moderate rises in labor force growth, coupled with stabilized and even lower unemployment rates after 4 years of dramatic rises. The State of Illinois Department of Economic Security projects the fastest growing occupational areas in the Joliet Junior District will be in the following areas:

- Computer networks and database administration
- Health care (for instance, medical records, physician assistants, or dental hygienists)
- Education
- Construction

While service sector jobs are projected to increase dramatically in the district, jobs in the manufacturing sector are projected to mirror state and national trends. Between 2002 and 2012, manufacturing jobs are projected to fall by about 3%, compared to an increase of about 18% in the service sector.

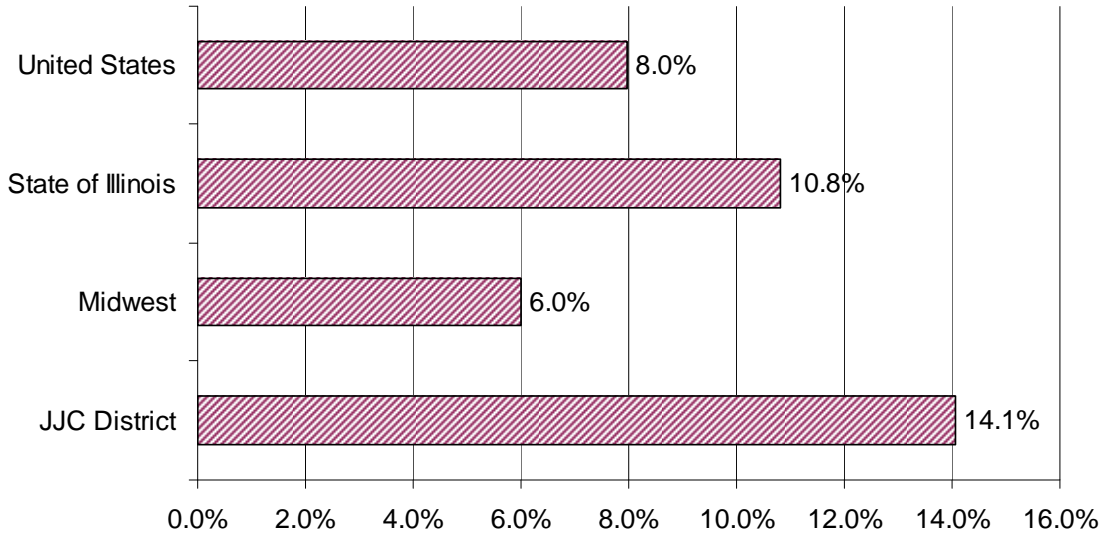
Change in Labor Force for Selected Counties in the Joliet Junior College District, 2003-2004

	2003	2004	Change
Grundy	19,420	19,742	1.7%
Kane	231,045	233,343	1.0%
Kendall	32,691	33,075	1.2%
LaSalle	55,753	56,355	1.1%
Will	276,932	281,084	1.5%

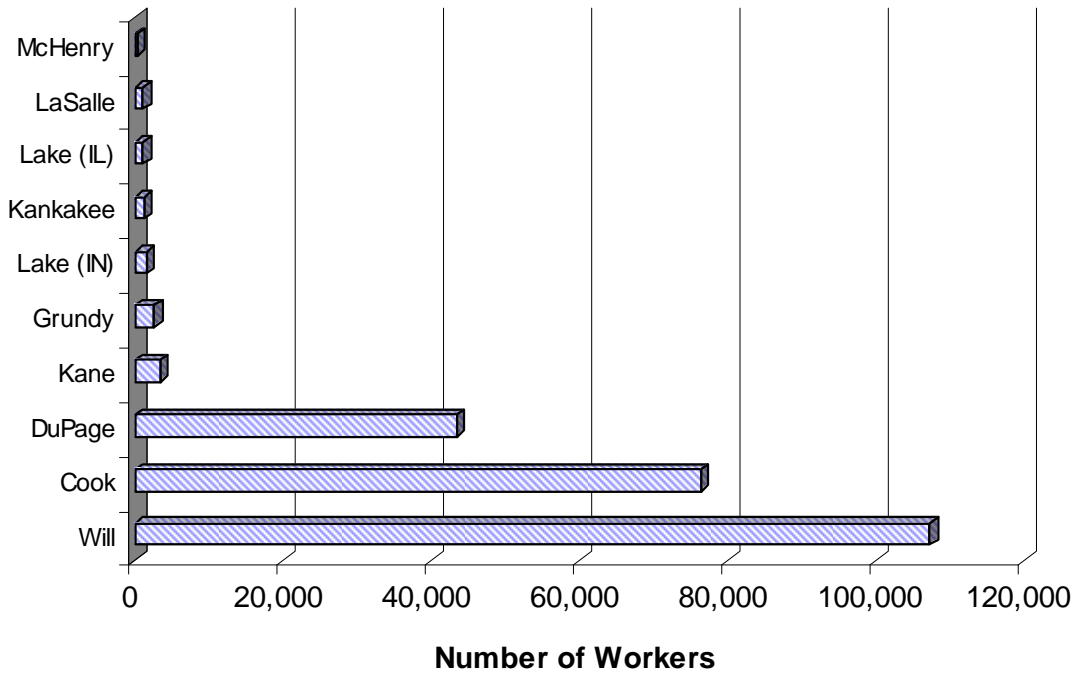
5-year Unemployment Rate for Selected Counties in the Joliet Junior College District, February 2000-February 2005

	2000	2001	2002	2003	2004	2005
Grundy	7.2%	8.7%	9.4%	12.7%	12.9%	9.4%
Kankakee	6.3%	6.4%	8.1%	9.4%	9.4%	8.6%
Kendall	3.5%	3.9%	6.2%	7.5%	7.1%	5.5%
La Salle	7.4%	8.3%	8.9%	10.4%	9.3%	7.7%
Livingston	4.6%	5.5%	5.7%	7.0%	6.2%	6.6%
Will	4.5%	5.5%	6.8%	8.1%	8.3%	6.5%

Percent of Workers over the Age of 16 who Commute at Least One Hour to Work, 2000



Top Commuter Counties for Will County Workers, 2000



*Median Income and Spending Characteristics of Will County and Illinois Residents, 2000** and 2003*

INCOME	Will County	Illinois
Median household income	\$65,186	\$47,977
Per capita income	\$26,113	\$24,654
Families below poverty level	5.0%	8.5%
Percent of household income spent on tobacco**	0.69%	0.72%
Percent of household income spent on education**	1.3%	1.4%
Percent of household income spent on entertainment**	3.9%	4.1%
Percent of household income spent on healthcare**	4.6%	4.8%
Percent of household income spent on books**	0.39%	0.42%
Percent of household income spent on clothing**	4.1%	4.3%
Percent of household income spent on furniture**	3.0%	3.1%