

Spring 2000-2004 Enrollment Trends at Joliet Junior College and Illinois Community Colleges

Office of Institutional Effectiveness
Joliet Junior College
March 2004

Every semester, Joliet Junior and other community colleges are required to submit enrollment data to the State of Illinois through the Illinois Community College Board (ICCB).

Enrollments numbers reflect enrollment in credit courses only and are based on enrollments as of the 10th day of the Spring semester.

Enrollment information is presented in 2 formats:

1. **Head count enrollment** is based on the number of students enrolled, irregardless of number of credit hours a student is enrolled in.
2. **Full-time Equivalent (FTE) enrollment** is based on the number of full-time students a college theoretically enrolls. Basically, FTE equals the number of students divided by the total number of credit hours all students are enrolled in.

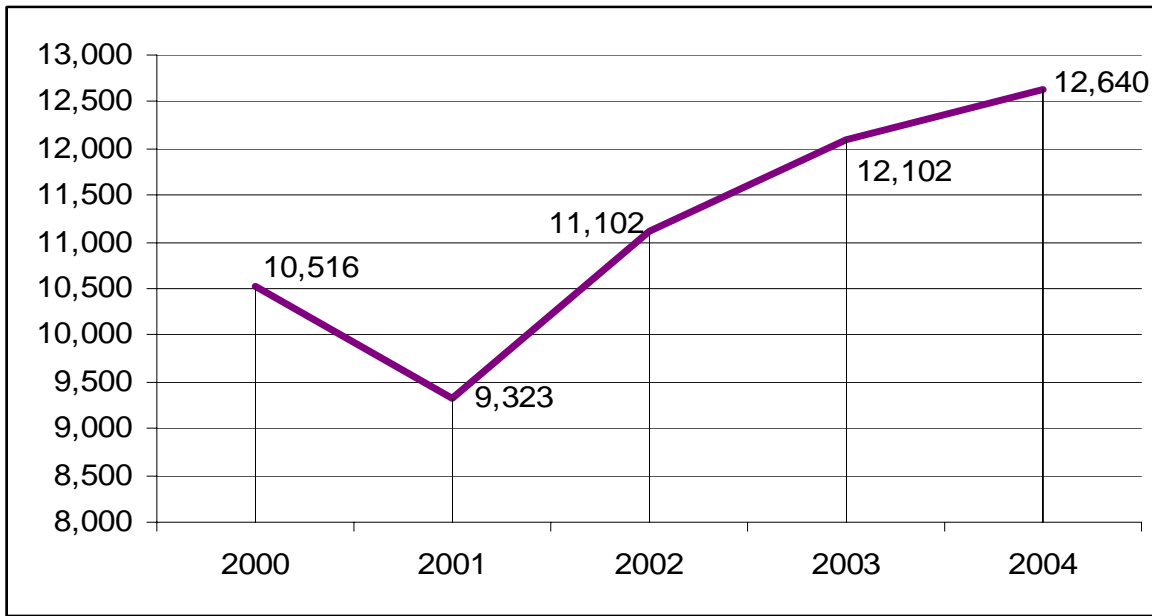
Highlights

- Joliet Junior College saw a 20.2% increase in Head Count enrollment over the last 5 years, the 11th fastest rate of growth in the state.
- Joliet Junior College's headcount increased 2,124, the 6th highest in the state.
- Joliet Junior College's full-time equivalent enrollment rose at a faster rate than headcount enrollment, suggesting more full-time students enrolled over the past 5 years.

Spring 2004 Enrollment at Joliet Junior College

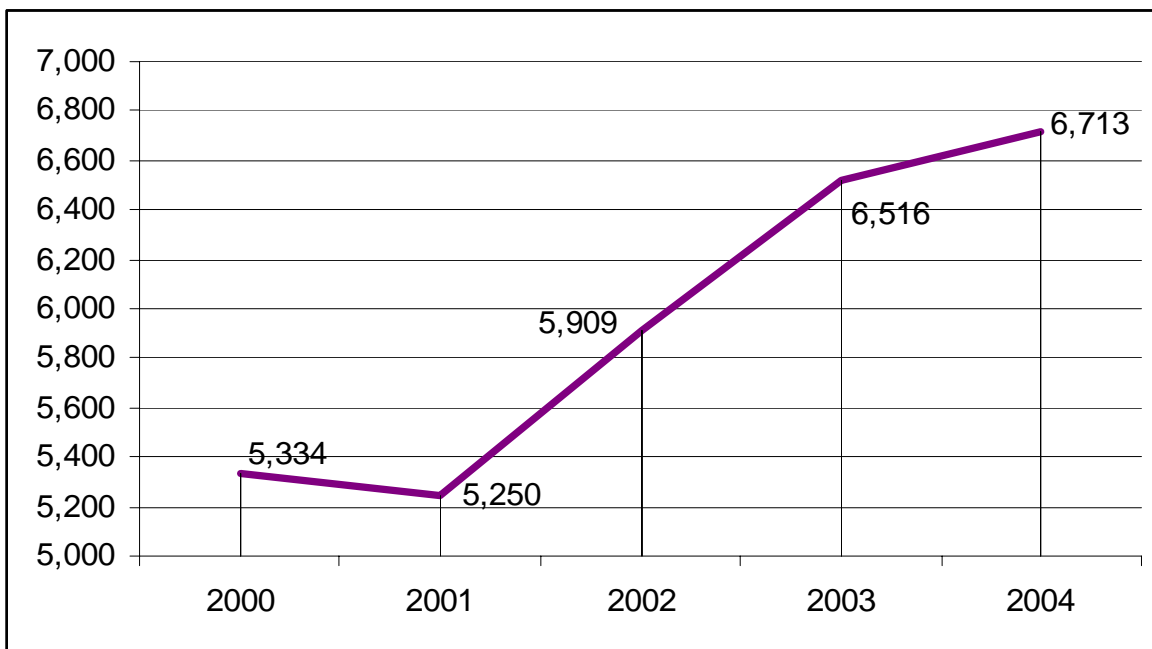
Head Count Enrollment at Joliet Junior College

2000	2001	2002	2003	2004	Increase	% change
5,334	5,250	5,909	6,516	6,713	1,379	25.9%



Full-time Equivalent Enrollment at Joliet Junior College

2000	2001	2002	2003	2004	Increase	% change
5,334	5,250	5,909	6,516	6,713	1,379	25.9%



Regional Spring 2004 Enrollment at Illinois Community Colleges

Change in Head Count Enrollment at Illinois Community Colleges, by Region*

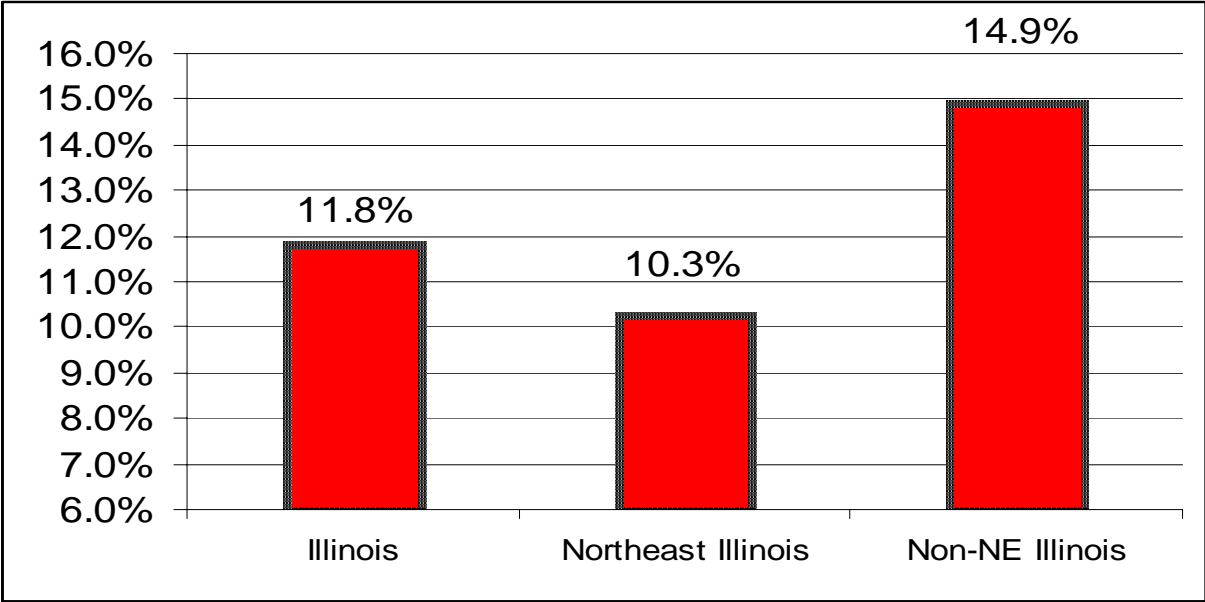
Region	2000	2001	2002	2003	2004	No. Change	% Change
Illinois Total	328,705	328,538	344,466	360,603	367,547	38,842	11.8%
Northeast Illinois	219,921	219,857	229,119	238,318	242,520	22,599	10.3%
Non-NE Illinois	108,784	108,681	115,347	122,285	125,027	16,243	14.9%

Change in FTE Enrollment at Illinois Community Colleges, by Region*

Region	2000	2001	2002	2003	2004	No. Change	% Change
Illinois Total	170,170	168,841	179,871	191,309	195,702	25,532	15.0%
Northeast Illinois	112,996	112,109	119,263	126,475	128,777	15,781	14.0%
Non-NE Illinois	57,174	56,733	60,608	64,835	66,925	9,751	17.1%

*Community colleges in the Northeast region include: Chicago City Colleges, DuPage, Elgin, Harper, Joliet, Kankakee, Kishwaukee, Lake County, McHenry, Moraine Valley, Morton, Oakton, Prairie State, Rock Valley, South Suburban, Triton, Waubensee

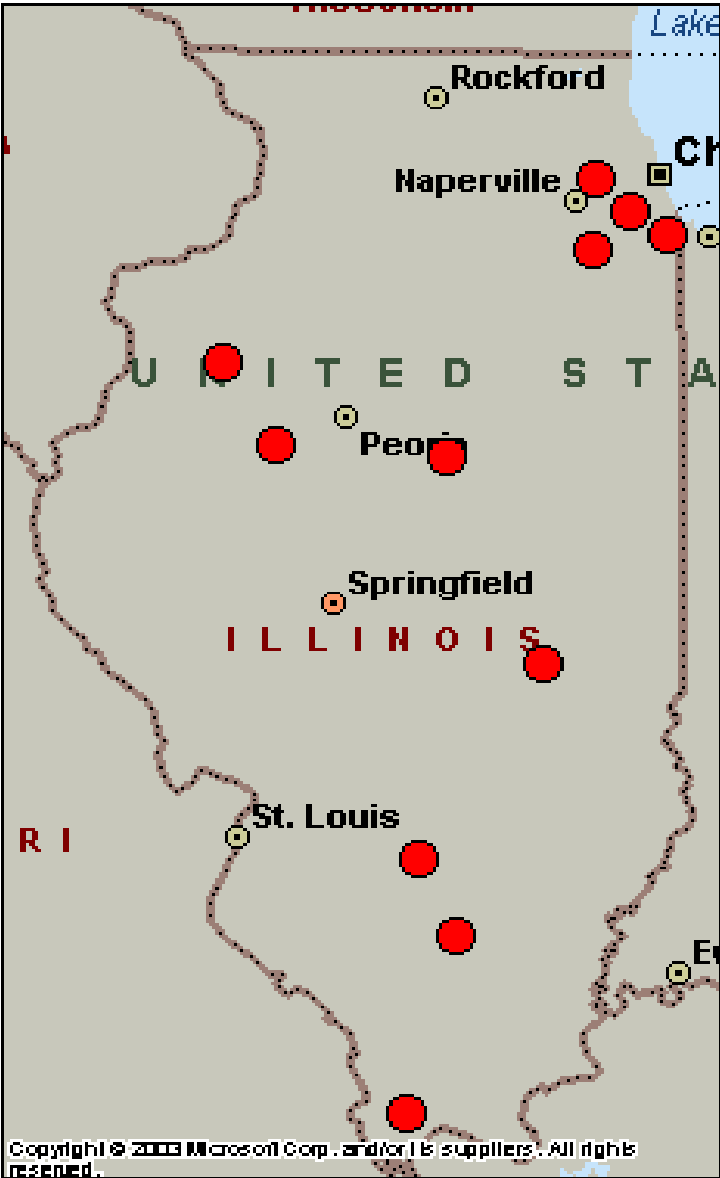
Percent Change in Head Count Enrollment at Illinois Community Colleges, by Region*



Fastest and Slowest Growing Community Colleges: Head Count Enrollment

Largest Percent Increase in Head Count Enrollment, Spring 2000-2004

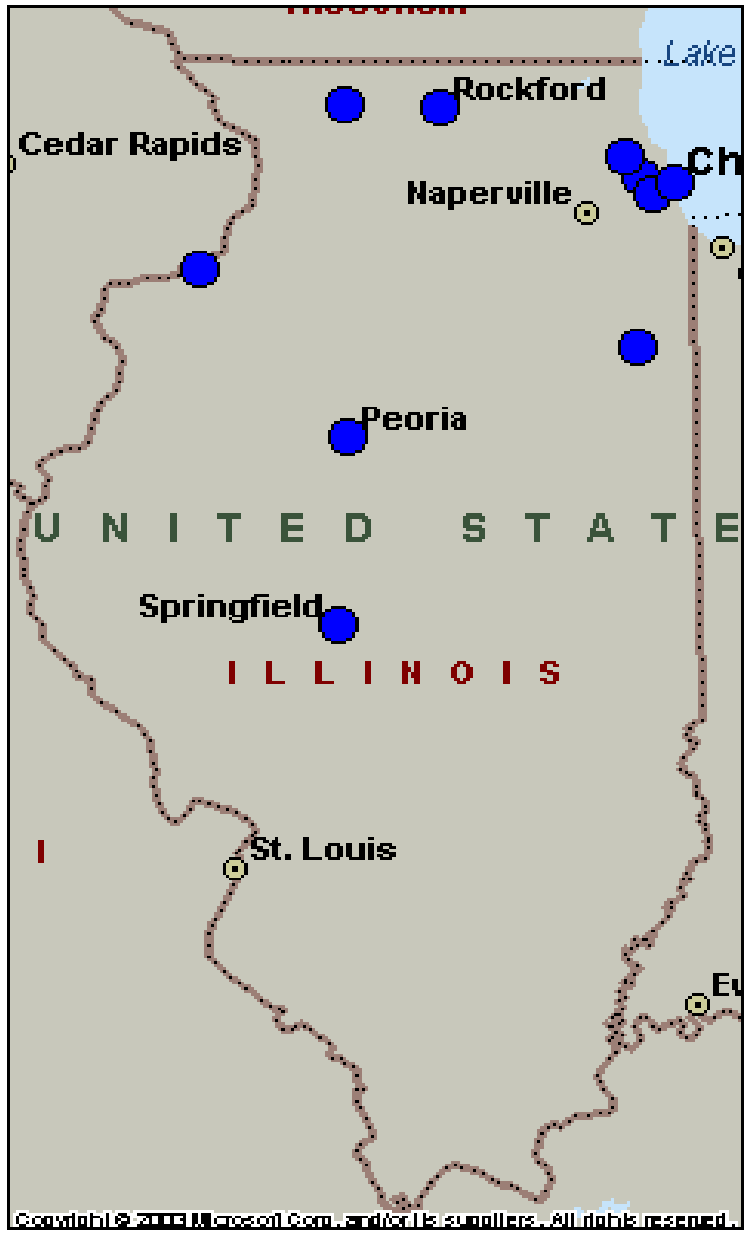
College	City	% Change
1. Kaskaskia	Centralia	113.3%
2. South Suburban	South Holland	73.4%
3. Carl Sandburg	Galesburg	45.1%
4. Rend Lake	Ina	39.5%
5. Spoon River	Canton	29.2%
6. Lake Land	Mattoon	28.2%
7. DuPage	Glen Ellyn	23.8%
8. Shawnee	Ullin	23.2%
9. Moraine Valley	Palos Hills	21.5%
10. Heartland	Normal	20.3%
11. Joliet	Joliet	20.2%



Smallest Percent Increase in Head Count Enrollment, Spring 2000-2004

College	City	% Change
1. Kankakee	Kankakee	-3.0%
2. Black Hawk	Moline	-0.3%
3. Triton	River Grove	-0.2%
4. Chicago*	Chicago	0.1%
5. Highland	Freeport	0.5%
6. Illinois Central	Peoria	1.1%
7. Rock Valley	Rockford	2.4%
8. Lincoln Land	Springfield	2.7%
9. Oakton	Des Plaines	4.1%
10. Morton	Cicero	4.5%

**Includes all Chicago City Community Colleges*



Largest Numerical Increase in Head Count Enrollment, Spring 2000-2004

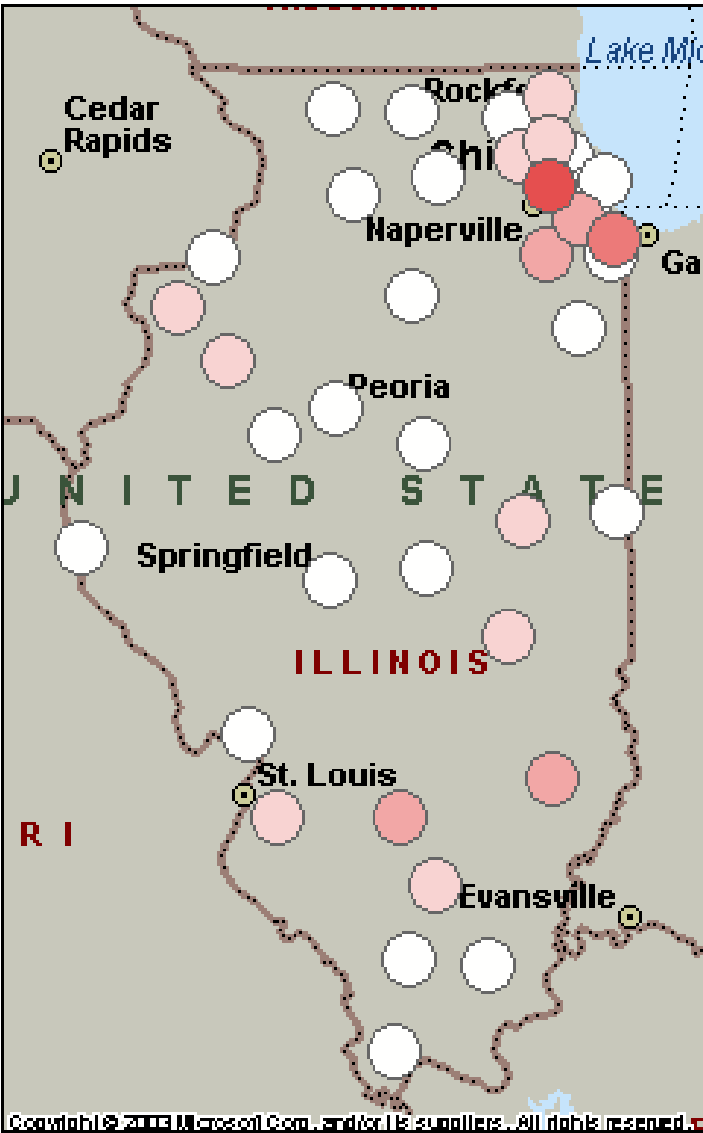
College	City	No. Change
1. DuPage	Glen Ellyn	5,952
2. South Suburban	South Holland	4,072
3. Kaskaskia	Centralia	2,926
4. Moraine Valley	Palos Hills	2,802
5. Illinois Eastern	Olney	2,189
6. Joliet	Joliet	2,124
7. Lake Land	Mattoon	1,695
8. Harper	Palatine	1,669
9. Southwestern	Belleville	1,554
10. Lake County	Grayslake	1,401

Smallest Numerical Increase in Head Count Enrollment, Spring 2000-2004

College	City	No. Change
1. Kankakee	Kankakee	-99
2. Triton	River Grove	-30
3. Black Hawk	Moline	-19
4. Highland	Freeport	13
5. Chicago*	Chicago	81
6. Illinois Central	Peoria	129
7. Southeastern	Harrisburg	134
8. Lincoln Land	Springfield	168
9. John Wood	Quincy	188
10. Rock Valley	Rockford	193

**Includes all Chicago City Community Colleges*

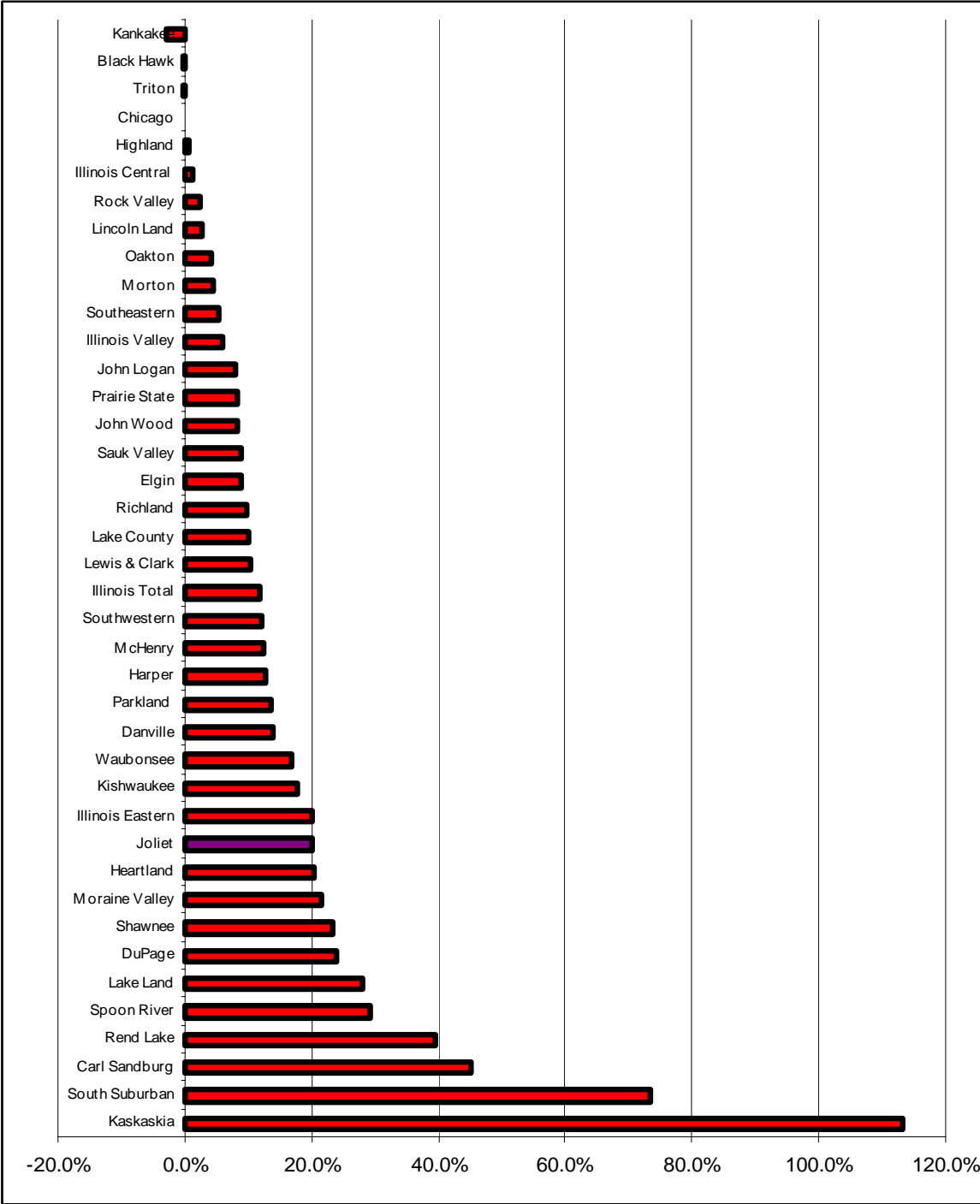
Change in Spring Headcount Enrollment at Illinois Community Colleges, Spring 2000-2004



Change in Headcount Enrollment, Spring 2000-2004

- 4,700 to 6,000
- 3,400 to 4,699
- 2,100 to 3,399
- 800 to 2,099
- 500 to 799

Percent Change in Head Count Enrollment at Illinois Community Colleges, Spring 2000-2004



Fastest and Slowest Growing Community Colleges: Full-time Equivalent Enrollment (FTE)

Largest Percent Increase in FTE Enrollment, Spring 2000-2004

College	City	% change
1. Kaskaskia	Centralia	92.6%
2. Rend Lake	Ina	42.8%
3. Heartland	Normal	31.3%
4. Waubensee	Sugar Grove	28.7%
5. South Suburban	South Holland	28.1%
6. Lake County	Grayslake	28.0%
7. Moraine Valley	Palos Hills	26.2%
8. Joliet	Joliet	25.9%
9. Morton	Cicero	24.7%
10. Lake Land	Mattoon	24.0%

Smallest Percent Increase in FTE Enrollment, Spring 2000-2004

College	City	% change
Southeastern	Harrisburg	-7.7%
Chicago*	Chicago	1.3%
John Logan	Cartersville	3.1%
Highland	Freeport	4.3%
Lincoln Land	Springfield	4.3%
Kankakee	Kankakee	5.1%
Sauk Valley	Dixon	7.6%
Black Hawk	Moline	7.9%
Shawnee	Ullin	8.2%
Triton	River Grove	9.0%

**Includes all Chicago City Community Colleges*

Largest Numerical Increase in FTE Enrollment, Spring 2000-2004

College	City	No. Change
1. DuPage	Glen Ellyn	2,239
2. Moraine Valley	Palos Hills	1,838
3. Lake County	Grayslake	1,643
4. Kaskaskia	Centralia	1,600
5. Joliet	Joliet	1,379
6. Harper	Palatine	1,302
7. Southwestern	Belleville	1,095
8. South Suburban	South Holland	1,050
9. Oakton	Des Plaines	993
10. Waubensee	Sugar Grove	877

Smallest Numerical Increase in FTE Enrollment, Spring 2000-2004

College	City	No. Change
1. Southeastern	Harrisburg	-112
2. Highland	Freeport	61
3. Kankakee	Kankakee	87
4. Sauk Valley	Dixon	100
5. Shawnee	Ullin	101
6. John Logan	Carterville	101
7. Lincoln Land	Springfield	154
8. Danville	Danville	164
9. John Wood	Quincy	216
10. Spoon River	Canton	219

Illinois Community College Full-time Equivalent (FTE) and Head Count Enrollment Trends, Spring 2000 through Spring 2004

Head Count Enrollment at All Illinois Community Colleges, Spring 2000-2004

College	City	2000	2001	2002	2003	2004	No. Change	% Change
Black Hawk	Moline	7,157	6,605	7,576	7,406	7,138	-19	-0.3%
Carl Sandburg	Galesburg	2,670	2,699	2,812	3,904	3,873	1,203	45.1%
Chicago	Chicago	64,279	63,116	65,462	66,616	64,360	81	0.1%
Danville	Danville	2,356	2,500	2,722	2,626	2,680	324	13.8%
DuPage	Glen Ellyn	25,002	25,123	27,012	27,480	30,954	5,952	23.8%
Elgin	Elgin	9,577	10,029	9,772	9,722	10,436	859	9.0%
Harper	Palatine	13,117	13,542	14,027	14,118	14,786	1,669	12.7%
Heartland	Normal	3,704	3,927	4,237	4,629	4,455	751	20.3%
Highland	Freeport	2,502	2,615	2,562	2,821	2,515	13	0.5%
Illinois Central	Peoria	11,224	10,670	11,268	11,502	11,353	129	1.1%
Illinois Eastern	Olney	10,852	10,891	11,342	12,886	13,041	2,189	20.2%
Illinois Valley	Oglesby	3,778	3,561	3,640	3,902	3,999	221	5.8%
John Logan	Carterville	5,092	5,115	5,152	5,216	5,501	409	8.0%
John Wood	Quincy	2,250	2,139	2,338	2,359	2,438	188	8.4%
Joliet	Joliet	10,516	9,323	11,102	12,102	12,640	2,124	20.2%
Kankakee	Kankakee	3,312	3,127	3,059	3,363	3,213	-99	-3.0%
Kaskaskia	Centralia	2,583	2,772	3,360	4,432	5,509	2,926	113.3%
Kishwaukee	Malta	3,325	3,509	3,629	3,818	3,911	586	17.6%
Lake County	Grayslake	13,986	14,100	15,106	15,540	15,387	1,401	10.0%
Lake Land	Mattoon	6,017	6,138	6,542	7,109	7,712	1,695	28.2%
Lewis & Clark	Godfrey	6,858	6,934	7,373	7,451	7,569	711	10.4%
Lincoln Land	Springfield	6,258	6,122	6,382	6,441	6,426	168	2.7%
McHenry	Crystal Lake	5,234	4,950	5,646	5,701	5,877	643	12.3%
Moraine Valley	Palos Hills	13,051	13,287	14,131	14,750	15,853	2,802	21.5%
Morton	Cicero	4,578	4,206	4,694	5,018	4,784	206	4.5%
Oakton	Des Plaines	12,185	12,380	11,452	12,664	12,684	499	4.1%
Parkland	Champaign	8,293	8,413	9,110	9,796	9,416	1,123	13.5%
Prairie State	Chicago Heights	5,094	5,224	4,739	5,481	5,516	422	8.3%
Rend Lake	Ina	2,692	2,751	2,821	3,605	3,756	1,064	39.5%
Richland	Decatur	3,120	3,166	3,203	3,432	3,425	305	9.8%
Rock Valley	Rockford	8,153	7,719	7,931	8,819	8,346	193	2.4%
Sauk Valley	Dixon	2,353	2,279	2,580	2,632	2,562	209	8.9%
Shawnee	Ullin	1,773	1,814	1,998	2,005	2,184	411	23.2%
South Suburban	South Holland	5,548	7,202	8,252	8,698	9,620	4,072	73.4%
Southeastern	Harrisburg	2,537	2,464	2,497	2,447	2,671	134	5.3%
Southwestern	Belleville	12,881	13,270	13,770	13,645	14,435	1,554	12.1%
Spoon River	Canton	1,834	1,836	2,062	2,039	2,369	535	29.2%
Triton	River Grove	15,673	15,183	15,007	15,939	15,643	-30	-0.2%
Waubonsee	Sugar Grove	7,291	7,837	8,098	8,489	8,510	1,219	16.7%
Illinois Total		328,705	328,538	344,466	360,603	367,547	38,842	11.8%

FTE Enrollment at All Illinois Community Colleges, Spring 2000-2004

College	City	2000	2001	2002	2003	2004	No. Change	% change
Black Hawk	Moline	3,610	3,484	3,900	3,940	3,895	285	7.9%
Carl Sandburg	Galesburg	1,530	1,550	1,668	1,784	1,792	262	17.1%
Chicago	Chicago	36,745	35,284	36,689	38,096	37,223	478	1.3%
Danville	Danville	1,424	1,422	1,522	1,582	1,588	164	11.5%
DuPage	Glen Ellyn	13,262	13,401	14,712	15,340	15,501	2,239	16.9%
Elgin	Elgin	4,412	4,532	4,714	4,729	5,146	735	16.6%
Harper	Palatine	6,666	6,751	7,150	7,493	7,968	1,302	19.5%
Heartland	Normal	1,965	2,198	2,136	2,470	2,580	615	31.3%
Highland	Freeport	1,424	1,425	1,377	1,505	1,485	61	4.3%
Illinois Central	Peoria	5,669	5,506	5,842	6,164	6,542	873	15.4%
Illinois Eastern	Olney	3,618	3,483	3,701	4,049	4,177	559	15.5%
Illinois Valley	Oglesby	2,052	1,977	2,046	2,221	2,294	242	11.8%
John Logan	Carterville	3,270	3,231	3,224	3,311	3,371	101	3.1%
John Wood	Quincy	1,280	1,217	1,339	1,417	1,496	216	16.9%
Joliet	Joliet	5,334	5,250	5,909	6,516	6,713	1,379	25.9%
Kankakee	Kankakee	1,698	1,567	1,563	1,716	1,785	87	5.1%
Kaskaskia	Centralia	1,728	1,619	2,127	2,801	3,328	1,600	92.6%
Kishwaukee	Malta	1,972	2,052	2,134	2,268	2,320	348	17.6%
Lake County	Grayslake	5,873	6,159	6,803	7,050	7,516	1,643	28.0%
Lake Land	Mattoon	3,570	3,511	3,703	4,132	4,425	855	24.0%
Lewis & Clark	Godfrey	3,019	3,064	3,310	3,439	3,607	588	19.5%
Lincoln Land	Springfield	3,544	3,322	3,555	3,604	3,698	154	4.3%
McHenry	Crystal Lake	2,459	2,431	2,698	2,863	2,976	517	21.0%
Moraine Valley	Palos Hills	7,020	7,100	7,545	8,151	8,858	1,838	26.2%
Morton	Cicero	1,772	1,795	2,007	2,187	2,210	438	24.7%
Oakton	Des Plaines	5,306	5,781	5,506	6,160	6,299	993	18.7%
Parkland	Champaign	4,823	4,715	5,178	5,751	5,673	850	17.6%
Prairie State	Chicago Heights	2,442	2,511	2,474	2,748	2,780	338	13.8%
Rend Lake	Ina	1,565	1,715	1,790	2,074	2,235	670	42.8%
Richland	Decatur	1,614	1,634	1,772	1,952	1,866	252	15.6%
Rock Valley	Rockford	3,850	3,767	4,297	4,833	4,702	852	22.1%
Sauk Valley	Dixon	1,313	1,268	1,458	1,489	1,413	100	7.6%
Shawnee	Ullin	1,233	1,238	1,375	1,361	1,334	101	8.2%
South Suburban	South Holland	3,737	3,490	4,012	4,382	4,787	1,050	28.1%
Southeastern	Harrisburg	1,449	1,438	1,385	1,416	1,337	-112	-7.7%
Southwestern	Belleville	6,400	6,623	7,040	7,197	7,495	1,095	17.1%
Spoon River	Canton	1,075	1,093	1,160	1,177	1,294	219	20.4%
Triton	River Grove	7,395	7,020	7,514	8,183	8,063	668	9.0%
Waubonsee	Sugar Grove	3,053	3,217	3,536	3,760	3,930	877	28.7%
Illinois Total		170,170	168,841	179,871	191,309	195,702	25,532	15.0%