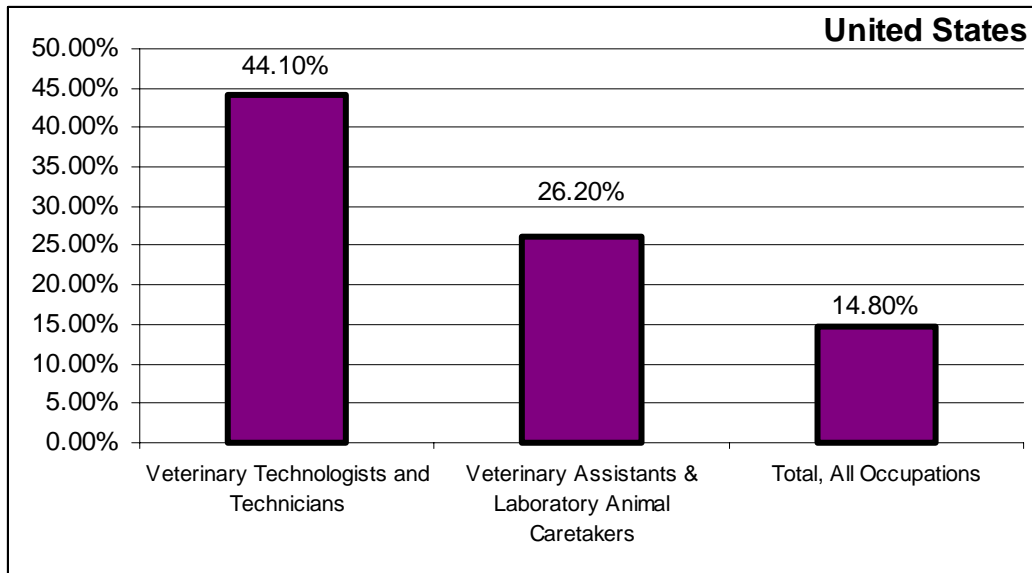


Employment Projections for Veterinary Technicians and Assistants: National, State, and Joliet Junior College District

Joliet Junior College
Office of Institutional Effectiveness
March 2004

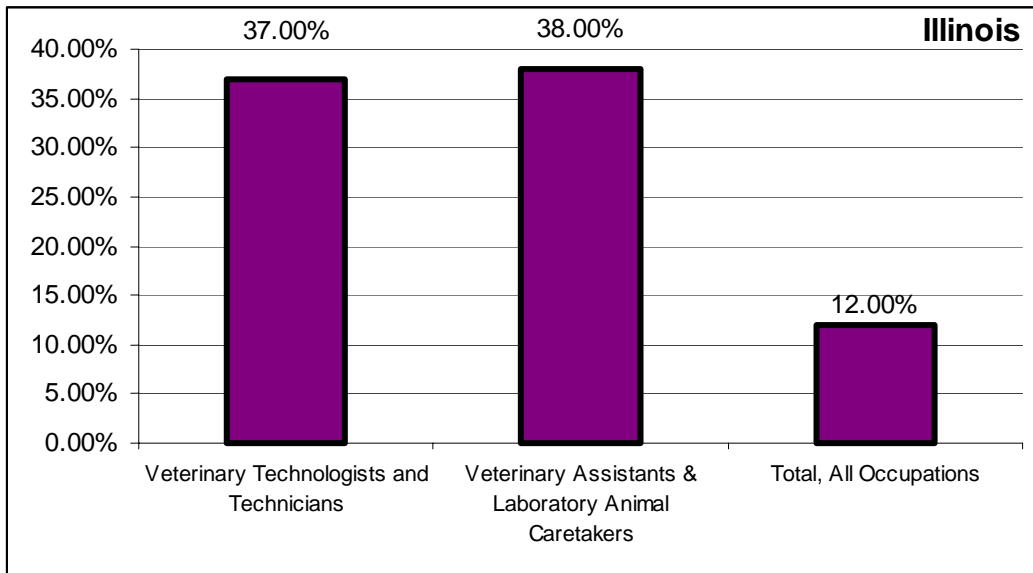
Percent Change in National Employment for Veterinary Technologists and Assistants and All Occupations to 2010



National

	Number of Employees		2000-2010 Change	
	2000	2010	Number	%
Veterinary Technologists and Technicians	52,667	75,890	23,223	44.1%
Veterinary Assistants & Laboratory Animal Caretakers	62,805	79,235	16,431	26.2%
Total, All Occupations	144,013,600	165,318,670	21,305,070	14.8%

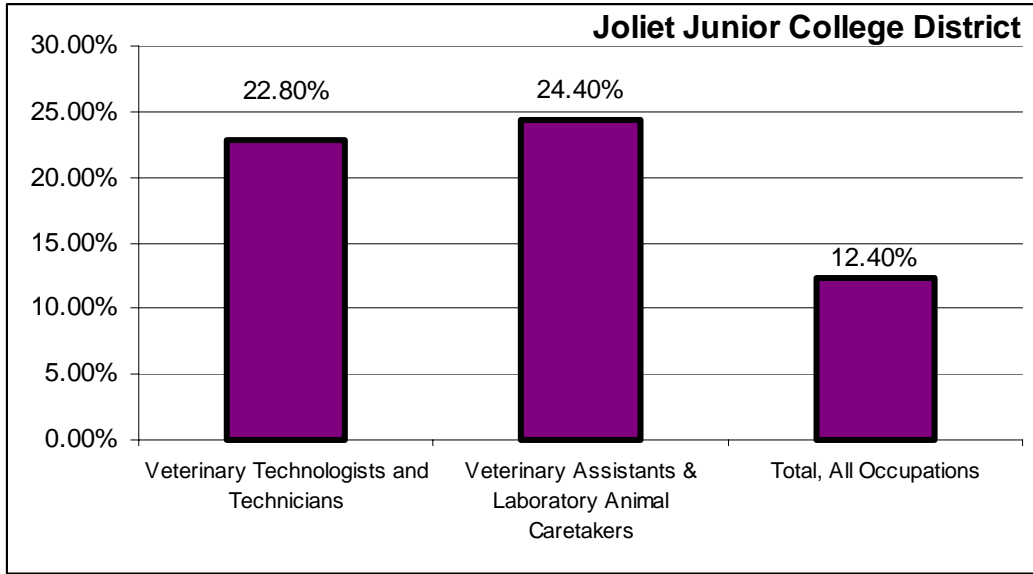
Percent Change in Illinois Employment for Veterinary Technologists and Assistants and All Occupations to 2010



State of Illinois

	Number of Employees		2000-2010 Change	
	2000	2010	Number	%
Veterinary Technologists and Technicians	1,550	2,100	550	37.0%
Veterinary Assistants & Laboratory Animal Caretakers	2,700	3,750	1,000	38.0%
Total, All Occupations	6,573,400	7,359,600	786,250	12.0%

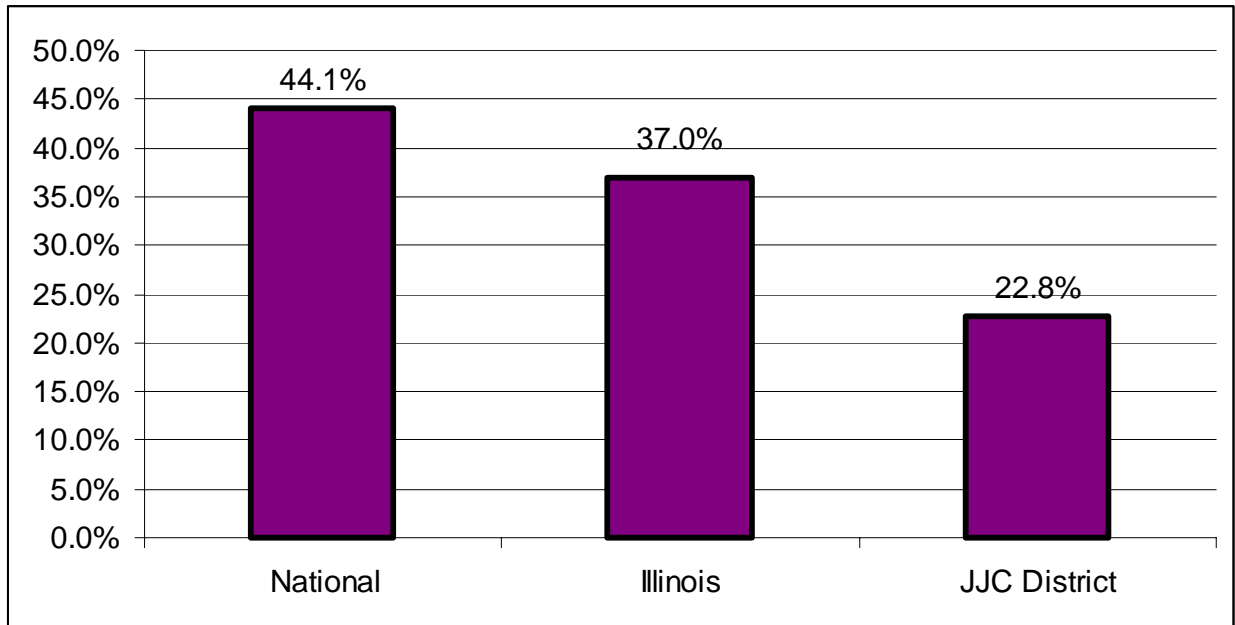
Percent Change in Joliet Junior College District Employment for Veterinary Technologists and Assistants and All Occupations to 2010



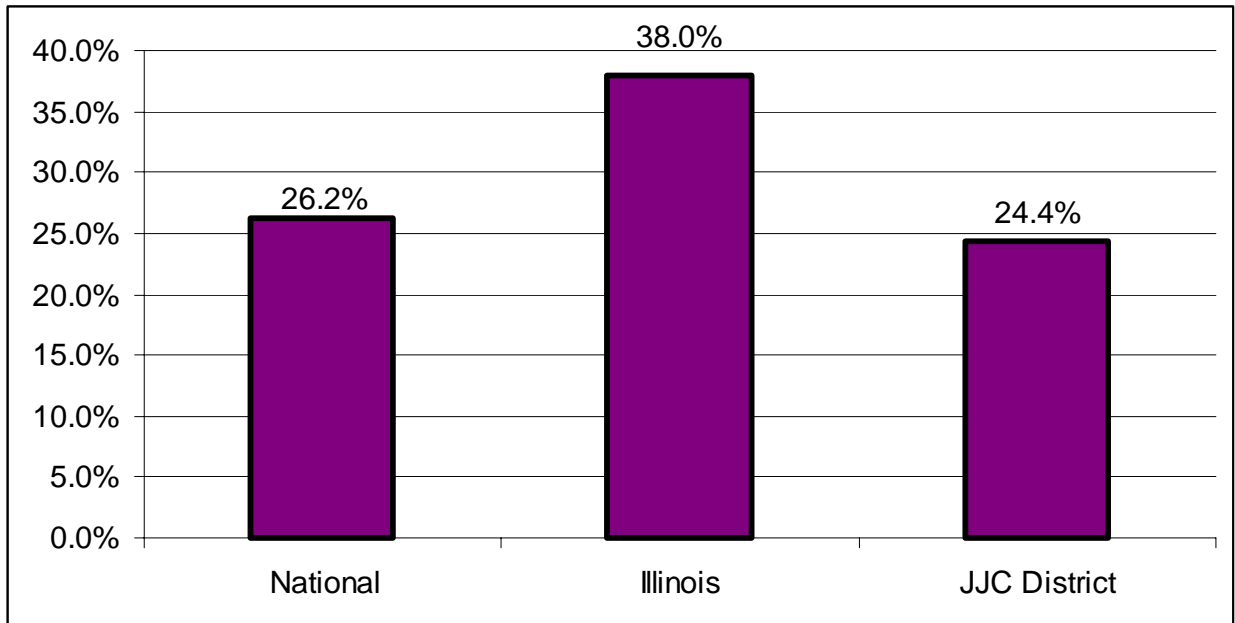
Joliet Junior College District

	Number of Employees		2000-2010 Change	
	2000	2010	Number	%
Veterinary Technologists and Technicians	114	140	26	22.8%
Veterinary Assistants & Laboratory Animal Caretakers	201	250	49	24.4%
Total, All Occupations	175,050	196,723	21,673	12.4%

Employment Comparisons for Veterinary Technologists and Technicians to 2010



Employment Comparisons for Veterinary Assistants and Laboratory Animal Caretakers to 2010



Sources

Bureau of Labor Statistics, Industry and Employment Matrix, <http://data.bls.gov/oep/niem/empiohm.jsp>

Bureau of Labor Statistics, State Occupational Projections, <http://www.projectionscentral.com/>

Illinois Department of Economic Security, Employment Projections, <http://lmi.ides.state.il.us/projections/employproj.htm>