

Unemployment Rates for the JJC District, 1996-2006

JJC Office of Institutional Effectiveness, August 2006

www.jjc.edu/admin/ie

Sheet Labor Market Data

- | | |
|---|--|
| 1 | Labor Market Participation in the JJC District, 1996-2005, with state & national comparisons |
| 2 | CHART - Labor Market Participation in the JJC District, 1996-2005, with state & national comparisons |
| 3 | CHART - Labor Market Participation in the JJC District and Illinois, by Month, 2003-2006 |
| 4 | CHART - Labor Market Participation in the JJC District and Fall Enrollment, 2001-2005 |

Jan 1996 through Dec 1999: Reflects 2000 Census-based geography and new model-based controls at the state level.

Jan 2000 through current: Reflects revised inputs, reestimation, and new statewide controls through 2005.

Unemployment rate = unemployment / labor force

Data Source: U.S. Department of Labor, Bureau of Labor Statistics, Local Area Unemployment Statistics, Web-query form.

Data is not seasonally adjusted. Over the year, the size of the Nation's labor force, the levels of employment and unemployment, and other measures of labor market activity undergo sharp fluctuations due to seasonal events including changes in weather, harvests, major holidays, and the opening and closing of schools. Because these seasonal events follow a more or less regular pattern each year, their influence on statistical trends can be eliminated by adjusting the statistics from month to month. These adjustments make it easier to observe the cyclical, long term trend and other nonseasonal movements in the series. In evaluating changes in a seasonally adjusted series, it is important to note that seasonal adjustment is an approximation and initial adjustment must be based on experience.

Unemployment Rates for the JJC District, 1996-2005*

Year	Labor Force	Employed	Unemployed	Rate
1996	248,464	235,089	13,375	5.4%
1997	253,034	240,680	12,354	4.9%
1998	260,808	249,038	11,770	4.5%
1999	274,531	262,229	12,302	4.5%
2000	299,832	287,393	12,439	4.1%
2001	310,472	294,949	15,523	5.0%
2002	316,712	297,190	19,522	6.2%
2003	329,923	308,890	21,033	6.4%
2004	345,246	324,548	20,698	6.0%
2005	345,100	325,588	19,512	5.7%

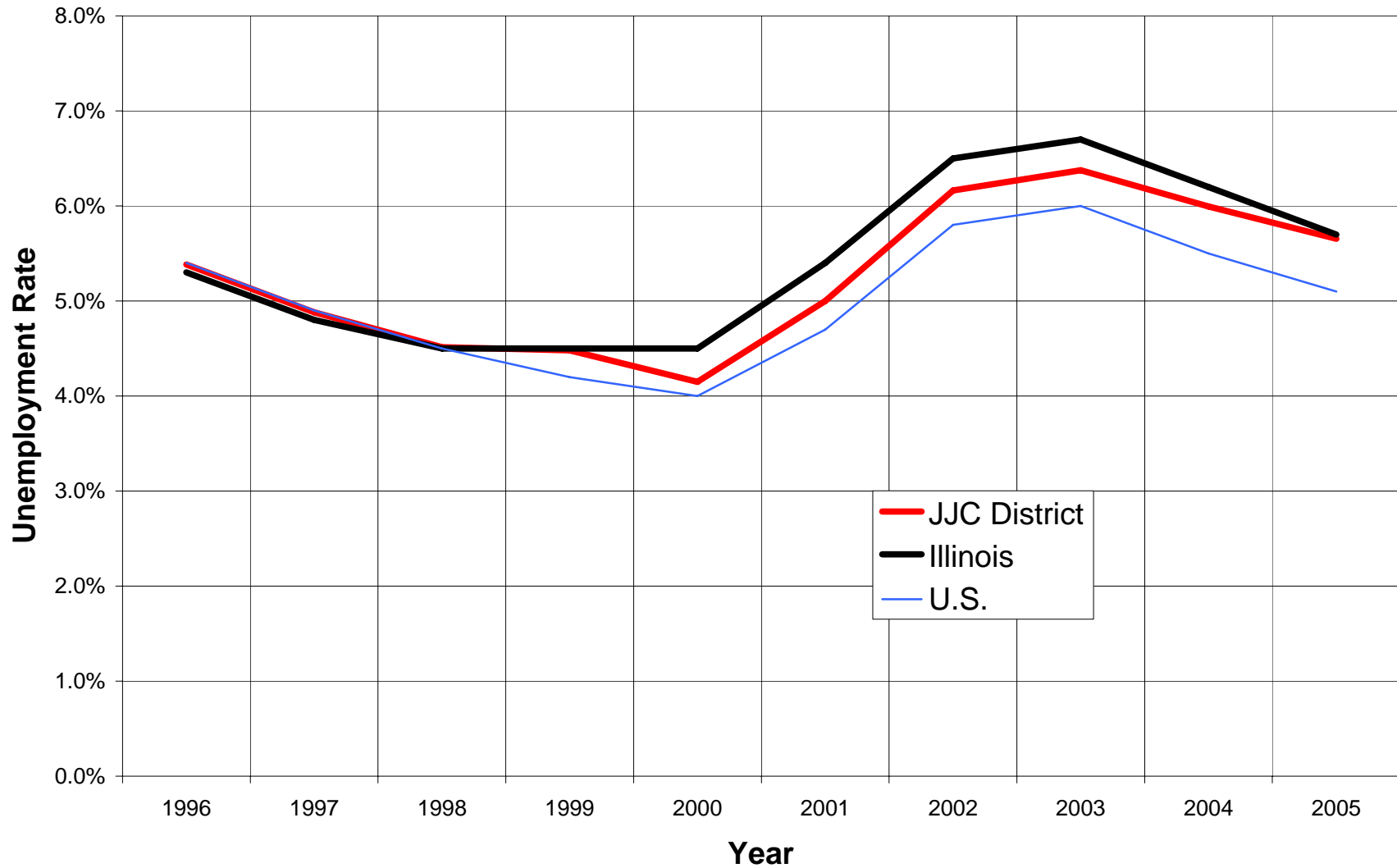
State Comparison

Year	JJC District	Illinois	U.S.
1996	5.4%	5.3%	5.4%
1997	4.9%	4.8%	4.9%
1998	4.5%	4.5%	4.5%
1999	4.5%	4.5%	4.2%
2000	4.1%	4.5%	4.0%
2001	5.0%	5.4%	4.7%
2002	6.2%	6.5%	5.8%
2003	6.4%	6.7%	6.0%
2004	6.0%	6.2%	5.5%
2005	5.7%	5.7%	5.1%

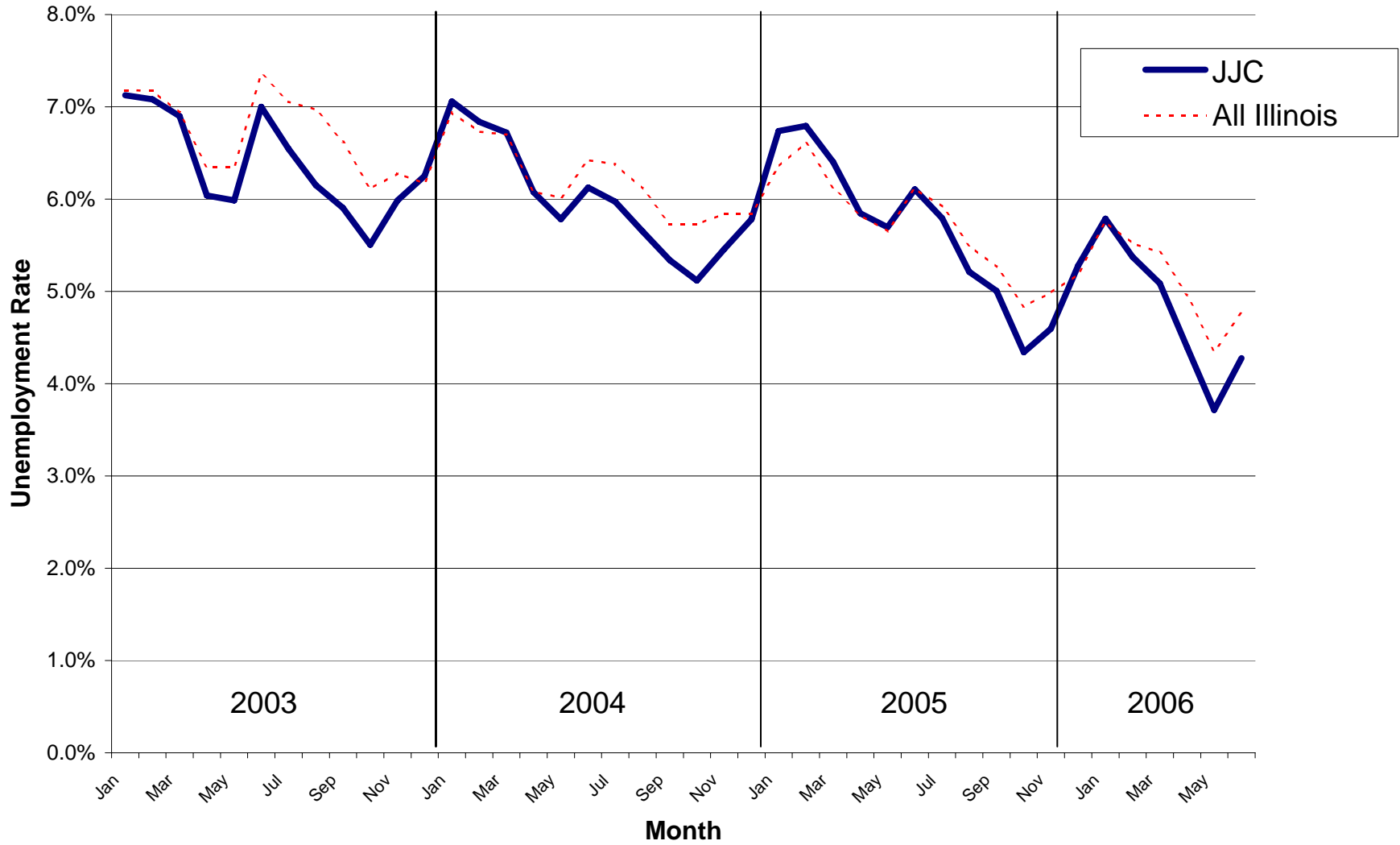
*JJC District defined as Will and Grundy Counties. Labor market numbers combined for the two counties to develop a district composite.

*As of August 2006, the most recent month reported for 2006 is June. See the last row of the individual regional spreadsheets for more information. Due to variability in labor market participation rates by month, the most recent month is not reported here.

Unemployment Rates for the JJC District, State of Illinois, and U.S.



Unemployment Rate in the JJC District by Month, 2003-2006



August Labor Market Participation and Fall Enrollment

