



Employment Projections in the Joliet Junior College District

Joliet Junior College
Office of Institutional Effectiveness
February 2004

Projected Employment Trends in Joliet Junior College

The Illinois Department of Employment Security (IDES) maintains a database on employment projections for regions in the State of Illinois. Using the IDES Query Tool, one can define employment projections for all 39 community college districts in the State of Illinois.

The IDES Query Tool can be used to make employment projections to 2010. One can make long-term (10 year) or short-term (2 year) projections. One can also choose employment projections based on industry or occupation and geographic area, including:

- State of Illinois
- Metropolitan area
- County
- Workforce investment area
- Community college district

Employment projections from IDES can be downloaded in Excel or Adobe format from the following website:

<http://lmi.ides.state.il.us/projections/employproj.htm>

More detailed industrial and occupational employment projections can also be downloaded from the Bureau of Labor Statistics (BLS) at:

<http://data.bls.gov/oep/nioem/empiohm.jsp>

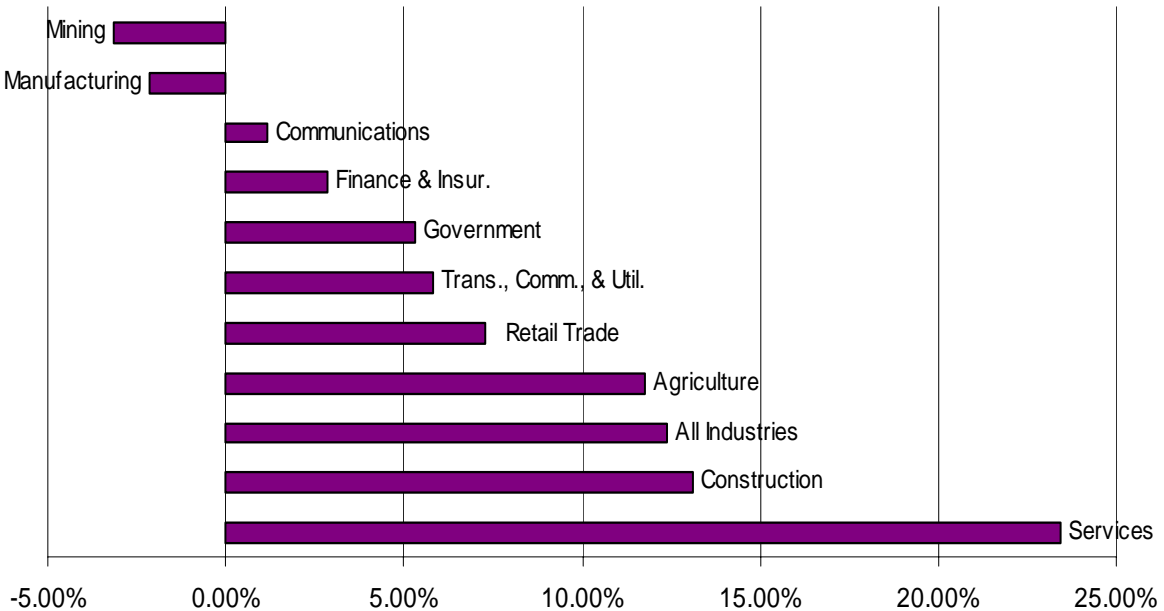
Employment Projections by Industry

As the following table and graph show, the service industry is projected to see the most dramatic growth in the Joliet Junior College district by 2010. Service sector employment includes employment areas in health care, business and finance, education and social services, engineering, and legal services.

Employment Projections by Industry in the Joliet Junior College District, 2000-2010, Summary

Industry	Employment		Employment Change	
	2000	2010	Number	Percent
Services	65,438	80,758	15,320	23.41%
Construction	14,711	16,640	1,929	13.11%
Agriculture, Forestry, & Fishing	5,277	5,898	621	11.77%
Wholesale & Retail Trade	38,983	41,822	2,839	7.28%
Transportation, Communications, & Utilities	12,983	13,738	754	5.81%
Government	10,240	10,782	542	5.29%
Finance, Insurance, & Real Estate	5,122	5,267	145	2.83%
Communications & Utilities	5,550	5,616	66	1.19%
Manufacturing	21,950	21,481	-469	-2.14%
Mining	347	336	-11	-3.17%
Total, All Industries	175,050	196,721	21,671	12.38%

Employment Projections by Industry in the Joliet Junior College District, 2000-2010, Summary



Employment Projections by Occupation

As the following table shows, the fastest growing occupational areas in the Joliet Junior College district are projected to be the following:

- Engineering
- Computers
- Social and Human Services
- Health Care

25 Fastest Growing Occupational Areas in the Joliet Junior College District, 2000-2010

Occupational Area	2000 Employees	2010 Projected	% Growth
1. Computer Software Engineers, Applications	376	713	89.63
2. Computer Software Engineers	516	949	83.91
3. Network Systems and Data Communications Analysts	77	138	79.22
4. Computer Support Specialists	459	799	74.07
5. Network and Computer Systems Administrators	209	363	73.68
6. Computer Software Engineers, Systems Software	140	236	68.57
7. Database Administrators	105	164	56.19
8. Medical Assistants	205	320	56.10
9. Computer Specialists	2,729	4,198	53.83
10. Computer and Mathematical Occupations	2,781	4,258	53.11
11. Personal and Home Care Aides	179	270	50.84
12. Medical Records and Health Information Technicians	138	208	50.72
13. Occupational & Physical Therapist Assistants & Aides	106	159	50.00
14. Home Health Aides	262	389	48.47
15. Social and Human Service Assistants	227	336	48.02
16. Computer Systems Analysts	555	815	46.85
17. Speech-Language Pathologists	141	203	43.97
18. Special Ed Tchrs, Preschool, Kindergarten, & Elem Sch	326	469	43.87
19. Miscellaneous Computer Specialists	257	363	41.25
20. Miscellaneous Community & Social Service Specialists	339	469	38.35
21. Special Education Teachers	625	863	38.08
22. Pharmacy Technicians	246	339	37.80
23. Dental Assistants	265	364	37.36
24. Dental Hygienists	166	228	37.35
25. Computer and Information Systems Managers	284	388	36.62

By contrast, the slowest growing occupations in the Joliet Junior College district require low skills and little, if any, postsecondary education. These include occupations in the following areas:

- Railroads
- Manufacturing
- Outdated communication and technological occupations (tellers, telephone technicians, clerks, etc.)
- Factory workers

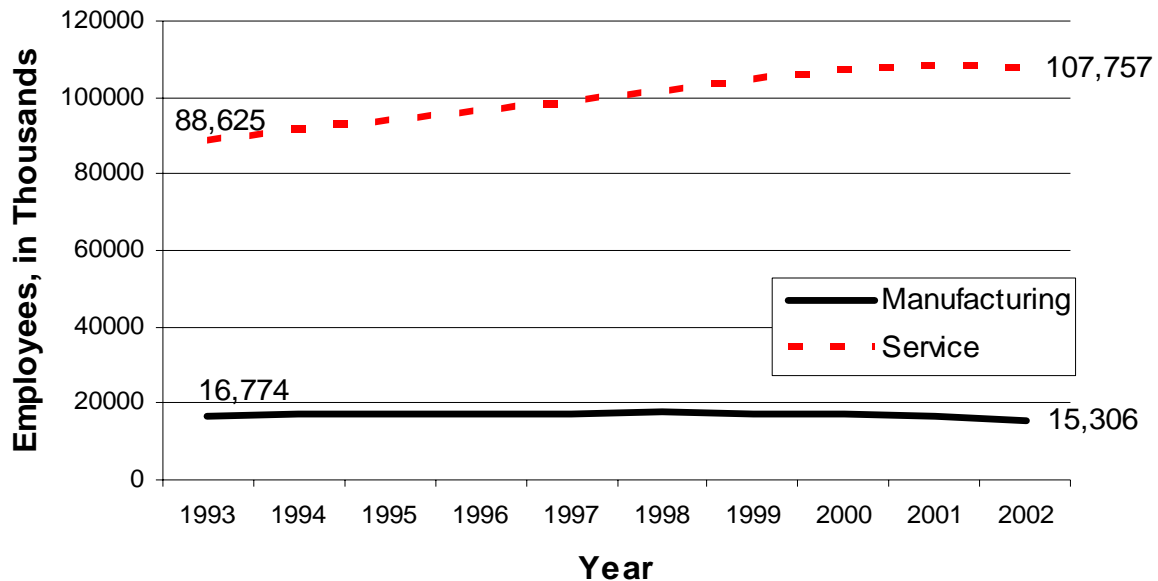
25 Slowest Growing Occupational Areas in the Joliet Junior College District, 2000-2010

Occupational Area	2000 Employees	2010 Projected	% Growth
1. Railroad Brake, Signal, and Switch Operators	112	51	-54.46
2. Telephone Operators	55	29	-47.27
3. Meter Readers, Utilities	149	96	-35.57
4. Loan Interviewers and Clerks	123	85	-30.89
5. Office Machine Operators, Except Computer	62	46	-25.81
6. Communications Equipment Operators	318	238	-25.16
7. Rail-Track Laying and Maintenance Equipment Operators	50	38	-24.00
8. Paper Goods Machine Setters, Operators, and Tenders	270	206	-23.70
9. Prepress Technicians and Workers	102	79	-22.55
10. Insurance Claims and Policy Processing Clerks	143	113	-20.98
11. Computer Operators	202	161	-20.30
12. Word Processors and Typists	240	192	-20.00
13. Switchboard Operators, Including Answering Service	226	184	-18.58
13. Milling, Machinery, Metals, & Plastics	46	38	-17.39
14. Service Station Attendants	176	148	-15.91
15. Order Clerks	470	402	-14.47
16. Machine Feeders and Offbearers	166	142	-14.46
17. Electrical and Electronic Equipment Assemblers	218	188	-13.76
18. Dishwashers	662	572	-13.60
18. Derrick, Rotary Drill, & Service Unit Ops, Oil, Gas, and Mining	15	13	-13.33
19. Cementing and Gluing Machine Operators and Tenders	30	26	-13.33
20. Eligibility Interviewers, Government Programs	151	132	-12.58
21. Rail Car Repairers	56	49	-12.50
22. Signal and Track Switch Repairers	24	21	-12.50
23. Tellers	420	368	-12.38
24. Pumping Station Operators	49	43	-12.24
25. Rolling Machine Setters, Operators, & Tenders, Metal & Plastic	161	142	-11.80

Discussion

During the 1980's and 1990's, the State of Illinois and the nation lost a significant number of manufacturing jobs. As the following table shows, the manufacturing sector lost more jobs in the past 10 years than the service sector.

Percent Change in Number of Employees in the United States, 1993-2003



Source: Bureau of Labor Statistics. (2004). *Data file*. Available On-line: <http://www.bls.gov>

People who work in the manufacturing sector also saw significant losses in income when compared to other sectors. According to the Bureau of Labor Statistics (BLS), the average 2002 annual personal income in manufacturing was \$29,690. Adjusted for inflation, the annual personal income in manufacturing in 1999 was \$29,766, meaning those who currently work in manufacturing are generally earning less income.

Individual economic growth is highly correlated with regional economic prosperity. And as projections show, nearly all high growth occupational areas will require a postsecondary education. Regional economic growth and stability, then, depends on its investments in and collaboration with higher education.

This is particularly important in the Joliet Junior College district and Will County, which has historically based its economy on manufacturing. According to the Will County Workforce Investment Board, about 27% of people work in construction and manufacturing, compared to about 20% in the Chicago metropolitan area.

Will County also lags behind the metropolitan area in the number of people who work in high growth employment sectors that require a postsecondary education, like business

and finance, professional and technical services, and information services. As the Will County Workforce Investment Board notes, “many of the fastest growing jobs in Will County are relatively low wage and low skill.”

In order to remain competitive in the 21st century economy, every region will need to invest in its residents through higher education. The evidence is clear:

- Research shows for every \$1 in tax dollars a district invests in a community college, it gets \$1.60 in return (Leslie & Brinkman, 1988).
- Community college graduates can expect to earn about \$350,000 more over the course of their lifetime than high school graduates (U.S. Census Bureau, 2004).
- Those with postsecondary educations are less likely to engage in activities that cost taxpayers: crime, welfare, unemployment, prisons, social services, health care costs, and use of tobacco, to name a few (Illinois Community College Trustees Association, 2002; Mortensen, 1999).

Clearly, community colleges are investments tax payers make in the economic development of their region. Districts that do not recognize the role of higher education in economic development will find it much more difficult to compete for the best workers in high growth areas.

Summary

- High growth jobs in the Joliet Junior College district are projected to be in the service industry, particularly health care, social services, and computer technologies.
- Because of significant growth in Will County, construction is also projected to be a high growth occupational area.
- Mirroring national trends, employment projections for manufacturing are bleak.
- In light of employment projections, Joliet Junior College’s potential roles include:
 - A focus on health care and computer science related fields.
 - Further development of transfer-related courses leading to a bachelor’s degree, particularly in health care, business and financial services, and social services.
 - Skill development in the manufacturing sector through contract training and local economic planning initiatives.
 - Small business assistance and incubation.

Sources

Bureau of Labor Statistics. (2004). *Data files*. Available on-line: <http://www.bls.gov>

Illinois Community College Trustees Association. (2002, June). *The socioeconomic benefits generated by 39 community college districts in illinois*. Springfield, IL: Author.

Illinois Department of Employment Security. (2004). *Data files*. Available on-line: <http://mi.ides.state.il.us/projections/employproj.htm>

Leslie, L., & Brinkman, D. (1988). *The economic value of higher education*. New York: MacMillan.

Mortensen, T. (1999). Private correlates of educational attainment. *Postsecondary Opportunity*. On-line: <http://www.postsecondary.org/home/default.asp>

U.S. Census Bureau. (2004). *Income: Data files*. On-line: <http://www.census.gov/hhes/www/income.html>

Workforce Investment Board of Will County. (2003). *State of the workforce*. Joliet, IL: Author.

Appendix A. Counties in the Joliet Junior College district

- Cook
- Grundy
- Kankakee
- Kendall
- LaSalle
- Livingston
- Will

Appendix B. Major cities in the Joliet Junior College district

- Bollingbrook, Will County
- Braceville, Grundy County
- Braidwood, Will County
- Channahon, Grundy and Will Counties
- Crest Hill, Will County
- Dwight, Livingston County
- East Brooklyn, Grundy County
- Elwood, Will County
- Frankfort, Will County
- Gardner, Grundy County
- Joliet, Will County
- Kinsman, Grundy County
- Lisbort, Kendall County
- Manhattan, Will County
- Mazon, Grundy County
- Minooka, Grundy County
- Mokena, Will County
- Naperville, Will County
- Newark, Kendall County
- New Lenox, Will County
- Lockport, Will County
- Odell, Livingston County
- Plainfield, Will County
- Peotone, Will County
- Romeoville, Will County
- Shorewood, Will County
- South Wilmington, Grundy County
- Verona, Grundy County
- Wilmington, Will County
- Woodridge, Will County

Appendix C. Employment Projections by Industry in the Joliet Junior College District, 2000-2010 (table 1)

Industry	Employment		Employment Change	
	2000	2010	Number	Percent
Total, All Industries	175,050	196,721	21,671	12.38%
Agriculture, Forestry, & Fishing	5,277	5,898	621	11.77%
Agricultural Production	2,475	2,414	-61	-2.46%
Agricultural Services	2,802	3,484	682	24.34%
Mining	347	336	-11	-3.17%
Crude Petroleum & Natural Gas	64	60	-5	-7.81%
Nonmetallic Mining & Quarrying	282	276	-6	-2.13%
Construction	14,711	16,640	1,929	13.11%
General Building Contractors	2,369	2,699	330	13.93%
General Contractors, Exc Bldg	1,195	1,249	54	4.52%
Special Trade Contractors	11,147	12,692	1,545	13.86%
Manufacturing	21,950	21,481	-469	-2.14%
Durable Goods Manufacturing	10,811	10,879	68	0.63%
Lumber & Wood Products	946	967	21	2.22%
Furniture & Fixtures	165	177	12	7.27%
Stone, Clay, & Glass	743	814	71	9.56%
Primary Metal Industries	560	507	-53	-9.46%
Fabricated Metal Products	1,852	1,871	19	1.03%
Machinery, Ex Electrical	4,216	4,179	-37	-0.88%
Elec. Mach., Equipmnt, & Supp	1,441	1,459	18	1.25%
Transp. Equip	514	536	22	4.28%
Professional, Scient Instr	114	115	1	0.88%
Misc Mfg Ind	260	254	-6	-2.31%
Nondurable Goods Manufacturing	11,139	10,602	-537	-4.82%
Food & Kindred Prod	1,109	1,270	161	14.52%
Textile Mill Products	82	62	-20	-24.39%
Apparel & Textile Products	76	67	-9	-11.84%
Paper & Allied Products	1,489	1,130	-359	-24.11%
Printing & Publishing Industries	1,567	1,489	-78	-4.98%
Chemicals & Allied Products	3,176	3,103	-73	-2.30%
Petroleum & Coal Products	1,543	1,363	-180	-11.67%
Rubber & Misc Plastics Products	2,097	2,117	20	0.95%
Transportation, Communications, & Utilities	12,983	13,738	754	5.81%
Transportation	7,433	8,122	689	9.27%
Railroad Transportation	1,121	984	-137	-12.22%
Local & Interurban Transit	1,288	1,612	324	25.16%
Trucking & Warehousing	3,501	3,960	459	13.11%
U.S. Postal Service	816	813	-4	-0.49%
Water Transportation	65	66	1	1.54%
Pipe Lines, Except Natural Gas	54	46	-8	-14.81%
Transportation Services	567	618	51	8.99%
Communications & Utilities	5,550	5,616	66	1.19%
Communications	812	856	44	5.42%
Utilities & Sanitary Services	4,738	4,760	22	0.46%

Appendix C. Employment Projections by Industry in the Joliet Junior College District, 2000-2010 (table 2)

Industry	Employment		Employment Change	
	2000	2010	Number	Percent
Wholesale & Retail Trade	38,983	41,822	2,839	7.28%
Wholesale Trade	8,177	8,616	439	5.37%
Wholesale Trade, Durable Goods	6,029	6,421	392	6.50%
Wholesale Trade, Nondurable Goods	2,148	2,195	47	2.19%
Retail Trade	30,806	33,206	2,400	7.79%
Bldg. Mat.,Garden Sup.,Mobile Homes	1,903	2,035	132	6.94%
Retail Trade, General Merchandise	3,929	4,108	179	4.56%
Food Stores	4,903	5,385	482	9.83%
Automobile & Recreational Vehicles	3,790	3,941	151	3.98%
Apparel & Accessories Stores	659	609	-50	-7.59%
Furniture & Home Furnishings Stores	1,440	1,601	161	11.18%
Eating & Drinking Places	10,395	11,140	745	7.17%
Miscellaneous Retail Stores	3,787	4,387	600	15.84%
Finance, Insurance, & Real Estate	5,122	5,267	145	2.83%
Depository Institutions	2,314	2,287	-27	-1.17%
Nondepository Institutions	200	222	22	11.00%
Security & Commodity Brokers,Dealers	114	124	10	8.77%
Insurance Carriers	958	991	33	3.44%
Insurance Agents & Brokers	592	620	28	4.73%
Real Estate	874	958	84	9.61%
Holding & Other Investment Offices	71	65	-6	-8.45%
Services	65,438	80,758	15,320	23.41%
Hotels & Other Lodging Places	728	770	42	5.77%
Personal Services	1,547	1,705	158	10.21%
Miscellaneous Business Services	10,283	15,425	5,142	50.00%
Automobile Repair,Services,Garages	2,051	2,370	319	15.55%
Misc Repair Services	757	844	87	11.49%
Motion Pictures	703	734	30	4.27%
Amuse & Rec.,Exc Motion Pic	5,681	6,845	1,164	20.49%
Health Services	11,229	14,015	2,786	24.81%
Legal Services	552	616	64	11.59%
Educational Services	17,121	20,689	3,568	20.84%
Social Services	2,195	2,921	726	33.08%
Membership Organizations	2,745	3,065	320	11.66%
Engineering, Acctg., & Mgmt. Services	2,093	2,935	842	40.23%
Private Households, Self-Employed, Unpaid	7,751	7,824	73	0.94%
Private Households	388	283	-105	-27.06%
Self-Employed Workers	7,247	7,428	181	2.50%
Unpaid Family Workers	116	113	-3	-2.59%
Government	10,240	10,782	542	5.29%
Federal Government	311	292	-19	-6.11%
State Government,Exc.Ed. & Hosp.	2,624	2,879	255	9.72%
Local Government,Exc.Ed. & Hosp.	7,305	7,611	306	4.19%

Appendix D. Employment Projections by Occupation in the Joliet Junior College District, 2000-2010 (table 1)

Occupational Area	Employees	Projected	2000-10 Change	
	2000	2010	Number	Percent
Total, All Occupations	175,050	196,723	21,673	12.38
Computer Software Engineers, Applications	376	713	337	89.63
Computer Software Engineers	516	949	433	83.91
Network Systems and Data Communications Analysts	77	138	61	79.22
Computer Support Specialists	459	799	340	74.07
Network and Computer Systems Administrators	209	363	154	73.68
Textile Bleaching and Dyeing Machine Operators	7	12	5	71.43
Computer Software Engineers, Systems Software	140	236	96	68.57
Physician Assistants	13	21	8	61.54
Desktop Publishers	38	60	22	57.89
Occupational Therapist Aides	7	11	4	57.14
Database Administrators	105	164	59	56.19
Medical Assistants	205	320	115	56.10
Audiologists	13	20	7	53.85
Computer Specialists	2,729	4,198	1,469	53.83
Computer and Mathematical Occupations	2,781	4,258	1,477	53.11
Physical Therapist Assistants	57	86	29	50.88
Personal and Home Care Aides	179	270	91	50.84
Medical Records and Health Information Technicians	138	208	70	50.72
Physical Therapist Assistants and Aides	85	128	43	50.59
Occupational and Physical Therapist Assistants and Aides	106	159	53	50.00
Physical Therapist Aides	28	42	14	50.00
All Other Air Transportation Workers	10	15	5	50.00
Home Health Aides	262	389	127	48.47
Social and Human Service Assistants	227	336	109	48.02
Occupational Therapist Assistants and Aides	21	31	10	47.62
Computer Systems Analysts	555	815	260	46.85
Speech-Language Pathologists	141	203	62	43.97
Special Ed Tchrs, Preschool, Kindergarten, & Elem Sch	326	469	143	43.87
Marriage and Family Therapists	7	10	3	42.86
Geography Faculty	7	10	3	42.86
Occupational Therapist Assistants	14	20	6	42.86
Computer Specialists, All Other	257	363	106	41.25
Environmental Engineering Technicians	10	14	4	40.00
Microbiologists	15	21	6	40.00
Forest and Conservation Technicians	5	7	2	40.00
Criminal Justice & Law Enforcement Faculty	10	14	4	40.00
Models	10	14	4	40.00
Mental Health and Substance Abuse Social Workers	71	99	28	39.44
Septic Tank Servicers and Sewer Pipe Cleaners	36	50	14	38.89
Atmospheric, Earth, Marine, & Space Sciences Faculty	13	18	5	38.46
Miscellaneous Community and Social Service Specialists	339	469	130	38.35

Appendix D. Employment Projections by Occupation in the Joliet Junior College District, 2000-2010 (table 2)

Occupational Area	Employees	Projected	2000-10 Change	
	2000	2010	Number	Percent
Ambulance Drivers and Attendants, Except Emergency	68	94	26	38.24
Special Education Teachers	625	863	238	38.08
Pharmacy Technicians	246	339	93	37.80
Survey Researchers	8	11	3	37.50
Sound Engineering Technicians	8	11	3	37.50
Pest Control Workers	8	11	3	37.50
Dental Assistants	265	364	99	37.36
Dental Hygienists	166	228	62	37.35
Occupational Therapists	94	129	35	37.23
Recreation and Fitness Studies Faculty	19	26	7	36.84
Computer and Information Systems Managers	284	388	104	36.62
Health Diagnosing and Treating Practitioners, All Other	268	366	98	36.57
Architecture Faculty	11	15	4	36.36
Hazardous Materials Removal Workers	176	240	64	36.36
Therapists	492	670	178	36.18
Gaming Managers	14	19	5	35.71
Sociology Faculty	14	19	5	35.71
Aircraft Cargo Handling Supervisors	14	19	5	35.71
Substance Abuse and Behavioral Disorder Counselors	48	65	17	35.42
Anthropology and Archeology Faculty	17	23	6	35.29
Library Science Faculty	20	27	7	35.00
History Faculty	20	27	7	35.00
Respiratory Therapists	81	109	28	34.57
Social Sciences Faculty	143	192	49	34.27
Economics Faculty	38	51	13	34.21
Cardiovascular Technologists and Technicians	50	67	17	34.00
Interviewers, Except Eligibility and Loan	62	83	21	33.87
Physical Therapists	113	151	38	33.63
Fitness Trainers and Aerobics Instructors	281	375	94	33.45
Public Relations Managers	66	88	22	33.33
Architects, Surveyors, & Cartographers, All Other	6	8	2	33.33
Physical Sciences Faculty	87	116	29	33.33
Physics Faculty	33	44	11	33.33
Area, Ethnic, and Cultural Studies Faculty	6	8	2	33.33
Psychology Faculty	39	52	13	33.33
Law, Criminal Justice, and Social Work Faculty	36	48	12	33.33
Social Work Faculty	6	8	2	33.33
Communications Faculty	27	36	9	33.33
Philosophy and Religion Faculty	24	32	8	33.33
Surgical Technologists	57	76	19	33.33
Gaming Dealers	168	224	56	33.33
Gaming Change Persons and Booth Cashiers	87	116	29	33.33
Engineering and Architecture Faculty	73	97	24	32.88

Appendix D. Employment Projections by Occupation in the Joliet Junior College District, 2000-2010 (table 3)

Occupational Area	Employees	Projected	2000-10 Change	
	2000	2010	Number	Percent
Biological Science Faculty	153	203	50	32.68
Tax Preparers	49	65	16	32.65
Life Sciences Faculty	173	229	56	32.37
Engineering Faculty	62	82	20	32.26
Respiratory Therapy Technicians	31	41	10	32.26
Foreign Language and Literature Faculty	28	37	9	32.14
Education and Library Science Faculty	75	99	24	32.00
Miscellaneous Healthcare Support Occupations	1,158	1,528	370	31.95
Other Healthcare Support Occupations	1,190	1,569	379	31.85
Arts, Communications, and Humanities Faculty	311	410	99	31.83
Computer Science Faculty	44	58	14	31.82
Political Science Faculty	22	29	7	31.82
Special Education Teachers, Secondary School	151	199	48	31.79
Special Education Teachers, Middle School	148	195	47	31.76
Faculty and Postsecondary Teachers	2,155	2,839	684	31.74
Chemistry Faculty	38	50	12	31.58
Math and Computer Faculty	105	138	33	31.43
Art, Drama, and Music Faculty	140	184	44	31.43
Business Faculty	121	159	38	31.40
Faculty, All Other	383	503	120	31.33
Security Guards	974	1,279	305	31.31
Education Administrators, Preschool & Child Care	64	84	20	31.25
Umpires, Referees, and Other Sports Officials	16	21	5	31.25
Miscellaneous Postsecondary Teachers and Faculty	865	1,135	270	31.21
Mathematical Science Faculty	61	80	19	31.15
Graduate Teaching Assistants	387	507	120	31.01
Education Faculty	55	72	17	30.91
Correctional Officers and Jailers	440	576	136	30.91
Advertising and Promotions Managers	130	170	40	30.77
Home Economics Faculty	13	17	4	30.77
Pediatricians, General	13	17	4	30.77
Medical Transcriptionists	98	128	30	30.61
English Language and Literature Faculty	72	94	22	30.56
Nursing Instructors and Faculty	46	60	14	30.43
Medical and Health Services Managers	194	253	59	30.41
Diagnostic Medical Sonographers	33	43	10	30.30
Bailiffs, Correctional Officers, and Jailers	453	590	137	30.24
Surgeons	43	56	13	30.23
Vocational Education Faculty	63	82	19	30.16
Health Faculty	166	216	50	30.12
Healthcare Support Occupations	2,770	3,604	834	30.11
Security Guards and Gaming Surveillance Officers	1,079	1,403	324	30.03
Agricultural Sciences Faculty	20	26	6	30.00

Appendix D. Employment Projections by Occupation in the Joliet Junior College District, 2000-2010 (table 4)

Occupational Area	Employees	Projected	2000-10 Change	
	2000	2010	Number	Percent
Health Specialties Faculty	120	156	36	30.00
Law Faculty	20	26	6	30.00
Instructional Coordinators	110	143	33	30.00
Dietetic Technicians	30	39	9	30.00
Multi-Media Artists and Animators	87	113	26	29.89
Film and Video Editors	17	22	5	29.41
Production Workers, All Other	1,727	2,232	505	29.24
Educational, Vocational, and School Counselors	202	261	59	29.21
Public Relations Specialists	148	191	43	29.05
Teacher Assistants	1,464	1,887	423	28.89
Materials Scientists	7	9	2	28.57
Optometrists	49	63	14	28.57
Obstetricians and Gynecologists	7	9	2	28.57
Patternmakers, Wood	7	9	2	28.57
Textile, Apparel, and Furnishings Workers, All Other	113	145	32	28.32
Other Education, Training, and Library Occupations	1,772	2,271	499	28.16
Massage Therapists	32	41	9	28.13
Manicurists and Pedicurists	82	105	23	28.05
Graphic Designers	132	169	37	28.03
Counselors, Social Workers, and Other Soc Serv Specs.	1,432	1,831	399	27.86
Medical and Public Health Social Workers	126	161	35	27.78
First-Line Supervisors/Managers of Correctional Officers	18	23	5	27.78
Biological Scientists	40	51	11	27.50
Residential Advisors	73	93	20	27.40
Gaming Services Workers	234	298	64	27.35
Anesthesiologists	11	14	3	27.27
Nursing, Psychiatric, and Home Health Aides	1,474	1,876	402	27.27
Occupational Health and Safety Specialists & Techs.	26	33	7	26.92
Sheet Metal Workers	448	568	120	26.79
Computer and Information Scientists, Research	15	19	4	26.67
Computer Hardware Engineers	15	19	4	26.67
Psychiatrists	45	57	12	26.67
Landscaping and Groundskeeping Workers	1,842	2,327	485	26.33
Biological Technicians	38	48	10	26.32
Health Educators	19	24	5	26.32
Semiconductor Processors	19	24	5	26.32
Health Diagnosing & Treating Support Techs.	631	796	165	26.15
Advertising, Marketing, Promotions, Public Relations, and Sales Managers	981	1,237	256	26.10
Textile Machine Setters, Operators, and Tenders	23	29	6	26.09
Helpers, Construction Trades, All Other	50	63	13	26.00
Counselors	413	520	107	25.91

Appendix D. Employment Projections by Occupation in the Joliet Junior College District, 2000-2010 (table 5)

Occupational Area	Employees	Projected	2000-10 Change	
	2000	2010	Number	Percent
Health Diagnosing and Treating Practitioners	4,198	5,282	1,084	25.82
Emergency Medical Technicians and Paramedics	256	322	66	25.78
Landscape Architects	35	44	9	25.71
Health Technologists and Technicians	2,363	2,970	607	25.69
Internists, General	74	93	19	25.68
Advertising Sales Agents	148	186	38	25.68
Diagnostic Related Technologists and Technicians	238	299	61	25.63
Miscellaneous Teachers and Instructors	1,456	1,829	373	25.62
Secondary School Teachers, Special & Vocational Ed	1,285	1,614	329	25.60
Healthcare Practitioners and Technical Occupations	6,889	8,651	1,762	25.58
Miscellaneous Entertainers and Performers, Sports	87	109	22	25.29
AO Entertainers, Performers, & Related Workers	87	109	22	25.29
Secondary School Teachers	1,417	1,772	355	25.05
Education, Training, and Library Occupations	11,566	14,459	2,893	25.01
Marketing Managers	248	310	62	25.00
Operations Research Analysts	28	35	7	25.00
Vocational Education Teachers, Middle School	24	30	6	25.00
Radiation Therapists	8	10	2	25.00
Recreational Vehicle Service Technicians	8	10	2	25.00
Recreation and Fitness Workers	699	873	174	24.89
Grounds Maintenance Workers	2,023	2,524	501	24.77
Other Teachers and Instructors	1,691	2,109	418	24.72
Marketing and Sales Managers	785	979	194	24.71
Community and Social Services Occupations	2,157	2,690	533	24.71
Sales Managers	537	669	132	24.58
Veterinarians	110	137	27	24.55
Other Protective Service Workers	1,481	1,844	363	24.51
Artists and Related Workers	151	188	37	24.50
Construction Laborers	1,898	2,362	464	24.45
Veterinary Assistants and Laboratory Animal Caretakers	201	250	49	24.38
Registered Nurses	2,399	2,982	583	24.30
Physicians and Surgeons	400	497	97	24.25
Adult Literacy, Remedial Educ & GED Teachers	54	67	13	24.07
Miscellaneous Business Operations Specialists	1,297	1,609	312	24.06
Coin, Vending, & Amusement Machine Operators	88	109	21	23.86
Social Workers	680	842	162	23.82
Architects, Except Naval	81	100	19	23.46
Pharmacists	273	337	64	23.44
Amusement and Recreation Attendants	373	460	87	23.32
Architects, Surveyors, and Cartographers	103	127	24	23.30
All Other Legal and Related Workers	56	69	13	23.21
Miscellaneous Life Scientists	26	32	6	23.08

Appendix D. Employment Projections by Occupation in the Joliet Junior College District, 2000-2010 (table 6)

Occupational Area	Employees	Projected	2000-10 Change	
	2000	2010	Number	Percent
Physicians and Surgeons, All Other	78	96	18	23.08
Nursing Aides, Orderlies, and Attendants	1,183	1,456	273	23.08
Telemarketers	385	473	88	22.86
Veterinary Technologists and Technicians	114	140	26	22.81
Miscellaneous Financial Specialists	202	248	46	22.77
All Other Construction Trades and Related Workers	290	356	66	22.76
Miscellaneous Construction and Related Workers	295	362	67	22.71
Other Personal Care and Service Workers	2,013	2,470	457	22.70
Telecommunications Line Installers and Repairers	125	153	28	22.40
Radiologic Technologists and Technicians	139	170	31	22.30
Agts & Business Mgrs of Artists, Performers, & Athletes	9	11	2	22.22
Audio-Visual Collections Specialists	9	11	2	22.22
Miscellaneous Extraction Workers	9	11	2	22.22
Primary, Secondary, and Special Ed. School Teachers	5,622	6,871	1,249	22.22
Helpers--Roofers	50	61	11	22.00
Architects, Except Landscape and Naval	46	56	10	21.74
Healthcare Practitioners and Technical Workers, All Other	276	336	60	21.74
Other Healthcare Practitioners and Technical Occupations	328	399	71	21.65
Television/Video/Motion Picture Camera Operators/Editors	37	45	8	21.62
Bakers	209	254	45	21.53
Hotel, Motel, and Resort Desk Clerks	84	102	18	21.43
Miscellaneous Education, Training, and Library Workers	187	227	40	21.39
Gaming Supervisors	47	57	10	21.28
Healthcare Support Workers, All Other	245	297	52	21.22
Locomotive Engineers	184	223	39	21.20
Misc. Health Practitioners & Technical Workers	302	366	64	21.19
Law Enforcement Workers	1,142	1,384	242	21.19
Library Technicians	138	167	29	21.01
Bill and Account Collectors	406	491	85	20.94
Mental Health Counselors	53	64	11	20.75
Civil Engineering Technicians	116	140	24	20.69
Miscellaneous Sales Representatives, Services	58	70	12	20.69
Clinical, Counseling, and School Psychologists	179	216	37	20.67
Education Administrators	563	679	116	20.60
Psychologists	180	217	37	20.56
Heating, Air Conditioning, & Refrigeration Mechanics & Installers	185	223	38	20.54
Child, Family, and School Social Workers	483	582	99	20.50
Medical Secretaries	203	244	41	20.20
Material Recording, Scheduling, Dispatching, & Distributing	104	125	21	20.19
Athletes, Coaches, Umpires, and Related Workers	119	143	24	20.17
Family and General Practitioners	129	155	26	20.16
Meeting and Convention Planners	50	60	10	20.00
Biochemists and Biophysicists	25	30	5	20.00

Appendix D. Employment Projections by Occupation in the Joliet Junior College District, 2000-2010 (table 7)

Occupational Area	Employees	Projected	2000-10 Change	
	2000	2010	Number	Percent
Agricultural and Food Science Technicians	15	18	3	20.00
Forensic Science Technicians	15	18	3	20.00
Art Directors	45	54	9	20.00
Producers and Directors	40	48	8	20.00
Technical Writers	40	48	8	20.00
Medical and Clinical Laboratory Technologists	140	168	28	20.00
Opticians, Dispensing	115	138	23	20.00
Lifeguards and Other Recreational Prot. Serv. Workers	10	12	2	20.00
Miscellaneous Personal Appearance Workers	145	174	29	20.00
Models, Demonstrators, and Product Promoters	85	102	17	20.00
Riggers	5	6	1	20.00
Water and Liquid Waste Treatment Plant and System	90	108	18	20.00
Loading Machine Operators, Underground Mining	5	6	1	20.00
Receptionists and Information Clerks	1,219	1,461	242	19.85
Elementary School Teachers, Except Special Education	2,173	2,602	429	19.74
Vocational Education Teachers, Secondary School	132	158	26	19.70
Licensed Practical and Licensed Vocational Nurses	523	626	103	19.69
Food Preparation & Serving Workers, Incl Fast Food	1,994	2,385	391	19.61
Gaming Cage Workers	153	183	30	19.61
Slaughterers and Meat Packers	51	61	10	19.61
Kindergarten Teachers, Except Special Education	216	258	42	19.44
Education Administrators, Elementary & Secondary	331	395	64	19.34
Protective Service Occupations	3,336	3,981	645	19.33
Clinical Laboratory Technologists and Technicians	295	352	57	19.32
Miscellaneous Counselors, Social, & Religious Workers	373	445	72	19.30
Miscellaneous Building & Grounds Cleaning & Maintenance Workers	188	224	36	19.15
Recreation Workers	418	498	80	19.14
Actors, Producers, and Directors	162	193	31	19.14
Education Administrators, Postsecondary	157	187	30	19.11
First-Line Supervisors/Managers of Gaming Workers	79	94	15	18.99
Structural Iron and Steel Workers	137	163	26	18.98
Actors	122	145	23	18.85
Library Assistants, Clerical	138	164	26	18.84
Surveyors, Cartographers, and Photogrammetrists	16	19	3	18.75
Nuclear Medicine Technologists	16	19	3	18.75
Agricultural Equipment Operators	16	19	3	18.75
Medical and Clinical Laboratory Technicians	155	184	29	18.71
Elementary and Middle School Teachers	3,103	3,683	580	18.69
Locomotive Engineers and Operators	198	235	37	18.69
Supervisors, Personal Care and Service Workers	204	242	38	18.63
Social and Community Service Managers	130	154	24	18.46
First-Line Supervisors/Managers of Personal Service	125	148	23	18.40

Appendix D. Employment Projections by Occupation in the Joliet Junior College District, 2000-2010 (table 8)

Occupational Area	Employees	Projected	2000-10 Change	
	2000	2010	Number	Percent
Personal Financial Advisors	49	58	9	18.37
Editors	98	116	18	18.37
Miscellaneous Personal Care and Service Workers	497	588	91	18.31
Bus Drivers, School	641	758	117	18.25
Directors, Religious Activities and Education	159	188	29	18.24
Education Administrators, All Other	11	13	2	18.18
Surveying and Mapping Technicians	22	26	4	18.18
Gaming Surveillance Officers and Gaming Investigators	105	124	19	18.10
Police and Sheriff's Patrol Officers	529	624	95	17.96
Electricians	1,441	1,699	258	17.90
Commercial and Industrial Designers	28	33	5	17.86
Chiropractors	28	33	5	17.86
Funeral Attendants	28	33	5	17.86
Human Resources Assistants, Except Payroll & Timekeeping	252	297	45	17.86
Roofers	336	396	60	17.86
Tax Examiners, Collectors, and Revenue Agents	129	152	23	17.83
Coaches and Scouts	101	119	18	17.82
Pharmacy Aides	118	139	21	17.80
Music Directors and Composers	45	53	8	17.78
Personal Care and Service Occupations	4,522	5,322	800	17.69
Self-Enrichment Education Teachers	181	213	32	17.68
Entertainers & Performers, Sports & Related Workers	878	1,033	155	17.65
Police Officers	533	627	94	17.64
Art and Design Workers	664	781	117	17.62
Religious Workers	352	414	62	17.61
Excavating and Loading Machine and Dragline Operators	224	263	39	17.41
Interpreters and Translators	23	27	4	17.39
Fast Food and Counter Workers	2,730	3,204	474	17.36
Demonstrators and Product Promoters	75	88	13	17.33
Administrative Services Managers	520	610	90	17.31
Pipelayers	111	130	19	17.12
Clergy	193	226	33	17.10
Musicians, Singers, and Related Workers	448	524	76	16.96
Dredge, Excavating, and Loading Machine Operators	236	276	40	16.95
Musicians and Singers	403	471	68	16.87
Electrical and Electronic Engineering Technicians	196	229	33	16.84
Sales and Related Workers, All Other	1,005	1,174	169	16.82
Truck Drivers, Heavy and Tractor-Trailer	2,723	3,179	456	16.75
Arts, Design, Entertainment, Sports, and Media	2,262	2,640	378	16.71
Budget Analysts	60	70	10	16.67
Dietitians and Nutritionists	48	56	8	16.67
Transportation Attendants, Exc. Flight	36	42	6	16.67
Reinforcing Iron and Rebar Workers	30	35	5	16.67

Appendix D. Employment Projections by Occupation in the Joliet Junior College District, 2000-2010 (table 9)

Occupational Area	Employees	Projected	2000-10 Change	
	2000	2010	Number	Percent
Elevator Installers and Repairers	48	56	8	16.67
Aircraft Mechanics and Service Technicians	12	14	2	16.67
Watch Repairers	12	14	2	16.67
Textile Knitting and Weaving Machine Setters, Ops, & Tndrs	6	7	1	16.67
Media and Communication Workers	499	582	83	16.63
Social Scientists and Related Workers	333	388	55	16.52
Life Scientists	103	120	17	16.50
Rehabilitation Counselors	103	120	17	16.50
Other Sales and Related Workers	1,824	2,125	301	16.50
Writers and Editors	200	233	33	16.50
Customer Service Representatives	2,472	2,877	405	16.38
Human Resources Managers	312	363	51	16.35
Training and Development Specialists	191	222	31	16.23
Art & Design Workers, All Other	99	115	16	16.16
Taxi Drivers and Chauffeurs	149	173	24	16.11
Computer, Automated Teller, and Office Machine Repairers	118	137	19	16.10
Insulation Workers	87	101	14	16.09
Business Operations Specialists	3,069	3,562	493	16.06
Middle School Teachers, Exc. Special & Vocational Ed.	906	1,051	145	16.00
Helpers--Electricians	25	29	4	16.00
Miscellaneous Sales and Related Workers	1,148	1,331	183	15.94
Preschool and Kindergarten Teachers	477	553	76	15.93
Miscellaneous Material Moving Workers	233	270	37	15.88
Material Moving Workers, All Other	233	270	37	15.88
Building and Grounds Cleaning and Maintenance	6,666	7,724	1,058	15.87
Compensation, Benefits, and Job Analysis Specialists	70	81	11	15.71
Miscellaneous Textile, Apparel, and Furnishings Workers	153	177	24	15.69
All Other Financial, Information, and Record Clerks	249	288	39	15.66
Slot Key Persons	32	37	5	15.63
Medical Equipment Repairers	32	37	5	15.63
Food Batchmakers	64	74	10	15.63
Miscellaneous Entertainment Attendants	718	830	112	15.60
Packaging and Filling Machine Operators and Tenders	449	519	70	15.59
Dispatchers, Except Police, Fire, and Ambulance	231	267	36	15.58
Entertainment Attendants and Related Workers	1,184	1,368	184	15.54
Parking Lot Attendants	251	290	39	15.54
Nonfarm Animal Caretakers	161	186	25	15.53
Bartenders	362	418	56	15.47
Designers	414	478	64	15.46
Financial Managers	751	867	116	15.45
Mathematical Scientists	52	60	8	15.38
Health & Safety Engineers, Exc. Mining Safety Engrs	26	30	4	15.38
Set and Exhibit Designers	13	15	2	15.38

Appendix D. Employment Projections by Occupation in the Joliet Junior College District, 2000-2010 (table 10)

Occupational Area	Employees	Projected	2000-10 Change	
	2000	2010	Number	Percent
Athletic Trainers	26	30	4	15.38
Medical Equipment Preparers	26	30	4	15.38
Model Makers and Patternmakers, Wood	13	15	2	15.38
Cost Estimators	302	348	46	15.23
Helpers--Brickmasons, & Tile & Marble Setters	92	106	14	15.22
Other Vehicle & Mobile Equip Mechanics, Instllrs, & Reprs	138	159	21	15.22
Funeral Service Workers	33	38	5	15.15
Securities, Commodities, & Financial Sales Agents	106	122	16	15.09
Miscellaneous Information and Record Clerks	253	291	38	15.02
Market and Survey Researchers	100	115	15	15.00
Camera Operators, Television, Video, and Motion Picture	20	23	3	15.00
Construction Trades Workers	10,947	12,585	1,638	14.96
Construction Managers	341	392	51	14.96
Production, Planning, and Expediting Clerks	415	477	62	14.94
Other Construction and Related Workers	1,128	1,295	167	14.80
Environmental Engineers	34	39	5	14.71
Transportation Inspectors	34	39	5	14.71
Operations Specialties Managers	2,505	2,873	368	14.69
Human Resources, Training, and Labor Relations Spclsts	410	470	60	14.63
Transportation Attendants	41	47	6	14.63
Construction and Extraction Occupations	13,436	15,391	1,955	14.55
Business and Financial Operations Occupations	4,995	5,721	726	14.53
Welders, Cutters, Solderers, and Brazers	483	553	70	14.49
Meat, Poultry, and Fish Cutters and Trimmers	83	95	12	14.46
Bus Drivers	1,102	1,261	159	14.43
Dispatchers	340	389	49	14.41
Security and Fire Alarm Systems Installers	118	135	17	14.41
Motor Vehicle Operators	5,963	6,819	856	14.36
Child Care Workers	565	646	81	14.34
Food and Beverage Serving Workers	5,745	6,567	822	14.31
Natural Sciences Managers	21	24	3	14.29
Recreational Therapists	42	48	6	14.29
Protective Service Workers, All Other	231	264	33	14.29
Skin Care Specialists	21	24	3	14.29
Farmworkers and Laborers, Crop, Nursery, and Greenhouse	63	72	9	14.29
Terrazzo Workers and Finishers	14	16	2	14.29
Glaziers	56	64	8	14.29
Earth Drillers, Except Oil and Gas	14	16	2	14.29
Locksmiths and Safe Repairers	21	24	3	14.29
Locomotive Firers	7	8	1	14.29
Welding, Soldering, and Brazing Workers	561	640	79	14.08
Driver/Sales Workers and Truck Drivers	4,460	5,088	628	14.08
Architectural and Civil Drafters	64	73	9	14.06

Appendix D. Employment Projections by Occupation in the Joliet Junior College District, 2000-2010 (table 11)

Occupational Area	Employees	Projected	2000-10 Change	
	2000	2010	Number	Percent
Refuse and Recyclable Material Collectors	378	431	53	14.02
Tapers	93	106	13	13.98
Cooks, Restaurant	688	784	96	13.95
First-Line Supvrs/Mgrs of Trans & Material-Moving Machine & Vehicle	201	229	28	13.93
Packers and Packagers, Hand	1,133	1,290	157	13.86
Helpers, Construction Trades	521	593	72	13.82
Drywall Installers, Ceiling Tile Installers, and Tapers	319	363	44	13.79
Chief Executives	979	1,114	135	13.79
Janitors & Cleaners, Exc. Maids & Housekeeping Cleaners	3,098	3,524	426	13.75
Miscellaneous Media and Communication Workers	80	91	11	13.75
Drywall and Ceiling Tile Installers	226	257	31	13.72
Sailors and Marine Oilers	22	25	3	13.64
Paralegals and Legal Assistants	81	92	11	13.58
Counter and Rental Clerks	597	678	81	13.57
Brickmasons and Blockmasons	590	670	80	13.56
Brickmasons, Blockmasons, and Stonemasons	598	679	81	13.55
Painting, Coating, and Decorating Workers	30	34	4	13.33
Supervisors, Transportation and Material Moving Workers	399	452	53	13.28
Animal Care and Service Workers	219	248	29	13.24
Librarians, Curators, and Archivists	326	369	43	13.19
Miscellaneous Production Workers	3,416	3,866	450	13.17
Water Transportation Workers	38	43	5	13.16
Market Research Analysts	92	104	12	13.04
Preschool Teachers, Except Special Education	261	295	34	13.03
Farmworkers, Farm and Ranch Animals	31	35	4	12.90
Accountants and Auditors	966	1,090	124	12.84
Transportation, Storage, and Distribution Managers	172	194	22	12.79
Precision Instrument and Equipment Repairers	55	62	7	12.73
Mail Clerks & Mail Machine Operators, Exc. Postal Service	237	267	30	12.66
Food Servers, Nonrestaurant	87	98	11	12.64
Private Detectives and Investigators	40	45	5	12.50
Stonemasons	8	9	1	12.50
Plasterers and Stucco Masons	72	81	9	12.50
Motorboat Mechanics	16	18	2	12.50
Laundry and Dry-Cleaning Workers	217	244	27	12.44
Merchandise Displayers and Window Trimmers	73	82	9	12.33
Engineering Technicians, Except Drafters	504	566	62	12.30
Media and Communication Workers, All Other	57	64	7	12.28
Electrical & Electronics Reprs, Commercial & Industrial	74	83	9	12.16
Financial Analysts	132	148	16	12.12
Cleaners of Vehicles and Equipment	380	426	46	12.11
Financial Specialists	1,926	2,159	233	12.10
Employment, Recruitment, and Placement Specialists	149	167	18	12.08

Appendix D. Employment Projections by Occupation in the Joliet Junior College District, 2000-2010 (table 12)

Occupational Area	Employees	Projected	2000-10 Change	
	2000	2010	Number	Percent
Miscellaneous Installation, Maintenance, and Repair	755	846	91	12.05
Helpers--Pipelayers, Plumbers, Pipefitters, and Steamfitters	83	93	10	12.05
Building Cleaning and Pest Control Workers	4,038	4,524	486	12.04
Electric Motor, Power Tool, and Related Repairers	25	28	3	12.00
Building Cleaning Workers	4,030	4,513	483	11.99
Pipelayers, Plumbers, Pipefitters, and Steamfitters	1,319	1,477	158	11.98
Legal Secretaries	201	225	24	11.94
Police, Fire, and Ambulance Dispatchers	109	122	13	11.93
Assemblers and Fabricators, All Other	639	715	76	11.89
Information and Record Clerks	5,878	6,575	697	11.86
Dancers	17	19	2	11.76
Fire Inspectors and Investigators	17	19	2	11.76
Helpers--Painters, Paperhangers, Plasterers, and Stucco Masons	51	57	6	11.76
Cashiers	4,695	5,245	550	11.71
Entertainment Attendants and Related Workers	43	48	5	11.63
Plant and System Operators, All Other	129	144	15	11.63
Food Cooking Machine Operators and Tenders	26	29	3	11.54
Welding, Soldering, & Brazing Machine Setters	78	87	9	11.54
Claims Adjusters, Examiners, and Investigators	139	155	16	11.51
Plumbers, Pipefitters, and Steamfitters	1,208	1,347	139	11.51
Floor Sanders and Finishers	44	49	5	11.36
Paving, Surfacing, and Tamping Equipment Operators	88	98	10	11.36
Property, Real Estate, and Community Association Mgrs	141	157	16	11.35
Cashiers	4,608	5,129	521	11.31
Writers and Authors	62	69	7	11.29
Gaming Workers, All Other	62	69	7	11.29
Counter Attendants, Cafeteria, Food Concssn, & Cffee Shp	736	819	83	11.28
Office Clerks, General	3,566	3,968	402	11.27
Helpers--Installation, Maintenance, and Repair Workers	213	237	24	11.27
Automotive Service Technicians and Mechanics	1,232	1,370	138	11.20
Lawyers	404	449	45	11.14
Astronomers and Physicists	9	10	1	11.11
Physicists	9	10	1	11.11
Arbitrators, Mediators, and Conciliators	9	10	1	11.11
Misc. Media and Communication Equip. Workers	36	40	4	11.11
Reservation and Transportation Ticket Agents and Travel	27	30	3	11.11
Statistical Assistants	9	10	1	11.11
Truck Drivers, Light or Delivery Services	1,346	1,495	149	11.07
Transportation and Material Moving Occupations	14,239	15,813	1,574	11.05
Food Preparation Workers	1,828	2,030	202	11.05
Claims Adjusters, Examiners, and Investigators	154	171	17	11.04
Management Occupations	13,270	14,726	1,456	10.97
Waiters and Waitresses	2,566	2,847	281	10.95

Appendix D. Employment Projections by Occupation in the Joliet Junior College District, 2000-2010 (table 13)

Occupational Area	Employees	Projected	2000-10 Change	
	2000	2010	Number	Percent
Top Executives	4,178	4,634	456	10.91
Installation, Maintenance, and Repair Workers, All Other	385	427	42	10.91
Drafters, Engineering, and Mapping Technicians	899	997	98	10.90
First-Line Supvrs/Mgrs, Laborers, & Material Movers	184	204	20	10.87
First-Line Supvrs/Mgrs of Housekeeping & Janitorial Wkrs	203	225	22	10.84
Correspondence Clerks	37	41	4	10.81
Financial Analysts and Advisors	250	277	27	10.80
Carpenters	2,261	2,504	243	10.75
Automotive Technicians and Repairers	1,627	1,801	174	10.69
Painters, Construction and Maintenance	668	739	71	10.63
Retail Sales Workers	10,126	11,199	1,073	10.60
Misc. First-Line Supervisors/Managers, Prot. Serv. Workers	85	94	9	10.59
First-Line Supvrs/Mgrs, Protective Service Workers,	85	94	9	10.59
Fine Artists, Including Painters, Sculptors, and Illustrators	19	21	2	10.53
Painters, Transportation Equipment	38	42	4	10.53
Miscellaneous Transportation Workers	323	357	34	10.53
Personal Appearance Workers	754	833	79	10.48
Painters and Paperhangers	739	816	77	10.42
Media and Communication Equipment Workers	221	244	23	10.41
Weighers, Measurers, Checkers, & Samplers,	87	96	9	10.34
Miscellaneous Motor Vehicle Operators	184	203	19	10.33
Supervisors, Construction and Extraction Workers	705	777	72	10.21
Computer-Controlled Machine Tool Operators, Metal &	235	259	24	10.21
Retail Salespersons	4,522	4,981	459	10.15
Multiple Machine Tool Setters, Operators, and Tenders, Metal and Plastic	89	98	9	10.11
General and Operations Managers	3,113	3,427	314	10.09
Concierges	20	22	2	10.00
Tile and Marble Setters	60	66	6	10.00
Metal-Refining Furnace Operators and Tenders	20	22	2	10.00
Separating, Filtrng, Clarfyng, Precipitng & Still Mach Sttrs	30	33	3	10.00
Food Processing Workers	691	760	69	9.99
Material Moving Workers	6,452	7,094	642	9.95
First-Line Supvrs/Mgrs of Food Prep & Serving Workers	686	754	68	9.91
Sales and Related Occupations	16,852	18,520	1,668	9.90
Door-To-Door Sales Workers, Vendors, & Related Wkrs	143	157	14	9.79
Drafter, Engineering, & Mapping Technicians, All Other	184	202	18	9.78
Home Appliance Repairers	82	90	8	9.76
Computer Programmers	536	588	52	9.70
Misc. Vehicle & Mobile Equip Mechanics & Installers	227	249	22	9.69
Computer Control Programmers and Operators	258	283	25	9.69
Laborers and Material Movers, Hand	4,701	5,154	453	9.64
Miscellaneous Protective Service Workers	353	387	34	9.63
Automotive Body and Related Repairers	364	399	35	9.62

Appendix D. Employment Projections by Occupation in the Joliet Junior College District, 2000-2010 (table 14)

Occupational Area	Employees	Projected	2000-10 Change	
	2000	2010	Number	Percent
Funeral Directors	42	46	4	9.52
Legal Occupations	711	778	67	9.42
Pesticide Handlers, Sprayers, and Applicators, Vegetation	64	70	6	9.38
Vehicle and Mobile Equipment Mechanics, Installers	2,453	2,682	229	9.34
Broadcast & Sound Techs & Operators	75	82	7	9.33
Management Analysts	333	364	31	9.31
Management Analysts	333	364	31	9.31
Life, Physical, and Social Science Occupations	1,240	1,355	115	9.27
Civil Engineers	207	226	19	9.18
Other Production Occupations	5,733	6,259	526	9.17
Supervisors, Food Preparation and Serving Workers	755	824	69	9.14
Bus Drivers, Transit and Intercity	461	503	42	9.11
Urban and Regional Planners	11	12	1	9.09
Environmental Science & Protection Technicians & Health	44	48	4	9.09
Lawyers, Judges, and Related Workers	484	528	44	9.09
Court Reporters	22	24	2	9.09
Captains, Mates, and Pilots of Water Vessels	11	12	1	9.09
Laborers and Freight, Stock, and Material Movers, Hand	3,022	3,296	274	9.07
Hairdressers, Hairstylists, and Cosmetologists	552	602	50	9.06
First-Line Supervisors/Managers, Law Enforcement	222	242	20	9.01
Transportation Workers, All Other	312	340	28	8.97
Mobile Heavy Equipment Mechanics, Except Engines	90	98	8	8.89
Chemists and Materials Scientists	226	246	20	8.85
Miscellaneous Social Scientists and Related Workers	34	37	3	8.82
Social Scientists and Related Workers, All Other	34	37	3	8.82
Sales Representatives, Services	635	691	56	8.82
Compliance Officers, Exc. Agr, Cons, Health & Safety	91	99	8	8.79
Tax Examiners, Collectors, and Revenue Agents	80	87	7	8.75
First-Line Supvrs/Mgrs of Mechanics, Installers, & Repairers	429	466	37	8.62
Food Service Managers	484	525	41	8.47
Paperhangers	71	77	6	8.45
Textile, Apparel, and Furnishings Workers	643	697	54	8.40
Supervisors, Building and Grounds Cleaning and Maintenance Wkrs	417	452	35	8.39
Textile, Apparel, and Furnishings Workers	643	697	54	8.40
Supervisors, Building and Grounds Cleaning and Maintenance	417	452	35	8.39
Biomedical Engineers	12	13	1	8.33
Shampooers	36	39	3	8.33
Ship and Boat Captains and Operators	12	13	1	8.33
Industrial Truck and Tractor Operators	690	747	57	8.26
Helpers--Carpenters	170	184	14	8.24
Chemists	219	237	18	8.22
Barbers and Cosmetologists	609	659	50	8.21

Appendix D. Employment Projections by Occupation in the Joliet Junior College District, 2000-2010 (table 15)

Occupational Area	Employees	Projected	2000-10 Change	
	2000	2010	Number	Percent
Millwrights	122	132	10	8.20
First-Line Supervisors/Managers, Protective Service	367	397	30	8.17
Legislators	86	93	7	8.14
Supervisors, Sales Workers	1,991	2,151	160	8.04
Structural Metal Fabricators and Fitters	75	81	6	8.00
Real Estate Appraisers and Assessors	38	41	3	7.89
Other Electrical & Electronic Equip Mechanics, Instllrs, Rprs	102	110	8	7.84
Executive Secretaries and Administrative Assistants	1,645	1,773	128	7.78
Surveyors	13	14	1	7.69
Librarians	182	196	14	7.69
Audio and Video Equipment Technicians	39	42	3	7.69
Bailiffs	13	14	1	7.69
Tree Trimmers and Pruners	117	126	9	7.69
Carpet, Floor, and Tile Installers and Finishers	169	182	13	7.69
Floor Layers, Except Carpet, Wood, and Hard Tiles	13	14	1	7.69
Fiberglass Laminators and Fabricators	52	56	4	7.69
Food Preparation and Serving Related Occupations	12,684	13,658	974	7.68
Real Estate Sales Agents	80	86	6	7.50
Real Estate Brokers and Sales Agents	107	115	8	7.48
Bus and Truck Mechanics and Diesel Engine Specialists	308	331	23	7.47
Plating & Coating Mach Setters, Ops & Tndrs, Metal & Plastic	67	72	5	7.46
Drafters	189	203	14	7.41
Real Estate Brokers	27	29	2	7.41
Chemical Processing Machine Setters, Oprs, and Tndrs	189	203	14	7.41
First-Line Supervisors/Managers of Police and Detectives	204	219	15	7.35
Hoist and Winch Operators	41	44	3	7.32
Pressers, Textile, Garment, and Related Materials	96	103	7	7.29
Cooks, Institution and Cafeteria	426	457	31	7.28
Actuaries	14	15	1	7.14
Electrical and Electronics Engineers	196	210	14	7.14
Detectives and Criminal Investigators	140	150	10	7.14
Parking Enforcement Workers	14	15	1	7.14
Agricultural Inspectors	14	15	1	7.14
Aircraft Mechanics and Service Technicians	14	15	1	7.14
Counter and Rental Clerks and Parts Salespersons	909	973	64	7.04
Floral Designers	128	137	9	7.03
Transportation, Tourism, and Lodging Attendants	115	123	8	6.96
Chemical Equipment Operators and Tenders	159	170	11	6.92
Psychiatric Aides	29	31	2	6.90
Animal Trainers	58	62	4	6.90
Cooks and Food Preparation Workers	3,998	4,271	273	6.83
Conveyor Operators and Tenders	44	47	3	6.82
Construction Equipment Operators	649	693	44	6.78

Appendix D. Employment Projections by Occupation in the Joliet Junior College District, 2000-2010 (table 16)

Occupational Area	Employees	Projected	2000-10 Change	
	2000	2010	Number	Percent
Fence Erectors	89	95	6	6.74
Industrial Machinery Mechanics	297	317	20	6.73
Other Management Occupations	5,606	5,982	376	6.71
Insurance Appraisers, Auto Damage	15	16	1	6.67
Loan Counselors	30	32	2	6.67
Installation, Maintenance, and Repair Occupations	7,365	7,850	485	6.59
Dental Laboratory Technicians	31	33	2	6.45
Painting Workers	217	231	14	6.45
Miscellaneous Food Processing Workers	173	184	11	6.36
Physical Scientists	315	335	20	6.35
Locker Room, Coatroom, and Dressing Room Attendants	300	319	19	6.33
First-Line Suprvrs/Mgrs of Office & Admin Support Wkrs	1,516	1,612	96	6.33
Metal Workers and Plastic Workers, All Other	286	304	18	6.29
Small Engine Mechanics	80	85	5	6.25
Metal Furnace and Kiln Operators and Tenders	32	34	2	6.25
Furniture Finishers	32	34	2	6.25
Operating Engineers & Other Construction Equipment Ops	555	589	34	6.13
Other Transportation Workers	801	850	49	6.12
Maids and Housekeeping Cleaners	932	989	57	6.12
First-Line Suprvrs/Mgrs of Lndscpng, Lawn Serv, & Grndskpng Wkrs	214	227	13	6.07
Court, Municipal, and License Clerks	118	125	7	5.93
File Clerks	253	268	15	5.93
Farm Equipment Mechanics	51	54	3	5.88
Driver/Sales Workers	391	414	23	5.88
Legal Support Workers	171	181	10	5.85
Cabinetmakers and Bench Carpenters	154	163	9	5.84
Miscellaneous Life, Physical, and Social Science Techs	240	254	14	5.83
Purchasing Agents, Exc. Wholesale, Retail, & Farm	227	240	13	5.73
Subway and Streetcar Operators	35	37	2	5.71
Helpers--Extraction Workers	71	75	4	5.63
Office and Administrative Support Occupations	26,700	28,185	1,485	5.56
Medical Scientists, Except Epidemiologists	18	19	1	5.56
Interior Designers	36	38	2	5.56
Outdoor Power Equipment and Other Small Engine	36	38	2	5.56
Electrical and Electronics Drafters	73	77	4	5.48
Photographers	73	77	4	5.48
Mixing and Blending Machine Setters, Operators, and Tndrs	256	270	14	5.47
Highway Maintenance Workers	385	406	21	5.45
Farm, Ranch, and Other Agricultural Managers	352	371	19	5.40
Crushing, Grinding, Polishing, Mixing, and Blending	352	371	19	5.40
Miscellaneous Managers	1,873	1,973	100	5.34
Electrical and Electronic Equipment Mechanics, Installers,	657	692	35	5.33
Other Office and Administrative Support Workers	6,067	6,390	323	5.32

Appendix D. Employment Projections by Occupation in the Joliet Junior College District, 2000-2010 (table 17)

Occupational Area	Employees	Projected	2000-10 Change	
	2000	2010	Number	Percent
Environmental Scientists and Specialists, Including Health	19	20	1	5.26
Crushing, Grinding, & Polishing Machine Setters	57	60	3	5.26
Psychiatric Technicians	153	161	8	5.23
First-Line Supervisors/Managers of Non-Retail Sales	331	348	17	5.14
Grinding and Polishing Workers, Hand	39	41	2	5.13
Sales Engineers	99	104	5	5.05
Cement Masons, Concrete Finishers, and Terrazzo Workers	325	341	16	4.92
Ushers, Lobby Attendants, and Ticket Takers	225	236	11	4.89
Other Installation, Maintenance, and Repair Occupations	3,826	4,010	184	4.81
Medical Scientists	21	22	1	4.76
Sales Reps, Whse & Mfg, Technical & Scientific Products	549	575	26	4.74
Life, Physical, and Social Science Technicians	489	512	23	4.70
Architecture and Engineering Occupations	2,452	2,567	115	4.69
Extruding & Drawing Mach Setters, Ops, & Tndrs	107	112	5	4.67
Shipping, Receiving, and Traffic Clerks	1,032	1,079	47	4.55
Tour Guides and Escorts	22	23	1	4.55
Photographic Processing Machine Operators	44	46	2	4.55
Secretaries and Administrative Assistants	4,019	4,200	181	4.50
Cement Masons and Concrete Finishers	311	325	14	4.50
Extraction Workers	135	141	6	4.44
Purchasing Agents and Buyers, Farm Products	23	24	1	4.35
Numerical Tool and Process Control Programmers	23	24	1	4.35
Production Occupations	15,951	16,642	691	4.33
Miscellaneous Metalworkers and Plastic Workers	442	461	19	4.30
Butchers & Meat, Poultry, & Fish Processing Workers	309	322	13	4.21
Mechanical Engineers	288	300	12	4.17
Hosts and Hostesses, Restaurant, Lounge, and Coffee Shp	412	429	17	4.13
Coating, Painting, & Spraying Machine Setters	149	155	6	4.03
Credit Analysts	78	81	3	3.85
Miscellaneous Electrical and Electronic Equipment	494	513	19	3.85
Woodworkers	339	352	13	3.83
Miscellaneous Assemblers and Fabricators	1,903	1,975	72	3.78
Broadcast Technicians	27	28	1	3.70
Tour and Travel Guides	28	29	1	3.57
Motorcycle Mechanics	28	29	1	3.57
Material Recording, Scheduling, & Dispatching Workers	5,192	5,377	185	3.56
Postal Service Mail Carriers	284	294	10	3.52
Industrial Machinery Installation, Repair, and Maintenance	1,985	2,054	69	3.48
Lodging Managers	29	30	1	3.45
Coil Winders, Tapers, and Finishers	29	30	1	3.45
Crane and Tower Operators	58	60	2	3.45
Sales Representatives, Wholesale and Manufacturing	2,276	2,354	78	3.43
Molders, Shapers, and Casters, Except Metal & Plastic	59	61	2	3.39

Appendix D. Employment Projections by Occupation in the Joliet Junior College District, 2000-2010 (table 18)

Occupational Area	Employees	Projected	2000-10 Change	
	2000	2010	Number	Percent
Cooks	2,170	2,241	71	3.27
Dancers and Choreographers	62	64	2	3.23
Automotive Glass Installers and Repairers	31	32	1	3.23
Extruding, Forming, Pressing, & Compacting Mach Sttrs	93	96	3	3.23
Stock Clerks and Order Fillers	2,257	2,329	72	3.19
Sales Reps, Whlsle & Mfg, Exc. Technical & Scientific Prod	1,727	1,779	52	3.01
Maintenance Workers, Machinery	135	139	4	2.96
Insurance Underwriters	69	71	2	2.90
Fire Fighting and Prevention Workers	346	356	10	2.89
Other Farming, Fishing, and Forestry Workers	555	571	16	2.88
Life, Physical, and Social Science Techniciansr	176	181	5	2.84
New Accounts Clerks	106	109	3	2.83
Industrial Engineering Technicians	73	75	2	2.74
Maintenance and Repair Workers, General	1,431	1,466	35	2.45
Fire Fighters	329	337	8	2.43
Environmental Scientists and Geoscientists	42	43	1	2.38
Heat Treating Equipment Setters, Ops & Tndrs	43	44	1	2.33
Job Printers	44	45	1	2.27
Financial Clerks	3,710	3,793	83	2.24
Baggage Porters, Bellhops, and Concierges	46	47	1	2.17
Supervisors, Farming, Fishing, and Forestry Workers	94	96	2	2.13
Mechanical Engineering Technicians	49	50	1	2.04
Sawing Machine Setters, Operators, and Tenders, Wood	49	50	1	2.04
Heavy Vehicle and Mobile Equipment Service Technicians	197	201	4	2.03
Mechanical Drafters	52	53	1	1.92
Carpet Installers	52	53	1	1.92
Assemblers and Fabricators	2,430	2,476	46	1.89
Postal Service Clerks	55	56	1	1.82
Dentists	116	118	2	1.72
Buyers and Purchasing Agents	410	417	7	1.71
First-Line Supvrs/Mgrs of Fire Fighting & Prevention Wkrs	60	61	1	1.67
Bindery Workers	123	125	2	1.63
Bookbinders and Bindery Workers	126	128	2	1.59
Chefs and Head Cooks	69	70	1	1.45
Machinists	575	583	8	1.39
Billing and Posting Clerks and Machine Operators	584	592	8	1.37
Helpers--Production Workers	1,246	1,260	14	1.12
Bookkeeping, Accounting, and Auditing Clerks	1,825	1,843	18	0.99
Insurance Sales Agents	209	211	2	0.96
Metal Workers and Plastic Workers	3,828	3,862	34	0.89
Cooks, Short Order	296	298	2	0.68
All Other Secretaries, Admin Assistants, & Office Support	1,064	1,070	6	0.56
Postal Service Workers	575	577	2	0.35

Appendix D. Employment Projections by Occupation in the Joliet Junior College District, 2000-2010 (table 19)

Occupational Area	Employees	Projected	2000-10 Change	
	2000	2010	Number	Percent
Miscellaneous Office and Administrative Support Workers	1,105	1,108	3	0.27
Data Entry Keyers	439	440	1	0.23
Postmasters and Mail Superintendents	19	19	0	0.00
Emergency Management Specialists	13	13	0	0.00
Financial Examiners	26	26	0	0.00
Statisticians	8	8	0	0.00
Electrical Engineers	115	115	0	0.00
Materials Engineers	21	21	0	0.00
Mining and Geological Engineers, Incl Mining Safety Engrs	5	5	0	0.00
Aerospace Engineering and Operations Technicians	5	5	0	0.00
Geoscientists, Except Hydrologists and Geographers	22	22	0	0.00
Nuclear Technicians	11	11	0	0.00
Legal Support Workers, All Other	10	10	0	0.00
Archivists, Curators, and Museum Technicians	6	6	0	0.00
Choreographers	45	45	0	0.00
Animal Control Workers	9	9	0	0.00
Embalmers	5	5	0	0.00
Barbers	57	57	0	0.00
Makeup Artists, Theatrical and Performance	6	6	0	0.00
Travel Guides	6	6	0	0.00
Flight Attendants	5	5	0	0.00
Payroll and Timekeeping Clerks	262	262	0	0.00
Graders and Sorters, Agricultural Products	28	28	0	0.00
Forest and Conservation Workers	6	6	0	0.00
Pile-Driver Operators	6	6	0	0.00
Mining Machine Operators	10	10	0	0.00
Continuous Mining Machine Operators	7	7	0	0.00
Rock Splitters, Quarry	6	6	0	0.00
Roustabouts, Oil and Gas	8	8	0	0.00
Camera and Photographic Equipment Repairers	5	5	0	0.00
Manufactured Building and Mobile Home Installers	15	15	0	0.00
Engine and Other Machine Assemblers	117	117	0	0.00
Timing Device Assemblers, Adjusters, and Calibrators	14	14	0	0.00
Grinding, Lapping, Polishing, & Buffing Mach Tool Sttrs	110	110	0	0.00
Pourers and Casters, Metal	12	12	0	0.00
Printing Machine Operators	181	181	0	0.00
All Other Printing Workers	57	57	0	0.00
Textile Cutting Machine Setters, Operators, and Tenders	7	7	0	0.00
Extruding & Forming Mach Sttrs, Syn & Glass Fibers	12	12	0	0.00
Model Makers, Wood	6	6	0	0.00
Woodworking Machine Setters, Operators, and Tenders	115	115	0	0.00
Miscellaneous Woodworkers	25	25	0	0.00
Cutters and Trimmers, Hand	32	32	0	0.00

Appendix D. Employment Projections by Occupation in the Joliet Junior College District, 2000-2010 (table 20)

Occupational Area	Employees	Projected	2000-10 Change	
	2000	2010	Number	Percent
Furnace, Kiln, Oven, Drier, and Kettle	28	28	0	0.00
Medical Appliance Technicians	12	12	0	0.00
Etchers and Engravers	8	8	0	0.00
Air Traffic Controllers and Airfield Operations Specialists	14	14	0	0.00
Air Traffic Controllers	10	10	0	0.00
Dredge Operators	7	7	0	0.00
Tank Car, Truck, and Ship Loaders	22	22	0	0.00
Engineers	1,450	1,443	-7	-0.48
Secretaries, Except Legal, Medical, and Executive	1,970	1,958	-12	-0.61
Team Assemblers	1,198	1,190	-8	-0.67
Farming, Fishing, and Forestry Occupations	2,206	2,188	-18	-0.82
Crossing Guards	112	111	-1	-0.89
Plant and System Operators	826	817	-9	-1.09
Judges, Magistrates, and Other Judicial Workers	80	79	-1	-1.25
Tire Repairers and Changers	79	78	-1	-1.27
Photographic Process Workers and Processing Machine	77	76	-1	-1.30
Woodworking Machine Setters, Exc. Sawing	66	65	-1	-1.52
Loan Counselors and Officers	177	174	-3	-1.69
Chemical Technicians	176	173	-3	-1.70
Chemical Technicians	176	173	-3	-1.70
Judges, Magistrate Judges, and Magistrates	53	52	-1	-1.89
Engineering Managers	314	308	-6	-1.91
Engineering Managers	314	308	-6	-1.91
Miscellaneous Plant and System Operators	449	440	-9	-2.00
Industrial Production Managers	245	240	-5	-2.04
Construction and Building Inspectors	49	48	-1	-2.04
Medical, Dental, and Ophthalmic Laboratory Technicians	96	94	-2	-2.08
Agricultural Workers	1,532	1,497	-35	-2.28
Forming Machine Setters Metal and Plastic	390	381	-9	-2.31
Supervisors, Production Workers	951	929	-22	-2.31
Miscellaneous Agricultural Workers	1,489	1,452	-37	-2.48
Law Clerks	38	37	-1	-2.63
Agricultural Managers	1,441	1,403	-38	-2.64
Molding, Coremaking, & Cstng Mach Sttrs, Metal & Plast	292	284	-8	-2.74
Line Installers and Repairers	614	595	-19	-3.09
Miscellaneous Rail Transportation Workers	32	31	-1	-3.13
Boilermakers	63	61	-2	-3.17
Loan Officers	147	142	-5	-3.40
Molders & Molding Mach Setters, Oper & Tenders	321	310	-11	-3.43
Electromechanical Equipment Assemblers	85	82	-3	-3.53
Tailors, Dressmakers, and Custom Sewers	28	27	-1	-3.57
Tire Builders	56	54	-2	-3.57
Air Transportation Workers	27	26	-1	-3.70

Appendix D. Employment Projections by Occupation in the Joliet Junior College District, 2000-2010 (table 21)

Occupational Area	Employees	Projected	2000-10 Change	
	2000	2010	Number	Percent
Electro-Mechanical Technicians	53	51	-2	-3.77
Postal Service Mail Sorters, Processors, & Processing Mach	236	227	-9	-3.81
Agricultural Workers, All Other	1,379	1,326	-53	-3.84
Baggage Porters and Bellhops	26	25	-1	-3.85
Proofreaders and Copy Markers	26	25	-1	-3.85
Railroad Conductors and Yardmasters	182	175	-7	-3.85
Stationary Engineers and Boiler Operators	103	99	-4	-3.88
All Other Food Processing Workers	77	74	-3	-3.90
Printing Workers	510	490	-20	-3.92
Cutting Workers	102	98	-4	-3.92
Industrial Engineers, Including Health and Safety	201	193	-8	-3.98
Forest, Conservation, and Logging Workers	25	24	-1	-4.00
Tailors, Dressmakers, and Sewers	74	71	-3	-4.05
News Analysts, Reporters and Correspondents	48	46	-2	-4.17
Credit Authorizers, Checkers, and Clerks	93	89	-4	-4.30
Sewers, Hand	46	44	-2	-4.35
Wholesale and Retail Buyers, Except Farm Products	160	153	-7	-4.38
Tool and Die Makers	250	239	-11	-4.40
Purchasing Managers	221	211	-10	-4.52
Brokerage Clerks	20	19	-1	-5.00
Butchers and Meat Cutters	175	166	-9	-5.14
Farmers and Ranchers	1,089	1,032	-57	-5.23
Logging Workers	19	18	-1	-5.26
Rail Transportation Workers	559	529	-30	-5.37
Miscellaneous Physical Scientists	37	35	-2	-5.41
Parts Salespersons	312	295	-17	-5.45
Jewelers and Precious Stone and Metal Workers	91	86	-5	-5.49
Administrative Law Judges, Adjudicators, & Hearing Officers	18	17	-1	-5.56
Logging Equipment Operators	18	17	-1	-5.56
Cleaning, Washing, & Metal Pickling Equipment	18	17	-1	-5.56
Petroleum Pump System Operators, Refinery, & Gaugers	140	132	-8	-5.71
Cutting and Slicing Machine Setters, Operators	70	66	-4	-5.71
Electrical and Electronics Installers & Reprs, Transportation	34	32	-2	-5.88
Inspectors, Testers, Sorters, Samplers, and Weighers	604	567	-37	-6.13
Gas Compressor and Gas Pumping Station Operators	16	15	-1	-6.25
Radio and Telecommunications Equipment Installers	45	42	-3	-6.67
Control and Valve Installers and Repairers	150	140	-10	-6.67
Control & Valve Installers & Repairers, Excl. Mech. Door	149	139	-10	-6.71
Printers	327	305	-22	-6.73
Drilling & Boring Mach Tool Strs, Ops, & Tndrs,	193	180	-13	-6.74
Industrial Engineers	175	163	-12	-6.86
Data Entry and Information Processing Workers	679	632	-47	-6.92
Telecommunications Equipment Instllrs & Reprs, Exc. Line	42	39	-3	-7.14

Appendix D. Employment Projections by Occupation in the Joliet Junior College District, 2000-2010 (table 22)

Occupational Area	Employees	Projected	2000-10 Change	
	2000	2010	Number	Percent
Bridge and Lock Tenders	14	13	-1	-7.14
Office and Administrative Support Workers, All Other	41	38	-3	-7.32
Power Plant Operators	121	112	-9	-7.44
Lathe & Turning Mach Tool Sttrs, Metal & Plastic	134	124	-10	-7.46
Cooks, Fast Food	756	699	-57	-7.54
Ophthalmic Laboratory Technicians	53	49	-4	-7.55
Power Plant Operators, Distributors, and Dispatchers	184	170	-14	-7.61
Agricultural and Food Scientists	13	12	-1	-7.69
Aircraft Pilots and Flight Engineers	13	12	-1	-7.69
Gas Plant Operators	64	59	-5	-7.81
Electrical & Electronics Reprs, Powerhouse, Substation, Power Distributors and Dispatchers	102	94	-8	-7.84
Machine Tool Cutting Setters, Operators, and Tenders, Metal and Plastic	62	57	-5	-8.06
Cargo and Freight Agents	886	813	-73	-8.24
Tool Grinders, Filers, and Sharpeners	35	32	-3	-8.57
Other Food Preparation and Serving Related Workers	35	32	-3	-8.57
Announcers	2,186	1,996	-190	-8.69
Photographic Process Workers	23	21	-2	-8.70
Airline Pilots, Copilots, and Flight Engineers	33	30	-3	-9.09
Wellhead Pumpers	11	10	-1	-9.09
Chemical Plant and System Operators	11	10	-1	-9.09
Electrical Power-Line Installers and Repairers	116	105	-11	-9.48
Electrical, Electronics, and Electromechanical Assemblers	489	442	-47	-9.61
Food Preparation and Serving Related Workers, All Other	332	300	-32	-9.64
Title Examiners, Abstractors, and Searchers	411	371	-40	-9.73
Procurement Clerks	20	18	-2	-10.00
Foundry Mold and Coremakers	60	54	-6	-10.00
Sewing Machine Operators	29	26	-3	-10.34
Cutting, Punching, & Press Mach Sttrs, Ops & Tndrs, Metal & Plast	77	69	-8	-10.39
Travel Agents	403	361	-42	-10.42
Couriers and Messengers	114	102	-12	-10.53
Dining Room and Cafeteria Attendants and Bartender	198	177	-21	-10.61
Geological and Petroleum Technicians	701	624	-77	-10.98
Service Unit Operators, Oil, Gas, and Mining	9	8	-1	-11.11
Miscellaneous Engineers	9	8	-1	-11.11
Engineers, All Other	340	302	-38	-11.18
Chemical Engineers	340	302	-38	-11.18
Rolling Machine Setters, Metal & Plastic	111	98	-13	-11.71
Pumping Station Operators	161	142	-19	-11.80
Tellers	49	43	-6	-12.24
Rail Car Repairers	420	368	-52	-12.38
Signal and Track Switch Repairers	56	49	-7	-12.50
Signal and Track Switch Repairers	24	21	-3	-12.50

Appendix D. Employment Projections by Occupation in the Joliet Junior College District, 2000-2010 (table 23)

Occupational Area	Employees	Projected	2000-10 Change	
	2000	2010	Number	Percent
Eligibility Interviewers, Government Programs	151	132	-19	-12.58
Derrick, Rotary Drill, and Service Unit Operators, Oil, Gas, and Mining	15	13	-2	-13.33
Cementing and Gluing Machine Operators and Tenders	30	26	-4	-13.33
Dishwashers	662	572	-90	-13.60
Electrical and Electronic Equipment Assemblers	218	188	-30	-13.76
Economists	7	6	-1	-14.29
Machine Feeders and Offbearers	166	142	-24	-14.46
Order Clerks	470	402	-68	-14.47
Service Station Attendants	176	148	-28	-15.91
Nuclear Engineers	6	5	-1	-16.67
Petroleum Engineers	12	10	-2	-16.67
Model Makers and Patternmakers, Metal and Plastic	24	20	-4	-16.67
Model Makers, Metal and Plastic	18	15	-3	-16.67
Patternmakers, Metal and Plastic	6	5	-1	-16.67
Milling & Planing Mach Strs, Ops & Tndrs, Metal & Plastic	46	38	-8	-17.39
Lay-Out Workers, Metal and Plastic	11	9	-2	-18.18
Pump Operators, Except Wellhead Pumpers	22	18	-4	-18.18
Switchboard Operators, Including Answering Service	226	184	-42	-18.58
Word Processors and Typists	240	192	-48	-20.00
Rotary Drill Operators, Oil and Gas	5	4	-1	-20.00
Computer Operators	202	161	-41	-20.30
Insurance Claims and Policy Processing Clerks	143	113	-30	-20.98
Prepress Technicians and Workers	102	79	-23	-22.55
Paper Goods Machine Setters, Operators, and Tenders	270	206	-64	-23.70
Rail-Track Laying and Maintenance Equipment Operators	50	38	-12	-24.00
Electronic Home Entertainment Equipment Installers & Reprs	32	24	-8	-25.00
Communications Equipment Operators	318	238	-80	-25.16
Office Machine Operators, Except Computer	62	46	-16	-25.81
Upholsterers	27	19	-8	-29.63
Loan Interviewers and Clerks	123	85	-38	-30.89
Miscellaneous Communications Equipment Operators	37	25	-12	-32.43
Communications Equipment Operators, All Other	37	25	-12	-32.43
Meter Readers, Utilities	149	96	-53	-35.57
Motion Picture Projectionists	7	4	-3	-42.86
Rail Yard Engineers, Dinkey Operators, and Hostlers	7	4	-3	-42.86
Telephone Operators	55	29	-26	-47.27
Railroad Brake, Signal, and Switch Operators	112	51	-61	-54.46