

The Growing Population and Changing Demographics of the State of Illinois  
and Will County  
Joliet Junior College  
Office of Institutional Effectiveness  
October 2003

## **Population Trends & Projections in the State of Illinois**

### ***General Population Trends***

According to the U.S. Census, the population of the State of Illinois in 2000 was 12,400,000, making it the fifth largest state in the United States. Between 1990 and 2000, the State of Illinois grew by 8.6%, below the national state average of 13.2% and slower than other Midwestern states like Minnesota (12.4%), Indiana (9.7%), Wisconsin (9.6%), or Missouri (9.3%), but comparable to South Dakota, Nebraska, and Kansas.

One reason for the slow rate of growth in Illinois during the 1990's is migration. Between 1985 and 1990, about 342,000 more residents moved out of Illinois than moved in, the second most in the nation behind New York. Between 1995 and 2000, only the States of California and New York lost more residents than Illinois to migration. Accelerating, between April 2000 and July 2001 the State of Illinois lost over 110,000 more residents than it imported, again the second most in the nation behind New York. Nearly 30% of the 1,007,000 Illinois migrants who moved out of the State of Illinois between 1995 and 2000 moved to 5 Midwestern states: Indiana (85,000), Wisconsin (81,000), Missouri (60,000), Michigan (43,000), and Iowa (32,000).

Projections suggest migration rates will contribute to slow growth rates in Illinois over the next 25 years. Between 2000 and 2025, the U.S. Census projects the population of Illinois will grow by only 4.9%, compared to a national growth rate of 8.2%. Only eight states (Indiana, Kentucky, New York, Iowa, Michigan, Ohio, Pennsylvania, and West Virginia) are projected to witness slower growth. Between 1995 and 2025, the U.S. Census also projects the State of Illinois will lose about 1.7 million more residents than it imports through interstate migration.

Clearly, much more U.S. citizens are moving out of the State of Illinois than moving in. For the most part, Illinois residents are moving to border states near Chicago (Wisconsin and Indiana) or St. Louis (Missouri) and to the states of Colorado, Florida, and Arizona. Very few U.S. citizens are moving to Illinois when compared to other states.

## *Demographic shifts*

If the State of Illinois is losing more people to migration than it can replace through natural means (birth) or interstate immigration, then something else must explain the projected slow, albeit moderate, rate of population growth in the next 25 years. The reason the State of Illinois will witness any projected population growth is due to international immigration, particularly among Latino populations.

International immigration will be a major component of growth in Illinois, particularly in the Chicago metropolitan area. Already, international immigrant populations make up 15% of the population of Chicago's six suburban counties and much as 33% in some suburban cities. Between 1995 and 2025, the State of Illinois will gain one million people, or about 8% of its current population, through international immigration – the fifth highest in the nation.

While the white and African-American population in Illinois is projected to stabilize in the next 25 years, the Latino and Asian population will likely witness significant growth. In fact, the Latino population in the State of Illinois is projected to double in the next 25 years. By 2025, the U.S. Census projects more Latinos will live in the State of Illinois than in the State of Arizona or New Mexico.

By contrast, the growth of the African-American and white population in the State of Illinois between 2000 and 2025 will be the fourth slowest in the nation. Between 1995 and 2005, the white population in Illinois is expected to grow by only 1% and the African-American by only 4%. By contrast, Latino and Asian populations are projected to grow by 30% and 20%, respectively, during the same period.

These projected trends represent a dramatic departure from the historical demographic makeup of the State of Illinois. In 1950, 7.7% of Illinois residents belonged to a minority group. By 1990, 25% did; by 2020, 33% of all Illinois residents will belong to a minority group. Any future increase in natural population growth will be concentrated in these populations.

Linguistic minority populations in Illinois continue to grow. In 2000, Illinois had the eleventh highest percentage (19.2%) of families that speak a language other than English at home in the nation. The 19.2% was easily the highest in the Midwest, followed by Kansas (8.7%), Minnesota (8.5%), and Michigan (8.4%).

By 2020, it is projected that whites and African-Americans, as a percentage of the total Illinois population, will stabilize or decrease, while Latinos, as a percentage of the entire Illinois population, will almost double from 7.9% in 1990 to 14% in 2020.

## **Regional Population Changes in the State of Illinois**

Outside of the metropolitan Chicago and St. Louis areas, research strongly suggests that with the exception of areas associated with colleges (DeKalb, Normal, or Urbana, for instance), the rest of the State of Illinois will lose population over the next 30 years.

### ***Suburban & county growth***

Most of the growth in Illinois during the 1990's was concentrated in the city of Chicago and the suburban or "collar" counties of Chicago: Cook, DuPage, Kane, Lake, McHenry, and Will. In fact, 77% of all population growth in Illinois in the 1990's occurred in these 6 counties, for a gain of 530,000 residents.

Seventeen percent of all the population growth in Illinois during the 1990's occurred in Will County. Will County was the second fastest growing county in Illinois with a 31% population increase, second to McHenry (33%) and followed by Menard (27%), Kendall (26%), Kane (22%), Monroe (20%), and Boone (20%). Will County gained 112,000 people in the 1990's, the most in the state followed by DuPage (103,000), Cook (94,000), Lake (91,000), Kane (69,000), and McHenry (60,000).

Between 2001 and 2002, Will County was the fifth fastest growing county in the nation for counties with populations over 250,000 and seventeenth fastest for counties with populations over 100,000. Between 1990 and 2000, Will County grew by 40%, compared to a 8.6% growth for the State of Illinois.

While 73,000 more people moved to other states than moved in to the State of Illinois between 2001 and 2002, nearly 20,000 more people *moved in* to Will County than moved out. Other counties reporting positive interstate migration rates in Illinois between 2001 and 2002 Kane (8,600), Kendall (2,700), and McHenry (4,900).

Projections indicate most of the population growth in Illinois will occur in the Chicago metropolitan area, particularly in the suburban collar counties and especially in Will County. In 2005, it is projected Will County will account for 4.2% of the population of Illinois; by 2020, Will County will account for 6%.

While the population of Will County is projected to be 535,000 in 2005, it will grow to 740,000 by 2020 – an increase of 38% between 2005 and 2020 and 107% increase between 1990 and 2020.

### ***City growth***

According to the Northeastern Illinois Planning Commission, there are 203 incorporated places with populations over 10,000 in the State of Illinois. Between 2000 and 2002, nine of the top 20 fastest growing cities in Illinois were in the Joliet Junior College district. During this same period, Joliet was the tenth fastest growing municipality with a population over 100,000 in the nation.

### **Public Elementary & Secondary School Enrollments & Projections in the State of Illinois**

Total enrollment in Illinois elementary and secondary schools peaked in the early 1970's at almost 2,400,000 students. From there, K-12 enrollments steadily declined to a low of about 1,750,000 in 1990 and inched back up to 2,000,000 by the turn of the century.

It is projected K-12 enrollments will increase moderately between 2000 and 2010. However, since it is projected the number of students enrolled in elementary school will actually decrease, the number of high school students will increase at a much faster rate.

Most counties in the State of Illinois will see losses in their elementary and secondary school enrollments between 2000 and 2010. Counties with the highest projected increases in elementary and secondary school enrollments will be Kendall (101%), Will (62%), Kane (41%), Boone (39%), and Grundy (23%). During the 2001-02 school year, Kendall, Grundy, and Will counties enrolled 131,224 elementary and secondary school students. By 2010-11, it is projected these counties will enroll 172,482, for an increase of 31.4%, easily the most dramatic and numerous regional K-12 enrollment growth in the State of Illinois.

### ***Trends in K-12 enrollments by ethnicity***

During the 1976-77 school year, whites accounted for 75% and African-Americans for 20% of the K-12 enrollment in Illinois. By the 2001-02 school year, the population of white residents enrolled in K-12 education had dropped to 60%, while the proportion of African-Americans rose only modestly, to 21%. Between 1970 and 2010, the number of whites and

African-Americans enrolled in K-12 education is projected to fall by 600,000 and 50,000 students, respectively.

Most of the growth, then, can be explained by changes in the Latino and Asian populations. In 2001, Latinos accounted for 17% of K-12 enrollment in Illinois; by 2010, it is projected they will account for 23%. Asian students, as a percentage of all students, will increase from about 3% to 5%. In fact, by 2010, it is projected white students will make up only 53% of all elementary and secondary students.

## **Summary**

Based on available data, the following can be inferred about the State of Illinois and Will County:

- The State of Illinois will grow in population, but only moderately.
- White populations are moving out of Illinois faster than they are being replaced.
- If not for international immigration, particularly among Latino and Asian populations, the population of Illinois would actually decrease.
- The Latino population in Illinois is projected to double in the next 25 years. In fact, by 2025, it is projected more Latinos will live in Illinois than in the States of Arizona or New Mexico.
- Will County and the area encompassing the Joliet Junior College district will be one of the fastest growing in the nation and the fastest growing in the State.
- Almost half of all Illinois high school graduates in 2010 will be from minority populations.
- It is projected Kane, Grundy, and Will Counties will see almost a 33% increase in K-12 enrollments, easily the highest in the State of Illinois.

## Tables and graphs

### Percentage change in population in Illinois by ethnicity, in thousands, 1995 to 2025

	Year							
	1995		2005		2015		2025	
<b>Ethnicity</b>	Pop	%	Pop	%	Pop	%	Pop	%
African-American	1,813	15.3%	1,914	16.1%	2,037	15.8%	2,176	16.0%
Asian	358	3.0%	484	4.1%	602	4.7%	721	5.3%
Latino	1,090	9.2%	1,450	12.2%	1,840	14.3%	2,275	16.8%
White	8,615	72.5%	8,487	71.5%	8,428	65.3%	8,401	61.9%

Source: U.S. Census. (2002). *Projections of the total population of states: 1995 to 2025*. On-line: <http://www.census.gov/population/www/projections/stproj.html>

### Percentage change in population of elementary and secondary enrollments in Illinois by ethnicity, in thousands, 1980-81 to 2010-11

	Year							
	1980-81		1990-91		2000-01		2010-11	
<b>Ethnicity</b>	Pop	%	Pop	%	Pop	%	Pop	%
African-American	409	20.9%	388	21.8%	410	20.8%	385	19.1%
Asian	31	1.6%	48	2.7%	67	3.4%	99	4.9%
Latino	123	6.3%	174	9.8%	302	15.3%	467	23.1%
White	1,391	71.1%	1,166	65.6%	1,194	60.5%	1,069	52.9%

Source: Illinois State Board of Education. (2002, May). *Illinois public school enrollment projections: 2002-03 to 2010-11*. Springfield, IL: Author.

### Ten slowest growing states, 1995 to 2025

State	1995-2025 rate of growth
1. West Virginia	0.9%
2. Pennsylvania	5.1%
3. Ohio	5.3%
4. Michigan	5.5%
5. Iowa	7.0%
6. New York	9.3%
7. Kentucky	11.8%
8. Indiana	12.8%
<b>9. Illinois</b>	<b>13.6%</b>
10. Massachusetts	13.6%

Source: U.S. Census. (2002). *Projections of the total population of states: 1995 to 2025*. On-line: <http://www.census.gov/population/www/projections/stproj.html>

### Ten fastest growing states, 1995 to 2025

State	1995-2025 rate of growth
1. California	56.0%
2. New Mexico	55.0%
3. Hawaii	52.6%
4. Arizona	52.0%
5. Nevada	51.1%
6. Idaho	49.5%
7. Utah	47.8%
8. Alaska	46.5%
9. Florida	46.2%
10. Texas	45.2%

Source: U.S. Census. (2002). *Projections of the total population of states: 1995 to 2025*. On-line: <http://www.census.gov/population/www/projections/stproj.html>

### States with the highest projected numbers of Latino people, rank order, 2025

State	2025 projected population	
	Population	% of total state population
1. California	21,232,000	43.1%
2. Texas	10,230,000	37.6%
3. Florida	4,944,000	23.9%
4. New York	4,309,000	21.7%
<b>5. Illinois</b>	<b>2,275,000</b>	<b>16.9%</b>
6. Arizona	2,065,000	32.2%
7. New Jersey	1,861,000	19.5%
8. New Mexico	1,241,000	47.5%
9. Colorado	1,067,000	20.6%
10. Washington	797,000	10.2%

Source: U.S. Census. (2002). *Projections of the total population of states: 1995 to 2025*. On-line: <http://www.census.gov/population/www/projections/stproj.html>

Projected Latino population in midwestern states, rank order, 2025

State	2025 projected population
<b>1. Illinois</b>	<b>2,275,000</b>
2. Michigan	431,000
3. Ohio	319,000
4. Kansas	281,000
5. Indiana	243,000
6. Wisconsin	236,000
7. Minnesota	193,000
8. Missouri	172,000
9. Nebraska	111,000
10. Iowa	96,000

Source: U.S. Census. (2002). *Projections of the total population of states: 1995 to 2025*. On-line: <http://www.census.gov/population/www/projections/stproj.html>

Projected Asian population in midwestern states, rank order, 2025

State	2025 projected population
<b>1. Illinois</b>	<b>721,000</b>
2. Michigan	290,000
3. Minnesota	274,000
4. Ohio	250,000
5. Wisconsin	210,000
6. Missouri	102,000
7. Indiana	100,000
8. Kansas	84,000
9. Iowa	76,000
10. Nebraska	42,000

Source: U.S. Census. (2002). *Projections of the total population of states: 1995 to 2025*. On-line: <http://www.census.gov/population/www/projections/stproj.html>

Projected African-american population in midwestern states, rank order, 2025

State	2025 projected population
<b>1. Illinois</b>	<b>2,176,000</b>
2. Michigan	1,705,000
3. Ohio	1,660,000
4. Missouri	800,000
5. Indiana	615,000
6. Wisconsin	501,000
7. Minnesota	279,000
8. Kansas	249,000
9. Nebraska	109,000
10. Iowa	91,000

Source: U.S. Census. (2002). *Projections of the total population of states: 1995 to 2025*. On-line: <http://www.census.gov/population/www/projections/stproj.html>

Projected non-hispanic white population as a percentage of total population in midwestern states, rank order, 2025

State	2025 projected % of population
1. Iowa	91.1%
2. North Dakota	87.8%
3. South Dakota	86.0%
4. Nebraska	85.6%
5. Indiana	85.4%
6. Minnesota	85.0%
7. Wisconsin	83.2%
8. Missouri	82.6%
9. Ohio	81.1%
10. Kansas	80.0%
11. Michigan	75.7%
<b>12. Illinois</b>	<b>62.5%</b>

Source: U.S. Census. (2002). *Projections of the total population of states: 1995 to 2025*. On-line: <http://www.census.gov/population/www/projections/stproj.html>

States with highest percentage of families that speak a language other than English at home, 2000

State	%
1. California	39.5
2. New Mexico	36.5
3. Texas	31.2
4. New York	28.0
5. Hawaii	26.6
6. Arizona	25.9
7. New Jersey	25.5
8. Florida	23.1
9. Nevada	23.1
10. Rhode Island	20.0
<b>11. Illinois</b>	<b>19.2</b>

Source: Shin, H. B., with Bruno, R. (2003, October). *Language use and english-speaking ability: 2000*. Washington, DC: U.S. Census. On-line: <http://www.census.gov/prod/2003pubs/c2kbr-29.pdf>

Midwestern states with highest percentage of families that speak a language other than English at home, 2000

State	%
<b>1. Illinois</b>	<b>19.2</b>
2. Kansas	8.7
3. Minnesota	8.5
4. Michigan	8.4
5. Nebraska	7.9
6. Wisconsin	7.3
7. South Dakota	6.5
8. Indiana	6.4
9. Ohio	6.4
10. North Dakota	6.3

Source: Shin, H. B., with Bruno, R. (2003, October). *Language use and english-speaking ability: 2000*. Washington, DC: U.S. Census. On-line: <http://www.census.gov/prod/2003pubs/c2kbr-29.pdf>

### Highest growing counties in Illinois, 1990-2000

State	Population change
1. Will	111,566
2. DuPage	103,177
3. Cook	94,952
4. Lake	91,381
5. Kane	69,479
6. McHenry	59,509
7. St. Clair	17,218
8. Winnebago	17,072
9. McLean	15,664
10. Sangamon	13,771

Source: Herring, C. (2002). *The growing diversity of the illinois population, 1990-2020* (pdf). Urbana, IL: Institute of Government and Public Affairs. On-line: <http://www.igpa.uillinois.edu/publications/critIssues/diversity.pdf>

### Fastest growing counties in Illinois, 1990-2000

State	% change
1. McHenry	32.5%
2. Will	31.2%
3. Menard	26.8%
4. Kendall	25.7%
5. Kane	21.9%
6. Monroe	20.1%
7. Boone	19.5%
8. Brown	19.3%
9. Lake	17.7%
10. Bond	13.6%

Source: Herring, C. (2002). *The growing diversity of the illinois population, 1990-2020* (pdf). Urbana, IL: Institute of Government and Public Affairs. On-line: <http://www.igpa.uillinois.edu/publications/critIssues/diversity.pdf>

### Highest growing counties in Illinois, 2005-2020

State	Population change
1. Will	203,644
2. Cook	193,958
3. Kane	103,463
4. Lake	92,111
5. McHenry	72,740
6. DuPage	51,402
7. St. Clair	25,886
8. Champaign	20,969
9. Madison	18,597
10. McLean	14,231

Source: Herring, C. (2002). *The growing diversity of the illinois population, 1990-2020* (pdf). Urbana, IL: Institute of Government and Public Affairs. On-line: <http://www.igpa.uillinois.edu/publications/critIssues/diversity.pdf>

### Fastest growing counties in Illinois, 2005-2020

State	% change
1. Will	38.0%
2. Menard	27.2%
3. McHenry	27.1%
4. Kane	24.5%
5. Kendall	24.4%
6. Monroe	22.1%
7. Jersey	17.8%
8. Woodford	16.0%
9. Grundy	15.0%
10. Lake	14.6%

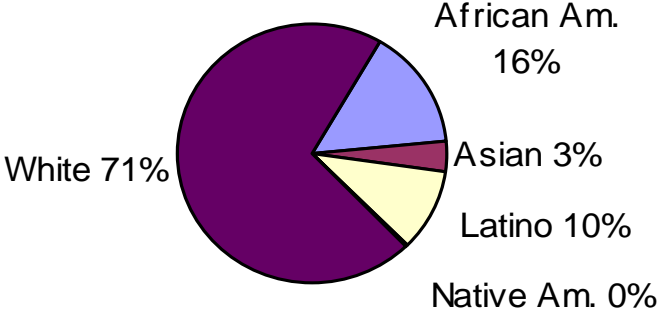
Source: Herring, C. (2002). *The growing diversity of the illinois population, 1990-2020* (pdf). Urbana, IL: Institute of Government and Public Affairs. On-line: <http://www.igpa.uillinois.edu/publications/critIssues/diversity.pdf>

## Fastest growing cities in Illinois, 2000-2002

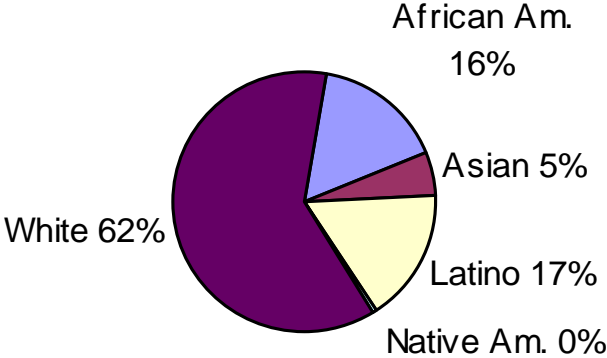
City	% change
1. Romeoville	35.8
2. Plainfield	31.5
3. Oswego	29.1
4. South Elgin	22.0
5. North Aurora	19.5
6. Frankfort	18.8
7. Lockport	17.6
8. New Lenox	13.7
9. Algonquin	13.3
10. Lake of the Hills	12.8
14. Bolingbrook	11.4
15. Joliet	11.4
16. Crest Hill	11.2
18. Mokena	10.7

Source: Northeastern Illinois Planning Commission. (2003, July). U.S. census bureau issues July 1, 2002 population estimates for municipalities located in northeastern illinois. On-line: <http://www.nipc.cog.il.us/munipop02.html>

What the State of Illinois looks like in 2000

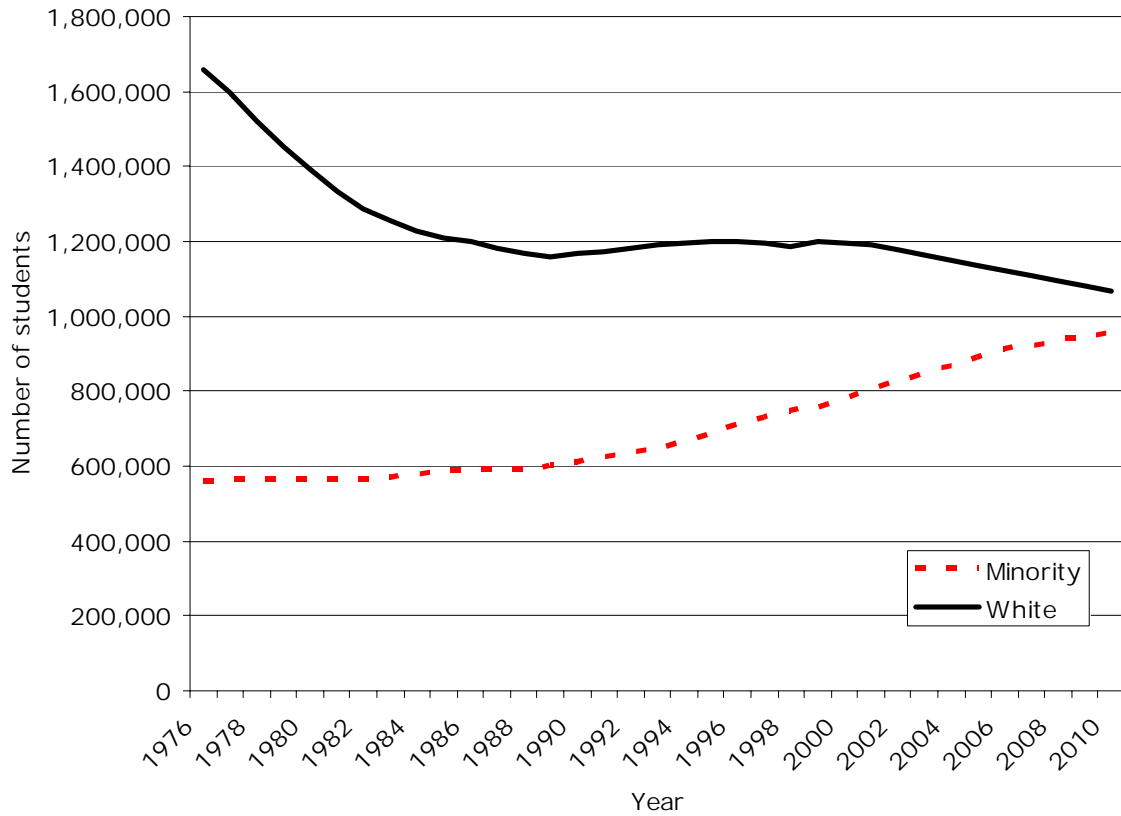


What the State of Illinois is projected to look like in 2025



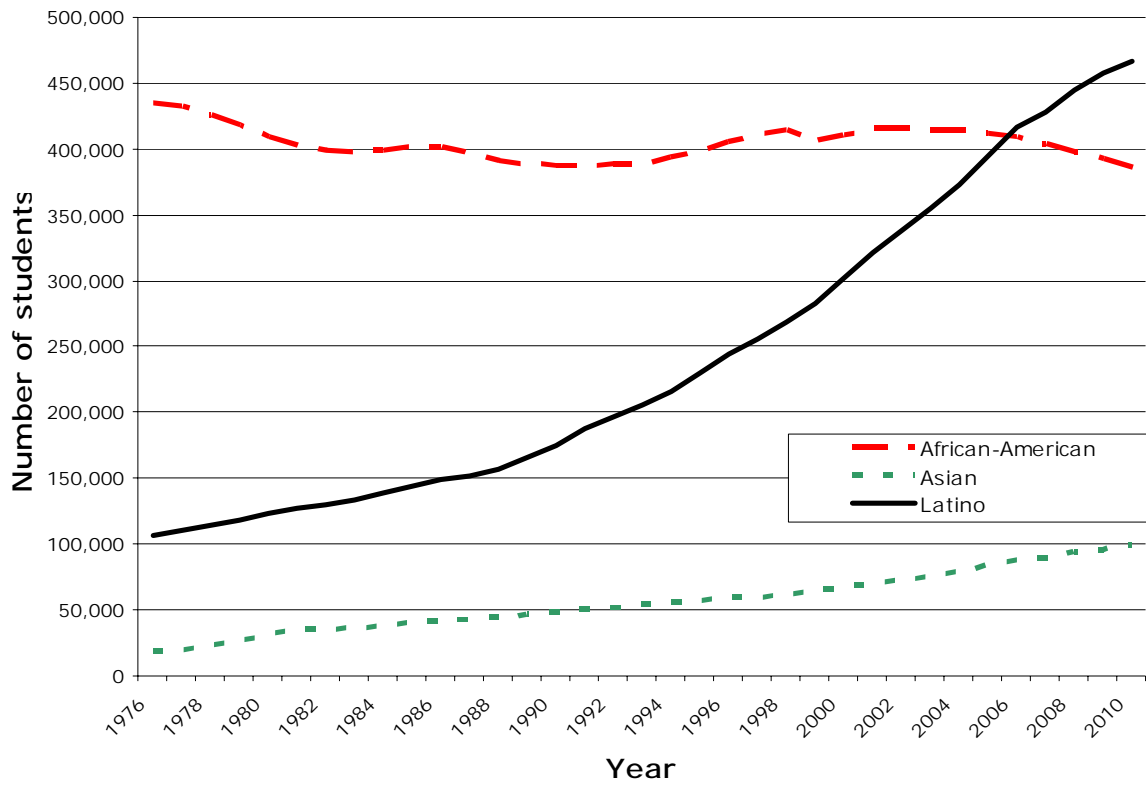
Source: U.S. Census. (2002). *Projections of the total population of states: 1995 to 2025*. On-line: <http://www.census.gov/population/www/projections/stproj.html>

Enrollment of White and Minority students in K-12 education in the State of Illinois, 1976-2010 (projected)



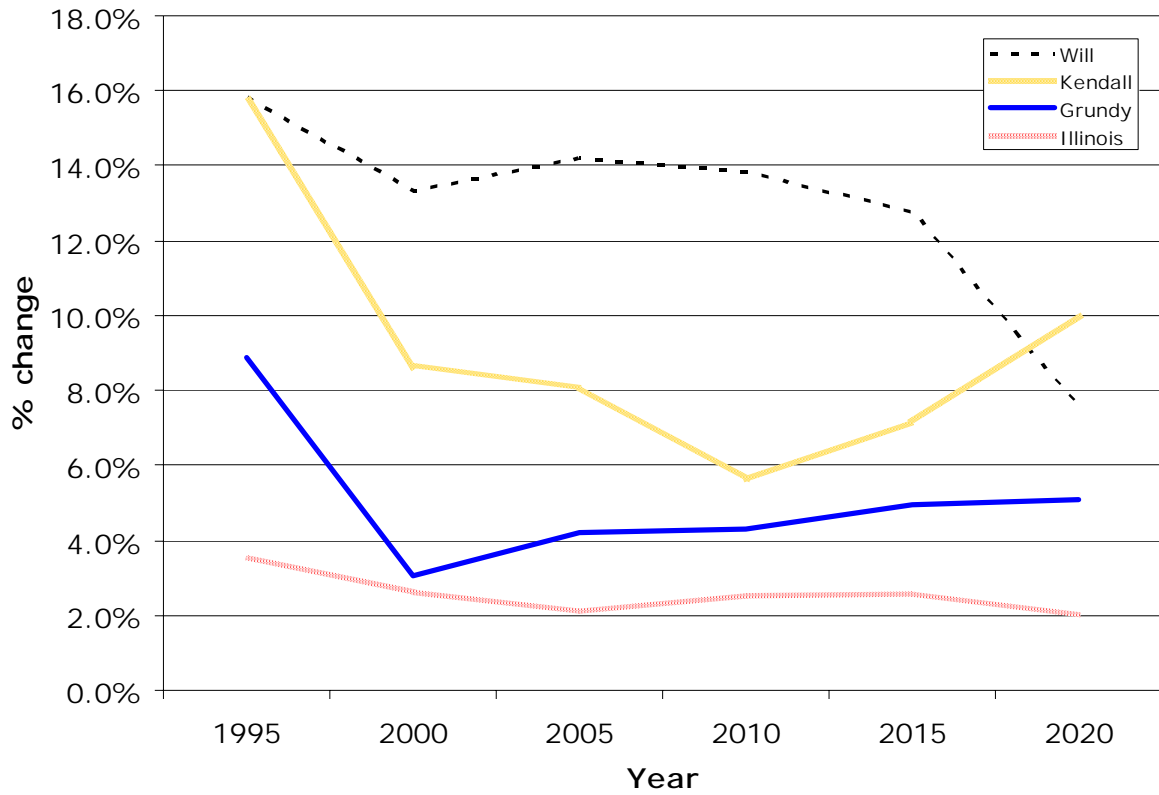
Source: Illinois State Board of Education. (2002, May). *Illinois public school enrollment projections: 2002-03 to 2010-11*. Springfield, IL: Author.

Enrollment of African-American, Asian, and Latino students in K-12 education in the State of Illinois, 1976-2010 (projected)



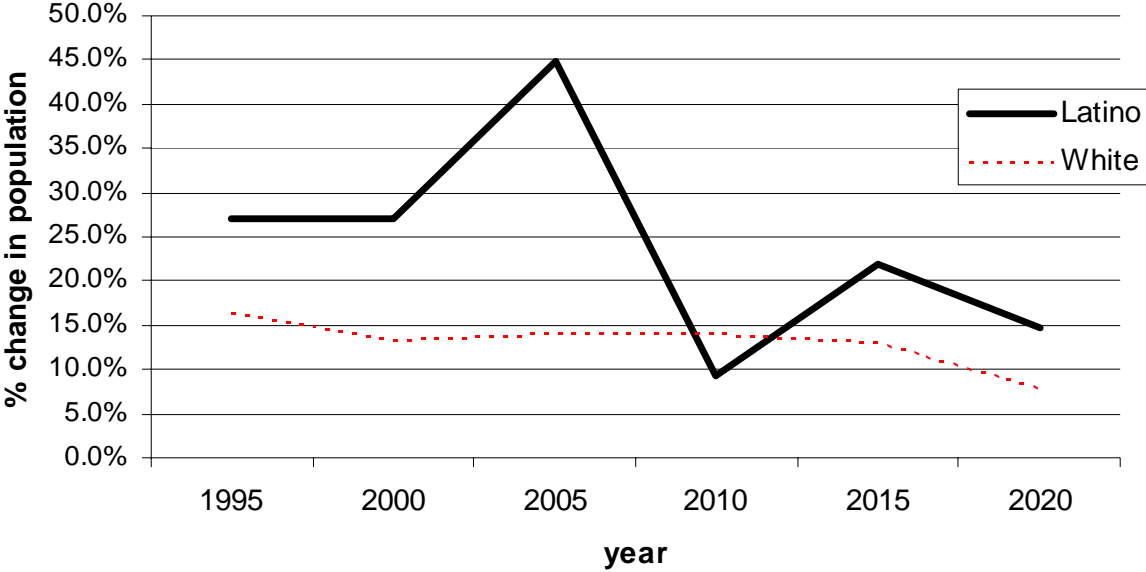
Source: Illinois State Board of Education. (2002, May). *Illinois public school enrollment projections: 2002-03 to 2010-11*. Springfield, IL: Author.

Percent change in population for Grundy, Kendall, and Will Counties and the State of Illinois, 1995-2020



Source: Herring, C. (2002). *The growing diversity of the illinois population, 1990-2020* (pdf). Urbana, IL: Institute of Government and Public Affairs. On-line: <http://www.igpa.uillinois.edu/publications/critIssues/diversity.pdf>

Percent change in White and Latino Population Will County, 1995-2020



Source: Illinois Department of Commerce and Community Affairs. (2002). *Population data*. On-line: [http://www.illinoisbiz.biz/bus/research/econ/population\\_projections.html](http://www.illinoisbiz.biz/bus/research/econ/population_projections.html)

## Sources

Campbell, P. (1997, May). *Population projections, states: 1995-2025* (pdf). On-line: <http://www.census.gov/prod/2/pop/p25/p25-1131.pdf>

Franklin, R. S. (2003, August). *Domestic migration across regions, divisions, and states: 1995 to 2000* (pdf).. On-line: <http://www.census.gov/prod/2003pubs/censr-7.pdf>

Gerald, D. E., Hussar, W. J. (2002, October). *Projections of education statistics to 2012*. Washington, DC: National Center for Education Statistics.

Herring, C. (2002). *The growing diversity of the illinois population, 1990-2020* (pdf). Urbana, IL: Institute of Government and Public Affairs. On-line: <http://www.igpa.uillinois.edu/publications/critIssues/diversity.pdf>

Illinois Department of Commerce and Community Affairs. (2002). *Illinois Census 2000*. On-line: [http://www.illinoisbiz.biz/bus/research/census\\_state.html](http://www.illinoisbiz.biz/bus/research/census_state.html)

Illinois Department of Commerce and Community Affairs. (2002). *Population data*. On-line: [http://www.illinoisbiz.biz/bus/research/econ/population\\_projections.html](http://www.illinoisbiz.biz/bus/research/econ/population_projections.html)

Illinois State Board of Education. (2002, May). *Illinois public school enrollment projections: 2002-03 to 2010-11*. Springfield, IL: Author.

Northeastern Illinois Planning Commission. (2000, August). *1990-1999 county population estimates in northeastern illinois by age group and by race and hispanic origin*. On-line: <http://www.nipc.cog.il.us/c99a&r.htm>

Northeastern Illinois Planning Commission. (2003, July). U.S. census bureau issues July 1, 2002 population estimates for municipalities located in northeastern illinois. On-line: <http://www.nipc.cog.il.us/munipop02.html>

Nowlan, J. D. (2001). *Great suburban region to shape illinois' future* (pdf). Urbana, IL: Institute of Government and Public Affairs. On-line: <http://www.igpa.uillinois.edu/publications/critIssues/suburban.pdf>

The outskirts: A quick history. (2003, July 30). *Chicago Tribune*, p. 1.

Perry, M. J. (2003, August). *State-to-state migration flows: 1995 to 2000* (pdf). On-line: <http://www.census.gov/prod/2003pubs/censr-8.pdf>

U. S. Census Bureau. (1990). *Selected place of birth and migration*. Washington, DC: Author.

U.S. Census Bureau. (2001, April). *Ranking tables for states: 1990 and 2000*. On-line: <http://www.census.gov/population/cen2000/phc-t2/tab01.pdf>

U. S. Census Bureau. (2002). *Population Projections for States, by Age, Sex, Race, and Hispanic Origin: 1995 to 2025*. On-line: <http://www.census.gov/population/projections/state/stpjpop.txt>

U. S. Census Bureau. (2002). *Illinois population projections: 1995 to 2025*. On-line: <http://www.census.gov/population/projections/state/9525rank/ilprsrel.txt>

U.S. Census Bureau. (2002, January). American factfinder. On-line: <http://www.census.gov/main/www/cen2000.html>

U. S. Census Bureau. (2003). *State of residence in 2000 for the population 5 years and over by state of residence in 1995*. On-line: <http://www.census.gov/population/cen2000/phc-t22/tab03.pdf>

U. S. Census Bureau. (2003). *State and county quick facts*. On-line: <http://quickfacts.census.gov/qfd/>

U.S. Census Bureau. (2003, September). *Population estimates: Counties*. On-line: <http://eire.census.gov/popest/data/counties.php>

Ward, J. G. (2001). *Demographic trends and the demographic makeup of Illinois in 2020* (pdf). Urbana, IL: Institute of Government and Public Affairs. On-line: <http://www.igpa.uillinois.edu/publications/critIssues/DemographicTrendsMakeup.pdf>