



Learning Outcomes at Joliet Junior College



JOLIET JUNIOR COLLEGE
1901



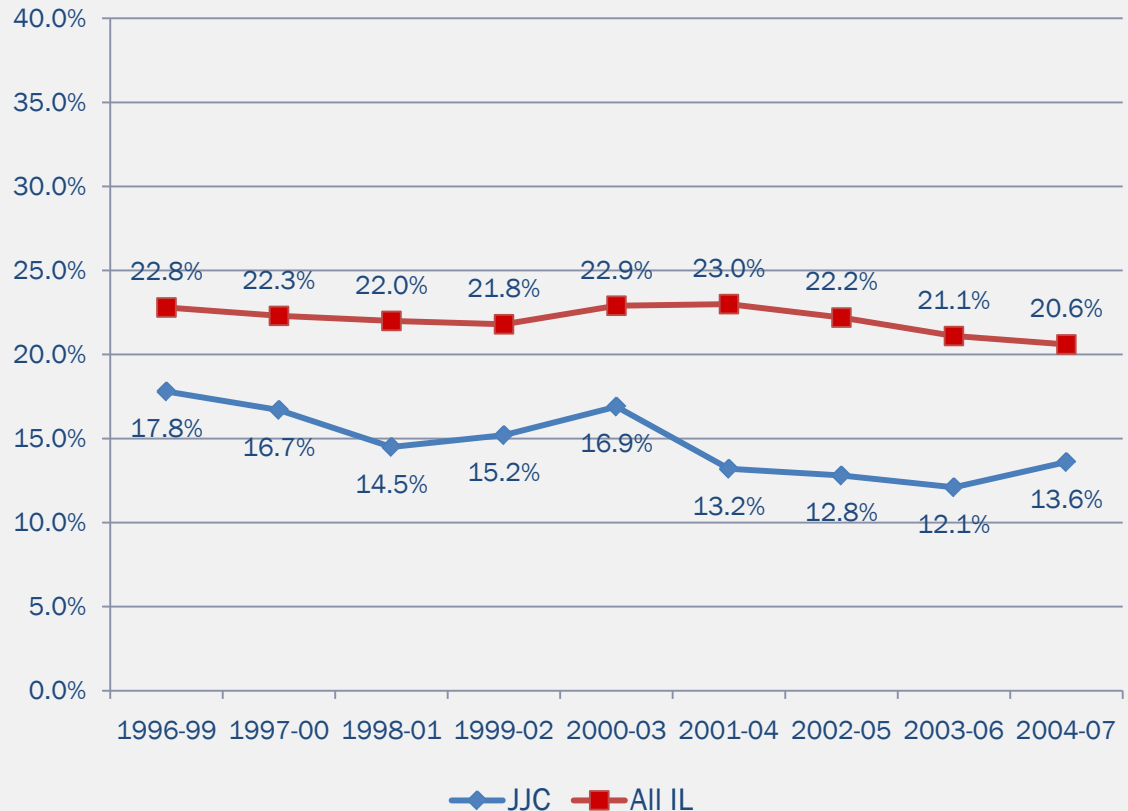
Why do graduation rates matter?

Graduation rates are an indication of how long it takes a student to complete their academic goals.

Graduation rates, however, do not capture the large number of students who do not enroll to complete a degree, but rather to gain personal competency or professional development without obtaining a degree.

Note: Graduation rates represent the percent of first-time, full-time students in a cohort who receive a degree or certificate within three years. The 1999 graduation rate, for instance, represents the rate of the entering 1996 cohort.

Graduation Rates



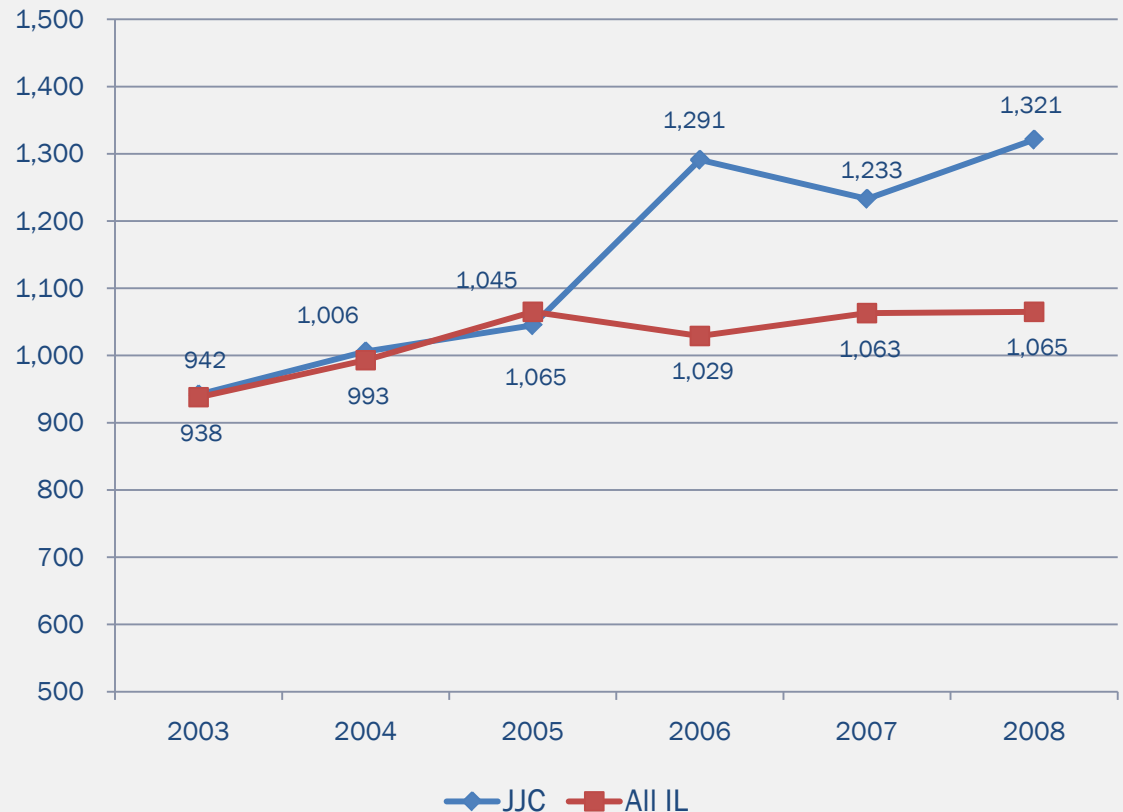
JOLIET JUNIOR COLLEGE
1901



Completions

Why do completions matter?

Completions highlight the number of students who receive a degree or certificate on an annual basis.



Note: The Illinois data is the average for all Illinois community colleges. Data includes degrees and certificates.



JOLIET JUNIOR COLLEGE
1901

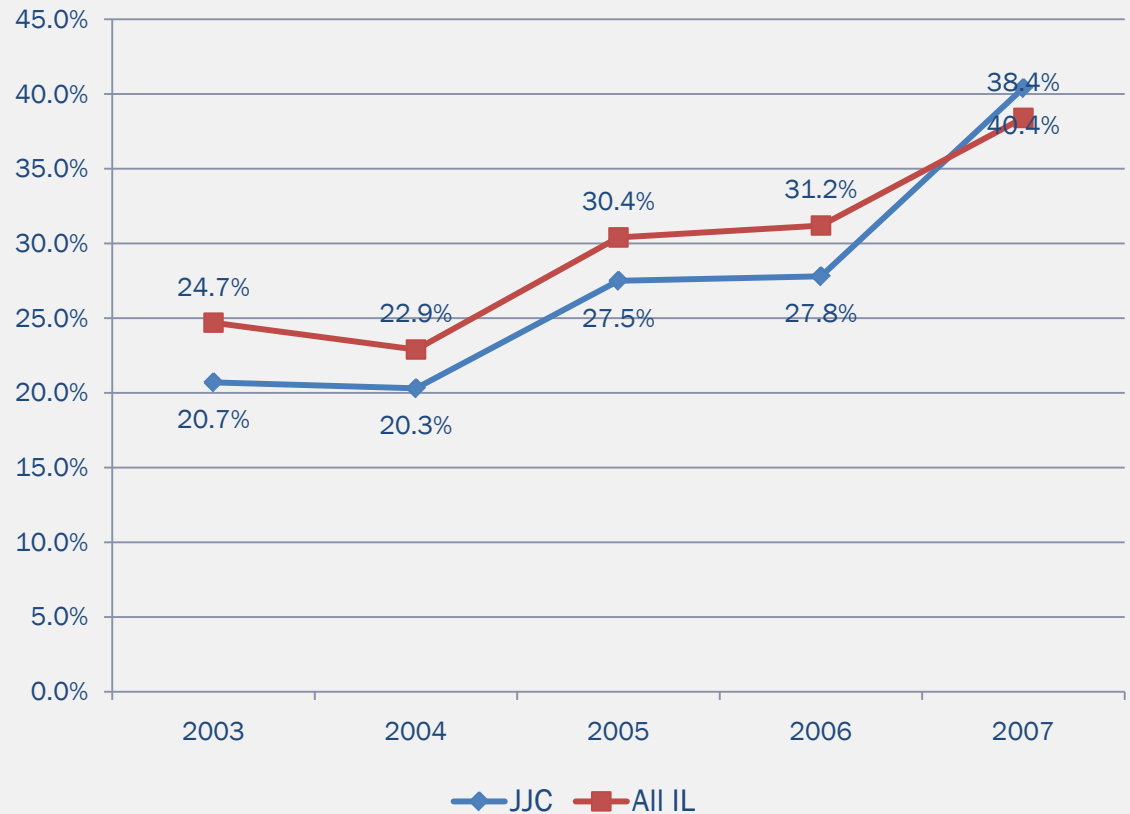


Why do transfer rates matter?

Transfer rates highlight the number of students who successfully matriculate at a 4-year institution.

Note: This data highlights the number of entering students in a fall semester who transfer by the summer four years after initial enrollment.

Transfer Rates



JOLIET JUNIOR COLLEGE
1901



Mental Activities

Why do mental activities matter?

The CCSSE survey measures the extent to which students feel their institution emphasizes certain mental activities.

These matter because the more emphasis a college places on specific activities shown to be effective in enhancing learning, the more likely student will be engaged with their intellectual environment.



Note: Measured on a likert scale, with the larger number representing higher frequencies. More specific information can be found at the [CCSSE website](#).



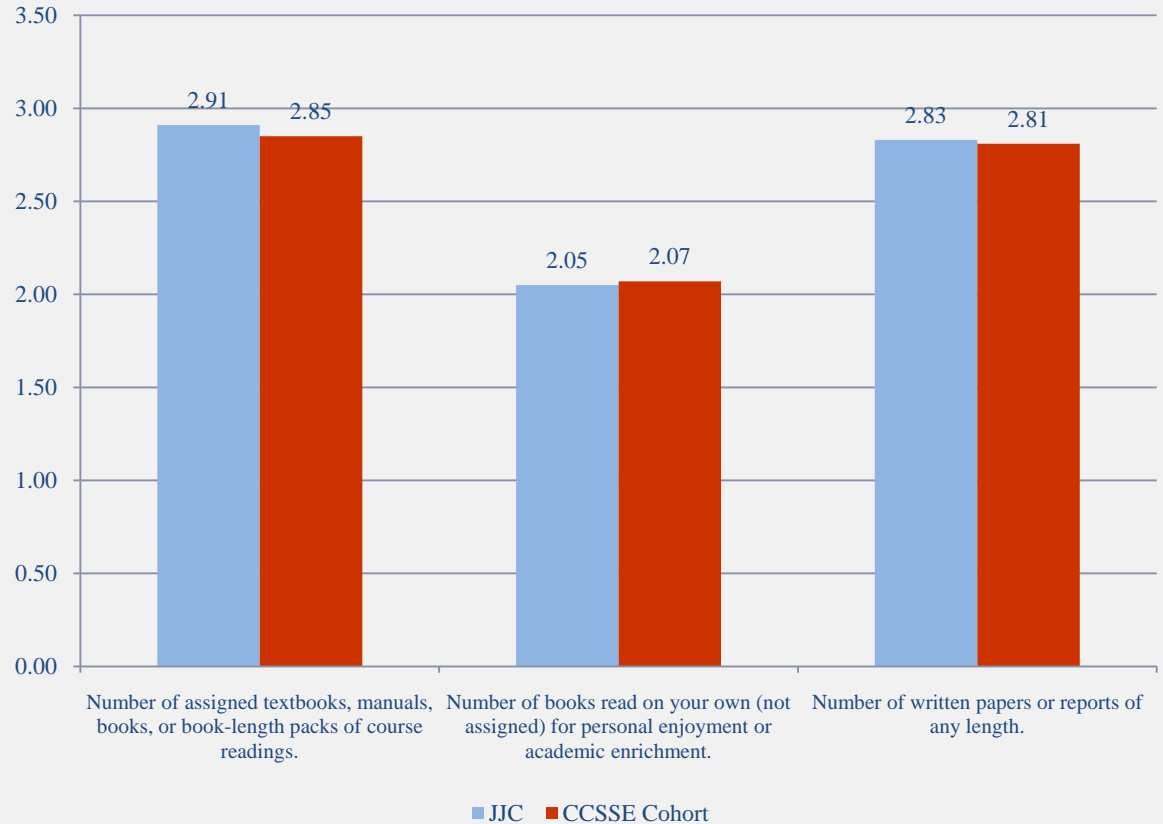


Reading and Writing Activities

Why do reading and writing activities matter?

The CCSSE survey measures the extent to which students feel their institution emphasizes certain reading and writing activities.

The frequency of reading and writing a student engages in demonstrates a level of motivation on the part of the student and the commitment of the college to emphasize the value of intellectual engagement.



Note: Measured on a likert scale, with the larger number representing higher frequencies. More specific information can be found at the [CCSSE website](#).





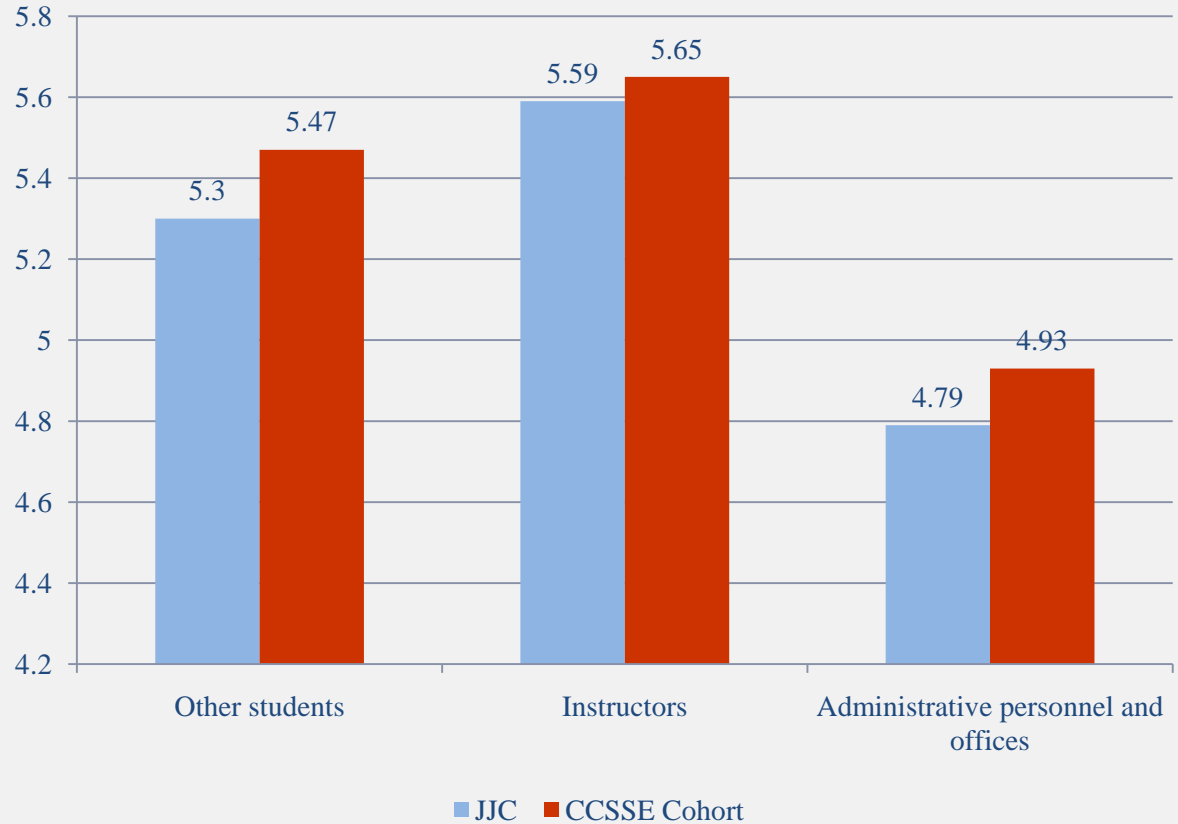
Relationships with College Personnel

Why do relationships with college personnel matter?

The CCSSE survey measures the extent to which students rate the quality of their relationships with key college personnel.

Relationships with key personnel, and in particular faculty, show how engaged students are with college staff and other students who have an influence on their intellectual and social integration into college.

Note: Measured on a likert scale, with the larger number representing a higher level of quality. More specific information can be found at the [CCSSE website](#).





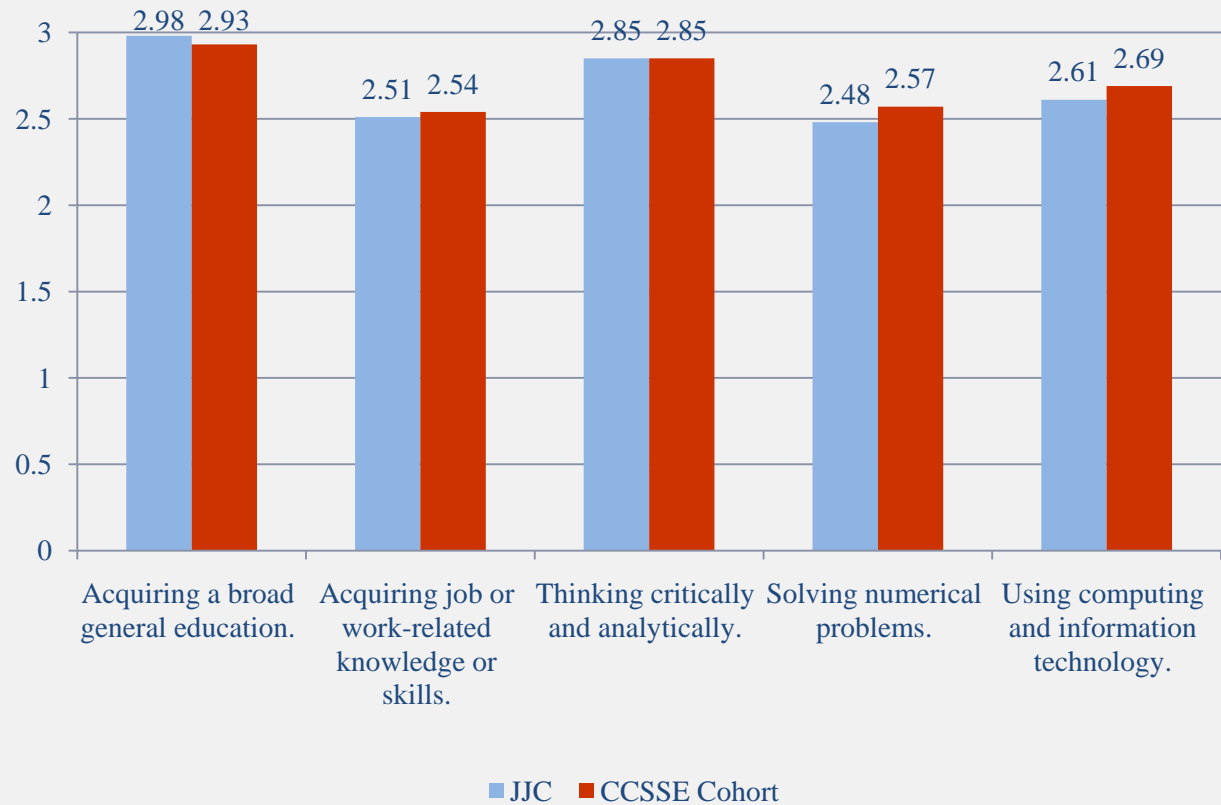
Contribution to Knowledge, Skills, and Development

Why do contributions to knowledge, skills, and development matter?

The CCSSE survey measures the extent to which students feel their institution contributes to their knowledge, skills, and development.

These contributions provide insight into college efforts at enhancing engagement and learning.

Note: Measured on a likert scale, with the larger number representing higher frequencies. More specific information can be found at the [CCSSE website](#).



JOLIET JUNIOR COLLEGE
1901



Licensure Pass Rates

Why do licensure pass rates matter?

The percent of JJC students who pass licensure exams for specific occupations shows that students have mastered the requisite skills and knowledge necessary for a particular occupation.

Description	2004			2005			2006			2007		
	#	JJC	U.S.	#	JJC	U.S.	#	JJC	U.S.	#	JJC	U.S.
ADN-RN*	82	80%	85%	79	85%	87%	108	83%	88%	95	81%	85%
Cert. PN*	65	95%	89%	81	99%	89%	86	99%	88%	89	94%	87%
Nurse Assistant	N/A	N/A	N/A	N/A	N/A	N/A	N/A	91%	88%	N/A	N/A	N/A
EMT*	N/A	N/A	N/A	91	95%	73%	69	100%	69%	N/A	N/A	N/A
Vet. Tech.	N/A	N/A	N/A	N/A	100%	80%	28	100%	68%	32	N/A	68%





Why does accreditation matter?

Accreditation is an objective evaluation of an institution's quality. Institutions must submit information showing they are effective in meeting institutional goals and mission.

JJC participates in the Academic Quality Improvement Program (AQIP) as part of its accreditation through the Higher Learning Commission.

Accreditation

Institutional Accreditation:

- Academic Quality Improvement Program (AQIP)
- JJC is accredited through the Higher Learning Commission through 2014.

Departmental Accreditations:

- Culinary Arts
- Practical Nursing
- Registered Nursing
- Veterinary Medical Technology
- Health Information Management
- Automotive Technology
- Landscape Design & Management
- Accounting, Human Resource Management, Retail Management, Management and Supervision, Marketing Management, Real Estate, and Real Estate Appraisal
- Interior Design
- Music Department



JOLIET JUNIOR COLLEGE
1901



Why does recognition matter?

Recognition is a statutory term describing the status of a community college district that meets instructional, administrative, financial, facility, and equipment standards as established by the Illinois Community College Board (ICCB).

JJC is currently recognized by the ICCB for the next five years, until 2014.

JJC's Recognition website and report:

<http://www.jjc.edu/about/college-info/institutional-research/Pages/Recognition-Report.aspx>



JOLIET JUNIOR COLLEGE
— 1901 —



Why does program review and assessment matter?

Assessment and program review processes ensure that departments and programs use information to evaluate and continuously improve programs.

Program Review and Assessment

JJC Student Learning Committee:

<http://www.jjc.edu/about/committees/student-learning/Pages/default.aspx>

Program Review website, along with program reviews for specific programs:

<http://www.jjc.edu/about/college-info/institutional-research/Pages/program-reviews.aspx>



JOLIET JUNIOR COLLEGE
1901



Sources

Community College Survey of Student Engagement

- CCSSE website: <http://www.ccsse.org/>
- JJC CCSSE website: <http://www.jjc.edu/about/college-info/institutional-research/Pages/surveys.aspx?c=1>
- AQIP 2008 Systems Portfolio, Ch. 1: <http://www.jjc.edu/about/college-info/institutional-research/aqip/Pages/systems-portfolio.aspx>

Graduation Rates and Completion Data

- JJC Office of Institutional Research & Effectiveness: <http://www.jjc.edu/about/college-info/institutional-research/Pages/default.aspx>. See specifically, *Annual Performance Report*.
- U.S. Department of Education, Integrated Postsecondary Education Data System (IPEDS): <http://nces.ed.gov/ipeds/>

Transfer Rate Data

- JJC Office of Institutional Research & Effectiveness: <http://www.jjc.edu/about/college-info/institutional-research/Pages/default.aspx>. See specifically, *Annual Performance Report*.

JJC Accreditation, Program Review, Assessment, and Recognition Information

- JJC AQIP website: <http://www.jjc.edu/about/college-info/institutional-research/aqip/Pages/default.aspx>
- Program and departmental accreditations at JJC: <http://www.jjc.edu/about/college-info/institutional-research/Pages/accreditations.aspx>
- Recognition at JJC: <http://www.jjc.edu/about/college-info/institutional-research/Pages/Recognition-Report.aspx>
- Student Learning Committee website (assessment information): <http://www.jjc.edu/about/committees/student-learning/Pages/default.aspx>
- Program Review website: <http://www.jjc.edu/about/college-info/institutional-research/Pages/program-reviews.aspx>





JOLIET

JUNIOR COLLEGE

1901—